

C
L
U
B

T
E
A
M



C
H
A
M
P
I
O
N
S

Green Bay captain, Wally Srenaski, presenting the traveling Club Team championship trophy to 1988 Champs, Janesville team, Dan Bloom, Sid Anderson, Bob Runnas and Bun Carley

When your team includes a world champion who wins all his ten games and another big hitter who knocks off Kangas, the state #2 pitcher, well, then it's easy to go home with the Club Team trophy.

Sid Anderson, the Senior World Champ and Dan Bloom led their Janesville team as they blanked Combined Locks in their final match. As it happened, they needed all four of those wins to hang on to first place.

In that match, Bob Runnas has a personal high game of 67%. Bun Carley ringered at a 63% clip. As a team, they tossed more ringers in that one match than any other team in any match that day. The team average for the high game match was an outstanding 64.2%, a good 10% over their tournament average.

High individual game was 24 ringers in 30 shoes, 80%, by Don Kangas pitching for Combined Locks. His 69.7% overall easily out-distanced all other contenders.

The crew from Janesville had been winning steadily. With two matches to go, four teams, Green Bay, Marshfield, Janesville and Combined Locks were all sitting on 22 to 23 wins. Green Bay had earlier dumped three losses to the Locks. The next match they regained three from Janesville. Marshfield had their only losing match against Janesville, 3-1. The swaping created a near four way tie. The last two matches decided it.

Combined Locks did not win again gaining only one-half point. Green Bay also faltered losing six times in these final two matches. Marshfield won and then split the last match with Green Bay giving Janesville the go-

CLUB TEAM CHAMPIONSHIP (CONT'D)

ahead win. Only one win separated first place, Janesville and second place, Marshfield

Anyone of the four teams could have won with a few lucky bounces. Despite their seventh place finish, the Pitchin' Palace had a disappointing day as did Platteville. Their big gun, John Udelhofen, is on the injured reserve list--hit by a cow--in the barn. Racine County and Kenosha County teams not figured to win, may have stumbled a little, but they did O.K. Stevens Point, the old Rosholt team, had some new people, will do better next time. The Fond du Lac Cannon Fodders, as they call themselves, were respectable, won almost half their games. A former Club Team champion, Goldendale, lost only two matches and managed to slip into fourth place.

The Club Team tourney drew 12 teams this year. Fillmore had to drop out but it was still a chore to schedule. To give every team a chance to play each other team, the shoe limit was set at thirty making for short games and many court changes. The players kept their own score adding \$220 to the prize money. Of the sixteen dollars entry fee, ten dollars went for individual game awards of two dollars each, three dollars for court rental, two dollars (\$88, total) was for first place and one dollar per player went to the stat-people as a "token" payment of appreciation. Sally Kubash, Carla McFarlane, Dianne Mutz, Sandy Secord and Susie Pritzlaff did a super job on the numbers.

Janesville	29½	53.1	Pitchin' Palace	18	42.9
Dan Bloom	6½	59½	W. Woodworth	3	34.0
Bun Carley	5	52.0	Grant Hintz	5	53.3
Sid Anderson	10	57.0	Gerrl Melstad	8	53.3
Bob Runnas	6	44.3	Len Melstad	2	31.3
Marshfield	28½	51.0	Stevens Point	16	41.3
Vince Jakel	7½	46.0	Mark Kranski	4	38.7
Randy Rein	7	61.0	Steve Cieslewicz	4	41.0
Bob Gregorich	8	50.0	H. Hoffbeck	0	26.7
Sylvia David	6	47.0	Brian Repinski	8	59.0
Green Bay	25	49.6	Racine Co.	14½	42.1
Carl Joppe	6	56.0	Mike McDonald	5	36.3
Steve Wiegert	6	53.0	Rich Brower	2½	41.7
Cyrena Srenaski	9	48.0	Tony Scrima	5	50.7
Wally Srenaski	4	41.3	Jack VanSwol	2	39.7
Goldendale	24	45.1	Kenosha Co.	13	38.5
Ralph Maylahn	8	55.7	Bert Phelps	3	36.7
Joan Guetzke	3	28.7	M Christopherson	2	30.7
Ray Billen	5	44.0	G Bogenschneider	2	45.7
Jim Haupt	8	52.0	Al Mueller	6	41.0
Combined Locks	23½	50.8	Platteville	7	37.7
Joe Gerrits	7	55.3	Norm Mauthe	2	45.0
Merwin Sorensen	3½	39.3	Len Mauthe	0	40.7
Ray Schommer	5	38.7	Melvin Flogel	2	29.3
Don Kangas	8	69.7	LaVern Edge	3	36.0
Fond du Lac	21	45.8	Statisticians		
Jim Bloemers	6	46.7	Dianne Mutz		
Leon Uhl	6	50.7	Carla McFarlane		
Keith Schlichter	5	42.3	Sally Kubash		
John Secord	4	43.3	Sandy Secord		
			Susie Pritzlaff		

1988 **17TH ANNUAL**

GOLDENDALE

OPEN

Fri. thru Sun. June 24, 25, 26.

NHPA SANCTIONED

Lone Star Tavern Germantown, WI.

class	scoring	awards	entry
men's A+B		cash only	add \$500
ladies - all		two trophies and cash	send \$1400 and card no.
men's CDE..	cancellation		
juniors	count all	trophies	free

90% entry money remains in class--includes scoring

DEADLINE JUNE '5 LIMITED to 120

NHPA SANCTIONED

~dedicated to Bill Austreng~

entries and card no. to:

Ed Wing
W204 N11912 Goldendale Rd.
Germantown, WI 53022

WISCONSIN HORSESHOE

NEWSLETTER

W204 N11912

GOLDENDALE RD.

GERMANTOWN, WI 53022

PHONE 414-628-1484

EDITOR, SUE PRITZLAFF

WRITER, JIM HAUPT

\$5.00 - 8 ISSUES

NHPA PRESIDENT DAVE LOUCKS

(excerpts from a letter to Jim Haupt)

The NHPA very much appreciates the encouragement the Wisconsin officials are giving to sanctioned tournaments. We realize that full NHPA membership is not yet for all pitchers but we hope that one day the big majority will see the advantages.

Most successful clubs have valued worker members you speak of. They generally pitch little or none but still want to be associated with the sport and friends they have supported over the years. In some charters, like Northern California, they can hold a club card and pitch in only club activities. No tournament is open to them because to be a state member, they must join the NHPA also. All of our some 100 tournaments per year are sanctioned and run by the clubs with each club hosting at least 3 or 4 per year. Here, we have not seen the problem you face probably because our State Constitution insists on National membership as well and pitchers have come to accept it.

I am prepared to offer a possible solution. The NHPA will allow the sanctioned league member who has paid just \$3.00 plus insurance to play in one sanctioned tournament every year, excluding the State Championship. If you think this will help your situation, we will start the program on a trial basis in Wisconsin and a few other states that have similar problems.

EDITOR'S NOTE: The only Wisconsin NHPA sanctioned tournament in recent years has been the State Tournament. Last year the World Tournament in Eau Claire gave us two. Many of you witnessed this event for the first time. Without the National Horseshoe Pitchers Association, would we have a World Tournament? The thrill of crowning a world champion for the year and the opportunity for many to compete in their respective classes with people from all over the United States and Canada. Wisconsin has two World Champions, Debby Bestul, Eau Claire, Junior Girls division and Sid Anderson, Janesville, Senior Men.

By joining the NHPA you are also supporting your state association. Remember, you cannot join the NHPA without state membership. The sanction league program is included with NHPA membership. Non-members pay \$5.00 for this program.

Our National President, Dave Loucks, has offered the above proposal to help some of the clubs sanction their tournament. Could this lead the way to having more sanctioned tournaments in Wisconsin? How do you sanction your tournament? Contact Regional Director, Jim Haupt, 5075 N. Elkart Avenue, Milwaukee, WI 53217 Ph. 414-964-2735

COMPLIMENTARY CARD PROGRAM

The NHPA allows each club in the world to have one complimentary card each year. This card is obtained from your state secretary. This is just one of their regular NHPA cards. With this card you can allow 14 pitchers who are non-members to pitch in your tournament for the year. Their name is placed on the line on the back of the card. 14 is your maximum with one shot per customer. If they did this in 1984 they cannot repeat in 1985. There is no cost for this but the card must be returned to Donnie Roberts at the end of the year. This is being done to help you get some new people started pitching in your events. If they like it, then they might become members.

HOW ABOUT WOMEN'S NAMES IN HORSESHOES?

by JANE SNITH

Edie McKinney - moved from a 50% pitcher to a 60% pitcher in a matter of months. Geri Meistad - a tough competitor anytime (almost beat Don Kangas in the Team World Tournament). Lorraine Sternberg - a mid 60% World Tournament average. Cyrena Srenaski - another tough pitcher. Not to forget Mary Burton, Sharri Klopp and Ann Opsteen. With these pitchers, this year's State Tournament is yet another challenge.

WHPA SPRING MEETING

The outdoor temperature display at the Wautoma State Bank read 79° as forty-two would-be horseshoe pitchers ground out the how's and why's of the coming WHPA season. They came from wide and far. Platteville, Marshfield, Goldendale, Roshalt, Fond du Lac, Eau Claire, Combined Locks, The Pitchin' Palace and Loyal, as well as the man from Brothertown and the girls from north of Hwy. 8. Once again Henry Bartel graciously provided the meeting place. Everything put in form of a motion was approved. It was a day of ayes.

Their first concern was the lack of back-up funds in the state treasury. The needs established were the prospect of additional clerical expenses, the eventual replacement of the computer and a down the road hope or hint of prize money for the State Tournament. Large bank accounts, it was noted are commonplace to other state associations. No money in our treasury early this year meant we could not pre-pay the new NHPA insurance assessment of \$660.

At this time, however, the bill is paid and we enjoy an eleven hundred dollar bank balance.

Discussion ensued on the amount to expect tournament directors to pay on a per pitcher basis. Fifty cents won by a hand show vote of 17 to 9. In some cases it will be absorbed in the tournament expenses, in others it may mean an add-on to the entry fee effective in the 1989 season.

By voice vote two things were eliminated from the present WHPA rule book. One, the two tournament prerequisite will not be necessary for seniors and juniors and two, shirts at the state tournament, no longer have to carry the "Wisconsin" designation. This is just a WHPA ruling: Shirts at the World remain the same, must include name and state.

The Scholarship Fund Director, Glenn Bogen-schneider, reported a bank balance longer than his name, (\$2000) but encouraged all to continue to contribute. Goldendale Club, he cited, has been the most prolific sponsor. Platteville, last year, showed the greatest percentage increase. Those clubs who have

done little or nothing are encouraged to get it on and help carry the load. We were reminded that the award is now \$300 and \$150 for first and second in both the boys and girls classes.

Ralph Maylahn made a pitch for point games for the State Championship classes. The comments were that the time frame for that class would have to be longer or the last scheduled for the day. Archie Johnson said that all those old guys who can remember point games will soon be dead. No further action was taken.

Sanctioned clubs, Secord explained, benefit most from the NHPA insurance. They are covered during normal league play while others are covered only when participating in an NHPA sanctioned tournament.

Many of the little red books describing the sanctioned club/league program went home with the pitchers. Additional copies are available by writing Beverly Born, R.R. #2, Box 198A, Shattuck, OK 73858, Ph. (405) 938 5100.

The officers table had only three chairs. Secretary, John Secord, President, Dick Hansen, and Vice-President, Al Lonning. Dick called to attention to the fact; and we all do miss Pat Eaton.

By all means, this was a productive meeting. And evidently not the first time Dick Hansen has been in the "chair". The WHPA of 1988 is in good shape.

WHPA MEMBERSHIP DUES

\$5.00

AFTER MAY 31 - \$7.00

One Day Service
Sales Incentives
Awards, Trophies, Plaques

Manufacturer

RUDIG OLYMPIC AWARDS

126 S. 2nd Street
Milwaukee, WI 53204

Royce DeBow
National Sales Manager

(414) 273-2727

SCOREBOARD COUNTS RINGERS!

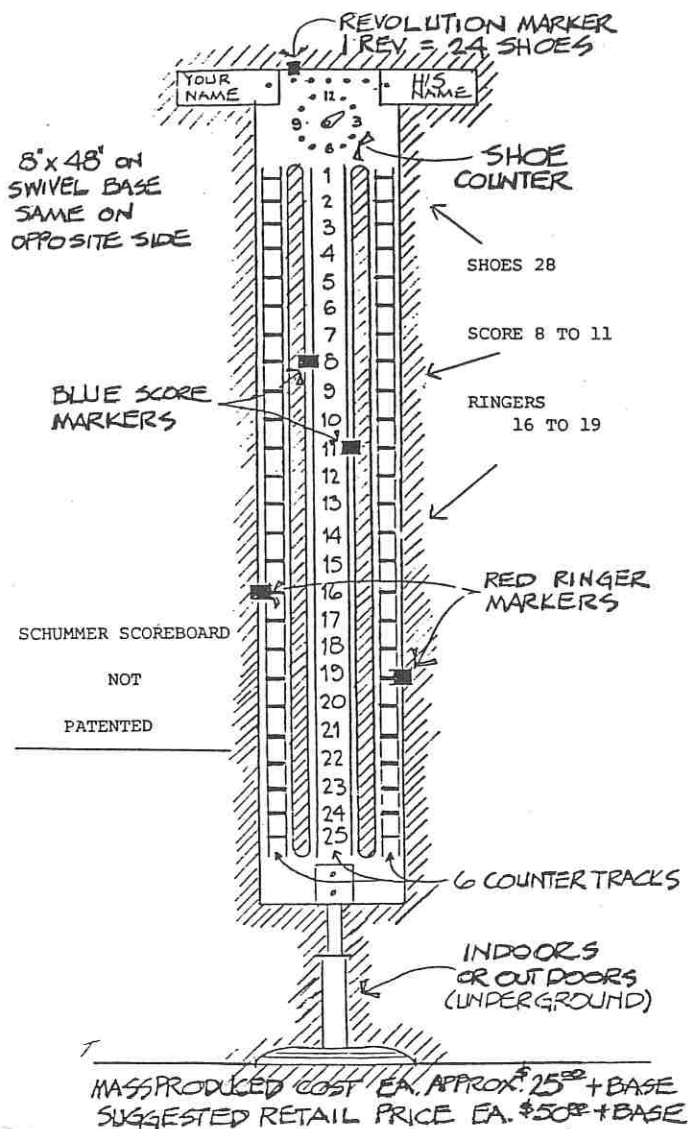
P.A.R. Horseshoes (means Pro. Am. Rated) has developed a superior scoreboard. Mr. Schummer, who is the inventor, says not to separate parts of the system but this scoreboard is too good to pass up.

Narrow but highly visible, the red, white and blue board is easy to operate and portrays more information than the wheel counters we are used to. Ringers are continuously counted by the outside markers. Instantly we see which pitcher is dominating. This board combines the visual best features of a ringers only game and the sporting excitement of the point.

Most pitchers are more interested in the ringer count than the final score. Reason -- ringers, you can take to the bank. That being the state bank of Fond du Lac, John Secord, officer in charge.

Want to see this board "in person"? Ask your regional director (Jim Haupt) to bring it along to your tournament.

The P.A.R. concept of the sport of horseshoes is explained in nine pages and available by writing, Glen "Red" Henton, 513 West Platt St., Maquoketa, IA 52060.



DICK HANSEN
WHPA
PRESIDENT

The 1988 Spring Meeting is now past us and it's time to start the summer tournaments. Of the twenty some listed from May to November, I hope to see the old and make some new friends of horseshoe.

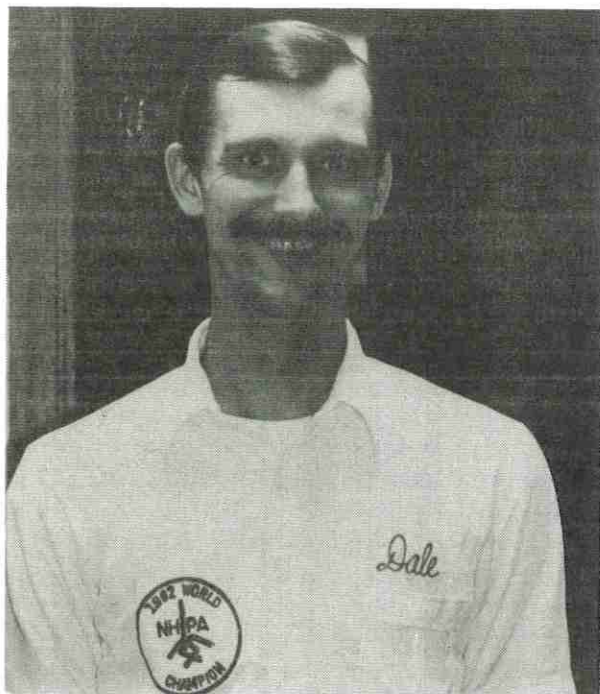
At this time I would like to ask for your help. I would like some information from around the state on what Juniors programs

are out there. If you have something started or would like to, let me know. The type of game played, number of shoes pitched, number of kids in the program and any information that may help some other club start their own program.

We have a need for and room for, many more junior boys and girls. I know they're out there, let's get them in those programs and show them what a great game this can be.

The NHPA does have a book out on this subject and if you would like one, I can get it for you. But, I want to know what's going on in this state with WHPA members. So call or write and we can help each other. Dick Hansen, 3085 S. 76th St., Franksville, WI 53132 Ph. 414-835-1321

TALKING HORSESHOES



with DALE LIPOVSKY

You have been to this tournament (World Team) before, what's the drawing card?

I believe it's the talent of the players. I'd have to rank this one, probably, 2nd best to the World Tournament, as far as caliber of pitchers playing and talent. Court conditions are great. It is just whether you're on your game or off. I know it's tough to get going. A lot of us have a layoff; since our guys from Minnesota are done in September. In other words it is hard to get going.

You didn't have any inside practice since September?

I played a couple weeks prior to the tournament to loosen up.

So, ordinarily you layoff in the winter time.

Most of the time we pick up the bowling ball and see what we can do with that.

Are you a pretty good bowler too?

Not as good as I'd like to be, I imagine about 187.

Then you don't have the Walter Ray thing going?

Not yet.

What is your frequency of practice in the

season?

I think at least four hours a day, maybe six hours. It depends on the heat of the day.

Are you going to practice four hours a day for the coming World?

You betcha.

Every day?

Every day, weather permitting.

Where do you practice?

Bloomington, Valley View, we have a league there Monday nights. And my mother and father have professional courts in the yard.

I heard that you were a right handed baseball pitcher, but you are a left handed horseshoe pitcher.

Yes, I do everything left handed but I throw a baseball right handed.

Ambidextrous?

No, I can't throw the horseshoe right handed. All I do right handed is throw the baseball. I guess they sort of call me an odd-ball. My friends wanted me to pitch fast pitch softball but I've got no defense if the ball comes back to my right hand, so I could not do it.

You are going to the World Tournament.

You're the defending Champion. Any predictions?

I'm going to be there, I'm going to give it one hell of a shot and I'm going to win it.

Want to ask the question? Is there anything you're wondering about? How to pitch a consistent percentage? Rules? Court etiquette?

We are going to talk horseshoes with lots of different personalities this year at the World, many of the state tournaments and through correspondence with NHPA officers. We challenge you to ask some of the questions. And we promise to try to contact the right people to answer those questions. So why don't you write us a note?

**Lettering, Artwork,
Posters & Flyers
By: Renee Wing
contact Newsletter**

DOWN AND BACK

with JIM HAUPT

John Secord said if he had it to do again he would have reminded everyone that the average he just sent out are based on the horseshoe year. The horseshoe year begins August 1, ends July 31. It means those averages you all just received pertain to the year ending July 31, 1987. Does that clear up a few discrepancies?

Surprise visitors at the Pitchin' Palace April "Homer" were Cliff and Gladly Lila of Stevens Point. A couple of "unknowns", Larry and Rich, won and the Lila's were second. Not bad for the pair from the frozen northland.

Another team tournament at the Pitchin' Palace? There is something about being part of a team that has a distinct pull on horseshoe pitchers. Run a team tournament and pitchers are begging for a berth on a team. The biggest tournaments at the Pitchin' Palace are the team tournaments. Is that why doubles leagues are so popular? Team shoes may be the answer to more loyal participation in all our leagues. It sure helps bring in the entries at the Palace.

In January '89 the WHPA can be expected to be in the same spot they experienced early this year; broke and in debt. The insurance premium will be due again and the fifty cents per pitcher per tournament thing will not begin until January '89. So if you and your tournament committee are of a generous perceptive nature you could start the 50¢ ball rolling in this year. We are almost sure that the secretary/treasurer will not turn down a gift to the WHPA of fifty cents per pitcher per tournament. We are trying to make it easy to be nice -- it's more fun that way.

Harvey Elmerson, Wisconsin Rapids has been nominated for the NHPA Hall of Fame! A product of the Wisconsin golden era, a time when the game flourished in this state, and Harvey led the way. Nine times Wisconsin state champ and a second place finish in the 1935 World are credits enough to qualify for the Hall of Fame. To top that he first competed in the World in 1927 and last year, 1987, he did it to us one more time -- sixty years of world tournaments, wow! I would love to go down and back with that man.

WHY SETTLE FOR SECOND BEST?

THE ORIGINAL



OVER 27 YEARS OF
QUALITY SERVICE

213 N. BROADWAY

Milwaukee, Wisconsin 53202
(414) 224-4999
MANUFACTURERS & ENGRAVERS
One Day Service

MEMBERS OF WHPA



the
national
horseshoe pitchers
association

Game Related Items

wisconsin sub distributor
paul neumann
111 marcella st.
conomowoc, wi.

53066 414 567 7001
call or send for 1988 catalog

**OUT-OF-STATE
TOURNAMENTS**

The 1989 World Tournament is in Spearfish, South Dakota from July 17 thru July 30. Al Lonning sent us a 1988 tournament schedule for South Dakota with an invitation from the Fiecek's for anyone who is vacationing there to stop and look them over. If you would like a list for South Dakota tournaments, send the newsletter a note.

Received a letter from Iowa's newsletter Editor, Tom Smock, to announce the first Hawkeye Midwest NHPA Regional Tournament set for June 25 & 26 at the Iowa State Fairgrounds. For information write to: Danny Sease, 1229 S.W. Evans, Des Moines, IA 50315 PH. 515-285-0131. Good news for Wisconsin is that Iowa will be bidding for the 1990 World Tournament.

News from Ohio, The Governor's Open Horseshoe Tournament to be held August 5-18, at the 1988 Ohio State Fair. This year they will have 16 person classes with 20 shoe count-all games. The Invitational Tournament will be held August 19-21. Four people with the highest point total will compete in the Invitational out of the Open. Contact: Sande Haldiman at 216-285-2552.

Going to the World Tournament in California this year? The "Welcome to California Horseshoe Tournament" is being held on July 30 and 31, hosted by the San Jose Horseshoe Club. For more information contact: Billie Sue Pennington, 3052 Bradshaw Drive, San Jose, CA 95148

THE KLRM

Another team tournament from the home of Team-Shoes, the Pitchin' Palace. A county tournament, the KLRM, held this February at the Pitchin' Palace, filled the twelve courts for five hours. The Kenosha County - Racine County horseshoe wars were expanded this year to include near-by Lake County, Illinois and Milwaukee County. Because the tournament was handicapped, games ending as ties remained as 1/2 win and 1/2 loss. Milwaukee County was a surprise winner by just one game point. Racine and Kenosha, the hosts, gave second place to Lake County, Illinois.

Marty Christopherson and Len Meistad, co-tournament directors, had this one well in hand. The prepared schedule showed that each county was represented by twelve pitchers, six pair of doubles, who met all other county teams in their division. The two divisions were designated East and West. That meant nine games of forty shoes for each doubles team.

For the most part, pitchers were of the garden variety. Handicapping often played an overbearing part in the win - loss column. Milwaukee County, 30 1/2, Lake County, 29 1/2, Racine County, 25, and Kenosha County, 23.

**BROKEN HORSESHOES
WELDED EXPERTLY**


MARV GUETZKE
W140 N11017 COUNTRY AIRE DRIVE
GERMANTOWN, WI 53022

PHONE 414-251-4651

6111 MAGNOLIA DRIVE
WISCONSIN RAPIDS, WISCONSIN 54494

OFFICE: (414) 771-3750
HOME: (715) 423-4522

CHRISTOPHER J. KITTI
INVESTMENT PLANNER

 **Charter Investment Services, Inc.**
AFFILIATED WITH CAPITAL FINANCIAL SERVICES, INC.

2323 N. MAYFAIR ROAD, SUITE 502
MILWAUKEE, WISCONSIN 53226

MUTUAL FUNDS CORPORATE BONDS

CASH FLOW REAL ESTATE

GOV'T BOND PORTFOLIOS

TAX FREE SECURITIES

IRA'S SEP-IRA'S

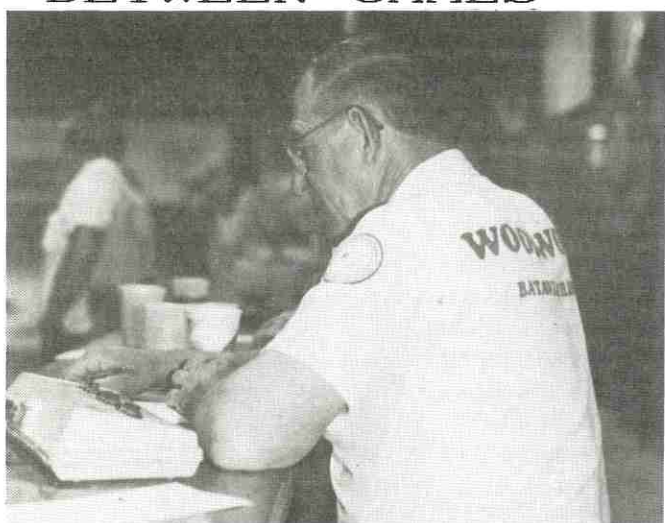
CLUB TEAM TOURNEY



**JANESVILLE
BETWEEN GAMES**



**ALL THOSE RINGERS
BROKE MY SHOE!**



**WOODY, WATCH THOSE
RINGERS!**



BOY! HE'S HOT!



**GET GOING GIRLS,
30 SHOE GAMES
COME IN FAST!**



WHAT'S NEW?

**HORSESHOE
WORD SEARCH**

CONTRIBUTED BY HELEN SORENSEN

SADLFMHQSWYBEKORTEAMWADSYIF
 BHALLOFFAMEGNSVJQXKBJZGUNRT
 EJOCIGOVZACIMHPHLEQLPMSDAJK
 KNPERUTXDFPTUCLUHMLSIUGDFTI
 VAXLSDWGPQIXFKRWTAVECOJEIDF
 BYNOEYOCBITDPJSURABKMHGNUSY
 ACLZQHORSESHÖENEALXZEYTDDBEG
 EMMMPBRJNANODIUGYQWSSCORERVR
 MZQCLWEEKLYEPNNDWMRSLHNAQPA
 ARYKLJFKPHXIILTOCPEQOSTTFUX
 GAHFPGGZKGRWNAZQIORSYUHHJMO
 BEZHLDYJLXCIBFYRHTUPEISETPG
 DGIEAVXMAZCNEYHPEWWDNFLNSOI
 FORTYFEETKVGUCOYCSMKHQBQDKJR
 OFACOLBDWXYEPRNGZTADDOUBLESH
 UZVYFIYROPARTNERTLBXECHUNIK
 REPSFPKWLBNNSNMAEGMUEBGTOASX
 DGAUDSQCWVXPLEAFQMEGHWFJXI
 ETCIMHJROBQNUODEZLUVEIRGWZC
 ALIFPOINTSBJPDUROGBQFANWBUT
 DRDGPEHSOSMGYONEAYSPOZTNKEV
 HJNOKIYPURMLYIKETEARZWYXENP
 CSAIMYQKRBFEAELHJLPBXUPFSRU
 OEHNHLKJNINJHGSJRTIYQVYROAS
 FNBELKGAOMDITVDYUTQNTXWVTY
 DSSGHEABMWFLCHRSDCOREMQAUX
 KJPDFEZAECWZFOZYRLHISRNKQFT
 DFCOYWMDNHPAIBKRMPHXWTEIZEJ
 ZCBGROYPTDHGNVTLSTRUOCVOOTHY
 IALECTGERXXUAJNWYSMKWFPZGSUB

LOCATE:
 BEGINNERS
 CLOSESHOE
 COURTS
 DOUBLES
 FLIPSHOE
 FORTY FEET
 FOUL
 FOUR DEAD
 GAME
 HALL OF FAME
 HANDICAP
 SCORE
 SCORER
 SHOES
 SPORT
 STAKE
 SUDDEN DEATH
 TEAM
 THIRTY FEET
 TOURNAMENT
 TROPHIES
 WEEKLY
 LEAGUE
 MONEY
 NHPA
 PARTNERS
 PITCH
 PITS
 PLAYOFF
 POINTS
 PRO
 REFEREE
 RINGERS
 RINGERALL

JUNE CALENDAR

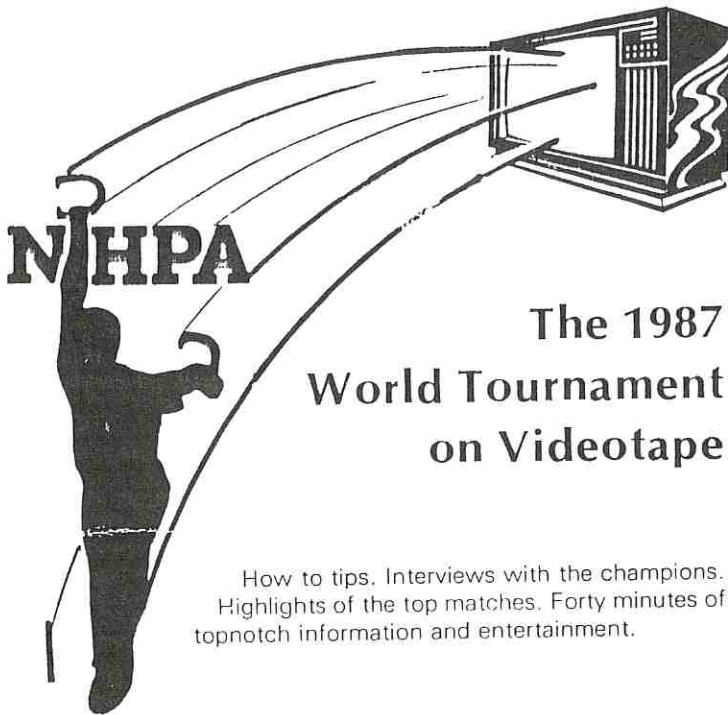
June 11, 12
 Brothertown Open, Archie Johnson, N2174 Hwy 151, Chilton, WI 53014 PH. 414-829-7013 Deadline
June 2.

June 11, 12
 Eau Claire Open, Eldon Eaton, 3027 Saturn Ave., Eau Claire, WI 54703 PH. 715-834-8027 Deadline
May 28.

June 11, 12
 Janesville Moose Open, Bun Carley, 549 Edgerton Rd., Edgerton, WI 53534 PH. 608-884-3691 Dead-
line May 31.

June 18, 19
 Marshfield Open, Roger Schultz, 1100 E. Cleveland St. Marshfield, WI 54449 PH. 715-384-2668 Dead-
line June 8.

June 24, 25, 26
 Goldendale Open, Ed Wing, W204 N11912 Goldendale Rd., Germantown, WI 53022 PH. 414-628-1484
 NHPA SANCTIONED Deadline June 5.



The 1987 World Tournament on Videotape

How to tips. Interviews with the champions. Highlights of the top matches. Forty minutes of topnotch information and entertainment.

If you're serious about horseshoe pitching, you'll want this tape to show your friends, family, and your club. A novelty "rock video" entitled "These Shoes Were Made For Pitchin'" is a ton of fun.

The producers have received letters from folks who have seen it and everyone is enjoying it. Join the fun and order your copy today.

If you were at the tournament, you're probably on the tape. If you weren't, you're sure to see someone you know. We can't say enough, and we think you'll agree when you see it.

\$34.95

PLUS SHIPPING & HANDLING

YES! Please send me a VHS Beta Videotape
1987 World Horseshoe Tournament



Name: _____
Address: _____
City: _____
State: _____ Zip Code: _____
Phone: _____ Date: _____

Checks or money orders for \$34.95 plus \$2.50 shipping and handling
Mail to: National Horseshoe Pitchers' Association, Box 278,
Munroe Falls, Ohio 44262

DEADEYE HORSESHOES NOW

Clydesdale model "DEADEYE" Horseshoe. Drop Forged

Susie Pritzlaff
W204 N11912 Goldendale Rd.
Germantown, WI 53022
Ph. 414-628-1484

Bill Courtwright
P.O. Box 742
Fenton, MO 63026
Ph. 314-677-2200

1988 EAU CLAIRE OPEN 1988

22nd ANNUAL HORSESHOE TOURNAMENT
CARSON PARK - EAU CLAIRE, WI
SATURDAY & SUNDAY - JUNE 11-12, 1988

QUALIFYING:

Send last years league or tournament average, to the nearest hundredth. If no average, qualifying score sheet of 100 shoes. Entrants will be notified of class and time they will pitch.

ENTRY FEE:

\$10.

All classes will be 8 persons. If 6 man classes are needed to fill a schedule, they will receive a \$2 refund. Junior classes are free.

All classes will pitch 50 shoe games.

Tournament is limited to first 174 entries, enter early.

DEADLINE:

May 28, 1988. Those who drop out after deadline will forfeit their entry fee.

SCHEDULE:

Saturday - June 11

9:00 AM - Men N-O-P
Ladies C-D

12:30 PM - Men K-L-M
Boys A-B

4:00 PM - Men H-I-J
Ladies A
Girls A

Sunday - June 12

9:00 AM - Men D-E-F-G
Girls B

12:30 PM - Men A-B-C
Ladies B

We reserve the right to alter the schedule.

AWARDS:

Cash or Trophies

8 in a class - First 3 places - \$35.-\$25.-\$15.

6 in a class - First 2 places - \$30.-\$20.

Juniors receive trophies.

ENTRIES TO:

Eldon Eaton
3027 Saturn Ave.
Eau Claire, WI 54703
Phone: (715) 834-8027

FOR SALE

18 Scoreboards with 50 shoe counters.
The Eau Claire Club will sell the Carson Park scoreboards.

Contact: Jim Hoff, Pres.
2010 11th St
Eau Claire, WI 54703

Phone (715) 834-0279 - Evenings

WISCONSIN HORSESHOE NEWSLETTER
W204 N11912 GOLDENDALE ROAD
GERMANTOWN, WI 53022

BULK RATE
U.S. POSTAGE
PAID
PERMIT NO. 25
GERMANTOWN, WI
53022

PITCHIN' PALACE

Tournament Schedule 1987-88

This year's tournament schedule takes a little different twist from those of years past as we put together a roster which offers three types of tournament formats to test your skills against your fellow horseshoe pitcher. The tournaments are designed to be simple, inexpensive and yet competitive to make a most enjoyable horseshoe pitching experience.

There will be two traditional eight-person round robin tournaments with scorekeepers provided. They are the "Hall of Fame" and the "Junior Scholarship Benefit Tournament." Entry fee for those will be \$15 per person.

New this year are the "Ringers Only - Keep Your Own Score," tournaments which are eight-person round robins, but only the ringers are counted and the players record their own score on the Pitchin' Palace's electronic scoreboards. This is an alternate pitch tournament and entry fee is \$10. Based on eight persons in a class, prizes will be \$30 for first, \$20 for second and \$10 for third. The balance of money will be put toward users fees.

Back again are the ever popular "Homer" tournament. "Homers" are doubles, round robin, 80 percent handicap tournaments. Double teams are placed in classes and the class winners advance to championship playoffs. Prizes are 40 percent of the entry fee for first, 20 for second and 10 percent for third.

The tournaments are
Sat. and Sun., Oct. 3-4
"Ringers Only" Deadline is Friday,
Sept. 25

Sat., Oct. 17
"Homer" Deadline 12:30 p.m. same
day

Sat. and Sun., Nov. 7-8
Hall of Fame Tournament Ceremony
for Hall of Fame inductees on Sunday after-
noon. Deadline Fri., Oct. 30

Sat., Nov. 28
Homer Tournament. Deadline, 12:30
p.m. same day.

Sat. and Sun., Dec. 5-6
"Ringers Only" Deadline Fri., Nov. 27

Sat., Dec. 19
Homer Tournament. Deadline 12:30
p.m. same day

Sat. and Sun., Jan. 2-3
"Ringers Only" Deadline - Mon., Dec.
28

Sat., Jan. 19
Homer Tournament. Deadline 12:30
p.m. same day.

Sun., Jan 31
"Super Bowl Sunday" Pitchin' Palace
has planned a gala football-horseshoe party.
More info will be available later but a fun
tournament with special food treats will be
offered

Fri., Sat., & Sun., Feb. 12, 13, & 14
Pitchin' Palace Team World Tourna-
ment (FORMERLY CAN-AM). Teams from
the United States and Canada will compete
for thousands of dollars in prize money. The
top pitchers in the World will compete.

Sat. and Sun., March 5-6
"Ringers Only" Deadline Fri., Feb.
26th.

Sat., April 9
The Wisconsin Club Team Tourna-
ment. Clubs bring their top pitchers to the
Pitchin' Palace for a daylong team shoot-
out. Green Bay Club is the defending
champion.

Sat., April 16
"Homer" tournament. Deadline 12:30
p.m. same day.

Sat. and Sun., May 7-8
"The Junior Scholarship Benefit"
Tournament. Part of the entry fee will be
donated to this very special fund. Eight-
person round robin with scorekeepers pro-
vided. This is the first of Wisconsin's Sum-
mer Tournament Circuit.

Send all entries to PITCHIN' PALACE,
14000 Leetsbir Road, Sturtevant, WI,
53177 or to Tournament Director
Richard Hansen, 3085 S. 76th Street,
Franksville, WI 53126. Dick's
telephone number is 414-835-1321.



14000 LEETSBIR ROAD
STURTEVANT, WI 53177

Off I-94 on West Frontage Road
Between Hwy. 11 & Hwy. 20

414-886-8555

1 Hour North of Chicago
1/2 Hour South of Milwaukee