

◆ WISCONSIN HORSESHOE NEWSLETTER ◆

AN AWARD WINNING PUBLICATION

CIRR. 409

MAY 1998

WHPA RULES REVISED AT LANDMARK SPRING MEETING

The WHPA Spring Meeting was held on the courts of the Sandbar at Arena, Wisconsin. Fifty-two members sat through a two and one half hour session. It was the first time for a convention at the Arena site and the first time the members had an opportunity to suggest bylaw changes in the past two years.

President Ken Jaeger introduced honored guests.

Tommy Bartlen, of West Allis, Jaeger extolled, is a six time State Champion who began his run while pitching the West Allis State Fair Park tournaments. Now 80 years young he continues as long time president of the Washington Park Club in Milwaukee.

Dave Forseth, owner/operator of the Sandbar took a bow at Jaeger's request, as the man we have to thank for providing these courts and doubly so because he does it free of charge.

Jaeger started the meeting, officially at 12:15 PM Saturday, March 21st, by asking his officers for their reports.

Secretary, John Secord reviewed past meeting minutes and reported a balance of \$6,782 in the WHPA treasury.

1st VP, Terry Sternberg has gained an OK from the Hall of Fame Committee to use part of the HOF display to show some articles involved in earlier days of the game of horseshoes, perhaps shoes with a history. Sternberg mentioned that he is still in contact with personnel at the Milwaukee Sport Show. There was no room for an exhibition this year. He will try again for the 1999 show.

Junior Scholarship Fund Coordinator, Tom Steinke reported little Fund change. The Fund stands at \$10,432 - liabilities \$4,300.

NHPA Secretary- Treasurer, Dick Hansen entertained the horseshoe group with a state of the NHPA message beginning with the fact that, World Tournament entry forms are now available. The deadline is May 7th and the entry fee has increased to \$75. First place will now pay \$300 (up \$25) and cash awards will extend through 6th place (formerly to 5th).

Hansen claims contrary to popular belief, housing is still available for the World Tournament this year in Ainsworth, Nebraska. In fact, he said there's a new Comfort Inn under construction across the street from the City Park, site of the WT courts. It's scheduled to be open for occupancy before the start of the WT, July 20. A call to the national reservations number may do the trick.

Hansen previewed early bidders for the year 2000 World Tournament as; Bismark, North Dakota, Midland, Michigan, and Gillette, Wyoming again. 1999, you will remember, is set for Greenville, Ohio - date unknown to this source.

Lorraine Sternberg in promoting her job as NHPA Junior Program Director, asked the members to consider launching a grade point average award for juniors. The motion was killed when Hansen pointed out that the executive board has the power to make awards of their choosing. That was that. No further discussion evolved to determine the feeling of the members.

Edi McKinney, the chair for the Hall of Fame Committee reported the results of their short meeting just prior to this one. The 1998 inductee, McKinney announced, will be Dick Hansen. The news elicited deserved applause. Hansen is well known.

When discussing an appropriate site for the Fall Meeting, John Udelhofen made a pitch for the Sandbar. Putting it to a motion, he proposed all future WHPA meetings be conducted at the Sandbar -indefinitely. Some found a problem with the word "indefinitely" until the word was defined as not necessarily 'without end' but merely 'until changed.' Motion accepted.

The Constitutional change expanding the executive board by adding one more VP passed by acclamation. The proposal had been published in the Newsletter by Ken Jaeger, however, originated with Dick Hansen. A move to incorporate the position of Jr. Scholarship Director as an executive board member failed. It was said that it would demand a re-write and publication necessary for a Constitution change. The Fall Meeting election slate will include a spot for the third Vice President.

Other changes included establishing the annual State Doubles tournament by including it in the bylaws. The original published form of the bylaw addition included a March 31st deadline date. It also included a sentence to the effect that money awarded to junior pitchers would be retained by the scholarship Fund in their name. It was modified eliminating the mention of a deadline date and dropping the last three words, "in their name." On that basis the motion was received by acclamation.

As a director of the NHPF, the National Foundation, Dick Hansen has a keen interest in promoting donations. He suggested and members confirmed a \$200 gift in the name of the WHPA. Randy Hansen, President of the Eau Claire Club responded saying the Eau Claire Club would match the WHPA donation. In preparation for the State Tournament this year, the Eau Claire President announced the entry fee will be set at \$25 and that their 1998 State Tournament T-shirts are now on sale.

Also under New Business, Terry Sternberg suggested moving up the due date for NHPA cards. It was OK with the Secretary, John Secord, and members alike. The normal due date is now June 30th. Afterwards a late fee of \$2 is assessed.

....Jeff Secord, the younger, introduced a motion to reduce the number of trophies awarded at the State Tournament to three in a 10-person class and two in a 8 or 6 person class. Somebody said the trophy for third was an unearned reward - the worst thing that could happen at the State. John Udelhofen argued that he valued his own third place trophies more than little cash they may have cost. The motion failed by acclamation - everybody to two.

Member approved raising the minimum wage for score-keepers to \$1/pitcher/game also agreeing the fee should be included in the entry and paid out by a tournament official. but thought little of the idea that State Tournament trophies should be graduated in size according to placement within class.

In a parting shot Ken Jaeger recommended consideration of a new computer program to Secretary, John Secord.

And so the WHPA blue book is closed for the balance of the century. The Wisconsin Horseshoe Pitchers Association as an affiliate of the National Horseshoe Pitchers Association is dedicated to the proposition that this game shall remain the same.

WHPA OFFICERS

PRESIDENT

Ken Jaeger Sr
N3539 Knight Rd
New London, WI 54961
920-982-6287

SEC-TREAS

John Secord
W6868 Brown Rd
Fond du Lac, WI 54937
920-922-0080
whpa@execpc.com.

1ST VICE PRESIDENT

Jane Smith
1481 180th Av
Balsam Lake, WI 54810
715-485-3057
jmsmith@bucky.win.bright.net

2ND VICE PRESIDENT

Terry Sternberg
W206 N13520 Woodside La
Richfield, WI 53076
414-677-3300

HALL OF FAME

Edith McKinney
2339 205th St
Luck, WI 54853
715-825-2149

JR SCHOLARSHIP FUND

Tom Steinke
155 S Charles St
Waukesha, WI 53186
414-542-0252

NHPA REGIONAL DIRECTORS

East

Jim Haupt
5075 N Elkhart Av
Milw, WI 53217
414-964-2735
jimhaupt@aol.com

West

Ron Berg
5375 Blue Ridge
Barneveld, WI 53507
608-924-5574
bfarms@mhtc.net

Nor-West

Dave Schorbahn
Rt 2 526 Osseo Rd
Independence, WI 54747
715-985-3515

South

Earl Paulson
7105 S Co Hwy H
Beloit, WI 53511
608-879-2304

NHPA Jr Promotions Dir

Lorraine Sternberg
W206N13520 Woodside
Richfield, WI 53076
414-677-3300

NHPA Sec-Treas-

Richard Hansen
3085 S 76th St
Franksville, WI 53126
414-835-9108
nhpa.sec.treas@worldnet.att.com

THE CORRECTION CORNER

Not many complaints on last issue. Team World dates were a little off and some new sanction numbers were really last year's models. If a tree falls and no one sees it - did it?

COMING EVENTS

MAY 1-2 BELOIT ENCORE \$18
Earl Paulson 7105 S Co Hy H Beloit, WI 53511
608-879-2304 #28-98-008 D/L 4-18

MAY 9 EAU CLAIRE EARLYBIRD skpg ex .50/ga \$5
Randy Hansen 2536 Hillcrest Pky Altoona, WI 54720
715-832-5095 28-98-011 D/L 4-30

MAY 7 LAST DAY TO ENTER WORLD TOURNAMENT
MAY 9 MUSKEGO DOUBLES \$20/team
Tom Steinke 155 S Charles St Waukesha, WI 53186
414-542-0252 mixed unsanctioned D/L 5-2

MAY 17 OXFORD OPEN Singles Oxford VFW \$10
Francis Schalk 135 Edgewood Dr Oxford, WI 53952
608-584-5264 Limit 48 28-98-012 D/L 5-3

MAY 15-16-17 TEAM-WORLD \$200/team
Earl Paulson 7105 So Co Hy H Beloit, WI 53511
608-879-2304 #28-98-009 D/L 4-15

MAY 23*24 PLATTEVILLE NHPA SINGLES \$15
Norm Mauthe 865 Eastman St Platteville, WI 53818
608-348-9697 28-98-013 D/L 5-8

MAY 29 SESQUICENTENIAL EXPO MADISON
MAY 30-31 ARCHIE'S CLASSIC in Kewaskum \$15 at cts \$17
Jim Haupt 5075 N Elkhart Av Milwaukee, WI 53217
414-964-2735 Limit-120 partially mixed 28-98-014 D/L 5-17

JUN 6-7 WOLF RIVER OPEN; New London \$13
Ken Jaeger N3539 Knight Rd New London, WI 54961
920-982-6287 Limit 80 28-98-015 D/L 5-23

JUN 13-14 EAU CLAIRE OPEN skpg ex .50/ga \$15
Randy Hansen 2536 Hillcrest Pky Altoona, WI 54720
715-832-5095 28-98-016 D/L 5-31

JUN 13-14 BELOIT SPRING SINGLES incl skpg \$17
Earl Paulson 7105 S Co Hy H Beloit, WI 53511
608-879-2304 may be mixed 28-98-017 D/L 6-1

JUN 14 ST JOHN'S DOUBLES; Waunakee \$10/team
LeRoy Tip Wipperfurth Hy K 6010 Waunakee, WI 53597
608-849-4655 on grass unsanctioned D/L 6-14(none)

JUN 20-21 MUSKEGO OPEN \$15
Tom Steinke 155 S Charles St Waukesha, WI 53186
414-542-0252 28-98-018 D/L 6-7

JUN 20-21 MARSHFIELD ONE \$15
Randy Rein 201 Second St Mosinee, WI 54455
715-693-1199 may be mixed 28-98-019 D/L 6-6

JUN 26>28 GOLDENDALE; Germantown skpg \$1/ga ex \$15
Terry Sternberg W206N13520 Woodside Richfield, WI 53076
414-677-3300 28-98-020 D/L 6-14



WISCONSIN HORSESHOE PITCHING SUBDISTRIBUTORS

GAME RELATED ITEMS

Elaine & Cliff Troullier

3126 Wagon Wheel Road, Manitowoc, WI 54220
(920) 682-3197

KEY All dates in bold print indicate WHPA approved events. NHPA sanctioned tournaments also in bold numbers. Note: Some WHPA approved events are unsanctioned. Other events, on this calendar are listed for information only. Call, 414-964-2735 6 wks. prior for free listing in this column.

OXFORD

Francis Schalk cordially invites all those pitchers not attending the Team-World to the first sanctioned tournament at the Oxford V.F.W. Oxford is centrally located in the Wisconsin Dells area.

Schalk said he may be forced to may accept entries even after the normal deadline in an effort to fill the event its maiden presentation. See the coming events column to give Schalk a call.

KEWASKUM

Time is growing short for entry to Archie's Classic. To accomodate pitchers the event has moved from Brothertown to the 10 beautiful courts of Kewaskum. Jim Haupt, the same old Archie's Classic director, will have the support of the Kewaskum Club for concessions. Self score-keeping will add to cash prize awards.

BELOIT..

will cap off its surge of spring tournaments with the June 13-14 Spring Singles to be conducted on the regular, Renley, courts.

We have 13 clay courts, well kept, with concrete walkways.

Pitchers desiring to offset score-keeping charges by marking some other games are asked to come early or stay late. The Beloit Club will do its best to accomodate.

* If your upcoming June tournament was not listed above (flyer ads excepted) it is an indication that the tournament director opted not to respond to a direct mail request from this Newsletter.

SESQUICENTENIAL & HORSESHOES

The State of Wisconsin is going to include horseshoes in a May 29th Sesquicentennial event in Madison. Earl Paulson has been contacted by the event coordinators to organize the horseshoe demonstration. and agreed to furnish a portable court. Paulson, corresponding with the coordinators indicated that the WHPA will provide some top level pitchers, perhaps state champions and some garden variety pitchers. The event is expected to be between the hours of 2 PM to 6 PM on the Square in Madison. On site promotion will be the job a few NHPA and WHPA executive people and any other interested member. Everybody is invited to participate. It's a chance to showcase the sport.

Subj: **RUDY LARSON**
Date: 98-03-30 20:15:17 EST
From: jmjsmith@bucky.win.bright.net (Jane Smith)
To: Jimhaupt@aol.com (Jimhaupt)

Just a quick note to let you know that if don't know or remember Rudy Larson of River Falls. He is a little man who has pitched shoes forever and loves the game. He has made many friends at the courts and misses tournaments and friendships. He always gave us a hard time about the "cold" weather at our tournaments and insisting he pitch against the 30"foot pitchers. He still came to every tournament when he was healthy enough.

He suffered a stroke last fall and is not mending well. Larry Danielson got a message to me that Rudy's address is: Rudy Larson, 300 Wing, Kinnie Home 1663 E Division, River Falls, WI 54022. Any notes or cards would make his days brighter. So if you could put a small notice in the next newsletter we northerners would very much appreciate it:-) Thanks and Happy Easter!!

EAU CLAIRE - OAKWOOD EXPOSITION

by Elly McCarn

Saturday and Sunday, March 14-15, 1998 were beautiful days with the temperature in the low 70's at the Oakwood INDOOR tournament in Eau Claire.

Tournament director/club president, Randy Hansen was at the event on Saturday but had to leave early to fly to Las Vegas. VP Eli Lucas, Treasurer Rob Rehm, and sec'y Elly McCarn were on hand to conduct the tournament. This was the third Oakwood event and again Bill Schaaf brought his two portable clay courts from Chetek.

Several club members were present to answer questions from the bystanders, many of whom stood in disbelief seeing ringer after ringer. Sister Felissa of the Indian Mission School in Stone Lake brought six of her students and another teacher to observe. Horseshoe is being taught at that school.

The six pitchers put on a great show. Dale Lipovsky, three time World Champion, won the tournament patch for men with 8 wins and 6 losses averaging 70.1% - high game 78%. Randy Rein, four time Wisconsin Champion, won 6 times, lost 8 averaging 66.7% pitching a high game of 82%.

Club member, Gert Wilcziek earned the tournament patch for women with 5 wins and 2 losses averaging 53.4% and a 64% high game. Kathy Hanson had 2 wins and 4 losses, with 54% being her high game.

Pudge and Barrent Dahl were the Junior Boys who pitched exceedingly well. Pudge, who just turned 16, had high games of 74% and 78%. He won 4, lost 4 averaging 60.3%. He defeated Randy Rein averaging 66% against Rein's lowest game of 58%. Pudge's 78% game was a win over Lipovsky's 70%; score, 32-19. Barrent pitched only a few games averaging 54%.

Thanks to all our club members who worked and made this an enjoyable tournament.

THANKS AGAIN from Randy Rein

Thanks again for inviting me to demonstrate horseshoes at the Oakwood Mall. I am always very honored to have this opportunity to help promote horseshoes for your club and to pitch against Dale Lipovsky.

The Badger and the Gopher played ten games in which one or two shoes could have changed the outcome. They finished with a 5-5 tie.

A fun time was had by all. Marge and Wesley enjoyed themselves as well. Thanks again for everything.

USED HORSESHOES FOR SALE

Roger Poutanen work no. 715-842-6825 (M-F 8:00-5:00)
809 Burns St home no. 715-675-9290
Wausau, WI 54401

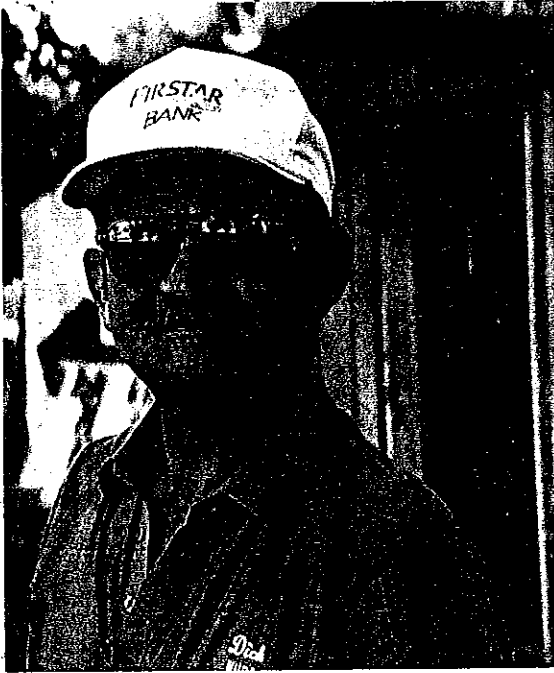
All shoes sold on a first come - first served basis. If you want to purchase any of these shoes please call me to reserve them. I'll mail them to you for an extra \$3 per pair but I must have the full payment in advance.

HORSESHOE	CONDITION	WEIGHT	PRICE
V.I.P,	like new	2 lb 9 oz	\$30
Greet Grabber	very good	2 lb 8 oz	#20
Reno	like new	2 lb 9 oz	\$20
Webb	very good	2 lb 9oz	\$15
Hugger	very good	2 lb 8.5 oz	\$10

DICK HANSEN - HALL OF FAME

The announcement came at the Spring Meeting only minutes after the selection committee made their decision, Dick Hansen is the 1998 WHPA Hall of Fame inductee.

IS THIS MAN OF AGE?



DICK HANSEN NHPA SECRETARY-TREASURER

Hansen as the NHPA Secretary Treasurer from Franksville is well known to have qualified in many forms of service to the sport of Horseshoes - League President, State Tournament Director, and WHPA President to name a few.

The question remains, is the man old enough? Age has been a major qualification for the Wisconsin Hall of Fame. Hansen is just past the half century mark and will himself admit that Hall of Fame selection should justifiably come only after a lifetime of service.

He's now a member of AARP and retired from AT&T. The former will take people at a mere 50 years of age. AT&T is known for inducing its highly paid executives to take an early buyout. Moreover, the NHPA has been known to accept executives of any age.

It is unknown whether his wife, Paulette, is yet a member of AARP. It is a fact that she is currently employed with AMERITEC and by the NHPA executive's own admission, she has been active in both WHPA and NHPA administration. She was also presented for nomination to the Hall of Fame.

Every time another member is inducted into the WHPA HOF there is one less member paying dues to this state. Hansen, by his induction now gets a free ride from the WHPA - no more state dues. That should be reason enough to take a hard look at those we nominate to the HOF in the future.

LEN LIPOVSKY MINNESOTA RD AND FORMER BADGER WRITES

Hi Susie, you Badger Pitchers and Snowbirds,

A belated wish to you all for a very happy 1998 & enjoyable & successful horseshoe season.

I thank your Hall of Fame Committee and whoever is responsible for entering John Brezina to your Hall of Fame. He was a life-long friend of mine, his wife, Delores was my classmate at Boyceville High. John was one of the better pitchers a few years back and really loved the sport. I recall when Dale & I started going to Boyceville, John was always ready to play a few games. He was one of the main forces behind the Boyceville courts, league and tournament which was usually held during the Pickle Festival. It was one of the most enjoyable.

Your State Walking Doubles Tournament is also of much concern to me. It is very much like the Paul LaCrosse Walking Doubles in Colorado. Would like to hear comments on this type of tournament in the future. Our pitchers here in Minnesota seem to be content with the top pitchers pitching as a team and not walking. I'm not condoning it. I think it can be improved upon.

Would also like to comment on one of the hottest topics in the NHPA - the 30' vs. 40' pitchers. In view of the fact that I either had to move up or quit, my choice was to move up. Oh yes, it's an entirely different ballgame. I didn't think I'd have to move up but now have a physical impairment in my legs. Sure it's fun to make more ringers consistently but to get scowled at when you beat those 40 footers, even while giving a substantial handicapping of makes me wonder what to do.

A comment* that came from NEWSLINE several months ago sums up my feelings quite well. In open sanctioned tournaments where 5 or fewer 30 ft pitchers are entered, they (30') should be included into the 40 ft classes. If 6 or more 30' pitchers are registered for the tournament they should be placed with their own division. This doesn't apply to World or State tournaments. Let the tournament directors decide which is better, regardless, I still like to pitch whenever I can, with the top "dogs" same as is done in the Eau Claire Open. Good Luck.

**[Actually the "comment" is a proposed bylaw change affecting only California but would be mandatory. ED]*



"Home of the 7-1/2 lb. Pizza"

**Frank & Barb's
COUNTRY INN**

Downtown Le Roy

Featuring the Country Inn's Famous Pizza — Custom Built To Your Tastes!

- Sandwiches • Char Broiled Steaks
- Soups Daily • Friday Fish Fry

FRANK & BARB DOHRWARDT — Proprietors Closed Tuesday
(414) 387-3311 - Mayville (414) 583-4534 - Oakfield 1-800-201-4534



The CHIEFS - Mike Menden, Jerry Volz, Fred Decorah, Harry Nelson

RIVER VALLEY RUMBLE

Ron Berg sets a full house limit on the RVR - eight 4-man teams. It's a necessary evil with the great number of rounds (14) played. A couple of teams were refused entry due to the anticipated schedule.

Each 4-man team plays every other team in a two game doubles match. The first time around captains play captains. After the lunch break, captains play the other half of the teams.

Forget about winning every game; it's just not in the cards. Avoid losing too many is the realistic approach.

Berg uses 180 total percentage points limit in an effort for keen competition

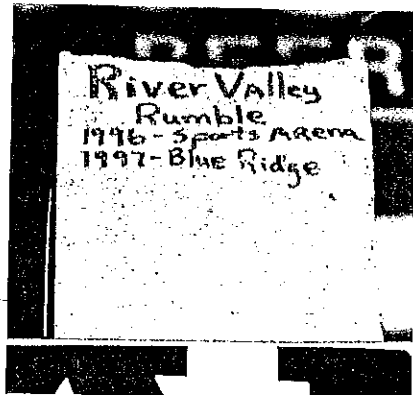
The trophy is just a broken piece of a concrete block originally found on the premises. There was also a cash award of \$240 for first and \$160 for second.

Team ringer percentages ranged from 44% on top to a low of 31%.

RVR TROPHY

The RVR trophy, seen left, is yet to be engraved with this year's winning team. Its place of honor is over the doorway to the Lady's Room in the Sandbar Sports Arena.

Individual winners were awarded cash. The trophy stays where it is.



RVR WINNERS

First Place	Second Place
<u>CHIEFS</u> 23/5 44%	<u>SANDBAR</u> 19/11 37.9
Fred Decorah 38.6	John Crook 52.9
Harry Nelson 45.0	Jim Brown 28.6
Mike Menden 44.3	Ken Frame 35.0
Jerry Volz 48.2	Dave Forseth 36.1

JUNIOR SCHOLARSHIP TOURNAMENT

by Tom Steinke

Thanks to everyone who pitched the Jr Scholarship tournament. Clayton Gage was tournament champ with 78%. He also had an 86% game. John Crook had a nice 82.5% game. The classes were close and competitive. Class E was highest over average with more than half the class in the 40's.

All classes played ringers only except class D. They used ringers only plus a point counter that Jim Haupt posted on the boards. Four games were decided by points and in one game player 1 had one more ringer but five less points. This is the future for tournaments having score-keeper problems.

We had a raffle going to benefit the Fund. Galen Kozel of Mukwanago won the black satin team jacket with the large WHPA logo.

Results NHPA sanc. #28-98-003

- A Clayton Gage 78.0; Randy Rein 69.2; Ralph Maylahn 65.2
- B John Crook 58.9; Elaine Troullier 56.4; Gerald Weikert
- C Ron Lingard 48.2; Cliff Troullier 43.9; Tony Scrima 45.0
- D Julian Tijerina 43.5; Ken Frame 42.9; Bill Dahmen 39.6
- E Len Mauthe 45.4; Ron Berg 42.9; Rich Conrad 32.1
- F Tom Steinke 24.6; Don Burmeister 25.4; Larry McCutcheon 16.8

The Spring Meeting kept all 8 courts out of action for 3 hrs.

ARENA SPRING SINGLES

The week before Easter was the end of the season for the indoor events at Arena. Starting last October, Arena hosted eight sanctioned tournaments and an untold number of unsanctioned events. Numbers of entrants in this final event probably suffered from slight overexposure. John Crook handled the abbreviated schedule in one day without a hitch.

- A1 Clayton Gage 78.6; Dave Schorbahn 55.4; Arnie Walton 50.0
- A2 (Jrs) Dustin Dahl 63.7; Wesley Rein 46.8; Barrent Dahl 43.2
- B Elaine Troullier 57.9; Tony Scrima 50.0; Chris Dahl 44.6
- C Ken Frame 41.8; Bob Anderson 44.6; Ken Olson 46.1
- D Jim Brown 42.1; Milt Larsen 45.4; Len Mauthe 38.2
- E Don Burmeister 22.0; John Aeschlimann 26.4; Ed Wheeler 29.6
- F Ivan Ruzig 22.0; Roger Olson 26.0; Earl Simler 18.5

GOLDENDALE WINDY HILL GOLDENDALE 2 1998 CLUB-TEAM CHAMPS



Goldendale wins CT trophy for 5th time in 14 year history of tournament.

Windy Hill repeats as "B" Champions

Gold-2 takes "C" class with 15 wins.

All classes placed first and second in undisputed fashion - no play-offs. Of the 20 games in each class a number of teams tied at ten wins. Cash awards paid just first (\$256) and second (\$132).

Club Team pitchers have become accustomed to the self help type tournament - marking the leader board, turning in score sheets, and marking their own score when necessary. B class, caught in the middle, carried the clipboard most often. If it were not for Earl Paulson breaking in some new score-keepers many more pitchers would have had to do their own.

Sure we pay the rent for the building but the tournament is indebted to the Beloit Club for the hours of labor setting up the 24 courts.

Breakdown of the entry fee on a per person basis is: \$1.94/rent, \$.50/WHPA fee, \$1/statisticians, \$16.16/awards, leaves \$.40 to cover misc. costs of producing the schedule and these results.

Congratulations to all. You made it work.

Close Doesn't count says goodbye. Gold people say ..., Hello!

A Class

GOLDENDALE			
	Lorraine	Sternberg	70.40%
1st	Ralph	Maylahn	64.00%
	Tony	Scrima	48.80%
	Ken	Heinritz	50.00%
CLOSE X COUNT 12 wins			
	Clayton	Gage	78.00%
2nd	Edie	McKinney	62.40%
	Jane	Smith	19.60%
	Sue	Helene	57.60%
SANDBAR 10 wins			
	John	Udelhofen	60.00%
3rd	John	Barden	50.40%
	John	Crook	52.40%
	Jim	Larson	31.20%
GREEN BAY 10 wins			
	Mer	Sorensen	53.20%
4th	Steve	Wiegert	50.00%
	Phyllis	Davids	47.20%
	Roxanne	Sellisen	33.20%
INDEPENDENCE 10 wins			
	Dave	Schorbahn	53.20%
5th	Dustin	Dahl	60.40%
	Barrent	Dahl	48.00%
	Bill	Schaaf	20.80%
BEST IN БЕЛОIT 2 wins			
	Buck	Huffman	39.60%
	Jerry	Schroeder	36.80%
	Paul	Wilson	28.40%
	Ron	Yutri	27.60%

B Class

WINDY HILL 14.5 wins			
	Gus	Schram	56.00%
1st	Rick	Poppe	49.60%
	Ken	Kosky	23.60%
	Ed	Hack	42.00%
COMBINED LOCKS 13.5 wins			
	Elaine	Troullier	48.40%
2nd	Cy	Srenaski	31.20%
	Cliff	Troullier	46.00%
	Wally	Srenaski	22.40%
KENOSHA-1 12 wins			
	Lloyd	Johnson	35.20%
3rd	Bill	Hagen	36.40%
	Glenn	Bogenschneider	46.00%
	Jan	Fisher	44.00%
FIELDHOUSE 8 wins			
	Dick	Hansen	44.00%
4th	Linda	Aber	22.40%
	Maria	Willms	31.60%
	Ron	Willms	35.60%
WAUNAKEE 7 wins			
	Tip	Wipperfurth	38.00%
5th	Fred	Deccorah	31.20%
	Bob	Anderson	32.40%
	Mike	Menden	45.60%
FOND DU LAC 5 wins			
	Jane	Meier	42.40%
6th	Jeff	Secord	39.20%
	Rob	Struebing	22.40%
	John	Secord	32.40%

C Class

GOLD-2 15 wins			
	Tom	Costa	41.20%
1st	Jim	Haupt	43.60%
	Terry	Sternberg	36.00%
	Ken	Davison	33.20%
KEN-2 13 wins			
	Dick	Muhlenbeck	30.40%
2nd	Jerry	Kaplan	32.40%
	Wayne	Berger	41.60%
	Virgil	Beckius	28.00%
SPENCER 10 wins			
	Vince	Jakel	45.60%
3rd	Bob	Gregorich	43.60%
	George	Dracger	25.60%
	John	Van Dyke	24.40%
TOO WINDY 10 wins			
	Ruben	Eckhardt	30.80%
4th	Greg	Hehling	35.20%
	Pat	Spahn	24.80%
	John	Mills	18.80%
BELOIT B'S 9 wins			
	Bruce	McLinn	38.00%
5th	Red	Ferguson	31.50%
	Russ	Burns	23.20%
	Gary	Rackow	36.00%
	Haold	Laws	16.00%
DONNY'S TIME OUT 3 wins			
	Donny	Burmeister	22.80%
6th	Ed	Klauck	22.00%
	Steve	Kamppinen	30.40%
	Dick	Blair	26.40%

John F. Opsteen



Husband of Ann, John Opsteen, 85 of Combined Locks died unexpectedly on March 20, 1998. He was married to Ann for 52 years. Together they raised eight children. Yes, he was a charter member of the Combined Locks Horseshoe Club and will be missed at the annual Mid-East Open. He was there often living just across the street from the Kamps Kourts.

But John was truly a family man, first a husband and father. He will be sadly missed at the 22nd annual Opsteen Invitational Fishing Tournament with his boys. Also will be missed at the annual 819 Quartermaster Corp reunion. John had a wide variety of interests, lived a very full life and will be missed by his family. He was active in both church and village activities as a member of the parish council and member of the village board. He had many friends in the WHPA.

TWO DEAD, ONE

Whiting, Indiana is not that far south of Wisconsin. It's the first burg south of Chicago bordering the state line. Certainly not far enough for a language change but they do talk different there. They're favorite colloquialism is, "Two dead one." They just can't break the habit.

Every once in a while we check out their four court house. Did you know their experiment with synthetic clay is over? A few years ago, tired of the clay dust, the Whiting club switched to synthetic clay. The courts were easier to maintain, just hose down the floor. But complaints were overwhelming. Some visitors vowed they would never pitch there again. The members didn't like the bounce either.

Admitting it was a mistake they went back to natural clay. It's like the "2 dead 1 thing," old habits are hard to break.

The old black ceiling in now white - makes the whole place look bigger and better. Wonder if Larry Farris claims the credit

The building and grounds are a gift of the city. Reportedly it was part of the old waterworks. But, now that a new roof is needed, it looks like the club is going to have to pick up the tab for it.

The roof situation has created a new need - more visitors to buy more pull-tab chances. Sales are easy. It's for the new roof, they say, and if the wager does not prod your sporting interest, one look at the leaks overhead is all it takes. They may just keep the campaign going long enough to cover the labor, materials, and then some.

It appears most of the tournaments are NHPA sanctioned and they, or somebody (Terry Hlavek ?) does a good job reporting averages. You'll be surprised on how little time elapses before Natstats shows that Whiting result.

Bargain hunters will like this one. The world's largest gas station is within a mile of the Whiting Horseshoe Club. Gas was, a mere 89 cents/gal. To get there, hop on the Indiana Skyway and exit at the state line, the toll is only a couple of bucks.



Chet's
CAR CARE

2020 Aberg Avenue
Madison, Wisconsin 53704
(608) 249-9887

Chet Hermansen
Owner

Professional Auto Care for Domestic & Import Light Trucks & Automobiles

DOWN AND BACK

Ida Hostrup, freshly back from a winter in Texas says, "By the way, just for something to think about; Men move up to 30ft at 70 years. How about women moving up, say 3ft, at 70 year?"

All together now...Happy birthday to you, Happy birthday dear Ida, Happy birthday to you.



ASK AN OLD-TIMER

Harold Wendorf says,

Horseshoe pitching began in Roman army camps about 100 A.D.

WISCONSIN HORSESHOE NEWSLETTER
W204 N11912 Goldendale Rd
Germantown, WI 53022
414-628-1484

EDITOR/PUBLISHER
SUSIE PRITZLAFF

STAFF/WRITER
JIM HAUPT
jimhaupt@aol.com

SUBSCRIPTION RENEWAL FORM

8 issues - \$8/yr

amt encl.....

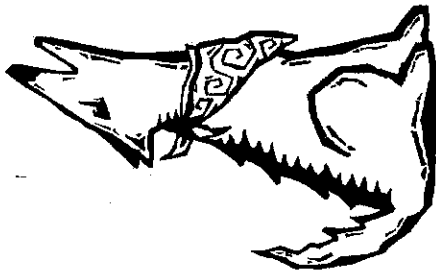
name.....

address.....

city,state,zip.....

check to: Wisconsin Horseshoe Newsletter address appears left

WOLF RIVER



NEW LONDON, WOLF RIVER OPEN SINGLES TOURNAMENT
JUNE 6-7, 1998 NHPA SANCTIONED 28-98-015

HATTEN PARK, NEW LONDON

Entry deadline 5-23 Limited to 80 entries 40-Shoe games
 CLASSES: Men and Women 30 & 40ft. players may be mixed

Entry fee \$13 - no extra fee at courts

Junior class if interest shown. Jrs; free entry, trophy only

PAYOUT: 100% less expenses each class-awards to 1/2 class.

ADDITIONAL DONATED MONEY;

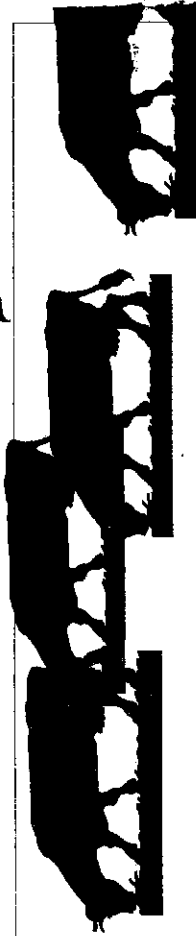
\$75 - 1st cl A Men; \$50 - 1st cl A women; \$50 - 1st cl B

Name.....NHPA card #.....

Address.....

City, State, Zip.....

Mail Entries to: Ken Jaeger
 N3539 Knight Rd
 New London, WI 54961
 414-982-6287



ARCHIES CLASSIC

MAY 30-31, 1998

Archie's Classic will be in Kiwanis Park, Kewaskum, WI.
 More courts (10). - Very nice setting - Big oaks - No cows

The aim is to offer 30 & 40 foot divisions but entries (before May 16th) will tell how the mix will go. Fee is \$15 of which maybe 80% will be left for awards. Expect some type of self-scorekeeping. Food and refreshments by the Kewaskum Horseshoe Club Please enter early; avoid late fee at the courts \$2. **NHPA Sanctioned #28-98-014**

ESTABLISHED EVENT AT A NEW LOCATION

Archie's Classic

Name.....

Add.....

City, state, zip.....
 send check to & in favor of

Jim Haupt
 5075 N Elkhart Av
 Milwaukee, WI 53217
 414-964-2735



Arena winners: top: Len Mauthe, Ken Frame, Rich Conrad, Bill Dahmen, Fred Decorah, Julian Tijerina, & Ron Berg. Lower: Ken Frame, Bob C Anderson, & Ken Olson



Upper: Work at '97 State by the firm of, Jakel, Jakel, Hack, Mills, & Kosky. Lower: Tommy Bartlen, West Allis, Mary and Casey Jones, at Plymouth, Sept. 97



TONY SCRIMA AND RALPH MAYLAHN 1998 STATE DOUBLES CHAMPIONS

Ralph Maylahn, veteran pitcher of Genesee Depot and running mate Tony Scrima of Waukesha have played many many games as straight up, one on one opponents. There's no telling just how much they hate to lose to the other guy. This time they pooled their talents.

Surveying Championship class averages, it looked like the combination of Clayton Gage and Gus Schram had the best chance to wrestle the title from John Udelhofen and John Crook. Maylahn and Scrima were slated to be also-rans



TONY SCRIMA and RALPH MAYLAHN

until they squashed the competition walking through the class with all wins.

The champions received commemorative plaques and a split of the \$116 prize money for 1st place.

Class champions earned a like amount as the cash reached down four places in the nine-team classes.

The Sunday of the event was cold and eventually tiring. Play-offs in two classes extended the day to 5:30 PM-

The Newsletter is soliciting your spin on the tournament.



DICK MUHLENBECK & RAY BILLEN



GEORGE KUFFER & DUANE GROSSEN



LLOYD JOHNSON & GLENN BOGENSCHNEIDER



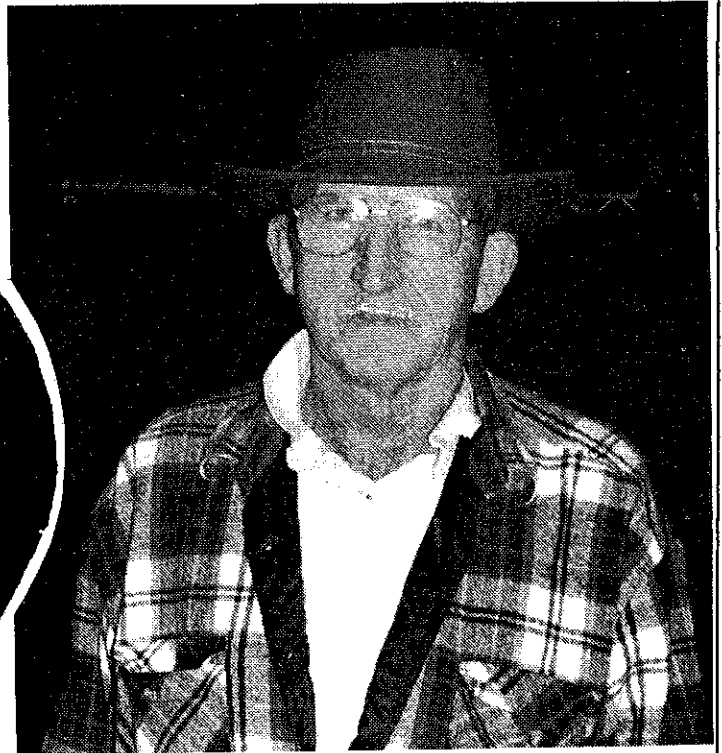
PAT SPAHN & RUEBEN ECKHARDT

Results of the State Doubles Tournament played in Beloit at the Edwards Activity and Sports Center April 26, 1998 were compiled by John Secord and presented through the State Secretary's on-line connection to this Newsletter with minor editing.

			1998 STATE WALKING DOUBLES			April 26		
			TEAM	RESULTS		PARTNER		
			AVE	28-98-007	0.00%			0%
			*****	*****		*****		
POS	W	L						
1	9	0	53.96%	RALPH MA YLAHN	66.25%	TONY SCRIMA	41.67%	
2	7	2	57.92%	CLAYTON GAGE	70.42%	GUS SCHRAM	45.42%	
3	6	3	47.50%	JOHN UDELHOFEN	46.67%	JOHN CROOK	48.33%	
4	5	4	52.50%	DUSTIN DAHL	52.92%	BARRENT DAHL	52.08%	
5	5	4	48.13%	MERWYN SORENSEN	55.83%	STEVE WIERGERT	40.42%	
6	5	4	47.08%	JOHN BARDEN	46.25%	ARNIE WALTON	47.92%	
7	4	5	43.33%	CY SRENASKI	40.83%	ELAINE TROULLIER	45.83%	
8	2	7	36.46%	JIM LARSON	29.58%	JERRY WEIKERT	43.33%	
9	2	7	32.29%	HAROLD BROCKWAY	38.33%	RON BROCKWAY	26.25%	
1	8	1	43.54%	RUEBEN ECKARDT	36.67%	PAT SPAHN	50.42%	
2	7	2	42.08%	HARRY NELSON	44.58%	BILL HAGEN	39.58%	
3	6	3	39.58%	KEN JAEGER	40.83%	BRIAN REPINSKI	38.33%	
4	6	3	39.17%	PHYLLIS DAVIDS	41.67%	ROXANNE SELISSEN	36.67%	
5	4	5	35.21%	JERRY SCHROEDER SR	34.58%	JOHN CARLIN	35.83%	
6	4	5	31.88%	DICK HANSEN	27.92%	JIM HA UPT	35.83%	
7	4	5	30.42%	ROBERT ANDERSON	28.75%	HERMAN ADLER	32.08%	
8	3	6	31.25%	DAVE SCHORBAHN	42.92%	BILL SCHA AF	19.58%	
9	3	6	31.04%	RICK POPPE	51.25%	HEIDI STERNBERG	10.83%	
1	7	2	43.52%	GLENN BOGENSCHNEIDER	46.30%	LLOYD JOHNSON	40.74%	
2	7	2	34.17%	JOHN SECORD	34.67%	JEFF SECORD	33.67%	
3	7	2	31.85%	KEN KOSKY	28.52%	ED HACK	35.19%	
4	6	3	34.17%	GALEN KOZEL	25.83%	PAM AIKEN	42.50%	
5	6	3	28.54%	BRUCE MCLINN	30.00%	TERRY LOKKEN	27.08%	
6	5	4	33.54%	RON LINGARD	39.17%	JOHN GREGORICH	27.92%	
7	3	6	33.33%	KERRY MORRIS	37.08%	BILL SPAHN	29.58%	
8	3	6	27.92%	EARL PAULSON	32.08%	RUSS BURNS	23.75%	
9	1	8	22.50%	TERRY STERNBERG	21.67%	KEN DAVISON	23.33%	
1	7	2	26.48%	RICHARD MULLENBA CH	25.93%	RAY BILLENS	27.04%	
2	7	2	27.22%	TED ROHDE	34.44%	ROGER OLSON	20.00%	
3	6	3	30.21%	RICHARD CONRAD	31.67%	HAROLD LA WS	28.75%	
4	6	3	26.25%	DON BURMEISTER	24.17%	EMIL BLAIR	28.33%	
5	6	3	25.83%	HENRY ZEISSE	34.17%	RALPH ZEISSE	17.50%	
6	5	4	26.88%	GREG HEHLING	32.08%	JOHN MILLS	21.67%	
7	3	6	25.00%	CLIFF TROULLIER	37.92%	WALLY SRENASKI	12.08%	
8	3	6	23.54%	BERNARD COCKROFT	28.33%	MIKE EDDY	18.75%	
9	2	7	25.21%	RON BERG	21.67%	DAVE FORSETH	28.75%	
1	8	1	24.38%	GEORGE KUFFER	18.33%	DUANE GROSSEN	30.42%	
2	6	3	19.79%	LEO ZAMZOW	19.58%	DICK SCHOENER	20.00%	
3	6	3	19.17%	ROB PANKHURST	19.58%	TRACY PANKHURST	18.75%	
4	5.5	3.5	27.71%	ED KLA UCK	26.25%	STEVE KAMPPIENEN	29.17%	
5	5	4	21.67%	TOM HANSON	20.83%	GORDON LA CHANCE	22.50%	
6	5	4	20.63%	JOE ZORMSKIS	21.67%	JACK STATEMA	19.58%	
7	4	5	23.33%	ROWEN SWICK	21.67%	CARL SCHLIEM	25.00%	
8	2.5	6.5	18.75%	FRANCIS SCHALK	20.42%	TOM DUDENHOEFER	17.08%	
9	3	6	19.38%	WAYNE FRANZEN	17.50%	CHUCK HERMAN	21.25%	

THE RINGLE-SINGLE

WHEN YOU'RE READY TO MOVE UP IN CLASS
"WE'VE GOT YOUR SHOES"



The man enjoys his favorite beverage.

RINGLE-SINGLE - THE ONE HOOK SHOE

Fully approved and sanctioned by the National Horseshoe Pitchers Assn.

Available through your NHPA sales representative

Designed and developed by Gus Schram, R7239 Hy Q, Ringle, Wi 54471