

# WISCONSIN HORSESHOE NEWSLETTER

Volume 13, Issue 3

May 1999

AN AWARD WINNING PUBLICATION

Jim Haupt – Editor  
Ken Kosky – Publisher

## BORDER BATTLE 1999

### Inside this issue:

Coming Events	2
As the Shoe Turns	4
The Great Debate	4
Lorraine Sternberg NHPA Candidate	6
Down & Back	8
The Forseths	14

### Of Special Interest:

The WHPA Spring Meeting on page 9

The Story of Dorothy Gage on page 12.

### WISCONSIN vs MINNESOTA

By Jim Haupt

WI wins! 70 to 58 over a well represented MN team, of 16 pitchers, a few former World Champions included.

The teams met at the Arena Sandbar in Wisconsin. The home state also provided 16 of their best pitchers. They were further divided in two groups, short and full distance pitchers but competition for bragging rights was based on total wins of both groups as a unit. The Sandbar boasts eight indoor clay courts but suddenly it seemed only half enough. Games were played in sets of four alternating divisions.

After four games, despite Gert Wilczek's 82.5% and Clayton Gage's 90% games for WI, the MN 30's were two wins up. The WI 40's made up the difference in their first attempt with Randy Rein at 87.5% and Don Kangas at 85%. Dale Lipovsky, 3 time World Champ from MN, trying to stop the bleeding turned in his game of 85% but at halftime WI had a four game lead. The final four games for each division would put players head to head as seeded. The MN 30's took the courts for the third quarter and instantly dropped two more. Then in one game, taking seven of eight wins, they evened the battle. However, WI rallied turning the outcome over to their forty footers still two games up. The WI 40's won going away picking up eight games in the last two rounds overshadowing Dale Lipovsky's 90% finale game. Lipovsky tossed the high tournament average of 77.81% while Randy Rein of the WI team, was the

only pitcher to win all his games.

For the unofficial record, the MN short distance team did their job by a four game margin. Surprisingly the WI 40's outdid their MN counterparts by 16 games – 40 to 24.

It was an all day affair, about nine hours before awards were made by NHPA Sec-Treas., Dick Hansen. MN President and team representative, Dick Dvorak had the task of awarding the total entry money of \$800 to Randy Rein, WI team rep. in charge of player procurement for this event. Dvorak in his best presidential voice acknowledged the hospitality of Dave Forseth, owner of the Arena Sandbar, all the players and the Wisconsin organization. The trophy was presented by Ken Kosky, Publisher of The Wisconsin Horseshoe Newsletter. The Border-Battle plaque and minor expenses were sponsored by the Wisconsin Newsletter in order to free all entry money for pitcher's awards.

### BORDER BATTLE 1999

Randy Rein Don Kangas John Udelsch Neil Anderson	Gus Schran Jim Cook John Koepf Pete Brodway	Clayton Gage Gert Wilczek Felix Mayant Lorraine Sternberg	Edith McKinley Steve Truher Jane Smith Sue Huber
---	--	--	---

### TEAM CHAMPIONS

Courtesy of The Wisconsin Horseshoe Newsletter

This was the first of a series of annual Border-Battles between the two states if the directors have their way and the players cooperate.

See accompanying story on pg. 3

## WHPA OFFICERS

### PRESIDENT

Ken Jaeger Sr  
N3539 Knight Rd  
New London, WI 54961  
920-982-6287  
deershoe@aol.com

### SEC-TREAS

John Secord  
W6868 Brown Rd  
Fond du Lac, WI 54937  
920-922-0080  
whpa@execpc.com.

### 1ST VICE PRESIDENT

Jane Smith  
1481 180th Av  
Balsam Lake, WI 54810  
715-485-3057  
jmjmsmith@spacestar.net

### 2ND VICE PRESIDENT

Terry Sternberg  
W206 N13520 Woodside Ln  
Richfield, WI 53076  
414-677-3300  
horshoewi@aol.com

### HALL OF FAME

CHAIRLADY  
Edith McKinney  
2339 205th St  
Luck, WI 54853  
715-825-2149

### 3rd VICE-PRESIDENT

JR SCHOLARSHIP FUND  
Tom Steinke  
155 S Charles St  
Waukesha, WI 53186  
414-542-0252

## NHPA REGIONAL DIRECTORS

#### East

Jim Haupt  
5075 N Elkhart Av  
Milw, WI 53217  
414-964-2735  
jimhaupt@aol.com

#### West

Ron Berg  
5375 Blue Ridge  
Barneveld, WI 53507  
608-924-5574  
bfarms@mhtc.net

#### Nor-West

Dave Schorbahn  
Rt 2 526 Osseo Rd  
Independence, WI 54747  
715-985-3515

#### South

Earl Paulson  
7105 S Co Hwy H  
Beloit, WI 53511  
608-879-2304

### NHPA Jr Promotions Dir

Lorraine Sternberg  
W206 N13520 Woodside La  
Richfield, WI 53076  
414-677-3300  
horshoewi@aol.com

### NHPA Sec-Treas-

Richard Hansen  
3085 S 76th St  
Franksville, WI 53126  
414-835-9108  
nhpa.sec.treas@worldnet.att.com

## Coming Events

**MAY 1-2 ENCORE** Beloit Telfer Park \$20  
Earl Paulson 7105 So CTH - H, Beloit, WI 53511  
**608-879-2304 no limit #28-99-008 D/L 4-17**

**MAY 8 EAU CLAIRE EARLYBIRD** skpg ex .50/ga \$5  
Dennis Kieser 413 W Stanley St., Thorp, WI 54771  
**715-669-5272 28-99-012 D/L 4-30**

**MAY 8 MUSKEGO DOUBLES** \$20/team  
Tom Steinke 155 S Charles St Waukesha, WI 53186  
**414-542-0252 mixed unsanctioned D/L 5-2**

**MAY 13 DEADLINE** World Tournament Entry  
**MAY 14-15-16 TEAM-WORLD** \$200/team  
Earl Paulson 7105 S Co Hy H, Beloit, WI 53511  
**608-879-2304 28-99-009 D/L 4-10**

**MAY 22-23 ARCHIE'S CLASSIC** Kewaskum  
Jim Haupt 414-964-2735 \$15; at cts \$17  
5075 N Elkhart Ave., Milwaukee, WI 53217  
**Limit-120 partially mixed 28-99 013 D/L 5-8**

**MAY 29-30 PLATTEVILLE NHPA SINGLES** \$15  
Norm Mauthe 865 Eastman St Platteville, WI 53818  
**608-348-9697 28-99-014 D/L 5-14**

**JUN 5-6 WOLF RIVER OPEN**; New London \$13  
Ken Jaeger N3539 Knight Rd New London, WI 54961  
**920-982-6287 Limit 64 28-99-015 D/L 5-22**

**JUN 12-13 EAU CLAIRE OPEN** skpg extra \$15  
Dennis Kieser 413 W Stanley St., Thorp, WI 54771  
**715-669-5272 28-99-016 D/L 5-31**

**JUN 12-13 BELOIT SPRING SINGLES** incl skpg  
Earl Paulson \$20  
7105 S Co Hy H Beloit, WI 53511  
**608-879-2304 may be mixed 28-99-017 D/L 5-27**

**JUN 19-20 MUSKEGO OPEN** \$15  
Tom Steinke 155 S Charles St Waukesha, WI 53186  
**414-542-0252 28-99-018 D/L 6-5**

**JUN 19-20 MARSHFIELD ONE** \$15  
Randy Rein 201 Second St Mosinee, WI 54455  
**715-693-1199 may be mixed 28-99-019 D/L 6-6**

**JUN 25-27 GOLDENDALE**; Germantown skpg \$1/ga  
Terry Sternberg \$15  
W206N13520 Woodside Ln Richfield, WI 53076  
**414-677-3300 28-99-020 D/L 6/13**

**July 3 Wausau Open**; Ringle Limit 64 \$15  
Ken Kosky 6007 Municipal St Schofield, WI 54476  
**715-355-4628 May be mixed 28-98-021 D/L 6/20**



## WISCONSIN HORSESHOE Pitching Subdistributors

### GAME RELATED ITEMS

### Elaine & Cliff Troullier

3126 Wagon Wheel Road, Manitowoc, WI 54220  
(920) 682-3197

**KEY** Dates in bold print indicate WHPA approved events.

NHPA sanctioned tournaments also in bold numbers.  
Note: Some WHPA approved events are unsanctioned.  
Call, 414-964-2735 at least 6 wks. prior for free listing  
in this column.

# THE CHALLENGE

By Jim Haupt

## Building the WI-MN BORDER-BATTLE

It all started in Ainsworth, Nebraska. Dale Lipovsky idly made the remark that we ought to have a state on state tournament. Surrounding pitchers at the dinner table picked up on it. Exciting for the moment; few thought it would go.

We made the challenge, in the Wisconsin Horseshoe Newsletter (we do have MN subscribers) and online. MN President, Dick Dvorak responded. AOL was our vehicle. We worked out the time, place, format all online. Dvorak handled the MN players: Randy Rein handily recruited WI players. WI-MN central; <jimhaupt@aol.com><DIKADV@aol.com>.



Top: Gert Wilcziek, Ralph Maylahn, Sue Helene, Lorraine Sternberg, Clayton Gage, Ginger O'Brien, Phyllis Negaard, Harold Schrader, Len Lipovsky. Bottom: Jane Smith, Edi McKinney, Elaine Troullier, Edi Holland, Lu Cave, Mary Denzin, Bev Nathe.



Top: Ron Brockway, John Crook, Don Kangas, Gus Schram, Dale Lipovsky, Jerry LaBrosse, Ray Volkers, Will Korpela, Gerald Stangland. Bottom: John Koepp, John Udelhofen, Kent Anderson, Randy Rein, Dick Dvorak, Mark Bauman, Danny Carlson.

### The 30's

Bev Nathe	7	70.31	Clayton Gage	6	66.56
Len Lipovsky	7	69.69	Gert Wilcziek	7	67.81
Phyllis Negaard	7	67.81	Ralph Maylahn	3	52.50
Edi Holland	5	58.44	Lorr. Sternberg	3	54.38
Lu Cave	4	48.75	Edie McKinney	3	57.81
Mary Denzin	3	44.69	Elaine Troullier	2	51.88
Ginger O'Brien	1	43.44	Jane Smith	1	34.38
Harold Schrader	0	44.06	Sue Helene	5	60.63

Within the divisional competition Minnesota earned 34 wins in the 30' div. to Wisconsin's 30 wins. The Wisconsin 40' team scored 40 to Minnesota's 24. All games: WI 70 to MN 58

MINNESOTA	w	pct	WISCONSIN	w	pct
<b>The 40's</b>					
Mark Bauman	7	69.38	Randy Rein	8	75.31
Dale Lipovsky	7	77.81	Don Kangas	5	64.06
Ger. Stangland	2	53.75	John Udelhofen	6	68.75
Danny Carlson	4	60.31	Kent Anderson	6	63.75
Will Korpela	0	40.63	John Crook	2	43.13
Jerry LaBrosse	2	49.06	Gus Schram	5	41.88
Ray Volkers	1	48.13	John Koepp	5	49.69
Dick Dvorak	1	44.38	Ron Brockway	3	48.75



Jim Haupt checking a scoresheet with Minnesota's Bev Nathe

## AS THE SHOE TURNS

Concerning, "The Forgotten Man" (Last in "A") by Gus Schram

From John Udelhofen, always an "A" pitcher from Barneveld;

Received my Newsletter March 3. Very nice Newsletter as well. My guess is, that the article by Gus will open an interesting can of worms.

\*\*\*\*\*

From Eddie C Wheeler, a 31% pitcher from Lodi;

I would like to take my hat off to Mr. Gus Schram. The article that he wrote for the Newsletter kinda hits the nail right on the head. I thought his words were all thought out and presented in a very good format.

I agree wholeheartedly with the handicap system. They have been using the handicap system for years in the bowling leagues and you don't get any grief from those people.

I feel, for the interest of the Wisconsin Horseshoe Association, that we give this format a two year trial and see what kind of results we end up with. Granted, the higher average shooters are not going to like this format because they are not going to win as many games but where does the horseshoe association draw the line. Do we keep with the same system and risk losing members or do we try the handicap system and retain our current members with the possibility of adding many more new members?

This is only one person's opinion, but I think the idea of handicapping averages will help save the future of the horseshoe association as we know it.

You have my permission to reprint this if you choose to do so. Should Gus Schram have an E-mail address, I would appreciate a return E-mail with his E-mail address so I can forward this to him.

Thanks for letting me say my piece and for those of

you who do not like what I just said, all I ask is that you think about it the next time you have to throw someone with an average that is more than 15% above yours.

\*\*\*\*\*

From Dick and Paulette Hansen, the NHPA Sec/Treas and wife from Franksville, presently a 52% pitcher.

We both read it (Newsletter) cover to cover already and would like to make a comment. The story on the front cover is one of the best I have ever read on the 30 foot 40 foot subject. It is very well written and he makes a good point. It is also entertaining. There is no way I would have ever guessed who wrote it if his name was not on the heading. Way to go, Gus. I wish I could write that good. I would like permission to run it in the next Newslines. If Dave (Loucks, editor/publisher) likes it as much as I did he will want to, although Dave does not like to pitch handicap tournaments.

Gus makes such a good point that I am thinking about using a handicap of some kind in my tournament in August.

\*\*\*\*\*

From Ralph Maylahn a top pitcher from Genesee Depot;

I'm all in favor of Gus Schram's article in the March-April issue of The Newsletter. For some time I've advocated doing away with all prize money, charging \$5.00 entry, with the only prize in each class being a NHPA patch. Using the handicap system will/should encourage more entrants in weekend tournaments.

\*\*\*\*\*

From Lorraine Sternberg, top lady pitcher of Richfield

Now after reading the front page story, I now know why I stayed home all winter. I didn't have to listen to the whining. Handicapping isn't going to make any difference, as long as 30 ft pitchers are in the class they are going to whine. Lorraine

## The Great Debate

By John Udelhofen

Well everyone, we just completed the spring edition of our WHPA meetings. I think we all knew that the subject would come up about the letter Gus Schram had written in the Mar./Apr. Newsletter, and sure enough, it did. The floor was pretty much left open for discussion, allowing everyone to toss ideas

back and forth as to how to solve what is being perceived as an advantage that the 30 foot pitchers have over the 40 foot pitchers, and how this is starting to directly affect whether people enter a tournament or not. A few people asked me after the meeting, why I hadn't made any comments about this subject during the meeting. Kind of made me paranoid as to whether I talk too much, but not really. :)

Anyway, I felt that we were going down the wrong path as far as trying to solve this problem, and

*(Continued on page 5)*

## The Great Debate

*(Continued from page 4)*

therefore, I decided not to say anything at all and save it for this forum which I think will get to more people for any thoughts you may have regarding my ideas or the subject in general. Some ideas that were tossed around at the meeting were such things as handicapping tournaments and having alternate pitch. Well, I can't sit here, and know in my heart that I could take a great deal of pride in defeating someone knowing that not all things were equal or based upon the founding rules of our game, and so I don't see these ideas as fixes for the problems we're seeing. First of all, I'm willing to go on record as saying I agree with the part of Gus' letter that states that 30 footers do have some advantages over the 40 footers based on the math of the shorter distance and the ability of a shorter distance pitcher being able to keep iron around the peg and also the fact that their shoes tend to sit up more on the clay, creating more spring to each shoe that piles up on top of it. I personally think that if you put a short distance 50% and full distance 50% pitcher on the same court, you could expect the full distance pitcher to be at about a 1 or 2 lost ringers disadvantage per 40 shoe game. Just my opinion. Again, I agree there is some advantage, but not as significant as some people are thinking.

Okay, here goes. Going back 10, 15, 20 years, I could always tell you right off the top of my head what we had for tournaments on our state schedule. The reason for that was because the state list of tournaments always numbered in about the 15 - 20 tournaments per year range. Not anymore. At the spring meeting this year, the 1999 tournament schedule was announced to everyone and it was stated that we have 42 sanctioned tournaments on the schedule for this year, and that is not including the little on the side tournaments, league tournaments, and out of state tournaments. 42+ tournaments people, and I'll bet you could double that number with the other tournaments I've mentioned!! We now have so many tournaments to enter, that we are, in a lot of instances, only getting 30 -40 people for a tournament and therefore are not only seeing some huge average discrepancies in the classes, but it has become necessary to put the short distance and full distance pitchers together to even run the tournament. This is creating a situation where you have, say, a 70% pitcher up against a 50% pitcher. Well, we all know that the 70% pitcher is more than likely going to have first throw the majority of the time and therefore, has the shoes laying around the stake area causing the lower percentage pitchers shoes to fly around even more. Probably not

very enjoyable.

What has happened in an effort by the NHPA and WHPA to promote and grow the game of horse shoes, by giving people ample and easier opportunities to get involved, has taken an unforeseen turn for the worst. I would really like to know if other states are suffering from what the WHPA is starting to see as a problem. I'll bet they are, but no one is willing to take any action to address the problem, because it is a touchy subject. It is now as easy as a phone call to get a sanction number to hold a tournament, and people are doing just that so they don't have to drive anywhere to get in a tournament.

What I'm proposing is that we cut back the tournament schedule to something that would fit better with the number of members we have in the WHPA. I would actually like to see this taken a step further. I think that the NHPA should adopt a policy where they distribute a certain number of tournament sanction numbers to each state based upon the total number of members in each state's association (ex. If Wisconsin has 450 members, then they would receive, say, 20 sanction numbers; if Minnesota has maybe 700 members, then they would get something like 35 sanction numbers).

Now, I know some people are going to look at this and say, I'm not going to give up my tournament, etc. Well, I see your point and maybe a way of handling something like this would be that the NHPA gives the state these sanction numbers to divvy out to tournament directors. What could then be done is that the sanction numbers could be alternated every other year to different sites, as decided by the WHPA.

So, in ending, I firmly believe that, to not only close the average disparity, but also to get the short distance and full distance pitchers back into separate classes the way it is probably going to need to be in order to curb what seems to be a growing tension among pitchers, then we have to grow the size of our tournaments and decrease the number of tournaments back down to a number that is compatible with the number of pitchers we have.

Good pitching to all,

John Udelhofen

**Change is a law of life.  
And those who look only  
to the past or the present,  
are certain to miss the  
future.**

John F. Kennedy

## NHPA ELECTIONS

The following positions are up for election this year at the annual meeting of the NHPA during the World Tournament in July:

3rd Vice President (duties assumed to be the director of the sanctioned league program.) Announced candidates are:

- *Lorraine Sternberg*, Wisconsin, presently the NHPA Junior Promotions Director.
- Steve Summerlin, Michigan, presently the NHPA regional director for his state
- Donny Roberts, Ohio, the long time NHPA Sec/Treas who resigned a few years ago has also announced his candidacy for the position of 3rd Vice President.

*Sternberg, most apt to be the choice of the Wisconsin*

*delegates had her announcement in Newsline and is quoted in full below. For other bios consult the Horse-shoe Pitcher's magazine, Newsline.*

1st Vice President (Revised duties to be announced. May include publicity.) Announced candidates are:

- Billie Sue Pennington, recently of California now Florida, was editor of a former California newsletter, has recently been appointed the NHPA Publicity Promotion Director
- Allen Baptist, Colorado, is presently an NHPA Regional Director making his second attempt for this NHPA office.

5th Vice President, Chairman NHPA Regional Directors:

- Paul Stewart, North Carolina, has held this office for the past three years. He is unopposed as of this date.

### Lorraine Sternberg

Candidate for 3rd V.P. of NHPA

I wish to announce my candidacy for the position of NHPA 3rd Vice President.

I have been an NHPA member since 1986 and have been involved with the Sanctioned League Program for the past 23 years.

I have been Sanctioned League Director for the Goldendale Horseshoe Club for the past five years. I strongly support the Sanctioned League Program and feel it is one of the best ways to bring in new members.

For eight years I was the Junior Scholarship Director for the WHPA. I am currently the NHPA Jr. Program Director.

I have attended all but one of the World Tournaments since 1987. Horseshoes has been a family sport for us, as my husband and three daughters all pitch. As a family we have been very active in promoting the game of horseshoes.

I work part-time in my own business and feel I'd have the time it takes to do the work of the Sanctioned League Program. I would appreciate your vote at the 1999 convention.

*\*From Newsline, The National Horseshoe Pitchers Association magazine of Jan-Feb 1999. For complete NHPA coverage write Dick Hansen, NHPA Sec/Treas to subscribe.*

### STERNBERG-STERNBERG-STERNBERG

ALL-OVER THE 1998 TOP TEN PAGE

In five of the seven award categories considered by the NHPA sanctioned league program we saw the name Lorraine Sternberg. Her count-all point average ranked 9th in the nation at 116.5 with one game of 135 points. She had a high ringer game of 86%, sixth highest for Women. Her ringer average of 72.6% ranked 10th in the mixed distances and 5th in the Women's only division. Edie McKinney at 66.53% ranked 8th high in that same category.

The "High Ringer over Average" for both men and women is a category not frequented by high average pitchers rather it becomes the playground of those with room to improve. This year John Jashinsky of the Goldendale Club tossed a game 31.57 percentage points over his average - seventh highest in the nation.

Don't believe the overworked reference to sandbaggers category or that lucky game stuff - the lower the average; the greater the accomplishment. To put this in proper perspective, Jashinsky's accomplishment is akin to his launching the boat at daylight, catching five walleyes all over five pounds, and cranking that boat back on the trailer before breakfast.

## JANE SMITH

Sanctioned League Director of the Year

A reaction by Jane Smith

"What a pleasant surprise and a wonderful way to come home to a phone message from Bev Born stating my selection as Sanctioned League Director of the Year! It is truly an honor to be chosen from the many directors who give countless hours of time promoting, organizing, and mentoring smooth running horseshoe leagues.

Our own Close Doesn't Count League began in 1984 as a result of a World Tournament convention decision that required participation in a certain number of 'NHPA Sanctioned' tournaments to pitch in future World Tournaments. Our league was named 'Close Doesn't Count' because the ten lady original pitchers were from all parts of Polk County and we all know that close does NOT count in horseshoes! Our league grew over the years and we even allowed 'real men' to join our league!

Our club is small with about 25 very dedicated pitchers. We have just received our 15 year plaque and our Junior league received their ten year plaque. Horseshoe pitching is great activity in northern Wisconsin as there are many tavern and community leagues not affiliated with the NHPA., maybe in time.

Our school district is a leader, offering horseshoe pitching instruction in high school physical education classes. Our summer school program offers a three week program of horseshoe pitching for youngsters ages 9-14. Several of these summer school pitchers

We were scooped ! This article first appeared in Newsline, Jan-Feb '99. Other than our dismay at being one-upped, one more time, we find that all Jane Smith needs is her picture splashed on the page and a national award to start writing like no tomorrow. It's one more reason to get Newsline.

have joined the junior league and pitched in our local tournaments as well as venturing on to the State Tournament. Unfortunately as these students get older there are other 'more exciting' activities like softball, baseball, soccer, etc.. Hopefully these same pitchers will return to our sport sometime later in life. They may find, as I did, that eventually it 'gets too far between the bases!'

Though my husband Kirby supports horseshoes, he believes there is life beyond summer tournaments and league nights. In Wisconsin (October to March) there is life beyond horseshoes as the snow and cool temperatures make it difficult to play year-round.

Thanks to all of our league pitchers and junior league parents who have made my job a pleasure!"

## Publishers Notes

Those of you who subscribe to the NHPA's Newsline, may have noticed in the Charter Chatter section for Wisconsin, Mr. Champion mistakenly gave credit to our WHPA Officers for making "a great move" in giving a free copy of the Newsletter to all WHPA Members. That decision was actually made by the WHNL staff and not the WHPA Officers. Of course if they want the credit, I would be happy to send them a bill for the 200 additional newsletters we sent out free of charge.

Bob Champion is stepping down as NHPA Publicity Director. He deserves our thanks for many years of tireless service in promoting our sport of horseshoes.

### WISCONSIN HORSESHOE

#### NEWSLETTER

6007 Municipal St  
Schofield, WI 54476  
715-355-4628

PUBLISHER  
KEN KOSKY  
Kkosky@aol.com

EDITOR  
JIM HAUPT  
jimhaupt@aol.com

*Published 8 times annually @ \$8/year*

*Jan-Feb Mar-Apr May June July-Aug Sept Oct Nov-Dec*

**SEND CHECK TO: Address above**

## DOWN AND BACK

Note from Bill Spahn:

I'll be back in Lodi for my May issue, thanks.

A guy by the name of Gary Minnick asked me to say "Hi" to you. He's one of our main men here in Tucson. He threw an 86% game in our last tournament. When I grow up I want to be like him.

Editors note: Gary Minnick, my old boss, was 5th VP NHPA.

\*\*\*\*\*

Funniest thing said by a Minnesotan during the Sandbar tournament: "Is it OK if we have beer on the courts?" You know, come to think of it, maybe those gophers were completely out of their element.

In Wisconsin we have a lot of beer drinkers who pitch horseshoes and we have some horseshoe pitchers who drink beer. Most of the latter group belong to the NHPA but I sense a common thread there.

\*\*\*\*\*

It is my pleasure to introduce to the WHPA, Dick Staum new owner of the Arena Sandbar and his wife Rikky. Beginning April 1, 1999 they will be the active owner/managers of what has become the indoor headquarters of horseshoe in Wisconsin. It's not too early to extend your hand in continued friendship and appreciation.

\*\*\*\*\*

See the story in this issue, page 14, about how Arena goes dry to wet and into the export business in a quarter century. Our friend, Dave Forseth had a hand in it. Yes export, the sewer ejection system emanates near the west end of the Sandbar with long pipes recently laid towards Black Earth. When the disposal plant is complete, Arena will be in the export business.

Here's to Black Earth where the earth will be forever black.

\*\*\*\*\*

My Publisher, Ken Kosky went to Switzerland to see a few hockey games. Rick Poppe played for the USA team in the World Games for the Deaf. Referee's whistles are useless in those conditions. Flashing yellow lights stop the play. Also in the party were Rick's dad and mom, Ralph and Joyce Poppe, and the Sternberg girls, Heather and Heidi, Rick's fiancée. Sure they're twins but he's engaged just to Heidi.

Kosky said driving was a picnic probably because after spending a whole month practicing driving down the wrong side of the road in Ringle he found they use the same side as we do.

\*\*\*\*\*

Scorekeeping for the WI-MN Border Battle was the option of the host. We opted for the use of scorekeepers but used the Wisconsin method of ringers and points to mark both the sheet and the scoring device. All ringers showed up on the wheels. Single points under the magnets. Scorekeepers ignored the score column on their sheet. The emphasis was on wins, losses and ringers.

The Minnesota people took to it like smorgasbord. We may have exported the Wisconsin idea for easier score marking.

Filling chairs was no problem. People in attendance were knowledgeable pitchers, saw the need. It was impressive to see the likes of Dale Lipovsky, Bev Nathe marking but the real champs were Sonny Cockcroft & Carol Crook - all day long.

**FOUND**, after the RVR: at the arena Sandbar; A Kitchner coat, says "My job is the Pits" on back; Name, "Tom," embroidered on front. Wonder whose it could be? Would work for Toms - Endler, Costa, Steinke. For free private fitting (alterations extra) see Ron Berg.



**Chet's**  
CAR CARE

2020 Aberg Avenue  
Madison, Wisconsin 53704  
(608) 249-9887

**Chet Hermansen**  
Owner

Professional Auto Care for Domestic & Import Light Trucks & Automobiles



"Home of the 7-1/2 lb. Pizza"

**Frank & Barb's**  
COUNTRY INN

Downtown Le Roy

Featuring the Country Inn's Famous Pizza — Custom Built To Your Tastes!

- Sandwiches • Char Broiled Steaks
- Soups Daily • Friday Fish Fry

**FRANK & BARB DOHRWARDT** — Proprietors      Closed Tuesday  
(414) 387-3311 - Mayville      (414) 583-4534 - Oakfield      1-800-201-4534



## SPRING MEETING

Spring Meeting, March 20, 1999

Not the Minutes!!

For the minutes of the Spring Meeting minutes, attend the Fall Meeting. That which appears here is merely an unofficial account.

Scheduled for 1:00 PM, the meeting was called to order closer to 1:30 PM at the Arena Sandbar. Evidently the ongoing shoe tournament was taking a little longer than expected.

For starters President Ken Jaeger announced, for those unaware, that the Sandbar has been sold and present owner Dave Forseth took the floor. Forseth was short, saying thanks to the pitchers, the last few years were enjoyable and tossed it over to the new owner introduced as Dick Staum of nearby Sauk City. He and his wife Rikky will be the hands-on operators and are committed to continuing horseshoes. Don't think about wheels for the Hall of Fame, he kidded, and yes we are looking forward to the State Horseshoe Tournament here in the year 2000.

John Secord, State Secretary, read the real meeting minutes of last fall and declared the WHPA is in the black to the tune of \$6000.

VP Terry Sternberg asked for clubs considering the 2001 State Tournament to contact him even in the early stages of their bid. As always, Sternberg is interested in borrowing items of historical significance to display in a corner of the Hall of Fame cabinet. Contact Sternberg if you have or know of such items.

Tom Steinke, sitting at the head table for the first time as 3rd VP read the financial report of the Jr Scholarship Fund reporting a gross balance of \$11,500 with about \$6500 surplus. His plea was for more clubs to support the Fund at their tournaments.

Dick Hansen, NHPA Sec-Treas, spoke of the need to reserve lodgings for the World Tournament at Greenville, Ohio. Right now the immediate area is full and available space is 25-30 miles out. He expects a very large entry for the World this year. When questioned, Hansen said he felt three buildings and possibly the City Park will be used for pitching. The buildings will have the same type of air-conditioning as the outdoor courts in the Park.

Lorraine Sternberg, presently the NHPA Junior Promotion Director, asked for material on Junior participation that she might be able to include in her column in the national magazine, Newsline. She was introduced as a declared candidate this year for NHPA 3rd VP.

Jim Haupt, NHPA Regional Director cited a full schedule of 40 sanctioned tournaments again this year. Publicity events are somewhat productive, he said but real promotion is pitchers asking others to share the sport. One on one promotion will produce more members for the club.

On the subject of the Newsletter, Haupt said, the best thing that happened since fall was the addition of Ken Kosky as Publisher and partner. Kosky was also the printer/publisher for the new WHPA brochure and the new Bylaws booklet.

Without fanfare Edie McKinney announced that her Hall of Fame Committee had just selected Norm Mauthe of Platteville as the 1999 WHPA inductee. Mauthe was not in attendance to hear the applause. They apparently liked the selection.

Under "Old Business," Jaeger told of the progress made on the projected Hall of Fame sign to be erected along Highway 14 near the Sandbar. Jaeger, himself, is making the sign and is contracting with a former pitcher, Mike Wiegert of Wausau, to do the artwork. Cost estimate expected to be less than \$1200.

"New Business" began with a motion by Glenn Bogenschneider supported by Harry Nelson, to increase the award made to Junior State Champions through the Scholarship Fund. Supporters saw the large amount of money in the Fund as cash to spend while others, including Director Tom Steinke, considered the balance as working capital drawing \$560 annually in interest. The "Ayes" had it 24 to 13 and then the discussion overflowed. It seemed the cart had been placed in front of the horse - again.

E-mail update from President Ken Jaeger days later. Glenn Bogenschneider's motion on increasing the Jr. Scholarship award to \$400 for 1st, \$200 for 2nd, is ruled invalid because it would require a Bylaw change. It will have to stay at \$300 & \$150. Oops!

Gus Schram, the Ringle man, made an unsolicited offer. He will sponsor a trophy to be awarded to the high average pitchers of the year based on entering average for the State Tournament for each division. He envisions the piece of his own design as a keepsake any pitcher would be proud to own. His only stipulation is that it be awarded at the State Tournament by a qualified person in a dignified manner.

The meeting was winding down when Secord, or "Father John" as some would have it, said the dreaded word "Handicap." He said we ought to be able talk about it as a group. "It" has been a hot subject after the appearance of Gus Schram's entertaining article in this Newsletter last time. Given the

*(Continued on page 11)*

## NEWS FROM KENOSHA

### Kenosha's Annual Benefit Tournament

By Joe Zoromskis

The Kenosha Horseshoe Club held its annual benefit tournament on March 16-17, 1999. This year's recipients were the Woman's Horizons and the NHPF.

The Tournament Champion this year was Glenn Bogenschneider with a ringer percentage of 42.5% and a win loss record of 7/2. Second place went to Doug Bakkum with a record of 6.5/2.5. Third went to

Harry Nelson who also had the high ringer percentage of 46.3%. His record was 6/3. Lloyd Johnson finished fourth also with a 6/3 record.

Class B champion this year went to Everett Stewart with a record of 9/0 – way to go Everett. Second place to Joe Zoromskis with a 6/3 record. Third place and high ringer average went to Wally Nelson with 30%. Fourth place went to Greg Wickersheim with a 5.5/3.5 record.

A big thank you to all the pitchers who made this contribution to help these two worthy organizations.

### JR SCHOLARSHIP TOURNAMENT

By Tom Steinke

The tournament was very close and competitive. Class A, with only two games left, was anybody's tournament. Elaine Troullier pitched the most ringers and ended up champion. In class B, Tom Endler had a perfect day, not easy but all wins. Chuck Hansen couldn't get a break on pitching somebody at the right time unlike Bob Anderson, who didn't have his best tournament, but did get ringers when he needed them winning class C. In class D, Ed Klauk, after losing his first game to Michele Doorn, came back to win the class.

A	E Troullier 56.9;	G Weikert 56.3;	G Bogenschneider 50.9
B	Tom Endler 50;	Harold Brockway 49.4;	Cliff Troullier 48.8
C	Bob Anderson 33.1;	Earl Paulson 36.3;	Rich Conrad 35.3

It was a nice day but the event was overshadowed by Gus's

article that ran in the last issue of the Newsletter. The arguing started early in the morning and went on all day. I'm a little confused on what the real problem is. There were heated discussions about 30' pitchers, then about average difference, percentages, and handicaps, then back to 30' pitchers again. Personally I think we should talk about one problem at a time.

Regarding 30' pitchers, nobody worries about them until they become good, then it becomes a problem. There are a ton of answers on why they became good pitchers. There is no reason to be talking about distances on pitching. Believe me, Wisconsin will not be the state that makes 30' pitchers move to 40'.

The subject that has possibilities for change is the big average differences within a class. A possible solution to this problem would be splitting classes or handicap.

PS. Be careful. Suggestions are welcome but hard rules may make a shortage of tournament results.

### SEASON WRAP-UP AT ARENA

The Arena Spring Singles was the final event of the Sandbar season. John Crook, seemingly a one man show, condensed all six classes to a single day – tournament director's prerogative.

On appearance of the schedule and in light of recent talk, some pitchers expected class A to be handicapped. Ralph Maylahn was seeded on top with 74% while the rest of the class hovered between 60 and 50

percent. Mr. Crook did not handicap A but Mr. Maylahn did not walk through unscathed. Of all contenders, it was Mr. Ringle Single, Gus Schram the handi-man, who pricked Maylahn's balloon that one time.

A.	R Maylahn 64.2,	J Crook 55.8,	R Brockway 58.3
B.	R Power 44.6,	R Lingard 47.9,	T Wipperfurth 45.7
C.	T Endler 53.6,	Bill Spahn 36.1,	B Anderson 41.8
D.	R Groskinsky 38.6,	D Forseth 35.0,	J Gustafson 37.1
E.	D Stittleburg 39.3,	J O'Laughlin 31.8,	E Wheeler 31.1

## Spring Meeting

(Continued from page 9)

green light, one by one a dozen or so pitchers had their say. Edie McKinney is in favor of, "alternate pitch in all classes" and Big Bob Anderson figures, "We gotta handicap or something." Earl Paulson recognizes a problem in "A" that can be handled three ways, one would be to handicap, another is forming smaller classes, the third is the option to split A and pay in both brackets.

**Big Bob Anderson figures "We gotta handicap or something".**

Schram added, "You want to play as many people as possible." Tony Scrima feels that not enough mid-range A pitchers are entering regular tournaments. Tom Steinke fears the day of handicap tournaments when a thirty percent pitcher wants to pitch in A class. Jeff Secord stated that pitchers in the higher brackets often are playing for 3rd or 4th. He feels

competitive in all games now pitching at 38% and asks, "If can get back up to 55% does that mean because I improve, I'm going to get beat up?" Carl Gilbertson asked a provoking question, "Is it a disgrace to lose?" Ralph Maylahn considering a victory through handicap and said, "Where's the satisfaction?" Lorraine Sternberg thought it was a veiled complaint about 30 foot pitchers. A voice from the rear agreed in part uttering, "Ten feet is the greatest handicap in Horseshoe."

Before adjourning, President Ken Jaeger revealed this is his last year as President. "No hard feelings," he said, "Just won't be running in the fall.

**Progress always involves risk;  
You cannot steal second base  
and keep your foot on first.**

Frederick Wilcox

## KEN AMBLE SAVES SANDBAG TEAM

RVR, for short, refers to the River Valley Rumble by Ron Berg. It's a team event staged in the Wisconsin River Valley – team doubles to be specific. A team is four pitchers or two pairs. The event requires each team to play each other team two times. Pairs remain intact, With a full house limit of eight teams it means 14 games – a long day even when the shoe count is limited to 20 shoes per man. A percentage cap of 180 produces a competitive field including all levels.

Berg designed an 8:30 AM start. He showed up on time but in tough shape, unable to pitch but was able to obtain a last minute sub and launch the af-

fair. Karen Decorah was on-hand to do the statistics as arranged.

So, who needed the tournament director? Berg recruited Ken Amble of Arena returned to Barneveld and his team prevailed without his services.

John Udelhofen, 65.3 & Ken Amble, 25.7, coupled with Eddie Wheeler, 25.4, & Ron Lingard, 46.4 took top honors. But first they had to duke it out with Hi Chaffin, 29.6, Bob Power, 36.8, Jeff Gustafson, 35.7, and Tommy Endler, 51.1.

Admittedly, ringers were scarce. All teams should have averaged in the 40's. Only the top team managed the touch the 40% mark. The rest settled for somewhere in the 30's.

## A FRIEND WE'LL MISS

### Camille Pritzlaff

Camille Pritzlaff, 31 of Racine passed away March 21, 1999. She is the wife of Rick Pritzlaff, WHPA Hall of Fame pitcher who became State Champion in 1977 and known by many as he went on to serve nine years as WHPA President.

Camille is mother to two girls, Mandy and Saman-

tha and stepmother of Brad and Jenna. She is the daughter of Richard and Carol Wurtinger, She has five brothers and two sisters. Daughter-in-law of Ron and Susie Pritzlaff. Sister-in-law of Randy (Wendy), Rusty (Laurie), Bret (Margo), and Granddaughter-in-law to Florence Wing, proprietor of the Lone Star Tavern and home of the Goldendale Horseshoe Club.

## Norm Mauthe Elected to the Hall of Fame

Recently announced as the 1999 selection for the WHPA Hall of Fame is the man who put Platteville, WI on the horseshoe tournament map, Norm Mauthe.

He was there in 1981 when the Platteville Horseshoe Association was organized and became everlasting tournament director beginning with the first Platteville Open in 1984. He also inaugurated the Platteville Spring Singles in 1991.

In '84 the Platteville area was

still the wild west. Mauthe had been pitching at the Bennett family courts in Leadmine since the 60's but the closest Wisconsin tournament was 90 miles. The twofold result was Mauthe's participation in many Iowa events and the establishment of the original Platteville Open.

Mauthe has a lifetime high tournament game of 85% and high tournament average of 65.8% to his credit, however, his dedication to the Platteville Horseshoe Asso-

ciation remains paramount

Without regard for his own accomplishments, Mauthe lobbied for recognition of the lasting sponsorship of the Platteville tournaments by "Country Kitchen of Platteville." The WHPA accepted his recommendation to make a suitable award to the tournament sponsor and followed up the next year selecting the Tournament director, Norm Mauthe as the newest Hall of Fame inductee.

## DOROTHY GAGE - A SUCCESS STORY

In the 1930's and 40's, before polio vaccine, many young people contracted poliomyelitis know as infantile paralysis, for short, polio. Dorothy Holmgren was one of those teenagers.

Dorothy was born on a farm between Balsam Lake and Milltown in 1924, a picture of health, to Carl and Anna Holmgren. She had two older brothers, two older sisters and a younger brother. They walked to Pine Grove Country school and Dorothy was as active as any child could be.

Dorothy was an active teenager in high school, played the saxophone in the band, was in the glee club, on the annual staff as well as the school paper. She was also a vibrant cheerleader for the home team.

Then when she was 17 and a senior in high school, she began feeling ill. It began with a sore throat, headache and backache.

Her special friend, Clayton Gage, who was already out of school, gave her an engagement ring on September 28th. The next day when the doctor came to call, her case was diagnosed as the dreaded disease polio.

After two weeks in bed it was decided that Dorothy should go to the state hospital in Madison. Dorothy recalls that the hospital was like a prison to her, "I just stayed in bed and couldn't walk or get around." The hospital was ell shaped with the girl's dorm on the left and the boy's on the right. Each room had six

beds. Another girl who was in Dorothy's room and became her good friend was Dorothy Akin of St Croix Falls.

That same year, Pearl Harbor was bombed, the United States entered the war and Clayton joined the navy. Before leaving he came to the hospital to visit Dorothy and the supervisor wasn't going to let him in but he said he had come this far and he was going to see her, so he did.

Dorothy caught up with her school work while in the hospital and received many cards and letters from her classmates. At Christmastime the classmates sent gifts and it took me a long time to open them all, she said, "and I still have some of them." Some items were hankies and things to embroider. "My older sister wrote a couple times a week which really helped."

After being so active and full of life, it was a difficult change for Dorothy to be confined to a bed. "I tried not to get depressed," she said.

The first six months in the hospital, Dorothy was in a lot of pain as there was not much help for polio victims. They had heard about Sister Kenny Institute in Minneapolis and her method of using hot damp towels on the aching limbs.

Dorothy described it, "They put scalding hot water in an old wringer washing machine, put in the woolen towels, run them through the wringer, and placed them on our aching limbs. Sometimes I was burned,"

*(Continued on page 13)*

## Dorothy

(Continued from page 12)

she said, "but it helped to stretch the muscles so we didn't have pain." This treatment was given the last six months in the hospital.

During this time there was rationing of gas, so visitors were few from her home area. It wasn't easy for her parents to pick up and drive down. She just relied on mail for her source of encouragement.

When her classmates graduated from Milltown High School, Dorothy was still in the hospital, however the principal, O.T. Premo, paid her a visit to present her diploma and the high school yearbook. To Dorothy's amazement, it was dedicated to her with her picture on the front page. It read, *"To Dorothy Ann Holmgren, our beloved classmate who is waging a determined fight against infantile paralysis. We the senior class of 1942 so dedicate this annual. May we in our coming encounter with life take inspiration from her exhibition of courage, and may she too gain from being our classmate. With this dedication goes our sincere hope for an early and complete recovery."*

It was almost one year of hospitalization before Dorothy was released to return home in September of 1942. Clayton was on a ship and writing letters to her. Shortly thereafter her family moved to St Paul. While there Dorothy was fitted for leg braces which cost \$100 ( would cost \$5000 now). Prior to that she would walk with canes which had wristlets attached but she could only walk with supervision. Crutches became part of her life and she learned to get around very well with them.

In St Paul she attended Minnesota Business College and after graduation took a job as secretary bookkeeper at a plumbing company. The highlight of her time in the Twin Cities was when Dorothy went to visit Sister Kenny. "She told me that I was such a pretty young lady that I shouldn't let polio get in my way."

When the war was over, Clayton came home on leave. They were married October 15, 1945. Clayton took a job with the Farmers Union in St Paul and Dorothy continued with her secretary job until her duties as a mother kept her at home.

Their first born was a son, Norman who has been a sixth grade teacher for thirty years and was just voted "Teacher of the Year" in Minnesota. He and his wife, Cristine have three daughters, April, Heather, and Tiffany. April teaches school next to her dad, in the same school.

Dorothy and Clayton's second child, Roberta was killed in a car accident in 1969 at the age of 18. Through all the tragedies and setbacks in life,

Dorothy continues to keep a cheerful attitude and good outlook on life. She has had diabetes for almost 50 years, had open heart surgery, besides 32 other operations.

**She has had diabetes for almost 50 years, had open heart surgery, besides 32 other operations.**

Throughout her years she was able to do her own work around the house and care for her babies. "I had to learn to hold babies with one arm while hanging on to something with the other." She drove a car for

many years, belonged to a singing group and worked at the theater in St Paul for 13 years. The fastest way for her to get around was on crutches. The wheelchair and braces were too awkward. It was only a couple of years ago that she stopped driving. Her eyesight was impaired and she became blind in her left eye.

"I consider myself very lucky" Dorothy says, I've lived through many difficult situations but I still have my husband, my son, grandchildren and two great-grandchildren as well, Autumn Buschinski and Kelly Wegner. Dorothy also wears oxygen much of the time to help her breathing.

Children growing up today are blessed to have polio vaccine discovered in 1955 by Dr Salk through the March of Dimes. Dorothy said she made sure her children were vaccinated.

Dorothy and her husband, Clayton returned to the Milltown area after retirement making their home in a new house on Clayton's home place.

*Originally published by the ENTERPRISE PRESS March 18, 1999; author Marie Dissmore. Titled "A success story: Living life with a rare disease." Reproduced here in part.*

### TWO MADISON AREA PITCHERS DOWN

John Aeschlimann of Black Earth is reported to be fighting Lou Gehrig's disease and was seen just as a visitor at the Arena courts.

John Barden, Waunakee, is believed to be fighting a reoccurrence of bone cancer that has necessitated the amputation of a leg in an attempt to arrest the condition. Barden is presently recuperating at home.

To be updated when more information is available.

John Aeschlimann  
10213 Bell Rd  
Black Earth, WI 53515

John Barden  
202 Eight St  
Waunakee, WI 53597

## A guy named Dave and a gal name of Gail

Dave Forseth will not be seen as often at the Sandbar as he transfers ownership this month. Few horseshoe pitchers know that he and Gail have been in the bar business a long time and are probably ready for some diversion.

Twenty-three years ago the local gas-garage guy at Arena, a guy named Dave, with lofty ambitions figured there was no point in having an all night gas station on a highway with no traffic. He had all the cars in town running, pretty good. More farmers had learned to weld or haywire their own machines. Travelers with the big tanks were stopping to buy a little gas and use the restrooms. "Let's get more people in those restrooms," became the aim. The challenge was how to keep the small customer base interested in staying a while..., entertained as it were. A little light bulb blinked. It was only a vision but in a mill-second it appeared. The "GAS" sign changed to "BEER." And then we can take the lock off the restroom doors, have inside entrances, and everything.

So one day in 1976 he pulled in the signs, closed the big overhead doors and let the lifts down for the last time. Next day they called the Madison brewery and put a new liquid in the tanks. They switched from high test to top shelf. Prices

changed from by the gallon to the ounce. The same customers stopped by to get tanked up, it just took a little longer this way. And now the proprietor had to be concerned about the year on his customers' driver's license and how to keep it.

That's how in 1976 that the town of Arena, WI went from dry to wet and a gal named Gail went from pumping gas to tapping suds while fan belts still hung from the walls. The customers, most of them, felt better too..., eventually.

Bars operate mostly after dark, It gives a guy plenty of daylight to get into more stuff. Somewhere along the line the Sandbar Canoe business came into being - something to do on Sundays if you don't play golf. That explains the big canoe trailers and the school bus parked near what became the house for the WHPA Hall of Fame.

"I like horseshoes  
and know how to  
sell beer."

...We thought it was an old chicken coop but have since heard that this Dave guy was running a beef operation out of that building when it came to him, "I like horseshoes and know how to sell beer." Gail was running the bar in town.

He went to work, doing most of it himself, and presto! Sandbar Sport Center - horseshoe place, a place to have some big time entertainment, can park a lot of cars here. That was 1990.

The girl, Gail, closed the bar in town but not until three years later. Then the Sandbar began to run smoothly. The farm? That's just something you're born with, a few extra chores to do. The empty acres surrounding the Sandbar seemed just too empty. Better to turn that land into housing, lay some water-main, install city type sewer, build houses. Now we're going. Sure is fun to be in debt again.

Dave is still thinking. After 23 years this bar business is getting stale, keeps a guy out too late. Business is so good we can't close the place until early morning and when there's things to do you can't sleep in all day.

Dave, what's to do you when you sell the place? April first you retire. Hey, maybe you could play golf during the week and do canoes on Sunday. Golf? Fat chance. Stay tuned for the next venture.

Pub. Note: We hear that golf is Gail's passion and she will be seen on the links regularly this summer.

## THANK YOU

### A Note from a Friend

Dear Friends,

Thank you so much for your Jan-Feb Wisconsin Horseshoe Newsletter. I was surprised and pleased when I read the three page article on Ralph. Horseshoes was

our life for sixty years. I enjoyed tagging along to the many tournaments although I never pitched.

Horseshoe people are very friendly. I miss my Ralph. I am very comfortable here in Florida with our daughter and son-in-law. I am glad we made the move in

1997. It would be very difficult to do now.

Thanks again and good pitching.

Sincerely,  
Delores Dykes

# ARCHIE'S CLASSIC

May 22-23, 1999  
In Kewaskum, a really nice place for a HORSE-SHOE TOURNAMENT

This event is NHPA Sanctioned #28-99-013 so cards are necessary. We'll have classes for all levels and divisions. Classes will be separated by division if a competitive class can be found among the entries. Otherwise classes will be mixed to best serve a competitive schedule.

Handicapping at about 80% will be utilized for classes that differ by 15% or more, top to bottom.

Entry fee is \$15 Deadline for entry is two weeks prior or May 8th. We try to avoid the task of collecting fees while running the event and ask for prior payment. Fee, if paid at the courts, is \$17.

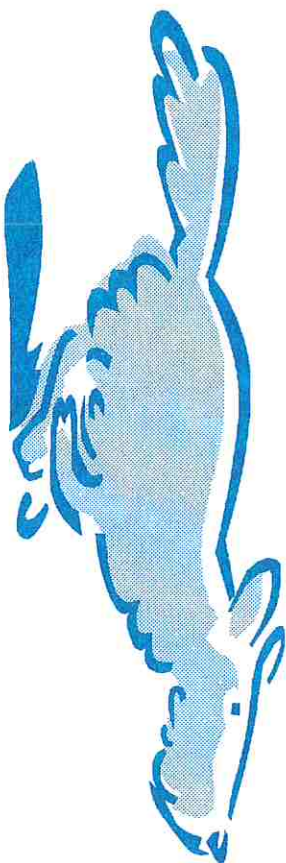
All expenses will total no more than \$2 per pitcher. The balance, or \$13 remains in each class as available award money. That's a return of more than 85%. And this year we plan to pay more places. The high return is partly because we will use the same self scoring method we introduced at these courts last year.

So how about entering Archie's this year? We really appreciate your participation and the folks of the Kewaskum Club who will be serving concessions would like to see you too.

Thanks, Jim Haupt

For quick entry send a check made out to me to:  
5075 N Elkhart Av Milwaukee, WI 533217  
Come see the beautiful courts of Kewaskum.

# WOLF RIVER OPEN



NEW LONDON, WOLF RIVER OPEN SINGLES TOURNAMENT

JUNE 5-6, 1999 NHPA SANCTIONED 28-99-015

HATTEN PARK, NEW LONDON

Entry deadline 5-22-99 Limited to 64 entries - 40 shoe games  
CLASSES: Men and Women 30 & 40 ft. players may be mixed.

Entry fee \$13 - no extra fee at courts

Junior class if interest shown. Jr. Free Entry, trophy only.  
PAYOUT: 100% less expenses each class-award to 1/2 class

**SHOW UP 1/2 HOUR EARLY**

ADDITIONAL DONATED MONEY;

\$75 - 1st Class A Men; \$50 - 1st Class A Women;

\$50 - 1st Class B

LIMITED TO 64 ENTRIES

Name \_\_\_\_\_ NHPA card # \_\_\_\_\_

Address \_\_\_\_\_

City, State, Zip \_\_\_\_\_

Mail Entries to:

Ken Jaeger

N3539 Knight Rd

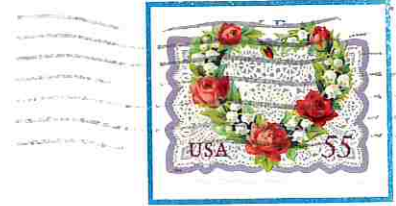
New London, WI 54961

1-920-982-6287

Wisconsin Horseshoe Newsletter

6007 Municipal Street  
Schofield, WI 54476-4294

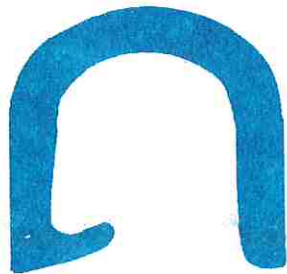
Mailed by: K&S Fuel Injection, Inc



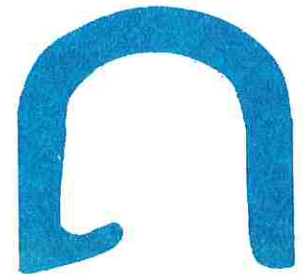
RETURN SERVICE REQUESTED

Jim Haupt  
5075 N. EIKhart Ave  
Milwaukee, WI 53217

*Watch the renewal date on your address label: DON'T let your subscription run out.*



## THE LONE JUNIOR



After a long meeting, by the Board of Directors of the Ringle Single Horseshoe Company, the decision was made to attempt to write something in this ad space that could promote horseshoes.

Adult players who enter their first tournament are assured that they will play in a full 8 person class and be evenly matched by average. This does not hold true with our Juniors. A Junior, when entering his first tournament, may face large average spreads or double round robins. It appears we are giving our Juniors' Scholarships and Trophies, but we are not giving them a place to start pitching or a game to play if they do.

Horseshoes is a game that can be played by the young or the old, so we can't discriminate against either one. If our Juniors were mixed into our adult classes in our tournaments, friendships may develop and some of our Juniors may come back and play with us after they leave the nest.

Juniors cannot win money, but the money could be put in the Junior Scholarship Fund. Let them earn their keep. I would like to see some comments and viewpoints from our present and past juniors published in this newsletter.

Horseshoes should never run out of Juniors because people make them every day.

The Ringle Single  
Gus Schram

P.S. If things were done along these lines, someday Juniors might play in our Junior Scholarship Tournament.

Fully approved and sanctioned by the National  
Horseshoe Pitchers Assn.

Available through your NHPA sales representative

Designed and developed by Gus Schram,  
R7329 Hwy Q, Ringle, WI 54471

