

❖ WISCONSIN HORSESHOE NEWSLETTER ❖

AN AWARD WINNING PUBLICATION

CIRR. 401

MARCH-APRIL 1998

THE 1998 OFFICIAL WHPA OUTDOOR SCHEDULE OF TOURNAMENTS

MAY 9 EAU CLAIRE EARLYBIRD skpg ex .50/ga \$5 Randy Hansen 2536 Hillcrest Pky Altoona, WI 54720 715-832-5095 28-97-011 D/L 4-30	AUG 8-9 SOUTHERN WIS OPEN; Beloit incl skpng \$18 Earl Paulson 7105 So Co Hy H Beloit, WI 53511 608-879-2304 Limit 144 28-97-024 may be mixed D/L 7-15
MAY 9 MUSKEGO DOUBLES \$20/team Tom Steinke 155 S Charles St Waukesha, WI 53186 414-542-0252 mixed <u>unsanctioned</u> D/L 5-2	AUG 15- NORTHERN RINGER CLASSIC; 28-97-026 \$15 AUG 16 ASHLAND DOUBLES 28-97-027 Fairgrds \$15/team Steve Stevens Rt 1 Bx 132 Marengo, WI 54855 715-278-3473 Singles; not mixed; Doubles-OK if mixed D/L 8-2
MAY 17 OXFORD OPEN Singles Oxford VFW \$10 Francis Schalk 135 Edgewood Dr Oxford, WI 53952 608-584-5264 Limit 48 28-98-012 D/L 5-3	AUG 22-23 PLATTEVILLE OPEN \$15(A\$16) Norm Mauthe 865 Eastman St Platteville, WI 53818 608-348-9697 28-97-025 D/L 8-7
MAY 16-17-18 TEAM-WORLD \$200/team Earl Paulson 7105 S Co Hy H Beloit, WI 53511 608-879-2304 28-97-009 D/L 4-15	AUG 29-30 NHPF BENEFIT; Fieldhouse, Caledonia \$20 Dick Hansen 3085 S 76th St Franksville, WI 53126 414-835-9108 28-98-028 D/L 8-17
MAY 23*24 PLATTEVILLE NHPA SINGLES \$15 Norm Mauthe 865 Eastman St Platteville, WI 53818 608-348-9697 28-97-013 D/L 5-8	SEPT 5-6-7 STATE TOURNAMENT; Eau Claire \$ John Secord W6868 Brown Rd Fond du Lac WI 54937 414-922-0080 28-97-029 D/L 7-31
MAY 30-31 ARCHIE'S CLASSIC in Kewaskum \$15 at cts \$17 Jim Haupt 5075 N Elkhart Av Milwaukee, WI 53217 414-964-2735 Limit-120 partially mixed 28-98-014 D/L 5-17	SEPT 11-12-13 V.F.W. Doubles; Comb Locks \$25/team Don Navarrete 534 Woodlawn Ct Combined Locks, WI 54113 414-788-1633 or 788-4379 <u>unsanctioned</u> D / L 9 - 4
JUN 6-7 WOLF RIVER OPEN ; New London \$13 Ken Jaeger N3539 Knight Rd New London, WI 54961 920-982-6287 Limit 80 28-97-015 D/L 5-23	SEPT 12-13 WET 'N WILD; Centuria \$10 Jane Smith 1481 180 Av Balsam Lake. WI 54810 715-485-3057 28-97 030 D/L 8-30
JUN 13-14 EAU CLAIRE OPEN skpg ex .50/ga \$15 Randy Hansen 2536 Hillcrest Pky Altoona. WI 54720 715-832-5095 28-97-016 D/L 5-31	SEPT 12-13 KENOSHA OPEN \$15 Glenn Bogenschneider 3109 89th St Kenosha, WI 53142 414-694-692 Limit 1st 32 entries 28-97-031 D/L 9-5
JUN 13-14 BELOIT SPRING SINGLES incl skpg \$17 Earl Paulson 7105 S Co Hy H Beloit, WI 53511 608-879-2304 may be mixed 28-97-017 D/L 6-1	SEPT 19 BELOIT DOUBLES \$10/TEAM Earl Paulson 7105 So Co Hy H Beloit, WI 53511 608-879-2304 limit 110% <u>unsanctioned</u> D/L 9-10
JUN 20-21 MUSKEGO OPEN \$15 Tom Steinke 155 S Charles St Waukesha, WI 53186 414-542-0252 28-97-018 D/L 6-7	THIS SPACE RESERVED FOR THE PUBLICATION OF THE FOND DU LAC TOURNAMENT ANNOUNCEMENT WHEN AND IF IT OCCURS THIS SEASON.
JUN 20-21 MARSHFIELD ONE \$15 Randy Rein 201 Second St Mosinee, WI 54455 715-693-1199 may be mixed 28-97-019 D/L 6-6	
JUN 26>28 GOLDENDALE; Germantown skpg \$1/ga ex \$15 Terry Sternberg W206N13520 Woodside Rehfield, WI 53076 414-677-3300 28-97-020 D/L614	
JULY 3 "911" OPEN; Mountain 28-97-022 \$16	
JULY 4 RESCUE <u>unsanctioned limited</u> \$14 Debbie Trossen 14840 Deer Run Trail Mountain, WI 54149 715-276-6041 Both events will be mixed D/L6-20	
JULY4-5 WAUSAU OPEN; Ringle \$15 Ken Kosky 6007 Municipal Dr Schofield, WI 54476 715-355-4628 28-97-021 D/L 6-27	
JULY 10>12 MID-EAST OPEN; Comb. Locks \$13; at cts \$15 Rosemary Kamps 101 Kamps Ct Combined Locks, WI 54113 414-788-3229 <u>unsanctioned</u> D/L 6-27	
JUL 20-AUG 1 WORLD TOURNAMENT Ainsworth, NB Dick Hansen 3085 S 76th St Franksville, WI 53027 414-835-9108 entry forms now available D/L5-7	
AUG 8-9 MOUNTAIN OPEN \$15 Debbie Trossen 14840 Deer Run Trail Mountain, WI 54149 715-276-6041 Limit 180 <u>unsanctioned</u> D/L 7-20	

WHPA SCHEDULE SPONSORED BY

WISCONSIN HORSESHOE NEWSLETTER
W204 N11912 GOLDENDALE ROAD
GERMANTOWN, WISCONSIN 53022
414-628-1484

Editor/Publisher
Susie Pritzlaff

Staff/Writer

Jim Haupt
jimhaupt@aol.com

An independent venture wholly funded by subscribers
and advertisers. Rates upon request
Published 8 times annually available for \$8/year

Numbers in bold print are NHPA sanction numbers. Entry fees shown are due with entry and may or may not include scorekeeping. All events are "pre-register" with a deadline date abbreviated - D/L. Directors may accept later entries but should not be expected to return fees once the schedule is published.

WHPA OFFICERS**PRESIDENT**

Ken Jaeger Sr
N3539 Knight Rd
New London, WI 54961
920-982-6287

SEC-TREAS

John Secord
W6868 Brown Rd
Fond du Lac, WI 54937
920-922-0080
whpa@execpc.com.

1ST VICE PRESIDENT

Jane Smith
1481 180th Av
Balsam Lake, WI 54810
715-485-3057
jmjsmith@bucky.win.bright.net

2ND VICE PRESIDENT

Terry Sternberg
W206 N13520 Woodside La
Richfield, WI 53076
414-677-3300

HALL OF FAME

Edith McKinney
2339 205th St
Luck, WI 54853
715-825-2149

JR SCHOLARSHIP FUND

Tom Steinke
155 S Charles St
Waukesha, WI 53186
414-542-0252

NHPA REGIONAL DIRECTORSEast

Jim Haupt
5075 N Elkhart Av
Milw, WI 53217
414-964-2735
jimhaupt@aol.com

West

Ron Berg
5375 Blue Ridge
Barneveld, WI 53507
608-924-5574
bfarms@mhtc.net

Nor-West

Dave Schorbahn
Rt 2 526 Osseo Rd
Independence, WI 54747
715-985-3515

South

Earl Paulson
7105 S Co Hwy H
Beloit, WI 53511
608-879-2304

NHPA Jr Promotions Dir

Lorraine Sternberg
W206N13520 Woodside
Richfield, WI 53076
414-677-3300

NHPA Sec-Treas

Richard Hansen
3085 S 76th St
Franksville, WI 53126
414-835-9108
nhpa.sec.treas@worldnet.att.com

THE CORRECTION CORNER

(A regular feature of the Newsletter)

Ken Frame of Mazomanie was incorrectly listed in the ranking of year end averages. His correct average is 36.83.

Frame went on to prove the point by moving up two classes and then winning that class. See the results column for the January 0-1 Singles at Arena.

INVITATION**WHPA SPRING MEETING**

THE ARENA SANDBAR
SATURDAY MARCH 21, 1998
12:00 NOON

calendar of events

MAR 21-22 JR SCHOLARSHIP \$17
Tom Steinke 155 S Charles St Waukesha, WI 53186
414-542-0252 #28-98-003 D/L 2-28

MAR 21 WHPA SPRING MEETING at the Arena Sandbar
Meeting time **12 NOON** all members are urged to attend

APR 4-5 ARENA SPRING SINGLES \$15
John Crook 6225 Hy Co TZ Spring Green, WI 53588
608-588-7392 #28-98-005 D/L 3-21

APR 25 CLUB TEAM; Beloit \$48/team with entry - \$55 at cts
Jim Haupt 5075 N Elkhart Av Milwaukee, WI 53217
414-964-2735 28-98-006 D/L 4-11

APR 26 WHPA STATE DOUBLES at Beloit \$40/team
John Secord W6868 Brown Rd Fond du Lac, WI 54937
414-922-0080 limit- one player over 60% #28-98-007 D/L 3-31

MAY 1-2 BELOIT ENCORE \$18
Earl Paulson 7105 S Co Hy H Beloit, WI 53511
608-879-2304 #28-98-008 D/L 4-18

MAY 15-16-17 TEAM-WORLD \$200/team
Earl Paulson 7105 So Co Hy H Beloit, WI 53511
608-879-2304 #28-98-009 D/L 4-15

10 H.O.F. NOMINEES 2 HONORARY

Edi McKinney and her Hall of Fame Committee have these names on the ballot as they perpare for the 1998 selection. John Reitveld, Combined Locks, LeRoy Wipperfurth, Waunakee; Wes Taylor, West Bend; Norm Mauthe, Platteville; Clayton Gage, Milltown; Gus Schram, Ringle; Randy Rein, Mossinee; Sid Anderson, Evansville; John Udelhofen, Barneveld; and Dick Hansen, Franksville. For Honorary consideration: Sandy Secord, Fond du Lac, and Paulette Hansen, Franksville.

WORLD TOURNAMENT ENTRY FORMS

(entries accepted only on form)

NHPA Sec-Treas, Dick Hansen has entry forms ready for the World Tournament. Copies may be available at forthcoming tournaments. NEWSLINE will publish the form in the March-April issue. Otherwise available through the mail from Hansen. **Deadline for entry is May 7th.** Natstats percentages will be finalized as of May 21st regardless of entry date. New for 1998: More class prize money and more places paid. Also new; is the entry fee: Adults - \$75, Juniors \$15.

WISCONSIN HORSESHOE NEWSLETTER

W204 N11912 Goldendale Rd
Germantown, WI 53022
414-628-1484

EDITOR/PUBLISHER
SUSIE PRITZLAFF

STAFF/WRITER
JIM HAUPT
jimhaupt@aol.com

ARENA 01 SINGLES

by Jim Haupt

Sanc. number: 28(Wis)-98(year)-001(first of the season)

A1 Clayton Gage 80.3; Ralph Maylahn 69.3; Lorain Sternberg 69.0

A2 John Crook 55.0; Arnie Walton 58.5; Gus Schram 49.3

B Ken Heinritz 50.9; Dick Hansen 54.8; Tony Scrima 53.4

C Ken Jaeger 46.1; John Carlin 41.8; Tedn Rohde 44.6

D Terry Sternberg 41.2; Lavern Edge 38.0; Jay Fischer 36.8

E Earl Paulson 42.0; Julian Tijerina 37.6; Chuck Hansen 36.0

F Ken Frame 40.0; John Secord 40.7; Orville Baker 30.0

G Ray Groskinsky 40.8; Ken Davison 32.9; Len Mauthe 33.7

H Ray Lopez 25.2; Chuck Herman 28.4; Tom Hanson 25.6

Clayton Gage circles the stake more than most guys miss! Note, Dick Hansen seems to be a serious contender again. Ken Heinritz, Menomonee Falls, broke 50 for his first Arena win. Chuck Hansen, of the infamous Franksville Hansen team, entered with a "kitchen table percentage" had high game in class of 54%, says he's pointing for an appearance at the State in Eau Claire. Ray Groskinsky of Adams Co., ran away with G class marking his personal best tournament average. The WHPA exec's, Jaeger, Secord, and Sternberg, put it together for a change.

A number of pitchers excelled but were just not in the top three. Ron Lingard (B) pumped to a couple of 60% games. Chet Hermansen had the high percentage in C but wound up sixth. Fred Decorah (D) also had high percentage finishing second last.

Move over "A" class! Pitching in class D, Jim Haupt racked up an 82.8% tournament - over eighty percent misses, that is. He peaked producing the lowest average of the tournament. Some guys will do anything to get their name in the paper.

SIX SANDBAR WINNERS — SANTA'S SINGLES IN DECEMBER



Norm Mauthe, Platteville; Chet Hermansen, Madison; Bun Carley, Richland Center; John Carlin, Madison; Tony Scrima, Waukesha; Ron Lingard, Madison assembled shortly after receiving awards from Ron Berg at the December Santa's Singles tournament.

FREEZER00 V

#28-98-002

Ron Berg fired up the fifth Freezer00 for a two day run. The schedule had some deliberate holes designed for future adjustment. As always, a few pitchers could not make post time but the creative tournament director did his best to fill the voids. For one class he had Clayton Gage and Lorraine Sternberg splitting pacer duty. When they had enough Berg himself pitched a couple of games. He needs the work while switching to the one-and-a-quarter.

They call themselves the "Sandbar Sandbaggers" at the Arena courts and blatantly accept the slur. To prove it, Dave Forseth shut out his opposition with an overall performance near ten percentage points greater than his entering average. He has said, as if he means it, "What I need is a nice place to practice, indoors."

One month prior Forseth had to give up his spot on the schedule after only a few warm-up attempts because of a swollen right hand. Early that morning he was teaching a balky calf to drink from a pail. In the process he gave the calf a short right hand chop to the skull - hard skull - sore hand. This time Forseth was seen heading out to the courts doing another shift with a three class move-up.

A Clayton Gage 77.9; Ralph Maylahn 69.6; L Sternberg 70

B Gerald Weikert 54.6; John Crook 56.4; Tiffany Gage 57.8

C Ron Lingard 47; Tony Scrima 52; Luke Thompson 42.7

D Bill Hagen 50.4; John Carlin 43.2; Terry Sternberg 32.9

E Bill Dahmen 43.5; Julian Tijerina 42.9; Ken Frame 42.1

F Russ Burns 34.7; Jeff Gustafsen 37.7; Kenny Amble 29.6

G Dave Miller 36.4; Len Mauthe 38.9; John Gregorich 33.6

H Dave Forseth 1.6; Chuck Herman 28; Ken Davison 30.4

I Ray Lopez 29.2; Frank Dohrwardt 30.8; Mike Eddy 23.2

BELOIT DAY - ARENA

The second Saturday of February was Beloit-Day at the Sandbar. The club members and invited guests, filled the house with 35 pitchers. (Tom Cutts is still nursing a sore shoulder) Because of the odd number, one guy, Earl Paulson, was forced to hold up both ends of a doubles team making an A and B group of nine teams each. Teams were formed HI-LO.

As is the ordinary case when it comes to doubles, some pitchers can ride the wave of excellence in one game to almost non-production in the next game.

Carl Turman of Rockford, Illinois generally known as a journeyman "A" pitcher, was a guest of the Beloit Club. At Arena this day he met some of the local pitchers for the first time. Could be, he met them when they were riding the crest of the wave but he was impressed - favorably. For forty percent pitchers, he qualified, they are really capable of throwing some nice shoes.

After eight 25 point games, extra play-off games developed in both classes.

THE WHPA SCHEDULE

The following guidelines (a,b,c,d) were originally drawn up in 1988 to act as basic principles for all Wisconsin tournaments. Adopted at a State Meeting by a majority vote they went into effect in the following season. Only one club opted not to participate and was subsequently dropped from the WHPA schedule.

Every director whose tournament is listed on the WHPA schedule has signed the registration form indicating their willingness to comply with the existing guidelines.

Unfortunately, even after ten years, some of these principles are being ignored some of the time by tournaments still on the WHPA schedule.

Perhaps we should review our own bylaw requirements.

ARTICLE IX

Section 1. State Approved Tournaments

a. Publish a pre-tournament flyer declaring whether there may be mixed classes and the percent of entry fee remaining in the class.

[Because of the availability of the schedule, some tournaments no longer publish a flyer. Should we omit the words, "a pre-tournament flyer"? This Newsletter now offers free and timely publicity write-ups for all events - not flyers, but necessary information not shown on the regular tournament listing.]

b. Embrace the word "Open" to include all entrants possible without restriction to age, class or sex within the published entry limit number.

It has been suggested to add the word, "origin." Another word substitution could be, "gender" in place of "sex"]

c. Display a result board and post wins and losses after each game.

["Display" in this context means to hang or exhibit for all to see.. A result sheet that never leaves the scorer's table until after the class doesn't cut it.]

d. File results with the Secretary within 14 days and include \$.50 per adult pitcher.

[The fourteen days really should be cut to seven. The fifty cents due to the WHPA applies to all adult pitchers.-- It's considered part of the entry fee eventually passed on by the director at the time results are submitted.]

e. Cash awards won by juniors pitching in an adult class must be donated to the Junior Scholarship Fund.

[There's some gray area here. The whole thing should be prefaced with the word, "If."]

f. When a tournament has to be canceled due to weather or other uncontrollable events, the results will be considered final if at least one half of the scheduled events in a class have been completed.

[This sentence is essentially a repeat of NHPA Bylaw Article XII, Sect. 5.]

g. Those not abiding by these guidelines may be subject to removal from next year's schedule.

{Repeat: only one event has ever been removed due to non-compliance)}

If your 10 yr old pants don't fit anymore, or you're just plain tired of them, it may be time for new pants.

STATE DOUBLES

The entry form for the State doubles was published in January, should be in everyone's hands. The deadline for entry is March 31st. Averages used to seed the State Doubles will be the year end list also published here last time.

Walking doubles, new to most pitchers last year, should be a little easier the second time around. For certain, it promises to be an entertaining day.

Sunday, the 26th of April, the day of the State Doubles, follows the Saturday, Club Team event. Some pitchers will be going both days spending the weekend in Beloit.

It's always a treat to watch the development of the championship. Last year, when the combination of John Udelhofen and John Crook won, the spectators were only the lucky few who had wound-up their own classes early. Sure it's a big party when the whole field plays at the same time on 24 courts but it also keeps everybody busy pitching - nobody gets to watch.

What we do get to watch is the all important results board. This year maybe they'll put it where we can see it. Last year it was behind the scorer's table supposedly so the board people could get at it without interruption of onlookers. While the class is in progress, all we are interested in is wins and losses. It's all we have time for - turn in a scoresheet and survey the W's and L's. Later we'll look at the ringer totals when the class is done and the final board goes up. It may mean duplicate result sheets but it also eliminates the hassle of doing vertical book work

A good time to turn in an entry form for the State Doubles would be at the Spring Meeting.

HALL OF FAME ERECTED AT THE SANDBAR

A big Budweiser banner greets visitors proclaiming this place to be the "Home of the Horseshoe Hall of Fame!" The familiar display cases housing the WHPA Hall of Fame plaques have been mounted opposite court #1 on the North wall of the Sandbar Sports Arena.

The horseshoe pitchers of the Sandbar will never suffer for lack of an audience. More than 40 Hall of Famers, dating back to the original 1976 selections, of Greats, Harvey Elmeron and Casey Jones, have full view of the courts and vice-versa.

The first exhibition of the Hall of Fame, sponsored by the Eau Claire Club, is a glassed framework housing a figurine and featuring an engraved brass tag for each inductee. It is included now with the full display of picture plaques of all inductees. The first large display frame was built in 1986 by Harold Kloehn, Germantown, at the request of Susie Pritzlaff, also Germantown, then the director of the Hall of Fame committee. It was mounted in the barroom of Tom Roanhouse's former Pitchin' Palace in Sturtevant. After the Palace closed, the display went north to the Royal Wood Sport Center in Plover. At that time the display was captioned with the large blue and gold NHPA logos and the Wisconsin Hall of Fame title plaque thought to be the work of Brian Repinski of Plover.

Terry Sternberg, Richfield, built and added the second case when plaque space became necessary. He and Ken Jaeger of New London moved the display across the state to its present mounting at the Arena Sandbar.

1997 TOP TEN

Each year the NHPA Sanctioned Club or League program publishes categories of awards. A few Wisconsin pitchers made the list this year for their pitching excellence in 1997.

Most sanctioned leagues play count-all games of 50 shoes. A perfect game of all ringers would result in a score of 150.

The ten highest point-averages attained over the last season (some 2000 shoes) ranged from 124 to 114. Lorraine Sternberg, of the Goldendale club ranked sixth with 116.23. Her single high point game of 138 ranked fifth in the nation. Sternberg's ringer average of 70.04 qualified fifth among women and tenth overall. Her high ringer game of 88% tied for fifth high in the women's division.

Herman Adler, 82 years young, of the Waunakee Club was 3rd high with 35.71 percentage points over average

High ringer average for Junior girls in Wisconsin was claimed by Marcia Clark of the Close-Doesn't-Count League. She also ranked sixth nationally.

Two Wisconsin pitchers were awarded High Ringers Over Average patches. Heather Sternberg of Goldendale was eighth among women - 27.94 percentage points over and Herman Adler, 82 years young, of the Waunakee club was third high among the men with 35.71 percentage points over average.

The Sanctioned League Program, with 236 active clubs, originated in 1978. Continuous membership awards were presented this year to: the Waunakee Club as a five year member; to the Close-Doesn't-Count League as a ten year member, and the the Goldendale club for the full twenty years.

HEY RON WOLF—AVAILABLE for DRAFT

☆☆☆☆☆☆☆☆☆☆☆☆☆☆☆☆☆☆☆☆☆☆☆☆☆☆☆☆☆☆

☆ **PRESIDENT'S COLUMN** ☆

☆ One more bylaw change: Add to Article 5, Sect., 5; ☆

☆ Grade point average - "GPA" junior scholarship award. ☆

☆ Amount to be determined if approved. ☆

☆ The Hall of Fame is now located at Arena. I would like to ☆

☆ thank Terry & Lorraine Sternberg for their help in moving ☆

☆ and remodeling the cabinets, also again for the re-installation ☆

☆ along with the help of John Crook and Dave Forseth. ☆

☆ Wis. State Walking Doubles entry deadline is coming up ☆

☆ fast - 3-31-98. Should go smoother this year now that ☆

☆ everyone has an idea on how its supposed to work. ☆

☆ Please don't forget the Spring Meeting is at Arena, WI, ☆

☆ 3-21-98, time 12 Noon. Ken Jaeger, WHPA Pres. ☆

☆☆☆☆☆☆☆☆☆☆☆☆☆☆☆☆☆☆☆☆☆☆☆☆☆☆☆☆☆☆



Randy Rein, Mosinee, is the push of Marshfield I. Greg Bottlemy, Owen, pushes Marshfield II.



Imagine this impressive trio in pads- interior linemen for the Green Bay Packers? Actually they are: Steve Stevens, ringmaster, Ken Kosky, visiting director of the Wausau Open, and Mark Stevens, Marengo, 3 time WHPA Champion. The place is the Asland County Fairgrounds, scene of the Northern Wisconsin Ringer Classic, 1997.

NORM MAUTHE HAS PROBLEM

On arriving at the Sandbar courts on the first Sunday of March, we heard that Norm Mauthe of Platteville had a serious health problem and would not be pitching this day.

He was at home recuperating after a couple days in the hospital followig a frightening early morning attack. When he arose he found he couldn't speak. Apparently one of his sons Jeff or Mark was on hand to call for medical assistance.

His friend LaVern Edge, they talk 'most every day, says Norm sounds pretty good and is hoping for the best. Edge called it a mild stroke

Tip Wipperfurth and or Gail came up with a get-well card for the players to sign. Mauthe's address is: 865 Eastman St Platteville, WI 53818

300 PITCHERS AT SANDBAR IN 60 DAYS

A GOOD OMEN

It's far easier to list Arena tournaments after the fact. The schedule is sort of, play-it-by-ear. Tip Wipperfurth and Carl Gilbertson trade dates like counter-punching fighters - Packer game dates and bowling tournaments enter into the mix.

Lately there's some pitching going on almost every weekend and most often with more than a full house. Maybe it's just as well the Arena events have little advance publicity. The only way to accomodate more pitchers would be to enlist more promoters like Tip and Carl and pitch both days of a weekend. Eventually the army may spawn a few more generals.

Up to and including Wipperfurth's March first event, the Arena Sandbar has been host to 300 pitchers just this year, and that's all

January		
3rd	Tip's	doubles
17-18	Haupt's	0-1
31	Carl's	doubles

February		
1st	Tip's	doubles
7th	Beloit	doubles
14-15	Berg's	Freezeroo
21st	Carl's	doubles

March		
1st	Tip's	doubles

in tournament competition!

For an eight court layout it indicates dedicated local interest in the game of horseshoes (or a bunch of shoe bums with nothing better to do winter weekends.)

Compare the action to the NHPA's finest indoor facility, the Nashville, Tennessee showplace, or Music City's 18 court house. During the first two months this year with four sanctioned tournaments, those courts had less than half the players the Sandbar serviced.

OK, it's an unfair comparison. Wisconsin has many times the pitchers as Tennessee. But they do have splendid courts and they are inviting us to use them this spring.

The fall Music City Team tournament has been very successful but geared to top pitchers. Now they're going to host a summer variety, May 23-24, open to three player teams with a 150 percentage cap. Entry is \$90/team; deadline April 15th. Pitch both days for a purse of \$4,500. There's also 20 outdoor courts - room for 48 teams. Wanna go? It's just a day's travel each way. Entry forms and more information- 414-964-2735 -JH

The countryside on the way to Arena doesn't change much. It's the same road all winter. One could call October early winter and April late winter and everything in-between, real winter.

To pass the time for the two hour trip from Milwaukee and to fill the void where one argument lets off and the next one starts, we are constantly on the lookout for wild game. Deer and turkeys are the predominant species with the latter found in greater numbers along Highway 14 and the former more in evidence in the fields along I-94.

This day, the first one in February, we were tooling out the interstate maybe near Johnson Creek when the driver spotted a deer. "Hey, it's a buck," he exclaimed pointing. "Yeah, and its been there for two weeks and hasn't moved a bit," replied Mr know-it-all, "saw it right there last Saturday, going and coming."

Later we were approaching Cross Plains, or as they say in the valley, 'Plain,' whereupon we identified what seems like an endangered species in Wisconsin - a cock pheasant in its colorful splendor. (The rider is chiefly responsible for sightings but must bring them to the attention of the driver.) We couldn't miss this one. He was getting his daily grits right there on the shoulder. "Did you catch the hens?" the all knowing guide asked, "they were on your side. Now we are getting a clue on why the chicken really crossed the road!

A little further down the road we eased up on the gas for a curve and to get a better look at what appeared to be a hawk resting in a treetop near a creek. "Wait a minute. That's a bald Eagle! Wow!"

"Tony, we're going to have a good day. The signs are with us. We're going to do it today! What do you say?"

"What? Man, that is corny!"

So Tony said it again, "It's the first day of February and what do we see..., a cast iron deer, three pheasants feeding, and a bald eagle in a bare tree.

MAN FROM MAD-TOWN LOOSES IT

Most married guys like to warn bachelors of the impending doom. Some just smile and negatively shake their heads.

Jim Larson, Madison pitcher, is engaged to be married to a former doubles partner. It's doubtful he actually met Amy Abing on the court but we've seen the pair pitching together. He remarked they've known each other four years. The engagement is so new, February 28th, that no wedding date has been selected.



Chet's
CAR CARE

2020 Aberg Avenue
Madison, Wisconsin 53704
(608) 249-9887

Chet Hermansen
Owner

Professional Auto Care for Domestic & Import Light Trucks & Automobiles



"Home of the 7-1/2 lb. Pizza"

Frank & Barb's
COUNTRY INN

Downtown Le Roy

Featuring the Country Inn's Famous Pizza — Custom Built To Your Taste!

- Sandwiches • Char Broiled Steaks
- Soups Daily • Friday Fish Fry

FRANK & BARB DOHRWARDT — Proprietors Closed Tuesday
(414) 387-3311 - Mayville (414) 583-4534 - Oakfield 1-800-201-4534

DOWN AND BACK

with Jim Haupt

Scuttlebut from Arena: Seen on the courts; Fred Dec- orah's shirt says; "Merrimac Fire and Rescue," including the promise, "Same Day Service."

Heard at the bar: Ken Olson said LaVern Edge told him that the Mennonite followers in his neighborhood regularly drink a gallon of acylic paint thinner every day. Edge says he tries to drink a couple quarts himself

Here's one Gail, the Sandbar hostess, says is strange but true. A lady living on one of the new streets near the Sandbar had to call the Arena Fire Department after a flash fire developed while cleaning her oven. She reported the address as 123 Lois Lane. It is not known whether the firemen ever got there. They were not aware of the new street name but we heard they did drive around town looking for smoke.

Bob Ueker, on the radio during a spring training game: "The biggest thing in pitching a baseball is concentra- tion. You have guys pitching a foot inside when the catcher called for it over the outside corner... That's lack of concentration. And they'll tell you it is..."

So there you have it all you "concentration" guys, confirmation that the million dollar a year pitchers also suffer with concentration problems.

RECORDS RE-WRITE? From The Milwaukee Sentinel
1930 John Lyons, Wauk Jr Boys Champ - Casey 2nd
1931 Charles (Casey) Jones, Waukesha Jr Boys Champ
All contestants were under 15yr.

1931 Mrs. Chas. Z. Johnson Women's State Champion
Pictured: Ten women in Championship class, all in skirts.
1934 Gordon Jones, Waukesha age 11; wins State Boys title
pitching 57.4%. Ralph Maylahn (then) Milwaukee, is 2nd -43.6.

1998 NHPA/WHPA RENEWAL FORM

name.....1997 card #.....

add.....

city,.....

state,zip.....

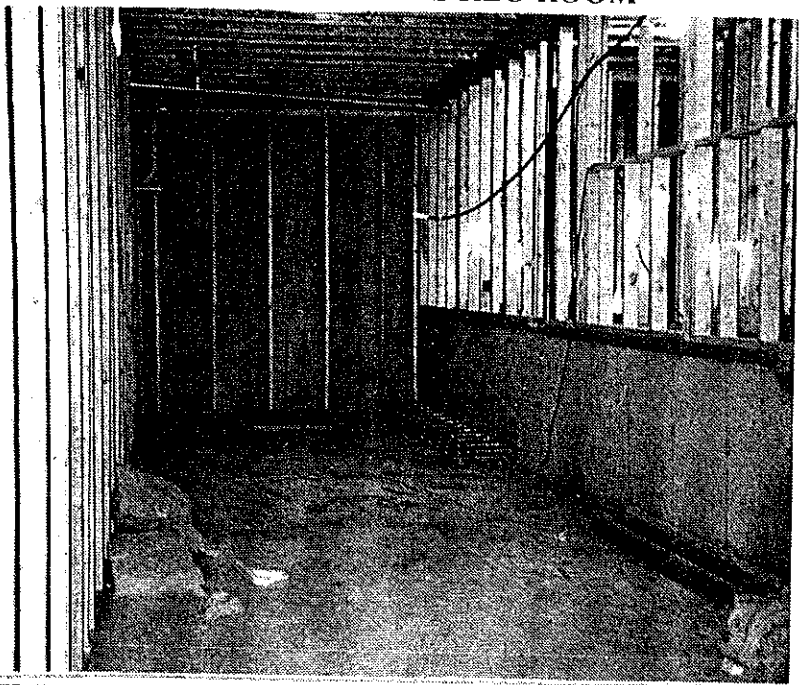
circledivision.....

men	women	jr girl	jr boy	elder(+70) men
\$17	\$17	\$5	\$5	\$17

Send to: self addressed stamped envelope appreciated.

John Secord
W6868 Brown Rd
Fond du Lac, WI 54937

RON BROCKWAY'S REC-ROOM



In 1995 Ron Brockway, of Onalaska, was faced with building a new house and had the opportunity to include an indoor horseshoe court. He had the basement excavated four feet deeper to accomodate a ten foot wide court area resulting in a 12ft clearance overhead. Chenoa Clay, courtesy of Eldon Bryant from the Illinois town of the same name, fills the pits. According to Brockway the pits need extra watering to prevent drying out in the indoor location. The court was made possible with the help of Ron's brother, Dick, and his dad, Duffy, who helped with installing the sheetrock and track lighting.

ALAN HEHLING

Alan Hehling of Merrill died unexpectedly in mid-February. He and his son Greg, also of Merrill, pitched for the Windy Hill Club. The Hehlings have been seen pitching various tournaments throughout the state. Seems like it was just a few years ago when we first met Al at the Las Vegas Open and just last year the two Hehlings teamed with fellow Windy Hillers, Rueben Eckhardt and Pat Spahn to win their division for the Club Team event. The Windy Hill Club and the WHPA will miss Al Hehling



WISCONSIN HORSESHOE
PITCHING SUBDISTRIBUTORS

GAME RELATED ITEMS

Elaine & Cliff Troullier
3126 Wagon Wheel Road, Manitowoc, WI 54220
(920) 682-3197



Finally!! North of Hiway 8 Tournament Results

The **Wet N Wild** tournament again was a fun tournament with some surprises. The weekend began with the Juniors pitching on Friday evening after a very filling Club picnic and season awards. Three classes of Junior pitched -- a total of 16 pitchers! These kids are fun to watch as they get excited about a shoe in the pit let alone a ringer or two. The ages of these pitchers ran from 6 years to 15 and both boys and girls trying for the BIG trophies donated by Wisconsin and Minnesota pitchers. THANKS to everyone who has donated. These kids are proud of their games. Saturday the adults took the courts to 'warm' up. We didn't need snowmobile jackets quite yet. Saturday evening a group of Minnesota and Wisconsin pitchers talked the usual "if only I'da" horseshoe talk during a tasty supper. Sunday featured the "hot shots" and some pretty great averages. The results:

Juniors A	Juniors B
Ricky Schaaf 4-1 8%	Jordan Johnson 4-0 11.25%
Corey Hughes 4-0 7.33%	Nicola Hichethair 2-2 2.5%
Marcia Clark 3-2 5.33%	Cyle Cleveland 1-3 5%
Juniors C	Class A
Josh Cleveland 5-0 4%	Jane Smith 6.5-5 67.14
Tim Swanson 3.5-1.5 1%	Clayton Gage 6-1 76%
Todd Nutter 2.5-2.5 5%	Randy Rein 4-3 75.71
Class B	Class C
Rosie Leyk 7-0 60%	Don Hostrup 6-1 48.28
Sue Helene 5-2 60.57%	Mary Denzin 5-2 47.12
Dick Dvorak 4-3 59.14	Bonnie Holland 5-2 46.28
Class D	Class E
Gloria Smith 7-0 52%	Gracie Reed 5.5-1.5 43.14
Bert Logsdan 5-2 38.57	Norm McCann 5.5-1.5 40.85
Bud Nelson 5-2 37.14	Larry Paulson 5-2 38
Class F	Class G
Ken Kosky 7-0 43.7	Myrna Leef 5-2 37.42
Dennis Keiser 6-1 41.42	Rick Wright 5-2 34.57
George Eckstrom 5-2 38	Robert Rehm 5-2 26.28



We are ready to defend the Club Team Championship in Beloit this April!

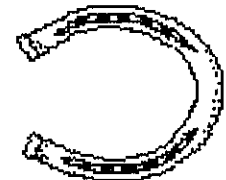


Fall Spectacular

This tournament can be very warm or very cold depending upon how warm you dress. The colors of the leaves in the park tend to take one's mind off of the temperature! Sometime the wind seems to move the shoe away from the stake but those who have pitched in Marshfield know what that is like. This Saturday tournament places Juniors with the adults so creates some hometown rivalries. Some rides to Eau Claire or Trempealeau can be filled with some good natured kidding! The Results:

Class A	Class B
Randy Rein 7-0 72.14	Barrent Dahl 7-0 56.78
Edie McKinney 6-1 63.57	Kent Anderson 6-1 54.64
Clayton Gage 5-2 65.35	Ida Hostrup 5-2 46.42
Class C	Class D
Shari Daviison 6-1 36.78	M. Gustafson 5-2 45.71
Bert Logsdan 5-2 43.21	Greg Hehling 5-2 39.28
Gloria Smith 4.5-2.5 38.21	B Knudtson 4.5-2.5 39.2
Class E	Class F
Bud Kuhnert 5-1 35.6	D. Hustings 3.5-1.5 16
Jim Ganther 4-1 28.4	C. Doughty 3.5-1.5 15.6
Kathy Hanson 3-2 34	Steve Matuk 3-3 19.6

We want to thank everyone who helped when asked. With everyone doing their share and then some, these tournaments run very smoothly. Our **Wet N Wild** tournament will be September 12 and 13. We will not be sponsoring the Fall Spectacular in 1998.



1997 State Club Team Results

My apology to Marshfield Horseshoe club for losing their check and entry to the State Club team competition.

Unfortunately, this club would not have interfered with the final standings:

- 1st **Close Doesn't Count**, 6.5 points, 10 pitchers, 2 Class Champions, 1 State Champion
- 2nd **Goldendale** 6.07 points, 13 pitchers, 2 State Champions
- 3rd **Eau Claire**, 5.52 points, 17 pitchers, 4 class champions
- 4th **Windy Hill**, 4.8 points, 19 pitchers, 3 class champions
- 5th **Marshfield**, 4.75 points, 8 pitchers, 1 State Champion

Congratulations!

ANOTHER LOAD OF TROPHIES GOES NORTH OF 8

NEW AND OLD



Clayton Gage, Jane Smith, and Edy McKinney are shown taking another load of yesterday's trophies North. Looking for a home for that dusty trophy collection? Contact Jane Smith who runs a summertime horseshoe school and manages to find reason to make a trophy award to each participant. These old trophies are going back into circulation.

NEW tournaments this year are: The Oxford Singles by Francis Schalk at Oxford, the NHPF Benefit (National Foundation) by Dick Hansen at the Fieldhouse in Caledonia also Archie's Classic by Haupt has a new location-Kewaskum.

Tournaments not repeating for unknown reasons this year are: Green Bay, The Fall Spectacular (Centuria) and Marshfield II.

Steve Wiegert reports that the Green Bay Club is undecided just where to pitch the league this year. Some pitchers may opt for the Combined Locks Club, others may prefer the Watering Hole. For his part, Wiegert says, there will be a Green Bay league this year.

Watch the Coming Events column. We already have a few planned events (TBA) unqualified for the official WHPA schedule.

TOURNAMENT PROMOTIONS

Or How To Advertise Your Tournament For Free

Using this new section of the Newsletter, the pertinent information usually listed on the flyer can be effectively spread over the entire state without the ordinary expense. For dates see the schedule. For additional information, consult this column. Hopefully tournament directors will use this advantageous offer.

PLATTEVILLE NHPA SPRING SINGLES

will again be hosted on the 13 clay courts of Legion Field. Using the self scoring devices will add to the cash awards expected to go to the top half of the class. When in town stop in and say hello at Country Kitchens of Platteville, a former sponsor of the NHPA Spring Singles and our fall tournaments too.

THE BELOIT ENCORE

With 24 courts under the cover of the Edwards Sport Center, the pitcher limit for the Encore is out of sight. Entry fee of \$18 includes scorekeeping costs. Awards will be cash only and some or all classes may be mixed distance pitchers. Pitch on the courts setup for the Team-World: Pitch the 98 Encore. Reservations accepted until April 18.

MUSKEGO DOUBLES

Bring a card-less partner, a guy or gal, to the Muskego Doubles. It's gender mixed and unsanctioned to attract new pitchers. -Shoe limit games set for moderate class time.. - Generous cash awards. -Setting a 100 point percentage limit but will accommodate all skill levels with additional classes.

OAKWOOD MALL - AN ANNOUNCEMENT

Randy Hansen of the Eau Claire Club has applied for sanction status for their promotional event within the Oakwood Mall.

Unannounced celebrity pitchers are expected to perform the weekend of March 15th. Eau Claire hopes to draw positive public attention and bolster club membership.

CLUB TEAM

is a four player, no percentage limit, team event lately divided into four classes. A fifth, or alternate, pitcher is acceptable as are mixed teams. Teams may originate from Clubs, Leagues, and Counties. All team rosters are subject to approval of tournament director. Awards are cash limited to entry fees within each class less administrative cost - near 80% return. Scorekeeping, if available, will be extra. Enter a full team roster early and save \$7.

ARCHIE'S CLASSIC

is going to the TEN, top of the line, clay courts of Kewaskum this year. The Kewaskum Club has entered into an agreement to operate the concessions while turning the tournament administration over to the director of the former Bro-Town event, Jim Haupt. Separate (M-F) classes only when fair competition is preserved. Innovative scorekeeping will be by players. 100% of entry fees remain in each class. Cash payback expected to be 85% Pitch the most attractive courts in Wisconsin, come to Kewaskum.

FULL RESULTS of the sanctioned tournaments listed above to be filed with WHPA. but publication limited to the top three in this Newsletter.

WISCONSIN HORSESHOE NEWSLETTER
W204 N11912 GOLDENDALE ROAD
GERMANTOWN, WI 53022

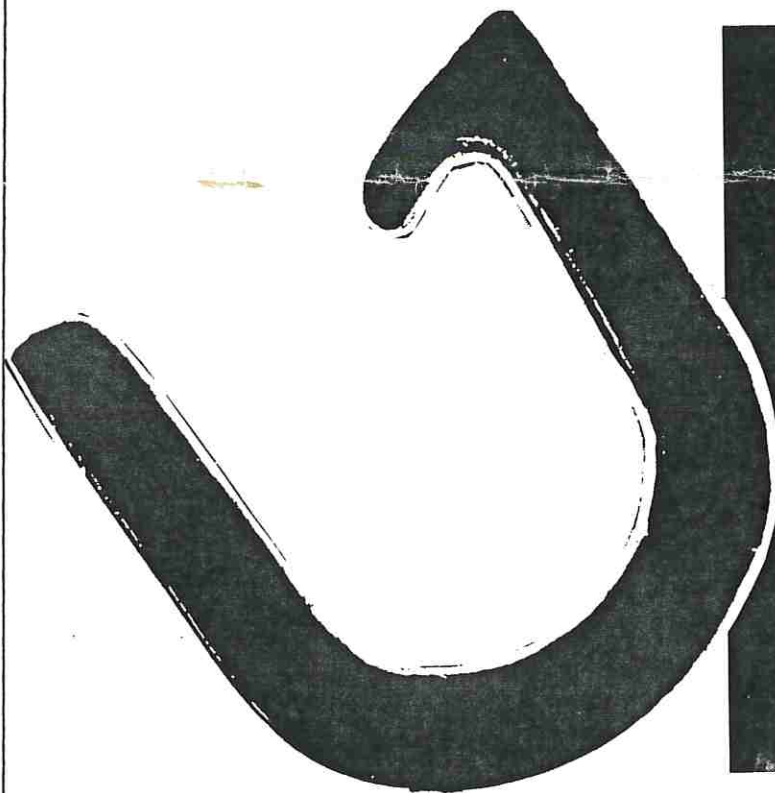


PLEASE SAY YES
TO THE NEW
MARCH OF DIMES



THE RINGLE-SINGLE

WHEN YOU'RE READY TO MOVE UP IN CLASS
"WE'VE GOT YOUR SHOES"



The man enjoys his favorite beverage.

RINGLE-SINGLE - THE ONE HOOK SHOE

Fully approved and sanctioned by the National Horseshoe Pitchers Assn.

Available through your NHPA sales representative

Designed and developed by Gus Schram, R7239 Hy Q, Ringle, WI 54471