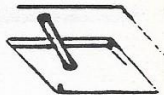


WISCONSIN HORSESHOE NEWSLETTER



VOLUME 3 NUMBER 5

OCTOBER 1988

STEVENS SMITH JAEGER BESTUL WRUCKE

The 1988 State Tournament hosted by the Marshfield club is history. The horseshoe history books will say all defending champions prevailed - Stevens, Smith, Jaeger, and Bestul showed that when the going gets tough the tough keep going. Where others failed they prevailed.

The (ugh) weather in Marshfield really was not as bad as in other parts of the state that weekend but..., we've seen better conditions throughout the entire season.

One group that did more than survive as the gang from North of highway 8 who have had so much experience with the "wet, windy and wild" conditions. Winners' particularly the champions, did not allow the unfavorable weather conditions to in any way affect their game. It was one more test of true champions.

Maybe it is unfair not to recognize the Marshfield club as a whole but it sure looked like the Ron and Roger show. Zepplin and Schultz were in the forefront and they also spent lots of hours at the courts.

Schultz said he was late for the Saturday night party because the automatic timer turned off the new court lights - TWICE! Hank Zeisse was on the courts at the time. Check the results. Betcha he was winning. He claims to have pitched the last ten shoes in the dark. "We could see those white stakes pretty good", Hank admitted.

Wow! I won \$2.00 at Marshfield - just for showing up. Actually everyone got a \$2.00 rebate when registering, reducing the entry fee to \$10.00. "Here's your \$2.00," they said, and there is the can for the Scholarship Fund. How could anyone refuse? Wonder how many other rebates found their

way to that Scholarship can.

GTE got behind the Marshfield club and donated thr trophies. Each award carried that message. Corporate sponsorship for horseshoes, amazing.

Even the judges were paid at State. Vince Jakel, head judge reported that \$3.00 per class was the going rate.

UPDATE

NEW STATE CHAMP

Royce Wrucke waited until the last match of the final day to move into the championship spot in the Senior Class. It looks like the old guys ganged up on ex-champ Sid Anderson and took him for two losses. Skinny Ollerman and Royce at one loss each, had to go at it one more time in a playoff match. Next year maybe you Seniors could play earlier so more of us could stay to watch and this newsletter could be more timely.



KUBLY, ANDERSON, ELMERSON, OLLERMAN, WRUCKE

STATE MEETING

Forty-seven WHPA members managed to arise Sunday morning in time for the annual Fall meeting. If you're interested that's about 12% of the membership setting the pace.

In his opening remarks, President Dick Hansen, stated that by appointment, the vacated office of 2nd V.P. will be filled by Eau Claire's Curt Bestul for the remaining year of the term. Curt had been listed as a candidate for one of the two V.P. spots available.

John Secord, State Secretary, reminded us that beginning next season each tournament director on the state schedule is asked to send fifty cents per pitcher excluding juniors, along with the results.

Curt Bestul spoke of the three important rule changes passed at the NHPA meeting in California. One, future by-law changes will be limited to every other year. Two, thirty foot pitchers are now asked to wait for their turn three feet behind the opponent. And three, World Tournament entry must be predicated by participation in three NHPA sanctioned tournaments. That sparked some lively comments mostly concerned with the lack of available sanctioned tournaments before the June 1 entry deadline. The 1990 W.T. bid was awarded to Stone Mountain, Georgia. (Next year it's Spearfish, South Dakota.)

Glenn Bogenschneider reporting on the Scholarship Fund pointed out the only withdrawal to date (\$200) has been in favor of Richie Weisskopf.

Fond du Lac, represented by their club president, Jim Bloemers, offered a bid (the only bid) to host the State in 1990. Kewaskum was to co-host providing the stasitical support group with FDL contributing the courts and site. Question was raised whether the grounds would be available for the normal Labor Day weekend. Not being able to guarantee the date, Bloemers asked to recind the offer. No other bids were forthcoming and the board deferred further action until the Spring meeting.

The apparent lack of interest shown for hosting the State developed into the creation of an incentive purse for the host club. A chorus of ayes greeted the proposal to reserve three dollars of each State Tournament entry fee for an insured profit to the host. Surprisingly the action was made to apply beginning in 1989. The approximately \$700 come-on should spur some activity by Spring.

Norm Mauthe inquired of the Secretary's fee 394 members = \$394, he was told. And that seemed to end what some thought was a pitch for a fee that would come a little closer to the energy expended. Too bad..., some of us weren't listening.

As advertised, Glenn Bogenschneider and Mike McDonald were nominated for 1st V.P. but Jane Smith was nominated from the floor and emerged the hands down winner. Al Lonning says he still loves us but it's time for some new blood. **THANKS AL LONNING**, - They said it with their applause. And, Jane Smith, you are hereby sentenced to two years as 1st V.P..



the
national
horseshoe pitchers
association

Game Related Items

wisconsin sub distributor
paul neumann
111 marcella st.
oconomowoc, wi.

53066 414 567 7001
call or send for 1988 catalog

FROM THE PRESIDENT

At the request of President Dick Hansen, the following letter is published concerning the new World Tournament entry requirement of three NHPA sanction tournaments.

9-19-1988

To Dave Loucks, president NHPA

This letter is written to answer a request from the members of the WHPA.

At our state meeting, Labor Day weekend, it was asked of me as president to forward to you our members displeasure the way in which a new bylaw was adopted.

That bylaw being the three NHPA sanction tournament requirement to enter the World Tournament in 1989. Our members where not against the three tournament rule, as much as the time frame for it to take effect. The majority of Wisconsin pitchers did not know of this rule until the state meeting, September 4th. We are a northern state and 90% of our tournaments are held in June, July and August.

We understand that it dates from June 1st until the entry is sent in the following year, but a person can not go back in time and enter a tournament that is now over! Nor can a tournament be now sanctioned. If we would have had more time many of these past tournaments would have requested to be sanctioned.

We now find ourselves scrambling to set up new tournaments and get them sanctioned, so our members can get in the required three tournaments. This is not an easy job when you have to fight the cold and snow. Some long standing WHPA and NHPA members will now more than likely have to miss the 1989 tournament. Maybe for only one year but still a great loss for them and the NHPA.

DICK HANSEN

P.S. Do you as a pitcher think it is fair to take and use an average from someone at a tournament in March, when they have not pitched since September. Rather than one from July, when he or she is pitching every weekend.

SPECIAL AWARD



GERI, JOAN, ANN, LORRAINE

The Chairwoman of the Hall of Fame selection committee also received an "award". Around the corner of the concessions and unobserved by most, we saw Ann Opsteen removing the wrapper from a floral display. Some of the girls who had dreamt-up the surprise gift were standing by to see the reaction. One of them explained this was in honor of Ann's twentieth State Tournament. Don Kangas happened on the little scene just as Ann was saying "Oh this is so nice". Kangas commented, "Hey Mom, you better wipe away those tears before they turn to ice."

6111 MAGNOLIA DRIVE
WISCONSIN RAPIDS, WISCONSIN 54494

OFFICE (414) 771-3750
HOME (715) 423-4522

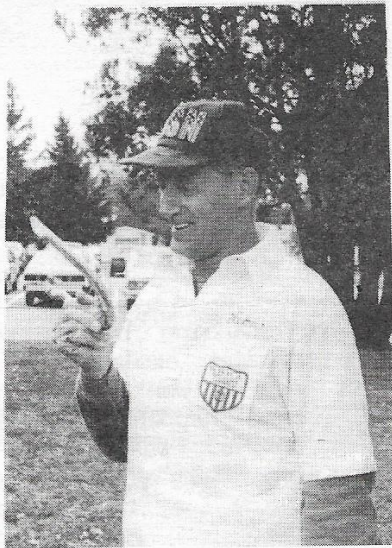
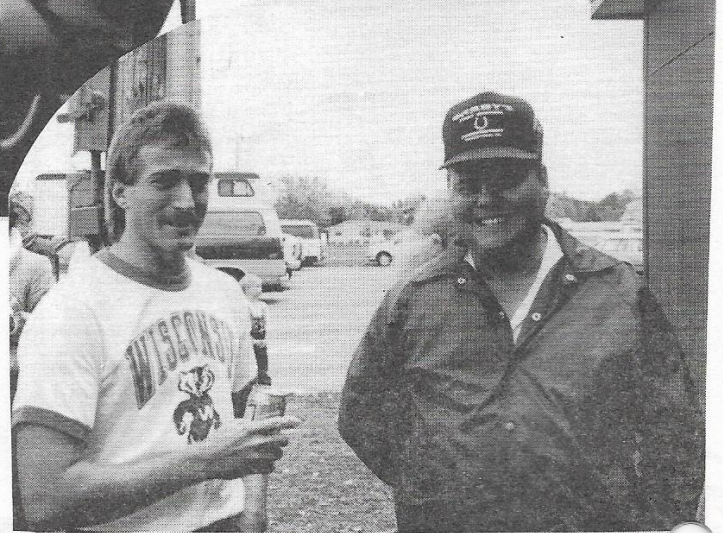
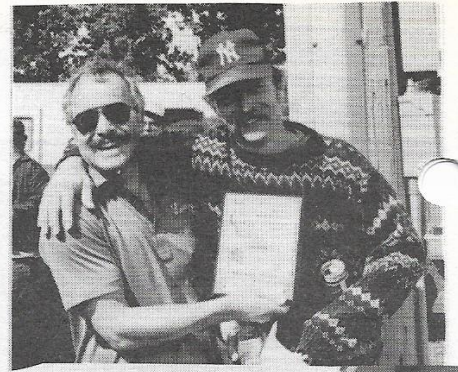
CHRISTOPHER J. KITTI
INVESTMENT PLANNER

Charter Investment Services, Inc.

AFFILIATED WITH CAPITAL FINANCIAL SERVICES, INC.

2323 N. MAYFAIR ROAD, SUITE 502
MILWAUKEE, WISCONSIN 53226

- MUTUAL FUNDS
- CORPORATE BONDS
- CASH FLOW REAL ESTATE
- GOV'T BOND PORTFOLIOS
- TAX FREE SECURITIES
- IRA'S
- SEP-IRA'S



'88
STATE

LEON UHL
TALKS TO HIS SHOE



PLATTEVILLE OPEN

by **Norm Mauthe**

Entries were up with a total of 88 pitchers. Glen Henton repeated as men's champion. Henton, John Udelhofen, and Jerry Roussel of Iowa all tied for high game with 78%. New women's champion, Karen Hoff, set a new record and also had two high games of 58%. Barb Weigel more than doubled her average in her first open tournament. New junior champion, Mark Mauthe set a new junior record. Jerry Udelhofen had a 64% game in class C men. This was the best pitching we have ever had in class B & C men.

Thanks for entering our tournament. Platteville Horseshoe Association

Class A			Class B		
Glen Henton	7-0	69.1	Arnie Walton	7-0	51.7
John Udelhofen	6-1	62.0	Dick Holdridge	6-1	53.4
Class C			Class D		
Ed Richardson	5-2	36.0	Bud Renley	6-1	32.0
Jerry Udelhofen	5-2	48.0	Paul Federer	5-2	36.8
Class E			Class F		
John Bentz	6-1	40.2	Dennis Zeisse	6-1	25.4
J. Reuter Jr.	5-2	30.2	LaVern Richard	6-1	29.1
Class G			Class H		
Norm Beckius	5-1	26.3	Dale Griffith	5-1	15.6
Has. McPhail	5-1	24.3	Paul Moen 3	3-3	15.3
Class A Women			Class B Women		
Karen Hoff	5-0	55.2	Barb Weigel	5-0	38.0
Sally Dietzel	3-2	40.4	Velma Melssen	4-1	24.0
Class A Juniors			Class B Juniors		
Mark Mauthe	5-0	49.6	David Carley	7-0	21.7

EAGLE

The Fred and Rudy extravaganza (Zeilstra and Stark) under the big top at Eagle was in Zeilstra's words a roaring success. "What a difference a year makes. Last year it rained for two solid days forcing the cancellation of the tournament and subsequent rescheduling for the following week. This year it was three days of sun, fun, and lots of ringers for the 148 players that made the 14th annual Eagle Open a roaring success."-From Zeilstra's results Sid Anderson was a last minute move-up to "A" class -and came close to winning. Grant Hintz, the pitchingest pitcher to frequent the Palace was top guy this day; unique in his delivery but a deadly accurate stake banger.

The larger crowd came Saturday and prompts Zeilstra to ponder running "A" the first day next year. As final placements were being announced all pitchers were called from last to first. Each received a print-out of the class from Fred's computer.

Eagle Results

Class A			Class B		
Grant Hintz	6-1	60.8	Dennis Ambuehl	5-2	42.0
Sid Anderson	5-2	62.5	Rich Brower	5-2	48.2
Class C			Class D		
Bill Weber	6-1	48.5	Dick Engmann	6-1	42.8
Felix Kubly	5-2	45.7	Christopherson	6-1	37.1
Class E			Class F		
Ed Abendroth	7-0	45.7	David Volz	6-1	43.2
Bob Jackson	6-1	42.5	BOB Traber	5-2	33.9
Class G			Class H		
Roy Raduechel	6-1	36.4	Bing Noltemeyer	6-1	32.1
Jeff Kramer	6-1	36.0	Pon Rammist	5-2	38.2
Class I			Class J		
Scott Sekeres	6-1	30.0	Mike Lange	5-2	24.6
Richard Conrad	4-3	29.6	Norm Beckius	5-2	31.0
Class K			Class L		
Tex Tabat	6-1	23.9	John DeVault	6-1	20.7
Carl Helland	4-3	27.8	Dale Webster	5-2	18.9
Class M			Class N		
Virgil Nelson	8-1	30.0	Pete Gottgetreu	6-1	20.3
Bob Kaiser	7-2	23.3	Galen Ames	5-2	19.2
Class O			Class A Women		
Jim Monogue	6-1	19.2	Karen Hoff	6-1	49.2
James Stephan	6-1	10.0	Rose Meyer	5-2	40.3
Class C Women			Class B Women		
Sally Kubash	4-1	30.0	Sarah Heitzman	5-0	29.0
Karen Szymkowski	3-2	27.0	Cathy Kolpin	4-1	32.5
Class D Women					
Gail Clark	5-0	11.3	Bette Helland	3-2	11.3



**WE WELCOME THE
STATE HORSESHOE TOURNAMENT
TO MARSHFIELD**

GTE BUSINESS SOLUTIONS

Telephone Systems • Facsimile Machines • Voice Mail
 Personal Computers • Wang Minicomputers
 Portable Computers • Software • Local Area Networks
 Printers • Modems • Network Consulting

For more information, call 1-800-826-4700

1988 WHPA HALL OF FAME



DARLENE EBERT

Fillmore's Darlene Ebert was inducted into the Hall of Fame and accepted the plaque from President Dick Hansen. Among other credits we learned that through the years 1972-75, she was the top Lady in Wisconsin. Her next public appearance will be at the Pitchin' Palace during the "Hall of Fame" tournament November, 5-6. The other inductee to the Hall of Fame also made his last mark in the 1970's Harold Sheets first won the State title in 1932, again in '33 and forty years later in 1973. His letter of acceptance was read at the Marshfield courts.

LETTER

JUNE 1988

To whom it may concern

It is with pride that I except the award which enters my name in the horseshoe Hall of Fame.

I remember with fondness, those early days in Wisconsin, when I would pitch for the mere pleasure of the sport. Also the fun we use to have, such as knocking a cigar out of a person's mouth at the length of the court. Also the folks I met along the way. People whom became friends, win or lose. We always shared a warm handshake and a smile.

These days, both my wife and I are retired. Being retired by far, doesn't mean being inactive. In fact, I'm twice as active as before, with that in mind, I'm afraid I won't be able to attend the awards presentation this Labor Day.

I do send my most hardy thanks and my hat is off to the other person who is selected to be placed in the Hall of Fame.

...of course, my door here in sunny San Diego, will always be open to my horseshoe family, back in Wisconsin.

Meanwhile, I certainly would like a photo of the display, with my display, again, I except this award with pride. Thank you, very much.

HAROLD SCHEETS God bless to you all

P.S. I want to remind the young folks that pitching horseshoe, is as noble a sport as any one sport can be.

HACIENDA

Entry blanks are now available for the Las Vegas, Hacienda Tournament. It's to be a Monday thru Friday (Nov. 28-Dec. 2) affair. Will be held on 18 indoor - modified porto'courts with the new pitching surface of Palladium Turf. \$2360 in prizes. For a preliminary schedule and entry form contact this Newsletter. Entries close at 5 P.M. Monday the opening day of the tournament. NHPA sanction No. 26-88-100

WHY SETTLE FOR SECOND BEST?

THE ORIGINAL  TROPHIES

OVER 27 YEARS OF QUALITY SERVICE

213 N. BROADWAY
 Milwaukee, Wisconsin 53202
 (414) 224-4999
 MANUFACTURERS & ENGRAVERS
 One Day Service

MEMBERS OF WHPA

IN MEMORIAM

Ed Abendroth, 59, a Milwaukee pitcher, suffered a fatal heart attack in early September. He was a recent member of the WHPA and an up and coming tournament player. This season he won trophies at Goldendale, Eagle, and the Anchor Inn. The sudden loss of this enthusiastic man startles and saddens us all. Our sympathy is extended to his wife, June and entire family.

FOND DU LAC

The Winnebago Land Open was yet another computerized tournament. Thanks to Herb Theisen, from near-by Kewaskum, Jim Bloemers, the FDL director had the benefit of a computer to handle stats. Bloemers estimated that it cut the task to one-third of the former labor required. (Can anybody write a program to replace scorekeepers?)

The FDL club has so many courts that scorekeepers were at a premium. The funniest guy at the tournament was the P.A. announcer as he struggled with all those names. Either he will have to take a course in ethnic pronouncing or FDL will have to discontinue paying all places.

Area pitchers represented forty percent of the total draw. An outstanding women's division featured four classes of fairly tight competition excepting the 'A' winner of course, who put on a 64% "show".

<u>CLASS A</u>		
Ralph Maylahn	6-1	58.5
Leon Uhl	6-1	54.2
<u>Class C</u>		
G. Gromowski	6-1	42.2
Ed Crockett	5-2	41.1
<u>Class E</u>		
H. Wendorf	6-1	28.0
C. Goldapske	5-2	34.5
<u>Class G</u>		
John Gomoll	5-2	28.8
N. Strzyzewski	5-2	26.2
<u>Class I</u>		
Jerry King	7-0	
Dan Ebert	5-2	27.7
<u>Class K</u>		
Chas. Schwartz	4-1	20.8
<u>Class A Women</u>		
y Srenaski	4-1	64.0
Ann Opsteen	3-2	47.6
<u>Class C Women</u>		
Rita Boegel	4-1	30.0
Gloria Prislant	3-2	26.5
<u>Class A Juniors</u>		
Scott Toth	5-1	16.2

<u>CLASS B</u>		
Jim Haupt	6-1	52.2
Norman Kuen	6-1	51.7
<u>Class D</u>		
Elmer Bigfire	6-1	43.1
Terry Schrage	5-2	34.8
<u>Class F</u>		
Leo Zamzow	6-1	40.5
Ken Davison	5-2	33.4
<u>Class H</u>		
Vic Rose	6-1	28.0
John Quandt	6-1	24.8
<u>Class J</u>		
John Jashinsky	6-1	18.5
ED Ballwanz	4-3	16.0
<u>Class L</u>		
G. Zivkovich	4-1	13.6
<u>Class B Women</u>		
K. Illetschko	5-0	29.0
Alice Sukowatey	4-1	36.0
<u>Class D</u>		
Diana Dietrich	6-0	9.1
ViAnne Nelson	4-2	7.0
<u>Class J</u>		
Aaron Abel	4-2	5.8

DOWN AND BACK

WITH JIM HAUPT

I was tooling down the main drag in Marshfield with Tony Scrima as navigator. We were trying to decipher street signs looking for that Saturday night horseshoe party when Tony spots a familiar face in the other lane. Cranking down the window he shouts, "Hey Ralph, where's that Labor Temple?" The decriptive reply came, "Oh I've already been there."...Can you beat that? Caledonia is so close to Milwaukee's South side that the dialect is rubbing off on Ralph Zeiss. It's O.K. Ralph, we found it.

Received a flyer from Dan Bloom for SOLIDARITY FEST, a benefit for local 2247, Stuoghton Trailer strikers. Saturday Oct. 8th, just one day, for a horseshoe tourney, a softball tourney, and a car show. From the flyer, we see there will be an auction at 1:00 PM and a host of other attractions including: pony rides, dunk-tank, pig roast, beer garden, and food and music. All takes place at the union hall, 1795 LaFayette St. Janesville. If there's still time call Dan Bloom, 756-1753.

Are you looking for a NHPA sanctioned tournament? Need two or three? Turn to the back page Pitchin' Palace ad. **FIVE** tournaments will be sanctioned this indoor season. Three are open tournaments. For that reason, director Dick Hansen, expects a slightly larger turnout at the November 5-6, Hall-of-Fame. Sunday Darlene Ebert will hang her plaque in "the Hall" along with the plaque for Harold Sheets. Entry fee is \$15 to Dick, address appears in the P.P. ad back page.

AT THE STATE...

All the juniors received a participation award. The trophy supplier, an advertiser in this Newsletter, Burt Trophies Inc., sponsored the gift of a little figurine on a marble-like base. We appreciate our juniors and welcome the fact that others do too.

**1988
HALL OF FAME
TOURNAMENT
PITCHIN' PALACE
NHPA SANCTIONED
NOVEMBER 5TH & 6TH
MEN - WOMEN - JUNIORS
ENTRY FEE \$15 JUNIORS FREE
ALL \$ LESS EXPENSES REMAIN IN CLASS
CASH AWARDS ONLY
ENTRY DEADLINE - OCTOBER 28TH**

SEND TO: DICK HANSEN
3085 SOUTH 76TH STREET
FRANKSVILLE, WI 53126
414-886-8555 OR 414-835-1321



VICE PRESIDENT, CURT BESTUL & BEATY

RESULTS-----LOYAL CORN FESTIVAL

<u>Class A</u>			<u>Class B</u>		
Gladio Lila	6-1	46.5	Jason Hertel	6-1	49
Chet Ogiba	5-2	55.4	Sid Hough	6-1	41
<u>Class C</u>			<u>Class D</u>		
Sara Ross	7-0	44.6	Janice Hertel	6-1	35.3
Martin Ferkus	6-1	41.0	Bernie Selby	5-2	37.1
<u>Class E</u>			<u>Class F</u>		
Richie Nowak	5-2	30.0	George Draeger	6-1	32.3
Gerald Kobiske	5-2	31.7	Aaron Gregorich	6-1	34.2
<u>Class G</u>			<u>Class H</u>		
Jerry Nowak	5-2	29.2	Paul Neumann	6-1	33.3
John Jankovich	5-2	26.0	Scott Hertel	5-2	27.1
<u>Class I</u>			<u>Class J</u>		
Ron Nowak	5-2	21.0	Mike Hayes	6-1	25.7
Del Kuen	5-2	15.0	Jerry Wilgen	6-1	18.5
<u>Class K</u>					
Susan Schilling	6-1	9.5	Gary Harriman	5-2	9.0

**DEADEYE HORSESHOES
NOW**

Clydesdale model "DEADEYE" Horseshoe. Drop Forged

Susie Pritzlaff W204 N11912 Goldendale Rd. Germantown, WI 53022 Ph. 414-628-1484	Bill Courtwright P.O. Box 742 Fenton, MD 63026 Ph. 314-677-2200
---	--



BURT TROPHIES, INC.

10885 Trophy Lane & E. 29th St.
Marshfield, Wisconsin 54449

Telephone 715 384-5839

Call or write us for all your award needs. Write for free color catalog.



IMPORTANT

MOVING?

DID YOU MOVE, ARE YOU GOING TO MOVE? When you change your address, you must inform us. The newsletter is fourth class mail and is not forwarded. Some subscribers have missed their copy for this reason.

SPEARFISHING AT BALSAM LAKE

The "Windy, Wet and Wild" tournament sponsored by the Close Doesn't Count league was sanctioned at the last minute. Realizing the need for additional sanctioned tournaments to qualify for the Speafish, South Dakota World Tournament, Jane Smith elected to put the NHPA sanction number on this years tournament. She announced at the State meeting that they will conduct another sanctioned tournament April 29-30, 1989,...if the snow cover North of highway 8 has melted by that time. Jane wonders if the NHPA people in California considered the fact that North of highway 8 it snows October through April. Snow time is no time for horseshoes.

ANCHOR INN

The heat was there but the big willow put most of the field in the shade as "A" made their bid Sunday afternoon on the shore of Pewaukee Lake. The Anchor is being hoisted. The Inn is changing hands. Mike Wautry will be associated with the "Crossroads", another watering depot located in Germantown at the intersection of Maple and Fond du Lac roads.

Sid Anderson continued on his "roll" here. Saw more than a couple of guys from Beloit at this one but don't count on it for next year. Plans are to move the stakes to the new place.

Class A		Class B	
Sid Anderson	57.7	Paul Breen	39.6
John Koepf	49.4	Earl Paulson	36.8
Class C		Class D	
Chuck Koehn	42.5	Norm Beakus	28.8
Jeff Kramer	35.4	Larry McCutcheon	28.8
Class E		Class F	
Tom Steinke	26.8	Chuck Radl	30.7
Tom Gierach	23.9	Chip Hoffman	18.6
Class G			
John Conley	15.0	Don Vaughn	21.0

FILLMORE

All the ladies played "night games" at Fillmore this year. Saturday was overcast and misty. Rain caused a two hour delay so the three ladies classes started at 7:00 PM. Class "A" Lady-of-the-Night was..., Lorraine Sternberg. Sunday broke bright and cool with airy breezes, signatory to a fair day at Fillmore. With the dawn came class "B" to make room for the Juniors. Therein Mark Mauthe, Platteville, upset Mark Struebing, Campbellsport. Pam Steinke Waukesha, just a beginner won class "B" with a sweet and natural 1 1/4.

Through it all the whistling westerlies whisked across the USA courts; made the flag snap with a few gusts and gave the pitchers the illusion that their shoe suddenly sailed East like the Artful Dodger.

Class A			Class A Women		
Roger Poutanen	6-1	61.4	Lor. Sternberg	5-0	54.0
Leon Uhl	6-1	57.1	Cy Srenaski	4-1	55.2
Class A Juniors			Class B		
Mark Mauthe	5-1	47.3	Jim Haupt		
Mike Struebing	4-2	40.0	Gerald Weikert	5-2	50.2
Class C			Class D		
Elmer Bigfire	6-1	45.7	Ernie Sebranek	5-2	33.4
G. Gromowski	5-2	43.2	Jim Berg	4-3	36.8
Class E			Class F		
Leo Zamzow	6-1	32.2	Lefty Reich	6-1	32.5
Ron Sabish Sr.	5-2	34.2	Lloyd Rouse	5-2	34.6
Class G			Class H		
Herb Theisen	7-0	27.5	John Wallendahl	5-2	29.4
Ken Davison	6-1	26.6	Ron Sabish Jr.	5-2	28.5
Class I			Class J		
John Abraham	5-2	23.5	Mike Wiedmeyer	6-1	8.5
Tom Legate	5-2	22.5	Ken Knowles	5-2	11.0
Class B Women			Class C Women		
Darlene Sabish	4-1	40.5	Jane Meier	5-0	23.0
Carrie Struebing	4-1	34.5	Sandy Hielgendorf	3-2	23.0
Class B Juniors					
Pam Steinke	7-0	11.7	Jeff Sabish	6-1	10.0

One Day Service
Sales Incentives
Awards, Trophies, Plaques

Manufacturer

RUDIG OLYMPIC AWARDS
126 S. 2nd Street
Milwaukee, WI 53204

Royce DeBow (414) 273-2727
National Sales Manager

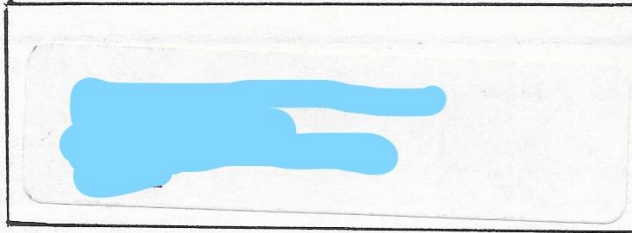
NHPA SHIRTS ON SALE
RED, LITE BLUE & WHITE
ALL SIZES - \$12.60

SEND TO: PAUL NEUMAN
111 MARCELLA STREET
OCONOMOWOC, WI 53066
414-567-7001

WISCONSIN NHPA DISTRIBUTOR

WISCONSIN HORSESHOE NEWSLETTER
W204 N11912 GOLDENDALE ROAD
GERMANTOWN, WI 53022

BULK RATE
U.S. POSTAGE
PAID
PERMIT NO. 25
GERMANTOWN, W
53022



Off I-94 on West Frontage Road Between Hwy. 11 & Hwy. 20

The Pitchin' Palace, home of team horseshoes, will host two COUNTY TEAM tournaments this year. Interested players may contact the Pitchin' Palace for further details. Format will be determined by the number of teams entered. Open to all county teams.

For the benefit of World Tournament qualifiers, the next listed three tournaments will be NHPA SANCTIONED requiring the possession of a NHPA CARD. Card numbers are requested with entry fee. A limited number of non-cardholders will be allowed to enter on a one-time basis. Enter early to qualify.

There will be three traditional eight-person, round robin tournaments with scorekeepers provided. They are the HALL OF FAME tournament, the SPRING OPEN Tournament, and the JUNIOR SCHOLARSHIP BENEFIT tournament. Entry fee for these tournaments will be \$15 per person. Deadline is ten days prior to the respective tournament. NHPA SANCTIONED

A RINGERS ONLY tournament is scheduled for early December. For eight person classes, awards will be \$30 for first, \$20 for second, and \$10 for third. The balance of the money will be put toward user fees. Entry fee in this keep your own score tournament will be \$10. Deadline is ten days prior.

Three HOMERS, the popular doubles tournaments, will be hosted this season. Homers are round robin, 80 percent handicap tournaments. Bring your own partner. Prizes are 40% of the entry fee for first, 20% for second, and 10% for third. Registration and deadline is 12.00 noon the same day.

Send entries to the Pitchin' Palace 14000 Leetsbir Rd., Sturtevant, Wi, 53177 or for sanctioned tournaments to Tournament Director, Richard Hansen, 3085 S. 76th St., Franksville, Wi, 53126.

Dick's telephone number is 414-835-1321

PITCHIN' PALACE TOURNAMENT SCHEDULE 1988-89

- OCT. 15, SAT. A Homer Tournament Register; Noon
OCT. 23, Sun. A County Team Tournament
Open to your county team
Nov. 5 & 6 Sat. & Sun. Hall of Fame Open
Ceremony for Hall of Fame inductees Sunday
afternoon. NHPA SANCTIONED *****
Deadline 10 days prior
Dec. 4, Sun. Ringers Only D/L 10 days prior
Dec. 17 Sat. A Homer Tournament Register; Noon
Jan. 21 Sat. A Homer Tournament Register; Noon
Feb. 10, 11, 12, Fri., Sat. & Sun. NHPA SANCTIONED****
Pitchin' Palace Team World Tournament.
Teams from the U.S. and Canada will compete for thousands of dollars in prize money. Hopefully the top pitchers in the World will compete
Feb. 26, Sun. Another County Team Tournament
Bring your county Team
Mar. 4 & 5 Sat. & Sun. The Spring Open Singles
*****NHPA SANCTIONED*****

DEADLINE 10 DAYS PRIOR

- MAR. 18, Sat. The Club Team Tournament
Wisconsin clubs bring their four top pitchers to the Palace for a daylong Shootout. Janesville is the defending Champion. *****NHPA SANCTIONED*****

DEADLINE MARCH 4

- APR. 21 & 22, SAT. & SUN. The Junior Scholarship Benefit Tournament, 8-man R.R., singles.
*****NHPA SANCTIONED*****

DEADLINE 10 DAYS PRIOR



414-886-8555

1 Hour North of Chicago
1/2 Hour South of Milwaukee

14000 LEETSBIR ROAD
STURTEVANT, WI 53177