

SPLIT TEAM IN/KY WINS TEAM WORLD



INDIANA #3, DALE HENRY, SUE SNYDER, RON POWELL, LOIS WEBSTER ACCEPTING AWARD FROM PITCHIN' PALACE OWNER, TOM ROANHOUSE

BY JIM HAUPT

Sue Snyder of Indiana, Dale Henry, also Indiana, plus Ron Powell and Lois Webster, both of Kentucky teamed up to win the Pitchin' Palace Team World Tourney. They are listed in the results as "Indy #3 with a combined percentage of 69.78. It took two matches but they finally pushed Missouri off the top.

This was just little old Sturtevant, Wisconsin. But the middle of February means Team World Tournament time and horse-shoe pitching of the highest caliber.

Teams from eight surrounding states and two Canadian provinces gathered again to form the largest ever, eighteen team, tournament here.

Forty shoe limit games and a "starter" Len Meistad, kept the affair pretty much on shedule.

Some teams came a full day early to warm up. Some arrived a day and one-half later and had to catch up. Ralph Dykes came with the first and left with the last. A job is not done until the paper work is done.

The twelve courts at the Pitchin' Palace were filled and refilled as the teams marched through fifty-one preliminary games. Beginning Friday evening at 5:30PM and concluding 1:30PM Sunday, they pitched for a position on the five team ladder playoff.

Competition from all angles made it impossible for any one person to go unbeaten; although Charley Webb, percentage leader, came closest winning sixteen for seventeen games.

Teams were expected to drop a few games on their way to the ladder playoff. Of a possible sixty-eight, Illinois, last year's winner, managed forty-three wins for an all-important fourth seed tie. Indiana came on strong Sunday to also figure in the tie. The first playoff game between these two teams resulted in another, two-two tie. Officials collected score sheets and made a ringer count. It was Indiana by one ringer. Up the ladder...

Minnesota had five more prelim wins but Indiana moved them into a final fourth spot advancing themselves to the third step with a four and zero preformance.

The Indy#3 team (half Kentucky) ranked second and put an end to Indiana's run by three to one. Up the ladder to meet Missouri for the finals...

The match was tied two games each. Tournament rules called for a replay. The Indy#3 team earned a three to one edge to become the 1989 Team World Champion

Missouri's only winner in that last match, Alan Francis, pitched the high ringer game of the entire tournament; only two misses in forty shoes gave him the mark of 95%.

When Ron Powell, Kentucky, accepted the first place money from Tom Roanhouse at The Team World finale, it was with some reluctance. Roanhouse stated that Powell

TEAM WORLD CONTINUED

thought some of the competition was angry that he, being from Kentucky was allowed to pitch with an Indiana team. Roanhouse told him, "No you were approved, we knew you were coming." He went on to explain that one pitcher from another state is encouraged in hopes that he will return the next year with a team from his home state. "But we did not know until the team walked in the door that the Kentucky ladies champ was coming.", Roanhouse said, adding that he knew a last minute substitution was necessary but he (Roanhouse) thought the sub would naturally be from Indiana. At that time the tournament was already in progress. The committee had to live with the situation and hope others would understand. "We do and we learn. It's our creed." Roanhouse stated.

An array of strange license plates belonged to the seventy-two tournament pitchers but at least two shoe buffs drove down from Minnesota just to spectate and be part of the big event.

Bev Nathe, Minnesota State Champ, escorted by her husband interrupted a Arizona vacation and flew in. Eight from Saskatchewan pitched. Hope they were also flying.

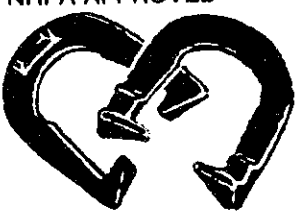
Some competitors (not in the money) indicated their dedication to the Team World in their glowing comments..."It's my favorite tournament." or "I like the way everyone stays around to talk it over." and God willing, you bet we'll be back next year."

Whether it's the team concept or just plain cabin fever that attracts the February crew to return each year in larger numbers is still a question but come they do. The only question remaining is, how do you put a limit on such avid participation?

TEAM WORLD TOURNAMENT
FEBRUARY 10, 11, 12, 1989
PITCHIN' PALACE
STURTEVANT, WISCONSIN

PLACE	TEAM	WINS	%	PLACE	TEAM	WINS	%
1st	Indiana #3	50	69.78	10th	Sask. #1	32	59.23
	S. Snyder	14	64.56		H. Weitzel	13	67.65
	D. Henry	11	63.97		A. Ross	6	56.32
	L. Webster	15	75.59		M. Ellison	8	62.50
	R. Powell	10	75.00		I. Finnie	5	50.44
2nd	Missouri	51	70.44	11th	Ohio	30	56.40
	S. Carter	14	70.74		E. Sarbaugh	10	66.68
	C. Killgore	14	73.53		L. Miller	6	55.29
	A. Francis	12	78.24		D. Manns	10	63.24
	L. Bensinger	11	59.26		C. Bonham	4	48.38
3rd	Indiana #1	43	68.24	12th	Indiana #2	26	56.65
	C. Bellman	12	73.68		M. Blankenship	5	61.62
	M. Seibold	14	77.79		G. Rathburn	5	48.38
	B. Seibold	8	64.41		R. Parrish	10	60.74
	C. Seibold/L. Rowe	9	57.06		D. Tahlbee	6	55.88
4th	Minnesota	48	67.50	13th	Iowa #2	25	53.71
	P. Negaard	15	74.71		H. Hass	8	56.91
	D. Hughes	10	69.41		R. Burgess	6	56.47
	L. Lipovsky	11	64.26		W. Wilson	0	36.18
	B. Nathe	12	61.62		H. Darnold	11	65.29
5th	Illinois #1	43	69.01	14th	Sask #2	23	52.02
	C. Webb	16	79.71		D. Spilchen	4	52.50
	C. Baker	12	78.82		T. Spilchen	6	50.59
	B. Ward	10	63.24		C. Finnie	9	58.82
	J. Dumstorff	5	54.26		M. Roskel	4	46.18
6th	Wisconsin #1	41	64.23	15th	Pitchin' Palace	22	45.85
	J. Smith	11	62.50		D. Hansen	5	47.35
	D. Kangas	9	66.03		G. Meistad	3	44.12
	J. Udelhoffen	10	63.09		L. Johnson	8	40.00
	R. Maylahn	11	65.29		G. Hintz	6	51.91
7th	Ontario	40	62.21	16th	Wisconsin #2	21	51.07
	S. McLacklin	15	77.50		E. McKinney	7	52.35
	S. Hohl	10	62.21		D. Bestul	8	55.29
	T. Stroh	7	53.38		D. Bloom	4	53.68
	K. McLachlin	8	55.74		J. Haupt	2	42.94
8th	Illinois #2	40	60.92	17th	Iowa #3	21	46.21
	M. Knop	12	66.32		J. Roussel	6	52.65
	D. Peters	10	66.76		R. Holdridge	4	41.32
	H. Lange	9	54.56		D. Pitz	4	46.32
	L. Knop	9	56.03		R. Hefel	7	44.56
9th	Iowa #1	39	62.57	18th	Iowa #4	17	47.39
	G. Henton	11	65.59		B. McGregor	7	45.29
	W. Foelske	14	66.47		R. Martin	1	39.85
	B. Vandegriff	7	60.88		T. Scrima	1	46.32
	L. Grant	7	57.35		R. Brower	8	58.09

NHPA APPROVED



R. PETE DONOHO
704 State St.
Redding, CA 96001
Bus. (916) 243-5761

CAL FLIP
Stainless Steel
\$54.50 pr.
& \$ 3.00 UPS
\$57.50 Total
CA add 6% Tax

\$27.00 pr.
& \$ 3.00 UPS
\$30.00 Total
CA add 6% Tax

Guaranteed one year
Stainless Steel only
USA Pat. 288-575

Made in U.S.A.
Richmond, CA

WHY SETTLE FOR SECOND BEST?

THE ORIGINAL



OVER 27 YEARS OF
QUALITY SERVICE

213 N. BROADWAY
Milwaukee, Wisconsin 53202
(414) 224-4999
MANUFACTURERS & ENGRAVERS
One Day Service

MEMBERS OF WHPA

BEHIND THE SCENE

BEFORE AND DURING

BY SUSIE PRITZLAFF

Putting together the Team World Tournament is no small task. Initially, the many phone calls and letters to Tom Roanhouse from entrants. From there it is the many hours spent setting up a schedule, which brings into the scenario, Lenny Meistad, Jim Haupt and Ralph Dykes. Continuing on, it is Ralph's expertise in designing the scoreboards, individual schedule and score card for 72 players, gathering supplies for the statisticians.

In the final week before the tournament, it goes back to Tom to recruit scorekeepers. And once again phone calls to participants, phone calls from participants, sending letters out for publicity, preparing the court area for the constant use it will have for the three day affair.

Finally the day has arrived, hours of score-keeping by many dedicated people. The announcing by Lenny the entire weekend. The chief statistician, Ralph, is by the boards the length of the tournament, with the assistance of Curt Bestul, Susie Pritzlaff, John and Sandy Secord. The gathering of score sheets falls to Lenny also. Jim is keeping the big board up-to-date in the court area for the players, besides replacing a player in the tournament who was ill. And Tom...Tom is the congenial host who oversees all areas of this tournament.

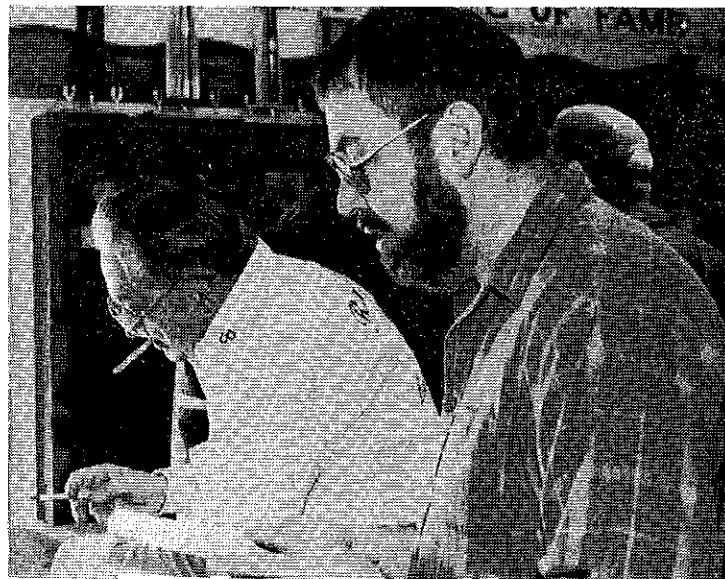
I'm sure I missed numerous other tasks. Yet, it's a great tournament, fun to be at, watching the many exciting games and the final stepladder to the championship. Visiting with the people who traveled hundreds of miles to pitch in this tournament. A tournament we reminisce about for months to come.



TOM ROANHOUSE



LENNY MEISTAD



RALPH DYKES AND JOHN SECORD



BURT TROPHIES, INC.

10885 Trophy Lane & E. 29th St.
Marshfield, Wisconsin 54449

Telephone 715 384-5839

Call or write us for all your award needs. Write for free color catalog.



DONNIE ROBERTS ANSWERS Why Join The State & Nat'l Ass'n ?

Donnie Roberts says, "Why not?"

This question has been asked many times. My response is not intended to be hostile or critical but rather informative.

All the rules that we play by were developed by the NHPA. Your state champions are officially recognized. If your state tournament was not sanctioned, you would have no official state champ.

Your sanctioned tournament winners receive patches from the NHPA.

The Los Angeles Dodgers would not be world champions if they didn't belong to the National League. Jack Nicklaus could not compete in golf tournaments if he did not join the PGA. Bowlers can't be on the TV tour if they don't join the PBA. If horseshoes didn't have the NHPA, they wouldn't have an official event, no [NEWSLINE], no world tournament, no rules, no organization, no league program, no anything. We have gotten TV, radio and newspaper coverage all around the world. We have a Hall of Fame. If we did away with the NHPA, we would have 50 states playing 50 different ways. Horseshoes would really suffer. What if we didn't control the types of horseshoes on the market?

\$7.00 [plus \$2.00 insurance] is nothing for membership. One carton of cigarettes, a 12 pack of beer, ¼ tank of gas, a trip to the bowling alley, a stop at McDonalds, or one trip across the West Virginia Turnpike are things which cost about \$7.00 [probably more]. Surely, we provide that much benefit.

One Day Service
Sales Incentives
Awards, Trophies, Plaques

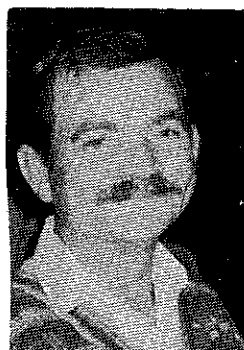
Manufacturer

RUDIG OLYMPIC AWARDS

126 S. 2nd Street
Milwaukee, WI 53204

Royce DeBow
National Sales Manager

(414) 273-2727



DICK HANSEN
WHPA
PRESIDENT

Of late I have been getting many requests for information from those that are planning on attending the World Tournament. So I dug into it once again.

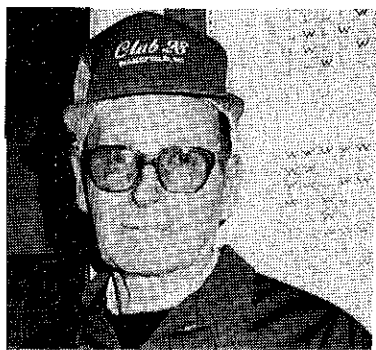
The three tournament rule sounds easy at first glance, you pitch in three sanctioned tournaments in one year (June 1, 1988 - June 1, 1989) you have all you need. The question that is now coming up is who has my sanction tournament record.

John Secord will have it if the tournament was pitched in the state. If pitched in another state that secretary may or may not have kept a record for an out of state pitcher.

I called the President of the NHPA, Dave Loucks to ask him. Who has the responsibility to keep these records that are needed to pitch in the World Tournament? Dave told me that they wanted to make the entry form as easy as possible this year. But at this time he did not have that finalized. My thinking is they will ask for the sanction number, the place and date pitched and your ringer percent in each tournament.

So my suggestion to those that will pitch in tournaments other than those on the state list, is to keep that round robin card, put the sanction number on it and have the T. D. sign your card.

The spring meeting is coming up April 15 and by then I should have seen the entry form and will have more information at that time. Items that will be coming up at this years meeting; the 1990 State tournament, last Fall no bids were taken. The bids will now come up under old business. Also, some new appointments will be made. Some of our hardest working members are asking for help and they deserve it. Its YOUR W.H.P.A.



RAY

HILL

1987 WORLD CHAMPION SENIOR PITCHER

This is a taped interview with Ray Hill, copper country drill doctor who gets better with age. We cornered Ray in the back room at the Pitchin' Palace. In amongst the mire of maintenance materials, he, in ten minutes, synopsized his horseshoe life.

"Started pitching when I was 12 or 13. Then after World War II, -this was just local, you know, back yard pitching- well after World War II, there was a period of about twenty years when I didn't pitch at all.

In the late sixties we organized a league and we've been pitching ever since." **Is that the Gifa with Mark Stevens?**

"Yes, we pitch at Gifa Center. Then I pitched in the Upper Peninsula tournaments. When I first began, I was throwing a three-quarter shoe and when I went to the tournaments, I realized that there were other turns beside the three-quarter. So I tried the one and three-quarter, and the turn 'n a quarter. I had some eighty percent games with the one and three-quarter but I was more consistent with the turn'n a quarter so I stuck with it for the last few years. I won the Upper Pensula championship..." **Was that when when you were about forty?**

"No, that was fifteen years ago. I was 54. So I pitched in U.P. tournaments. That was all dirt, you know, and not much organization to it. And I finally came down to Swen Bowman's tournament and I saw how well organized it was, you started pitching when they had told you you would and since then I haven't pitched the U.P. tournaments at all. I hardly have time if I keep up with the Wisconsin schedule. And it's so much nicer to pitch on clay."

Do you remember what year you first came to Wisconsin?

"No, I really don't."

Was it at Swen's tournament at Mountain or was it at Green Bay?

"Mountain, when he had the courts by the bar, next to the highway. Do you remember that? That would date it. The following year he went to the new courts where they have the flea market." [His wife added later, that Swen had made a trip to Wakefield to ask Ray to enter.]

"My proudest achievement in Wisconsin, is winning the Eau Claire Open three consecutive years."

That's great, with the competition you have up there. Do you like that better than winning the World Championship?

"Oh no, I'm so proud of that World's Championship and the percentage that I pitched at that World Tournament. I really enjoyed the Eau Claire World T. Pitching indoors was great. I pitch my best percentages indoors every time." **This year in California you went down to the last game with Carl Steinfeldt.**

"I won 17 out of 18 and Steinfeldt beat me. We were the last two in the class. I pitched terrible against him." **We noticed that in the results and thought maybe he psyched Ray out.**

"No, I don't feel that way because I've always done real well against the better pitchers like Dave Hughes and the Lipovsky's. And I don't know when I lost last to Red Henton."

We've noticed that for the last ten years you seem to be getting better. Do you practice more now that you're retired?

"No. Well I've been retired for twelve years and I didn't pitch for a while because I had such a bad back. But when I gave up work my back seemed to improve a little bit."

[Ray's wife, "He's so erect..."]

Well, what is your secret? Why do you keep getting better?

"It's practice. When I practice, I concentrate on only one part at a time, the turn, the arch, the alignment. You know some guys will get out there and throw and not think about what they're doing."

RAY HILL CONTINUED

All they want is ringers.

"You're so right. Ten years ago if I pitched 65% I thought I did well. Now if I don't do 70% it's disappointing."

Where were you at age 50-51?

"Then I was about a 60% pitcher. And last year was about 72-73% and this year it's 70%. The Green Bay tournament with the vicious cross wind dropped it a little." We'd like to know a little about your family.

"We have a son who works for the local paper "The Ironwood Daily Globe". He's the state editor. And we have two daughters right out of New York City, in New York. One is married and has a family and the other is single and a teacher. The other was also a teacher but she gave it up to have a family."

Did you always live in Wakefield?

"Yes, both my wife, Leona, and I were born and raised there."

OK Thanks Ray we know you want to get out there to warm up for "A" class. Good luck!

Would the Ray Hill story be complete without a contribution from his wife? We asked the pretty lady, Leona Hill these questions:

I understand you and Ray were both born in Wakefield

"Yes, right next door to each other. And then we moved just one house down the road...and that's as far as we ever got in this world."

I've never seen you, by the way, at other tournaments.

"Oh, I always come to tournaments. He enjoy's my company. And I enjoy coming because the people are so nice. They are a pleasant group of people."

Yes, they are. I think other ladies don't realize this.

"Well, if you're not interested in the game, it's not an exciting sport. As Raymond says it's about as interesting as watching paint dry. But I enjoy it. And you always meet someone new too."

What did Ray retire from?

"He was what is called a drill doctor. He repaired pneumatic tools in the copper mine. He also worked on hydraulic tools, jacks and diesel engines."

Thanks Leona, next time we see Ray we'll be looking for you too.

WHAT'S NEW

BY SUSIE PRITZLAFF

While at the Team World Tournament, I had the opportunity to see the NHPA NEWSLINE magazine. While I didn't have a chance to read it, just looking through, it appeared very well put together and the cover had a color picture of President George Bush and Vice-President Dan Quayle, very impressive.

To subscribe to the "NEWSLINE" send \$11.00 (\$12.00 if not a NHPA member) to NHPA Sec./-Treas. Donnie Roberts, Box 278, Munroe Falls, OH 44262.

The Racine Journal Times had excellent coverage for the Team World Tournament. The publicity is very much appreciated by the WHPA.

Speaking of publicity, the most noteworthy on the National TV network is Pro Bowler, Walter Ray Williams Jr.. On February 18 he was on the entire telecast of the New Orleans Open. Williams starting in fourth position bowled great advancing to the title match. He lost to Brian Voss who seemingly got all the breaks. (What, me prejudice?) In the entire hour and a half, horseshoes was mentioned many times. Also an interview with Walter Ray telling of his pitching with Vice-President Dan Quayle and President George Bush at the Ohio State Fair last year. We wish him well for 1989.

Our friends from Cedarburg, Bob and Jeanette Traber have a son, David, on the Pro Bowlers Tour. In recent weeks, David has placed 6th and 10th. We also wish him well for 1989.

The WHPA Hall of Fame committee will be selecting the 1989 inductee(s) at the Spring meeting. If you wish to nominate someone, send all the information to Chairperson, Ann Opsteen, 304 Williams St., Combined Locks, WI 54113.

DEADEYE HORSESHOES NOW

Clydesdale model "DEADEYE" Horseshoe. Drop Forged

Susie Pritzlaff

W204 N11912 Goldendale Rd.

Germantown, WI 53022

Ph. 414-628-1484

Bill Courtwright

P.O. Box 742

Fenton, MD 63026

Ph. 314-677-2200

IN THE PITS

WITH PAUL NEUMANN

Since this new year of 1989 started, I have only been in the pits once. To put it mildly, I was really in the pits on Sunday afternoon, January 15 at the Pitchin' Palace in a three county tournament. My partner, Dean Meyer and self did not help the win column for Waukesha County as we lost all ten games. By the way, Rock was the winner, followed by Washington, with Waukesha third. Enough written about that.

On Thursday, January 26, I shot two horse-shoes, both ringers by the way, in an attic. If you get the chance, check this place out. It is called the Watering Place, located just North of Green Bay at 2107 Velp Avenue. The courts are well lighted and airy with with even the skylites.

I would like to give my hats off award to some nice people which I have met through the game of horseshoes. To Don Goldsmith and his son, Jason from Janesville. To Earl Paulson from Beloit for allowing me to get a few points and to the Terry Sternberg clan, the little left-hander, his wife, and three daughters. Please to all of the others that fall into this nice-people award, your turn to be so recognized is coming in future of these columns.

Before we all start off this new season of horseshoes, I will add this to games, tournaments or otherwise.

TEN COMMANDMENTS OF SPORTS

- 1) Thou shalt not quit
- 2) Thou shall not alibi
- 3) Thou shalt not gloat over winning
- 4) Thou shalt not sulk over losing
- 5) Thou shalt not take unfair advantage
- 6) Thou shalt not ask odds thou art unwilling to give
- 7) Thou shalt always be willing to give thine opponent the benefit of the doubt
- 8) Thou shalt not underestimate an opponent or overestimate thyself
- 9) Remember that the game is the thing and he who thinks otherwise is no true sportsman
- 10) Honor the game thou playest for he who plays the game straight and hard, wins even when he loses

DOWN AND BACK

WITH JIM HAUPT

Has your club entered the **CLUB TEAM** Tournament? Deadline is March 8, tournament is March 18. So far it's Beloit, Racine Janesville, Green Bay, Goldendale, Pitchin' Palace, and Marshfield. Waiting for Fond Du Lac, Eagle, Kenosha, Combined Locks, and Platteville. 414-964-2735

* * * *

THE SPRING MEETING is set for April 15, in Wautoma. It's your WHPA and YOU are invited to hear and be heard. (or forever hold your peace)

* * * *

The last time we pitched at the U.A.W. courts in the Fall, some of the guys were talking about the new court layout, and the word CLAY was actually uttered out loud. Better cross Janesville Sand and Gravel off the possible sponsors list.

* * * *

Another Janesville type rumor is that the Moose club courts may be moving along with the Moose Club itself. The Moose and Horseshoes is a happy marriage

* * * *

In our monthly calendar this season we will include all tournaments. If yours is not on the State Schedule, please send the necessary information early.

* * * *

Thanks to Donna Yttri for Spearfish Motels and Campgrounds.

* * * *

Plans for the first annual **SWIMSUIT ISSUE** of the Wisconsin Horseshoe Newsletter have been waylaid by some feminist group. At any rate, Thanks for the dandy picture, Howie Voiles, but are shoulder straps for men back "in"?

WHPA STATE MEETING
SATURDAY, APRIL 15
1:00 P.M.
UNION STATE BANK
WAUTOMA



1989 WORLD HORSESHOE TOURNAMENT

P.O. Box 550
Spearfish, South Dakota 57783

JULY 17 - 30

SPEARFISH LODGING

CODES:

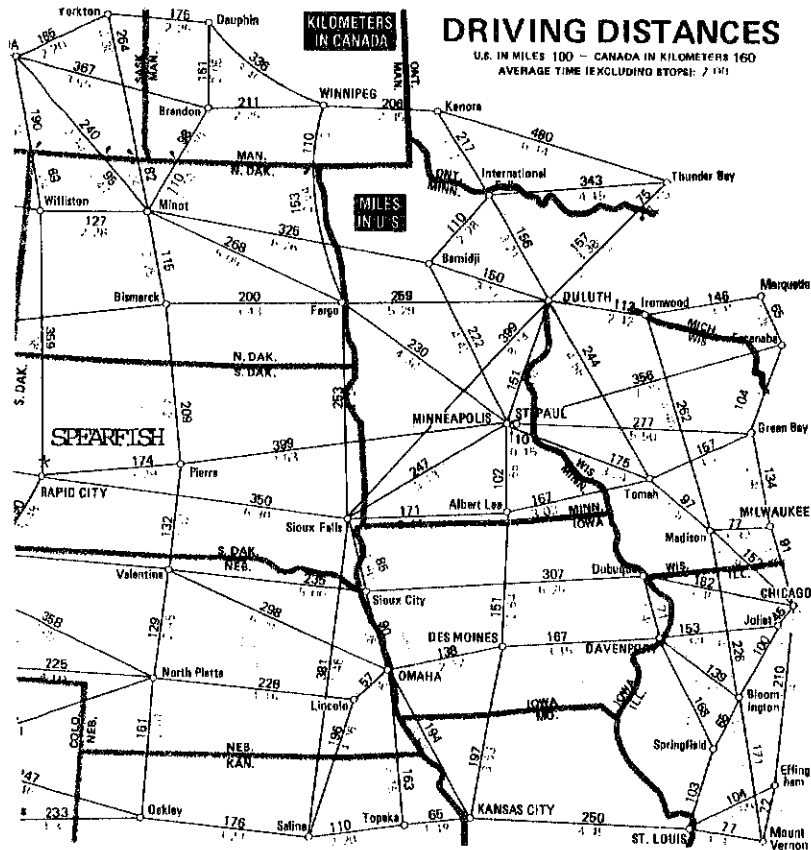
- OP- Outdoor Pool
- IP- Indoor Pool
- K- Kitchenette
- L- Launderette
- MR- Meeting Room
- J- Whirlpool, Suanas, & Hot Tub
- R- Restaurant or next door
- B- Accomodates bus tours

MOTELS

- ANTLER MOTEL 571 W Jackson 44 units (OP,J,R,B) \$32-\$46 642-5753
- BELLS MOTOR LODGE 230 Main 29 units (OP,K,B) \$26-\$44 1-800-232-7744
- CAPP MOTEL 333 W JACKSON 14 units (K) \$20-\$40 642-3611
- HOLIDAY INN I-90, EXIT 14 134 units (IP,GR,MR,J,R,B) \$59-\$72 642-4683
- HOLIDAY MOTEL 405 Main 26 UNITS \$30-\$38 642-5745
- KELLY INN I-90 exit 12 50 units (R,J,B,L,MR) 642-7795
- KOZY MOTEL 427 Main, 10 units, \$28-\$40 (R) 642-4846
- LUXURY LODGE 30 units, \$31-\$58 (R,B) 642-2728
- QUALITY INN, I-90 ext 14, 64 units \$48-\$115 (IP,L,MR,J,R,B) 642-8105
- QUEENS MOTEL, 305 Main 12 units \$32-\$48 (GR) 642-2631
- ROYAL REST MOTEL, 305 Main 21 units \$33-\$50 (OP,L,R,B) 642-3842
- SHADY PINES CABINS 514 Mason 16 units, \$20-\$50 (K) 642-4234
- SHERWOOD LODGE 231 W Jackson, 22 units \$36-\$54 (K,B) 642-4688
- SPEARFISH CANYON LODGE Hwy 14A cabins (K,GR,MR,R) \$16-\$50 584-3027
- SPEARFISH CREEK INN 430 W Kansas 26 units (OP,K,R,B) \$24-\$36 642-9941
- SUNDAN BEST WESTERN 306 W Kansas (IP,L,GR,MR,J,R,B) \$56-\$68 642-4676
- SUPER 8 MOTEL I-90, Exit 14, (IP,R,B,K,GR) \$44.88-\$56 642-4721
- Out-of-Town Member
- ALL SEASONS MOTEL 801 Upper Main St (K,L,B) \$25-\$40 578-2393
Deadwood, SD 57732

CAMPGROUNDS

- CHRIS' CAMPGROUND Christensen Dr 642-2239
100 Hookups (OP,L,GR, and an animal farm)
- KOA I-90, exit 10 642-4633
67 Hookups (OP,L,GR, and playground)
- MOUNTAIN VIEW CAMPGROUND Christensen Dr 642-2170
76 Hookups (OP,L,GR, and grocery store)
- SPEARFISH CITY PARK 440 Canyon Street 642-3744
60 Hookups and 100 Tent Sites (fishing) 642-8271



6111 MAGNOLIA DRIVE
WISCONSIN RAPIDS, WISCONSIN 54494

OFFICE: (414) 771-3750
HOME: (715) 423-4522

CHRISTOPHER J. KITTI
INVESTMENT PLANNER

Charter Investment Services, Inc.
AFFILIATED WITH CAPITAL FINANCIAL SERVICES, INC.

2323 N. MAYFAIR ROAD SUITE 502
MILWAUKEE, WISCONSIN 53226

- MUTUAL FUNDS
- CORPORATE BONDS
- CASH FLOW REAL ESTATE
- GOV'T BOND PORTFOLIOS
- TAX FREE SECURITIES
- IRA'S
- SEP-IRA'S



the
national
horseshoe pitchers
association

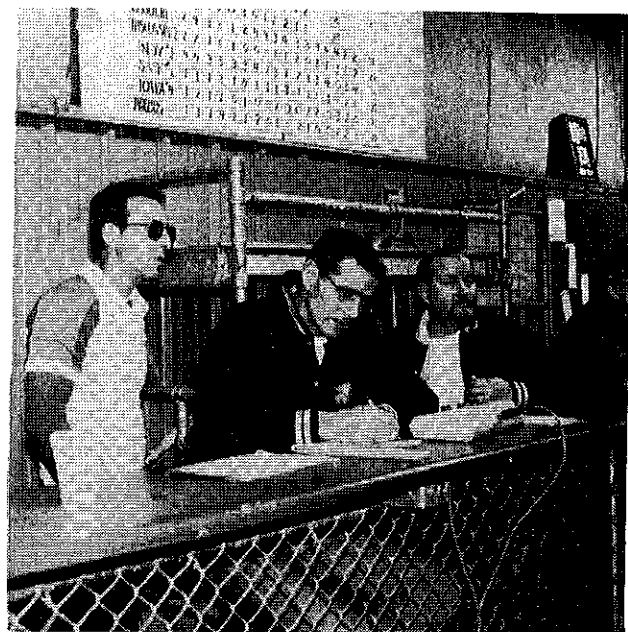
Game Related Items

wisconsin sub distributor
paul neumann
111 marcella st.
oconomowoc, wi.

53066 414 567 7001
call or send for 1988 catalog



(L-R) Alan Francis, Charley Killgore, Lou Bensinger, Sam Carter & Tom Roanhouse



Elden Sarbaugh, Charley Killgore, Oscar Manns



Steve Hohl, Tom Stroh, Kevin McLachlin



Dave Hughs & Lenny Lipovsky

TEAM
WORLD



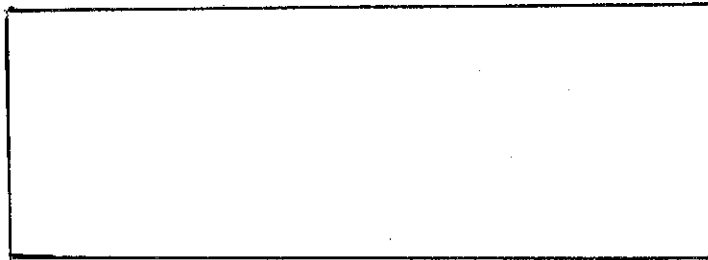
Mark, Bonnie & Curly Seibold



Debby Bestul & Phyllis Negaard

WISCONSIN HORSESHOE NEWSLETTER
W204 N11912 GOLDENDALE ROAD
GERMANTOWN, WI 53022

BULK RATE
U.S. POSTAGE
PAID
PERMIT NO. 25
GERMANTOWN, WI
53022



Off I-94 on West Frontage Road Between Hwy. 11 & Hwy. 20

The Pitchin' Palace, home of team horseshoes, will host two COUNTY TEAM tournaments this year. Interested players may contact the Pitchin' Palace for further details. Format will be determined by the number of teams entered. Open to all county teams.

For the benefit of World Tournament qualifiers, the next listed three tournaments will be NHPA SANCTIONED requiring the possession of a NHPA CARD. Card numbers are requested with entry fee. A limited number of non-cardholders will be allowed to enter on a one-time basis. Enter early to qualify.

There will be three traditional eight-person, round robin tournaments with scorekeepers provided. They are the HALL OF FAME tournament, the SPRING OPEN Tournament, and the JUNIOR SCHOLARSHIP BENEFIT tournament. Entry fee for these tournaments will be \$15 per person. Deadline is ten days prior to the respective tournament. NHPA SANCTIONED

A RINGERS ONLY tournament is scheduled for early December. For eight person classes, awards will be \$30 for first, \$20 for second, and \$10 for third. The balance of the money will be put toward user fees. Entry fee in this keep your own score tournament will be \$10. Deadline is ten days prior.

Three HOMERS, the popular doubles tournaments, will be hosted this season. Homers are round robin, 80 percent handicap tournaments. Bring your own partner. Prizes are 40% of the entry fee for first, 20% for second, and 10% for third. Registration and deadline is 12:00 noon the same day.

Send entries to the Pitchin' Palace 14000 Leetsbir Rd., Sturtevant, Wi, 53177 or for sanctioned tournaments to Tournament Director, Richard Hansen, 3085 S. 76th St., Franksville, Wi, 53126. Dick's telephone number is 414-835-1321

PITCHIN' PALACE TOURNAMENT SCHEDULE 1988-89

OCT. 15, SAT. A Homer Tournament Register; Noon
OCT. 23, Sun. A County Team Tournament
Open to your county team

Nov. 5 & 6 Sat. & Sun. Hall of Fame Open
Ceremony for Hall of Fame inductees Sunday
afternoon. NHPA SANCTIONED *****

Deadline 10 days prior

Dec. 4, Sun. Ringers Only D/L 10 days prior
Dec. 17 Sat. A Homer Tournament Register; Noon
Jan. 21 Sat. A Homer Tournament Register; Noon
Feb. 10, 11, 12, Fri., Sat. & Sun. NHPA SANCTIONED****
Pitchin' Palace Team World Tournament.

Teams from the U.S. and Canada will compete for thousands of dollars in prize money. Hopefully the top pitchers in the World will compete

Feb. 26, Sun. Another County Team Tournament
Bring your county Team

Mar. 4 & 5 Sat. & Sun. The Spring Open Singles
*****NHPA SANCTIONED*****

DEADLINE 10 DAYS PRIOR

MAR. 18, Sat. The Club Team Tournament
Wisconsin clubs bring their four top
pitchers to the Palace for a daylong
Shootout. Janesville is the defending
Champion. *****NHPA SANCTIONED*****

DEADLINE MARCH 4.

APR. 21 & 22, SAT. & SUN. The Junior Scholarship
Benefit Tournament, 8-man R.R., singles.
*****NHPA SANCTIONED*****

DEADLINE 10 DAYS PRIOR



414-886-8555

1 Hour North of Chicago
1/2 Hour South of Milwaukee

14000 LEETSBIR ROAD
STURTEVANT, WI 53177