

◆ WISCONSIN HORSESHOE NEWSLETTER ◆

Volume 10 Issue 2

JULY 1995

DICK HANSEN - HORSESHOE HONCHO IN WISCONSIN

by Jim Haupt

Dick Hansen, President of the WHPA and NHPA 5th V.P., is working his final term for the Wisconsin Association. At the Spring Meeting he announced his intentions to confine his efforts to just one horseshoe job, selecting the NHPA fifth vice-presidency.

Hansen was the resident pro' and tournament director for the Pitchin Palace administrating most of the big monthly events held there over 5 or 6 years. During that period Rick Pritzlaff approached Hansen to assume the WHPA presidency that he had owned for ten years. Many of us have known only Pritzlaff or Hansen as the head man of the WHPA.

Hansen in earlier days was a player on arguably the best four man horseshoe team in South-Eastern Wisconsin. They were all Hansen men, John the dad, Pete an uncle, Chuck a brother, and Dick himself.

Hansen became a leader, directed many area tournaments, too many to count, including the State Tournament, several times. In concert with his wife, Paulette, he introduced computer aided statistics. All these things considered, his favorite days pitching shoes stem from and relate directly to the old Hansen team.

This is the man who's been leading the Wisconsin Horseshoe Pitchers for the last eight years. In addition Hansen is serving his second term as the fifth Vice President of the NHPA. The two positions do not conflict but really compliment each other. Lately though, Hansen seems to be spending more time for the NHPA to the point where he thinks his Wisconsin job may be suffering for lack of his attention. "Besides," he speculated, "I'm running out of ideas, its time for some new ideas.

We sat down with Dick Hansen at a couple of tournaments this spring and traded swats.

When asked what it takes to be president of the WHPA, he prefaced his reply stating, "First I'd like to say that I think all the candidates, I know of, seem qualified. I've heard some will state their intentions in the Newsletter. I think they should announce their candidacy.

The hardest part (of the job) for me to do is to stand up there at the State Tournament, make the announcements and do the presentations. Running the meeting is easy because the meeting runs itself but I still get nervous (at the State Tournament) after all these years.

People shy away from being an officer because, I think, they are afraid of making mistakes. I've made my share - and I never let it bother me. Yes, don't be afraid to make a few mistakes."

Hansen further advised, "Don't attempt to run the WHPA the way *you* think it should run. You have to let the members have

enough input so that they feel they are accomplishing something when they attend the meetings. I've always tried to instill my ideas as to what it should be but I felt I never forced my ideas on anyone. I said many times at the meetings, "This is your meeting. I am just the director."

Hansen says while the WHPA formerly limited meeting discussion to matters strictly dealing with the State Tournament, we now are interested in all tournaments to some degree.

We like to have some say in ordinary club tournaments but, Hansen admitted, "I like a little diversity. You can go to different tournaments and they run classes different ways."

Do you as president have to anticipate 3 or 6 months ahead?

Hansen: "We are pretty much caught up now but when we were thinking about the Pitcher-of-the-Year award, or the Bylaw re-write, or the (WHPA) fee per tournament, I thought about that stuff for a year before I proposed it. "But (as president) your biggest job is to run the meeting and your second biggest job is fielding questions and complaints from the members. A lot of it you can't foresee."

This interviewer thinks you should be complimented for establishing a WHPA treasury. Any other mountains you recall climbing?

Hansen: "We gained non-profit status.

And although I take no credit for it, we have

mostly sanctioned tournaments now and many more sanctioned members. One thing I feel is incomplete is the Bylaws. but at least we established the three tournament requisite for next year's State."

Rumor is you are leaving office because you're afraid the state officers may be asked to take an active role in directing the State Tournament.

Hansen: "O no way. Ha-Ha, no way, I've always said the state officers should run the State Tournament., as much as possible. I've always believed it but it never materialized. The tournament directors do such a good job now. John Secord does a lot of it handling the paperwork.

The future?

Hansen: "My wish list for the WHPA would include money (awards) in the State Tournament. It never seems to get the backing when its brought up - I'll never know why. Raise the entry fee if need be. The State Tournament needs to be more prestigious. Also I've always wanted to have an awards banquet, perhaps an evening of the State Tournament."

"To the next President, I extend my best wishes, full cooperation, and this tip; try to keep an open mind.



WHPA OFFICERS

PRESIDENT

Dick Hansen
3085 S 76th St
Franksville, WI 53126
414-835-1321

SEC-TREAS

John Secord
W6868 Brown Rd
Fond du Lac, WI 54937
414-922-0080

1ST VICE PRESIDENT

Jane Smith
1481 180th Av
Balsam Lake, WI 54810
715-485-3057

2ND VICE PRESIDENT

Terry Sternberg
W206 N13520 Woodside La
Richfield, WI 53076
414-677-3300

HALL OF FAME

Susie Pritzlaff
W204 N11912 Goldendale RD
Germantown, WI 53022
414-628-1484

SCHOLARSHIP FUND

JUNIOR PROGRAM DIR
Lorraine Sternberg
W206 N13520 Woodside La
Richfield, WI 53076
414-677-3300

NHPA REGIONAL DIRECTORS

Jim Haupt Jane Smith Ken Jaeger
5075 N Elkhart Av (above) Rt 4 Knight Rd
Milwaukee, WI 53217 New London, WI 54961
414-964-2735 414-982-6287

WISCONSIN HORSESHOE NEWSLETTER

W204 N11912 Goldendale Rd
Germantown, WI 53022
414-628-1484

EDITOR/PUBLISHER
SUSIE PRITZLAFF

STAFF/WRITER
JIM HAUPT

Published 8 times annually @ \$7/year



Wisconsin Horseshoe
Pitching Subdistributors

GAME RELATED ITEMS

Elaine & Cliff Troullier
3126 Wagon Wheel Road, Manitowoc, WI 54220
(414) 682-3197

(The PAUL NEUMANN display)

WOLF RIVER RINGERS

A full compliment of forty-eight pitchers appeared on the Wolf River schedule. Ken Jaeger had to turn down some entries before the deadline. Too bad but reserved court-time was wasted when two 'A' players did not show,-up as expected. This tournament is a one man show. Once the schedule is out, Jaeger starts by cutting the grass, building the refreshment bar, stocking the kitchen, and producing two portable courts for a raffle prize. Joe Beiser, and Jaeger's brother, and one other man helped out by manning the bar for the day and Brian Repinski marked the result boards for a session while the chief cook and bottle washer was pitching. When the show was over, the director had just one laborer left for pick-up, Kathy Jaeger. We thought the man needed some help so we carried the court paraphernalia into the park maintenance building, including the infamous clothes-pin scoreboards - maybe the place will burn down.

The real treat of the Wolf River open is Jaeger's award ceremonies. All the winners are humbled or made the brunt the director's unique type of humor, usually highlighting their success with astonishment or disbelief.

Jaeger is considering prolonging this form of self torture for two days - maybe next year.

(As we put spelling checker on the foregoing lines, it wanted to change "Jaeger" to "Jaguar." We must admit , it is an interesting comparision.)

- RESULTS:
A- Randy Rein 76.0; Don Kangas 64.8; Ralph Maylahn 62.0
B- Cy Srenaski 60; Steve Wiegert 58.8; Elaine Troullier 51.6
C- Tony Scrima 51.3; C Stittleburg 49.7; Miker Hansen 48.7
D- Lori Matzdorf 40.4; Jim King 34.8; Gil Matzdorf 30.4
E- Ed Rupno 42.1; Debbie Trossen 46.8; Dick Baeten 33.2
F- Tom Dudenhoeffer 20.7 Scot Kater 28.2; C.Wozniak 26.8
Jr- Shannon Rein 38.5; Jesse Zepplin 31; Wesley Rein 29.1
WINNER of the portable courts, Wally Srenaski, subsequently sold to Cliff Troullier.

OFFICIAL ANNOUNCEMENT

I wish to publicly announce my intentions as a contender for the office of WHPA President. I have been a WHPA member since 1978 and in regular attendance at State Meetings since 1980. During that time I have also been a participant in most of the World Tournaments. I know where we have been and I know the way to go. Thanks for your confidence,
Ken Jaeger Sr

WHPA HALL OF FAME

To be eligible for nomination, a candidate must have been a WHPA member of ten (10) years.

I. PLAYER CATEGORY

- A Outstanding State & World Tournament performance.
- B State and World Tournament titles.
- C Pitching records, such as perfect game etc.
- D Sportsmanship

II. ORGANIZER/PROMOTER CATEGORY

- A Local and state promotion
- B Tournament Directors
- C State and National officers
- D State and National committee persons
- E Club and League organization

III. PLAYER/ORGANIZER CATEGORY

Candidate's accomplishments apply in both above categories.

JUNIORS

If a junior participates in the workings of the WHPA as an adult, their junior performance as well as their adult qualifications will apply for their nomination.

HALL OF FAME COMMITTEE

State officers as well as two WHPA members at large will form the Hall of Fame Committee.

NOMINATIONS SHALL BE SUBMITTED TO THE HALL OF FAME CHAIRPERSON WITH THE NOMINEE HISTORY IN *WRITTEN FORM*.

EAU CLAIRE OPEN - JUNE 10-11

by Dennis Kieser, Tournament Director

Behold. There is sunshine in Eau Claire, at least there was on Sunday, June 11. Seventy-seven pitchers were in Eau Claire over the weekend of the Open.

Saturday was cloudy with light rain and mist in the morning, but the three classes pitching from 10:00 on felt little rain. The early rain let up, the clay was in fine condition, and pitchers got started.

Sunday came with the sun shining bright and beautiful.

Congratulations are extended to all winners. Along with their choice of a trophy or cash prize they will receive a free one year subscription to the Wisconsin Horseshoe Newsletter.

RESULTS:

A- Dale Lipovsky 79.2; Clayton Gage 75.8; Tim Maule 70.6
 B- Curt Bestul 57.1; Terry Koivisto 55.1; Vince Jakel 50.6
 C- Bob Gregorich 50; Don Marx 48.6; Cliff Troullier 46.3
 D- Dave Lendowsky 39.6; Jim Heim 45.2; Ken Kosky 36.4
 E- Harold Bischel 41.1; Paul Wilson 40.9; Marv Rivard 37.1
 F- Ron Wilczek 33.1; Merrill Semington 36.6; D. Semington 34
 G- George Draeger 36; Jerome Weis 23.6; Bob Rehm 17.6
 WA- Edie McKinney 61.1; Jane Smith 65.1; Sue Helene 54.6
 WB- Ev Goshaw 39.6; Claretta Hansen 42.4; Gloria Smith 29.7
 JrA- Shannon Rein 40; Erik Bottlemy 31
 JrB- Renee Warling 25; Ricky Schaaf 17.9; Dusty Schaaf 7.1
 Ed: Haven't seen a Wis result sheet to match this. Four in Men's "A" over 70%! Women's "A" says Jane Smith is back on track.

DOWN AND BACK

with Jim Haupt

He didn't ask for any help but..

The new horseshoe made by Gus Schram of Ringle is making a hit on the courts. Jane Meier calls it the Gusto-Matic. Most pitchers think he's not quite serious but Schram has had requests to purchase. Charlie Meredith of Kentucky likes the way the 'Single' floats - has to have a pair, he says. (Personally I think it would be sure to sink.) Production is said to be slow because the foundry efficiently has the mold attached to some other casting for which there is not a great demand at present. (Maybe like horse drawn walking plows.)

My idea is really for the successor model. Once something gets going good they always make another model. The next model could look the same but be about half the weight. If it floats just a little, it would float better being lighter. Also it would save on iron. My suggestion for a name would be "The Old Duffer" model - for a sales slogan - "Pitch the 'Duffer,' it floats."

We know Schram could do it. He's spent his entire working life making revisions and little adjustments to make things better.

* * * *

Don't look for a Green Bay tournament this year. The club has decided on a June date, probably opposite the Eau Claire Open, for next year.

Debbie Trossen is considering a second tournament in Mountain for 1996 - asked about a sanction certificate and a compatible date.



Walter Ray Williams Jr.
 1995 PBA Hall Of Fame
 Inductee

Stockton, CA

Born: Oct. 6, 1959

6'-2", 195 lb.

Single

Winner of 15 PBA titles, Williams is one of just 17 players in PBA history to have won 15 or more titles. Williams won his first title in 1986 in Peoria, IL and responded with two more wins that year at Baltimore, MD and Edmond, OK. His efforts earned him the 1986 PBA Player of the Year honors. Already *well known for his six World Championships in Horseshoes*, Williams recorded one of the greatest years ever on the PBA tour in 1993 while garnering PBA Player of the Year honors once more. In all, Williams collected seven titles, finished the year with \$296,370, a near single season earnings record, marked 15 TV appearances, and 24 match-play appearances. In addition the 35-year-old righthander set new standards with a PBA average record (222.98) and games bowled (1300). One of 13 PBA members to break the \$1 million mark in career earnings, he is currently fourth on the all time money list.

PERFECT GAMES: Thirty-four

LIFETIME EARNINGS: \$1,464,539

WEATHER AFFECTS БЕЛОIT

It was only the middle of May and Beloit works their third tournament of the new season.

The Beloit Spring Singles, on the Renley Courts, unlike Telfer Park, is subject to the weather and although it was a sunny weekend, gusty winds cast a spell over many pitchers. On the far end courts one player said it was so bad at times he was aiming two feet off center. Others, dedicated to purpose, kept calling the score.

Mouse Beckius and crew have completed fencing the entire west court side. The Cyclone type barrier effectively channels players and spectators alike through a narrow opening on the clubhouse deck where Earl Paulson is selling raffle tickets or Harold Laws is selling shirts or maybe Ken Lovas and Red Ferguson are making hot dogs.

Renley Courts appear ready for Labor Day weekend and another State Tournament. Maybe they will still have some goodies left to sell.

Hottest pitcher on these and other courts has to be the Ladies State Champion, Lorraine Sternberg. Usually a slow starter, this spring she is already off to the races protecting her number one ranking portending a season to remember.

Beloit leads the WHPA in minimum wage for scorekeepers. Overall, the 75 cents per pitcher, per game has not been a deterrent to pitchers but has shown more respect for the unpopular task. However, the greater fee implies experienced markers and accurate scoresheets. The best scoremarkers are interested pitchers.

Results-

A- L Sternberg 76.5; Ralph Maylahn 66.4; Randy Rein 60.4
 B- H Romanelli 51.7; Gerri Meistad 56.0; Jane Meier 47.2
 C- D Klipstein 43.4; Tony Scrima 41.4; C Stittleburg 37.7
 D- Ralph Oliver 42.0; Terry Sternberg 37.4; Maria Willms 36.0
 E- Dave Sikorski 37.9; Red Ferguson 29.3; Jon Mease 34.3
 F- Rich Conrad 37.2; Bill Wordel 27.2; Gil Matzdorf 25.6
 G- Terry Lokken 27.8; Ron Stevens 27.5; John Gregorich 25.9
 H- John Devault 26.0; Duane Grossen 24.6; Glenn Wicklund 24.0
 I- Gary Rackow 22.3; Rob Pankhurst 17.7; Jerome Weis 19.3
 J- Pam Woodard 27.8; Dick Schoener 20.0; Pete Rockers 22.8
 K- Wayne Fry 22.3; Bob Fritz 23.7; Bob Johnson 20.3
 L- Carl Schliem 12.9; Bob Bird 21.4; Sean McLernon 13.4
 Jr A- Shannon Rein 45.7; Jr B- Josh Schlein 9.2

PLATTEVILLE IN MAY

Sunday, in all probability, may have been a nice day to pitch horseshoes but this is the Saturday report. Nice it was not. Arriving at the Legion Field courts in a driving rain, we saw the covers going down. Pitchers and scorekeepers were heading for the humid clubhouse wet to the bone. Water coursed from the roof in streams. Getting to the clubhouse door was like going through a waterfall. The mood was somber but one of relief - some of the games were done.

1:00 PM classes, on hand, cast a doubtful eye to the passing weather. LaVern Edge mentioned his courts in the machine shed

might be a better choice. With one substitute the entire "B" class formed a convoy following Edge heading out for Bunker Hill. Just a quarter-mile from Willow Branch Road is the Edge shed he calls Bunker Hill.

Two in-the-floor courts share space with Wagons and tractors but there's plenty of room in the newer 44x70 ft building. Eight-man class; no problem - alternately pitch two on each of the four pits then walk following the shoes. To accurately follow the RR cards, pits were numbered 5,6,7,& 8.

Mark Mauthe came with all the tournament paperwork, then kept double score for one of the 'double' courts, and did the result sheet for all - simultaneously. Norm Mauthe brought out all the fixin's from the kitchen, plugged in the coffee and the roast pork, set out the coolers - we had ourselves a "Bunker Hill" indoor. Edge says it was the first set of sanctioned games for the shed.

Sunday pitchers may have had the sun but we in "B" had more than our share of fun.

A Randy Rein 65.7; John Udelhofen 57.7; Mark Mauthe 51.1
 B Bob Runnas 46.4; Tony Scrima 41.4; Ron Yttri 34.3
 C C Stittleburg 41.8; Mike Menden 27.9; Jerry Schroeder 33.8
 D Teresa Donar 38.2; Harold Brockway 39.3; Frank Dunn 38.6
 E Paul Federer 30.7; Rich Conrad 25.7; Jim Brown 25.7
 F Chas McPhail 31.4; Cliff VanNatta 31.4; LaVern Flesch 18.3
 G Gary Rackow 27.7 Tom Steinke 21.9; Hank Zeisse 20.6

COMING EVENTS

JULY 14-15-16 MID-EAST OPEN; WHPA Combined Locks
 Rosemary Kamps 414-788-3229 Un-sanctioned; Under cover
JULY 24 thru AUG 5 WORLD TOURNAMENT - Perry, GA
JULY 29-30 KEWASKUM OPEN; WHPA see flyer ad
 Rob Struebing 414-626-2018 Request Sunday for poss. sanction
JULY 31 ENTRY DEADLINE - STATE TOURNAMENT
AUG 4-5-6 EAGLE OPEN; Eagle, Village Park D/L 7-21
 Al Salmela 414-594-2431 Un-sanctioned Limited
AUG 12-13 SOUTHERN WIS OPEN; Beloit WHPA D/L 8-1
 Earl Paulson 608-879-2304 NHPA sanc #28-95-019
AUG 12 -13 MOUNTAIN OPEN; WHPA D/L 7-15
 Debbie Trossen 715-276-6041 Un-sanctioned
AUG 19-20 PLATTEVILLE OPEN; WHPA D/L 8-4
 Norm Mauthe 608-348-9697 NHPA sanc #28-95-020
AUG 19 SKIN'S OPEN WHPA; FDL Unsanctioned D/L 8-6
AUG 20 FOND DU LAC OPEN; NHPA sanc #28 -95-022
 Jeff Secord 414-922-9698 may enter one or both days
AUG 19 NO WIS CHAMPIONSHIP NHPA sanc #28-95-021
AUG 20 FOUR PLAYER TEAM TOURNEY; both Marengo
 Steve Stevens 715-278-3473 may enter one or both days D/L 8-6
AUG 26 LOYAL CORNFEST WHPA D/L 8-14
 Greg Bottlemey 715-267-6417 NHPA sanc #28-995-023
SEPT 2-3-4 WHPA STATE TOURNAMENT; Beloit
 John Secord 414-922-0080 entry deadline July 31

For complete information see Official WHPA Schedule or flyer ad. From time to time this newsletter may list events and dates other than WHPA scheduled tournaments. Write for listing

THE 24TH GOLDENDALE TOURNAMENT

The courts out behind the barn built by Ed Wing 24 years past have served for one more tournament. A few club members who helped build the courts recall when the trees that now overwhelm were only saplings.

Players, who may at times curse the trees, also seek their relief from the mid-day sun. Yes, it was another warm, but dry, June weekend this year in the Goldendale woods.

Classes were scheduled beginning Friday evening. All seven courts were in use most of the time with combinations of seven and eight person classes - near one hundred entries dictated creative scheduling and elimination of play-off games.

For a change, the Class A Ladies took the prime time Sunday afternoon spot while the "A" Men did their thing Saturday Noon. Hey, O.K. The guys had a free Sunday, but it raised havoc in the kitchen. Sunday was a bad bratwurst day. The price dropped to a buck each. Finally they were sold by the box. The Goldendale Open probably entertains the top ladies class prior to the State Tournament but to draw spectators they need to be scheduled same day as Class A Men.

Club membership at Goldendale is down the equivalent of two leagues; yet the dedicated few worked longer hours to keep the event moving. Two non-pitching members, Karen and Jeff Haak did all the kitchen work with the help of other non-league members, Joanne Wing and Harold and Dolly Kloehn.

* * * *

This year a week following Labor Day the Goldendale Club will host a non-sanctioned, bring your own partner, doubles tournament. Aiming for local pitchers, entering teams will be allowed as a maximum, one NHPA card per team. The Saturday only tournament will have a limit and preference will be shown to unsanctioned pitchers and naturally club members.

8th KEWASKUM HORSESHOE OPEN

Jul 29 & 30, 1995
Kewaskum Kiwanis Park

Men and Women: \$14.00 entry.
50 shoe cancellation.
Cash Awards only.

Juniors: No entry fee- 1st (& 2nd) place trophy, depending on class size.

90% of the entry fee remains in class.
Entry fee includes scoremarking.

Limited to first 120 entries.

Some classes may be mixed depending on number of entries.

Over 70, allowed to pitch at 30 feet +.

Deadline: July 15, 1995

Entry to: Rob Struebing
8893 Fairview Dr.
Campbellsport, WI 53010

A				H			
a1	Randy	Rein	67.5	h1	Tom	Steinke	25.83
a2	Don	Kangas	71.43	h2	Hank	Zeisse	24.58
a3	Ralph	Maylahn	61.43	h3	Bob	Traber	26.66
a4	Gus	Schram	60	h4	Archie	Johnson	23.33
a5	John	Koepp	56.43	h5	Tom	Costa	15.16
a6	Mark	Mauthe	50.71	h6	Ron	Sabish Sr	23.38
a7	Brian	Repinski	54.64	h7	Wayne	Franzen	20
a8	Jim	Larson	46.07	I			
B				i1	Frank	Schalk	24.59
b1	Mer	Sorensen	62.14	i2	Richard	Burg	18.33
b2	Emmett	Whiting	56.42	i3	Scot	Kater	22.54
b3	Ken	Jaeger	53.21	i4	George	Siira	16.25
b4	Jeff	Secord	59.28	i5	Bob	Fritz	19.58
b5	Gerald	Weikert	52.5	i6	Ken	Hannula	13.75
b6	Dennis	Ambuehl	48.57	i7	Don	Peterson	14.58
b7	John	Barden	48.57	J			
b8	Tony	Scrima	44.64	J-1	Guy	Fleming	25
C				j2	Karl	Wegner	15.83
c1	Jim	Haupt	53.33	j3	Steve	Guetzke	12.5
c2	Richard	Hansen	43.33	j4	Jerry	York	12.08
c3	Felix	Kubly	46.25	j5	Larry	Unz	9.16
c4	Ken	Heinritz	43.75	j6	Kevin	Hauring	6.66
c5	Rick	Pritzlaff	43.75	j7	Duane	Checky	4.58
c6	Glenn	Bogenschneid	42.5	Jr			
c7	Julian	Tijerina	41.66	jr1	Penny	Steinke	54.5
D				jr2	Lee	McFarlane	28
D-1	Wes	Taylor	42.85	jr3	Chris	Sabish	24
D-2	John	Secord	37.14	jr4	Paul	Fricano	22.5
d3	Terry	Sternberg	40.35	jr5	Tom	Costa	9.5
d4	Ken	Kosky	36.42	jr6	Charles	Costa	4.5
d5	Cliff	Troullier	40.71	L-A			
d6	Gene	Mason	38.92	LA-1	Lorraine	Sternberg	73.21
d7	Red	Ferguson	36.07	la2	Pam	Steinke	65
d8	Ken	Davison	28.21	la3	Geri	Meistad	58.57
E				la4	Cy	Srenaski	48.92
e1	Rich	Conrad	38	la5	Jane	Meier	46.07
e2	Warren	Knippel	32.8	la6	Ann	Opsteen	50
e3	Ron	Willms	30.8	la7	Heldi	Sternberg	40.35
e4	David	Aho	27.6	LB			
e5	Gerald	Gromowski	38	lb1	Carolyn	Stittleburg	52.5
e6	Bill	Fuerst	25.2	lb2	Heather	Sternberg	45.83
F				lb3	Elaine	Troullier	50.41
f1	Mel	Sorensen	36.07	lb4	Carla	McFarlane	34.16
f2	Jim	Poquette	32.14	lb5	Maria	Willms	37.08
f3	Harold	Laws	29.64	lb6	Renee	Sternberg	34.58
f4	Gil	Matzdorf	29.64	lb7	Lori	Matzdorf	35.83
f5	Hal	Muma	27.85	L-C			
f6	Larry	McCutcheon	27.5	lc1	Darlene	Sabish	42.5
f7	Bill	Mathey	28.21	lc2	Christen	Tashoff	25
f8	Donny	Burmeister	23.57	lc3	Gwen	Unz	13.13
G				lc4	Joan	Struebing	25
g1	Wally	Srenaski	32.28	lc5	Ceil	Trossen	15
g2	Emil	Blair	31.6				
g3	Bob	Traber	30.8				
g4	Bob	Kabella	29.6				
g5	Rob	Struebing	26.77				

Pitcher of the Year

by Jane Smith 6/28/95

After 17 tournament results have been recorded, the **Pitcher of the Year** standings are listed. I still need results from Tournaments in 1994. Tournament directors have to get these results to me so all pitchers can be included in the contest. Tournaments missing results are; Loyal Cornfest, Wausau Open, Arena Fall Singles - all 1994 tournaments. Missing in 1995 are; Spring Meeting, Arena Open, Beloit Spring Singles. Tournament directors with tournaments in June and July of 1995, please get your results to me ASAP so I can determine a winner by the State Tournament. Thank you directors, who have been so quick to respond with results. Have a great horseshoe pitching season!

Lorraine Sternberg	90 pts	Tony Scrima	60 pts
Randy Rein	90 pts	Penny Steinke	60 pts
Clayton Gage	80 pts	Curt Bestul	60 pts
Ralph Maylahn	70 pts	Edie McKinney	55 pts
Ron Wilczek	65 pts	Shannon Rein	55 pts

1995 MUSKEGO OPEN

by Tom Steinke, Tournament Director

Unlike the Muskego Doubles tournament, at this singles tournament everybody was hot and *sunburned*.

There were two play-offs this year. In a close game, Tom Steinke finally beat Hank Zeisse, while in "C" class Jim Haupt lost to Dick Hansen. Haupt had little chance as Hansen was later announced as being one of the winningest pitchers over the years on the Muskego Moose Courts.

Class A has a new champ this year, Gus Schram, who got the ringers when he needed them. Someone said it was the new shoes: The Gust-o-Matics (or the Ringle Single).

Some pitchers waited for this tournament to reinstate their NHPA cards including nine first time NHPA members.

And there were some old timers like Mike McDonald back living in Union Grove after a lengthy job assignment out West. Hansen, possibly looking for another win, is said to have paid for McDonald's card. Now that you are one of us Mike McDonald, grab those Ohio's and make some more tournaments.

Welcome back to tournaments Emmett Whiting but say so long class B if you continue pitching like this one.

RESULTS:

- A- Gus Schram 57.5; Lorraine Sternberg 72.1; Brian Repinski 60
 B- Emmet Whiting 60; Greg Bottlemey 54.6; Tony Scrima 41.4
 C- Dick Hansen 46.3; Jim Haupt 42.8; Glenn Bogenschneider 38.9
 D- Larry McCutcheon 38.8; Ron Willms 37.5; Maria Willms 38.8
 E- Carla McFarlane 42.9; Harold Muma 36.4; To Cutts 32.9
 F- Terry Lokken 37.1; Frank Look 24.3; Norm Beckius 28.9
 G- Tom Steinke 27.8; Hank Zeisse 26.5; Cathy Horn 26.1

SKIN'S OPEN SATURDAY
AUG 19 UNSANCTIONED
 ENTRY FEE \$11

F.D.L. OPEN SUNDAY
AUG 20 SANCTIONED
 ENTRY FEE \$14

TWO EVENTS - SAME DEADLINE
8-6-95

MAY ENTER ONE OR BOTH
SPECIFY WHICH EVENT ENTERING
TO:

Jeff Secord N6337 Gardenia
Fond du Lac, WI 54935
414-922-9698

HEART OF THE VALLEY VFW POST 10544

11TH ANNUAL DOUBLES TEAM

HORSESHOE TOURNAMENT

SEPTEMBER 8 -9- 10, 1995
AT**KAMPS COVERED KOURTS**303 Williams Street
Combined Locks, WI 54113MENS AND LADIES DIVISIONS
MIXED COUPLES DIVISION
(If Enough Interest)**CASH PRIZES FOR ALL CLASSES**Please Send Ringer % on 100 Shoes
Plus League Handicap

ENTRY FEE \$25 PER TEAM

ALL ENTRIES MUST BE RECEIVED
BY AUGUST 31, 1995
Food and Refreshments Available at CourtSend Entries to:
Ken Wood
616 Park Street
Combined Locks, WI 54113
(414) 788-2617

THE 1995 STATE TOURNAMENT

The Beloit Horseshoe Club will host the 73rd State Tournament this Labor Day weekend at Renley's Courts.

The late Bud Renley, then Club President, was head engineer and walking boss when the court layout was conceived and constructed. To this day his counterpart, and now president, Norm (the Mouse) Beckius leads the crew in completing the latest construction phases.

Each year, as the club can fund it, new embellishments are added. The place would be better named, Renley Park. Construction plans for the compound seem indefinite, without end. The clubhouse may seem small to the eye but its really just short. From the obvious headroom it appears the building may grow to accomodate indoor pitching. Thirteen courts consume most of the property owned by the club but it so happens a club member owns the adjoining undeveloped property. Possibilities are endless.

Three dollars of each State Tournament entry fee is earmarked for the benefit of the host club. The stipend was originated as an incentive when State Tournament bids were not coming in as anticipated.

Beloit is one club that can well use the extra funds.

Scorekeeping is included in entry fees and regulated to be at least fifty cents per pitcher per game but the going rate in Beloit has gone to seventy-five cents.

Trophies are provided by the host from entry fees, The entry fees are set by the host to cover costs. Some of the costs include ; publishing the entry form ,(Its not free) Providing and mailing schedules, paying the normal WHPA tournament fee, and publishing the results (that's not free either).

Shirts; If you see the shirt rule too often, please recall the times you have seen a pitcher who did not get the word.

State tournament Pitchers *must* wear a shirt personalized with their name neatly displayed on the back. Its the rule for a couple of reasons, one is for identification and the other is to satisfy the "I want you to be like me" syndrome that most horseshoe pitchers suffer from.

Next Year the State Tournament will be held at Eau Claire's Carson Park but hosted by a club located ninety miles north. That was worked out at a State Meeting almost a year ago. If you want the State at your club of place of choice, plans to make the offer must be made more than a year prior and you must have previously demonstrated that your club has experience conducting tournaments.

"Everything You Need Under One Roof"

- Spacious Rooms
- Heated Outdoor Pool
- Country Kitchen Restaurant
- Banquet Facilities
- Cocktail Lounge
- Cable TV with HBO



2956 Milwaukee Road
 Beloit - I-90 at Hwy. 81 (Exit 185A)
 1-608-364-4000 1-800-424-4777

WELCOME BACK

AND

GOOD-LUCK

FROM ALL OF US

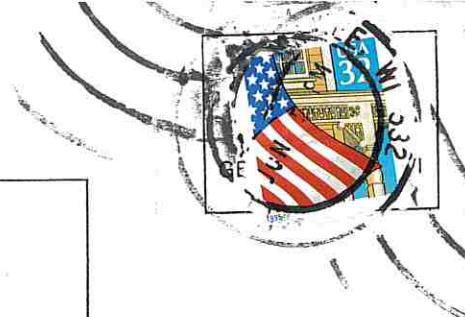
AT

TOBASCO TAVERN

365-9999

NEXT DOOR TO BELOIT HORSESHOE CLUB

WISCONSIN HORSESHOE NEWSLETTER
W204 N11912 GOLDENDALE RD
GERMANTOWN, WI 53022



99/9C
Jim Haupt
5075 N Elkhart Av
Milwaukee, WI 53217

SEPT 2-3-4, 1995 SANC #28-95-024
WISCONSIN HORSESHOE PITCHERS ASSOCIATION
WIS STATE CHAMPIONSHIP TOURNAMENT
HOSTED BY THE BELOIT HORSESHOE CLUB AT BELOIT, WI

All registrations must be dated and postmarked by **July 31, 1995**. You must have competed in a minimum of two NHPA sanctioned tournaments on the Wisconsin State schedule between **August 1, 1994—July 31, 1995**. NHPA sanctioned league may be used as one only if you do not have the required two tournaments. 30-foot ELDER MEN and JUNIORS do not need to meet the two tournament rule. If you competed in only two tournaments, please list them.

NAME OF EVENT	DATE OF EVENT	SANCTION LEAGUE
1. _____	_____	_____ %
2. _____	_____	_____

You can play in only one division.

PLEASE CIRCLE THE DIVISION YOU ARE ENTERING

MENS ELDER WOMENS JUNIOR BOYS JUNIOR GIRLS
40 FT 30 FT

NAME _____ 1995 NHPA CARD # _____

ADDRESS _____ DATE _____

CITY/STATE _____ ZIP _____ PHONE (____) _____

Everyone registering for this tournament must have a current NHPA membership card.

If you do not have a 1995 card include another \$19.00.

Registration fee must be included with entry form.

REGISTRATION FEES ADULTS - \$18.00 JUNIORS FREE

DEADLINE JULY 31 — MAIL REGISTRATION & FEES TO;

JOHN SECORD - WHPA SEC-TREAS.
W6868 BROWN RD
FOND DU LAC, WI 54937