

## WORLD TOURNAMENT BILOXI, MISSISSIPPI

The 1991 World Champions are Walter Ray Williams Jr., CA who went undefeated with a 86.1 ringer percentage and Tari Powell, IL, with one loss, 83.1%. The Junior Girl Champion is Celeste Polak, TX, 74.1%, Jubior Boys, Jim Walters, OH, 84.8%. Senior Women, Marge Spray, FL, 65.7% and Men, Carl Steinfeldt, FL, 72.7%. Intermediate Men, Ed Arionus, TX, 70.3%, 40 Foot Elder Men, Willard Napier, CA, 66.3%, 30 Foot Elder Men, Russ Lobuzzetta, FL, 65.2%.

Biloxi, hot and humid, inside the Coliseum, cool and comfortable in the air-conditioned huge facility. For the spectators, it was great, cushioned chair seats and if you had binoculars you could see the scoreboards all over. It was different than other W.T.'s, it seemed to lack the camaraderie of a lot of people in one area. The vastness of the coliseum made it seem like there weren't many people there.

The player's complaints...you always hear about lost ringers but for everyone that was the complaint. Whatever the problem, the NHPA owned portable courts are in need of a better base for the stake. The absence of a shoe wheel on the scoreboards

was hard to believe. Most of the games were 40 shoes except the championship groups. Overall the players enjoyed the climate controlled facility.

There were 1023 entrants in the W. T. Wisconsin ranked fifth with 60 entries. I have information that 25 WI pitchers received trophies and cash awards, 41%, which is great. If I missed someone, let me know.

Notable among them was the Steinke family from Waukesha. Tom and his two daughters, Pam and Penny all took first in their class. Another hi-lite was Jane Meier, from Fond du Lac, she placed first in her scheduled class pitching 45.2%. From there her average made her eligible for the championship women's pre-lims. In that round Meier had 49.7%. She then was placed in the B-1 group where Jane took third with 53.8%. Coming away with two trophies and two cash awards. For the \$50.00 entry fee, she did real well.

Other Wisconsin trophy and cash winners:  
 CHAMPIONSHIP GROUPS, Women - Jane Smith 14th, 2-13, 64.1%; Junior Girls - Heidi Sternberg, 2-5, 52.4%; Junior Boys - Mark Mauthe, 6th, 6-5, 61.6%, David Carley, 12th, 0-11,

CONTINUED ON PAGE 5

### CHAMPIONSHIP

### WOMEN

### PRELIMINARIES

Making it to the Championship preliminaries are these Wisconsin pitchers.

Top row from left to right is, Edi McKinney, Suzanne Helene, Jane Smith, Joan Guetzke, Gerri Meistad, Debby Bestul, Bottom row, left to right, Lorraine Sternberg, Jane Meier, Ida Hostrup and Teresa Donar.



**WHPA OFFICERS**

**PRESIDENT**

Richard Hansen  
3085 S. 76th ST.  
Franksville, WI 53126  
414-835-1321

**SECRETARY-TREASURER**

John Secord  
W 6868 Brown Rd.  
Fond du Lac, WI 54935  
414-922-0080

**1ST VICE PRESIDENT**

Jane Smith  
R. Rt. Box 17  
Balsam Lake, WI 54810  
715-485-3057

**2ND VICE PRESIDENT**

Curt Bestul  
1412 Sherwin Ave.  
Eau Claire, WI 54701  
715-832-3603

**HALL OF FAME**

Ann Opsteen  
304 Williams St.  
Combined Locks, WI 54113  
414-788-1202

**SCHOLARSHIP FUND**

JUNIOR PROGRAM DIRECTOR  
Lorraine Sternberg  
W206 N13520 Woodside Ln.  
Richfield, WI 53076  
414-677-3300

**NHPA REGIONAL DIRECTORS**

Jim Haupt  
5075 N. Elkhart Ave.  
Milwaukee, WI 53217  
414-964-2735

Ken Jaeger  
Rt. 4 Knight Rd.  
New London, WI 54961  
414-982-6287

Jane Smith  
R. Rt. Box 17  
Balsam Lake, WI 54810  
715-485-3057

**WISCONSIN HORSESHOE NEWSLETTER**

W204 N11912 Goldendale Rd.  
Germantown, WI 53022  
414-628-1484

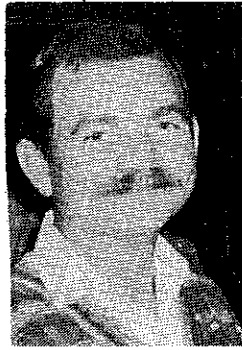
**EDITOR / PUBLISHER**

Susie Pritzlaff

**STAFF / WRITER**

Jim Haupt

Published eight times annually @ \$6.00 / yr.



**DICK HANSEN  
WHPA  
PRESIDENT**

A date has been set for the Fall WHPA State Meeting. As you may or may not remember there will be NO meeting at this year's State Tournament. The Fall meeting will be held in Plover at the Royal Wood Sport Center starting at 1:00 P.M. on Saturday, October 26th. An agenda will be given out at that meeting. Some items of interest that I plan on bringing up at that time can be found in the rest of this letter.

Number one is the point system that I'm now using for the Pitcher of the Year Award. I would like to see more points given to those tournaments that are NHPA sanctioned or use only those that are NHPA sanctioned. My reason of asking for this is two-fold. 1. With the number of tournaments on our list that are not NHPA sanctioned it is possible for a non-member to win this award, not likely but possible. 2. Adding more weight to sanctioned events could bring more pitchers

CONTINUED PAGE 4



**AT THE W.T.**

**JUNIORS**

**FROM**

**WISCONSIN**

From left to right, Pam Steinke, Mark Mauthe, Heather Sternberg, David Carley, Heidi Sternberg and Penny Steinke.



## NHPA CONVENTION

BY SUSIE PRITZLAFF

A resolution for a \$3.00 per year increase for adult NHPA membership to be used for the championship prize fund for the World Tournament passed by a vote of 260-82. Wisconsin delegates voted no to this resolution. Before coming to the convention they asked members their opinion and most were against it.

At the 1990 World Tournament in Georgia there was a shortfall of over \$34,000 as Georgia did not have their bid money. The delegates voted at that time to make up the difference, it wasn't fair to the players to come to Georgia after a prize list was published only to find out there wasn't any money to provide for it. Georgia had assured the NHPA Council in January of 1990 that they would have the full amount of the bid money.

In the past year the NHPA has been in contact with the two principal officers at the time the contract was signed by the Georgia Association to try and acquire the lost funds. There had been some minor payments, mentioned was \$1200. They decided to file a lawsuit after receiving advice from council.

One of the men named in the lawsuit spoke at the convention to ask the delegates to dismiss the lawsuit against them. They would try to make yearly payments toward their debt to the NHPA. There was a lot of discussion on this pro and con. Delegates voted 180-160 not to drop the lawsuit. This is where Wisconsin split their votes.

After the \$3.00 increase in dues was passed, the lawsuit was brought up again with more pleas from Georgia and other people. Another vote was taken. This time they voted 207-127 to dismiss the lawsuit.

Now for the realistic side of this \$3.00 increase in NHPA dues:

The Georgia shortfall was a blow to the NHPA.

There were no bids for a 1993 World Tournament site at the convention this year.

Presumably, \$40,000, the minimum W. T. bid is too high for charters to raise.

### Solution:

The \$3.00 increase in NHPA dues will assure a prize fund for the W. T.

A minimum bid of \$15,000, plus trophies, will be a lot easier for charters to raise.

Where are we going in 1993? The NHPA Council announced they will take bids of minimum \$15,000 plus trophies until the end of August. Thereafter a decision will be made by them on where the W. T. will be in 1993. We heard there were a few states interested, South Dakota, Alabama and Virginia.

EDITOR'S COMMENT: In Wisconsin each State Tournament entrant pays \$3.00 to the host club. This is included in your entry fee. You may conclude we are and have been paying \$3.00 to enhance ourselves to a host club.

For now the \$3.00 NHPA dues increase will solve the problem as the \$3.00 fee to the State Tournament host club did a few years back for the WHPA when we did not have a bid for our S. T.

It makes me wonder, our membership is increasing, is our worth decreasing? Are we selling ourselves too short?



CARLA MCFARLANE AT THE WORLD TOURNAMENT

## PRESIDENT'S LETTER CONTINUED

and most of all, more NHPA sanctioned tournaments. Right now all tournaments are, 1st, 13 points, 2nd, 8, 3rd, 6, all others 3, with the points doubled at State. Change this to State, 26, 16, 12 and 6, NHPA, 20, 12, 8, and 5 with all the others the same as before. If you are still with me and not totally confused, great, if you are, come to the meeting, maybe I can explain it there in more detail.

Number 2 has to do with this year's NHPA Convention. Of the conventions that I have been a delegate, this one was by far the most emotional. We had many sensitive and troubling matters to vote on. In prior years, as we did this year, we would sit down before hand and go over all the items on the agenda so we could cast all our votes the same. In doing this we are not voting against ourselves. It has worked very well for us in the past. The problem is that when an issue as tough as we had this year comes to the floor of the convention for a vote, you have very little time to decide how we should cast our votes. We had to end up splitting our vote. Be you for or against, what we did was the same as not voting at all. At the time I was thankful that we had all 11 delegates present, for if there were say, only 8 of us there, who would be in control of the other 3 votes. Do I as spokesman? Do we all? Do we not use them? Therefore, what we need is a vote from the floor as to how the WHPA would like us to vote at conventions in forth coming years. I expect this may take some time at the meeting for I know there are some strong views on this and I respect them both. We are however in need of a written guide line. The state meeting is the place to get it done.

## DOWN AND BACK

BY JIM HAUPT

Jerry Schroeder of Janesville said he visited Sid Anderson in the hospital. - That's why we haven't seen him lately. Hope you can shake this thing soon Sid. We're waiting to see you as top seed again.

\* \* \* \*

Have heard no new word on former 'Pitcher of the Year', Bob Jackson. He's been having serious back problems. Trouble is, we have also lost his other half, Faith (Jackson). Tell us this is just temporary, you Jacksons.

\* \* \* \*

Regretfully we have heard that Harley Wickingson passed away some months ago. Aside from being a self-proclaimed class A pitcher back in 1929, he was always a class A gentleman of all time. Entertaining the ladies was his enjoyable pastime. Wonder if they allow harmonicas in heaven. "Got a little chicken with a wooden leg, built her nest in a blueberry keg. Best little chicken on the whole darn farm...

Who the heck started the wearin' of the whites for horseshoe tournaments?

I'm willing to bet it was before the invention of double dip chocolate ice cream cones. And certainly those juicy beef barbeques were unheard of. Think I'll look into a splashy camo outfit - maybe call it Rocky-Road with Oreo crunchies. Real-Neopolitan?

Kevin Brekke has some friends on the Stevens Point Park Commission. They are renewing three of the eight courts in Mead Park. Provisions for thirty-footers are of prime concern. Sand pits, for now, will be replaced with clay if enough pitchers show interest.

6111 Magnolia Drive  
Wisconsin Rapids, Wisconsin 54494

OFFICE: (414) 771-3750  
HOME: (414) 423-4522

**CHRISTOPHER J. KITTI**  
INVESTMENT PLANNER

 **Charter Investment Services, Inc.**

AFFILIATED WITH CAPITAL FINANCIAL SERVICES, INC.

2323 N. MAYFAIR ROAD, SUITE 502  
MILWAUKEE, WISCONSIN 53226

**Stocks, Bonds, Mutual Funds,  
Government Securities, Money Markets  
TAX FREE SECURITIES  
Complete Financial Planning**

One Day Service  
Sales Incentives  
Awards, Trophies, Plaques

Manufacturer

**RUDIG OLYMPIC AWARDS**

126 S. 2nd Street  
Milwaukee, WI 53204

Royce DeBow  
National Sales Manager

(414) 273-2727

**WORLD TOURNAMENT TROPHY WINNERS**

35.6%; Senior Women - 2nd Cyrena Srenaski, 4-1, 51.7%; Elder Mens 40 Foot - 3rd, Ralph Maylahn, 3-2, 63.2%

Women, B-1, Jane Meier, 3rd, 8-3, 53.8%, A-2, Joan Guetzke, 3rd, 7-4, 53.4%; C-2, Ida Hostrup, 3rd, 8-4, 39.7%; D-1, Tera Donar, 1st, 10-2, 44.5%; F-1, Jane Meier, 1st, 11-0, 45.2%; Senior Women - Group A, Carla McFarlane, 2nd, 6-2, 35.3%; Intermediate Men - Group A, Wally Srenaski, 1st, 7-2, 50.5.

Junior Girls - Group A, Pam Steinke, 1st 7-0, 47.5%; Group B, Penny Steinke, 1st, 13-0, 25.0

Men - B-1, Randy Rein, 1st, 9-3, 62.2%; B-3, Norm Mauthe, 3rd, 7-4, 59.3%; C-2, Bill Schaff, 3rd, 8-3, 52.0; C-3, Brian Repinski, 1st, 9-2, 59.7%; E-3, Ken Jaeger, 3rd, 7-4, 43.4%; I-1, Tom Hansen, 1st, 9-3, 45.0%; J-3, Ken Davison, 2nd, 38.0%; M-1, Russel Burns, 2nd, 8-3, 39.0%; P-2, Tom Steinke, 1st, 9-3, 28.3%; Q-1, Ralph Zeisse, 9-2, 16.5%.

**MARSHFIELD RESULTS**

Sunday; NHPA sanctioned #28-91-009

<u>CLASS A</u>		<u>CLASS B</u>	
Mark Stevens	63.4	Richard Pichler	58.3
Jane Smith	63.1	Larry Barber	53.4
<u>CLASS C</u>		<u>CLASS D</u>	
Randy Bestul	53.1	Elaine Troullier	46.9
Sylvia David	43.7	Cliff Troullier	48.0
<u>CLASS E</u>		<u>CLASS F</u>	
Ralph Marthaler	45.7	Bill Floryance	42.3
Dennis Bach	41.7	John Schultz	38.8
<u>CLASS G</u>		<u>CLASS H</u>	
Bob Irwin CA	32.9	Jason Hertel	47.4
Kathy Hansen	36.6	Kevin Jevne	31.7
<u>CLASS I</u>		<u>CLASS J</u>	
Jerry Zahn	29.4	Lori Brekke	16.7
Tara Schultz	26.6	John Van Dyke	21.0
<u>JUNIORS CLASS B</u>		<u>JUNIORS CLASS A</u>	
Sara Harriman	2.5	Justin Topper	35.7
Jesse Zepplin	2.5	Charlie Topper	30.3

**STATE TOURNAMENT**

**CLUB CHAMPIONSHIP**

BY JANE SMITH

Clubs that would like to enter the State Tournament Club Championship can send their roster to me by August 31 or you may give it to me at Fond du Lac. You must have a minimum of 5 pitchers. The entry fee is \$7.50 and the award will be given out at the Fall meeting.

**LETTER**

Dear Sir:

I really enjoyed your article on Bill Glass. I met him the first time in 1967 at Jerry Kamps Courts in Combined Locks. He played for the Championship against Tommy Bartlen. If I remember right, Tommy just edged Bill out.

Bill was playing in Florida for a short time. He won over a lot of the guys in Florida according to the old Horseshoe Digest. Keep up the good work.

Al Spang, Shawano



**WALTER  
RAY**

**WILLIAMS JR.**

Walter Ray Williams Jr. was bowling in a Pro tournament in Wichita, Kansas the week before he came to Biloxi for the World Tournament. After the 18 games of qualifying Williams was in second place, averaging 222. On Thursday night before match play began he withdrew which placed the 25th bowler up to the match play. He cashed and whatever the bowler who replaced him made, Walter Ray would get half of that. He knew before he entered the tournament that he would have to leave at that time to make it to Biloxi for the championship pre-lims. The Profession Bowlers Association also knew his intentions. Because he did bowl his way to the match play, he also was fined \$100 by the PBA for withdrawing which is an automatic fine on the Pro Tour. He was quoted as saying, "Even if this was the Firestone Tournament of Champions, I still would be leaving. That's just how important horseshoes are to me."

After the horseshoe tournament was over, Walter Ray said, "The main thing was that I needed to win here so the guys on the tour wouldn't be ribbing me about it. If I had come down here and not won they would have been saying, You idiot, you pulled out of Wichita and didn't even win the horseshoes!"

NEWSLINE

# President's Message

Recent issues affecting past, present and future World Tournaments are cause for the NHPA membership to take a very serious look at how we fund these events. The unfortunate circumstances surrounding the short fall of funds in 1990 serves to give notice of the difficulties the host and NHPA confront when trying to raise sufficient money to cover prizes, facility cost and operating expenses. These could exceed \$75,000.

In the last issue, this column spoke of the fact that we were not in a position to be "choosey" when seeking financial sponsors for our World Tournament. While some members do not like it, a tobacco company has been signed for a modest sum for this year. Unfortunately, all the joint efforts to produce a "Title Sponsor" have, as of this writing, been unsuccessful. The real truth of the matter is that major corporations who have the budgets and dollars we need, do not see our sport as large or popular enough to generate a cost effective return for their investment.

With only ten days to go before the deadline for 1993, we have yet to receive any firm bid to host the World Tournament in that year. How to raise the bid money is always the main question asked by a potential site. True, we have had discussions with various sites for the 1993 event and one, or two may yet come to bid in the next ten days. But, even then, a successful site must continue to face the difficult task of finding the money necessary to meet their commitment.

The World Tournament is our showcase event. The administrative details alone are a difficult enough task for the NHPA. We should not have to be constantly expending effort to locate and collect funds to support it. There is a way to virtually eliminate the problem and ensure the financial stability of the event. Let the NHPA fund the World Tournament!

It has been several years since the NHPA had an increase in annual dues. With full membership climbing toward a level of 14,000-15,000, a \$3.00 per year increase for adult NHPA membership, earmarked for prize money, would fund the World Tournament every year. We could start with a \$40,000 cash prize list at today's level of membership. As membership increased, so too could the prize money increase. Never again would we have to worry about the host raising prize money or whether we'll be lucky enough to find a sponsor. If a sponsor did come forth, great! That would only serve to increase the prize money. Think about the effect that would have on potential bidding sites. Many more would become interested and competition for the site would no doubt increase two or three fold. With prize money assured, the delegates would have only the pleasant task of selecting the most desirable location.

Would such a change remove all financial responsi-

bility from the host site? No, potential hosts would still be required to place before the delegates, a minimum cash bid of \$15,000 plus trophies. The cash bid of the successful site would go directly to the NHPA to pay for all the various administrative expenses incurred in running the event. These expenses have been paid in the past directly out of the NHPA general funds and have averaged \$12,000-\$15,000 per tournament.

With the NHPA soon to have 40 courts and score machines available to the host at a rental fee far below their cost to build and, a reduction of at least \$25,000 in the minimum bid amount, potential World Tournament sites would have a far more manageable and enjoyable financial goal. Communities and local business would not have to be asked for such large donations and more emphasis can be placed on the financial return the community can expect. This would increase bidding competition and allow the delegates to consider many more potential sites. Many areas may well seek to bid for the tournament at more frequent intervals.

This idea has, in my opinion, many positives and all at the cost of only \$3.00 per year, less than a penny per day per member. Sure, some will object, but the time has come for us to take the initiative and stop one of the biggest headaches we have every year. Let's take control of our most prestigious event and put the emphasis where it should be, having a good time at a financially secure tournament.

1991 is not a year for constitution changes. However, my convictions on this idea are so strong, that I intend to present it to the delegates in Biloxi as a resolution to be adopted and put into effect starting in 1992. If so approved, the additional money collected in 1992 can be used for several different things, i.e.; a contribution to the Columbus W.T., payment of extraneous expenses incurred because of the Georgia shortfall, buying NHPA owned portable courts and scoring machines and, rebuilding our general account that was severely taxed by the Georgia shortfall.

Keep in mind that between this year and next, the NHPA will need some \$30,000 to cover administrative and operational expenses of the two World Tournaments. If a \$40,000 minimum bid is received for the 1993 World Tournament, we will need a further \$15,000 to cover that event as well. Thereafter, we would be totally self-sufficient under this resolution. If no bid is received for the 1993 event, your approval of this resolution, to be made part of our Blue Book at the next printing, would make prize money available and the NHPA would only have to select a site offering the minimum \$15,000.

This resolution is simple and cost effective. I urge all fellow NHPA members to support it on the floor of the 1991 convention.

**EAU CLAIRE**

<u>CLASS A</u>		<u>CLASS B</u>	
Ray Hill	58.6	Ray Tiili	50.7
Len Lipovsky	61.1	Roger Poutanen	62.9
<u>CLASS C</u>		<u>CLASS D</u>	
Al Lonning	49.2	Greg Bottlemey	44.0
Chris Kittl	51.8	Rolly Topper	42.9
<u>CLASS E</u>		<u>CLASS F</u>	
Ernie Ulku	46.6	Dale Heineck	39.1
Dennis Bach	41.4	Bill Thomas	39.1
<u>CLASS G</u>		<u>CLASS H</u>	
Sam Satonica	36.9	Bernie Stelter	38.0
Bert Logsdon	35.1	Ken Jevne	31.4
<u>CLASS I</u>		<u>CLASS A LADIES</u>	
Seneca Ferguson	30.9	Jane Smith	66.0
Roger Schultz	28.0	Edie McKinney	64.5
<u>CLASS B LADIES</u>		<u>CLASS C LADIES</u>	
Ida Hostrup	42.0	Anna Harms	41.6
Carla McFarlane	40.4	Kathy Hanson	40.4
<u>CLASS A JRS</u>		<u>CLASS B JRS</u>	
Justin Topper	41.0	Beau Emery	13.2
Greg Topper	41.33	Randy Topper	12.4

The Eau Claire Club borrowed the format slated for the State Tournament this year. Championship groups of 24 men and 12 women played qualifying rounds to determine classes.

The women's two classes of six were easily divided. The men's qualifying produced some equal percentages. Two were tied at level eight. One had to go into "A"; the other would be the first seed in "B".

Strangely the pitcher assigned to "B" went on to pitch well enough to be a serious contender of "A" caliber. An increase of ten percentage points is unlikely. The tournament director's decision is not contested or an issue.

The scenario may be repeated at the Fond Du Lac State Tournament. WHPA officers should be aware of possible percentage ties in qualification rounds and be prepared to handle them equitably.

**COMBINED LOCKS**

John Reitveld, Kamp's man in the score house, sorta fell into his job. Some years ago he just wandered over to the courts to watch. Somehow he got involved with the score sheets and he's been doing it, mostly alone, ever after. Some pitchers shake and shudder at the thought of keeping score. This guy, Reitveld, coolly does it for everybody, plus the registration, and the awards. He's class "A".

Don Kangas hit a 45 ringer game and Steve Wiegert had a 42 for high games. But over in "B" Wally Srenaski clicked off a 38 that he wished he could have taken to the World.


Some special people get mentioned for not showing up. Carl Joppe, rumor has it, has entered every Kamp's tournament for who knows how many years. This time he had to pass. The spirit was willing but the knee was weak.

<u>CLASS A</u>		<u>CLASS B</u>	
Don Kangas	72.3	Wally Srenaski	59.1
Steve Wiegert	69.1	Otis Wessley	55.7
<u>CLASS C</u>		<u>CLASS D</u>	
Gene Budelier	48.0	Gary Schwartz	41.7
Mike Hansen	41.7	Bill Martin	49.7
<u>CLASS E</u>		<u>CLASS F</u>	
Mal Barnitz	43.4	Bill Matey	29.0
Leon Fischer	37.1	Frank Warmbrunn	39.7
<u>CLASS G</u>		<u>CLASS H</u>	
Ron Sabish Sr	35.0	Roger Behm	32.6
Gary Bloedorn	30.3	David Aho	34.7
<u>CLASS I</u>		<u>CLASS J</u>	
Charles Moravec	24.0	Ron Sabish Jr	29.4
Bob Kabella	23.1	Milon Lambrecht	21.4
<u>CLASS K</u>		<u>CLASS L</u>	
Rocky Rockweit	27.1	Don Davids	18.9
Bob Demerath	26.0	Ken Wood	18.3
<u>CLASS A WOMEN</u>		<u>CLASS B WOMEN</u>	
Phyllis Davids	55.3	Roxanne Selissen	34.8
Cy Srenaski	58.0	Helen Heimerl	26.4



**BURT TROPHIES, INC.**  
 10885 Trophy Lane & E. 29th St.  
 Marshfield, Wisconsin 54449  
 Telephone 715 384-5839

Call or write us for all your award needs. Write for free color catalog.



**NHPA APPROVED**

**R. PETE DONOHO**  
 704 State St.  
 Redding, CA 96001  
 Bus. (916) 243-5761

**CAL FLIP**  
 High Grade Steel and  
 Stainless Steel  
 2 lb. 9 oz. only  
 Made in U.S.A.  
 Richmond, CA

**Guaranteed one year Stainless Steel only**  
 USA Pat. 288-575

**MUSKEGO**

Muskego, where all the women are good looking and the men are strong, found a new tournament director. Tom Steinke, in his maiden appearance, got a break from heaven - no rain this year. In addition the name Steinke attracted more junior pitchers. Although the girl's State Champ did not enter, ten other juniors did. Recognition should go to the tournament committee. They are still there making the director's job easier.

<u>CLASS A</u>		<u>CLASS B</u>	
Norm Mauthe	58.1	Warren Knippel	46.3
Joan Guetzke	60.9	Wayne Vanderhei	44.7
<u>CLASS C</u>		<u>CLASS D</u>	
Ron Thompson	44.2	Joel Bartley	39.6
Gerald Gromowski	41.9	Cathy Kolpin	32.1
<u>CLASS E</u>		<u>CLASS F</u>	
Judy Burns	28.9	Tom Steinke	28.0
Dale Lokken	25.9	Wayne Fry	22.0
<u>CLASS G</u>		<u>JUNIORS</u>	
Karl Wegner	20.7	Mark Mauthe	64.8
Trevor Maliki	17.1	Heidi Sternberg	41.1
		Heather Sternberg	32.6
		Penny Steinke	31.9

**GREEN BAY**

It took a little squeezing, caused a few delays, but Steve Wiegert and the Green Bay Club managed to play all classes of the '91 Swen's Open in one day. On the other side of the state Eau Claire was holding their big one. Last year we were promised a volley ball tournament to run concurrently with the horseshoes. It would have been an ideal liaison of spectators. Well - maybe next year.

What most of us know about Swen Bowman we recently read in the MILWAUKEE JOURNAL. They did fail to mention that there continues to be a WHPA tournament in Green Bay, named in his honor. Keep it going, Green Bay.

Fifty-some pitchers from the North-East enjoyed a beautiful Saturday at the Watering Hole courts. Class A was cut to six. Carl Joppe pulled a ligament pushing a lawnmower - or so he says. It's the same kind of injury sustained of stepping into a deep hole while wading a trout stream.

The ladies class was traditionally separate also handicapped.

<u>CLASS A</u>		<u>CLASS B</u>	
Don Kangas	68.6	Wally Srenaski	52.3
Randy Rein	68.4	Tony Scrima	48.6
<u>CLASS C</u>		<u>CLASS D</u>	
Joe Felton	42.3	Dick Hanold	40.0
Jerry Gossen	41.6	Jim King	34.0
<u>CLASS E</u>		<u>CLASS F</u>	
Jerry Graves	29.1	John Quandt	28.8
Norb Strzyzewski	32.2	Tracy Seiler	20.4
<u>WOMEN</u>			
1st Phyllis Davids	53.6	2nd Cy Srenaski	53.6

**BAT & BREW**

Originally scheduled for late June, the Bat & Brew got under way just in time to make it the last event of this horseshoe year. Not all the pitchers could make the new date so we had move-ups. The two winners from classes C and D agreed to go another round. The tournament was directed by Mike McDonald but the move-ups smacks of a Dick Hansen innovation.

Whoever heard of a forty shoe going 60 shoes because of a tie? Sue Lange, a forty-footer from Lyons, and an unidentified opponent from "D" went an extra ten stakes before it was over.

End of July, it turns out, is a pretty good time for a tournament. Could be a regular date.


<u>CLASS A</u>		<u>CLASS B</u>	
Rich Brower	54.3	Greg Hein	50.7
Jim Haupt	47.3	Mike McDonald	43.2
<u>CLASS C</u>		<u>CLASS D</u>	
Ron Thompson	50.0	Linda Turner	42.3
Emmet Whiting	44.0	Dan Jaglowski	27.1
<u>CLASS E</u>		<u>CLASS F</u>	
Al Thomas	28.8	Keith Sagert	28.1
Auggie Potter	30.4	Linda Potter	22.5

**WHPA FALL MEETING**

**OCTOBER 26TH**

**ROYAL WOOD**

**PLOVER**



**the national horseshoe pitchers association**

**Game Related Items**

**WISCONSIN HORSESHOE PITCHING SUBDISTRIBUTORS**

**Elaine & Cliff Troullier**  
 3126 Wagon Wheel Road, Manitowoc, WI 54220  
 (414) 682-3197  
*(The Paul Neumann display)*



**GOLDENDALE OPEN**

Does it always sprinkle Friday nights in Germantown? Saturday morning rain held up the 8:00AM class. Those three courts were an hour behind throughout the day. Other than that it was another easy day at the office, a typical Goldendale tournament. There's always enough women to run separate classes and the juniors are guests of the club at a special party following their rounds. The club, faced with a meager crew of workers, began popping for hamburgers and beers for those who did the necessary jobs.

Rick Pritzlaff was provided with an update on state averages for seeding. It's a new service John Secord is offering and Goldendale was the first to use it.

**CLASS A**

1. Don Kangas, West Allis	7-0	66.0
2. Randy Rein, Mosinee	6-1	61.4
3. Marv Huffman, Brodhead	4-3	61.7
4. Don Goldsmith, Janesville	3-4	55.1
5. Brian Repinski, Plover	3-4	54.9
6. Steve Wiegert, Green Bay	2-5	58.8
7. Gus Schram, Ringle	2-5	58.0
8. Rick Pritzlaff, Germantown	1-6	52.8

**CLASS B**

1. Lloyd Johnson, Kenosha	6-1	58.6
2. Tony Scrima, Waukesha	5-2	48.9
3. Jeff Secord, Fond du Lac	3-4	50.0
4. Jim Haupt, Milwaukee	3-4	47.4
5. Rich Brower, Burlington	3-4	46.6
6. Roger Poutanen, Wausau	3-4	45.7
7. Cliff Troullier, Manitowoc	3-4	41.7
8. Ken Jaeger, New London	2-5	46.9

**CLASS C**

1. Glenn Bogenschneider, Kenosha	5-0	43.6
2. Gerald Weikert, Marshall	3-2	48.0
3. Marv Guetzke, Germantown	2-3	38.8
4. Jim Bloemers, Fond du Lac	2-3	38.4
5. Chet Hermansen, Madison	2-3	37.6
6. Dennis Ambuehl, Oconomowoc	1-4	32.4

**CLASS D**

1. Leon Uhl, Sheboygan	5-0	45.6
2. Jim Poquette, Richfield	4-1	44.4
3. Gary Schwartz, Sheboygan Falls	3-2	41.6
4. Felix Kubly, Watertown	2-3	41.6
5. John Secord, Fond du Lac	1-4	39.6
6. Warren Knippel, Waukesha	0-5	34.8

**CLASS E**

1. Ken Davison, Menomonee Falls	5-0	38.0
2. Paul Federer, Sun Prairie	4-1	45.6
3. Bob Traber, Cedarburg	3-2	28.8
4. Rob Struebing, Campbellsport	2-3	28.4
5. Dennis Jancoski, St. Francis	1-4	18.8
6. C.L. Ollermann, Fond du Lac	0-5	10.0

**CLASS F**

1. Ron Sabish Sr., Campbellsport	5-0	29.2
2. Terry Sternberg, Richfield	4-1	29.6
3. Richard Conrad, Pewaukee	2-3	25.6
4. Joel Bartley, West Bend	2-3	25.2
5. Bob Kabella, Greenfield	1-4	28.4
6. Gary Bloedorn, Fond du Lac	1-4	28.0

**CLASS G**

1. David Aho, Grafton	5-0	29.6
2. Jeff Mauthe, Platteville	4-1	39.6
3. Larry McCutcheon, Pewaukee	3-2	22.8
4. Don Burnmeister, Brown Deer	1-4	26.0
5. Harold Patton, West Bend	1-4	24.8
6. Norb Strzewski, Manitowoc	1-4	20.4

**CLASS H**

1. Chuck Moravec, Mequon	4-1	26.4
2. Tim Bartley, Neosha	3-2	24.8
3. Wayne Franzen, Franklin	3-2	23.6
4. Jerry Donar, Cuba City	3-2	23.2
5. Willard Smith, Oshkosh	2-3	19.2
6. Jeff Heiligendorf, Milwaukee	0-5	17.6

**CLASS I**

1. Dan Jaglowski, Waukesha	4-1	22.8
2. Herb Thaisen, West Bend	4-1	24.0
3. John Jashinsky, Menomonee Falls	4-1	20.8
4. George Silra, Colgate	1-4	25.6
5. Tom Steinke, Waukesha	1-4	21.2
6. Larry Secord, Fond du Lac	1-4	16.4

**CLASS J**

1. Ron Sabish, Campbellsport	5-0	30.0
2. Rick Stone, Germantown	4-1	25.6
3. Keith Keller, Jackson	3-2	22.4
4. Steve Bartley, Neosha	2-3	14.4
5. Rex Hamann, Milwaukee	1-4	14.4
6. Dick Mackay, Germantown	0-5	17.2

**CLASS K**

1. Paul Neuman, Oconomowoc	6-0	21.7
2. Jim Schuster, Milwaukee	3-3	14.6
3. Jeff Haak, Germantown	2-4	5.0
4. Bob Mattson, Menomonee Falls	1-5	12.5

**CLASS A WOMEN**

1. Gerri Meistad, Racine	4-1	59.2
2. Lorraine Sternberg, Richfield	3-2	60.4
3. Joan Guetzke, Germantown	3-2	59.6
4. Shirley Ballwanz, Fond du Lac	3-2	53.2
5. Elaine Troullier, Manitowoc	2-3	47.6
6. Evelyn Goshaw, Eau Claire	0-5	42.0

**CLASS B WOMEN**

1. Teresa Donar, Cuba City	4-1	39.6
2. Sally Dietzel, Dickeyville	4-1	34.0
3. Carla McFarlane, Wind Lake	3-2	44.8
4. Barb Wolf, Menomonee Falls	2-3	34.8
5. Cathy Kolpin, Big Bend	2-3	30.0
6. Joan Struebing, Campbellsport	0-5	23.2

**CLASS C WOMEN**

1. Jane Meier, Fond du Lac	5-0	45.0
2. Renee Sternberg, Richfield	4-1	37.0
3. Sally Kubash, Milwaukee	3-2	23.0
4. Sandy Meredith, Hubertus	2-3	20.0
5. Amy Keller, Jackson	1-4	7.5

**CLASS A JUNIOR BOYS**

1. Mark Mauthe, Platteville	5-0	47.6
2. Scott Lietzau, Germantown	4-1	43.2
3. Jason Goldsmith, Janesville	3-2	41.6

**CLASS A JUNIOR GIRLS**

1. Heidi Sternberg, Richfield	2-3	41.2
2. Pam Steinke, Waukesha	1-4	32.4
3. Heather Sternberg, Richfield	0-5	31.2

**CLASS B JUNIORS**

1. Penny Steinke, Waukesha	5-0	20.4
2. Cary Sabish, Campbellsport	4-1	24.8
3. Chris Sabish, Campbellsport	3-2	17.6
4. Cory Sabish, Campbellsport	2-3	14.0
5. Jason Stone, Germantown	1-4	12.0
6. Ryan Bogenschneider, Kenosha	0-5	9.2

**CLASS C JUNIORS**

1. Lee McFarlane, Wind Lake	5-1	12.1
2. Andy Bartley, West Bend	4-2	8.4
3. Paul Fricano, Wind Lake	3-3	8.0
4. Adam Bartley, West Bend	0-5	4.2

**HEART OF THE VALLEY VFW POST 10544**

**9TH ANNUAL DOUBLES TEAM**

**HORSESHOE TOURNAMENT**

**SEPTEMBER 6-7-8, 1991**

**AT**

**KAMPS COVERED COURTS**

303 Williams Street  
Combined Locks, WI 54113

**MENS AND LADIES DIVISIONS**  
**MIXED COUPLES DIVISION**  
(If Enough Interest)

**CASH PRIZES FOR ALL CLASSES**

Please Send Ringer % on 100 Shoes  
Plus League Handicap

**ENTRY FEE \$25 PER TEAM**

**ALL ENTRIES MUST BE RECEIVED**  
**BY AUGUST 31, 1991**

Food and Refreshments  
Available at Court

Send Entries to:

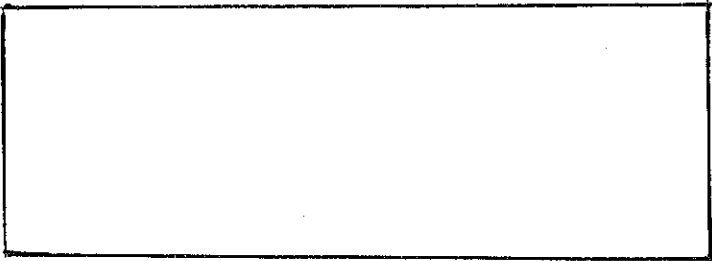
Ken Wood 816 Park Street Combined Locks, WI 54113 788-2617	Le Roy Meyer 217 Arthur Street Appleton, WI 54911 788-4379	Don Navarrete 534 Woodlawn Court Combined Locks, WI 54113 788-1833
---	---	---

**COMBINED AVERAGE - 110% LIMIT**

**FULL RESULTS ARE AN OPTIONAL SERVICE  
OF THIS NEWSLETTER - RATES AVAILABLE**

WISCONSIN HORSESHOE NEWSLETTER  
W204 N11912 GOLDENDALE ROAD  
GERMANTOWN, WI 53022

BULK RATE  
U.S. POSTAGE  
**PAID**  
PERMIT NO. 25  
GERMANTOWN, WI  
53022



CHECK OUT THE NEW EXPANDED  
FACILITIES!

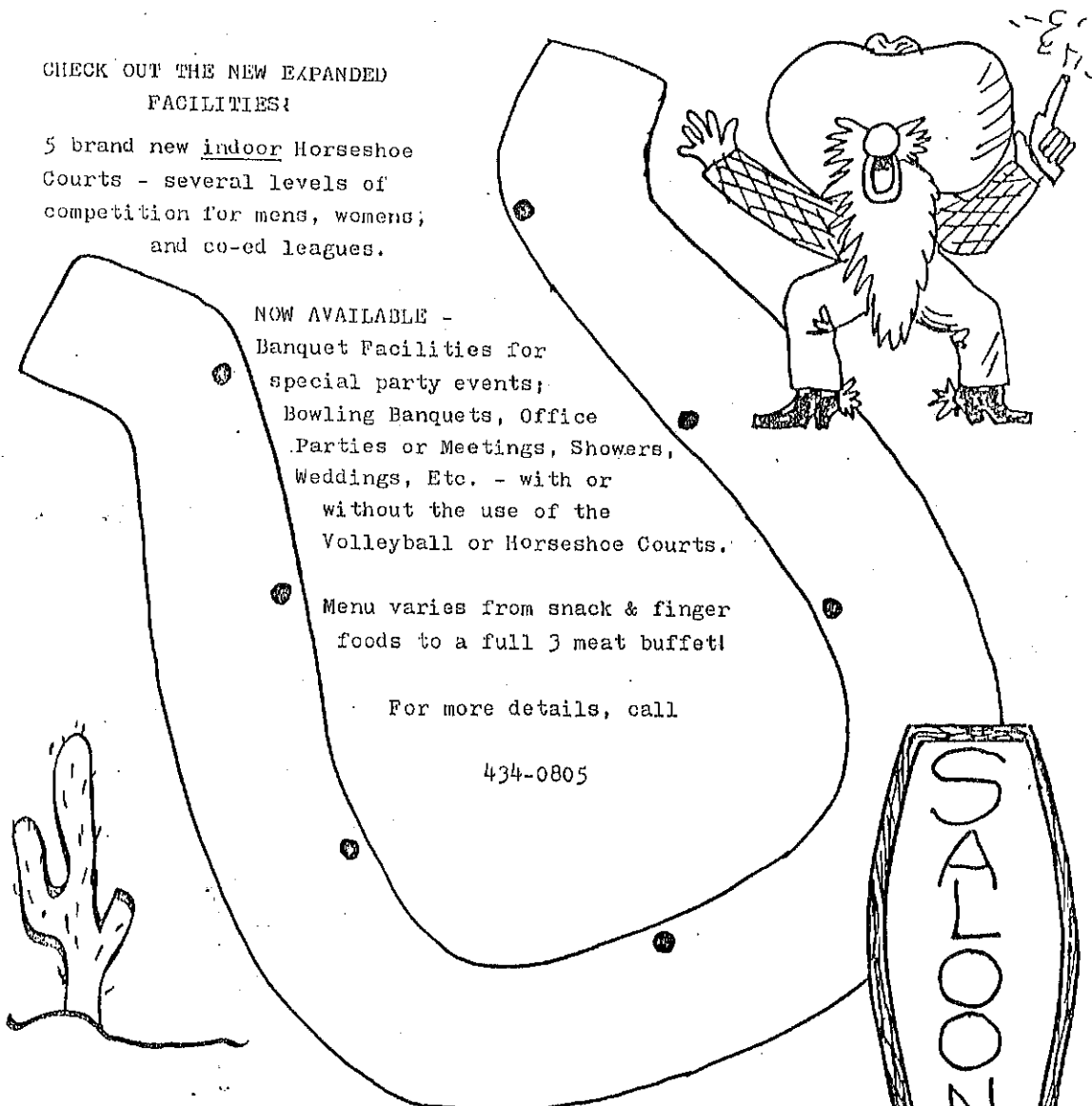
5 brand new indoor Horseshoe  
Courts - several levels of  
competition for mens, womens;  
and co-ed leagues.

NOW AVAILABLE -  
Banquet Facilities for  
special party events;  
Bowling Banquets, Office  
Parties or Meetings, Showers,  
Weddings, Etc. - with or  
without the use of the  
Volleyball or Horseshoe Courts.

Menu varies from snack & finger  
foods to a full 3 meat buffet!

For more details, call

434-0805



Watering Hole  
2107 Welp Ave. Green Bay, WI