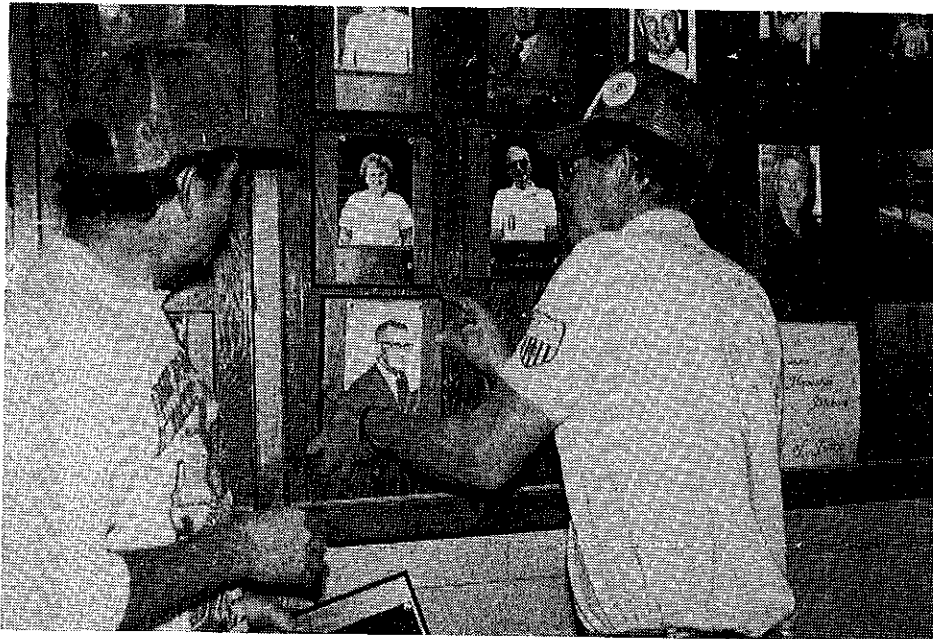


WHPA HALL OF FAME



DICK HANSEN AND RON RAMQUIST

A special ceremony held in conjunction with the Hall of Fame tournament is to have the inductee hang their plaque in the Hall of Fame display case at Royal Wood in Plover. The 1990 recipients of this honor were Ralph Maylahn, Genesee and deceased, Earl Ramquist. Ron Ramquist, Beloit was present to hang his father's plaque. Introducing them was WHPA President, Dick Hansen.

Class A men and women played 35 point games. Randy Rein, Mosinee went undefeated in Class A men, Ralph Maylahn, Genesee, runner-up, had the high game of 71%. In the Class A women's group, Jane Smith, Balsam Lake went undefeated with a 85% high game. There were some outstanding games in this class. Lorraine Sternberg, Richfield had a sizzling 77.2% game Gerri Meistad, Racine a 73.0% game performance and Joan Guetzke, Germantown, a 71.0% game. In the first round Joan Guetzke and Jane Smith had a real close match. In the final shoes, Guetzke was ahead 33-32 but Smith came through with the untopped ringer to win the game. These gals are making giant strides up the ladder.



DICK HANSEN AND RALPH MAYLAHN

The Hall of Fame display case has a newly designed marquee consisting of the WHPA and NHPA logos. Brian and Michelle Repinski of Plover are responsible for the design and construction of the addition



WHPA OFFICERS

<p>PRESIDENT Richard Hansen 3085 S. 76th St. Franksville, WI 53126</p> <p>1ST VICE PRESIDENT Jane Smith R.R. Box 17 Balsam Lake, WI 54810</p> <p>HALL OF FAME Ann Opsteen 304 Williams St. Combined Locks, WI 54113</p>	<p>SECRETARY-TREASURER John Secord W6868 Brown Rd. Fond du Lac, WI 54935</p> <p>2ND VICE PRESIDENT Curt Bestul 1412 Sherwin Rd. Eau Claire, WI 54701</p> <p>SCHOLARSHIP FUND Lorraine Sterberg W206 N13520 Woodside Lane Richfield, WI 53076</p>
--	---

NHPA REGIONAL DIRECTORS

<p>Jim Haupt 5075 N. Elkhart Ave. Milwaukee, WI 53217</p>	<p>Jane Smith R.R. Box 17 Balsam Lake, WI 54810</p>
---	---

WISCONSIN HORSESHOE NEWSLETTER
W204 N11912 Goldendale Rd.
Germantown, WI 53022

<p>EDITOR/PUBLISHER Susie Pritzlaff</p>	<p>STAFF/WRITER Jim Haupt</p>
--	--

Published eight times annually @ \$5.00/yr.

NHPA-WHPA AVERAGE IS HIGH THREE

-Jim Haupt

How do you answer when someone asks, What's your average?

Well..,you may inquire, Which average? My league average is..,or My last tournament was..,or My overall tournament average is.., If you really want impress, you refer to your high three - the same average used to seed the State tournament.

At long last the NHPA has defined the limits of the word average or percentage if you will. Recently NHPA president, Dave Loucks, in NEWSLINE, cleared the subject. Out of quote, his message is that the NHPA body, in convention, selected a tournament entering percentage to be an average of the HIGH THREE tournaments over the past twelve months.

Clearly, sanctioned tournament directors will have to seed by high three. The option of using overall is gone.

For the WHPA, its no problem, we've been working with the high three for some years. Last month, in this NEWSLETTER, John Secord presented the averages of last horseshoe year in order of the high three. Thus he effectively ranked the pitchers of Wisconsin. Count down the list and find your number.

Could we ever dream of having just one percentage to relate. Statisticians, list makers, and in particular John Secord types like to display lots of numbers. Our list shows the high three, overall, and highest. The high three counts : the rest is tinsel - like counting double ringers on your round robin cards.

When entering the World Tournament the high three will have to be NHPA sanctioned tournaments. We will have more sanctioned tournaments. Norm Mauthe, Platteville, has plans for an NHPA tournament May 25-26. Beloit is considering sanction for their Spring Singles. All of the Royal Wood events are sanctioned. Hopefully those of last season will repeat

WHPA tournament directors will be receiving an updated list in time to seed their tournaments. Perhaps that list will be limited to the High Three. Don't ask me how.

Perhaps the list will change slightly from time to time but to change the high three will take a string of good shoes.

- Just Do It!

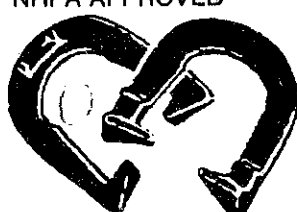
One Day Service
Sales Incentives
Awards, Trophies, Plaques

Manufacturer

RUDIG OLYMPIC AWARDS
126 S. 2nd Street
Milwaukee, WI 53204

Royce DeBow (414) 273-2727
National Sales Manager

NHPA APPROVED



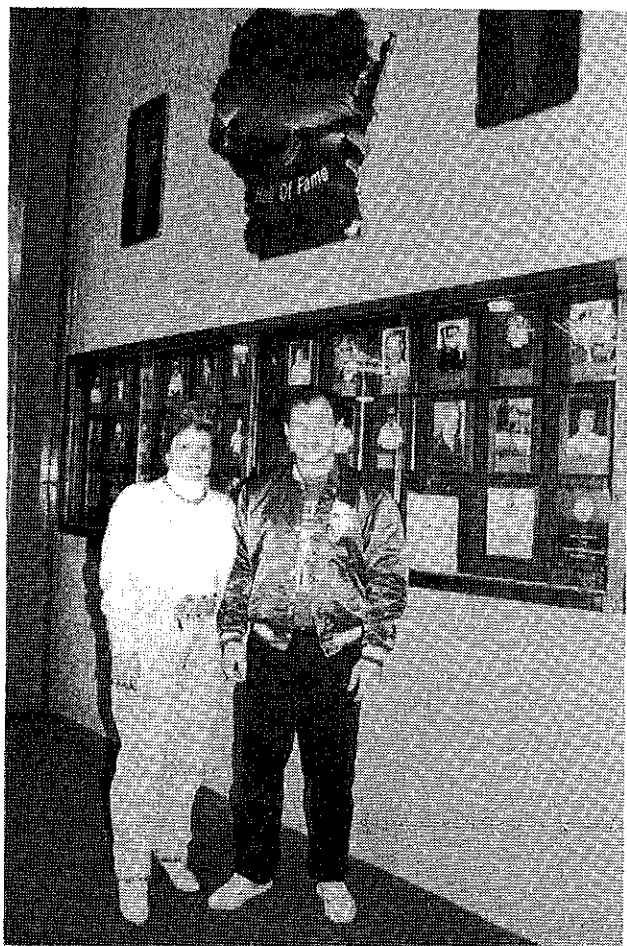
R. PETE DONOHO
704 State St.
Redding, CA 96001
Bus. (916) 243-5761

B

CAL FLIP
High Grade
Steel
and
Stainless Steel
2 lb. 9 oz. only

Made in
U.S.A.
Richmond, CA

**Guaranteed one year
Stainless Steel only**
USA Pat. 288-575



BRIAN AND MICHELLE REPINSKI



DOUG BARRY

HALL OF FAME CONTINUED

to our WHPA Hall of Fame display case. Thanks also to Doug Berry of Royal Wood for giving us a new home for the WHPA Hall of Fame.

CLASS A MEN

Randy Rein 59.7
Ralph Maylahn 57.4

CLASS B

Gerri Meistad 52.8
Gladie Lila 50.8

CLASS D

LaVern Dohm 46.6
Cliff Troullier 42.8

CLASS F

Roger Juedes 40.4
Ed Rupno 35.2

CLASS H

Harold Laws 42.8
Frank Look 29.6

JUNIORS

Jason Goldsmith 36.5

CLASS A WOMEN

Jane Smith 68.4
Lor Sternberg 59.1

CLASS C

Gene Budelier 45.2
Harold Bestul 44.0

CLASS E

John Secord 43.6
Tony Gaetz 40.8

CLASS G

Bob Struebing 35.6
Cliff Lila 35.2

CLASS I

Henry Zeisse 30.0
Ken Lovas 28.8

Ren Sternberg 33.0

WISCONSIN HORSESHOE NEWSLETTER
W204 N11920 Goldendale Rd.
Germantown, WI 53022

NEW SUBSCRIPTION RATES: 8 issues per year

1YR. - \$6.00.....
2YR. - \$11.00.....
3YR. - \$15.00.....

**WISCONSIN'S FINEST
HORSESHOE
PUBLICATION**

Your term of subscription may be extended at any time. Why not re-subscribe now?

Name.....

Address.....

City.....State.....Zip.....

WHNL - An independent private venture funded wholly by subscribers and advertisers. Advertising rate schedule on request.



"NEW" KIDS ON THE BLOCK

Perhaps many of you already have heard the news; Elaine and Cliff Troullier have bought the horseshoe and horseshoe related items subdistributorship from Paul Neumann. Many of you probably already know them, but if not feel free to introduce yourself to them. They plan on displaying at all the tournaments at Royalwood in Plover. They hope to be able to continue to serve your needs in the same high quality manner that Paul did. Stop by and see them, they would love to meet you.

All Deadeye and Steinfeldt horseshoes needing replacement under warranty **MUST BE SENT BACK TO THE MANUFACTURER.** The instructions are enclosed with every pair of horseshoes. This is the **ONLY WAY TO PROCESS THE BROKEN SHOES.** Distributors and Sub-Distributors will no longer be allowed to replace broken shoes. Please heed this warning.

INDOOR TOURNAMENTS

- Jan 12-13 Royal Wood #28-91-001 \$20 by Dec 30
Point All-American All Malt Ser. #2
1501 Cedar Dr, Plover 715-341-8950
- Jan 19-20 Whiting H. S. Club \$11.50 by Jan 5?
1523 Atchison Whiting, IN 219-659-7079
- Feb 16-17 Royal Wood #28-91-002 \$20 by Feb 2
WHPA SPRING MEETING Open
- Mar 2-3 Kankakee County, IL \$20 by Feb 16
PO Box 1681 Kankakee, IL 60901
40ft courts only 815-933-7721
- Mar 9-10 Royal Wood #28-91-003 \$20 by Feb 17
Point All-American All Malt Ser. #3
- Mar 16-17 Whiting H. S. Club \$11.50 by Mar 2
South side of Chicago 4 clay courts
- Apr 5-7 Whiting SANCTIONED - \$15 by Mar 23
Need shirt with name 75% pay-back
- Apr 12-13 Royal Wood #28-91-004 \$20 by Mar 30
Point All-American All Malt Ser. #4
- Apr 19 Beloit-24 courts \$80/team by Apr 1
WIS CLUB-TEAM #28-91-005 4 on team
J Haupt 5075 N Elkhart Milwaukee, WI
53217 ph 414-964-2735
- APR 25-26-27 TEAM-WORLD #28-91-006, Beloit, WI
\$200/team by Apr 1, Tom Roanhouse
108B W Main St Waterford, WI 53185
24 courts; 24 teams; \$5000 in awards
- May 11-12 Royal Wood #28-91-007 \$20 by Apr 26
Point All-American All Malt Ser. #5



the
national
horseshoe pitchers
association

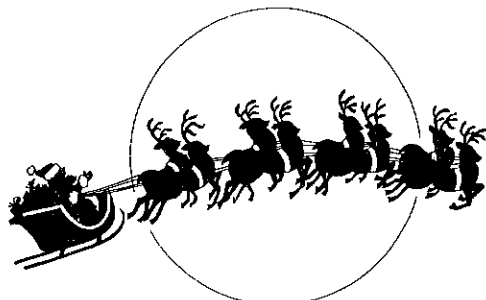
Game Related Items

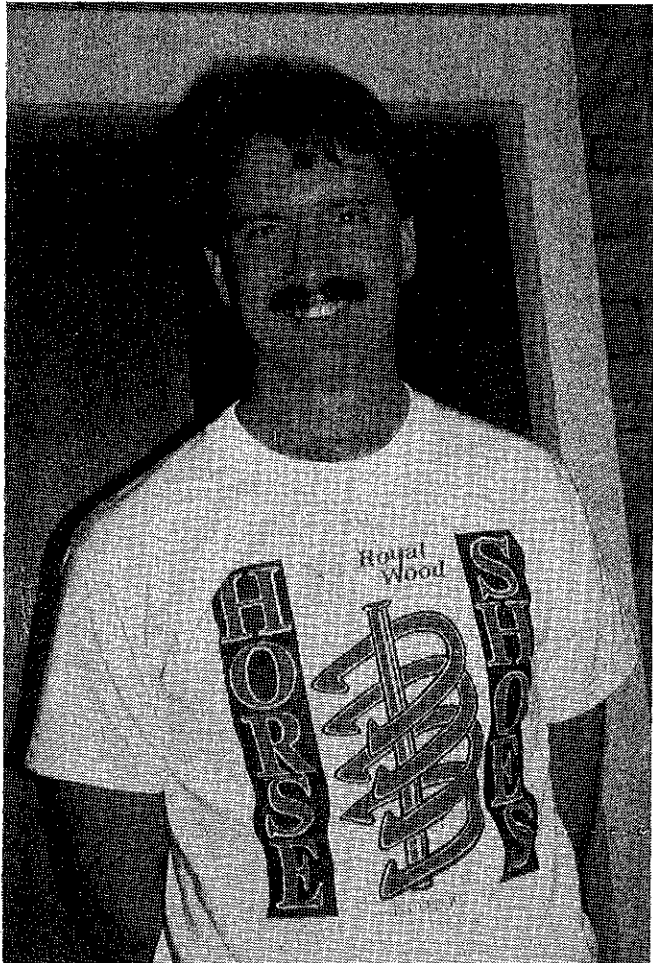
WISCONSIN HORSESHOE PITCHING SUBDISTRIBUTORS

Elaine & Cliff Troullier

3126 Wagon Wheel Road, Manitowoc, WI 54220
(414) 682-3197

(The PAUL NEUMANN display)





Horseshoe pitching Champion and Professional Bowler, Walter Ray Williams Jr. of Stockton, California was in Milwaukee Thanksgiving week for the American Bowling Congress Classic. Williams did cash in the tournament but didn't make the top 24 for match play so he decided to take a ride to Plover to pitch some horseshoes at Royal Wood Sports Center. Walter Ray was very impressed with Wisconsin's newest indoor horseshoe pitching facility. Doug Berry of Royal Wood, himself an accomplished bowler with a 200 average and a 300 game ring to his credit was very happy to have him there.

Try The First Shoe Designed for Horseshoe Pitching



- 100% super soft garment leather for excellent comfort and control.
- Shockproof, with soft midsole and wedge.
- Durable rubber outsole for strength and long wear.
- Heel support for greater strength.
- Terry cloth inside collar padded with urethane foam.
- Removable, replaceable Texon insole.

ALSO MAKES A GREAT WALKING SHOE!

LET CLAY 'N SAND IMPROVE YOUR GAME

Order Your Clay 'N Sand Pitching Shoes Today

Men's 8 ___ 9 ___ 10 ___ 11 ___ 12 ___
8-1/2 ___ 9-1/2 ___ 10-1/2 ___ 11-1/2 ___ 12-1/2 ___

Women's 6 ___ 7 ___ 8 ___ 9 ___
6-1/2 ___ 7-1/2 ___ 8-1/2 ___ 9-1/2 ___
(Please Print Clearly)

Name _____

Address _____

City _____ State _____ Zip _____

Send check of \$40.00 plus \$5.00 shipping and handling to:

CLAY 'N SAND, Inc. 414/654-6404
6901 Sheridan Rd.
Kenosha, WI 53140

Wisconsin Residents add 5% Sales Tax



Down And Back

Some guy said we should air it out in the NEWSLETTER before we get to the next State Meeting. Here goes...

At the Fall meeting in Eau Claire the members in attendance rearranged the ladies class A by adding four pitchers to make it a twelve lady class. In my mind, the reasoning was to pitch two days - like the mens class.

The entering percentage spread went from ± 20 points with an eight lady class to ± 24 points with the twelve lady class. (The spread in mens class A was ± 13 points)

Does it occur to you that we made a bad situation even worse? An uneven seed became lopsided.

Later in the meeting after development of a mens 24-place championship round, it was suggested to do something similar with the already modified ladies class.

It seemed the immediate objections indicated change was coming too fast, too much, and too drastic. It did not fly.

But let's reconsider. We did the ladies no favor. The class is too diverse. Can we put up with a watered down class merely to pitch two days?

This is the way to firm up the ladies Championship class. There are now twelve in the class. First day they split into two groups each playing a qualifying six-place round robin. That divides the group into "A" and "B" for the final five games the second day.

Twelve top ladies all get a shot at the State title. They all pitch two days. We tighten-up both classes and it adds class to the ladies title. The "B" trophy has more impact.

It looks too good to pass up. Let's do it.

As a footnote we must recall the first game of Ladies A wherein the number eight seed beat the defending champion. Strange things happen in this game no matter how hard one tries to make everything balance.

I'm bringing this up as 'old business'. What's your view?

Martin Carlson of Abbotsford usually spends his winters in Arizona. This year he he is confined to a nursing home in Stanley, WI. He had surgery at the time of the State Tournament and subsequently suffered a stroke. A card or a note seems the least we could do.

* * *

Bud Renley of Beloit had a brain tumor removed recently in a Madison Hospital. We last heard he gave the doctors orders to speed things up a little so's he could get out there for deer hunting. He's not through with the doctoring.

* * *

Tony Scrima can't hide it any longer. When that man misses two tournaments in a row, we know something is haywire. His doctors can't figure it out either. We would like to send this verbal card: Picture two kids, the 'our gang' type, sitting on the curb, chins in the palm, elbows on the knee, and looking sorta' glum. The caption says, "Just sittin' around waitin' for you to get better..." Inside it's written, "(Hurry-up, cause our butts are gettin' sore.)"

A LITTLE KNOWN RULE

How about it? Can you pitch one shoe from the right-side platform and the other from the left?

RULE 8 - CHOICE OF PITCH

Section a. A contestant must pitch the second shoe from the same side of the approach as the first. A contestant may pitch the shoes from the approach of choice during any inning of the game as long as they are both pitched from the same side. Penalty: The second shoe shall be removed from the court.

O.K. Chet, you win.

WITH JIM HAUPT

AGENDA = ITEMS OF BUSINESS

- Jim Haupt

A couple of years ago we, the WHPA, asked for and subsequently received an agenda prior to WHPA meetings. It has been a listing of the order of reports, old and new business, elections, etc.

I was disappointed but reluctant to complain. I thought we got what we asked for and that was that. What I thought we were going to get was a grocery list of prime topics to be considered.

Lately, after some consideration, it occurred to me that we should develop the present agenda to include the items of business for discussion. Give the business portion some headings.

We have had enough surprises and resulting hasty decisions at these meetings. Always pressed for time, we have made some rash judgements, in fact we do it at every meeting.

Last Fall we were offered an opportunity to move the Meeting to other than during the State Tournament. Its worthy of consideration. But, we were unaware of this proposal, had no time mull it over. Furthermore it was not properly presented. No other time slot was offered as a valid alternative. It failed miserably 32 to 8.

Had this proposal been announced in this newsletter as an item of "New Business" we may have been able to find another time for the Fall Meeting.

If the concept of Championship women playing both days at the State had been previously announced, there is a good chance it would have been handled similar to the men's new format. As it is we now have a truly non-competitive, 12 lady class A just to pitch both days.

The men's 24-man championship class was willingly accepted on a trial basis. What's the big secret? Why did we have to wait til we got into that meeting room to hear about the idea?

Our next meeting will be during the February 16-17 tournament at Royal Wood. Now is not too early to write the Newsletter regarding your ideas for change. Dick Hansen will accept your idea letter if you do not care to see it published. The main idea here is to communicate. We can't put headings on new or old business if

just wait for the meeting. Let's make the agenda meaningful.

This Newsletter is your platform :
Use it.

"HOW TO PITCH MORE RINGERS"

Carl Steinfeldt, most recently known to us as Ray Hill's adversary, is the teaching-pro in a new video, "How To Pitch More Ringers". First shown at the Stone Mountain World Tournament, this video has already sold over 400 tapes.

"It's about time - a teaching tape" was the comment received.

The tape is \$24.95 plus \$3.00 postage and handling. Hopefully it's available from Elaine and Cliff Troullier, or have them write to Carl Steinfeldt for your copy. See, Game Related Sales, ad for address.

**BURT TROPHIES, INC.**

10885 Trophy Lane & E. 29th St.

Marshfield, Wisconsin 54449

Telephone 715 384-5839

Call or write us for all
your award needs. Write
for free color catalog.



6111 Magnolia Drive
Wisconsin Rapids, Wisconsin 54494

OFFICE: (414) 771-3750
HOME: (414) 423-4522

CHRISTOPHER J. KITTI
 INVESTMENT PLANNER

Charter Investment Services, Inc.

AFFILIATED WITH CAPITAL FINANCIAL SERVICES, INC.

 2323 N. MAYFAIR ROAD, SUITE 502
 MILWAUKEE, WISCONSIN 53226

Stocks, Bonds, Mutual Funds,
Government Securities, Money Markets
Tax for Securities
Complete Financial Planning

WISCONSIN HORSESHOE NEWSLETTER
W204 N11912 GOLDENDALE ROAD
GERMANTOWN, WI 53022

*Jim Haupt
5075 N. Elkhart Ave.
Milwaukee, WI 53217*



CHECK OUT THE NEW EXPANDED FACILITIES!

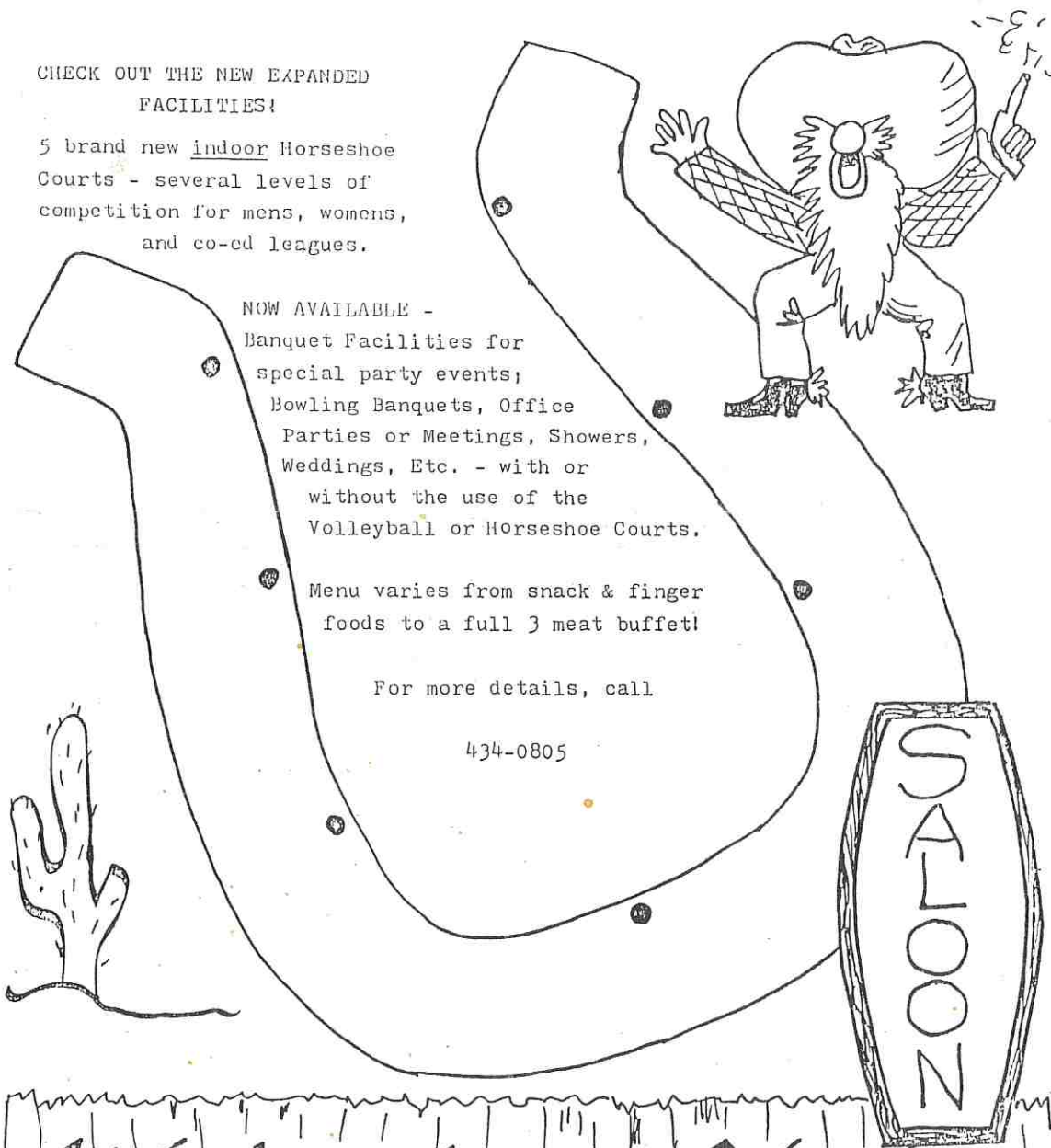
5 brand new indoor Horseshoe Courts - several levels of competition for mens, womens, and co-ed leagues.

NOW AVAILABLE - Banquet Facilities for special party events; Bowling Banquets, Office Parties or Meetings, Showers, Weddings, Etc. - with or without the use of the Volleyball or Horseshoe Courts.

Menu varies from snack & finger foods to a full 3 meat buffet!

For more details, call

434-0805



Watering Hole
2107 Velp Ave. Green Bay, WI