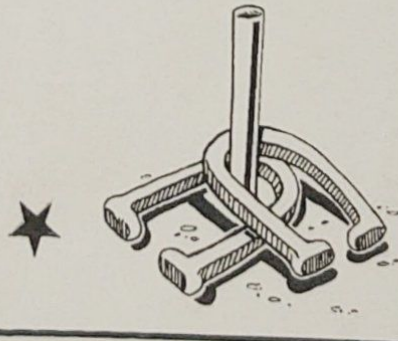


93rd WISCONSIN

STATE HORSESHOE
TOURNAMENT

September 5-7, 2015



Platteville, WI

Co-host: BELOIT

Pioneering the Good Life

M

PLATTEVILLE

W I S C O N S I N

Home of the University of Wisconsin-Platteville

To all 2015 State Horseshoe Pitching Tournament participants,

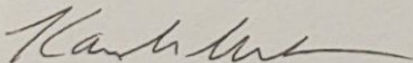
Welcome to Platteville!

Thank you for selecting our community as host for the 2015 Tournament. We hope you enjoy both your stay in our city and our wonderful recreation facilities. The city has been fortunate to have the support and help from the local horseshoe club, and both take a great deal of pride in the condition of our parks.

During your stay, we hope you will take some time to explore our community. Enjoy our historic downtown, wide variety of eating establishments and the city's historic Mining Museum and the Rountree Gallery. Visit the Bauer-Kearns Winery and hike up the largest "M" for a great view of the scenic landscape. Take some time and stop by the Welcome Center, located on Business Highway 151 (across from McDonalds) for additional information on what Platteville has to offer, or visit the City's website at www.platteville.org.

If city staff can be of any assistance during your stay, please feel free to call my office at (608) 348-9741. Again, welcome and enjoy your stay!

Karen M. Kurt



City Manager

PLATTEVILLE
REGIONAL CHAMBER
better together

TRAVEL
WISCONSIN
WELCOME CENTER

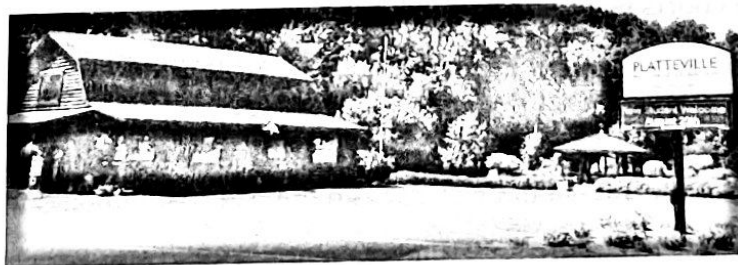
Platteville Regional Chamber

Welcome to Platteville! You are at the Gateway of
Something Special - Southwest Wisconsin!
Take in the beauty of the unglaciated rolling hills
of Southwest Wisconsin!

The Platteville Regional Chamber and Travel Wisconsin
Welcome Center is here for your every need! Visit us for
information about local, state, and national travel! Our
friendly and knowledgeable staff will help you with your
travel needs. We have clean restrooms, free Wi-Fi
and hundreds of free travel publications!

**Hours: May 1st - Oct. 31st : Monday-Friday: 8am-6pm,
Saturday: 10am-4pm, Sunday: 10am-2pm
November 1st - April 30th: Monday-Friday: 8am-5pm**

We hope you enjoy your stay in Platteville and
Good Luck to all State Horseshoe participants!



275 W. Business Hwy. 151
P.O. Box 724
Platteville, WI 53818
608-348-8888
www.platteville.com



History of the Platteville Horseshoe Pitching Association

By Mark and Norm Mauthe

The Platteville Horseshoe Pitching Association originated in 1981 when a small group of pitchers led by Francis Fogel, Bob Bennett, LaVerne "Beany" Flesch and a few others got approval from the city and six clay courts with lights were installed on the grounds of the west side of Legion Field Park. Bob Bennett served as our club president, Norm Mauthe as vice president, and Grace Fogel as secretary/treasurer.

The "warming house" as it is called (because it is the cozy staging area for departing ice skaters when the open field gets frozen over in the winter time) would be our storage area for supplies. The first leagues that ran were a women's doubles on Wednesday nights and a men's doubles on Thursday nights. Not long after that leagues were added on Monday nights for mixed play. It was kind of a "beginners" league which included all junior players as well as men and women. A second night of men's doubles was added on Tuesday as well. All leagues were played count all handicap with the early percentage being eighty-five. Over time all leagues were amended to one hundred percent handicap which is how we play present day.

That first set of six courts had a picket fence surrounding it and the lights. A plan was to go ahead and replace the picket fence with a chain link fence however Norm Mauthe asked that we add two more courts before doing that. In 1984 two more courts were added to make the eight and a new chain link fence was installed which surrounded the entire lay out. Platteville's first state listed tournament (The Platteville Open) was run in 1984. There were seventy-two entries for that first tournament. Forty-eight men, twelve women, six boys, and six girls. The entries for the Platteville Open tournament grew to over ninety in coming years.

In 1990 five more courts were added behind the original courts with room allowed for three more. Having the courts back to back is kind of an unusual set up, but is all that space allowed for. With the addition of the five courts we started a second open tournament in 1991. The Platteville Spring Singles on Memorial Day weekend was our first NHPA sanctioned event and that tournament continues to this day. The Platteville Open would eventually be switched to a sanctioned event in 1995. Also taking place in the early 90's we purchased four shade trees and had them planted on the south end of the old courts. A welcome addition to help with blistering summer heat. Within a few years four more shade trees were transplanted from club member Mel Fogel's farm and are located between the front and back courts. A NHPA sanctioned singles league was started by Mark Mauthe in 2002. That league continues to this day.

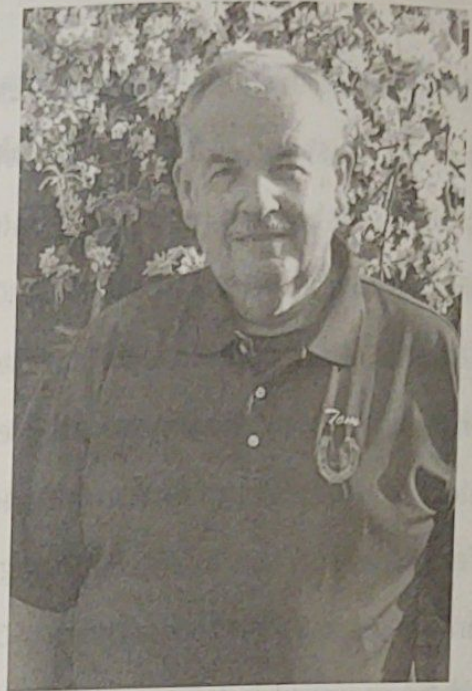
The Platteville club had an interest in eventually hosting the State Tournament and earned the vote from the members to host for 2004. Once that had been determined the club added three more courts in 2003 as well as nicely fashioned new pop / paint can holders. A new storage shed was also purchased in 2004. The club had also secured a NHPF grant of \$1,000 to help pay for the new court upgrades. Longtime club President Bob Bennett retired in 2004 after twenty-three years of distinguished service. Bob being largely responsible for working with the city to secure the funding for such fine facilities that we have today. Mark Mauthe was elected president at that time and serves as president to this day. The 2004 State Tournament was a joint effort between the Arena Sandbaggers club and the Platteville club and was a complete success. We would team up once again to host the 2009 State Tournament in Platteville. These two tournaments would not have been possible to run without the assistance of the Arena club and their efforts deserve all recognition.

Times have changed over the years and like many clubs we have adapted. The mixed Monday league and the women's league eventually merged with the Tuesday and Thursday doubles leagues. We currently run with those two leagues as well as the Monday sanctioned singles. Since the very beginning we have run an event during Platteville's annual Dairy Days Festival. That started with a 24 shoe pitch format and now runs with a high-low doubles on Friday night the weekend after Labor Day weekend.

A few years ago a very special donation was made by the family of Orville Baker. Orville had his own welding shop which he has since passed on to his son Jeff. We used to play there in the winter time as he had two portable courts set up in the shop. In his spare time over the years he had fabricated an "Iron Man" as we like to call it. After Orville's passing his son Gary installed the "Iron Man" at the west end of the courts. The sculpture is the likeness of a horseshoe pitcher in mid swing that stands in honor of Orville and all that participate at the Platteville courts.

As with many clubs throughout the state our numbers are affected by the toll of time. In 2001 with funds donated from the family of LaVern Edge we started the LaVern Edge memorial plaque to honor those club members that are no longer with us. Sadly that plaque has now become two plaques totaling sixty-six cherished names on them.

The Platteville club is honored and humbled to have been chosen to host the 2015 State Tournament and hopes it will be every bit as successful and enjoyable as the 2004 and 2009 tournaments were.



2015 Hall Of Fame Inductee – Tom Steinke

Tom Steinke was born on September 5, 1947. He married his wife, Sharon, on June 21, 1969. They have three children, Mike, Pam and Penny, along with three grandchildren, Mary Ann, Abby and June. Tom's hobbies include horseshoes, bowling and dartball. He is a lover of all animals, which he has many of including dogs, chickens, pigeons, peafowl, geese, ducks and parrots.

Tom was raised on a farm by his dad, a farmer, and his mom, a registered nurse. They had eight children of which Tom was the oldest of five boys and three girls. He has spent his entire life in Wisconsin. He grew up in Eagle and lived there in 1947 and 1948. He then moved to Waukesha and was there from 1948 to 1955. He spent time in Mukwonago from 1955 to 1969. He made another trip back to Waukesha, living there from 1969 to 2001. Currently he resides in Eagle.

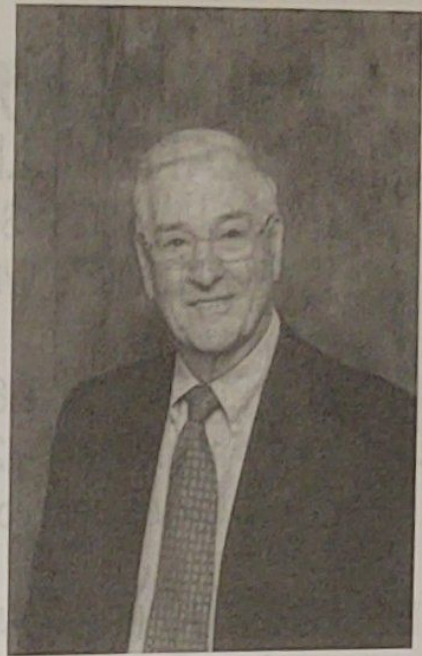
Tom began pitching horseshoes at Lake Camelot in 1980 with Galen Kozel at Bernie Schmitt's place on the lake. He began pitching in leagues in 1982 and then joined the NHPA in 1983 after meeting Howie Voiles. He met Tony Scrima in 1983 and they have been doubles partners ever since.

Horseshoes, by far, is his favorite hobby. He has made a lot of friends through the years. Tom enjoys going to tournaments and visiting with everyone. He feels extremely lucky to have children that still like to pitch horseshoes, which adds a lot to the game.

In 1987, Tom entered his first World Tournament held in Eau Claire, Wisconsin. He finished 6th in his class. Since that time he has pitched in 20 World Tournaments, finishing first in 1991 and 1995. He also won third place and fifth place at World Tournaments. He has pitched in approximately 450 tournaments finishing first 36 times! He earned Pitcher of the Year four times and was awarded the Ken Kosky Award and the Presidents' Award.

As an organizer and promoter of Wisconsin Horseshoes, he has made a great contribution to our state. He served on the WHPA board for 16 years, eight years as President and eight years as Third Vice President/Junior Scholarship Director. He helped to increase WHPA membership by being the director of the Muskego Moose Open Tournament since 1989. He took this tournament over with help from Wayne Franzen who ran it for many years. He also ran four Junior Scholarship Tournaments at the Arena Indoor Horseshoe Courts. He was the Director of the Wisconsin State Moose Tournament three times. He has organized and managed several leagues in Pewaukee, Muskego and Waukesha.

Tom would like to thank everyone for this honor of being inducted into the Wisconsin Horseshoe Pitchers' Hall of Fame!



2015 Hall of Fame Inductee – Rudy Van Fleet

Rudy Van Fleet grew up on a farm near Viola, Wisconsin in Richland County. Rudy went to college at U.W. Platteville and graduated with a B.S. in Agriculture Education. Rudy met Nancy in college and they were married soon after graduation. Their family consisted of six children.

Rudy later went on to U.W. Madison and earned a M.S. in Agriculture Education. His professional career started as an agriculture instructor at Ithaca High School for three years and later at Columbus High School for 11 years. This was followed by 25 years with the University of Wisconsin Cooperative Extension in Columbia County.

Rudy has always been very involved in sports. He participated in basketball and baseball in high school and in college. He became a four year letterman in both sports at U.W. Platteville and was inducted into the Athletic Hall of Fame in 2001. Rudy's passion for basketball extended far beyond his playing days in grade school, high school and college. He saw officiating as a way to stay close to the game and it gave him many more years of enjoyment in the sport. He officiated in both the high school and college level and had the opportunity to work 30 regional tournaments, 20 sectional tournaments and two state tournaments in the WIAA play-offs. In 2007, he was inducted as a Hall of Fame Official by the Wisconsin Basketball Coaches Association.

After retiring from the UW Cooperative in 1996, Rudy found himself wondering what to do with his newly found spare time. He wanted a new hobby but didn't really know what he wanted to do. He didn't hunt, fish or play golf. By chance, he saw a good friend, Russ Farr, at the grocery store and Russ asked Rudy how retirement was going. That's when Russ asked Rudy about pitching horseshoes and invited him out to get acquainted with the sport. Rudy got the bug and became obsessed with the pitching horseshoes. He started practicing every day, expecting to become a high percentage pitcher. That didn't happen, but he still pitches every day and is known to at least once pitch a 60% game in a tournament.

Russ also introduced Rudy to the Deansville Horseshoe Club. They were looking for a person to be their record keeper. Rudy had the time and interest, so he signed on to help. Not only has Rudy held the position of secretary-treasurer in Deansville since his early days with the club, he has also become the soul and backbone of the club. He makes himself available at every league night. He is the caretaker of the facility and its members and has earned the admiration of the entire Deansville club with his devotion to making sure they have everything they need to enjoy the game. He has been tournament director for Deansville's tournaments since 2002. Deansville hosted 5 tournaments in 2014 alone which has made Rudy a recognizable figure across the WHPA. The effort that Rudy has put into his club and to the game of horseshoes is appreciated by all and we are proud to see him be inducted into the WHPA Hall of Fame.



**SUPER 8 MOTEL
PLATTEVILLE**
100 HWY 80/81 SOUTH
PLATTEVILLE, WI 53818

PH: (608) 348-8800
Fax (608) 348-7233
www.super8.com

FREE SUPER-START BREAKFAST

72 COMFORTABLE ROOMS
N/S ROOMS

BALCONIES FACING CREEK
THROUGHOUT PROPERTY

Welcome Horseshoe Pitchers
GOOD LUCK!



WEYGANT'S

APPLIANCE, INC.

5973 State Road 80-81 South
Platteville, Wisconsin 53818

Phone: (608) 348-2156

FRIGIDAIRE



VACUUMS



Beautyrest
MATTRESSES

**BURNHAM
LUMBER CO., INC.**

1 Mile North of Rewey on County G
Phone: (608) 943-6323

*Agricultural, Commercial
& Residential Buildings*

patz



Hartig Drug

180 West Pine St. Platteville, WI
(608) 348-9771

Store Hours

Mon-Fri 7-9

Sat 8-9

Sun 9-6

Cars • Trucks • Farm

IMPORTS • INDUSTRIAL

• SMALL ENGINE • CUSTOM PAINTS

OPEN 7 DAYS A WEEK:

Mon.-Fri., 7:30 a.m.-6:00 p.m.;

Sat., 7:30 a.m.-4:00 p.m.; Sun., 10:00 a.m.-2:00 p.m.

"Get NAPA Know How"



AUTO PARTS

475 E. Bus. Hwy. 151, Platteville, WI
(608) 348-3032

www.napaonline.com

Wisconsin Hall of Fame Members

1976	Harvey Elmerston	Wisconsin Rapids	Pitcher
	Casey Jones	Plymouth	Pitcher
1977	Arthur Niemann	Milwaukee	Promoter
1978	Edward Wing	Germantown	Pitcher / Promoter
1979	Tommy Bartlen	West Allis	Pitcher
	Swen Bowman	Green Bay	Promoter
1980	Arnie Rupnow	Oconomowoc	Promoter
	Wally Saeger	Ixonia	Pitcher
1981	Bill Glass	Vesper	Pitcher
	Carl Pfeffer	Milwaukee	Pitcher
1982	Art Klement	Fort Atkinson	Promoter
	Ed Schimek	Milwaukee	Pitcher
1983	Henry Bartel	Wautoma	Promoter
	Ann Opsteen	Combined Locks	Promoter
1984	Harold Bestul	Rosholt	Pitcher
	Bob Wilke	Berlin	Pitcher
1985	Curt Bestul	Eau Claire	Pitcher / Promoter
	Beaty Bestul	Eau Claire	Promoter
	C.L. Ollerman	Fond du Lac	Promoter
	Archie Johnson	Brothertown	Promoter
	Esther Voigt	Fillmore	Promoter
1986	Pat Eaton	Eau Claire	Pitcher / Promoter
	Carl Joppe	Green Bay	Pitcher
	Jerry Kamps	Combined Locks	Promoter
1987	Susie Pritzlaff	Germantown	Promoter
	Ray Specht	Marshfield	Promoter
1988	Darlene Ebert	Fredonia	Pitcher
	Harold Scheets	San Diego, CA	Pitcher
1989	Forrest Mitchell	Wausaukee	Promoter
	Royce Wrucke	Horicon	Pitcher
1990	Ralph Maylahn	Genesee Depot	Pitcher / Promoter
	Earl Ramquist	Beloit	Pitcher / Promoter
1991	Charles Christoplis	Sheboygan	Promoter
	Wally Srenaski	Green Bay	Promoter
	Cyrena Srenaski	Green Bay	Pitcher / Promoter
1992	John Secord	Fond du Lac	Promoter
	Jane Smith	Balsam Lake	Pitcher / Promoter
1993	Bob Phelan	Appleton	Promoter
1994	Felix Kubly	Watertown	Promoter
1995	Rick Pritzlaff	Germantown	Pitcher / Promoter
1996	Jim Haupt	Milwaukee	Promoter
	Howie Voiles	Lannon	Promoter
1997	Ray Billen	Kenosha	Promoter
	John Brezina	Boyceville	Promoter
**	Ray Hill	Ironwood, MI	Pitcher
1998	Dick Hansen	Franksville	Promoter
1999	Norm Mauthe	Platteville	Promoter
2000	Sid Anderson	Janesville	Pitcher
2001	Clayton Gage	Milltown	Pitcher
	Earl Paulson	Beloit	Promoter
**	Red Ferguson	South Beloit, IL	Promoter
2002	Lorraine Sternberg	Richfield	Pitcher / Promoter
2003	Randy Rein	Mosinee	Pitcher
2004	Edie McKinney	Luck	Pitcher / Promoter

2005	Ken Jaeger Ken Kosky	New London Schofield Richfield	Promoter Promoter Promoter
2006	Terry Sternberg	Richland Center	Pitcher / Promoter
2007	Bun Carley	Barneveld	Pitcher
2008	John Udelhofen	Whitehall	Pitcher
2009	Gert Wilcziek	Beloit	Pitcher / Promoter
2010	Norval "Bud" Renley	Marengo	Pitcher
2011	Mark Stevens	Beloit	Promoter
2012	Norm "Mouse" Beckius	Whitelaw	Promoter
2013	Cliff Troullier Ealine Troullier	Whitelaw	Promoter Pitcher / Promoter
2014	Gene Mason	Appleton	Promoter
2015	Tom Steinke Rudy Van Fleet	Eagle Columbus	Promoter Promoter

** Honorary Hall of Fame Member

Country Kitchen
RESTAURANT

A place like home...
(608) 348-3041
Bus & RV Parking
Breakfast Anytime

DQ

Grill & Chill®

(608) 348-8560
Drive Thru

Wi-Fi

www.PlattevilleEats.com
Bus. Hwy. 151, Platteville, WI

VISA DISCOVER

PV338934

Jimmy Paulson, PUBLISHER
262-215-4001 jimmya2@hotmail.com

Julie Paulson, LAYOUT/EDITOR
262-215-7065 julie_p_2007@yahoo.com

Jim Haupt, EDITOR/STAFF
5075 N Elkhart Ave, Milwaukee WI 53217
414-964-2735 hauptjim@yahoo.com

Jane Smith, FEATURES/SUBSCRIPTIONS
1481 180th Ave, Balsam Lake WI 54810
715-485-3057 kirbys007@centurytel.net

Terry Sternberg, WEBMASTER/STAFF
262-677-3300 whpaweb.ts@live.com

Contributing Writers

THANK YOU!!

Pam Aiken
Glenn Bogenschneider
John Dolezel
Cliff Erickson
Ray Groskinsky
Jim Haupt
Ken Heinritz
Ken Jaeger
Loren Lacey

Wayne Lemar
Mark Mauthe
Norm Mauthe
John Meyer
John Olson
Earl Paulson
Jimmy Paulson
Julie Paulson
Jane Smith

Sponsored By:

Chet's Car Care of Madison, WI

Submissions deadline for our next issue is
Sept 15
WHNL2@HOTMAIL.COM

WHPA Officers

Glenn Bogenschneider, PRESIDENT
1310 Oak Tree Court, Slinger WI 53086
262-297-1378 gdbogen@yahoo.com

Jane Smith, 1st VICE PRESIDENT
(see above, Features & Subscriptions)

Eddie Wheeler, 2nd VICE PRESIDENT
W9870 Co Hwy K Lodi, WI 53555
Ecwsfw@aol.com 608-592-4424

Sonia Cook, 3rd VICE PRESIDENT
DIRECTOR, JR. SCHOLARSHIP FUND
D 1483 2nd St. Stratford, WI 54484
715-384-5540 cook_sonia@yahoo.com

John Secord, SECRETARY-TREASURER
W6868 Brown Rd, Fond du Lac WI 54937
920-922-0080 whpajs@charter.net

Jeff Secord, HALL OF FAME CHAIR
W2805 Johnsborg Rd, Fond du Lac, WI 54937
920-795-4171 jeffsecord@outlook.com

Ken Heinritz, WHPA CHAPLAIN
N95 W22107 Cty Rd Q, Colgate WI 53017
262-255-7339 heinritzken@gmail.com

NHPA Staff

Beloit Horseshoe Club
NHPA GAME-RELATED SALES
640 Ravine Dr. Beloit WI 53511
608-365-9901 epauls@live.com

John Meyer, NHPA Regional Director
500 Martin Dr. Fond du Lac, WI 54935
920-921-2936 jhmey64@hotmail.com

Aleena Lepak, NHPA Jr. Promotion
D1483 2nd St, Stratford, WI 54484
715-650-0637 aleena_cook5@hotmail.com

On The Web

NHPA SITE: <http://horseshoepitching.com>
Email: info@horseshoepitching.com

WHPA SITE: <http://whpahorseshoes.com>
Webmaster: Heidi Poppe heidi.a.poppe@gmail.com

WHPA BULLETIN (YAHOO! News Group)
http://sports.groups.yahoo.com/group/whpa_bulletin
Administrator: Pam Aiken pamaiken@gmail.com

Recycling & Waste Collection

Faherty **INCORPORATED**

1120 Broadway • Platteville, WI 53818

608-348-9586 • 1-800-848-4591

**Buy a 6" Sub
& Med Drink
Get 2nd for**
Equal or Lesser Value

99¢



55 S. Water St.
Platteville / 608-348-5050

1800 Progressive Pkwy.
Inside Walmart / 608-348-4090
NO DOUBLE MEAT. NOT GOOD WITH OTHER OFFERS.
LIMIT ONE COUPON PER PERSON PER VISIT.
EXPIRES 10-15-16

"Where you always get built in quality."

**Eastman Cartwright
Lumber Co. & Building Centers**

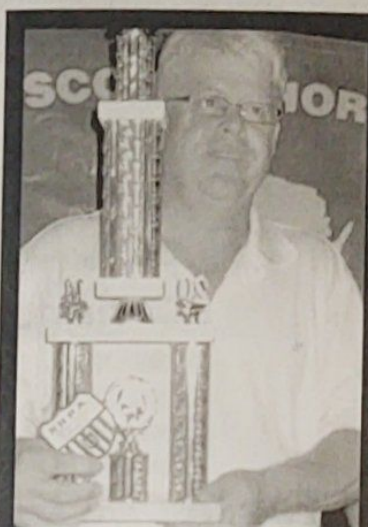
RESIDENTIAL • COMMERCIAL
AGRICULTURAL



ESTABLISHED
1940
YARDS AT
PLATTEVILLE
LANCASTER

350 E. Main
Platteville
348-2711

92nd Wisconsin State Champions



Randy Rein
Win #18!



Aleena Cook
Win #3!



Ron Button
Win #3!



Mason Bisch
Win #1!



Heather Feavel
Win #4!



Steven Lazaris
Win #4!



Brooke Lazaris
Win #3!

PIONEER LANES

PLATTEVILLE, WI

1185 Bus Hwy 151
Platteville, WI 53818

608-349-6631

Banquet Facility
Storage with climate controlled units
24 lanes of bowling all with bumpers
State of the art interactive scoring

YOUR ONE STOP FAMILY FUN CENTER



SUNRIDER
International

Regeneration is Real! We NOURISH and CLEANSE to reach BALANCE. These are non-GMO HIGHLY CONCENTRATED WHOLE FOOD CHINESE HERBS.

USA Company since 1982.

Mel & Diana Fogel, Independent Business Owners
2642 State Rd 81 • Platteville, WI 53818
(608)348-7574
www.sunrider.com • dianamarie25@hotmail.com



Nature's Comfort Outdoor Wood Burning Stoves • Built Heavy, Made To Last
www.outdoor-boilers.com

COMPLETE INSTALLATION OR DO-IT-YOURSELF

Buy your boiler
before the
EPA deadline!

Mel's Highway Sales, LLC
Mel & Diana Fogel
2642 State Rd. 81 N., Platteville, WI
(608) 348-7574

Truck PLAZA

Godfather's Pizza

Broasted Chicken

**Serving Breakfast,
Lunch & Dinner**

Wisconsin Cheese & Liquor
Fuel 24/7 • Diesel Fuel
Semi Parking

Hwy. 151 & 61 Frontage Road, Kieler, WI

Kieler Mall
Truck Plaza
Kitchen



(608) 568-7292
kielermalltruckplaza@yousq.net

PIONEER
Ford
SALES

1035 E Bus. Hwy 151, Platteville, WI
Mon. 8-7, Tue.-Fri. 8-5:30, Sat. 8-Noon

608-348-2409

**AMERICA'S BEST
SELLING TRUCK!**

30 YEARS
FORD
PREFERRED
DEALER

**BUILT
TOUGH**



MyPioneerFord.com

Wisconsin Men's Champions

1923	Forrest Mitchell	Wausauke
1924	Seymour Johnson	Madison
1925	Floyd Billings	Waukesha
1926	Harvey Elmeron	Milwaukee
1927	Harvey Elmeron	Milwaukee
1928	Harvey Elmeron	Milwaukee
1929	Harvey Elmeron	Milwaukee
1930	Harvey Elmeron	Milwaukee
1931	Harvey Elmeron	Milwaukee
1932	Harold Scheets	Waukesha
1933	Harold Scheets	Waukesha
1934	Harvey Elmeron	Milwaukee
1935	Casey Jones	Waukesha
1936	Casey Jones	Waukesha
1937	Casey Jones	Waukesha
1938	Casey Jones	Waukesha
1939	Casey Jones	Waukesha
1940	Casey Jones	Waukesha
1941	Harvey Elmeron	Milwaukee
1942	Casey Jones	Waukesha
1943	Harvey Elmeron	Milwaukee
1944	Casey Jones	Waukesha
1945	Casey Jones	Waukesha
1946	Casey Jones	Waukesha
1947	Mike Barschy	Milwaukee
1948	Casey Jones	Waukesha
1949	Tommy Bartlen	West Allis
1950	Casey Jones	Waukesha
1951	Casey Jones	Waukesha
1952	Casey Jones	Waukesha
1953	Tommy Bartlen	West Allis
1954	Casey Jones	Waukesha
1955	Earl Ramquist	Beloit
1956	Carl Pfeffer	Milwaukee
1957	Tommy Bartlen	West Allis
1958	Carl Pfeffer	Milwaukee
1959	Tommy Bartlen	West Allis
1960	Ed Schimek	Milwaukee
1961	Casey Jones	Waukesha
1962	Ed Schimek	Milwaukee
1963	Ed Schimek	Milwaukee
1964	Wally Saeger	Ixonia
1965	Tommy Bartlen	West Allis
1966	Carl Joppe	Green Bay
1967	Tommy Bartlen	West Allis
1968	Bill Glass	Vesper
1969	Bill Glass	Vesper
1970	Bill Glass	Vesper
1971	Bill Glass	Vesper
1972	Ralph Maylahn	Vesper
1973	Harold Scheets	Genesee Depot
1974	Bill Glass	Milwaukee
1975	Harold Scheets	Vesper
1976	Harold Scheets	Milwaukee
1977	Harold Scheets	Milwaukee
1978	Rick Pritzlaff	Germantown
1979	Bill Glass	Vesper
1980	Bill Glass	Vesper
1981	Bill Glass	Vesper
	Curt Bestul	Eau Claire

1982	John Udelhofen	Platteville
1983	Harold Bestul	Rosholt
1984	John Udelhofen	Platteville
1985	Carl Joppe	Green Bay
1986	Mark Stevens	Marengo
1987	Mark Stevens	Marengo
1988	Mark Stevens	Marengo
1989	Don Kangas	Marengo 11-0 67
1990	Randy Rein	West Allis 10-1 68.2
1991	John Udelhofen	Mosinee
1992	Don Kangas	Barneveld
1993	Randy Rein	West Allis
1994	Randy Rein	Mosinee
1995	Randy Rein	Mosinee
1996	Randy Rein	Mosinee
1997	Don Kangas	Mosinee
1998	Randy Rein	West Allis
1999	Mark Mauthe	Mosinee
2000	Randy Rein	Platteville
2001	Mark Mauthe	Mosinee
2002	Randy Rein	Platteville
2003	Randy Rein	Mosinee
2004	Randy Rein 7-0 57.71	Mosinee
2005	Mark Mauthe 7-0 64.9	Platteville
2006	Randy Rein	Mosinee
2007	Randy Rein	Mosinee
2008	Randy Rein	Mosinee
2009	Ken Heinritz	Mosinee
2010	Randy Rein	Menomonee Falls 6-1 62.97
2011	Randy Rein	Mosinee 7-0 62.05
2012	Randy Rein	Mosinee 6-1 59.82
2013	Randy Rein	Mosinee 7-0 53.91
2014	Randy Rein	Mosinee 7-2 52.63
2015	-Randy Rein 6-2 51.07	
2016	-Ken Heinritz 7-1 51.63	
2017	-Lanny Tronsgrud 7-1 56.65	
2018	-Jim Larson 7-1 60.12	
2019	-Jim Larson 7-0 64.58	

Wisconsin Cadet Boy's Champions

2007	Gunnar David	Marshfield
2008	Gunnar David	Marshfield
2009	Blake Lazaris	Colgate
2010	Steven Lazaris 6-0 13.35	Colgate
2011	Steven Lazaris	Colgate 6-0 26.74
2012	Nicholas Prasalowicz 4-1 21.67	Adams
2013	Steven Lazaris 7-0 38.64	Colgate
2014	Steven Lazaris 7-0 47.5	Colgate

Wisconsin Cadet Girl's Champions

2007	Mary Ann Aiken	Oak Creek
2008	Christina Heinritz	Pewaukee
2009	Abby Aiken	Oak Creek
2010	Abby Aiken 4-2 2.78	Oak Creek
2011	Brooke Lazaris	Colgate 5-0 56.7
2012	Brooke Lazaris	Colgate 6-0 76.9
2013	Brooke Lazaris	Colgate 5-0 47.85
2014	Brooke Lazaris	

BAKER IRON WORKS, LLC

Over 30 Years Experience



3131 Jentz-Baker Dr.
Platteville, WI 53818

(608) 348-7182

Jeff Baker

bakerironworks@yousq.net

The Trophy Shop

Tom Mann

*645 Grant Street
Platteville, WI 53818*

(608) 778-6997

*Plaques • Trophys
Engraving Awards*

Good Luck Wisconsin Pitchers!



American Bank

AMERICAN BANK & TRUST - WISCONSIN

Member FDIC

Simply Better Banking®

24 Hour Banking Line 744-FLAG

www.americanbankwi.com

130 McGregor Plaza Platteville
348-4300

100 N Main Cuba City
744-2125

235 N Madison Lancaster
723-5678

1925 Main Hazel Green
854-2251

1055 Lincoln Ave Fennimore
822-7300

**Personal - Business - Agriculture
Loans - Mortgages - IRA's**

Wisconsin Women's Champions

1969	Sella Dollevoet	Little Chute	1987	Debby Bestul	Eau Claire
1970	Marion Ristau	Combined Locks	1988	Debby Bestul	Eau Claire
1971	Marion Ristau	Combined Locks	1989	Renee Sternberg	Richfield
1972	Darlene Ebert	Fredonia	1990	Pam Steinke	Waukesha
1973	Darlene Ebert	Fredonia	1991	Heidi Sternberg	Richfield
1974	Darlene Ebert	Fredonia	1992	Heidi Sternberg	Richfield
1975	Darlene Ebert	Fredonia	1993	Heidi Sternberg	Richfield
1976	Pat Eaton	Eau Claire	1994	Penny Steinke	Waukesha
1977	Pat Eaton	Eau Claire	1995	Penny Steinke	Waukesha
1978	Pat Eaton	Eau Claire	1996	Penny Steinke	Waukesha
1979	Pat Eaton	Eau Claire	1997	Nicole Riehle	Auburndale
1980	Pat Eaton	Eau Claire	1998	Nicole Riehle	Auburndale
1981	Jane Smith	Balsam Lake	1999	Nicole Riehle	Auburndale
1982	Shary Klopp	Eau Claire	2000	Tava Cook	Stratford
1983	Shary Klopp	Eau Claire	2001	Tava Cook	Stratford
1984	Pat Eaton	Eau Claire	2002	Tina Riehle	Auburndale
1985	Pat Eaton	Eau Claire	2003	Tina Riehle	Auburndale
1986	Pat Eaton	Eau Claire	2004	Tava Cook	Stratford
1987	Jane Smith	Balsam Lake	2005	Aleena Cook	Stratford
1988	Jane Smith	Balsam Lake	2006	Kiri Cook	Stratford
1989	Jane Smith	Balsam Lake	2007	Aleena Cook	Stratford
1990	Jane Smith	Balsam Lake	2008	Aleena Cook	Stratford
1991	Edie McKinney	Luck	2009	Aleena Cook	Stratford
1992	Lorraine Sternberg	Richfield	2010	Bethany Heinritz	Pewaukee
1993	Lorraine Sternberg	Richfield	2011	Heather Feavel	Van Dyne
1994	Lorraine Sternberg	Richfield	2012	Heather Feavel	Van Dyne
1995	Lorraine Sternberg	Richfield	2013	Heather Feavel	Van Dyne
1996	Jane Smith	Balsam Lake	2014	Heather Feavel	Van Dyne
1997	Lorraine Sternberg	Richfield			
1998	Gert Wilcziek	Whitehall			
1999	Lorraine Sternberg	Richfield			
2000	Gert Wilcziek	Whitehall			
2001	Gert Wilcziek	Whitehall			
2002	Lorraine Sternberg	Richfield			
2003	Gert Wilcziek	Whitehall			
2004	Gert Wilcziek	Whitehall			
2005	Gert Wilcziek	Whitehall			
2006	Gert Wilcziek	Whitehall			
2007	Gert Wilcziek	Whitehall			
2008	Gert Wilcziek	Whitehall			
2009	Gert Wilcziek	Whitehall			
2010	Pam Aiken	Oak Creek			
2011	Gert Wilcziek	Whitehall			
2012	Aleena Cook	Stratford			
2013	Aleena Cook	Stratford			
2014	Aleena Cook	Stratford			

Wisconsin Junior Girl's Champions

1976	Nancy Mulry	Combined Locks
1977	Linda VanDeurzen	Combined Locks
1978	Nancy Mulry	Combined Locks
1979	Nancy Mulry	Combined Locks
1980	Nancy Mulry	Combined Locks
1981	Tammie Mattson	Menomonee Falls
1982	Debby Bestul	Eau Claire
1983	Debby Bestul	Eau Claire
1984	Debby Bestul	Eau Claire
1985	Debby Bestul	Eau Claire
1986	Debby Bestul	Eau Claire

Wisconsin Elder Men's Champions

1987	Sid Anderson	Janesville
1988	Royce Wruckle	Horicon
1989	Sid Anderson	Janesville
1990	Sid Anderson	Janesville
1991	C.L. Ollerman	Fond du Lac
1992	Ralph Maylahn	Genesee Depot
1993	Ralph Maylahn	Genesee Depot
1994	Ralph Maylahn	Genesee Depot
1995	Clayton Gage	Milltown
1996	Clayton Gage	Milltown
1997	Clayton Gage	Milltown
1998	Clayton Gage	Milltown
1999	Clayton Gage	Milltown
2000	Clayton Gage	Milltown
2001	Clayton Gage	Milltown
2002	Clayton Gage	Milltown
2003	Clayton Gage	Milltown
2004	Clayton Gage	Milltown
2005	Clayton Gage	Milltown
2006	Clayton Gage	Milltown
2007	Gene Mason	Appleton
2008	Vince Jakel	Spencer
2009	Paul Wilson	Janesville
2010	Norm Gage	Milltown
2011	Wayne Lemar	LaCrosse
2012	Ron Button	Waupaca
2013	Ron Button	Waupaca
2014	Ron Button	Waupaca

Bruce Shanley Realty

Real Estate Sales & Appraising

P.O. Box 91 • 120 East Main Street

Platteville, WI 53818

(608) 348-9614 • Fax (608) 348-8911



ERT-CON

Cellular Phones • Satellite TV • LCD & Plasma TVs
Computers • Electronics • and More!

LANCASTER

On The Square
(608) 723-4854

PLATTEVILLE

Bus. Hwy 151
(608) 348-8909

DARLINGTON

Next to Subway
(608) 776-8331



Team Uniforms • Jackets • T-Shirts • Sweat Shirts

(608) 348-7844

155 West Main Street • Platteville, WI 53818

HEER OIL CO. INC.

Distributor of Mobil Oil Products

325 Lilly St. • Platteville, WI

608-348-9726



Eric Cleveland, Agent
145 W. Main
Platteville, WI 53818
Bus: (608) 348-9637
Cell: (608) 348-9637

With life
insurance,
the benefits
live on.

There are also benefits now.

I'll show you how life insurance can come in handy for more immediate family needs. Like college. **GET TO A BETTER STATE. CALL ME TODAY.**

TASHNER

VISION CLINIC LLC

170 McGregor Plaza • Platteville, Wisconsin 53818

(608) 348-2515 • Toll Free: 1-877-244-2515

E-mail: tashnervision@yahoo.com

MICHAEL L. TASHNER, O.D.

WISCONSIN
OPT METRIC
ASSOCIATION

WISCONSIN
OPT METRIC
ASSOCIATION

State Farm Life Insurance Company, Hartford, CT • NY, NY • WI
State Farm Life and Accident Insurance Company, (License for NY and WI)
Bloomington, IL

1/15/99

Wisconsin Junior Boy's Champions

1973	Randy Pritzlaff	Germantown
1974	Tim Semingson	Elk Mound
1975	Tim Schommer	Combined Locks
1976	Bret Pritzlaff	Germantown
1977	Bret Pritzlaff	Germantown
1978	Bret Pritzlaff	Germantown
1979	Bret Pritzlaff	Germantown
1980	Kirk Bartnik	Mountain
1981	Bret Pritzlaff	Germantown
1982	Bret Pritzlaff	Germantown
1983	Hank Schwartz	Sheboygan
1984	Hank Schwartz	Sheboygan
1985	Hank Schwartz	Sheboygan
1986	Rich Weishoff	Portage
1987	Ken Jaeger	New London
1988	Ken Jaeger	New London
1989	Ken Jaeger	New London
1990	Mark Mauthe	Platteville
1991	Mark Mauthe	Platteville
1992	Mark Mauthe	Platteville
1993	Jason Goldsmith	Janesville
1994	Shannon Rein	Mosinee
1995	Jason Goldsmith	Janesville
1996	Wesley Rein	Mosinee
1997	Dustin 'Pudge' Dahl	Trempealeau
1998	Barrent Dahl	Trempealeau
1999	Barrent Dahl	Trempealeau
2000	Dustin 'Pudge' Dahl	Trempealeau
2001	Wesley Rein	Mosinee
2002	Kirby King	Stevens Point
2003	Nathan Heinritz	Pewaukee
2004	Ryan Hyatt	Racine
2005	Nathan Heinritz	Pewaukee
2006	Ryan Hyatt	Racine
2007	Nathan Heinritz	Menomonee Falls
2008	Beau Davison	Centuria
2009	Jacob Birch	Kenosha
2010	Gunnar David	Marshfield
2011	Gunnar David	Marshfield
2012	Gunnar David	Marshfield
2013	Gunnar David	Marshfield
2014	Mason Bisch	Baraboo

Club Team Champions

1985	Goldendale
1986	Pitchin' Palace
1987	Green Bay
1988	Janesville Moose
1989	Green Bay
1990	Wausau
1991	Platteville
1992	Platteville
1993	Windy Hill
1994	Goldendale
1995	Goldendale
1996	Goldendale
1997	Close Doesn't Count
1998	Goldendale
1999	Close Doesn't Count
2000	Close Doesn't Count
2001	Close Doesn't Count
2002	Kenosha
2003	Close Doesn't Count
2004	Close Doesn't Count
2005	Eau Claire
2006	Beloit
2007	Beloit
2008	Close Doesn't Count
2009	Beloit
2010	Close Doesn't Count
2011	Heinritz Clan
2012	Muskego Moose
2013	Deansville
2014	Muskego Moose
2015	Summit Ridge

State Tournament Team

1990	Eau Claire
1991	Close Doesn't Count
1992	Eau Claire
1993	Close Doesn't Count
1994	Goldendale
1995	Close Doesn't Count
1996	Close Doesn't Count
1997	Close Doesn't Count
1998	Marshfield
1999	Combined Locks
2000	Eau Claire
2001	Close Doesn't Count
2002	Eau Claire
2003	Eau Claire
2004	Eau Claire
2005	Eau Claire
2006	Beloit
2007	Close Doesn't Count
2008	Marshfield
2009	Little Bull Falls
2010	Marshfield
2011	Marshfield
2012	Marshfield
2013	New London
2014	Summit Ridge

Most Improved

2000	Tom Costa / Everett Stewart
2001	Kirby King
2002	Steve Kulow
2003	Dan Meindel
2004	Jane Smith
2005	Nathan Heinritz
2006	Nathan Heinritz
2007	John Brugger / Beau Davison
2008	Don Goldsmith / Gunnar David
2009	Kiri Cook
2010	Mark Gagon
2011	Lonny Trangsud / Gunnar David
2012	Linda Roeber / Christina Heinritz
2013	Ron Button / Emily Lazaris
2014	Ann Murray / Cailyn Trangsud



BELOIT HORSESHOE CLUB

Phone: 608-365-9901

Email: epauls@live.com

www.teamworldhorseshoe.com

www.beloithorseshoeclub.com

R. J. NEUMEISTER, D.D.S.



8 a.m. - 5 p.m. Mon. & Thurs
9 a.m. - 6 p.m. Tues.
8 a.m. - 12 p.m. Wed. & Fri.

M-220 McGregor Plaza
Platteville, WI 53818
(608) 348-3372



COUNTRY INN BY CARLSON
630 S. WATER ST. • PLATTEVILLE
608 348-7373 • FAX 608 348-4600
cx_pltt@countryinns.com
www.countryinns.com/plattevillewi



CLARE BANK

"We Can Do That!"

Member
FDIC



Main Location - Platteville, Wisconsin
608-348-2727

"Good Luck Horseshoe Pitchers"

345 W. Pine Street, Platteville, WI 53818	608-348-2727
3810 Dry Hollow Road, Kieler, WI 53812	608-568-3106
1 Wall Street, Montfort, WI 53569	608-943-6304
1701 Elm Street, Boscobel, WI 53805	608-375-4182
101 West Water Street, Shullsburg, WI 53586	608-965-4401
1290 Fourth Street, Fennimore, WI 53809	608-822-3521
475 Canal Street, Bloomington, WI 53804	608-994-2741
107 Nebraska Street, Muscoda, WI 53573	608-739-3148



RICHARD FINANCIAL RESOURCES

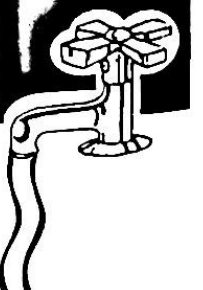
WEALTH BY DESIGN

JEFF T. RICHARD
INVESTMENT CONSULTANT

PO BOX 418 • 35-B SOUTH COURT STREET
PLATTEVILLE, WI 53818

Office (608) 348.4994 Cell (608) 331-7523 Toll-Free (800) 335.4994
Fax (608) 348.4997 jrichard@mfsinvest.com www.richardresources.com

Bill's Plumbing & Heating



Platteville, WI 53818

Bill Niehaus - Owner

Licensed • Insured • Affordable

608-348-5026 • Cell 608-778-1124

Septic • Water Softeners • Water Heaters
Air Conditioning • New and Remodeling Construction
Service and Installation

State Doubles Champions

1997	John Udelhofen / John Crook
1998	Ralph Maylahn / Tony Scrima
1999	Randy Rein / Gus Schram
2000	Lorraine Sternberg / Pam Aiken
2001	Lorraine Sternberg / John Crook
2002	Wayne Totten / Bun Carley
2003	Randy Rein / Jim Larson
2004	Gert Wilcziek / Ron Wilcziek
2005	Randy Rein / Jim Larson
2006	Penny Steinke / Dan Bloom
2007	John Udelhofen / Jim Larson
2008	Ryan Hyatt / Randy Rein
2009	Randy Rein / Norm Gage
2010	Jeff Gustafson / Ken Heinritz
2011	Tony Scrima / Pam Aiken
2012	Gert Wilcziek / Lonny Trangsrud
2013	Gert Wilcziek / Lonny Trangsrud
2014	Gert Wilcziek / Lonny Trangsrud
2015	Lonny Trangsrud / John Brophy

President's Award Recipients

1993	Ann Opsteen
1994	Curt and Beaty Bestul
1995	Jim Haupt / Susie Pritzlaff
1996	Dick Hansen
1997	John Secord
1998	Earl Paulson
1999	Ken Kosky
2000	Lorraine Sternberg
2001	Jane Smith
2002	**No award given
2003	Dave Forseth
2004	Bun & Shirley Carley
2005	Beloit Horseshoe Club
2006	Jeff Secord
2007	Pam Aiken
2008	Ken Heinritz
2009	Terry Sternberg
2010	Ed Wheeler
2011	Kevin Brekke
2012	Tom Steinke
2013	Edie McKinney
2014	Mark Mauthe

Pitcher of the Year

1990	Bob Jackson
1991	Randy Rein
1992	Tom Steinke
1993	Ralph Maylahn
1994	Randy Rein
1995	Randy Rein / Lorraine Sternberg
1996	Lorraine Sternberg
1997	Clayton Gage
1998	Clayton Gage
1999	Ralph Maylahn
2000	Randy Rein
2001	Randy Rein
2002	Mark Mauthe
2003	Randy Rein
2004	Don Burmeister / Milt Larsen / Sue Lange
2005	Randy Rein
2006	Mark Mauthe / Rowen Swick / Tom Steinke
2007	Penny Steinke / Rowen Swick / Kevin Brekke
2008	Randy Rein / John Garvan / Jim Haupt & Ed Wheeler
2009	Randy Rein / John Garvan / Jim O'Loughlin
2010	Randy Rein / Rowen Swick / Jim Haupt
2011	Randy Rein / Jim Haupt / Tom Steinke
2012	Randy Rein / Kevin Brekke / Tom Steinke
2013	Ron Button / John Olson / Rondi Mengelt
2014	Glenn Bogenschneider / Tony Scrima / Greg Bergles

Scorekeeper of the Year

1997	Jane Smith
1998	Elly McCarn
1999	Edie McKinney
2000	Ralph Maylahn
2001	Gloria Smith
2002	Steve Stevens
2003	Kevin Brekke
2004	Jim Haupt
2005	Carol Crook / Sonny Cockcroft

DIGMAN CONSTRUCTION



Grain Elevator Construction

Service & Repair

Agricultural, Commercial & Residential

Bob Digman

- Sweet Manufacturing Company

- MC Dryer (Sales & Service)

- Millwright

- Concrete

Bus: 608-348-2231

Cell: 608-778-2088

Fax: 608-348-4875

- 3 - 40' All-Terrain Forklift

Email: digman@centurytel.net

- 24 Ton Crane

"SERVICE YOU CAN TRUST"

Tires and Brakes

Oil Changes

Alignments

Batteries

Exhaust Repair

Flat Repairs

Air Conditioning

Radiators and Heaters

Alternators

Check Engine Lights

Tune Ups

Engine Repairs

Shocks and Struts

- Courtesy Rides to Home Or Work
- Clean Comfortable Waiting Area
- Vehicle Pick Up



MY TIRES AUTO AND TRUCK SERVICE CENTER
5601 County Road D • Platteville WI 53818



608.348.9723

www.mytiresplatteville.com



FRAME & PAINT SPECIALIST

230 East Main Street • Platteville, WI 53818

Phone: 608-348-3168 • Cell: 608-732-3747

ED AVERKAMP, OWNER



My Local

HARDWARE Store!™

Real People. Real Help. Real Close.™

Heiser's ACE Hardware

Bottom of Main - Platteville

Be Wiser... Buy Heiser!

348-5231



Gary V. Bell
(608) 778-2214

Jason V. Bell
(608) 778-2381

BELL REAL ESTATE

AUCTIONS & APPRAISALS

85 North Elm Street ~ Platteville, WI 53818

Email: ckbell@centurytel.net (608) 348-4591 Website: www.ckbell.com

Guy's

(800) 772-5602

(608) 568-3257

www.guystruck.com



3405 County Road HHH

P.O. Box 60

Kielers, WI 53812

23 1/2 Hr. Service

Just Off 151/61/35 Gy Rd. N

Jeff's

MINI MART

Hwy. 81, Platteville, WI

(608) 348-3647

Mon.-Sat., 6 a.m.-10 p.m.
& Sun., 7 a.m.-10 p.m.



Weber Meats
Pop • Groceries
Beer • Ice Cream
Slush Puppies

Bait & Tackle
Available Year-Round

Melby Funeral Home & Crematory

A HISTORY OF CARING
ESTABLISHED 1865

MATT MELBY, Licensed Director

1245 North Water Street
P.O. Box 245
Platteville, WI 53818
www.melbyfh.com

Office: (608) 348-2121

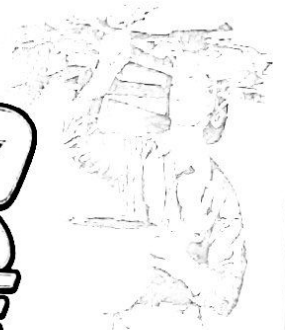


Ryan Kieler
Owner

P.O. Box 104
5530 County HHH
Kieler, WI 53812

Phone: 608.568.3366
Fax: 608.568.3887
E-mail: Lenspnt@pcii.net

AL'S AUTO SERVICE



210 E. Main St. • Platteville, WI 53818

(608) 348-2221

Leibfried Feed Service

315 Hwy 61 S. • Potosi, WI 53820
Potosi 763-2700

Cassville 725-5005 • Platteville 348-2721

The Areas Best Supply of Pet Foods
and Equine Feeds

Specializing in Custom Horse Mixes

16% Foal Feed

14% Horse and 12% Horse

Custom Calf Mixes

Specialized Show Feeds and Supplements

Blocks and Tubs

Huge Selection of Wild Bird Feed and Feeders

GARVEY SERVICE

Tune-Ups • Brakes • Exhausts • Tires
Oil Changes • General Repair

KEVIN GARVEY - Owner

80 West Main Street • Platteville, WI 53818

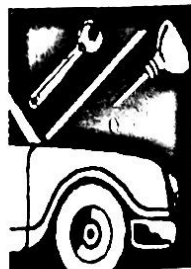
(608) 348-3939

"Your Full Service Station"

MVP SPORTS CUTS



608-556-8584
608-348-5130



WHITAKER REPAIR

140 North Oak
Platteville, WI 53818
(608) 348-4881

Bob Whitaker, Owner
Master Automotive Technician

Clayton Real Estate & Auction Services, Inc.

370 East Business Highway 151
Platteville, Wisconsin 53818

DON CLAYTON, SR

*Real Estate Auction
Is Our Specialty*

"Working For You Is My Business"

370 East Business Highway 151
Platteville, Wisconsin
Phone 348-8213 • Fax 348-8220

125 West Ann Street
Darlington, Wisconsin
Phone 776-8214 • Fax 776-8215

info@claytonrealtors.com

www.plattevilleareahomes.com
www.darlingtonareahomes.com

ARTHUR HOUSE

Restaurant & Comedy Club

Located 9 miles North of Platteville on Hwy 80

Open

Wednesday – Saturday

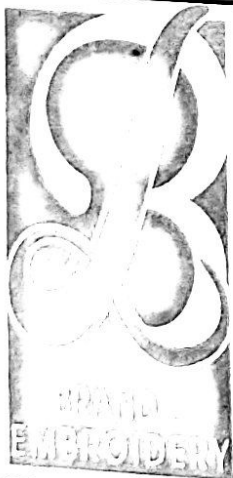
Sunday Brunch 10 a.m. - 2 p.m.

Closed Sun. p.m., Mon. & Tues.

Telephone

(608) 348-7899

www.arthurhouse.net



Offering embroidery & screenprinting

608-568-3200

2104 Kunkel Lane,
Kieler, WI

Design your own shirt at:

www.brandembroidery.com

SPRING-GREEN®

America's Neighborhood Lawn Care Team

The way you always wanted your yard to look!

Steven M. Peterson

Owner & Operator

P.O. Box 709 • Platteville, WI 53818

Office (608) 348-5336

Toll Free (866) 479-4749

Visit our web site at: www.spring-green.com

LAURA'S FLORIST

FLOWERS FOR ALL OCCASIONS

LAURA TIEDEMANN
FLORIST DESIGNER

7267 SHADY RD
PLATTEVILLE, WI 53818

(608) 348-7690



Sunset Lanes and Hall

"Your Fun Begins at Sunset"

Jonathan Schroeder

Owner and Operator

Phone: (608) 568-7999

jon@sunsetlanesandhall.com

410 South Main Street

Dickeyville, WI 53808

www.sunsetlanesandhall.com

2009 World Horseshoe Tournament - Springfield, IL

Final Game - Men's Championship

Alan Francis - OH

VS

Brian Simmons - VT

X	X			2	X	X		
X	-			4	X	1	1	1
X	X			6	X	X		
X	X			8	X	X		
X	-			10	O	X	3	4
O	X	3	3	12	X	-		
X	X			14	X	X		
X	X			16	X	X		
X	X			18	X	X		
X	X			20	X	X		
O	X	3	6	22	X	-		
X	X			24	X	X		
X	X			26	X	X		
X	X			28	X	X		
X	-			30	O	X	3	7
X	-			32	O	X	3	10
X	-			34	O	X	3	13
X	X			36	X	X		
O	X	3	9	38	X	-		
X	X			40	X	X		
X	X			42	X	X		
X	X			44	X	X		
X	-			46	O	X	3	16
X	X			48	X	X		
X	X			50	X	X		
X	-			52	O	X	3	19
X	X			54	X	X		
X	X			56	X	X		
X	X			58	X	X		
X	X			60	X	X		
X	X			62	X	X		
X	-			64	O	X	3	22
X	X			66	X	X		
X	X			68	X	X		
O	X	3	12	70	X	-		

X	X			72	X	X		
X	X			74	X	X		
X	X			76	X	X		
X	X			78	X	X		
X	-			80	O	X	3	25
X	X			82	X	X		
X	X			84	X	X		
X	X			86	X	X		
O	X	3	15	88	X	-		
X	X			90	X	X		
X	X			92	X	X		
X	X			94	X	X		
O	X	3	18	96	X	-		
X	X			98	X	X		
X	-			100	O	X	3	28
X	X			102	X	X		
X	X			104	X	X		
O	X	3	21	106	X	-		
X	-			108	O	X	3	31
X	X			110	X	X		
X	-			112	O	X	3	34
X	-			114	O	X	3	37
X	X			116	X	X		
O	X	3	24	118	X	-		
O	O	6	30	120	-	-		
X	X			122	X	X		
X	X			124	X	X		
X	1	1	31	126	X	-		
O	X	3	34	128	X	-		
X	X			130	X	X		
O	X	3	37	132	X	-		
X	X			134	X	X		
X	X			136	X	X		
X	X			138	X	X		
O	X	3	40	140	X	-		

Francis		Simmons
40	Score	37
126	Ringers	125
140	Shoes	140
90.00	Percent	89.28

93rd Wisconsin State Horseshoe Tournament

September 5-7, 2015 Platteville, WI

MEN'S CHAMPIONSHIP - SUNDAY - 1:30 P.M.

Randy Rein D.C.	Mosinee
Ken Heinritz	Colgate
Lonny Trangsrud	Eau Claire
Nick Muller	Cuba City
Tory Jeske	Frederic
Jeff Gustafson	Burlington
Winner of Men's Class A	
High % Men's Class A	

MEN'S CLASS E - SATURDAY - 11:00 A.M.

60.75	Eddie Wisniewski	Merrill	26.16
60.00	Scott Dailey	Platteville	25.07
54.04	Kevin Brekke	Edgerton	23.14
53.82	Richard Conrad	Pewaukee	22.30
52.26	Ed Wheeler	Lodi	21.91
50.92	Randy White	Brooklyn	21.14
	Greg Bergles	Union Grove	20.65
	Tom Steinke	Eagle	20.40

MEN'S CLASS A - SATURDAY - 8:00 A.M.

Dean Chaffee	Chippewa Falls
Mark Mauthe	Platteville
John Meyer	Fond du Lac
Les Karpel	Chetek
Pete Harris	Melrose
Jarrold Bisch	Baraboo
Ray Groskinsky	Friendship
Jim Harris	Melrose

MEN'S CLASS F - SATURDAY - 3:00 P.M.

50.66	Russ Brockway	Seneca	18.71
50.00	Kevin Aarstad	Janesville	18.46
47.46	David Palmershiem	Franksville	16.66
46.41	Mike Berdan	Stratford	16.59
45.85	Stan Fredrickson	Eau Claire	14.77
45.67	Rob Tilton	Lake Geneva	11.25
44.57	Steve Mengelt	Beloit	5.79
43.42			

MEN'S CLASS B - SUNDAY - 8:30 A.M.

Kevin Peterson	Burlington	43.07
Kerry Morris	Watertown	40.98
Jason Villwock	Stevens Point	40.38
David Volz	Wonewoc	40.12
Rich Brockway	Holmen	38.36
Jeff Mauthe	Platteville	37.85
Dave Torrey	Amherst	37.81
Gary Volz	DeForest	37.60

WOMEN'S CHAMPIONSHIP - SUNDAY - 1:30 P.M.

Aleena Lepak D.C.	Edgar	64.68
Penny Steinke	Waukesha	68.12
Linda Roeber	Janesville	49.89
Toni Sloper	Milltown	46.11
Winner of Women's Class A		
High % Women's Class A		

MEN'S CLASS C - SATURDAY - 12:00 P.M.

Bob Kallstrom	Arkansaw	37.30
Mark Rice	Waupaca	35.87
Rick Weller	Baraboo	35.30
Joel Ramsdell	Pell Lake	34.66
Russ Heinritz	Waukesha	34.61
Rod Dailey	Platteville	34.49
Joe McCrossen	Nekoosa	33.89
Jim Tollefson	Janesville	33.50

WOMEN'S CLASS A - SATURDAY - 8:00 A.M.

Cindy Castellano	Milltown	44.88
Tava Kildahl	Port Edwards	42.27
Elaine Troullier	Whitelaw	39.62
Sonia Cook	Stratford	38.97
Kari David	Marshfield	30.73
Gloria Smith	Milltown	28.22
Joanna Hollenback	Baraboo	27.61
Tonya Kaulum	Eagle River	26.62

MEN'S CLASS D - SUNDAY - 8:30 A.M.

Bruce McLinn	Clinton	33.29
Michael Benzing Jr	Eagle River	32.33
Bob Cole	Porterfield	28.21
John Drexler	Marshfield	28.12
Randy Mitchell	Schofield	28.02
Dave Quaid	Burlington	27.66
Ralph Marthaler	Medford	27.07
Craig David	Marshfield	26.22

WOMEN'S CLASS B - SATURDAY - 4:00 P.M.

Rondi Mengelt	Beloit	26.15
Gloria Sheff	Platteville	24.78
Ann Murray	Beloit	21.66
Cecelia Trossen	Mountain	21.08
Dobie Gutweiler	Sun Prairie	15.13
Barb Ramquist	Hixton	9.21

JR BOYS & GIRLS CHAMP - SATURDAY - 3:00 P.M.

Mason Bisch D.C.	Baraboo	34.32
Gunnar David	Marshfield	57.83
Christina Heinritz	Pewaukee	37.50
Emily Lazaris	Colgate	35.45
Blake Lazaris	Colgate	28.43
Steven Lazaris	Colgate	24.00

CADET'S CHAMPIONSHIP - SATURDAY - 3:00 P.M.

Brooke Lazaris D. C.	Colgate	36.12
Nicholas Prasalowicz	Adams	19.72
Brandon Benzing	Eagle River	11.99
Blake Benzing	Eagle River	10.83
Aidan Ramsdell	Trevor	9.44
Krystal Lazaris	Colgate	8.00

93rd Wisconsin State Horseshoe Tournament September 5-7, 2015 Platteville, WI

ELDER'S CHAMPIONSHIP - SUNDAY - 1:30 P.M.

Ron Button D.C.	Waupaca	67.50
Jim Bilderback	Birchwood	64.57
Larry Grabowski	Cameron	63.46
Glenn Bogenschneider	Slinger	60.86
Norm Gage	Milltown	58.35
John Brophy	Galesville	56.19
Winner of Elder's Class A		
High % Elder's Class A		

ELDER'S CLASS A - SATURDAY - 8:00 A.M.

Galen Kozel	Mukwonago	56.08
Leo Richter	Stoughton	52.54
Bernard Carley	Richland Center	52.50
Dave Ninnenann	St Croix Falls	50.96
Dave Schorbahn	Independence	50.19
John McNeill	Suamico	44.67
Cal Pitel	Greenville	43.64
Tom Bird	Beloit	43.50

ELDER'S CLASS B - SATURDAY - 8:00 A.M.

John Brugger	Platteville	39.42
John Olson	Schofield	39.40
Jack Zane	Beloit	38.97
Tony Scrima	Waukesha	37.82
John Dolezel	Eau Claire	35.22
David Stakson	LaCrosse	35.00

ELDER'S CLASS C - SUNDAY - 8:30 A.M.

John Secord	Fond du Lac	34.64
Rudy Van Fleet	Columbus	34.39
Jerry Schroeder	Oxford	31.92
Rob Starck	Darien	31.55
Ron Ramquist	Hixton	25.25
Russ Burns	Janesville	21.88

JUNIOR'S CLASS A - SATURDAY - 12:00 P.M.

Gabe Burgin	Platteville	11.66
Cailyn Trangsrud	Eau Claire	8.46
Cole Trangsrud	Eau Claire	7.15
Andrew Brockway	Holmen	5.00
Becca Bisch	Baraboo	2.08

CADET'S CLASS A - SATURDAY - 12:00 P.M.

Sarah Chaffee	Chippewa Falls	6.54
Jader Kuchenbecker	Verona	4.95
Eliza Volz	DeForest	4.00
Lillyan Kildahl	Port Edwards	3.95
Bradley Benzing	Eagle River	2.77

Hall of Fame Awards: After conclusion of play on **Sunday** morning. Hopefully around 12:30 p.m.

Sunday afternoon classes could begin early provided there are no delays.

Please check in 1/2 hour before your scheduled start time.

Per WHPA Bylaws: all participants must have their last name lettered on the back of their shirt. Failure to comply will be a \$5.00 fine.

Ken Heinritz will be holding a **church service Sunday morning at 7:30 a.m.** in the Art Hall Building.

Championship classes will be 40 point games with exception being Cadet's championship will play 30 points or 30 shoes whichever comes first. All other adult classes will play 40 or 50 shoes as decided by the WHPA council.

Per WHPA Bylaws: trophies / plaques awarded. 1st & 2nd in a six player class and 1st, 2nd, & 3rd in an eight player class. **1st & 2nd place awards will be given to both boys and girls in the Championship Junior and Championship Cadet classes.**

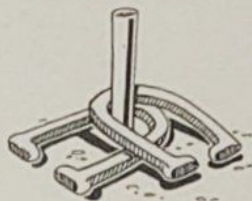
As a courtesy to all players class times and court assignments have been set up so that 30' and 40' players will always have one vacant court in between them. Exception being possible playoffs.

Platteville Country Kitchen is awarding \$5.00 gift certificates to the 1st, 2nd, 3rd, and 4th place finishers in all **adult** classes.

Food and refreshments will be available at the courts.

2015 State Horseshoe

Platteville
Horseshoe
Association



Beloit
Horseshoe
Club

Championships

The officers and members of the two clubs are honored to be the hosts of the 2015 Wisconsin State Horseshoe Championships. We welcome people to the fine city of Platteville and have made efforts to see that your brief stay is an enjoyable one.

While here please take time to patronize the establishments that helped sponsor your tournament and thank them. Good pitching to all contestants and thank you for entering!

THE PLATTEVILLE HORSESHOE PITCHING ASSOCIATION

Mark Mauthe - President
Norm Mauthe - Vice President
Mel Flogel - Secretary
Tom Hamm - Treasurer

THE BELOIT HORSESHOE CLUB

Norm Beckius - President
Ken Beebe - Vice President
Carl Schliem - Secretary / Treasurer
Earl Paulson & Jim Huckabee - Sanctioned League Directors
Board of Directors: Norm Beckius, Carl Schliem, Ken Beebe, Jimmy Paulson, Earl Paulson,
Jim Huckabee, Bruce McLinn, Dan Lessman, Ed Bonebright