

# ❖ WISCONSIN HORSESHOE NEWSLETTER ❖

AN AWARD WINNING PUBLICATION

NOV-DEC 1996

## WHPA TO HOST STATE DOUBLES IN 97

In a surprise move at the WHPA Fall Meeting the four officers of the WHPA agreed to act as hands-on directors for the first tournament to be known as the Wisconsin State Doubles.

Some methods of play were discussed including the question of mixed classes, possibly walking doubles, and whether to employ a type of team percentage cap. One method of proposed entry would limit by a low end rank total to be set by the tournament committee. (Each pitcher is ranked in numerical order in the year end listing.) Earl Paulson, although not present had set the stage for a State Doubles tournament by leasing the Edwards Sport Center in Beloit for four consecutive weekends.

After hearing various constructive comments, the board, now being the directors, felt they could better solve the format question in closed session, promising full disclosure early next year. Date of the State Doubles - April 27.

A large house of 46 members met at the Royal Wood Sport Center for the WHPA Fall Convention.

John Secord offered the short version of the treasurer's report saying he spent just sixty-three cents since last time. The present WHPA bank balance is about \$5000 and including juniors the membership numbers 520.

Jane Smith brought the news that the Badger State Games administration, in spite of the petition list, has chosen to add Martial Arts to their itinerary instead of horseshoes.

Lorraine Sternberg announced the grand recipient of earned scholarship funds to date is Penny Steinke of Waukesha. She will shortly be eligible to receive \$1200. The Scholarship Fund has assets of over \$10,000 with liabilities of \$4000.

It's official, Lorraine, who has held the coordinator position for eight years has resigned. An appreciative audience applauded her excellence in service not knowing at the time that Tom Steinke of the Muskego Club would agree to accept and carry on as new coordinator.

Terry Sternberg revealed he has been in contact with the Milwaukee Sport Show exhibitors group. Availability of space to non-profit associations will not be known until early next year providing little lead time in the event the WHPA would elect to stage another promotional display. The facts that; it is a ten day show, requires a capital outlay of \$600, and falls at the time of the Spring Meeting, dissuaded the membership from considering serious participation.

Jim Haupt advocated adopting a new policy of issuing sanction certificates for those special tournaments limited to 'club members only'. Clubs were asked to confine those special requests to one per year, emphasizing that there is no limit to the number of open tournaments a club may wish to sanction.

Hall of Fame Chairperson, Susie Pritzlaff, regretfully sent word of her resignation. With some persuasion, Edie McKinney accepted to carry on the position. Jeff Secord volunteered to replace McKinney's vacancy on the selection commission.

Members turned down a proposal to sponsor a second team at the TEAM-WORLD tournament (21/14); then clarified existing sponsorship to include the four top percentage pitchers in the state.

## REFLECTIONS

### 96 STATE TOURNAMENT

by Jane Smith

As tournament director for the 96 State Tournament, I would like to THANK everyone who helped make the tournament a great success. The tournament seemed to run smoothly with very few tough decisions or situations needing the tournament committee's judgment. Scorekeepers chairs were, at times, on demand. There was usually a list of people willing to relieve those who needed a break. Pitchers did their own judging so a judge was called very seldom. Registration was handled efficiently and orderly so classes started and finished according to the time schedule. The food stand featured tasty treats for all. The weather cooperated wonderfully in giving us plenty of sunshine and warm temperatures - at times too warm -but it beats the alternative.

This was the first venture with two organizations co-hosting the event. The Eau Claire Club was cooperative above and beyond any stretch of the imagination. Their expertise in past top notch tournament management certainly gave us great examples. They were more than willing to share ideas and workers in setting up the tournament. Several meetings were held throughout the year with club responsibilities discussed and settled on. People volunteered for certain jobs and handled them with great professionalism. It was truly a community effort as many people were involved in the ground work of completing signs, name tags, trophies, charts, round robins, scoresheets, etc... the list is endless.

The championship classes scheduled for late Sunday afternoon were an interesting and entertaining climax to the tournament. There were plenty of spectators around to see the best of Wisconsin pitch ringer after ringer.

The pitchers assumed responsibility of paying the scorekeepers, which helped stretch our work force a bit. This also eliminated the large amount of cash on hand necessary to pay scorekeepers. We didn't feel secure assuming responsibility for nearly \$1300 cash while we were staying in a motel for three nights.

It was nice to have the defending champions from last year help hand out the trophies to this year's various class winners.

In conclusion, THANK YOU Committee Chairpersons: Edie, Ellie, Joanne, Don, Ida, Sue, Gus, Ken, Jason, Curt, Beatty, dy, Al, Robert, Ruth, Jesse, Harry, Ernie. Another special THANK YOU to the Close Doesn't Count and Eau Claire Club members who worked diligently from sunrise to moon rise for two straight days doing whatever needed to be done! I can't find the words to express my appreciation of the work everyone did.

Are we ready to do this again?>

Without a word of a promotional message from either club and no inquiries from the membership, a State Tournament site for 1998. was selected. Eau Claire received 19 votes. Mountain counted 18 hands. Suddenly there were disbelievers. Written ballot? - No way, the vote was already a matter of record.

For the first time, in this writer's memory, the four members of the executive board raised their hands to vote...(2-2).

## WHPA OFFICERS

### PRESIDENT

Ken Jaeger Sr  
N3539 Knight Rd  
New London, WI 54961  
414-982-6287

### SEC-TREAS

John Secord  
W6868 Brown Rd  
Fond du Lac, WI 54937  
414-922-0080

### 1ST VICE PRESIDENT

Jane Smith  
1481 180th Av  
Balsam Lake, WI 54810  
715-485-3057

### 2ND VICE PRESIDENT

Terry Sternberg  
W206 N13520 Woodside La  
Richfield, WI 53076  
414-677-3300

### HALL OF FAME

Edith McKinney  
R1  
Luck, WI 54853

### SCHOLARSHIP FUND & JUNIOR PROGRAM DIR

Tom Steinke  
155 S Charles St  
Waukesha, WI 53186  
414-542-0252

### NHPA POSITIONS:

#### REGIONAL DIRECTORS

**Jim Haupt**  
5075 N Elkhart Av  
Milw., WI 53217  
414-964-2735

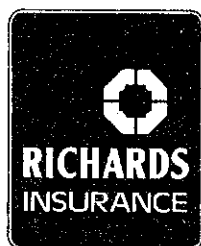
**Jane Smith**  
(add. above)

**Ken Jaeger**  
(add. above)

#### NHPA SEC-TREAS

**Richard Hansen**  
3085 S 76th St  
Franksville, WI 53126  
414-835-9108

DICK BURG  
Agent



46 E. JACKSON STREET ■ P.O. BOX 26 ■ HARTFORD, WI 53027  
BUSINESS PHONE 414/673-4440 ■ RESIDENCE PHONE 414/673-6979  
FAX 414/673-3124

## WISCONSIN HORSESHOE NEWSLETTER

This area is usually reserved for the Newsletter Masthead only omitted when we really need the space. This is one of those times. *With regret we are raising the Newsletter subscription fee \$1 per yr.* Production cost now is in excess of revenue received per issue. Note we have recently switched to first class mail no longer finding advantage to the new bulk mail rates. Don't mention bar-code to us unless you are equipped with a violin to accompany the long sad story.

You will note there are just two names connected with this Newsletter. We are *the* two people committed financially and otherwise to you and near 400 other subscribers.

Susie Pritzlaff, Editor/Publisher

Jim Haupt, Staff Writer

Published eight times annually

available for \$8/yr.

## OAKWOOD MALL TO RIDE AGAIN

Eau Claire must like it there. The club will again sponsor a mall demo of the fair art of horseshoe pitching.

The headliners, star performers will again be three time World Champion, Dale Lipovsky of Minnesota and Wisconsin's four time state champion, Randy Rein of Mosinee.

To further show that this iron tossing is not just for guys, a couple of the North-of -8 gals will also be asked show their stuff. **March 22 and 23**, the current and six time State womens champ, Jane Smith of Balsam Lake will go against former state champ, Edie McKinney of Luck. It has been said the women practically own the mall but it might just be the other way around.

For those guys not invited to put on a show at the Mall, there's always the **River Valley Rumble on the same date - Mar 22**. Team doubles, a set of two teams (four guys) will be on the docket at the Arena Sandbar. Look for Ron Berg's name on schedule

## WHAT'S HAPPENING

**DEC 14-15 SANTA'S SINGLES**; -Arena \$15 early or \$17 at cts  
Ron Berg RR1 Bx 86 Barneveld, WI 53507

608-924-5574 Limited to 96 **NHPA #28-96-037 D/L 11-30**

**JAN 11 110-01 DOUBLES**; Arena \$22/team or \$25 at courts  
Jim Haupt 5075 N Elkhart Av Milwaukee, WI 53217

414-964-2735 Pct cap 110% **NHPA #28-97-001 D/L 12-28**

**JAN 16-19 QUARTZITE, AZ OPEN** \$20 addl for A thru E

Gary Chalberg 13118 E 47th Dr Yuma, AZ 85367

520-342-0426 **NHPA sanc.**, send card #, limited to 192

**JAN 19-23 LAS VEGAS OPEN** \$65

Don Weaver 5025 So Eastern No 16 Bx 250 Las Vegas, 89119

702-736-7348 entry forms available; 414-964-2735

**FEB 8-9 FREEZEROO IV**; Arena \$15 early or at cts \$17

Ron Berg RR1 Bx 86 Barneveld, WI 53507

608-924-5574 Limit 96 **NHPA #28-97-002 D/L 1-25**

**MAR 8-9 JR SCHOLARSHIP OPEN**; Arena \$17

Lorraine Sternberg W206 N13520 Woodside Richfield, WI 53076

414-677-3300 Mixed **NHPA #28-97-003 D/L 2-22**

**MAR 15 SPRING MEETING- PLOVER 1:00PM**

Show-up to sign-up for doubles from 8:00 AM til Noon;

**MAR 22 RIVER VALLEY RUMBLE**; Arena team doubles \$48

Ron Berg RR1 Bx 86 Barneveld, WI 53507 (entry \$5 more at cts)

608-924-5574 4-man team limit 180%; **NHPA #28-97-004 D/L 3-8**

**APR 5-6 ARENA SPRING SINGLES**

Ron Berg would like some brave soul to take on this task

608-924-5574 **NHPA # 28-97-005 D/L 3-22**

**APR 26 CLUB TEAM** at Beloit \$80/team early entry or \$85 at cts

Jim Haupt 5075 N Elkhart Av Milwaukee, WI 53217

414-964-2735 **NHPA #28-97-006 D/L 4-12**

**APR 27 STATE DOUBLES TOURNAMENT** at Beloit

In developement; tournament committee will announce

format January 1997 **NHPA #28-97-007**

**MAY 3-4 THE BELOIT ENCORE** \$17

Earl Paulson 7105 So Co Hwy H Beloit, WI 53511

608-879-2304 **NHPA #28-97-008 D/L 4-19**

**MAY 16-17-18 TEAM-WORLD** at Beloit \$200/team

Earl Paulson 7105 So Co Hwy H Beloit, WI 53511

608-879-2304 **NHPA #28-97-009 D/L 4-12**

**KENOSHA**

Every year, it seems, the Kenosha Club improves their court layout. They now can accomodate short distance pitchers with continous concrete walkways. They were installed, by the way, by club members - in the city owned park. The Park commission helped this year finishing the adjacent parking lot. Great, the place looks nice but how will they ever add courts. Their five clay courts are surrounded by fixed objects.

Man in charge, Glenn Bogenschneider, announced the finish order of "A" awarding 3rd, then 2nd, but neglected to mention 1st. Turns out he was first! He won his own tournament on an otherwise dismal day. Take credit man, you just won an "A" class.

**THE BOGENSCHNEIDER PRESS RELEASE**

The 3rd annual Kenosha Open turned out to be old home week for the members of the Kenosha Club. All three classes were won by KHC members.

The "A" class saw Glenn Bogenschneider come back from a first game loss to win the rest of the way and claim first place.

The day started out sunny, turned cloudy and windy. First game we lost our tent. In the last "A" game, 'cloudy' was falling all over the pitchers and courts. However, as the games ended the sun was back out again.

This is certainly a good omen for next year. So, mark your calendars for the September Spectacular in Kenosha!!!

- A G Bogenschneider 40.7; Jim Haupt 41.1; Ralph Maylahn 40.5
- B Jim Ulrey 39.3; Linda Eber 35.6; Mike McDonald 29.6
- C Virgil Beckius 30.6; Everett Stewart 27.8; Ed Wheeler 22.1

**BELOIT DOUBLES**

For one of the last outdoor tournaments of the year, the Renley Courts of Beloit were loaded with doubles teams both the morning and afternoon shifts. That fair weather Saturday in late September was near perfect for shoe pitchin.' No rain, no heat, isn't Fall the really the best time of year? Seems a shame to move indoors.

We arrived about lunch time. Saw Ken Beebe cooking again - brats and hot dogs. Harry Laws was there. Bruce McLinn was working the counter. Russ Burns was doing something in the kitchen. Ken Lovaas was doing the big board. Mouse Beckuis was doing anybody he could. For the moment, they said, Earl Paulson was still down at the green market doing business in greens supposedly.

Paulson included the following remarks on the result sheet.

This was the largest Beloit doubles ever - 96 entrants in 8 classes. There were 36 non-sanctioned players competing, an opportunity to gain several new members for both Illinois and Wisconsin.

Again, the weather cooperated. In spite of daily predictions all week-long for rain on Saturday, it turned out to be a beautiful day - a good ending to a successful season.

- A 1st Jim Larson & Amy Abing; 2nd Larry Fettes & Dave Prestige
- B 1st Russ Burns & Earl Paulson; 2nd Ken and Georgia Beebe
- C 1st Bruce McLinn & Andy Renaud; 2nd Chuck Radl & Galen Kozal
- D 1st Don Burmeister & Ed Klauk; 2nd Ted & Rose Larson
- E 1st Bing & Alice Noltmeyer; 2nd Ron Knutson & Ed Haakinson
- F 1st Bob Hendrickson & Duane Woodard; 2nd Larry Stahl & Betty Hoffman
- G 1st Josh Erickson & Kim Grossen; 2nd Vic Paulson & Bud Wicks
- H 1st Steve Mathews & Don Withrow; 2nd Rick Hanson & Randy Miller

**110-01 SANCTIONED DOUBLES**



**SATURDAY JAN 11, 1997**

*110% pct cap = team total  
use State Tournament entry av.*

*All of \$22 entry remains in class  
(\$25 at the courts)*

**at THE ARENA SANDBAR**

*deadline 12-28*

**Jim Haupt**  
5075 N Elkhart Av  
Milw, WI 53217 414-964-2735



**WISCONSIN HORSESHOE  
PITCHING SUBDISTRIBUTORS**

*GAME RELATED ITEMS*

**Elaine & Cliff Troullier**

3126 Wagon Wheel Road, Manitowoc, WI 54220  
(414) 682-3197



*"Home of the 7-1/2 lb. Pizza"*

**Frank & Barb's  
COUNTRY INN**

*Downtown Le Roy*

Featuring the Country Inn's Famous Pizza — Custom Built To Your Taste!

- Sandwiches • Char Broiled Steaks
- Soups Daily • Friday Fish Frye

**FRANK & BARB DOHRWARDT** — Proprietors Closed Tuesday  
(414) 387-3311 - Mayville (414) 583-4534 - Oakfield 1-800-201-4534

## 1996 STATE CLUB TOURNAMENT

by Jane Smith

This is the seventh year the club competition has taken place during State tournament play. The Eau Claire club and Close Doesn't Count club have been the dominant winners over the years. Close Doesn't Count League has won three times, Eau Claire two times and Goldendale once. This year's competition was close as only 85 hundredths of a point separated the first and last clubs! That is good club competition. **Eau Claire** Horseshoe Club nudged out their co hosts, **Close Doesn't Count** League by 35 hundredths of a point for 1st place. The 27 Eau Claire pitchers had four champions and a club average of 5.85. Second place went to the 18 pitchers of the Close Doesn't Count League. They had 4 champions and a point average of 5.5. **Marshfield's** 11 pitchers, one champion, earned a 5.18 point average to edge out the Goldendale Club. The thirteen pitchers, one champion, from **Goldendale** had a point average of 5.153. **Beloit** also had thirteen pitchers, two champions and a point average of 5.07. First time entrant **Kenosha** had five members, one champion, with an average of 5 points. This is a fun way to promote club support and camaraderie. The winner has bragging rights for a year and a traveling trophy. They also receive money and free entry to the following years competition. All money is returned to the clubs after a few expenses are covered. All it takes to enter this competition is \$10.00 ( an increase) per club, a minimum of five pitchers, and a list of the pitchers and their classes. A letter is sent to all clubs during the summer. Entries are usually turned in during the State tournament. it would be fun to have at least 10 clubs participating in the 1997 State tournament. Thank you all for participating. Have a great winter enjoying the brisk fresh air and fluffy white snow we Wisconsinites are so fond of!



B Jordan Johnson, Chad Hunter, Jeremy Norlander, Jimi Larsen

## WET N WILD

28-96-030

by Jane Smith

The Weather report all week was rain, rain and more rain. Saturday dawned with sun so the fun began. Edie McKinney had the hot hand this tournament with an average of 73.94. This seemed to be the tournament of the undefeated as Tiffany Gage, Ida Hostrup, Claretta Hansen and Edie McKinney posted perfect records. Class A was filled with former state champions, and hall of fame members. It was a pleasure to watch these pros play. All classes seemed to have several pitchers who pitched better than their averages. What fun! Winners were rewarded with cash, newsletter subscriptions, and cans of World Tournament Pepsi donated by CDC World champions. The CDC people were still high from the State Tournament as many compliments were still being delivered. As usual, pitchers from Minnesota, Michigan and Wisconsin had a wild time pitching ringers in Centuria. Good times were discussed by many over supper at a local dining establishment. Come to our tournament: Guaranteed a great time!

A Edie McKinney 74%; Clayton Gage 74%; Edie Holland 63%  
 B Bubs Gedatus 52%; Rosie Leyk 57%; Sue Helene 52%  
 C Ida Hostrup 56%; Bill Schaaf 44%; Dick Dvorak 52%  
 D Tiffany Gage 57%; Harry McCartney 46%; Mike Hansen 39%  
 E Bill Hildebrand 42%; Gracie Reed 47%; Kathy Hanson 42%  
 F Claretta Hansen 37%; Randy Hansen 38%; B Knutson 36%  
 G Ray Mallo 37%; Dennis Kieser 33%  
 H R Mead 29%; T Jones 23%; P Mead 21%

The Class A juniors pitched with class H adults as their averages were higher than most other juniors. Junior B and C pitcher after the pot luck supper on Friday night. These kids sure get excited over a shoe that stays in the sand. They REALLY get excited when they pitch a ringer! Junior B and C were mixed with some 20 and 30 ft pitchers as our youngest pitcher is 5 years OLD! All juniors received trophies that have been donated by generous pitchers from both Minnesota and Wisconsin. Thank you for your generosity!

Jr A D Mead; A Mead; A Mead  
 Jr B J Johnson C Hunter, J Norlander  
 Jr C C S McConnel; J Larsen, J Chinander



C; Shawn McConnel, Julia Larsen, Jordan Chinander, JoHanria Alling

**ARENA NHPA—OCTOBER**

by tournament directors; Mark, Jeff and Norm Mauthe

A total of 64 pitchers participated in the Arena NHPA Fall Singles.

Class A went down to the last game with Randy Rein over John Udelhofen. Ringer count was 39 to 37 for the 50-shoe game. Dustin Dahl won the Junior class pitching way over his average while Chad Parchem, finishing third was about 20 percentage points over his average. In winning class B, Harry Nelson established his best ever tournament.

On Sunday, a certain pitcher, who just happens to be listed in the Madison Yellow Pages under 'Automotive Care,' had his Harley konk out at Black Earth. Paul Federer had to go get him in the car.

The ringers-only, no-scorekeepers, format was well accepted. Entry was held to \$15 and cash prizes through fourth place were generous. All pitcher played fifty shoes although there was one play-off game of 40 shoes.

Outdoor temperatures were warm on Sunday so that the air-conditioning was used in the afternoon. Thanks, Sports Arena, for your fine horseshoe facility equipped for all types of weather.

Jeff Mauthe ran the tournament on Saturday and Sunday afternoon. Norm Mauthe was up on Sunday helped by Tony Scrima.

- A Randy Rein 76.0; John Udelhofen 70.6; John Barden 62.0
- B Harry Nelson 55.7; Ralph Maylahn 54.3; John Crook 48.3
- C Julian Tijerina 44.9; Fred Decorah 39.1; Chris Dahl 41.4
- D Gerald Weikert 48.6; Bill Hagen 41.7; Chet Hermansen 38.6
- E John Gregorich 39.2; Bern Cockroft 32.6; Jerry Udelhofen 40.3
- F Bill Wordell 32.3; Paul Federer 33.7; Chuck Herman 29.7
- G David Miller 34.3; Gerald Dahl 30.3; Dean Baxter 23.1
- A- 30ft Carl Gilbertson 50.7; Alice Noltmeyer 32.7

**XMAS PARTY FOR HORSESHOE FOLKS**

Dick and Paulette Hansen are organizing a Christmas party for their favorite people - the horseshoe family. If you think you can't make it through the winter without the sight of your summer friends, here's your chance to check them out around Christmas time.

Dick and Pasulette have reserved space at the Fieldhouse, a fine pub and eating establishment in Caledonia, Wisconsin, on Saturday evening three days after Christmas for anyone who would like to come.

**DATE** Saturday, December 28, 1996  
**TIME** Coctails at 6:00 Dine at 7:00 PM  
**PLACE** The Fieldhouse, 7641 S Hy 38  
 2 miles So of Milw Co (little So of 7 mile Rd)  
**COST** \$12 per plate  
**R.S.V.P.** before Dec. 20 (s'il vous plait) 414-835-1321

**THE ARENA CONNECTION**

If you're a Wisconsin River Valley Rat, you can quit reading here. Other horseshoe types may be interested to know how to get on the roster for the Arena doubles events often hosted by Tip Wipperfurth or Carl Gilbertson. Use the phone. Give Tip or Carl a call. They may have openings or can make one. The un-sanctioned events may be scheduled as much as 3 weeks ahead - unable to publish schedule in the Newsletter. Try it.

WIPPERFURTH 608-849-4655 GILBERTSON 608-929-7699

**Fall Spectacular**  
28-96-033

Horseshoe pitchers from Minnesota, Michigan, and Wisconsin enjoyed the beginning of fall colors and cool weather. The early classes had sun and a bit of a breeze. The afternoon classes had a 30 minute rain delay. Games were shortened to 40 shoes and the games continued. Clayton Gage, also known as Whiney #1, lost only one game in claiming the tournament championship. Bill Hildebrand and Bud Nelson were the only two undefeated pitchers.

- Class A C Gage 76% E. McKinney 66% R. Rein 66%
- Class B D. Dvorak 47% D. Hostrup 53% G. Reed 42%
- Class C B. Hildebrand 45% G. Smith 38% B. Logsdon 45%
- Class D B. Nelson 40% R. Wright 42% R. Mallo 34%

**SOME 1997 OUTDOOR DATES SPOKEN FOR**

Some clubs have chosen outdoor tournament dates.

- May 10 EC Earlybird
- May 24; 25 Platteville
- May 31, Jun 1
- June 7-8 Wolf River
- June 14-15 Eau Claire
- June 21-22 Muskego
- June 28-29 Goldendale
- July 5-6 Wausau
- July 14-26 World

Others are urged to communicate. Indicate if yours will be a sanctioned event. All shown left are sanctioned.

The outdoor schedule for 1997 will be published in the second newsletter issue of 1997- March.

Write or call Jim Haupt with dates and patch order. 414-964-2735

**To the Hall of Fame Committee,**

*Just a brief thank you note;  
 I still find it difficult to comprehend my membership in the same Hall of Fame as those people listed in the 1996 State program. I did not know all the members names but being aware of many of the inductees, since I've been a state resident, and the tremendous impact they have had in the horseshoe community fills me with much pride but also a sense of humility.  
 A sincere thank you for the honor. Not only was it exciting to be inducted on the same day with my friend Jim, but it was also a distinct pleasure to be named to the Hall of Fame on the very day that 3 year old Daniel gave us a memorable rendition of our national anthem.*

Again, thanks

Howard Voiles

**SHIRLEY ZEISSE**

Shirley Zeisse of Caledonia passed away November 16, 1996. We knew Shirley as a tournament traveling companion to husband Ralph, and son Dennis, along with daughter-in-law, Gloria, and grandchildren. She was also a sister-in-law to Hank Zeisse and his wife Mike. We extend our sympathy to the entire family

## MUSIC CITY TEAM TOURNAMENT

An all Canadian team starting in low position in the ladder finals walked right through their matches to become 1996 Music City Team Champions. The team of Sylvianne Moisan, Sandy Janssens and Karen McLachlin with Tom Stroh on the sidelines proved to be the winning combination.

Because they carry such imposing averages, the Canadian provinces of Ontario and Quebec had to share the wealth. (Entry is limited to a 215% cap.) The other Canadians; Angeline Moisan, Steve Hohl, and Kevin McLachlin kept Andre LeClerc on hold. A team was three pitchers. LeClerc never saw any action.

As luck had it, both Canadian teams finished the 45 preliminary games the in a dead heat, tied in wins at 24 each and ringer percentage with an identical 69.11%. Emcee, Donnie Roberts breathed a sigh of relief. No need for a play-off; they would meet each other first game in the ladder finals.

It was, of course, the first finals win for the Canadian ladies. They went on to win each match in order by a 2-1 margin. Next victim was the Tennessee team of Max Griffith, Mar Ray, and Frank Jones who has the distinction of 'the last man in the finals.' Lois Webster, top pitcher in the house, together with Joan Elmore, and Paula Hunsicker were next to bow to the Canadians. A pattern had developed. When either Sandy or Sylvianne would lose, Karen would win! Finally they met the Minnesota gals, tournament leaders and heavily favored. Edie Holland came through but Phyllis Negaard, on the top of her game, lost to Sandy while World Champion Bev Nathe dropped it to Sylvianne.

(Apologies for all the first names but we thank Le Canadians' for at least being unique on the front end)

The Music City Team entry gets tougher by the year. Class lineups this year found some 'A' regulars in 'B.' Mary Bastian, tournament executive secretary, noted that there was just a 14% drop off separating classes. The Doc, Jack Freeman, wonders about his safety traveling through Kentucky after he disallowed some entries, although credible, did not fit. He was true to his word - to make the classes as competitive as possible within the team percentage limits.

The team horseshoes theme and the game itself got a big time boost this year as a result of the November Music City event. The club has engaged an upbeat publicity agent resulting in air-time interviews on Nashville radio, a really cool commercial, a try at a celebrity-pro/am event, and live radio onsite of the team event.

The Nashville radio station, known as the "Voice of the Grand Ol' Opry," carried a segment on a morning talk show hosted by a guy and a gal, interviewing Jack Freeman and the Music City club president, Paula Hunsicker in a promotional effort some time before the event. At the tournament itself, the radio personalities setup outside the horseshoe building away from the clinks and clanks to create interest with a live show and more interviews via cell-phone.

Willing sports, the radio couple tried their hand pitching horseshoes. It was a laugher. They adequately fulfilled the amateur part of the demonstration. Freeman and Hunsicker were the "pros." They kept score just for bragging rights when back on the air. Nashville horseshoe people are hopeful that this station

connection with the Grand Ol' Opry may provide other celebrities from country musicland for more of these publicity ventures.

It is not known to what degree the Music City publicity gal contributed to this recent rush of raves or will contribute in the future but isn't it invigorating to know that a small but progressive horseshoe club has engaged professional help.

The taped spot commercial featuring horseshoes and pumping for participation has the sound of a class A professional act. If it brings some results the sport will benefit in a place where it is most needed - the Jack Freeman house, soon to become the heart of NHPA competition.

Fred Rich, Mr Tuff-E-Nuff, the hands-on promoter, had two teams sponsored and/or signed up in the A division and offered \$500 to a team winning any class if they were 'Tuff' enough. His own team cashed to the tune of \$75 whereupon he became the first to enter next year's fracas.

Fourteen of the twenty-seven pitchers in the 'A' groups were female. Twelve of the the fifteen finalists were female. Three of the final teams were entirely female - they prefer their own kind. It's a fact. We have to admit it, female's averages are better. Art Tyson took the public address system for this departing remark, "Ladies..., ladies..., I will never ever lose to a woman again." It seemed a noble effort representing all mankind but a ladies voice popped up with, "Ya, Ya, Art, that's what you said yesterday."

They are talking about adding another day next November, when this event goes again, to accomodate the entries expected with more classes. A safer bet is, it will stay two days until more workers are recruited. Entering teams will have to be stronger. More will be turned away. Music City Team gets tougher every year.

### 'A' LADDER TEAMS

	<b>6th 24 ga won</b>	<b>66.06</b>
	Sue Snyder	79.00
	Art Tyson	81.50
	Fred Rich	37.67
	<b>7th 22 ga won</b>	<b>66.72</b>
	N.A. Moore	69.50
	Tommy Gann	73.33
	Paul Stewart	57.33
	<b>8th 20 ga won</b>	<b>67.72</b>
	Cliff Baker	72.83
	Jerry Dumstorff	64.83
	Bob Hatten	65.50
	<b>9th 20 ga won</b>	<b>64.44</b>
	Ron Powell	72.17
	Charlie Meredith	76.33
	Dave Loucks	44.83
	<b>10th 20 ga won</b>	<b>64.28</b>
	Alan Francis	76.33
	Amy Francis	73.17
	J. Fred Brown	43.33
	<b>11th 15 ga won</b>	<b>61.61</b>
	Chad Hyatt	64.00
	Dale Henry	55.67
	Ralph Guffey	65.17
	<b>12th 13 ga won</b>	<b>65.33</b>
	Jim Cooper	67.00
	Gary Roberts	67.83
	Elden Sarbaugh	61.17
<b>1st 32 games won</b>	<b>69.83%</b>	
Sylvianne Moisan	82.46	
Sandy Janssens	77.24	
Karen McLachlin	55.56	
Tom Stroh	44.50	
<b>2nd 34.5 ga won</b>	<b>75.94</b>	
Bev Nathe	81.06	
Phyllis Negaard	76.72	
Edi Holland	70.00	
<b>3rd 31 ga won</b>	<b>68.96</b>	
Lois Webster	82.66	
Joan Elmore	65.31	
Paula Hunsicker	58.91	
<b>4th 25.5 ga won</b>	<b>69.64</b>	
Maxine Griffith	78.75	
Marlene Ray	78.13	
Jack Freeman	47.50	
Frank Jones	54.09	
<b>5th 25 ga won</b>	<b>69.06</b>	
Angeline Moisan	74.38	
Steve Hohl	66.09	
Kevin McLachlin	66.72	
Andre LeClerc	no play	



**DOWN and BACK** with Jim Haupt

Sitting at the bar of the Royal Wood Sport Center waiting for the Fall Meeting to get underway, I had the chance to compare notes with the brass of the Eau Claire club; Randy Hansen, president, Harry McCartney, president-elect, and Rob Rehm, treasurer. It had been a long ride and Rehm was wondering if the meeting was going to be a just reward. "What are we going to fight about today?" he asked.

During the meeting, McCartney wondered why only two trophies were awarded at the State in the senior class. It was a six-man class, they said, classes have to be eight to warrant three trophies. Checked the results. Yep, McCartney was third.

First met McCartney at the Windy Hill tournament. He had only recently begun pitching shoes and already advanced to the 50% bracket pitching from the 30ft line.

Right now, the construction industry in Eau Claire needs pipe fitters, the like of McCartney. He is packing a lunch box again - for a while. As a retired union fitter, his working hours were formerly limited to protect the interests of his union brothers. Now that he's over 70 he can work all the hours he wants and pitch horseshoes from 30 ft in the bargain. This world needs more tough old birds like McCartney. No surprise that he was elected president of the Eau Claire Club.

DOWN AND BACK

Arnie Walton of Lodi strolled through "F" class pitching near 55% at Eau Claire - probably the most decisive win at the State Tournament. He did not complain that his picture wasn't printed with all the others in the results column. He merely asked, "Hey, how did the pictures turn out?" Is that why he's called "Grouchy?"

Some other winners also missed their pictures like Carmen Wozniak, Suring, John Crook, Spring Green, Steve Stevens, Marengo, and Scott Kater of Appleton. All we have to show for it is a credit slip from the film processor for \$1.68.

Our printer thought it was a great issue. He made an extra \$100 for those pictures. Not much danger of it happening again. The potographer quit. Said he was overworked and underpaid. Good thing - we were going to fire him anyway for running up our costs.

Hall of Fame lady, Ann Opsteen of Combined Locks pitched in the Championship class, her twenty-eighth consecutive State Tournament this year but was missing from the newsletter results column.

For all of the foregoing omissions and those to come, we humbly beg your pardon but promise to keep publishing anyway.

DOWN AND BACK

Tony Scrima and I checked out the new indoor courts at Deansville located off Hy 19 between Marshall and Sun Prairie. We saw a building separated from the main sports-bar setup for horseshoes and archery. It seemed about twenty feet longer than the four in-the-floor courts. They were filled with Chenoa clay but not wet down as yet. The entire north end of the building was covered with bales of shredded paper to stop the arrows. Looks like a great place for winter leagues or smaller tournaments.

**MUSIC CITY TEAM RESULTS CONT.**

B CLASS		C CLASS	
<b>1st 27 ga won</b>	<b>60.61</b>	<b>1st 28 ga won</b>	<b>52.17</b>
Dave Rose	47.00	Jack Hendersen	60.33
Donna Dodson	65.33	Mike Hendersen	52.17
Tina Tonnous	69.50	Debbie Tidwell	44.00
<b>2nd 23 ga won</b>	<b>56.83</b>	<b>2nd 25 ga won</b>	<b>53.17</b>
Milton Vinson	64.17	Jan Kreienkamp	53.50
Iris Sandham	62.00	Rich Altis	63.00
Jim Haley	44.33	Roy Evans	43.00
<b>3rd 23 ga won</b>	<b>55.50</b>	<b>3rd 24.5 ga won</b>	<b>45.44</b>
Amy Monday	72.83	Walter Mullins	61.33
Ricky Hall	56.00	Monty Roberts	56.00
Marvin May	37.67	Jim Culver	43.50
<b>4th 22.5 ga won</b>	<b>58.39</b>	<b>4th 23.5 ga won</b>	<b>51.44</b>
Al Morris	61.17	Bobby Holland	57.50
Bill Ungtheim	63.50	Jim Harris	50.00
Marlin Wells	50.50	Miichael Bryham	46.83
<b>5th 20 ga won</b>	<b>57.33</b>	<b>5th 17 ga won</b>	<b>48.11</b>
Rose Diekamp	67.50	Clayton Gage	75.33
Robert Diekamp	58.67	Jim Haupt	37.71
Calvin Jaeger	45.83	Ken Kosky	32.50
<b>6th 19.5 ga won</b>	<b>60.61</b>	Dick Hansen	32.19
Rich Pintor	71.83	<b>6th 17 ga won</b>	<b>45.44</b>
Steve Wyrill	58.50	Marvin Bastian	48.33
Allen Baptist	28.83	Pat Richardsorr	49.67
		Floyd Maxwell	38.33

**1997 NHPA CARD APPLICATION**

\$17 per adult membership after May 31, \$2 addl.  
 \$5 per junior membership

current card #.....new member? [ ]

circle division  
 men women junior 30ft elder

name.....

address.....

city state zip.....

check to WHPA; address, John Secord  
 W6868 Brown Rd Fond du Lac, WI 54937

**LAS VEGAS OPEN CHANGES LOCATION**

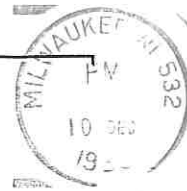
Don Weaver, the Las Vegas impresario, has promoted it again. He came up with a new location for the Vegas Open. San Remo Resort and Casino (next door to the Tropicana) has the welcome mat out. A huge climate controlled tent will house the horseshoe courts. They advertise, "From our 'Welcome' Reception to the awards banquet, you will receive 'Service You Can Bet On!'"

Weaver's word is clear. Please book your stay at the San Remo, the ultimate future of the Vegas tournament depends on it.

[see schedule, page 2, for details]

WISCONSIN HORSESHOE NEWSLETTER  
W204 N11912 GOLDENDALE ROAD  
GERMANTOWN, WI 53022

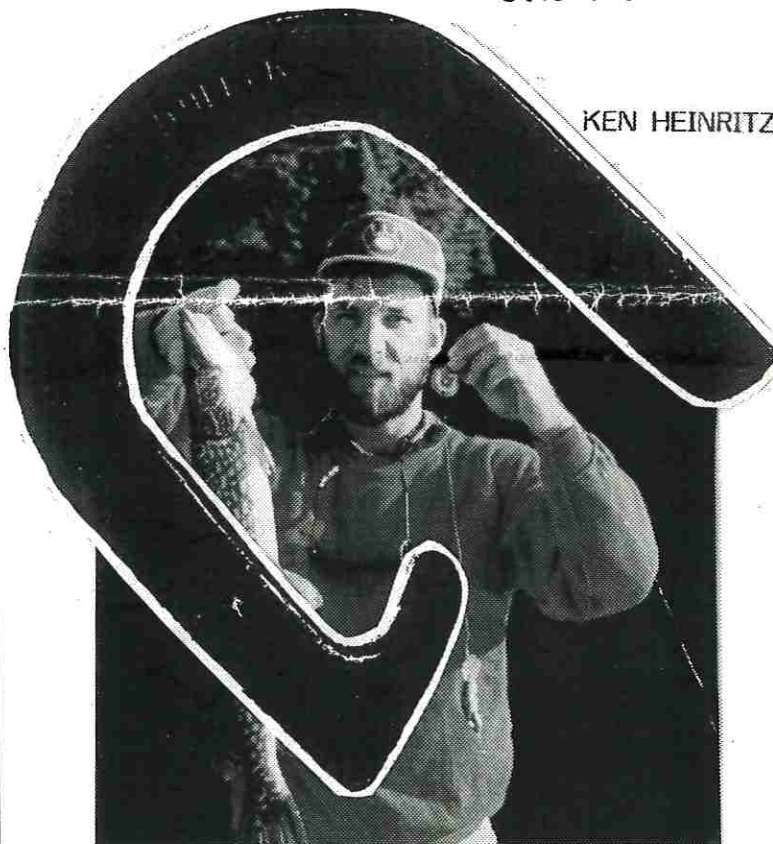
CC  
Jim Haupt  
5075 N Elkhart Av  
Milwaukee, WI 53217



# THE RINGLE-SINGLE

ONE HOOK WILL DO IT

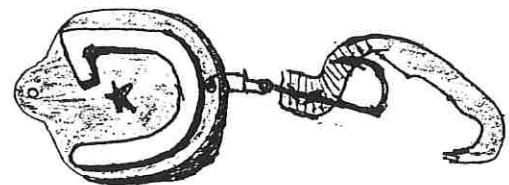
GONE FISHIN'



KEN HEINRITZ

Man does not live by bread alone, nor should horseshoes be our only passion. We have discovered that, like many horseshoe pitchers, fish prefer Ringle-Singles too.

Gus Schram has developed the R-S fish lure. Dress it with a twister tail, Cast it out with a high arc. Watch it wiggle, waver, dart through the shallows and sink to the deep. Ask for your R-S lure when you buy Ringle Singles. Enter the "Beat the Boss" fishing contest. Send picture of best fish taken on an R-S lure to Newsletter. No entry fee.



**RINGLE-SINGLE - The only horseshoe guaranteed to score with fish.**

Fully approved and sanctioned by the National Horseshoe Pitchers Assn.

Available through your NHPA sales representative

Designed and developed by Gus Schram, R7239 Hy Q, Ringle, Wi 54471