

# 182 RESULTS OF TOURNAMENT CHAMPIONS FOR 1978

The 1978 Wisconsin State tournament was played on the new courts in Berlin, Wisconsin, over last Labor Day weekend. Bill Glass, a veteran pitcher from Vesper, Wisconsin, won the coveted title with 7 straight wins and an average of 67.6 percent ringers. Pat Eaton reigned supreme in the Ladies Class A with 7 victories and 52.8 percent. Bret Pritzlaff was not to be outdone, he also went undefeated winning seven straight with 66.1 percent. Three trophies were awarded in each 8-man class. Nancy Mulry was undefeated to win the Girl's title.

**CLASS A** — Bill Glass, Vesper, 7-0-67.6; Harold Bestul, Rosholt, 5-2-58.0; Myrel Olsen, Appleton, 4-3-58.3; Roger Pout, Wausau, 4-3-55.6; Curt Bestul, Eau Claire, 4-3-56.6; Rick Pritzlaff, Germantown, 2-5-56.0; Earl Glasson, Cuba City, 2-5-42.6; Bob Wilke, Berlin, forfeit.

**CLASS B** — Wally Saeger, Ixonia, 5-2-54.0; Eugene Mason, Appleton, 4-3-52.6; Gib Gingras, Eau Claire, 4-3-53.7; Randy Bestul, Rosholt, 4-3-50.0; Don Henricks, Benton, 3-4-48.2; Archie Johnson, Eau Claire, 3-4-47.7; Norb Gossens, Neenah, 3-4-47.7; Wally Schmeckpeper, LaCrosse, 2-5-42.8.

**CLASS C** — Joe Gerrits, Combined Locks, 6-1-46.6; Don Stittleburg, Reedsburg, 5-2-47.0; Don Goldsmith, Janesville, 5-2-44.1; Felix Kubly, Watertown, 4-3-43.7; Francis Fogel, Platteville, 4-3-33.3; Mike McDonald, Eable, 2-5-34.1; William Oakley, Beloit, 2-5-28.2; Dick Goelz, Little Suamico, forfeit.

**CLASS D** — Wes Taylor, West Bend, 6-1-44.2; Kent Anderson, Eau Claire, 5-2-44.2; Wally Michaels, Waubesa, 5-2-38.2; Archie Johnson, Menomonee F., 4-3-35.0; Al Hanold, Green Bay, 3-4-37.8; Leonard Mauthe, Cuba City, 2-5-41.7; Swen Bowman, Mountain, 2-5-38.2; Al Brouillette, Milwaukee, 1-6-23.9.

**CLASS E** — Royce Wrucke, Horicon, 7-0-42.8; C. Christopolis, Sheboygan, 5-2-45.0; John Meyer, Fond du Lac, 5-2-37.5; Carol Boldt, N. Fond du Lac, 4-3-41.0; Joseph Dubnicka, Sussex, 4-3-37.8; Richard McGinnis, West Bend, 2-5-35.0; Larry Hoffman, Chippewa Falls, 1-6-26.0; Richard Hanson, Franksville, 0-7-28.2.

**CLASS F** — Gerald Rivera, Wautoma, 6-1-46.2; Tom Sherman, Milton, 6-1-42.5; Leigh Mattson, Eau Claire, 5-2-39.5; Fred Fegler, Racine, 4-3-31.6; Carl Bartels, Watertown, 3-4-31.2; Jerry Recheck, Waupun, 2-5-30.4; Bob Anderson, Eau Claire, 2-5-30.0.

**CLASS G** — Melvin Fogel, Platteville, 5-2-36.6; John Secord, Fond du Lac, 5-2-31.9; Daryl Guenther, Marshfield, 5-2-36.1; Steve Weigert, Green Bay, 4-3-39.9; Paul Breen, Oconomowoc, 3-4-34.2; David Klosterman, Ripon, 3-4-30.8; Chuck Koehn, Eagle, 2-5-34.2; Al McGowan, Milwaukee, 1-6-24.2.

**CLASS H** — Sid Anderson, Sr., Janesville, 5-2-34.9; Fred Zeilstra, 5-2-36.0; Chuck Goldapske, Fond du Lac, 5-2-44.9; John Milkint, Sussex, 5-2-37.1; Gary Bloedorn, Fond du Lac, 3-4-39.9; Erwin Penschorn, Woneewoc, 3-4-33.3; Ron Pritzlaff, Germantown, 2-5-29.4; Jim Redmond, Com. Locks, forfeit.

**CLASS I** — Jim Poquette, Hubertus, 4-1-40.8; Ed Crockett, Milwaukee, 3-2-44.2; Bud Kihnert, Fall Creek, 3-2-45.0; Ed Schuetz, Milwaukee, 3-2-44.7; Bernard Carley, Edgerton, 2-3-41.7; Greg Hein, Eagle, forfeit.

**CLASS J** — John Gomoll, Watertown, 7-0-36.6; J. Udelhofen, Platteville, 6-1-27.6; Lyell Gleson, Boyceville, 3-4-32.8; Gabby Appleman, Fond du Lac, 3-4-29.9; Pete Schelke, Stevens Point, 3-4-28.5; Ed Richardson, Platteville, 3-4-23.3; Eldon Eaton, Eau Claire, 3-4-21.8; Warren Bottlemey, Owen, 0-7-13.3.

**CLASS K** — R. Braman, Fort Atkinson, 7-0-37.2; Leon Voigt, West Bend, 5-2-28.3; Ed Hull, Waupun, 4-3-32.8; Dick Engmann, Marshfield, 3-4-32.2; Bob Hoekstra, Waupun, 3-4-31.1; C. Ollerman, Fond du Lac, 3-4-30.0; Clarence Voigt, West Bend, 3-4-25.6; Bob Udelhofen, Platteville, forfeit.

**CLASS L** — George Keuffer, Milton, 6-1-26.2; Roy Ruduechel, Egle, 6-1-29.5; Chris Kitti, Waukesha, 4-3-27.6; Mike Jmans, Sheboygan, 4-3-29.0; Jim Gaetz, Stevens Point, 4-3-17.1; Joe Hoffman, Ripon, 2-5-27.6; G. Gronowski, Oconomowoc, 1-6-19.0; Frank Hanold, Green Bay, 1-6-18.6.

**CLASS M** — Leon Uhl, Sheboygan, 6-1-32.2; Lefty Reich, Brown Deer, 5-2-26.0; Norb Nigbor, Green Bay 5-2-28.8; Harry Zuehlke, Com. Locks, 4-3-19.2; Del Phillips, Laona, 3-4-21.6; Tony Gaetz, Stevens Point, 3-4-19.9; Brit Gibby, Berlin, 2-5-17.2; Len Bennett, Cuba City, forfeit.

**CLASS N** — Ralph Schwartz, Fond du Lac, 6-1-23.8; Bill Matey, Appleton, 6-1-31.9; Melford Sorenson, Ripon, 4-3-25.7; Art Winkleman, Laona, 3-4-27.6; Duane Westfahl, Neenah, 3-4-21.9; Elmer Bigfire, Green Bay, 3-4-16.7; Richard Lange, Augusta, 2-5-20.5; Ken Wiedmeyer, West Bend, 1-6-17.1.

**CLASS O** — Lavern Flesch, Platteville, 6-1-25.0; Norman Mauthe, Platteville, 5-2-35.6; Carl Mattson, Germantown, 5-2-38.3; Tim Koehn, 5-2-32.8; Robert Eichstedt, Ripon, 4-3-32.2; Harold Hocking, Shullsburg, 2-5-15.6; Jerry Sherwin, Germantown, 1-6-19.4; Ken Voigt, Fillmore, forfeit.

**CLASS P** — Lavern Richard, Hazel Green, 6-1-21.8; Steve Koehn, 5-2-24.6; Dow Dowler, Fond du Lac, 5-2-22.3; Wilbert Blum, Janesville, 4-3-23.0; Ken Bjorkquist, Winneconne, 3-4-22.5; Herb Perleberg, Fond du Lac, 3-4-21.6; Marvin Guetzke, Germantown, 2-5-21.6; Jim Boettcher, Fillmore, 0-7-16.4.

**CLASS Q** — Jerry Punzel, Waterloo, 6-1-27.1; Dale Anderson, Marshfield, 5-2-23.7; Ed Wing, Germantown, 5-2-28.0; Larry Secord, Fond du Lac, 4-3-24.2; B. Udelhofen, Platteville, 3-4-26.1; Russell Thompson, 2-5-21.4; Bill Callisch, Edgerton, 2-5-15.2; Loren Pollesch, Milwaukee, 1-6-14.2.

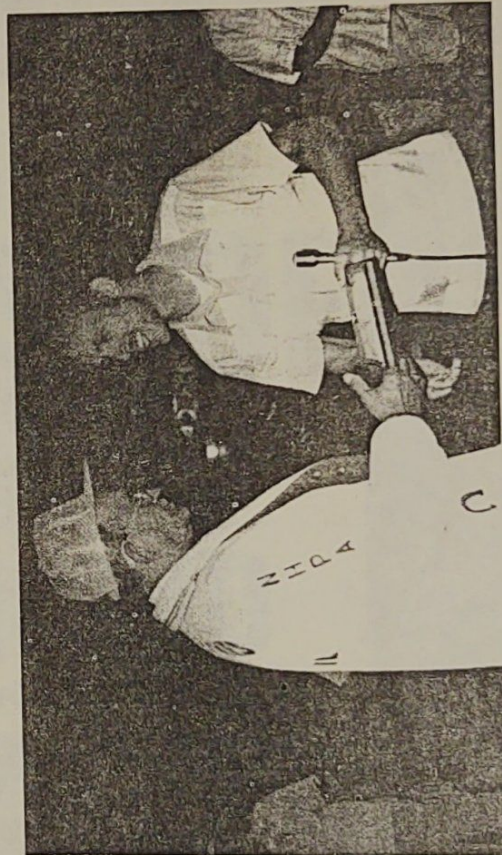
**CLASS R** — Bob Fiebelkorn, Beaver Dam, 6-1-16.1; Ed Ballwanz, N. Fond du Lac, 5-2-13.3; Bob Mattson, Menomonee Falls, 5-2-21.0; Jim Moore, N. Fond du Lac, 5-2-18.8; David Punzel, Lake Mills, 3-4-16.6; Irv Schroeder, West Bend, 3-4-15.0; Lloyd Cater, Plover, 1-6-14.4; William Wilson, Berlin, forfeit.

**CLASS S** — William Dubnicka, Germantown, 5-2-27.1; Don Wagner, Combined Locks, 5-2-27.6; John Anderson, Menomonee F., 5-2-21.4; Clarence Guenther, Marshfield, 5-2-29.0; Richard Polum, Stevens Point, 4-3-18.7; Rick Stone, Germantown, 2-5-14.3; Bernard Scherer, Boyceville, 1-6-8.9; Ilgvars Veldre, Jackson, 1-6-8.1.

**CLASS T** — Roger Schroeder, West Bend, 6-1-28.3; Dick Mackay, Germantown, 5-2-19.9; Thomas Weber, Jackson, 5-2-19.9; Daniel Ferch, 5-2-17.7; Dan Ebert, Fillmore, 4-3-17.7; Gary Mattson, Menomonee Falls, 2-5-10.5; John Callisch, Edgerton, 1-6-4.9.

The Horseshoe Pitcher's News Digest/April, 1979

12



Pictured is Ralph Dykes receiving an NHPA Achievement Award at the World Horseshoe Tournament in Des Moines, Iowa. The award is being presented by Donnie Roberts, NHPA Secretary/Treasurer. Ralph works extremely hard during the world tournament with charts and statistics. Ralph is a former NHPA president and has spent many years in promoting horseshoes and working for the National Horseshoe Pitchers' Association. He is a valuable source of information and statistics.





**1978** **BERLIN**  
**STATE HORSESHOE**  
**TOURNAMENT**  
**LABOR DAY WEEKEND**

**MEN, WOMEN, KIDS — Can you pitch 20% ringers? FOR ENTRY INFO. write to 199 Broadway, Berlin 54923 by Aug. 10. ENTRIES CLOSE AUG. 21.**