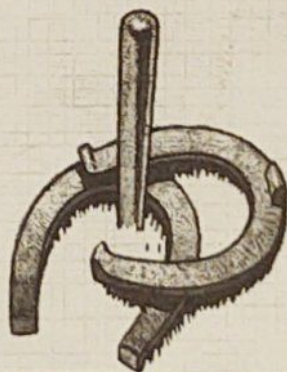


84th Annual

**STATE HORSESHOE
TOURNAMENT**



EAU CLAIRE, WI



September 2, 3, 4, 2006

Carson Park, Eau Claire



*Eau Claire City Council
Phone: (715) 839-4902
Fax: (715) 839-6177*

Welcome to Eau Claire!

On behalf of the City Council and the entire Eau Claire community, I extend a warm welcome to all participants in the 2006 Wisconsin State Horseshoe Pitchers Tournament.

We are delighted Eau Claire was again chosen as the site of this year's event. We appreciate this opportunity to share and showcase the fine horseshoe facilities we have in our community. I also want to thank the Eau Claire Horseshoe Club for all their hard work and hospitality in hosting this tournament.

We hope that while you are here you will have an opportunity to enjoy the many activities and attractions we have to offer, including the Recreation Trail along the Chippewa River, Carson Park, the Chippewa Valley Museum and Paul Bunyan Camp. I hope you have a chance to visit our downtown and all it has to offer, including our brand new Farmers Market, Phoenix Park and the Children's Museum of Eau Claire. Eau Claire offers a wide range of outstanding shopping, dining and family-oriented opportunities, and I hope you have a chance to sample all of them.

Best wishes for a successful tournament. Again, we extend to you the warmest of welcomes, hope you will take home many pleasant memories of this beautiful area and hope you will come back to Eau Claire again soon!

Dave Adler, President
Eau Claire City Council



CITY OF EAU CLAIRE

PARKS AND RECREATION DEPARTMENT

1300 First Avenue, Eau Claire, WI 54703-5287

Recreation Division: (715) 839-5032

Parks and Forestry Division: (715) 839-5039

Cemeteries: (715) 839-5039

www.eauclairewi.gov

September 2006

On behalf of the Eau Claire Parks, Recreation and Forestry Department, I would like to welcome all of you to Eau Claire, Carson Park and the 2006 Wisconsin State Horseshoe Tournament. We are very proud of the rich history that Eau Claire has in horseshoe competition. We have hosted many fine tournaments here including several State Tournaments and the 1987 and 2003 World Tournaments.

The Eau Claire Horseshoe Club has produced champions at the state and national level for many years. We hope you will find our facilities second to none. The Eau Claire Horseshoe Club, in partnership with our department, works very hard to maintain courts that are suitable for the top quality competition that you will find here this weekend.

During your stay here in Eau Claire, we hope that you will find time to visit the rest of Carson Park including the Chippewa Valley Museum and the Paul Bunyan Logging Camp. There are many other attractions including the Chippewa River State Bike Trail, the new Phoenix Park (host of the Saturday morning Farmers Market), high school and college football on the new artificial turf in Carson Park and the many great restaurants in Eau Claire. We hope you enjoy your stay and come back to visit us again soon.

Enjoy meeting old friends as well as making new friends this weekend. Good luck in the competition and have fun!

Sincerely,

Phil Fieber, Director
Parks, Recreation and Forestry

The Benefits are Endless

The Close Doesn't Count and Eau Claire Horseshoe Clubs are honored to act as Co-Hosts of the **84th Wisconsin State Tournament**. Ten years ago these same two clubs began the partnership in hosting this momentous event. We have worked hard to provide a quality tournament WHPA pitchers deserve and have made efforts to see that your stay in Eau Claire is an enjoyable experience. Of course, the more ringers pitched, the more enjoyable.☺ The actual competition is only part of the fun of this weekend. Visitors to Eau Claire this weekend are encouraged to patronize the advertisers in this booklet. With the help of these businesses, the Eau Claire Parks and Recreation Department, the Eau Claire City Council, the Eau Claire Horseshoe Club and the Close Doesn't Count Club, this should be a weekend filled with "priceless" memories and many ringers! Good Luck and many ringers to all.

The tournament committee members are Jim Emery, Elly McCarn, Rob Rehm, John Dolezel, Stan and Jeannette Fredrickson and myself. The Eau Claire organization has been extremely accommodating and willing to meet challenges head on. They are a group of organized, dedicated, horseshoe people. It has been a pleasure working on this committee of such talented people. This committee will evaluate and correct any questionable situation that may occur during this weekend tournament.

I sincerely thank the committee, the advertisers, the Eau Claire Community, all pitchers, scorekeepers, judges, court groomers, lunch stand workers, statisticians, and any other individual who has helped in making this tournament a "ringing" success! Please support the Arena Sandbaggers as they are hosting the 2007 State Tournament.

Appreciatively yours,

Jane Smith

Jane Smith, Tournament Director



Super 8 Motel of Eau Claire (west)
6260 Texaco Drive.
Eau Claire, WI 54703

Please call for a reservation: 715-874-6868
Fax: 715-874-6898

Location: Right off of Exit 59

From 29 or 53: Take 312-S North Crossing After
Hardee's. Take a right and 5 miles down.

Few Walking distance restaurants

Close drive to Carson Park for the
Horseshoe Tournament.

Pets allowed ONLY with permission
and \$10 fee/pet.

See You Along the Way!



Retirement is like a second childhood. Now, what do you really want to be when you grow up?

I am one of The Personal Advisors of Ameriprise Financial, the next generation of American Express Financial Advisors. I'll work with you one-on-one, face-to-face from day one to plan the retirement you want. Together, we can develop a customized financial plan to help you get to what's ahead in your life.

Call me today for a complimentary initial consultation.

Andrew Court, CLU®, CFP®
Senior Financial Advisor
CERTIFIED FINANCIAL PLANNER™ practitioner
1740 Brackett Ave
Eau Claire, WI 54701
(715)834-7280
Toll Free: 800-680-6948
Fax: 7(15)834-7659
andrew.j.court@ampf.com

The Personal Advisors of
Ameriprise 
Financial

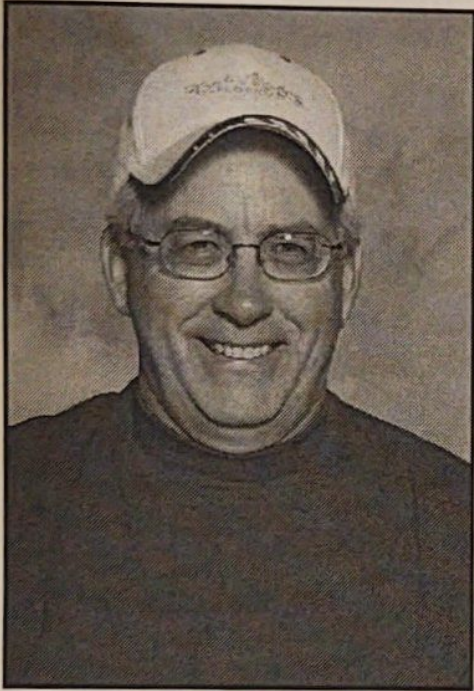
The Next Generation of
American Express Financial Advisors

The initial consultation provides an overview of financial planning concepts. You will not receive written analysis and/or recommendations. Financial advisory services available through Ameriprise Financial Services, Inc., Member NASD and SIPC, a part of Ameriprise Financial, Inc. Ameriprise Financial is no longer owned by the American Express Company.
© 2005 Ameriprise Financial, Inc. All rights reserved.

400037Z-14 10/05

2006 Hall of Fame Inductee

Terry Sternberg



Terry was born June 19, 1947 in Beaver Dam, Wisconsin. He is the oldest of six children and grew up on a farm. In 1970 he married Lorraine. Terry and Lorraine have three daughters, Renee, Heidi and Heather. All of who pitched as juniors and brought home many championship awards on both the State and World levels. They have four grandchildren, Alyssa (4years old), Caitlin (2 years), Kane (1 year) and their new grandson, Carter. Terry has been a union carpenter for over thirty years and is employed for John Beres Builders.

Terry started pitching in the Goldendale HSC in 1976, where he and Lorraine pitched on a doubles league. He currently serves as the club president and has been the club president for more than 12 years. He is also the tournament director for the Goldendale Tournament.

He has pitched in the Wisconsin State Tournament since 1986, without missing any and has pitched in the World Tournament since 1989. Terry, has served as the WHPA 2nd Vice-President since 1993 and has been a delegate for the WHPA at the NHPA conventions since 1993. He is also the WHPA Historian. In 1995 he organized the WHPA horseshoe exhibit at the Milwaukee Sentinel Sports Show. He currently serves on the WHPA Hall of Fame committee and the Team World committee. He built the Hall of Fame cabinet displayed in the club house for the Beloit HSC where the Hall of Fame currently exists.

Terry has been a great promoter for the sport of horseshoes. He recently spent time helping out with the set up of courts at Stoney Creek Campground in Osseo, WI. He has also helped to organize some tournaments in this area to promote opportunity to enlist new pitchers for our organization.

Terry is a very worthy, deserving, and caring person who will add real class to the WHPA Hall of Fame.

WHPA Officers

PRESIDENT

Tom Steinke
W343 S10062 Highway E
Eagle, WI 53119
(262) 594-5464
tomsteinke2004@hotmail.com

1ST VICE PRESIDENT

Jane Smith
1481 180th Ave
Balsam Lake, WI 54810
(715) 485-3057
kjjensmith@amerytel.net

2ND VICE PRESIDENT

Terry Sternberg
W206 N13520 Woodside Ln
Richfield, WI 53076
(262)677-3300
horshoewi@aol.com

3rd VICE-PRESIDENT

JR SCHOLARSHIP FUND
Sonia Cook
D1483 Second St
Stratford, WI 54484
(715) 384-5540
cook_sonia@yahoo.com

SEC-TREAS

John Secord
W6868 Brown Rd
Fond du Lac, WI 54937
(920) 922-0080
whpa@execpc.com

WHPA HALL OF FAME CHAIRLADY

Eddie McKinney
2339 205th St
Luck, WI 54853
(715) 825-2149

NHPA 3rd VICE-PRESIDENT Sanctioned Club/League Dir

Lorraine Sternberg
W206 N13520 Woodside La
Richfield, WI 53076
(262) 677-3300
horshoewi@aol.com

NHPA Sec-Treas

Richard Hansen
3085 76th Street
Franksville, WI 53126
(262) 835-9108
nhpa.sec.treas@worldnet.att.net

WHPA CHAPLAIN

Ken Heinritz
W170 N8448 Lloyd Ave
Menomonee Falls, WI 53051
heinritz103@hotmail.com
(262) 255-7339

WHPA WEBSITE

<http://members.tripod.com/whpa>
Webmaster: Heidi Poppe
hrpoppe@comcast.net

REGIONAL DIRECTOR

Ken Jaeger Sr.
N3539 Knight Rd
New London, WI 54961
(920) 982-6287
deershoe@athenet.net

NHPA WEBSITE www.horseshoepitching.com

NHPA Game Related Sales Director
Ken Kosky
6007 Municipal Street
Schofield, WI 54476
(715) 359-9898 nhpasales@ksfuel.com



Eau Claire Horseshoe Club Officers

President, Jim Emery
S8455 Cty Line Road
Mondovi, WI 54755
715-875-4816
repairman-je@wwt.net

Vice-President, John Dolezel
1710 Laurel Ave.
Eau Claire, WI 54701
715-835-2762

Treasurer, Rob Rehm
614 Grant Ct.
Chippewa Falls, WI 54729
715-720-9298
echc@cvol.net

Secretary, Elly McCarn
1911 14th St.
Eau Claire, WI 54703
715-835-8367
ellyern@webtv.net

Tournament Planners

Director Jane Smith
Souvenir Booklet Elly McCarn - Rob Rehm - John Dolezel
Trophies John Dolezel - Rob Rehm
Refreshment Stand Jeanette Fredrickson - Jesse & LaVonne Comero
Scorekeepers Elly McCarn - Edie McKinney
Shirt Sales Jeanette Fredrickson
Ad Sales Ron Dervetski, John Dolezel, Jim Emery, Stan Fredrickson
Tom Lind, Elly McCarn, Debbi Smith, Wayne Totten, Paul Wiese
Judges Dave Schorbahn - Paul Wiese
Court Maintenance John Dolezel - Dave Schorbahn
Result Board Pudge Dahl - Dennis Kieser
Registration Rob Rehm
Photographer/PA Dennis Kiesser - Ken Kosky
Publicity Stan Fredrickson

To the Business Establishments

On behalf of our tournament director & the Eau Claire Horseshoe Club, we would like to thank all of the businesses that placed ads in the State Tournament Souvenir Booklet. Your enthusiastic and continued support helps the club a great deal in our efforts to provide all pitchers in the State Tournament and their families a first class facility in which to compete, and a fun and friendly place to stay. Thanks again for your support.

Sincerely,



Souvenir Booklet Chairman



Co-Chairs



Welcome Horseshoe Pitchers!

Thank You Volunteers!

**Jim & Jay Ganther
The Ganther Company, LLC
832-4492**

*Helping Seniors Financially
for over 60 years!*



Club Team Champions

1985	Goldendale
1986	Pitchin' Palace
1987	Green Bay
1988	Janesville Moose
1989	Green Bay
1990	Wausau
1991	Platteville
1992	Platteville
1993	Windy Hill
1994	Goldendale
1995	Goldendale
1996	Goldendale
1997	Close Doesn't Count
1998	Goldendale
1999	Close Doesn't Count
2000	Close Doesn't Count
2001	Close Doesn't Count
2002	Kenosha
2003	Close Doesn't Count
2004	Close Doesn't Count
2005	Close Doesn't Count

Pitcher of the Year

1990	Bob Jackson
1991	Randy Rein
1992	Tom Steinke
1993	Ralph Maylahn
1994	Randy Rein
1995	Randy Rein / Lorraine Sternberg
1996	Lorraine Sternberg
1997	Clayton Gage
1998	Clayton Gage
1999	Ralph Maylahn
2000	Randy Rein
2001	Randy Rein
2002	Mark Mauthe
2003	Randy Rein
2004	Don Burmeister / Milt Larsen / Sue Lange

State Tournament Team

1990	Eau Claire
1991	Close Doesn't Count
1992	Eau Claire
1993	Close Doesn't Count
1994	Goldendale
1995	Close Doesn't Count
1996	Close Doesn't Count
1997	Close Doesn't Count
1998	Marshfield
1999	Combined Locks

2000	Eau Claire
2001	Close Doesn't Count
2002	Eau Claire
2003	Eau Claire
2004	Eau Claire

President's Award Recipients

1993	Ann Opsteen
1994	Curt and Beaty Bestul
1995	Jim Haupt / Susie Pritzlaff
1996	Dick Hansen
1997	John Secord
1998	Earl Paulson
1999	Ken Kosky
2000	Lorraine Sternberg
2001	Jane Smith
2002	**No award given
2003	Dave Forseth
2004	Bun and Shirley Carley

State Doubles Champions

1997	John Udelhofen / John Crook
1998	Ralph Maylahn / Tony Scima
1999	Randy Rein / Gus Schram
2000	Lorraine Sternberg / Pam Aiken
2001	Lorraine Sternberg / John Crook
2002	Wayne Totten / Bun Carley
2003	Randy Rein / Jim Larson
2004	Gert Wilcziek / Ron Wilcziek
2005	Randy Rein / Jim Larson

Scorekeeper of the Year

1997	Jane Smith
1998	Elly McCarn
1999	Edie McKinney
2000	Ralph Maylahn
2001	Gloria Smith
2002	Steve Stevens
2003	Kevin Brekke
2004	Jim Haupt

Most Improved

2000	Tom Costa / Everett Stewart
2001	Kirby King
2002	Steve Kulow
2003	Dan Meindel
2004	Jane Smith

WI Men's State Champions

1923	Forrest Mitchell	Wausaukee	1973	Harold Scheets	Milwaukee
1924	Seymour Johnson	Madison	1974	Bill Glass	Vesper
1925	Floyd Billings	Waukesha	1975	Harold Scheets	Milwaukee
1926	Harvey Elmeron	Milwaukee	1976	Harold Scheets	Milwaukee
1927	Harvey Elmeron	Milwaukee	1977	Rick Pritzlaff	Germantown
1928	Harvey Elmeron	Milwaukee	1978	Bill Glass	Vesper
1929	Harvey Elmeron	Milwaukee	1979	Bill Glass	Vesper
1930	Harvey Elmeron	Milwaukee	1980	Bill Glass	Vesper
1931	Harvey Elmeron	Milwaukee	1981	Curt Bestul	Eau Claire
1932	Harold Scheets	Waukesha	1982	John Udelhofen	Platteville
1933	Harold Scheets	Waukesha	1983	Harold Bestul	Rosholt
1934	Harvey Elmeron	Milwaukee	1984	John Udelhofen	Platteville
1935	Casey Jones	Waukesha	1985	Carl Joppe	Green Bay
1936	Casey Jones	Waukesha	1986	Mark Stevens	Marengo
1937	Casey Jones	Waukesha	1987	Mark Stevens	Marengo
1938	Casey Jones	Waukesha	1988	Mark Stevens	Marengo
1939	Casey Jones	Waukesha	1989	Don Kangas	West Allis
1940	Casey Jones	Waukesha	1990	Randy Rein	Mosinee
1941	Harvey Elmeron	Milwaukee	1991	John Udelhofen	Barneveld
1942	Casey Jones	Waukesha	1992	Don Kangas	West Allis
1943	Harvey Elmeron	Milwaukee	1993	Randy Rein	Mosinee
1944	Casey Jones	Waukesha	1994	Randy Rein	Mosinee
1945	Casey Jones	Waukesha	1995	Randy Rein	Mosinee
1946	Casey Jones	Waukesha	1996	Randy Rein	Mosinee
1947	Mike Barschy	Milwaukee	1997	Don Kangas	West Allis
1948	Casey Jones	Waukesha	1998	Randy Rein	Mosinee
1949	Tommy Bartlen	West Allis	1999	Mark Mauthe	Platteville
1950	Casey Jones	Waukesha	2000	Randy Rein	Mosinee
1951	Casey Jones	Waukesha	2001	Mark Mauthe	Platteville
1952	Casey Jones	Waukesha	2002	Randy Rein	Mosinee
1953	Tommy Bartlen	West Allis	2003	Randy Rein	Mosinee
1954	Casey Jones	Waukesha	2004	Randy Rein	Mosinee
1955	Earl Ramquist	Beloit	2005	Mark Mauthe	Platteville
1956	Carl Pfeffer	Milwaukee			
1957	Tommy Bartlen	West Allis			
1958	Carl Pfeffer	Milwaukee			
1959	Tommy Bartlen	West Allis			
1960	Ed Schimek	Milwaukee			
1961	Casey Jones	Waukesha			
1962	Ed Schimek	Milwaukee			
1963	Ed Schimek	Milwaukee			
1964	Wally Saeger	Ixonia			
1965	Tommy Bartlen	West Allis			
1966	Carl Joppe	Green Bay			
1967	Tommy Bartlen	West Allis			
1968	Bill Glass	Vesper			
1969	Bill Glass	Vesper			
1970	Bill Glass	Vesper			
1971	Bill Glass	Vesper			
1972	Ralph Maylahn	Genesee Depot			

WI Women's State Champions

1969	Sella Dollevoet	Little Chute
1970	Marion Ristau	Combined Locks
1971	Marion Ristau	Combined Locks
1972	Darlene Ebert	Fredonia
1973	Darlene Ebert	Fredonia
1974	Darlene Ebert	Fredonia
1975	Darlene Ebert	Fredonia
1976	Pat Eaton	Eau Claire
1977	Pat Eaton	Eau Claire
1978	Pat Eaton	Eau Claire
1979	Pat Eaton	Eau Claire
1980	Pat Eaton	Eau Claire
1981	Jane Smith	Balsam Lake
1982	Shary Klopp	Eau Claire
1983	Shary Klopp	Eau Claire
1984	Pat Eaton	Eau Claire
1985	Pat Eaton	Eau Claire
1986	Pat Eaton	Eau Claire
1987	Jane Smith	Balsam Lake
1988	Jane Smith	Balsam Lake
1989	Jane Smith	Balsam Lake
1990	Jane Smith	Balsam Lake
1991	Edie McKinney	Luck
1992	Lorraine Sternberg	Richfield
1993	Lorraine Sternberg	Richfield
1994	Lorraine Sternberg	Richfield
1995	Lorraine Sternberg	Richfield
1996	Jane Smith	Balsam Lake
1997	Lorraine Sternberg	Richfield
1998	Gert Wilcziek	Whitehall
1999	Lorraine Sternberg	Richfield
2000	Gert Wilcziek	Whitehall
2001	Gert Wilcziek	Whitehall
2002	Lorraine Sternberg	Richfield
2003	Gert Wilcziek	Whitehall
2004	Gert Wilcziek	Whitehall
2005	Gert Wilcziek	Whitehall

WI Elder Men's State Champions

1987	Sid Anderson	Janesville
1988	Royce Wruckle	Horicon
1989	Sid Anderson	Janesville
1990	Sid Anderson	Janesville
1991	C.L. Ollerman	Fond du Lac
1992	Ralph Maylahn	Genesee Depot
1993	Ralph Maylahn	Genesee Depot
1994	Ralph Maylahn	Genesee Depot
1995	Clayton Gage	Milltown
1996	Clayton Gage	Milltown
1997	Clayton Gage	Milltown
1998	Clayton Gage	Milltown
1999	Clayton Gage	Milltown
2000	Clayton Gage	Milltown
2001	Clayton Gage	Milltown
2002	Clayton Gage	Milltown
2003	Clayton Gage	Milltown
2004	Clayton Gage	Milltown
2005	Clayton Gage	Milltown

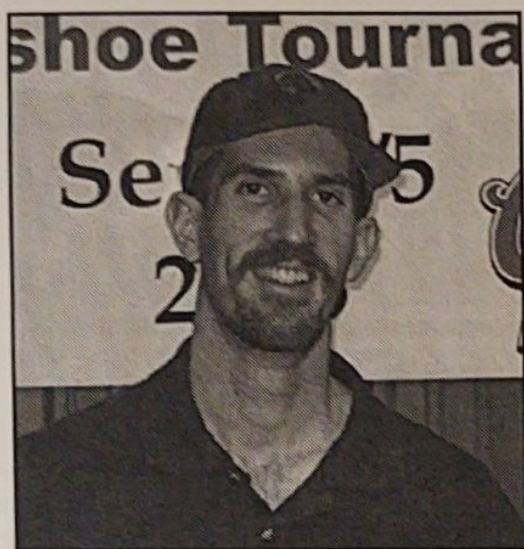
WI Jr. Girl's State Champions

1976	Nancy Mulry	Combined Lo
1977	Linda VanDeurzen	Combined Lo
1978	Nancy Mulry	Combined Lo
1979	Nancy Mulry	Combined Lo
1980	Nancy Mulry	Combined Lo
1981	Tammie Mattson	Menomonee
1982	Debby Bestul	Eau Claire
1983	Debbie Bestul	Eau Claire
1984	Debbie Bestul	Eau Claire
1985	Debbie Bestul	Eau Claire
1986	Debbie Bestul	Eau Claire
1987	Debbie Bestul	Eau Claire
1988	Debbie Bestul	Eau Claire
1989	Renee Sternberg	Richfield
1990	Pam Steinke	Waukesha
1991	Heidi Sternberg	Richfield
1992	Heidi Sternberg	Richfield
1993	Heidi Sternberg	Richfield
1994	Penny Steinke	Waukesha
1995	Penny Steinke	Waukesha
1996	Penny Steinke	Waukesha
1997	Nicole Riehle	Auburndale
1998	Nicole Riehle	Auburndale
1999	Nicole Riehle	Auburndale
2000	Tava Cook	Stratford
2001	Tava Cook	Stratford
2002	Tina Riehle	Auburndale
2003	Tina Riehle	Auburndale
2004	Tava Cook	Stratford
2005	Aleena Cook	Stratford

WI Jr. Boy's State Champions

1973	Randy Pritzlaff	Germantown
1974	Tim Semingson	Elk Mound
1975	Tim Schommer	Combined Locks
1976	Bret Pritzlaff	Germantown
1977	Bret Pritzlaff	Germantown
1978	Bret Pritzlaff	Germantown
1979	Bret Pritzlaff	Germantown
1980	Kirk Bartnik	Mountain
1981	Bret Pritzlaff	Germantown
1982	Bret Pritzlaff	Germantown
1983	Hank Schwartz	Sheboygan
1984	Hank Schwartz	Sheboygan
1985	Hank Schwartz	Sheboygan
1986	Rich Weishoff	Portage
1987	Ken Jaeger	New London
1988	Ken Jaeger	New London
1989	Ken Jaeger	New London
1990	Mark Mauthe	Platteville
1991	Mark Mauthe	Platteville
1992	Mark Mauthe	Platteville
1993	Jason Goldsmith	Janesville
1994	Shannon Rein	Mosinee
1995	Jason Goldsmith	Janesville
1996	Wesley Rein	Mosinee
1997	Dustin "Pudge" Dahl	Trempealeau
1998	Barrent Dahl	Trempealeau
1999	Barrent Dahl	Trempealeau
2000	Dustin "Pudge" Dahl	Trempealeau
2001	Wesley Rein	Mosinee
2002	Kirby King	Stevens Point
2003	Nathan Heinritz	Pewaukee
2004	Ryan Hyatt	Racine
2005	Nathan Heinritz	Pewaukee

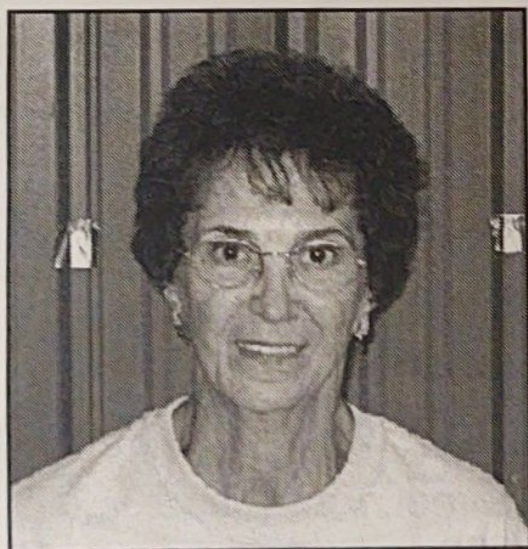
2005 State Champions



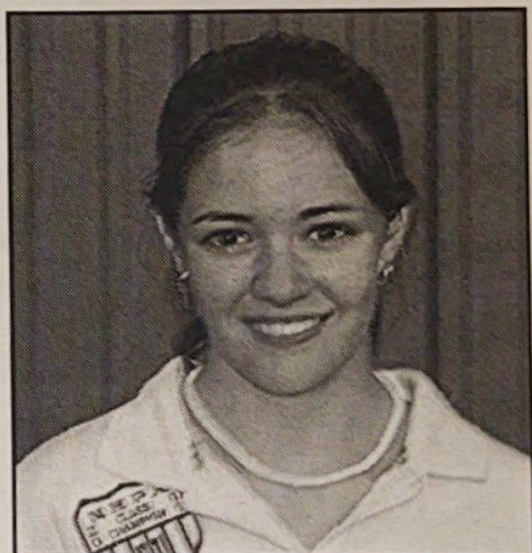
Mens 2005 State Champion
Mark Mauthe



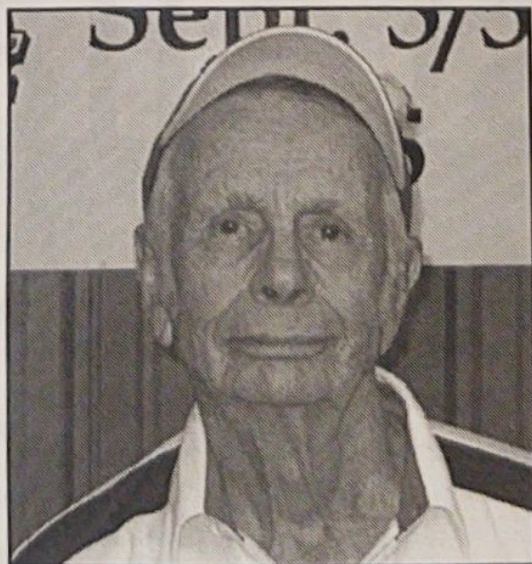
Jr. Boys 2005 State Champion
Nathan Heinritz



Ladies 2005 State Champion
Gert Wilcziek



Jr. Girls 2005 State Champion
Aleena Cook



Elder 2005 State Champion
Clayton Gage

Mogie's PUB

Serving lunch, dinner and late night
436 Water Street, Eau Claire
715.836.9666



Contemporary Italian cuisine. Seating begins
at 4:00 pm. 428 Water Street, Eau Claire
715.839.8969

stella blues

Eau Claire's only Cajun, served in a casual
atmosphere. 306 East Madison Street,
715.855.7777

LIND

Tom

715-878-4896

Construction

Building & Remodeling

S-7725 Homestead Rd.
Eau Claire, WI 54701

Ray's Place

838 Water Street

Homemade Soups & Sandwiches

Served Open to Close

and don't forget the mustard!



609 North Conway St.
Thorp, WI 54771



2620 E. CLAIREMONT
EAU CLAIRE, WI
715-834-6503



We Feature:

- Free Continental Breakfast
- Free Wi-Fi Internet Access
- Free Local Phone Calls
- Deluxe Whirlpool & King Rooms
- Non-Smoking Rooms
- Remote Control Cable TV

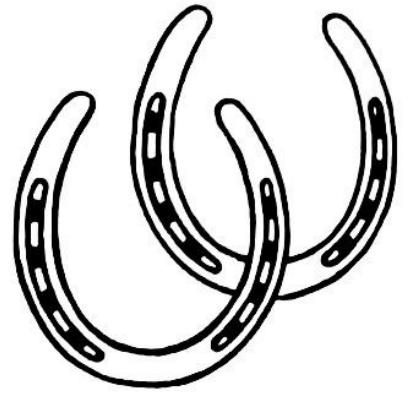
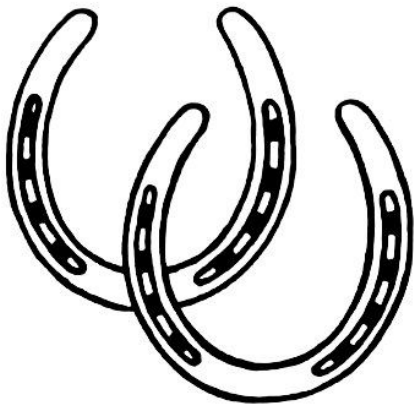
Exel Inn of Eau Claire
2305 Craig Road
(715) 834-3193

Call Toll-Free

1-800-FOR-EXEL

(800) 367-3935





*Have Fun in the
Tournament!*

AREA 

Financial Services, Inc.

211 Harvest Lane Suite 2

Altoona, WI 54720





Good Luck State Horseshoe Pitchers!

American Legion Post 53
634 Water Street
Eau Claire, WI 54703

Good For One
Frosty Mug of
BEER or Root Beer

Altoona Family Restaurant



2000 N. Hilcrest Parkway, Altoona WI
(Hwy. 12 East)

715-830-5000

Open 6 a.m. - 9 p.m.

We serve breakfast any time.

We serve homemade food.

All Items available for carry-out with
no extra charge.

Not responsible for lost or stolen items.

We also have a location in Chippewa Falls!
1701 Kennedy Road, Chippewa Falls.

2006 Wisconsin State Championships

ELDERS CHAMPIONSHIP

Sunday, Sept. 3, 2:00 PM

D.C.	CLAYTON	GAGE	MILLTOWN
58.26	PAUL	WILSON	JANESVILLE
58.10	VINCE	JAKEL	SPENCER
52.61	RON	WILCZIEK	WHITEHALL
51.66	JOHN	DOLEZEL	EAU CLAIRE
51.31	GENE	MASON	APPLETON

WINNER CLASS A

HIGH % OF CLASS A

ELDERS CLASS A

Saturday, September 2, 12:00 PM

49.10	NORB	FUHRMAN	COMBINED LOCKS
48.73	BILL	MATEY	APPLETON
48.08	NORM	GAGE	MILLTOWN
47.25	IVAN	RUZIC	STRATFORD
40.99	NELSON	RICHASON	GALESVILLE
40.38	CLIFF	TROULLIER	WHITELAW
39.26	MILT	LARSEN	WEST ALLIS

ELDERS CLASS B

Sunday, September 3 9:30 AM

38.10	EARL	PAULSON	BELOIT
36.76	ROGER	HEINRITZ	BROOKFIELD
36.38	MERRILL	SEMINGSON	ELEVA
35.85	WILLIS	DAVID	MARSHFIELD
34.92	HARRY	ZDROIK	EAGLE RIVER
34.11	DAN	DAVID	AUBURNDALE
31.72	DAVE	MILLER	WAUNAKEE

ELDERS CLASS C

Saturday, September 2 12:30 PM

29.80	ROB	REHM	CHIPPEWA FALLS
29.48	JOHN	BRUGGER	PLATTEVILLE
28.19	BABE	RIEBER	LA CROSSE
26.15	WES	PODVIN	BUTLER
25.62	DAVE	NINNEMAN	ST CROIX FALLS
22.46	RUSS	BURNS	JANESVILLE

JUNIOR BOYS & GIRLS CHAMPIONSHIP

Saturday, Sept. 2 4:00 PM

D.C.	NATHAN	HEINRITZ	PEWAUKEE
56.02	RYAN	HYATT	RACINE
D.C.	ALEENA	COOK	STRATFORD
44.19	BEN	HEINRITZ	PEWAUKEE
37.11	KIRI	COOK	STRATFORD
20.55	COLA	HICKETHIER	CENTURIA

MIXED JUNIORS

Saturday, Sept 2, 4:00 PM

14.40	MALACHI	DAVID	MARSHFIELD
11.00	RUSH	HICKETHIER	CENTURIA
7.50	GUNNAR	DAVID	MARSHFIELD
7.50	BEAU	DAVISON	CENTURIA
5.45	CASH	HICKETHIER	CENTURIA
4.03	NICOLE	FEAVEL	VAN DYNE
3.00	ALEX	SECORD	FOND DU LAC
2.00	HEATHER	FEAVEL	VAN DYNE

LADIES CHAMPIONSHIP

Sunday, Sept. 3 2:00 PM

D.C.	GERT	WILCZIEK	WHITEHALL
71.75	PENNY	STEINKE	WAUKESHA
62.85	LORRAINE	STERNBERG	RICHFIELD
50.40	PAM	AIKEN	OAK CREEK
49.89	SHARI	DAVISON	CENTURIA
49.88	EDIE	McKINNEY	LUCK

WINNER OF CLASS A

HIGH % OF CLASS A

LADIES CLASS A

Saturday, Sept. 2 12:30 PM

49.27	TAVA	COOK	STRATFORD
46.20	GLORIA	SMITH	MILLTOWN
45.14	ELAINE	TROULLIER	WHELLOW
40.69	SONIA	COOK	STRATFORD
33.62	ELLY	MCCARN	EAU CLAIRE
32.22	ANN	MURRAY	BELOIT

LADIES CLASS B

Saturday, Sept. 2 4:00 PM

31.89	SHIRLEY	BRUMBAUGH	HUDSON
30.45	KAREN	HENKEL	MUSKEGO
21.91	CECELIA	TROSSEN	MOUNTAIN
21.85	SYLVIA	DAVID	AUBURNDALE
19.37	B.J.	JOHNSON	BALDWIN

MENS CHAMPIONSHIP Sunday, Sept. 3 2:00 PM

D.C.	MARK	MAUTHE	PLATTEVILLE
64.70	RANDY	REIN	MOSINEE
60.22	ROGER	COMERO	COCHRANE
59.39	KEN	HEINRITZ	MENOMONEE FALLS
52.20	JIM	LARSON	SUN PRAIRE
49.89	TOM	ENDLER	TWIN LAKES

WINNER OF CLASS A and HIGH % OF CLASS A

CLASS A Saturday, Sept. 2, 4:00 PM

49.77	KEN	JAEGER SR	NEW LONDON
49.70	PUDGE	DAHL	TREMPEALEAU
47.69	JEFF	MAUTHE	PLATTEVILLE
47.11	JOHN	KOEPP	PEWAUKEE
46.97	GLENN	BOGENSCHNEIDER	WEST BEND
46.91	KEN	FRAME	MAZOMANIE
46.62	AL	HUIZENGA	STOUGHTON
46.41	KERRY	MORRIS	MARSHALL

CLASS B Saturday, Sept 2, 12:30 PM

45.96	BERNARD	CARLEY	RICHLAND CENTER
44.94	BRUCE	McLINN	CLINTON
44.17	JERRY	NIEMUTH	RHINELANDER
43.81	BOB	GREGORICH	MARSHFIELD
43.64	BRIAN	CONNELL	JANESVILLE
43.57	MARK	STEVENS	MARENGO
42.38	RAY	GROSKINSKY	FRIENDSHIP
41.96	TERRY	STERNBERG	RICHFIELD

CLASS C Sunday, Sept 3, 9:30 AM

40.46	JOE	DOHERTY	ATHENS
40.27	HARVEY	BILZ	PHILLIPS
40.19	VAUGHN	WATZKE	WAUNAKEE
40.14	JIM	HEIM	HOLMEN
39.76	KEN	SCHUMANN	RHINELANDER
39.06	NORM	BECKIUS	BELOIT
38.50	STEVE	MIELKE	GREEN BAY
38.45	DAVE	KLIPSTEIN	HILLSBORO

CLASS D Sunday, Sept 3 9:30 AM

38.31	DAVID	HANSEN	FRANKSVILLE
38.05	CLIFF	ERICKSON	EAGLE RIVER
37.79	RALPH	MARTHALER	MEDFORD
37.28	BOB	KALLSTROM	ARKANSAW
35.97	DICK	HANSEN	FRANKSVILLE
35.56	AL	RUDE	RHINELANDER
35.14	JASON	GOLDSMITH	JANESVILLE

34.66	DAVID	PAUL	BALDWIN
CLASS E Sunday, Sept. 3 9:30			
34.28	RAY	ALLMAN	MEDFORD
34.14	DENNIS	AMBUEHL	OCONOMOWOC
33.97	GALEN	KOZEL	MUKWONAGO
33.92	RUSS	HEINRITZ	WAUKESHA
33.25	PETE	KUMLIEN	MUKWANAGO
33.10	PAUL	WIESE	EAU CLAIRE
32.66	DAVE	VOLZ	LAVALLE
32.53	JOHN	SECORD	FOND DU LAC
CLASS F Saturday, Sept 2, 9:00 AM			
32.45	EDWARD	HACK	WAUSAU
32.26	JOHN	BROPHY	GALESVILLE
31.62	JIM	GANTHER JR	EAU CLAIRE
30.95	JIM	HAUPT	MILWAUKEE
30.95	DEAN	HOVE	HOLMEN
30.90	RAY	MALLO	GILMAN
29.74	DEAN	CHAFFEE	FREDERIC
CLASS G Saturday, Sept 2, 9:00 AM			
28.63	GARY	VOLZ	MARSHALL
28.64	ART	COLLIEN	EAGLE RIVER
28.08	JIM	EMERY	EDGERTON
25.85	RANDY	HEINRITZ	WILD ROSE
25.83	MEL	COOK	STRATFORD
25.70	ROGER	OLSON	WESTBY
25.19	KEVIN	BREKKE	EDGERTON
25.00	KEN	DAVISON	WILD ROSE
CLASS H Saturday, Sept. 2, 9:00 AM			
24.95	GEORGE	ECKSTROM	GILMAN
24.75	JAYME	FEHR	MERRILL
24.37	TOM	BIRD	BELOIT
22.89	MARK	ANDERSON	PRESCOTT
22.68	JOHN	BRANDT	LA CROSSE
22.36	LARRY	DANIELSON	RIVER FALLS
22.34	MIKE	ZAHN	LOMIRA
22.23	ED	BONEBRIGHT	CLINTON
CLASS I Saturday, Sept. 2, 9:00 AM			
21.91	TOM	DUDENHOEFER	OXFORD
21.79	TOM	STEINKE	EAGLE
20.12	GENE	SATTERSTROM	MADISON
18.00	PAUL	VALENTINE	OXFORD
16.88	BRYAN	HOVE	HOLMEN
15.80	WAYNE	FRANZEN	FRANKLIN
13.10	CURT	NOVINSKI	PLATTEVILLE
CLASS J Saturday, Sept. 2, 4:00			
12.95	DAVE	SEMINGSON	ELEVA
11.44	JERRY	KOCHMAN	KENOSHA
10.72	JAY	GANTHER	EAU CLAIRE
9.42	MICHAEL	FRANZEN	EAST TROY
8.05	TOM	LIND	EAU CLAIRE
7.38	DAN	CRAFT	MARSHFIELD

ALL I WANT IS... A HOT BREAKFAST
AND HIGH-SPEED INTERNET ACCESS.



Thousands of Things to Do!
ask.hamptoninn.com



Milk back to our
rednecks pool



Complimentary
On the House® Hot Breakfast

And that is just for starters. We've made a host of exciting new changes at Hampton to make your stay unforgettable. We promise you'll be 100% satisfied. Guaranteed.

Eau Claire (University Area) • 2622 Craig Road • Eau Claire, WI
1-800-HAMPTON • www.hampton-inn.com/hil/eauclaire



WELCOME HAVING YOU HERE.™

The Hilton Family

36USC220506 Proud sponsor of the U.S. Olympic
Team. © 2005 Hilton Hospitality, Inc.

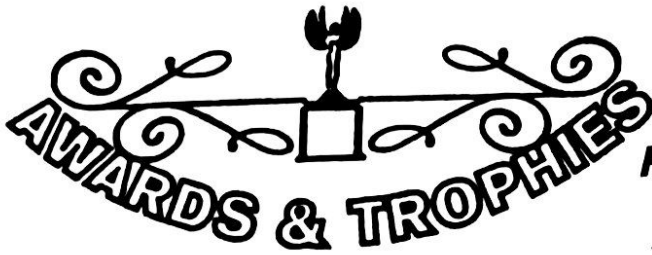


Americinn Motel & Suites
6200 Texaco Drive
Eau Claire, WI 54703
715-874-4900

Welcome Horseshoe Pitchers!
The only choice for
participants of the
Wisconsin State Horseshoe
Tournament!

- ✓ Enhanced Continental Breakfast
- ✓ Pool and Whirlpool
- ✓ Elegant and Warm Two Story Lobby
- ✓ Free Local Calls
- ✓ Free High Speed Wireless Internet
- ✓ Conveniently Located for Easy Access to and From Carson Park

CLASSIC



Hwy 40 ELM MOUND, WI

Manufacturers of trophies,
plaques and specialty items
custom designed to
your needs.

Providers of the 2006 Plaques!

715-879-5838



William Hutchinson, DDS
Tom Breneman, DDS
Lonnelle Breneman, DDS
Christopher Johnson, DDS

507 Main Street
Eau Claire, WI 54701

715-834-6603
FAX 715-834-6652

mail@hillsidedental.com
www.hillsidedental.com



A Country-Victorian
Bed and Breakfast Inn
*Whirlpools - Breakfast in Bed
Fireplaces - Antiques - Cable TV*

2536 Highway 12
Eau Claire, WI 54702
715-832-2945

*One of Eau Claire's
Finest Motels!*

2245 S. Hastings Way
Jct. U.S. Highway 12 & 53
Eau Claire, Wisconsin 54701

ANTLERS

MOTEL

715-834-5313

**For Reservations:
1-800-423-4526**

Guests Enjoy Our Super Clean Rooms
Cable Television • HBO 1,2,3 • Air Conditioned
Touchtone Phones • Data Port Phones • Non-Smoking Rooms
Complimentary Coffee • Continental Breakfast • Winter Plug-ins



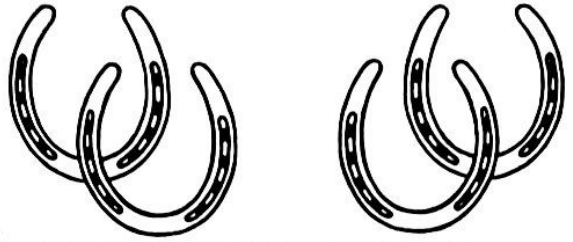
www.heartlandinns.com

18 Locations in IA • 1 Location in WI

- Indoor Pool, Sauna, & Game Room
- FREE Hearty Breakfast & Evening Snacks
- FREE Internet Station in Lobby & Wireless Access in Every Room

RESERVATIONS: 800-334-3277
 3075 Commonwealth Ave • 715-839-7100

Welcome Pitchers!



- Lounge: 715-552-1998
- Fax: 715-834-1148
- maplman@aol.com
- Motel: 715-834-2618
- Watts: 800-624-3763
- www.themaplemanor.com



2507 South Hastings Way, Eau Claire, WI 54701-4556

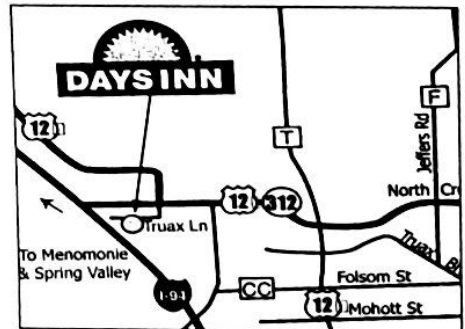


Days Inn West 6319 Truax Ln. Eau Claire, WI 54703

Exit 59 off of I-94 at Hwy 312

Call for Reservations: 1-800-950-4850

- ✓ Complimentary Continental Breakfast
- ✓ Indoor Pool & Jacuzzi
- ✓ Free high-Speed Wireless Internet
- ✓ Guest Laundry Facilities
- ✓ Pub On-Site



Econo Lodge

Inn & Suites

BY CHOICE HOTELS

I-94 Exit 68
 Eau Claire, WI
 715-833-8818

Good Luck!

Randy's

**FAMILY
RESTAURANT**

Smoke Free

**DINE IN OR
CARRY OUT**

**Delicious
Sandwiches
Homemade
Soups
Steaks &
Seafood**



**NOON SPECIALS • EVENING SPECIALS
FRIDAY FISH FRY • CHILI & PIES**

Complete Menu • Breakfast • Noon • Dinner • Breakfast Always Served

OPEN 6 AM - 10PM • Closed Sunday

Fridays 6 AM - 11PM

839-8449

1132 W MAC ARTHUR AVE

NEXT TO MIDWAY MOTOR LODGE JUST OFF HWY 37

HIGHLANDER INN

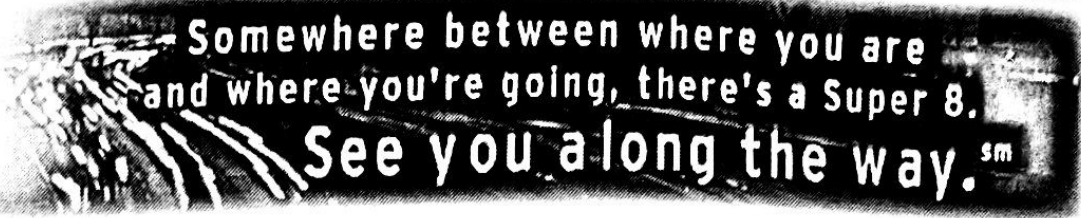
Eau Claire's Finest Budget Motel

Located at the junction of Hwy I-94 & 37
(Exit #65)

- 40 units
- Air Conditioned
- Kids 12 & Under
Stay Free
- Queen Size Beds
- Direct Dial Phones
- 24 Hour Desk Service
 - Senior Citizen
Discounts
 - Group Discounts

835-2261

1135 W. MacArthur Ave.
All major credit cards accepted



Super 8 Campus Welcomes: Horseshoe Pitchers and Families

- Smoking and Non Smoking Available
- Refrigerators and Microwaves (Limited)
- Complimentary Continental Breakfast
- Highspeed Wireless Internet
- 78 Cable Channels (HBO Included)
- Game Room with Pool Table
- Mention You're in the Tourney and
Receive Additional 10% off Room Rate!

**Good Luck to
all pitchers!**

115 MacArthur Avenue
Eau Claire, WI 54703

715-832-9731





RESTAURANT & SPORTS BAR

Gourmet Pizza, Pastas, Ribs,
Sandwiches & Salads.

Open Late!

Featuring the Area's Premier Sports Bar.

Fun Place, Serious Food!

**1920 S. Hastings Way
Eau Claire, 832-5100**

Cornell Area Care Center Rehabilitation Services

Providing a bridge
between
hospital and home



Cornell Area Care Center offers complete Skilled Nursing Care and Rehabilitation services in a warm, inviting atmosphere.

Our rehab team is here to serve your needs on an inpatient or outpatient basis



- Our comprehensive rehabilitation team consists of physical, occupational and speech therapy, nursing, nutritional services, activities and social services
- Goal setting upon admission
- Individualized rehab programming to meet patient needs
- Attention given to maximize patient's potential
- Focus on providing patients with independence
- Qualified professionals that are compassionate and caring
- Home evaluations to assess patient's safety and mobility within their own home
- Discharge planning with team of professionals to ensure a safe transition to home

Front row left to right: Jackie Ross, Physical Therapist, Jo Larson, Occupational Therapist, Karen Geraghty, Occupational Therapist/Facility Rehab Coordinator. Back row left to right: Cathy Cohoon, Rehab tech, Kerry Kowalski, Physical Therapy Assistant, Dawn Savolainen, Speech Language Pathologist

Call today to schedule a tour or for more information
Cornell Area Care Center

320 N. 7th Street
Cornell, WI 54732
(715) 239-6288

C12-1WOM

Medicare/Medicaid/Veteran's Administration/Private Insurance Accepted

Freshest Seafood in Eau Claire - Sushi Bar

Neo Asian - Full Service Bar

Live Jazz Band Every Friday & Saturday

Eau Claire's Only Fine
Dining Asian Restaurant!

Shanghai
BISTRO



2930 Craig Rd. • Eau Claire • 835-3348

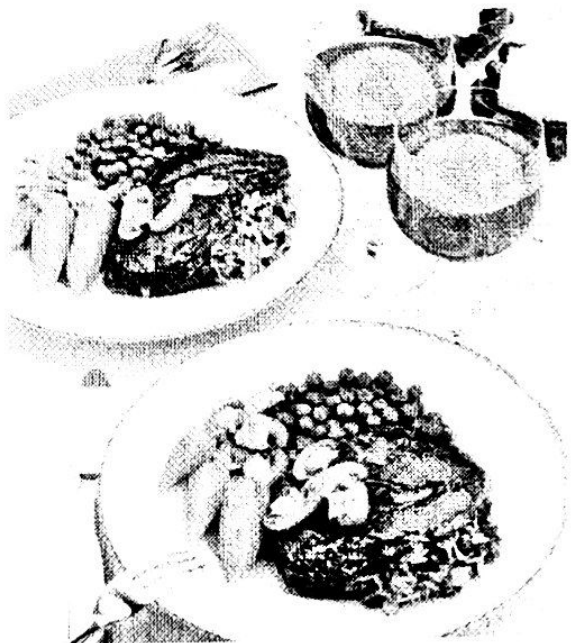
www.shanghaibistro.com

Sweetwaters Restaurant & Bar
A Sure "Ringer" for over 20 years!

- Lunch and Dinner Menu
- Chef Inspired Entrees
- Flame-broiled steaks
- Fresh Seafood
- Fantastic Salads
- Great Sandwiches
- Full Service Bar
- Patio Seating Available
- Located only 2 miles from the pits



1104 W. Clairemont Ave. • 715-834-5777



The Plaza Hotel & Suites

1202 W Clairmont Ave
Eau Claire, WI 54701

All 233 Rooms have:

Refrigerators

Microwaves

Coffee, Hairdryers

Irons, Boards



Good Luck W State Horseshoe



Burgundy's

Deluxe Continental

Two Pools

Water Snakes

Whirlpool

Arcade

Fitness Center

Burgundys Restaurant

Brewski's Pub & Grill

Brewski's
**PUB
&
GRILL**

Great Value - Great Rates

715-834-3181

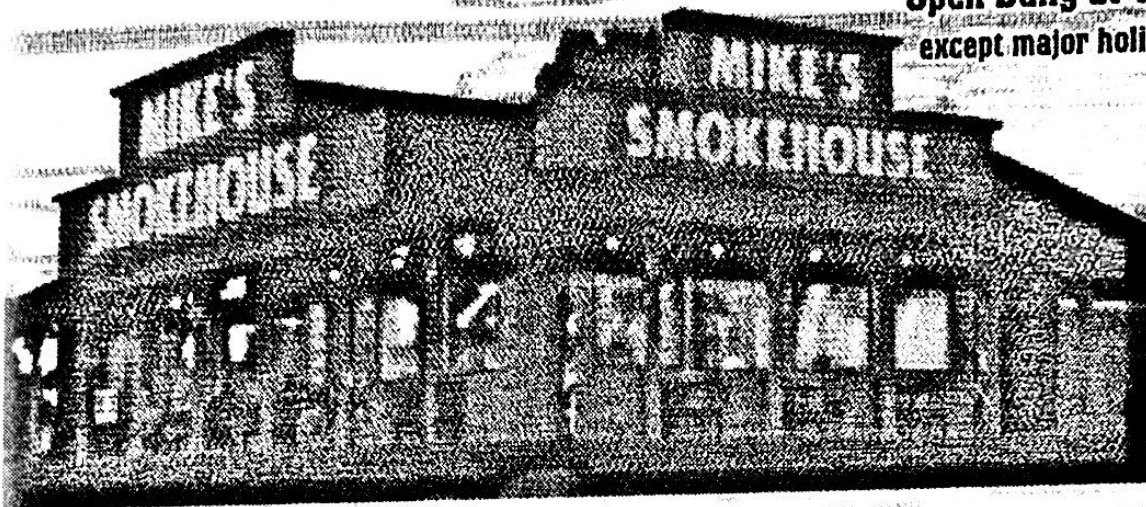
MIKE'S



SMOKEHOUSE

Hickory Wood
Makes Us
Good!

Open Daily at 11 am
except major holidays



BBQ Beef • Ham • Pork • Ribs • Chicken • Fish

Served in dinner plates & baskets. Eat In or Carry Out.

2235 N. Clairemont Ave. • 715-834-8153

Fax orders to 834-9176 • Call in orders to 834-8153

\$2 OFF

Purchase of
\$10 or more

Limit 1 coupon per guest check.
Not valid with any other offer. Dine In Only.

\$5 OFF

Purchase of
\$25 or more

Limit 1 coupon per guest check.
Not valid with any other offer. Dine In Only.

Everything You Need Under One Roof!



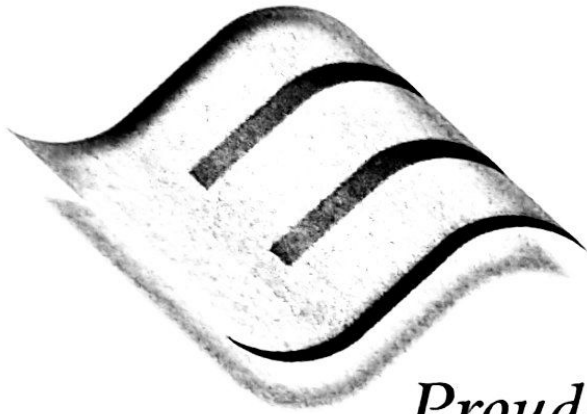
BY CHOICE HOTELS

- *120 Sleeping Rooms*
- *Indoor/Outdoor Pool*
- *Full Service Bar with Nightly Entertainment (O'Leary's Pub)*
- *On-Site Family Restaurant (Mancino's)*
- *Meeting and Banquet Rooms Available*

**809 W. Clairemont Avenue
Eau Claire**

www.qualityinneauclaire.com

(715) 834-6611



Eau Claire
PRINTING COMPANY

*Proudly celebrating our 50th
Anniversary!*

1956 - 2006

*Full Service Offset and
Digital Commercial Printing.*

Newsletters

Letterheads

Business Cards

Books

Brochures . . .

Call today for an estimate!

415 Galloway Street • 715-832-1135

Welcome to Eau Claire!



Restaurants

1. Altoona Family Restaurant
2. American Legion Post 53
7. Boston's
15. Grizzly's Grill & Saloon
22. Mike's Smokehouse
23. Mogie's Pub
27. Randy's Family Restaurant
28. Ray's Place
29. Shanghai Bistro
32. Sweetwaters Restaurant
33. Mona Lisa's Restaurant
34. Stella Blues

Lodging

3. Americinn
5. Antlers Motel
9. Day's Inn West
11. Econo Lodge
12. Excel Inn
16. Hampton Inn
17. Heartland Inn
18. Highlander Inn
21. Maple Manor
24. Otter Creek Inn
25. The Plaza
26. Quality Inn
30. Super 8 Motel
31. Super 8 Motel, Summit

Corrections and Additions for 2006 State Tournament Booklet

Club Team Champion: 2005 Eau Claire Horseshoe Club, 2006 Beloit Horseshoe Club

Pitcher of the Year 2005: Randy Rein, Norm Beckius, Jim Haupt

State Tournament Team: Heinritz Team

President's Award 2005: Beloit Horseshoe Club

State Doubles Champions 2005: Penny Steinke and Dan Bloom

Scorekeeper of the Year 2005: Carol Crook and Sonny Cockcroft

Most Improved 2005: Nathan Heinritz