

CONE & SNYDER

Men's and women's titles go to new champions.
 Kevin Cone wins all but two games pitching 82.9%
 Sue Snyder pitches 84.61% losing only one game.

Thirty year old farmer/auctioneer, Kevin Cone of Iowa won 29 of 31 games in the final week of the 1992 World Tournament at Columbus, Ohio. He and Allan Francis, (4th) Missouri were the only pitchers in the 80 percentile range. Jim Knisley (79.05%) of Ohio was second, and down two games. Following was the defending champ Walter Ray Williams with 25 wins at 79.4%.

These four men are the past and present World Champions of the past four years. The Championship class as a whole was considered by some to have a high mean average. All but four pitched averages over 70%. New York state had four in the top 13 led by John Bogardus, 5th. Canadian champion, Andre LeClerc, 6th, was a consistent top rank challenger. It was pleasant to see Charlie Meredith of Kentucky take the #7 spot. Steve Wyrill, California, came from the 32nd seed up to finish in the middle of the pack. Larry Knop of Illinois on his first tour with the champions won 13 games. And Charlie Webb lost a lot of games the hard way. He pitched the most shoes of the tournament, finished in the depths of the class but pitched 72.64%.

Sue Snyder of Indiana was #2 last year. She said at Team World it was her proudest achievement at that time. It should be an indication of how meaningful it must be to see her name now followed with "World Champion"

Snyder broke the record pitching the highest percentage ever for a single game in women's World competition. Sandy McLachlin was runner-up and Snyder's only loss. Sylvianne Moisan, Canadian women's champ, finished third.

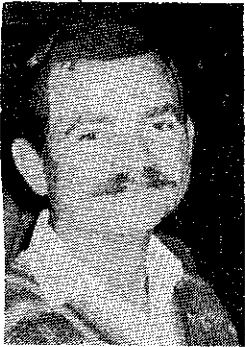
Despite the misleading last name, Moisan is the wife of Andre LeClerc. She is also the daughter of Angeline Moisan, the 15th place winner in the women's championship class. Are you ready for this? Diane Cantin (12th) is Angeline's sister. All are from Quebec.

Tari Powell, defending champion, was entered but elected to withdraw. This season her performance has been alternately stellar and uncontrollable. Powell made a brief appearance on the courts for pictures and congratulations to the new champion. She has every intention to be on the scene again next year.

Minnesota's Bev Nathe took a 4th while her sister, Phyllis Negaard missed many close games, pitched 78%, the most shoes, but slipped to 10th. Sharon Paddock and Vicki Winston also shared the mid-rankings of 8th and 9th. Both were surpassed by Cathy Carter and Lu Cave at 6th and 7th respectively

Complete World Tournament results will be published in NEWSLINE.

Ron Ramquist, Beloit; 8th, cl M-U, 28.21%
 (8th place in this class was worth \$170)
 Ken Davison, Menomonee Falls; 2nd, M-R, 37.5%
Red Ferguson, So. Beloit; 1st, M-V, 41.56%
 (1st place paid \$300)
 Jim Ganther; 2nd, M-W, 33.57%
 Jim King, Green Bay; 8th, M-X, 30.0%
 Larry Barber, Rhinelander; 3rd, M-D, 61.07%
Dan Bloom, Janesville; 1st, M-F, 57.1
 Tom Bestul, Ohio; 6th M-E, 53.20%
 Pam Steinke, Waukesha; 2nd, W-D, 45.50%
 Sue Helene, Webster; 4th, W-D 51.50%
Heather Sternberg, Richfield; 1st, G-B 43.10
 Heather Sternberg, 4th, G-A, 45.20
 Penny Steinke, Waukesha; 2nd, G-B 41.8%
Celeste Polak, Texas; 1st, G-CHAMP, 79.08%
 Heidi Sternberg, Richfield; 4th, G-champ 56.3
 Evelyn Goshaw, Eau Claire; 2nd, SrW-B, 46.7%
 Ev Goshaw, 5th, SrW-A 45.5
 Cy Srenaski, Green Bay; 3rd, SrW-A, 53.7
 Carla McFarlane, Wind Lake; 5th, SrW-B, 35.2%
 Lee McFarlane; 5th, B-D, 12.5%
 Paul Fricano; 6th, B-D, 11.3%
 Jane Smith, Balsam Lake; 5th, W-B, 60.5
 Jane Smith, " " 6th, W-A, 60.0%
 Edie McKinney, Luck; 6th, W-B, 52.0
 Harold Bestul, Stevens Point; 3rd EC-30' 50.2
Lou Bensing, Salem; 1st, EB-40', 56.7%
 Wally Srenaski, Green Bay; 6th, SrB, 43.4%
 Curt Bestul, Eau Claire; 12th SrC, 28.1
 Bill Hildebrand; 10th, SrH, 16.8%
Karl Van Sant, Indiana; 1st, SrChamp, 67.7%
 Red Henton, Iowa; 3rd, SrChamp, 67.7%
 Ray Hill, Wakefield, MI, 10th, SrChamp, 59.0%
 Ralph Maylahn, Genesee; 4th, E-30' Champ 65.5%
 (High single game, 35 of 40 for 87.5%)
 Bill Matey, Appelton; 4th, Int-MF, 27.0%
 Bill Spahn, 5th, Int-ME, 35.9%
Jim Walters, Ohio; 1st, B-CHAMP. 89.3%
 Mark Mauthe, Platteville; 5th, B-CHAMP 76.8%
 Jason Goldsmith, Janesville; 9th, B-CH, 64.0
 Len Lipovsky, MN; 2nd, Int-Champ, 89.06%



DICK HANSEN WHPA PRESIDENT

It's about time, way over due, should have been done yesterday, that's just a few of the statements made after the 1992 NHPA Convention. Ten hours of debate to totally rewrite the bylaws of the NHPA. The changes made to the bylaws, as written in the Newsline, are too numerous to detail here. Hi-lights can be found elsewhere in this newsletter. The main point for myself and many others is that it is done. It will make the NHPA bylaws much easier to understand and interpret. To accomplish this major rewrite, it took many hours of planning and forethought by NHPA President, Dave Loucks and the rest of the Executive Board. My hats off to Dave for getting this done in only 10 hours. Some said it would take two days. It was one of the most well run meeting I have ever attended. A meeting that could have gotten out of hand over petty bickering, did not. We will all be back next year to rewrite the pitching rules at the '93 W.T. sounds like fun, want to be a delegate? See me at the state tournament, I'll put your name down.

The new bylaws take effect 1-1-93, any questions can be gone over at our state meeting, Oct 24th, 1:00 PM, at Royal Wood. Hopefully, I will be able to answer them for you at that time. I know it will affect us all as NHPA members.

On the lighter side; I did not know that our own Mr. Jim Haupt is a well known star

on the National horseshoe level. When one is hounded by autograph seekers, there must be a reason for it. Yes, it's true, for I was standing beside Mr. Haupt when a young man asked Jim to sign his program book. "Who do you think I am", Jim said. "Why your Carl Van Sant, are you not," was the reply. Does Jim look like Carl or does Carl look like Jim. I hope Carl doesn't find out, hope the young man got his autograph.

State Tournament time again. Should have a good turn out again this year in Beloit. No rain or wind to contend with inside. Plan on being there Sunday around noon. I would like to see a large crowd for our two Hall of Fame inductees, Jane Smith and John Secord, that both are deserving. I will have the "Pitcher of the Year" award at that time, also an NHPA award to present at that time. Most already know who the "Pitcher of the Year" award will be going to but the rest of you can come on Sunday to find out. Bet you all thought I would give out the name. Not Yet! See you in Beloit. Congratulations to all W.T. Wisconsin winners, all that participate are winners.

WHPA OFFICERS

- | | |
|--|--|
| PRESIDENT
Richard Hansen
3085 S. 76th ST.
Franksville, WI 53126
414-835-1321 | SECRETARY-TREASURER
John Secord
W 6868 Brown Rd.
Fond du Lac, WI 54935
414-922-0080 |
| 1ST VICE PRESIDENT
Jane Smith
R. Rt. Box 17
Balsam Lake, WI 54810
715-485-3057 | 2ND VICE PRESIDENT
Curt Bestul
1412 Sherwin Ave.
Eau Claire, WI 54701
715-832-3603 |
| HALL OF FAME
Ann Opsteen
304 Williams St.
Combined Locks, WI 54113
414-788-1202 | SCHOLARSHIP FUND
JUNIOR PROGRAM DIRECTOR
Lorraine Sternberg
W206 N13520 Woodside Ln.
Richfield, WI 53076
414-677-3300 |

NHPA REGIONAL DIRECTORS

- | | |
|--|--|
| Jim Haupt
5075 N. Elkhart Ave.
Milwaukee, WI 53217
414-964-2735 | Jane Smith
R. Rt. Box 17
Balsam Lake, WI 54810
715-485-3057 |
| Ken Jaeger
Rt. 4 Knight Rd.
New London, WI 54961
414-982-6287 | |

WISCONSIN HORSESHOE NEWSLETTER

W204 N11912 Goldendale Rd.
Germantown, WI 53022
414-628-1484

EDITOR / PUBLISHER
Susie Pritzlaff

STAFF / WRITER
Jim Haupt

Published eight times annually @ \$7.00 / year.

One Day Service
Awards, Trophies, Plaques
Sales Incentives

RUDIG OLYMPIC AWARDS

118 S. 2nd Street
Milwaukee, WI 53204

Royce DeBow
National Sales Manager

(414) 273-2727
FAX 414-273-7039

DOWN AND BACK
WITH JIM HAUPT

DOWN AND BACK goes to The World Convention

As you may have heard the annual business meeting of the NHPA was held the day following the tournament and lasted about ten hours including breaks.

The minutes of this meeting will be published after they have been verified by a newly appointed committee of: Vicki Winston, Missouri; George Nick, Minnesota, and Dick Hansen of Wisconsin. Their work will allow publication of a new by-law book without going through acceptance of the minutes at the next convention.

Article by article and through every sub-section plodded the delegates until at last the newly written by-laws were accepted. For the most part they will read about the way they appeared as a proposal in NEWSLINE.

Important modifications were made. One was introduced by former Wisconsin pitcher from Rosholt and now representative of Ohio, Tom Bestul. It took considerable maneuvering to re-call a motion already voted on. Bestul handled it like a pro. Actually he was about one second ahead of Dick Hansen as the Wisconsin delegation had similar aims.

In the mixing pot were the age limits for men in the intermediate, senior, and elders classes. It was explained by Donnie Roberts that the existing age caps, the top limits, were creating classes too small for even competition. What Bestul's motion boiled down to was eliminating the intermediate class. The delegates accepted it.

Men's classes are: Open with no age limit; Senior starts at 60 yr. with no age cap; Elder starts at 70 and pitchers of that age are free to pitch from the distance of choice - 40' up to 30'. [Wisconsin pitchers over 70 yr. are referred to as the senior class.]

My book says the other important change is the number of sanctioned tournaments required for World entry. The new rule (and I believe it applies for 1993 at Spearfish, SD.) is FOUR (4) sanctioned tournaments or... three (3) and a sanctioned league average....for World Tournament entry.

The second sentence of the proposed by-laws contained the phrase, "The object of the NHPA shall be to foster, develop..." Somebody objected to the word "object". Said it should be "goal or purpose". That meant a roll call vote. Uh-huh. Check it out when the new book comes out - Article II, the title and second word. Personally this writer does not remember (or care) which word was selected, seems a sudden desire for fresh air was overwhelming.

In the words of the infamous Pogo, "We have met the enemy.., and they are us."

* * * * *

STATE TOURNAMENT PITCHERS...The Beloit Club has arranged a flat rate room offer with PLANTATION INN of \$35 per night for a two bed room. Its the same rate at the same place offered to Team World. When making reservations indicate your association with the State Tournament. 1-800-367-2501.

* * * * *

1993 tournament registrations, NHPA and/or WHPA are being accepted to formulate the schedule. Try to contact Jim Haupt by State Tournament time.

This coming year all NHPA award patches for tournament champions and class champions will include the year. Some of these embroidered patches are never seen in Wisconsin. Anybody want to sanction their DOUBLES tournament? Talk to your R.D.

* * * * *

Future World Tournament sites:

1993 Spearfish, South Dakota

1994 Syracuse, New York (Only bid received)

Re-elected as NHPA executive council officers:

Barry Chapelle, 2nd Vice President

Bonnie Seibold, 4th Vice President

Donnie Roberts, Secretary - Treasurer

NHPA computerized statistic center may become a reality. California man has been chosen as record keeper. In the process of obtaining the appropriate equipment. Watch NEWSLINE for update.

6111 MAGNOLIA DRIVE
WISCONSIN RAPIDS, WISCONSIN 54494

OFFICE: (414) 771-3750
HOME: (715) 423-4522

CHRISTOPHER J. KITTI
INVESTMENT PLANNER

 **Charter Investment Services, Inc.**
AFFILIATED WITH CAPITAL FINANCIAL SERVICES, INC.
2323 N. MAYFAIR ROAD, SUITE 502
MILWAUKEE, WISCONSIN 53226

 **BURT TROPHIES, INC.**
10885 Trophy Lane & E. 29th St.
Marshfield, Wisconsin 54449

Telephone 715 384-5839

Call or write us for all your award needs. Write for free color catalog.



WOLF RIVER RINGERS

Ken Jaeger, utility pusher at the Wolf River courts had the primary intention to introduce tournament pitching to the league members in that area. When those those pitchers did not respond in numbers expected, he introduced some regular tournament pitchers to his turf.

Hatten Park with eight courts has been there a while. The grounds are well shaded with older trees. Sand horseshoe courts have replaced a filled-in swimming pool. Of course the open pavilion with rest rooms was left over and now serves the pitchers.

Of the forty pitchers in this Saturday tournament, fifteen doubled up pitching also the following day at Germantown. Campers made this tournament a one day two night affair. Jaeger, in his effort to be the complete host, spent himself entertaining at the Campground. Kathy Jaeger was well enough Saturday to hawk tickets on bacon raffles.

Nice place, maybe you'll get to see it next year - on a different weekend.

NHPA

NATIONAL HORSESHOE PITCHERS ASSOCIATION
Official Rules for Horseshoe Pitching

Q. I had to tell my opponent at a recent tournament to please stand back with one foot on his side of the platform because he was continually all over the place when he wasn't talking to people on the other side of the fence. He said he thought it was OK as long as he was out of my view. Was I wrong?

-Blue Mycool

A. Rule 7 -Player & Member Conduct; Section e: A contestant, while not pitching, shall stand on the opposite side at least two feet behind his/her opponent. (If the competition is "mixed", the contestant shall return to the 40' platform, so as not to disturb either the opponent or contestants on adjacent courts.) The contestant shall remain stationary and silent while the opponent is pitching his/her shoes.

Blue Mycool; The rule is clear, Blue. The one foot on the platform went out when we started pitching with the gals. As is stated, disturbing behavior and talking is prohibited but only while an opponent is pitching. Its OK to say, "Gosh its windy", or, "Lookout your shoelace is dragging" at any other time. However the best phrase to use constantly on nervous opponents is the call, "Two ringers six".

-The Artful Dodger

EAGLE

The entry of any tournament varies each year. Eagle is no exception. Always a popular tournament with a gang of entries, the Eagle Open reached out this year attracting a couple of formerly well known personalities. Steve Koehn is back to pitching good shoes. And Fred Zeilstra came in all the way from Blue Spring, Missouri for the occasion.


Al Salmela has taken over the reins as tournament director. Zeilstra had to be checking things over, measuring against the days when he swung the whip. He made his presence known. His name was announced for awards and, he was up to his old tricks, keeping score.

Koehn too was up to his old tricks, like winning class "A". Years ago, when Steve Koehn was just a 40% pitcher having fun, he substituted in a top class and immediately began to equal the competition. In essence that is how he became an "A" pitcher. This weekend he did it again.

Cheers from horseshoe spectators are usually non-existent - not so at Eagle. Those folks hanging on the fence are into the game. Its refreshing to hear some encouraging noise back there even when its for the other guy. The gals especially cheered their league-mates in the 'women only' division with off-court chatter.

All the court components look to be in the same location but most everything is new. The old fence went out and the site was regraded raising some areas over a foot. New concrete platforms were poured. All courts have a short but separate platform for the 30' pitchers. New sod throughout and a new four foot fence really dresses up the layout. And as some clay pitchers found, the sand is not at all bad.

Best Award of the Day, went to Felix Kubly. The announcer said it was also a birthday of note. Happy 78th birthday to Felix Kubly.

	<p>Royal Wood SPORTS CENTER</p>	<p>WISCONSIN HORSESHOE</p>
		<p>HALL OF FAME</p>
<p>1501 CEDAR DR., PLOVER, WI 715-341-8950 - GROUP PARTIES</p>		
<p>INDOOR HORSESHOE CLAY COURTS</p>		

THE GOLD ONE

Goldendale celebrated its 21st tournament anniversary with the June edition. The gift of fair weather was well received and appreciated by all. It was all Rick Pritzlaff needed to make the Gold-One come off without a hitch.

Tournament pitchers doing double duty this weekend were in record numbers. Fifteen pitched the Wolf River event Saturday and the one on Goldendale Road Sunday. Check the results to find some double winners. Goldendale's 10-man class "A" was an offshoot of last minute entries from the Wolf. It was not easy pickin's but Mark Stevens made expenses for the weekend. Pitching double time worked out O.K. this year; next year these tournaments need separate weekends.

Pitcher-on-a-tear is Emmett Whiting. Won "C" class Saturday; moved to "A" on Sunday and finished in the money again. Watch for this pitcher to bump somebody from "A" at the State Tournament.

GOLDENDALE OPEN RESULTS

CLASS A		CLASS H	
1. Mark Stevens	62.5	1. Don Burmeister	33.2
2. Don Kangas	64.2	2. Gary Bloedorn	31.2
3. Dan Bloom	56.9	3. Jim Paegelow	25.2
4. Emmett Whiting	55.3	4. George Siira	24.0
5. Chet Ogiba	56.7	5. Bob Kabella	25.2
6. Marv Huffman	55.8	6. Chuck Moravec	23.2
7. Gus Schram	53.1		
8. Rick Pritzlaff	44.7	CLASS I	
9. Roger Poutanen	46.7	1. Archie Johnson	32.0
10. Ralph Maylahn	54.5	2. Norb Strzyzewski	26.4
		3. Norm Beckius	21.2
CLASS B		4. Dick Schoener	19.6
1. Gerald Weikert	52.0	5. John Boegel	21.2
2. Lou Bensinger	50.9	6. Al McGowan	11.6
3. John Koepf	55.4		
4. Ken Jaeger	46.3	CLASS J	
5. Cliff Troulier	40.6	1. Jim Schuster	22.8
6. Jim Haupt	36.9	2. Gene Bartley	18.0
7. Wally Srenaski	42.3	3. Wayne Franzen	17.6
8. Tony Scrima	34.6	4. Ken Hannula	16.4
		5. Dick Mackay	14.4
CLASS C		6. Phil Ganser	6.0
1. Emmett Whiting	58.4		
2. Rich Brower	55.6	CLASS K	
3. Dick Hansen	43.6	1. Steve Bartley	15.4
4. John Barden	52.4	2. Allen Puestow	10.8
5. Tom Hansen	37.2	3. Rex Hamann	12.5
6. Bob Traber	14.8	4. Bob Mattson	13.3
CLASS D		CLASS A WOMEN	
1. Jeff Secord	50.0	1. Lorraine Sternberg	66.8
2. Dennis Ambuehl	46.4	2. Joan Guetzke	47.2
3. Paul Federer	41.6	3. Elaine Troullier	52.8
4. Jim Poquette	40.0	4. Cy Srenaski	45.2
5. Ron Thompson	32.4	5. Pam Steinke	44.4
6. Shorty Gromowski	30.0	6. Jane Meier	47.2

CLASS E		CLASS B WOMEN	
1. Wayne Vanderhei	48.4	1. Caria McFarlane	44.2
2. John Secord	37.2	2. Renee Sternberg	35.4
3. Milt Larsen	37.6	3. Cathy Horn	35.0
4. Joel Bartley	28.8	4. Rita Boegel	25.0
5. Warren Knippel	31.6		
6. Terry Lokken	24.8	CLASS C WOMEN	

CLASS F		CLASS A JUNIORS	
1. Ron Sabish Jr.	48.0	1. Mark Mauthe	72.1
2. Dave Aho	33.6	2. Heidi Sternberg	41.7
3. Ken Davison	36.8	3. Penny Steinke	39.2
4. Larry McCutcheon	30.4	4. Heather Sternberg	35.0
5. Dan Jagiowski	28.8		
6. Harold Laws	26.4	CLASS B JUNIORS	

CLASS G		CLASS B JUNIORS	
1. Hal Muma	31.2	1. Adam Bartley	13.8
2. Rich Conrad	38.8	2. Paul Fricano	12.9
3. Ron Sabish Sr.	36.0	3. Lee McFarlane	11.3
4. Tim Bartley	34.0	4. Andy Bartley	9.2
5. Tom Steinke	22.0		
6. Harold Patton	15.2		

Calendar

SEPT 5-6 BELOIT DOUBLES entry \$10/person
Earl Paulson, 7105 So Co Hy H, Beloit, WI 53511
608-879-2304 Teams or individuals D/L 8-25

SEPT 6 FIREMEN'S TOURNAMENTS entry \$5/person
SHOW-UP, 1:00PM Highland, WI
Doubles matching high-low ringer percent

SEPT 12-13 WET, WINDY & WILD entry \$10
Jane Smith, RR 1 Bx 17, Balsam Lake, WI 54810
715-485-3057 NHPA SANC #28-92-091 D/L 8-29

SEPT 11-12-13 V.F.W. DOUBLES entry \$25/team
Don Navarrete, 534 Woodlawn Ct, Combined Locks 54113
414-788-1633 Mens, Ladies, & Mixed Couples D/L 8-31

SEPT 19-20 WHPA STATE TOURNAMENT entry \$16
TELFER PARK 2101 Cranston Rd, BELOIT, WISCONSIN
Deadline 8-1-92 entries closed; Schedule in mail.

OCT 3 D & G DOUBLES Entry \$10/team
Carl Gilbertson, 521 Isabell St, Highland, WI 53543
608-929-7669 BYO partner Noon start D/L 9-28

OCT 24 WHPA STATE MEETING at Royal Wood Sport Center
Plover, WI 1:00PM (No tournament has been announced)

KEWASKUM

The beginning of August starts the new horseshoe year. Its also the beginning of the get serious season in preparation for the State Tournament. Kewaskum leads off the most popular pitching month of the year.

Kewaskum, the gem of Wisconsin horseshoe courts, was found to be flawed on one aspect. The big old oaks that block the afternoon sun are so tall they do little to block the Westerly breezes. Some say it was the only windy place in all Wisconsin that Saturday.

For some it moves the shoe off course. Others say it moves them on the platform. Most all will admit the wind makes it difficult to hold their concentrated thoughts - as if the plan is a little cloud and the wind blows it away like a puff of smoke. For all, without exception, a little wind is a dandy excuse. Whatever the wind may have done, it was the price paid for a nicer Sunday.

RESULTS

A Don Kangas	64.6	Ralph Maylahn	67.1
B Norm Kuen	40.3	Cliff Troullier	42.6
C Glenn Bogenschneider	48.3	Ron Sabish Jr	42.9
D Dave Aho	34.3	Jim Jazak	31.7
E Stan Scherer	36.8	Ron Sabish Sr	33.2
F Leo Zamzow	34.4	Steve Stevens	32.4
G Dave Zuern	27.2	Dave Strupp	25.2
H Marty Wiedmeyer	32.0	Kerry Morris	28.0
I Dave Fritze	26.0	Ken Kosky	25.6
J James Riel	20.0	Gene Bartley	21.6
K Gary Colton	23.6	Ray Schmidt	14.0
L Les Unferth	17.2	Bill Charles	12.4
M Ken Knowles	8.4	Allen Puestow	8.8

LADIES

A Lorraine Sternberg	55.2	Cyrena Srenaski	55.2
B Rita Boegel	30.0	Janet Rohlinger	22.0
C Nancy Scherer	15.3	Jamie VandenHeuvel	12.0

JUNIORS

A Mark Mauthe	71.6	Heidi Strenberg	42.4
B Aaron Abel	26.0	Jerrad Voigt	16.0

This remains the only tournament where the last class awards and the results sheets are passed out simultaneously.

Herb Theisen, Rob Struebing, and crew hope to see you again next year.

BROTHERTOWN CLASSIC

Beginning early, before 8:00AM, and throughout the day classes played alongside the pasture at Archie's Place. The constant clinking went unnoticed by the heifer herd busy with their cuds. It was near 5:00PM when Class A warmed-up. The heifer herd moved in for a closer look. While Joan Guetzke talked to them in cow language, Marv (Guetzke) got behind the critters for a portrait of their backsides. The spooky cows scattered when the shutter clicked.

Besides the cows there were some other visitors trying to enter the one-day tournament at the last minute. Harold Wendorf said he came for the chicken. Earl Wiegert comes to see some shoes and Steve Wiegert came to see Earl. Gene Mason would like to have been a sub and Ron Pritzlaff came to check things out. Jane Meier was probably just enjoying a good time. Its not a bad tournament when some pitchers come just for the holiday

Another guy who never pitched a shoe was Archie Johnson, proprietor of Archie's Place (sign said closed for private party). Ralph Maylahn ran the tournament and Arch did everything else like, bartender, (of the self-serv bar), promoter, (of all types of B.S.), broiler cook for the self basting oven, and general nuisance. The four courts looked pretty good. Arch must have been using the sprinkler to soften the clay.

Didn't know it but the man can cook. He can cook great chicken and has the broiler to handle hundreds. And he can keep cooking - as long as Mary can keep cleaning and hauling the birds down to the courts.

Maylahn's feat of four class flights, the entire tournament, in one day, held all games to 40-shoes. It was a concession. He wanted to pitch all point games - maybe next time.

<u>CLASS A Men</u>	<u>wins</u>	<u>CLASS A Women</u>	<u>wins</u>		
Gus Schram	7	63.6	Elaine Troullier 4	64.0	
Don Kangas	6	60.7	Ann Opsteen	4	53.0
Ralph MAYlahn	5	60.7	Karen Hoff	2	57.5
Emmett Whiting	4	56.1	Joan Guetzke	2	48.5
Cliff Troullier	3	52.5	Darlene Sabish	2	48.0
Ray Aho (MI)	1	50.7	Phyllis Davids	1	44.0
Jim Haupt	1	46.1			
Ken Jaeger	1	43.0			

<u>CLASS B Men</u>	<u>CLASS C Mixed</u>				
Curt Behrends	7	47.1	Ron Sabish	6	32.1
Vince Jakel	6	41.8	Kathy Kelly	5	31.8
Bill Floryance	4	40.7	Roxanne Selissen	5	26.4
Gerald Gromowski	3	37.9	Ken Kosky	5	23.9
Marv Guetzke	3	37.1	Tom Steinke	4	28.2
John Crook	3	36.1	Leroy Meyer	2	17.5
Dennis Ambuehl	1	33.9	Kathy Klabecek	1	18.2
Dan Jaglowski	1	31.8	Ray Schmidt	0	13.2



**WISCONSIN HORSESHOE
PITCHING SUBDISTRIBUTORS**

GAME RELATED ITEMS

Elaine & Cliff Troullier

3126 Wagon Wheel Road, Manitowoc, WI 54220
(414) 682-3197

(The PAUL NEUMANN display)

LETTERS

TO THE EDITOR:

This is in response to the letter in the March issue of the Newsletter.

I also agree that the present cost to enter tournaments is not too high. To win a portion of it in prizes is a good idea. But, for one individual to win all of the prizes, whether it be money or trophies, would in my opinion lead to cut-throat competition and a decline in entries.

Of all the tournaments that I have competed in, I find the Fillmore Open has a good format, 1st and 2nd place trophy and money for the first half of a class.

State Tournament - (It was stated that, "the trophies were simply too large and assumed very costly, so do away with them and play for money.")

Having served on the trophy committee for the tournament held in Fond du Lac in 1991, I can attest to the fact that the 1st, 2nd and 3rd place winners received a fine quality (and large) trophy. The cost of them were not as high as people may assume.

A state trophy carries more prestige and brings a greater significance to the tournament, where as a small cash prize is soon spent.

Thank You, Ray Schmidt, Fon du Lac

ATTENTION JIM HAUPT:

Dear Friend,

I enjoy the horseshoe pitchers newsletter very much. I did however take exception to your article, "Underground Horseshoes".

The tournament you referred to was the class "A" Funfest Tournament held annually at the Arena Funfest except for 1991 when they decided not to have one. This is and has been run by my good friend, Ken Amble and has been an invitational tournament. Ken has tried to keep it local as much as possible and I think it is not to be considered an A tournament like a state tournament. More or less for local A pitchers otherwise Ken would not accept me to pitch in it. By the way it is a 4-man team event. This last tournament saw the first four teams separated by 11 points so the competition was keen. So please don't feel they want to avoid anyone.

Ken does a wonderful job running this tournament and the price was right, \$2.00

per person, just a fun tournament.

I hope this clears the air, Jim, and if I don't see you before, I hope to see you at the State Tournament in Class ?.

Sincerely, Carl Gilbertson, Highland

To WHPA Members,

We would like to thank you for sponsoring us in the Team World Tournament. We appreciate your support.

Jane Smith, Randy Rein, John Udelhofen & Edie McKinney

FROM THE EDITOR:

First of all, we, here at the newsletter would like to thank the Eau Claire Horseshoe Club for awarding a newsletter subscription as one of the prizes at the tournament. It really helps to have some new subscribers included on the list each time.

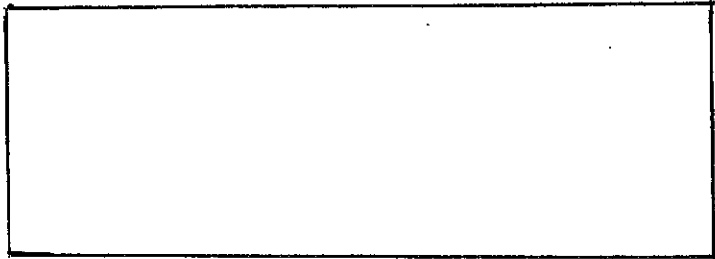
Two letters this month pertinent to issues brought out in the newsletter. This is what we want from you. Opening an envelope with a letter inside instead of a renewal check, (we do appreciate them also) gives me that extra push to get another issue out.

We had no response to Curt Bestul's idea last month concerning scorekeepers pay at \$5.00 per pitcher, \$10 a game. I would guess that Curt heard some verbal remarks about this.

I think it's about time to raise the score-keepers fee to a \$1.00 per pitcher, per game. If you think about a 6-man class, 50 shoes, a half hour per game, they make \$5.00. For 2½ hours of hot; cold; rainy; windy or sometimes good conditions, they deserve more than what they are getting. A tournament director may be getting requests to help mark score instead of them going out to the spectators to ask for scorekeepers. I think people who would like to go to a tournament and watch the competition, may stay away for the reason they may be asked to mark score. I know when I go, I like to visit with the people or watch some games and when asked to mark score and you refuse, it makes you feel guilty, well anyway, I do. So, what are your ideas on this matter, write to us!

WISCONSIN HORSESHOE NEWSLETTER
W204 N11912 GOLDENDALE ROAD
GERMANTOWN, WI 53022

BULK RATE
U.S. POSTAGE
PAID
PERMIT NO. 25
GERMANTOWN, WI
53022



CHECK OUT THE NEW EXPANDED
FACILITIES!

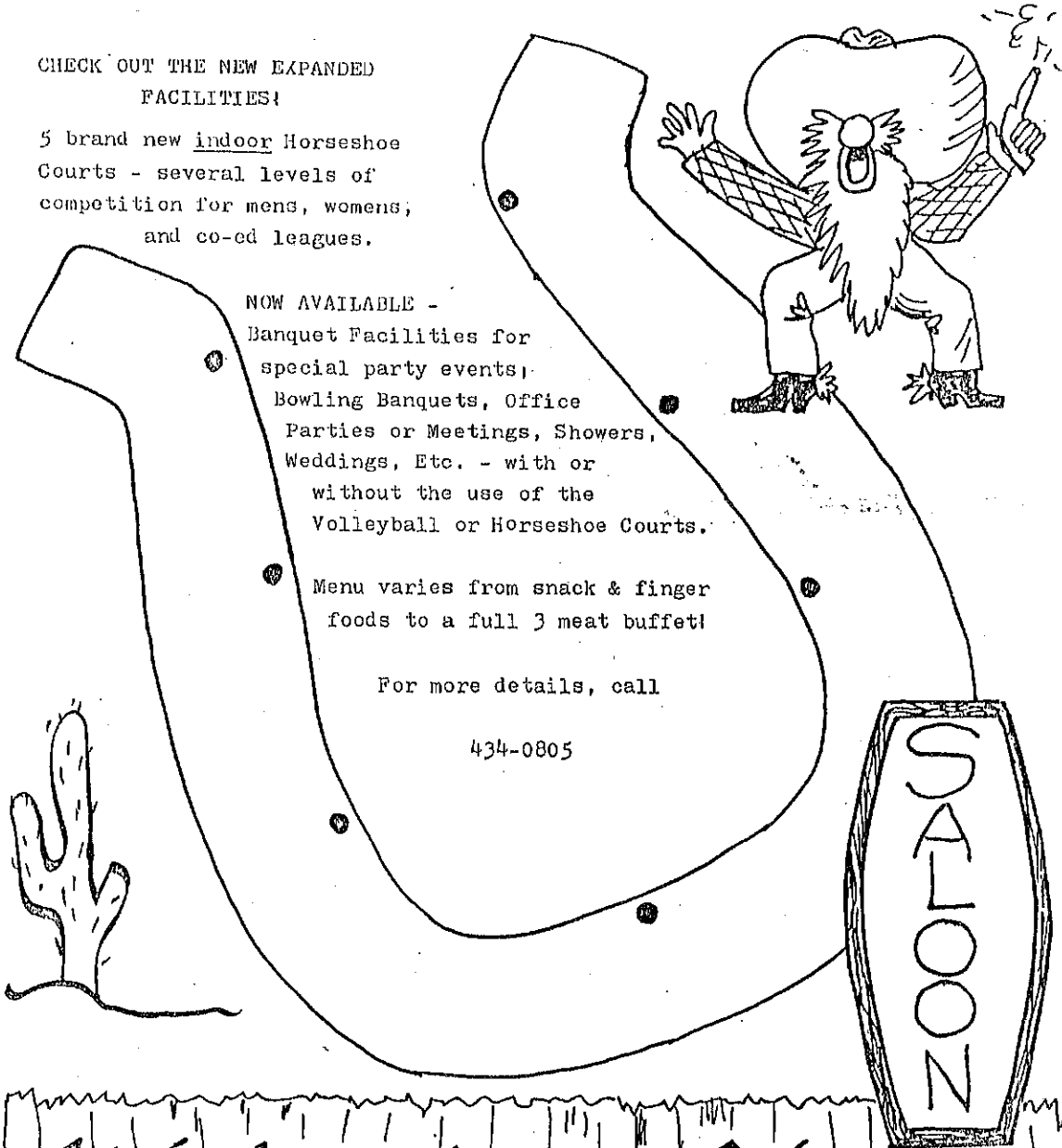
5 brand new indoor Horseshoe
Courts - several levels of
competition for mens, womens,
and co-ed leagues.

NOW AVAILABLE -
Banquet Facilities for
special party events,
Bowling Banquets, Office
Parties or Meetings, Showers,
Weddings, Etc. - with or
without the use of the
Volleyball or Horseshoe Courts.

Menu varies from snack & finger
foods to a full 3 meat buffet!

For more details, call

434-0805



Watering Hole
2107 Velp Ave. Green Bay, WI