

Little Bull Falls  
Horseshoe Club

94<sup>th</sup>

**WISCONSIN**  
STATE HORSESHOE CHAMPIONSHIPS

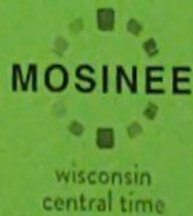
Mosinee, WI

September 3<sup>rd</sup> - 4<sup>th</sup>, 2016

**WELCOME  
PITCHERS!**







## City of Mosinee

225 Main Street, Mosinee, Wisconsin 54455 715/693-2275 Fax: 715/693-1324  
[www.mosinee.wi.us](http://www.mosinee.wi.us)

*American Planning Association National Award Community*

I am writing on behalf of the City of Mosinee to welcome participants and spectators to the Wisconsin Horseshoe Pitchers Association's 2016 State Championship Tournament.

We are extremely excited to again be the host City for this year's State Championship Tournament, as we are very proud to be the hometown of nineteen-time State Horseshoe Champion Randy Rein!

As typically found with other communities located on a major river system, the City was established in 1836 as a logging/sawmill operation and the logging industry is still a very important industry to the community today. The town was originally known as "Little Bull Falls" up until 1857, when a post office was established in the community and the name was changed to Mosinee. Mosinee was officially incorporated as a village in 1899.

Today, Mosinee still remains a collection of friendly people, a colorful history, a successfully growing business base and a small-town atmosphere that is an attractive place to bring your family and business.

While in Mosinee, I would like to encourage you to visit our beautiful historical downtown area which offers an excellent variety of shops and restaurants that proudly provide small-town friendly service. While in the downtown area, please also feel welcome to take a stroll on our beautiful Wisconsin Riverwoods Trail (located just east of the gas station on Main Street) and also visit River Park which is located along the beautiful Wisconsin River (just three blocks north of the Recreation Center on Main Street). We would also encourage you to tour our vibrant Central Wisconsin Business Park which is located just east of the Interstate 39/U.S. Highway 51, across from the Central Wisconsin Airport. If you are interested in learning more about all that Mosinee has to offer please visit [www.mosinee.wi.us](http://www.mosinee.wi.us) and take a video tour of Mosinee by checking out our community videos on the left side of the homepage.

We trust that you will thoroughly enjoy your experience while in Mosinee and we would certainly welcome the opportunity for the City to again host the State Championship Tournament in the near future!

Sincerely,

Brent Jacobson

Mayor

[mayor@mosinee.wi.us](mailto:mayor@mosinee.wi.us)



# Thanks for entering the 94th State Horseshoe Tournament.

Hosted by Little Bull Falls Horseshoe Club.

*The officers and club members are honored to host the 2016 Wisconsin State Horseshoe Championships. We welcome you to the City of Mosinee. While here, please take time to patronize the establishments that helped sponsor your tournament and thank them. Good luck to all pitchers.*



## CLUB OFFICERS

PRESIDENT..... Randy Rein  
VICE PRESIDENT..... Kent Frailing  
SECRETARY.....Randy Mitchell  
TREASURER..... John Olson

Championship Classes will be 40 point games with exception being Cadet's Championship will play 30 points or 30 shoes whichever comes first.

All other adult classes will play 40 or 50 shoes as decided by the WHPA Council.

The Hall of Fame and Award Ceremony will be held on Sunday following the morning session.

Please check in 30 minutes before your scheduled pitching time.

**ALL PITCHERS MUST HAVE THEIR NAME  
ON THE BACK OF THEIR SHIRT. FAILURE TO COMPLY WILL  
RESULT IN A \$5.00 FINE.**

Sunday morning Church Service with Chaplain Ken Heinritz at 8:00 am in the small meeting room at the Rec. Center.

**NO CARRY INS...FOOD & DRINKS AVAILABLE AT THE COURTS.**

**Contact # at the courts - (715) 573-6891 Randy Rein-Tournament Director**

# WHPA OFFICERS

## **PRESIDENT**

Gary Volz  
508 Tanglewood Drive  
DeForest, WI 53532  
(608) 444-8563 • whpagvolz@gmail.com

## **MARKETING / PUBLICITY**

Fred Lane  
541 2nd Street North  
Stevens Point, WI 54481  
(715) 347-2507 • fred-lane@live.com

## **1ST VICE PRESIDENT**

Jane Smith  
1481 180th Avenue  
Balsam Lake, WI 54810  
(715) 485-3057 • kirbys007@centurytel.net

## **WHPA WEBMASTER**

Dave Volz  
W7133 Geier Road  
Wonewoc, WI 53968  
(608) 547-2769 • davevolz@hotmail.com

## **2ND VICE PRESIDENT**

Kevin Brekke  
1802 West Lois Lane  
Edgerton, WI 53534  
(608) 669-1218 • brekkekev3@netscape.net

## **WI / NHPA REGIONAL DIRECTOR**

John Meyer  
500 Martin Drive  
Fond du Lac, WI 54935  
(920) 921-2936 • jhmey64@hotmail.com

## **3RD VICE PRESIDENT**

**DIRECTOR**  
Sonia Cook  
D1483 Second Street  
Stratford, WI 54484  
(715) 384-5540 • cook\_sonia@yahoo.com

## **NHPA JUNIOR PROMOTION**

Aleena (Cook) Lepak  
D1483 2nd Street  
Stratford, WI 54484  
(715) 650-0637 • aleena\_cook5@hotmail.com

## **SECRETARY-TREASURER**

**DIRECTOR**  
John Secord  
W6868 Brown Road  
Fond du Lac, WI 54937  
(920) 922-0080 • whpajs@charter.net

## **NHPA GAME RELATED SALES**

Beloit Horseshoe Club  
640 Ravine Drive  
Beloit, WI 53511  
(608) 365-9901 • epauls@live.com

## **HALL OF FAME - CHAIR**

Jeff Secord  
W2805 Johnsburg Road  
Fond du Lac, WI 54937  
(920) 795-4171 • jeffsecord@outlook.com

## **ON THE WEB**

NHPA Site: <http://horseshoepitching.com>  
Email: [info@horseshoepitching.com](mailto:info@horseshoepitching.com)

## **WHPA CHAPLAIN**

Ken Heinritz  
N95W22107 Cty. Rd. Q  
Colgate, WI 53017  
(262) 255-7339 • heinritzken@gmail.com



# Wisconsin Hall of Fame Members

1976	Harvey Elmeron	Wisconsin Rapids	Pitcher
	Casey Jones	Plymouth	Pitcher
1977	Arthur Niemann	Milwaukee	Promoter
1978	Edward Wing	Germantown	Pitcher/Promoter
1979	Tommy Bartlen	West Allis	Pitcher
	Swen Bowman	Green Bay	Promoter
1980	Arnie Rupnow	Oconomowoc	Promoter
	Wally Saeger	Ixonia	Pitcher
1981	Bill Glass	Vesper	Pitcher
	Carl Pfeffer	Milwaukee	Pitcher
1982	Art Klement	Fort Atkinson	Promoter
	Ed Schimek	Milwaukee	Pitcher
1983	Henry Bartel	Wautoma	Promoter
	Ann Opsteen	Combined Locks	Promoter
1984	Harold Bestul	Rosholt	Pitcher
	Bob Wilke	Berlin	Pitcher
1985	Curt Bestul	Eau Claire	Pitcher/Promoter
	Beaty Bestul	Eau Claire	Promoter
	C.L. Ollerman	Fond du Lac	Promoter
	Archie Johnson	Brothertown	Promoter
	Ester Voigt	Fillmore	Promoter
1986	Pat Eaton	Eau Claire	Pitcher/Promoter
	Carl Joppe	Green Bay	Pitcher
	Jerry Kamps	Combined Locks	Promoter
1987	Susie Pritzlaff	Germantown	Promoter
	Ray Sprecht	Marshfield	Promoter
1988	Darlene Ebert	Fredonia	Pitcher
	Harold Scheets	San Diego, CA	Pitcher
1989	Forrest Mitchell	Wausaukee	Promoter
	Royce Wrucke	Horicon	Pitcher
1990	Ralph Maylan	Genesee Depot	Pitcher/Promoter
	Earl Ramquist	Beloit	Pitcher/Promoter
1991	Charles Christoplis	Sheboygan	Promoter
	Wally Srenaski	Green Bay	Promoter
	Cyrena Srenaski	Green Bay	Pitcher/Promoter
1992	John Secord	Fond du Lac	Promoter
	Jane Smith	Balsam Lake	Pitcher/Promoter
1993	Bon Phelan	Appleton	Promoter
1994	Felix Kubly	Watertown	Promoter
1995	Rick Pritzlaff	Germantown	Pitcher/Promoter

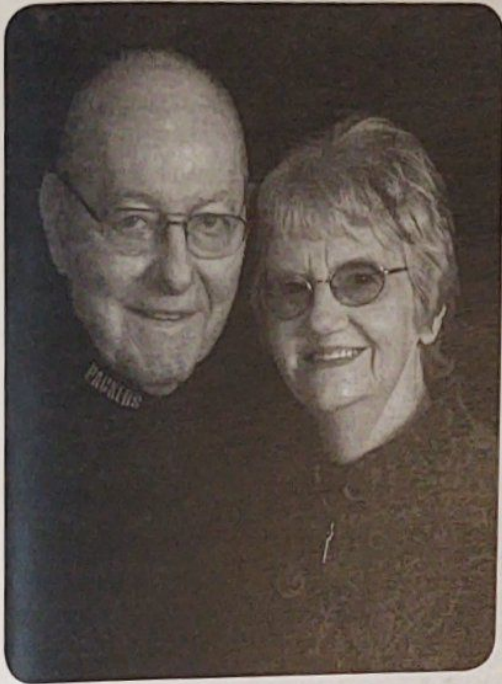


1996	Jim Haupt	Milwaukee	Promoter
	Howie Voiles	Lannon	Promoter
1997	Ray Billen	Kenosha	Promoter
	John Bezina	Boyceville	Promoter
	**Ray Hill	Ironwood, MI	Pitcher
1998	Dick Hansen	Franksville	Promoter
1999	Norm Mauthe	Platteville	Promoter
2000	Sid Anderson	Janesville	Pitcher
2001	Clayton Gage	Milltown	Pitcher
	Earl Paulson	Beloit	Promoter
	**Red Ferguson	South Beloit, IL	Promoter
2002	Lorraine Sternberg	Richfield	Pitcher/Promoter
2003	Randy Rein	Mosinee	Pitcher
2004	Edie McKinney	Luck	Pitcher/Promoter
2005	Ken Kosky	Schofield	Promoter
	Ken Jaeger	New London	Promoter
2006	Terry Sternberg	Richfield	Pitcher/Promoter
2007	Bun Carley	Richland Center	Pitcher
2008	John Udelhofen	Barneveld	Pitcher
2009	Gert Wilcziek	Whitehall	Pitcher
2010	Norval "Bud" Renley	Beloit	Pitcher/Promoter
2011	Mark Stevens	Marengo	Pitcher
2012	Norm "Mouse" Beckius	Beloit	Promoter
2013	Cliff Troullier	Whiteslaw	Promoter
	Elaine Troullier	Whitelsaw	Promoter
2014	Gene Mason	Appleton	Pitcher/Promoter
2015	Tom Steinke	Eagle	Promoter
	Rudy Van Fleet	Columbus	Promoter
2016	Dan David	Marshfield	Promoter
	Sylvia David	Marshfield	Promoter

\*\* Honorary Hall of Fame Member



## Dan & Sylvia David Hall of Fame Inductees



Daniel & Sylvia David were two gentle people who fiercely supported their passion of the sport of horseshoe pitching.

Their backyard neighborhood evening horseshoe pitching transferred to the organized city leagues in 1976. Sylvia petitioned the men's league to allow women to pitch competitively and has been both a teammate and opponent to husband Dan. She quickly became one of the best female pitchers in the area—at least until her daughter and granddaughters embraced the sport. Dan held his own in multiple leagues-especially when the Marshfield Club boasted over 160 members.

Dan has been a Marshfield Club Board Member and Sylvia held the office of Secretary for many years. Sylvia held the Club President position for over 20 years. As the league population declined, they took over director of the annual sanctioned tournament.

Dan and Sylvia became a constant force encouraging young pitchers and spreading the sport through active demonstrations. Several years they ran a modified tournament for Marshfield Area Special Olympics, helped arrange the purchase of a children's curly slide for the playground adjacent to the city courts, and administered scholarships to both Columbus High School and Marshfield Senior High School many years. When the Central WI Horse Expo was in town - they were instrumental in setting up a horseshoe pitching demonstration area. Sylvia spent many afternoons assisting the Stratford High School Phy.Ed. teacher's with a session of learning our sport.

Sylvia documented the clubs horseshoe pitching presence in Marshfield - by co-authoring an article in the book: *The Marshfield Story "Windows to our Past" Volume 2.*

Dan and Sylvia loved the Family of pitchers at the local, state, and world level. They spent countless hours supporting their club members and of course their grand daughters accomplishments of three World and multiple State Jr. Championships over thirteen years.

Many of you have witnessed their endless time marking score, turning pits when pit crews used to run out and turn pits for players, or just plain helping whenever it was needed for tournaments, leagues, or around the courts.

The people pitching and supporting horseshoes are the heart and soul of this sport. Just starting a conversation with either Dan or Sylvia and the topic quickly turned to pitching horseshoes and their passion for it.

*Congratulations to Dan & Sylvia, as they are truly worthy members of the Wisconsin Hall of Fame.*

2015 Boy's Cadet Champion  
Nicholas Prasad  
2015 Girl's Cadet Champion  
Sarah Chalco



# 2015 State Horseshoe Champions



**2015 Men's Champion  
Randy Rein**



**2015 Women's Champion  
Aleena Lepak**



**2015 Elder's Champion  
Larry Grabowski**



# 2015 State Horseshoe Champions



**2015 Junior Girl's Champion  
Emily Lazaris**



**2015 Junior Boy's Champion  
Gunnar David**



**2015 Boy's Cadet Champion  
Nicholas Prasalowicz**



**2015 Girl's Cadet Champion  
Sarah Chaffee**



## Wisconsin Men's Champions

1923	Forrest Mitchell	Wausauka
1924	Seymour Johnson	Madison
1925	Floyd Billings	Waukesha
1926	Harvey Elmeron	Milwaukee
1927	Harvey Elmeron	Milwaukee
1928	Harvey Elmeron	Milwaukee
1929	Harvey Elmeron	Milwaukee
1930	Harvey Elmeron	Milwaukee
1931	Harvey Elmeron	Milwaukee
1932	Harold Scheets	Waukesha
1933	Harold Scheets	Waukesha
1934	Harvey Elmeron	Milwaukee
1935	Casey Jones	Waukesha
1936	Casey Jones	Waukesha
1937	Casey Jones	Waukesha
1938	Casey Jones	Waukesha
1939	Casey Jones	Waukesha
1940	Casey Jones	Waukesha
1941	Harvey Elmeron	Milwaukee
1942	Casey Jones	Waukesha
1943	Harvey Elmeron	Milwaukee
1944	Casey Jones	Waukesha
1945	Casey Jones	Waukesha
1946	Casey Jones	Waukesha
1947	Mike Barschy	Milwaukee
1948	Casey Jones	Waukesha
1949	Tommy Bartlen	West Allis
1950	Casey Jones	Waukesha
1951	Casey Jones	Waukesha
1952	Casey Jones	Waukesha
1953	Tommy Bartlen	West Allis
1954	Casey Jones	Waukesha
1955	Earl Ramquist	Beloit
1956	Carl Pfeffer	Milwaukee
1957	Tommy Bartlen	West Allis
1958	Carl Pfeffer	Milwaukee
1959	Tommy Bartlen	West Allis
1960	Ed Schimek	Milwaukee
1961	Casey Jones	Waukesha
1962	Ed Schimek	Milwaukee
1963	Ed Schimek	Milwaukee
1964	Wally Saeger	Milwaukee
1965	Tommy Bartlen	Ixonia
1966	Carl Joppe	West Allis
1967	Tommy Bartlen	Green Bay
1968	Bill Glass	West Allis
1969	Bill Glass	Vesper
1970	Bill Glass	Vesper
		Vesper

## Wisconsin Men's Champions

1971	Bill Glass	Vesper
1972	Ralph Maylan	Genesee Depot
1973	Harold Scheets	Milwaukee
1974	Bill Glass	Vesper
1975	Harold Scheets	Milwaukee
1976	Harold Scheets	Milwaukee
1977	Rick Pritzlaff	Germantown
1978	Bill Glass	Vesper
1979	Bill Glass	Vesper
1980	Bill Glass	Vesper
1981	Curt Bestul	Eau Claire
1982	John Udelhofen	Platteville
1983	Harold Bestul	Rosholt
1984	John Udelhofen	Platteville
1985	Carl Joppe	Green Bay
1986	Mark Stevens	Marengo
1987	Mark Stevens	Marengo
1988	Mark Stevens	Marengo
1989	Don Kangas	West Allis
1990	Randy Rein	Mosinee
1991	John Udelhofen	Barneveld
1992	Don Kangas	West Allis
1993	Randy Rein	Mosinee
1994	Randy Rein	Mosinee
1995	Randy Rein	Mosinee
1996	Randy Rein	Mosinee
1997	Don Kangas	West Allis
1998	Randy Rein	Mosinee
1999	Mark Mauthe	Platteville
2000	Randy Rein	Mosinee
2001	Mark Mauthe	Platteville
2002	Randy Rein	Mosinee
2003	Randy Rein	Mosinee
2004	Randy Rein	Mosinee
2005	Mark Mauthe	Platteville
2006	Randy Rein	Mosinee
2007	Randy Rein	Mosinee
2008	Randy Rein	Mosinee
2009	Ken Heinritz	Colgate
2010	Randy Rein	Mosinee
2011	Randy Rein	Mosinee
2012	Randy Rein	Mosinee
2013	Randy Rein	Mosinee
2014	Randy Rein	Mosinee
2015	Randy Rein	Mosinee

## Wisconsin Women's Champions

1969	Sella Dollevoet	Little Chute
1970	Marion Ristau	Combined Locks
1971	Marion Ristau	Combined Locks
1972	Darlene Ebert	Fredonia
1973	Darlene Ebert	Fredonia
1974	Darlene Ebert	Fredonia
1975	Darlene Ebert	Fredonia
1976	Pat Eaton	Eau Claire
1977	Pat Eaton	Eau Claire
1978	Pat Eaton	Eau Claire
1979	Pat Eaton	Eau Claire
1980	Pat Eaton	Eau Claire
1981	Jane Smith	Balsam Lake
1982	Shary Klopp	Eau Claire
1983	Shary Klopp	Eau Claire
1984	Pat Eaton	Eau Claire
1985	Pat Eaton	Eau Claire
1986	Pat Eaton	Eau Claire
1987	Jane Smith	Balsam Lake
1988	Jane Smith	Balsam Lake
1989	Jane Smith	Balsam Lake
1990	Jane Smith	Balsam Lake
1991	Edie McKinney	Luck
1992	Lorraine Sternberg	Richfield
1993	Lorraine Sternberg	Richfield
1994	Lorraine Sternberg	Richfield
1995	Lorraine Sternberg	Richfield
1996	Jane Smith	Balsam Lake
1997	Lorraine Sternberg	Richfield
1998	Gert Wilcziek	Whitehall
1999	Lorraine Sternberg	Richfield
2000	Gert Wilcziek	Whitehall
2001	Gert Wilcziek	Whitehall
2002	Lorraine Sternberg	Richfield
2003	Gert Wilcziek	Whitehall
2004	Gert Wilcziek	Whitehall
2005	Gert Wilcziek	Whitehall
2006	Gert Wilcziek	Whitehall
2007	Gert Wilcziek	Whitehall
2008	Gert Wilcziek	Whitehall
2009	Gert Wilcziek	Whitehall
2010	Pam Aiken	Oak Creek
2011	Gert Wilcziek	Whitehall
2012	Aleena Cook	Stratford
2013	Aleena Cook	Stratford
2014	Aleena Cook	Stratford
2015	Aleena Lepak	Stratford

## Wisconsin Elder Men's Champions

1987	Sid Anderson	Janesville
1988	Royce Wruckle	Horicon
1989	Sid Anderson	Janesville
1990	Sid Anderson	Janesville
1991	C.L. Ollerman	Fond du Lac
1992	Ralph Maylan	Genesee Depot
1993	Ralph Maylan	Genesee Depot
1994	Ralph Maylan	Genesee Depot
1995	Clayton Gage	Milltown
1996	Clayton Gage	Milltown
1997	Clayton Gage	Milltown
1998	Clayton Gage	Milltown
1999	Clayton Gage	Milltown
2000	Clayton Gage	Milltown
2001	Clayton Gage	Milltown
2002	Clayton Gage	Milltown
2003	Clayton Gage	Milltown
2004	Clayton Gage	Milltown
2005	Clayton Gage	Milltown
2006	Clayton Gage	Milltown
2007	Gene Mason	Appleton
2008	Vince Jakel	Spencer
2009	Paul Wilson	Janesville
2010	Norm Gage	Milltown
2011	Wayne Lemar	LaCrosse
2012	Ron Button	Waupaca
2013	Ron Button	Waupaca
2014	Ron Button	Waupaca
2015	Larry Grabowski	Cameron



# Wisconsin Junior Boy's Champions Wisconsin Junior Girl's Champions

1973	Randy Pritzlaff	Germantown	1976	Nancy Mulry	Combined Locks
1974	Tim Semingson	Elk Mound	1977	Linda VanDeurzen	Combined Locks
1975	Tim Schommer	Combined Locks	1978	Nancy Mulry	Combined Locks
1976	Bret Pritzlaff	Germantown	1979	Nancy Mulry	Combined Locks
1977	Bret Pritzlaff	Germantown	1980	Nancy Mulry	Combined Locks
1978	Bret Pritzlaff	Germantown	1981	Tammie Mattson	Combined Locks
1979	Bret Pritzlaff	Germantown	1982	Debbie Bestul	Menomonee Falls
1980	Kirk Bartnik	Mountain	1983	Debbie Bestul	Eau Claire
1981	Bret Pritzlaff	Germantown	1984	Debbie Bestul	Eau Claire
1982	Hank Schwartz	Sheboygan	1985	Debbie Bestul	Eau Claire
1983	Hank Schwartz	Sheboygan	1986	Debbie Bestul	Eau Claire
1984	Hank Schwartz	Sheboygan	1987	Debbie Bestul	Eau Claire
1985	Hank Schwartz	Sheboygan	1988	Debbie Bestul	Eau Claire
1986	Rich Weishoff	Portage	1989	Renee Sternberg	Eau Claire
1987	Ken Jaeger	New London	1990	Pam Steinke	Richfield
1988	Ken Jaeger	New London	1991	Heidi Sternberg	Waukesha
1989	Ken Jaeger	New London	1992	Heidi Sternberg	Richfield
1990	Mark Mauthe	Platteville	1993	Heidi Sternberg	Richfield
1991	Mark Mauthe	Platteville	1994	Penny Steinke	Waukesha
1992	Mark Mauthe	Platteville	1995	Penny Steinke	Waukesha
1993	Jason Goldsmith	Janesville	1996	Penny Steinke	Waukesha
1994	Shannon Rein	Mosinee	1997	Nicole Riehle	Auburndale
1995	Jason Goldsmith	Janesville	1998	Nicole Riehle	Auburndale
1996	Wesley Rein	Mosinee	1999	Nicole Riehle	Auburndale
1997	Dustin "Pudge" Dahl	Trempealeau	2000	Tava Cook	Stratford
1998	Barrent Dahl	Trempealeau	2001	Tava Cook	Stratford
1999	Barrent Dahl	Trempealeau	2002	Tara Riehle	Auburndale
2000	Dustin "Pudge" Dahl	Trempealeau	2003	Tara Riehle	Auburndale
2001	Wesley Rein	Mosinee	2004	Tava Cook	Stratford
2002	Kirby King	Stevens Point	2005	Aleena Cook	Stratford
2003	Nathan Heinritz	Pewaukee	2006	Kiri Cook	Stratford
2004	Ryan Hyatt	Racine	2007	Aleena Cook	Stratford
2005	Nathan Heinritz	Pewaukee	2008	Aleena Cook	Stratford
2006	Ryan Hyatt	Racine	2009	Aleena Cook	Stratford
2007	Nathan Heinritz	Menomonee Falls	2010	Bethany Heinritz	Pewaukee
2008	Beau Davison	Centuria	2011	Heather Feavel	Van Dyne
2009	Jacob Birch	Kenosha	2012	Heather Feavel	Van Dyne
2010	Gunnar David	Marshfield	2013	Heather Feavel	Van Dyne
2011	Gunnar David	Marshfield	2014	Heather Feavel	Van Dyne
2012	Gunnar David	Marshfield	2015	Emily Lazaris	Colgate
2013	Gunnar David	Marshfield			
2014	Mason Bisch	Baraboo			
2015	Gunnar David	Marshfield			

## Boy's Cadet Champion

2007	Gunnar David	Marshfield
2008	Gunnar David	Marshfield
2009	Blake Lazaris	Colgate
2010	Steve Lazaris	Colgate
2011	Steve Lazaris	Colgate
2012	Nicholas Prasalowicz	Adams
2013	Steve Lazaris	Colgate
2014	Steve Lazaris	Colgate
2015	Nicholas Prasalowicz	Adams

## Girl's Cadet Champion

2007	Mary Ann Aiken	Waukesha
2008	Christina Heinritz	Pewaukee
2009	Abigail Aiken	Oak Creek
2010	Abby Aiken	Oak Creek
2011	Alisha Prasalowicz	Adams
2012	Brooke Lazaris	Colgate
2013	Brooke Lazaris	Colgate
2014	Brooke Lazaris	Colgate
2015	Sarah Chaffee	Chippewa Falls

## President's Award Recipients

1993	Ann Opsteen
1994	Curt & Beaty Bestul
1995	Jim Haupt/Susie Pritzlaff
1996	Dick Hansen
1997	John Secord
1998	Earl Paulson
1999	Ken Kosky
2000	Lorraine Sternberg
2001	Jane Smith
2002	"No Award Given"
2003	Dave Forseth
2004	Bun & Shirley Carley
2005	Beloit Horseshoe Club
2006	Jeff Secord
2007	Pam Aiken
2008	Ken Heinritz
2009	Terry Sternberg
2010	Ed Wheeler
2011	Kevin Brekke
2012	Tom Steinke
2013	Edie McKinney
2014	Mark Mauthe
2015	Ray Goskinsky

## Club Team Champions

1985	Goldendale
1986	Pitchin'Palace
1987	Green Bay
1988	Janesville Moose
1989	Green Bay
1990	Wausau
1991	Platteville
1992	Platteville
1993	Windy Hill
1994	Goldendale
1995	Goldendale
1996	Goldendale
1997	Close Doesn't Count
1998	Goldendale
1999	Close Doesn't Count
2000	Close Doesn't Count
2001	Close Doesn't Count
2002	Kenosha
2003	Close Doesn't Count
2004	Close Doesn't Count
2005	Close Doesn't Count
2006	Close Doesn't Count
2007	Beloit
2008	Close Doesn't Count
2009	Beloit
2010	Close Doesn't Count
2011	Heinritz Clan
2012	Muskego Moose
2013	Deansville
2014	Muskego Moose
2015	Summit Ridge
2016	Deansville

## Most Improved

2000	Tom Costa/Everett Stewart
2001	Kirby King
2002	Steve Kuhlow
2003	Dan Meindel
2004	Jane Smith
2005	Nathan Heinritz
2006	Nathan Heinritz
2007	John Brugger/Beau Davison
2008	Don Goldsmith/Gunnar David
2009	Kiri Cook
2010	Mark Gagnon
2011	Lonny Trangsrud/Gunnar David
2012	Linda Roeber/Christina Heinritz
2013	Ron Button/Emily Lazaris
2014	Ann Murray/Carilyn Trangsrud
2015	Isaac Wegner/Dick Hanold



## State Tournament Teams

1990	Eau Claire
1991	Close Doesn't Count
1992	Eau Claire
1993	Close Doesn't Count
1994	Goldendale
1995	Close Doesn't Count
1996	Close Doesn't Count
1997	Close Doesn't Count
1998	Marshfield
1999	Combined Locks
2000	Eau Claire
2001	Close Doesn't Count
2002	Eau Claire
2003	Eau Claire
2004	Eau Claire
2005	Eau Claire
2006	Beloit
2007	Close Doesn't Count
2008	Marshfield
2009	Little Bull Falls Horseshoe Club
2010	Marshfield
2011	Marshfield
2012	Marshfield
2013	New London
2014	Summit Ridge
2015	Eau Claire

## State Double's Champions

1997	John Udelhofen/John Crook
1998	Ralph Maylan/Tony Schirma
1999	Randy Rein/Gus Schram
2000	Lorraine Sternberg/Pam Aiken
2001	Lorraine Sternberg/John Crook
2002	Wayne Totten/Bun Carley
2003	Randy Rein/Jim Larson
2004	Gert Wilcziek/Ron Wilcziek
2005	Randy Rein/Jim Larson
2006	Penny Steinke/Dan Bloom
2007	John Udelhofen/Jim Larson
2008	Randy Rein/Ryan Hyatt
2009	Randy Rein/Norm Gage
2010	Jeff Gustafson/Ken Heinritz
2011	Tony Scrima/Pam Aiken
2012	Gert Wilcziek/Lonny Trangsrud
2013	Gert Wilcziek/Lonny Trangsrud
2014	Gert Wilcziek/Lonny Trangsrud
2015	Lonny Trangrud/John Brophy
2016	Gunnar David/Randy Rein

## Pitcher of the Year Award

1990	Bob Jackson
1991	Randy Rein
1992	Tom Steinke
1993	Ralph Maylan
1994	Randy Rein
1995	Randy Rein/Lorraine Sternberg
1996	Lorraine Sternberg
1997	Clayton Gage
1998	Clayton Gage
1999	Ralph Maylan
2000	Randy Rein
2001	Randy Rein
2002	Mark Mauthe
2003	Randy Rein
2004	Don Burmeister/Milt Larsen/Sue Lange
2005	Randy Rein
2006	Mark Mauthe/Rowen Swick/ Tom Steinke
2007	Kevin Brekke/Rowen Swick/ Penny Steinke
2008	Randy Rein/John Garvan/ Jim Haupt/Ed Wheeler
2009	Randy Rein/John Garvan/ Jim O'Loughlin
2010	Randy Rein/Rowen Swick/Jim Haupt
2011	Randy Rein/Jim Haupt/Tom Steinke
2012	Randy Rein/Kevin Brekke/Tom Steinke
2013	Ron Button/John Olson/Rondi Mengelt
2014	Glenn Bogenschneider/Tony Scrima/ Greg Bergles
2015	Glenn Bogenschneider/Susie Erickson/ Tom Steinke

## Scorekeeper of the Year

1997	Jane Smith
1998	Elly McCarn
1999	Edie McKinney
2000	Ralph Maylan
2001	Gloria Smith
2002	Steve Stevens
2003	Kevin Brekke
2004	Jim Haupt
2005	Carol Crook/Sonny Cockcroft

**94th Wisconsin State Horseshoe Tournament**  
**Mosinee Rec. Center - 701 11th Street - Mosinee, WI • September 3rd - September 4th, 2016**

**CHAMPIONSHIP ELDERS-Sunday, Sept. 4th - 2:00 pm**

280148	LARRY GRABOWSKI	CAMERON	DC 63.82
280236	JIM BILDERBACK	BIRCHWOOD	69.83
280438	RON BUTTON	WAUPACA	68.99
280204	GLENN BOGENSCHNEIDER	SLINGER	62.59
280319	JOHN BROPHY	GALESVILLE	55.46
280217	LEO RICHTER	STOUGHTON	54.21
	<b>WINNER OF A ELDERS</b>		
	<b>HIGH % OF A ELDERS</b>		

**CLASS A ELDERS-Saturday, Sept. 3rd - 8:00 am**

280265	DAVE SCHORBAHN	INDEPENDENCE	53.61
280177	BERNARD CARLEY	RICHLAND CENTER	52.59
280646	DAVE NINNEMANN	ST. CROIX FALLS	50.64
280274	JERRY NIEMUTH	RHINELANDER	49.35
280140	CAL PITEL	GREENVILLE	47.02
280096	NORM BECKIUS	BELOIT	44.28
280145	ED HACK	WAUSAU	41.66
280157	BRUCE MCLINN	CLINTON	41.61

**CLASS B ELDERS-Sunday, Sept. 4th - 9:00 am**

280510	DICK POFF	BELOIT	39.45
280190	KEN DAVISON	WILD ROSE	38.80
280097	JERRY SCHROEDER	OXFORD	38.53
280627	RUDY VAN FLEET	COLUMBUS	37.83
280606	AL HOLLOWAY	WISCONSIN DELLS	36.70
280716	JOHN DOLEZEL	EAU CLAIRE	34.00
280735	JOHN BRUGGER	PLATTEVILLE	33.17
280113	TONY SCRIMA	WAUKESHA	32.47

**CLASS C ELDERS-Saturday, Sept. 3rd - 4:00 pm**

280099	ROGER ANDERSON	JANESVILLE	31.89
280033	BOB COLE	PORTERFIELD	30.80
280123	DENNIS WEGNER	BUTTERNUT	29.35
280002	JOHN SECORD	FOND DU LAC	28.86
280160	RON RAMQUIST	HIXTON	27.80
280297	GARY BLOEDORN	N FOND DU LAC	10.80



**94th Wisconsin State Horseshoe Tournament**  
**Mosinee Rec. Center - 701 11th Street - Mosinee, WI • September 3rd - September 4th, 2016**

**CHAMPIONSHIP MEN-Sunday, Sept. 4th - 2:00 pm**

280017	RANDY REIN	MOSINEE	DC 55.91
280630	KEN HEINRITZ	COLEGATE	58.99
280324	LONNY TRANGSRUD	EAU CLAIRE	58.08
280451	TORY JESKE	FREDERIC	54.07
280449	DEAN CHAFFEE	CHIPPEWA FALLS	53.45
280758	JOHN MEYER	FOND DU LAC	53.28
	WINNER OF CLASS A MEN		
	HIGH % OF CLASS A MEN		

**CLASS A MEN-Saturday, Sept. 3rd - 12:00 pm**

280426	NICK MULLER	CUBA CITY	53.03
280054	MARK MAUTHE	PLATTEVILLE	47.62
280026	JEFF GUSTAFSON	BURLINGTON	47.21
280102	RICH BROCKWAY	HOLMEN	46.78
280525	JEFF MAUTHE	PLATTEVILLE	45.12
280717	CLIFF ERICKSON	EAGLE RIVER	43.95
280391	LES KARPIEL	CHETEK	43.11
280012	JASON VILLWOCK	STEVENS POINT	42.16

**CLASS B MEN- Sunday, Sept. 4th - 9:00 am**

280661	RAY GROSKINSKY	FRIENDSHIP	41.10
280328	JOE MCCROSSEN	NEKOOSA	41.02
280125	KEVIN PETERSON	WATERFORD	39.89
280304	MARK RICE	WAUPACA	36.95
280397	BOB KALLSTROM	ARKANSAW	36.28
280058	RICK WELLER	BARABOO	35.73
280044	RANDY WHITE	BROOKLYN	35.37
280169	SEAN ANDERSON	MEDFORD	34.16

**CLASS C MEN-Saturday, Sept. 3rd - 8:00 am**

280255	DAVID VOLZ	WONEWOC	34.13
280424	JARROD BISCH	BARABOO	34.11
280223	MARK ANDERSON	BALSAM LAKE	33.42
280713	KERRY MORRIS	WATERTOWN	33.29
280172	JAY JOCHIMSEN	MEDFORD	33.00
280734	GARY WEGNER	BUTTERNUT	32.37
280225	RUSS BROCKWAY	SENECA	32.29
280146	DAVE TORREY	AMHERST	32.29

# 94th Wisconsin State Horseshoe Tournament

Mosinee Rec. Center - 701 11th Street - Mosinee, WI • September 3rd - September 4th, 2016

## CLASS D MEN-Saturday, Sept. 3rd - 12:00 pm

280358	MICHAEL BENZING JR	EAGLE RIVER	31.93
280137	TOM ENDLER	TWIN LAKES	31.19
280248	DUSTIN DUERR	MEDFORD	31.07
280262	RUSS HEINRITZ	WAUKESHA	30.86
280014	DAVE QUAID	BURLINGTON	30.80
280254	JERREMY WEGNER	BUTTERNUT	30.09
280095	RANDY MITCHELL	SCHOFIELD	29.89
280132	JAMES WICKLANDER	WISCONSIN RAPIDS	29.25

## CLASS E MEN-Saturday, Sept. 3rd - 8:00 am

280205	GARY VOLZ	DEFOREST	28.82
280005	TERRY STERNBERG	RICHFIELD	28.65
280038	JOEL RAMSDELL	PELL LAKE	28.24
280181	KURT JOCHIMSEN	STRATFORD	28.16
280239	TIM SHEEHAN	EAU CLAIRE	27.82
280375	JOHN DREXLER	MARSHFIELD	27.81
280052	RAY CAYER	STEVENS POINT	27.40
280183	KEVIN BREKKE	EDGERTON	26.75

## CLASS F MEN-Saturday, Sept. 3rd - 12:00 pm

280415	RALPH MARTHALER	MEDFORD	26.69
280335	DAN NEWKIRK	BELOIT	26.55
280406	CRAIG DAVID	MARSHFIELD	25.26
280195	EDDIE WISNIEWSKI	MERRILL	23.86
280231	DAN SHEEHAN	EAU CLAIRE	23.33
280242	EVAN SCHOOLS	WAUPACA	23.21
280303	CHUCK WAGNER	EDGERTON	22.58
280076	TOM STEINKE	EAGLE	22.03

## CLASS G MEN-Saturday, Sept. 3rd - 8:00 am

280100	BRIAN HERBST	BELOIT	22.00
280081	GREG BERGLES	UNION GROVE	21.89
280287	CARL LAWVER	BUTTERNUT	21.44
280359	TRENT BRATLAND	WAUSAU	20.94
280091	GENE FRIEDE	STOUGHTON	20.15
280036	FRED LANE	STEVENS POINT	19.86
280072	BRIAN HARTMAN	STEVENS POINT	18.26
280227	KENT FRAILING	MOSINEE	17.74



**94th Wisconsin State Horseshoe Tournament****Mosinee Rec. Center - 701 11th Street - Mosinee, WI • September 3rd - September 4th, 2016****CLASS H MEN-Sunday, Sept. 4th - 9:00 am**

280307	JOHN SWEENEY	MILTON	17.55
280037	RICHARD CONRAD	PEWAUKEE	17.39
280197	RORY BALZ	WAUSAU	15.22
280107	DAVID PALMERSHIEM	FRANKSVILLE	14.78
280043	KEVIN AARSTAD	JANESVILLE	14.67
280221	MIKE SHEEHAN	ALTOONA	7.52
280333	STEVE MENGELT	BELOIT	5.52

**CHAMPIONSHIP WOMEN-Sunday, Sept. 4th - 2:00 pm**

280268	ALEENA LEPAK	EDGAR	DC 52.83
280078	PENNY STEINKE	WAUKESHA	68.28
280466	CINDY CASTELLANO	MILLTOWN	46.97
280480	TONI SLOPER	MILLTOWN	45.92
	WINNER OF CLASS A WOMEN		
	HIGH % OF CLASS A WOMEN		

**CLASS A WOMEN-Saturday, Sept. 3rd-12:00 pm**

280004	JANE SMITH	BALSAM LAKE	40.82
280266	GLENDA LAWVER	BUTTERNUT	37.25
280346	LAURIE DOLEZEL	EAU CLAIRE	33.07
280228	TONYA KAULUM	EAGLE RIVER	31.81
280253	TAVA KILDAHL	STRATFORD	30.72
280408	KARI DAVID	MARSHFIELD	29.03
280018	DOBIE GUTWEILER	SUN PRAIRE	28.67
280773	RONDI MENGELT	BELOIT	28.13

**CLASS B WOMEN-Sunday, Sept. 4th-9:00 am**

280206	ELAINE TROULLIER	WHITELAW	28.09
280194	SANDRA BALZ	WAUSAU	27.18
280154	HEATHER SOWATZKE	WISCONSIN RAPIDS	26.75
280147	JENNIFER WEGNER	BUTTERNUT	26.52
280278	TRICIA PENNOYER	DOUSMAN	23.97
280105	GLORIA SMITH	MILLTOWN	22.29
280199	LISA WHITE	BROOKLYN	22.23
280013	CECELIA TROSSEN	MOUNTAIN	22.01

**CLASS C WOMEN-Saturday, Sept. 3rd - 4:00 pm**

280270	LORI LAZARIS	COLGATE	20.66
280093	MARY THOMPSON	JANESVILLE	17.66
280349	TAMMY NEWKIRK	BELOIT	13.51
280191	BARB RAMQUIST	HIXTON	11.01
280042	MONA LANE	STEVENS POINT	9.20
280101	NANCY JOHNSON	BELOIT	8.83

# 94th Wisconsin State Horseshoe Tournament

Mosinee Rec. Center - 701 11th Street - Mosinee, WI • September 3rd - September 4th, 2016

## CADET GIRLS CHAMPIONSHIP-Saturday, Sept. 3rd - 4:00 pm

280216	SARAH CHAFFEE	CHIPPEWA FALLS	DC 57.80
280523	BROOKE LAZARIS	COLGATE	42.41
280267	KRYSTAL LAZARIS	COLGATE	13.56
280115	LILLYAN KILDAHL	STRATFORD	5.35
280090	ELLA VOLZ	DEFOREST	2.00
280299	ELIZA VOLZ	DEFOREST	2.00

## CADET BOYS CHAMPIONSHIP-Saturday, Sept. 3rd - 4:00 pm

280271	BRANDON BENZING	EAGLE RIVER	14.15
280425	KANE KUESTER	JACKSON	10.24
280127	BLAKE BENZING	EAGLE RIVER	6.10
280210	CARTER POPPE	HUDSON	2.87
280226	BRADLEY BENZING	EAGLE RIVER	2.61
280156	JEDIDIAH SOWATZKE	WISCONSIN RAPIDS	2.00
280362	TREVOR FORST	MARSHFIELD	1.00
280305	CONNOR KILDAHL	STRATFORD	0.05

## JUNIOR BOYS CHAMPIONSHIP-Sunday, Sept. 4th - 2:00 pm

280371	GUNNAR DAVID	MARSHFIELD	DC 58.44
280237	BLAKE LAZARIS	COLGATE	36.17
280144	MASON BISCH	BARABOO	34.13
280064	ISAAC WEGNER	BUTTERNUT	27.05
280597	STEVEN LAZARIS	COLGATE	21.92
280220	COLE TRANGSRUD	EAU CLAIRE	16.13
280260	NICHOLAS PRASALOWICZ	ADAMS	16.07
280302	GABE BURGIN	PLATTEVILLE	12.50

## JUNIOR GIRLS CHAMPIONSHIP-Saturday, Sept. 3rd - 4:00 pm

280261	EMILY LAZARIS	COLGATE	30.22
280592	CHRISTINA HEINRITZ	PEWAUKEE	24.10
280249	CAILYN TRANGSRUD	EAU CLAIRE	18.00
280296	LAUREN COOK	MARSHFIELD	5.00
280298	BECCA BISCH	BARABOO	0.80



RESTAURANT

# Two's Company

AND LOUNGE

213 Main Street • Mosinee, WI 54455

**715-693-3090**

*Good Luck to all Horseshoe Pitchers!*

**10% off with coupon**

Excludes any other offer.



## **Serving Breakfast**

Saturday & Sunday

7am to 12 pm

## **Full Menu**

11am to Close

*Serving Traditional Wisconsin Fish Fry*

## **Daily Specials**

Saturday: Mouthwatering Prime Rib

Sunday: Broasted Chicken





DODGE

Jeep



RAM

BUSINESS LINK

*You can count on us!*

# BRICKNER

SINCE 1945 *Family*

LITTLE CHICAGO — WAUSAU — ANTIGO — MERRILL —

View over 800 Vehicles at...

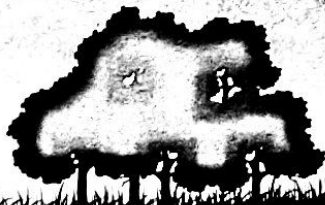
[www.bricknerfamily.com](http://www.bricknerfamily.com)

Don & Lisa Moon

# Moonlight Landing

BAR & GRILL

715-693-1900



1162 Halfmoon Lake Dr • Mosinee, WI 54455

HOURS

Mon - Wed - Thur - Fri: Open at 11am  
Sat: Open at 9am • Sun: Open at 8am

Closed Tuesdays

Stop By &  
Say "Hi!"



Located at **1718 Old Hwy 51**  
*Between Rothschild & Mosinee*

**Regulation Pits in the Back**  
Food Served All Day & Friday Fish Frys



## Quality Inn

### Central Wisconsin Airport

Get more value at the pet-friendly and smoke-free Quality Inn<sup>®</sup> Central Wisconsin Airport hotel in Mosinee, WI, which offers airport transportation, free Internet, and free hot breakfast!

400 Orbiting Dr, Mosinee WI, 54455  
(715) 693-9000

**Host Motel**





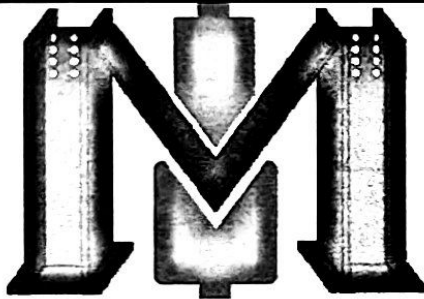
# MARTIN'S AUTO REPAIR



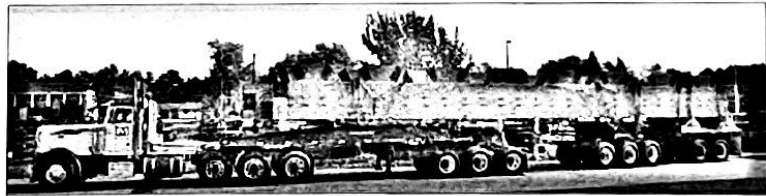
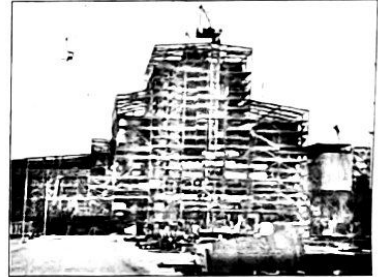
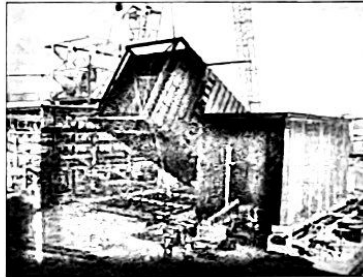
Service for All Makes & Models  
Owners  
Thomas Martin & Chad Kaufman

498 Brown Street  
Mosinee, WI  
**715-693-3613**  
marepair@mtc.net

*"The Tire Experts"*



Merrill Iron & Steel, Inc.  
Locations in Schofield, Wisconsin  
and Springfield, Missouri



**Proud sponsors of the 2016 Wisconsin State Horseshoe Tournament**

For employment opportunities see [www.merrilliron.com](http://www.merrilliron.com) or call 715-355-8924 and ask for Brooke Stankowski

*Our purpose is to produce and deliver superior products. Our goal is to continuously improve.*

# NEWTON ELECTRIC CORP.

220 N 3rd Avenue, Wausau

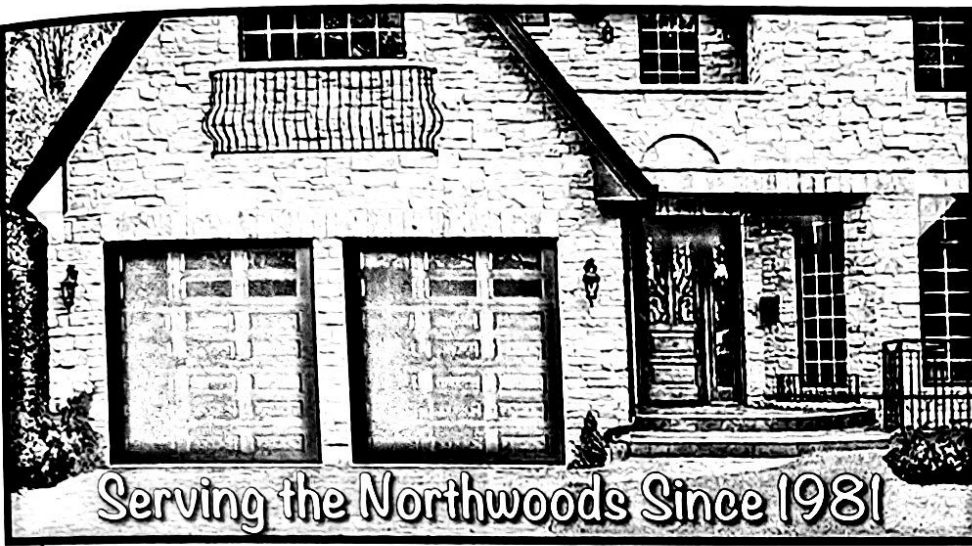
Phone: 715-845-6201 Fax: 715-842-4923

Email: [newtonelec@newtonelec.com](mailto:newtonelec@newtonelec.com)

Website: [www.newtonelectriccorp.com](http://www.newtonelectriccorp.com)

Tom Newton • Mike Newton • Cheryl Falkowski

**"THE AREA'S PREFERRED ELECTRICAL CONTRACTOR"**



better choice .....

better brands.

At *Lakeland Overhead Door*, we believe that homes are enhanced by the beauty of a custom matched garage door. That's why we offer hundreds of designs in wood, fiberglass, and steel. Let us help you select the perfect garage door and garage door opener for you home today.



4925 Coye Dr, Suite C • Stevens Point, WI 54481  
800-333-6668 • [www.lakelanddoor.com](http://www.lakelanddoor.com)

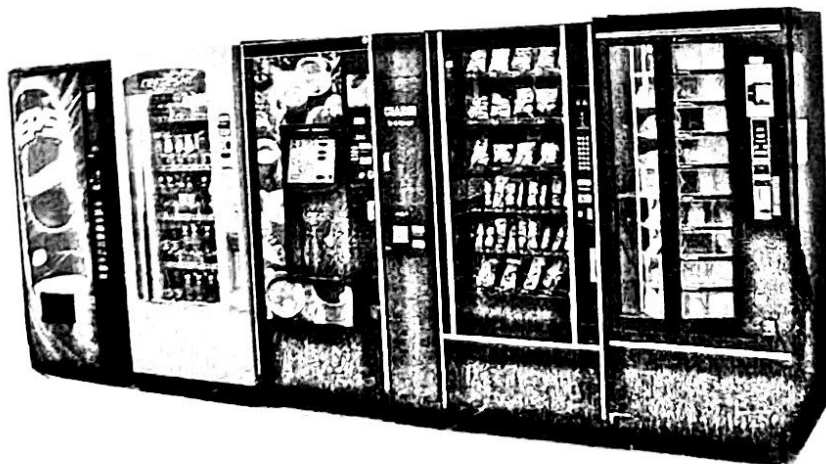


*"Your Local Full Service Vendor"*

DAVE MARG

-Owner-

**715-551-2228**





Proud to support the  
WI State Horseshoe  
Tournament.



**Peoples**  
STATE BANK

888.929.9902 | [www.bankpeoples.com](http://www.bankpeoples.com)

*Always see the Potential.*

Member FDIC



Est. 1985

## LIETZ'S SHELL SERVICE INC.

1123 WESTERN AVE.

MOSINEE, WI 54455

PHONE: 715-693-3112

**JOHN LEITZ, PRESIDENT**

COMPLETE AUTO SERVICE



Zebro Realty, LLC  
**Karen Zebro**

Broker / Owner

133 Badger Rd. - Mosinee, WI 54455

Office: 715-693-7653 (sold)

Cell: 715-574-5268

Fax: 715-693-7652



[www.zebroreality.com](http://www.zebroreality.com) ♦ [karen@zebroreality.com](mailto:karen@zebroreality.com)



## **Bob's Catering**

COMPLETE CATERING  
FOR ALL OCCASIONS

*Home Cooking is our Specialty*

Phone: 715-446-3574 • Fax: 715-446-2226

[www.bobscatering.net](http://www.bobscatering.net)  
[fireballbob327@aol.com](mailto:fireballbob327@aol.com)



# R&R Landscaping, LLC

## Randy Rein, Owner

201 2nd Street  
Mosinee, WI 54455  
(715) 693-1199  
(715) 573-6891

- New Lawns
- Grass Cutting
- Brush Hog Cutting
- Rotor Tilling
- Tree Trimming
- Tree Cutting
- Lot Clearing
- Snow Plowing
- Compost
- Wood Chips
- Firewood
- Stump Grinding

*Reasonable Prices*  
*Free Estimates • Insured*

*1st Place*  
*Trophy & Engraving*  
715-845-3580  
1720 N. 3rd Street Wausau, WI 54403  
sales@1stplacetrophy.com  
www.1stplacetrophy.com

---

**CREATIVE  
CONCEPTS**  
LLC

---

**Full Service  
Interior and Exterior  
Contractor**

**715-574-1459**

**Kent Frailing  
Fully Insured • Free Estimates**



**AVON**  
Representative

Karen Biedermann

209 Willow St  
Mosinee, WI 54455  
(715) 581.6916  
karen.biedermann@yahoo.com  
www.youravon.com/kbiedermann



1105 Western Ave  
Mosinee, WI 54455  
(715) 693-3400

Local loan decisions,  
free checking, and  
unmatched service. Stop in  
and discover why we say  
**Membership Matters!**

Now offering **FREE ATMs!**

Offices in Kronenwetter, Marshfield,  
Wausau, Wisconsin Rapids  
and Stevens Point too.  
[www.valleycommunities.org](http://www.valleycommunities.org)  
Find us on Facebook!

Federally insured by NCUA  
Equal housing opportunity.

# HOLIDAY WHOLESALE

225 Pioneer Drive  
PO Box 177  
Wisconsin Dells WI 53965  
[www.holidaywholesale.com](http://www.holidaywholesale.com)

**Joe Lambert**  
Regional Sales Manager

Green Bay, WI  
Email: [joel@holidaywholesale.net](mailto:joel@holidaywholesale.net)  
Business Phone: 800-333-8321 Ext. 273  
Cell Phone: (920) 422-2469

Year, after year, after year...

# VOTED BEST. RATED BEST.

**VOTED BEST  
PERSONAL  
INJURY LAWYER**  
5 YEARS  
IN A ROW

TELL THEM YOU MEAN BUSINESS!



Wausau | Milwaukee | Madison | Appleton | Green Bay | Illinois | Iowa

**Hupya and Abraham** s.c.  
personal injury lawyers

800.800.5678 | [hupy.com](http://hupy.com)

LEACH EYE CARE

DR. KATHI L. LEACH

Optometrist

412 Third Street  
Mosinee, WI 54455  
715-693-2400 • Fax 715-693-4699



*"A Smile Is A Valuable Resource"*

**James J. Michna, D.D.S.**  
1006 Western Avenue  
Mosinee, WI 54455  
(715) 693-4777

# MINNOW'S PLUMBING

**Keith Kazmierczak**

New Homes & Light Commercial • Repairs & Remodeling  
MP224041

407 Pinewood Ct.  
Mosinee, WI 54455

**715-692-1112**



**Bob Patel**  
General Manager

904 Industrial Park Ave  
Rothschild, WI 54474  
Phone: 715.355.3030  
Fax: 715.355.4770

Email: [m64508bo@motel6.com](mailto:m64508bo@motel6.com)



**SIPPL CHIROPRACTIC CLINIC**  
Complete Chiropractic Care

**DR. SHAWN P. SIPPL**  
Chiropractor

1021 Suite C, Western Avenue  
Mosinee, WI 54455

715-693-7477

[shawn@drsippl.com](mailto:shawn@drsippl.com)

[DRSIPPL.COM](http://DRSIPPL.COM)

# TED RUTH MASONRY

• Brick • Block • Stone  
• Cultured Stone  
• Small Pours  
**297-6302**



## DRIVE-IN SERVICE



DODGE



GMC

Dodge, Ford, and GM Pickup Trucks are our Specialty.



Cummins Mid-Range



A NAVISTAR COMPANY

Navistar Mid-Range  
444, 466, 530

We have the Special Tools, Scantools, and Experienced Technicians to repair your vehicles, including Foreign Trucks

## PERFORMANCE PRODUCTS



- Transmission Rebuilding
- Transmission Upgrades
- Exhaust Brakes
- 4" & 5" Stainless Exhaust
- Programmers and Performance Modules
- High Flow Air Filters
- RV Performance
- Dynamometer Testing
- Check HP & Torque
- Diagnostics
- Speedometer checks

For Excellent Quality and Service  
Call K&S Fuel Injection, Inc.

Agriculture Industrial Trucking  
WE KNOW DIESELS

1-800-535-0172

K&S Fuel Injection, Inc. phone 715-359-0434  
6007 Municipal Street fax 715-359-4144  
Schofield, WI 54476 www.ksfuel.com

# K&S FUEL INJECTION, INC.

## Product Lines



Cummins Mid-Range Engine Dealer for Parts & Service. Also complete Engines; New or Reman. Backed by Cummins Nationwide Warranty. We employ Cummins Trained and Certified Technicians to Repair or Rebuild your Engine.



**ALLIANT POWER** Best on the Market  
Dealer for Ford PowerStroke and Navistar HEUI Injectors and Specialty Parts.  
NEW - NOT REMAN.

## DIESEL FUEL SYSTEMS



STANADYNE



Full Diesel Rebuild Center since 1977. Rebuilt Exchange units or repair and return your Injection Pump, Injectors, or Turbo.

## TURBOCHARGERS

BorgWarner  
Turbo Systems

Garrett  
Schwitzer

HOLSET  
TURBOCHARGERS

Rebuild or Exchange - All Makes and Models

## ON-SITE SERVICE AVAILABLE

Fully Loaded Service Truck to make Timely On-Site Repairs.



We don't judge.  
We insure.

**WE ARE FARMERS**

CALL ME FOR A FREE QUOTE!

**715.298.1785**

MICHAEL HALLINAN INS AGENCY INC  
MHALLINAN@FARMERSAGENCY.COM



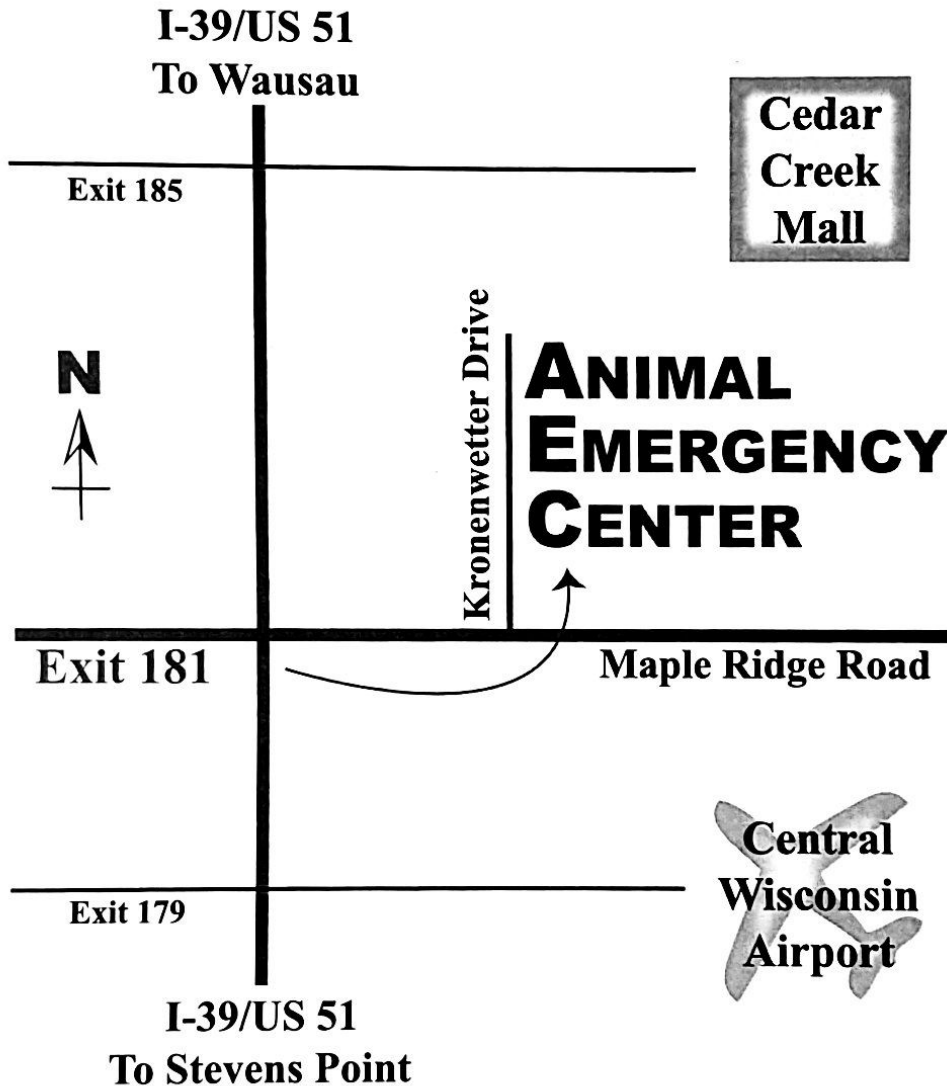
**FARMERS**  
INSURANCE



# ANIMAL EMERGENCY CENTER

## PAW HEALTH NETWORK, INC.

WALK-INS • EMERGENCIES • NIGHTS • WEEKENDS • HOLIDAYS



**OFF OF I-39/US 51**  
**TAKE EXIT #181**  
**EAST ON MAPLE RIDGE ROAD**  
**NORTH ON KRONENWETTER DRIVE**

**(715) 693.6934**

**(866) 602.0839**

**1420 KRONENWETTER DRIVE, MOSINEE WI 54455**



**Open at 6 am**  
**EVERYDAY for BREAKFAST**



## **SPECIALS**

**FRIDAY - 11:30am - 9pm**

Fish Fry Specials

Surf & Turf

Jumbo Shrimp

**SUNDAY - 12pm - 6pm**

Chicken Dinner

**SATURDAY - 4pm - 8pm**

Prime Rib

Ribeye

Surf & Turf

Chicken Dinner

**715-693-7222**

**HOMEMADE PIZZAS**  
**FRESH 1/2 POUND BURGERS & MORE**

**Proud to serve the  
Greater Mosinee Area since 1957**



**Rentals • Hardware • Tools • Appliances  
Power Equipment • Paint • Seasonal Greenhouse**



**f Find us on  
Facebook**

**"Cause you got work to do"**

**FULL SERVICE  
and SALES  
on Major Appliances  
and Power Equipment**

**715-693-2630**

504 West State Highway 153 • Mosinee WI

**www.charlieshardware.com**



## **Dr. Willy Bouton DDS**

*Mosinee Family Dental@charterinternet.com*

**435 Orbiting Drive, Suite A  
Mosinee, WI 54455**

**Office: (715) 693-4530**

**Fax: (715) 693-4531**



# *Autograph Page*