

## WORLD CHAMPS MEET IN TEAM WORLD

NHPA SANCTION #16-88-001

Sandy McLachlin vs. Dale Lipovsky? The Womens World Champion vs. the Mens World Champion? It could happen right here at the Pitchin' Palace.

Yes, it's speculative, but when Minnesota and Canada team captains flip a shoe to chose match-ups at the up coming Team World tournament, the one-on-one that everybody wants to anticipate is McLachlin against Lipovsky.

The horseshoe world is coming to the Pitchin' Palace, February 12, 13, & 14. The dates of the former Can-Am are now assigned to the newly named Team World Tournament. Tom Roanhouse, owner-promoter, has invited states to sponsor four person teams to compete for the Team World title and up to \$2000 prize money.

Minnesota, last years winner, with Phyllis Negaard and World Champion, Dale Lipovsky, looks like the team to beat. Undoubtedly other teams have other ideas. Cliff Baker and Charley Webb of Illinois are coming to win. Missouri's Charley Kilgore and the prospect of Allen Francis become a new threat. Indiana with two teams is always in the finals. Iowan Joe Dolter, has entered three teams. It would appear they wish to dominate through cheerleading. WHPA President, Dick Hansen, has recruited the Wisconsin team. And then we have Miss Sweetness, the seventeen year young lady turned Champion. Sandy McLachlin will be the odds-on favorite to win all of her games. With support, Canada will be in the finals.

Traditionally all teams pitch Sunday morning to complete the preliminaries and decide the order of the finals--a ladder finish of the final four.

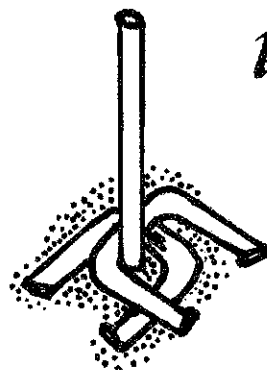
Winning is fun and sometimes losing is not so bad either. This is one of those times. Just consider the number of entries from the same state. "FUN" team entries are: the Illinois #2 team by Don Peters, a 2nd Wisconsin team, the team from the Pitchin' Palace and the "B" teams already mentioned from Indiana and Iowa.

Pitching for Wisconsin will be: Jane, State Champ, Smith, Rick Pritzlaff, John Udelhofen, Ralph Maylahn and others. Pitchin' Palace members will be; Gerri Meistad, Lloyd Johnson, Grant Hintz and Dick Hansen.

There is still a chance for team entries from Montana, Oklahoma, Colorado and Ohio.

Will the big game hapen? Will Lipovsky be up to it? He won his title at Eau Claire pitching in the lower 80% bracket. McLachlin set a record averaging over 88%. Minnesota may concede one point to Canada by offering their #4 pitcher to McLachlin and hope to win the other three points. But if Canada wins the flip.....

These pitchers are going to have a ball. If you want to share in the fun, help bounce the ball, keep score, whatever, the dates are February 12, 13 & 14.



*Pitchin' Palace*



## HOPING FOR BETTER THINGS in 1988

Greg Reier's tournament results have been something special. The usual numbers and names were accompanied with his entertaining reflections called "The Hi-Lites." It has been evident that here was a product of a dedicated tournament director, a devotee to the sport of horseshoes who enjoyed his work.

Last winter, Reier, in conjunction with municipal officials, was instrumental in improving the fairground courts and was looking forward with renewed interest to Tobacco Days, Edgerton's July tournament.

The tournament was billed as a pre-world warm-up and drew a whopping one-hundred and forty-six pitchers. Later Reier admitted that too many entries created, in part, a mess that turned his mood from Hi-Lites to Low-Lites.

### 1987 TOBACCO DAY LOW-LITES BY GREG REIERSON (A PARTIAL REPRODUCTION)

This tournament will not be run (by us) this way again. There are too many problems resting on too few shoulders without the advantages of club affiliation and/or sponsorship. It is too much to ask of 8 or 10 people to carry 90% of the workload for a tournament of this size and popularity.

#### THEREFORE

Also, since we have no club to help us we refuse to put the same old "crew" through another year of forced scorekeeping. It is too much to ask of a few wonderful friends to make such a sacrifice and not worth the strain on our relationships with them. If we get no sponsorship and have to meet all expenses ourselves again, one thing will happen and one thing may happen. Entries will be raised enough to be able to pay scorekeepers \$1.00 per game--no more hats.

So, Mr. Gloom & Doom has spoken. Tobacco Days 1987 was something which we never want to, or will ever experience again. If anyone has ideas or suggestions---please speak up. I hate to see horseshoes get

to be so expensive, but let's face it, folks---trophies cost money and someone has to keep scores; and no one can expect to keep people interested in it anymore for 50¢ a game. Call it inflation, call it excessive, call it what you will; but just consider the alternatives---keep your own or no tournament at all. Funny how it all boils down to the scorekeepers who can make or break a successful tournament like Tobacco Days, isn't it? Maybe that should tell us something. Could just be that the players may not be the most important factor after all.

### 1987 JANESVILLE MOOSE UNTITLED ANNOUNCEMENT BY GREG REIERSON (A PARTIAL REPRODUCTION)

As some of you already know, this was the last Reier--run horseshoe tournament. Even without the personal reasons we have for getting out, the problems encountered here and with Tobacco Days this year would have put us out anyway. It's beyond most people's comprehension what kind of work and dedication it takes to run these things. I wish everyone who enters a tournament could have the privilege of handling one just once. I bet the grumbling and dissatisfaction, for everything from the rain to the heat, the cool to the wind, the trophies to the money, the classes to the daylight, would be reduced significantly. You can't please them all---why try?

We'll miss most of you (though some we'll live without), and will always be grateful for having the opportunity to meet many new friends through our association with horseshoes. If there are compliments--great; if there are complaints--tough; if you don't give a hoot--neither do we. We did have many good times sharing summer weekends with you, and we did our best.

Thanks to all who gave us a hand scorekeeping; to Stirling again for the shelter; to Jerry Schroeder for cleaning up the grounds so well before we started, and to anyone in general who lent a hand with anything. Special thanks to Bun and Shirley Carley for their generous donation to the Ladies classes. Also, to all the good folks who braved the elements and pitched in the rain Sunday morning.

**WI NHPA SANCTION TOURNAMENTS CONT'D**

He has effectively pointed out, there is a way to fulfill the requirements and still accomodate a non-member.

You and your club can pick it up from there. There is no fee to sanction a tournament. The tournament champion and class champion patches are provided by the NHPA. This year most of your regular entrants will be NHPA members. There, you have three good reasons to contact Jim Haupt or Jane Smith who will be more than happy to give you an NHPA sanction number. It is only fair that the sanction label should be listed on the state schedule. This demands your immediate attention. All NHPA SANCTION TOURNAMENTS CAN BE PUBLISHED IN THE NATIONAL DIGEST.

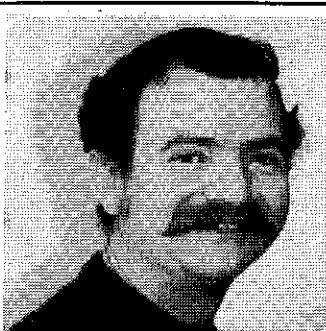
**THE NHPA**

The NHPA is not for everybody. It's not for bowlers. It's not for hunters. It's not for retired people. They all have their own organizations. If the NHPA is for horse-shoe pitchers, then all pitchers who would like to see their game continue to flourish, should be active members. If you have a warm spot in your heart for pitchin' shoes you should be an NHPA pitcher.

Backyards pitchers looking for more competition soon find a league or a club to join. Somewhere along the line you will find the influence of the NHPA; maybe in the rules that the league uses and follows. Chances are the organization setup of the club is bases on the pattern suggested by the NHPA. Surely the State Association does its business within the scope of the NHPA guidelines. We insist on it! That's your league, your State Association and your club using NHPA guidelines. Behold, it is also your NHPA.

This past year our state boasted a record number of NHPA members because of the Eau Claire World Tournament. Hopefully a majority of those card holders will see the light and renew their membership for 1988. NHPA membership is not just a fee for the World. It is the opportunity to demonstrate your interest in this sport. It

is the proof that you care and are willing to share your part of the load. Wear your NHPA insignia as your claim to the horseshoe world that you are not just on a free ride.

**DICK HANSEN****WHPA****PRESIDENT**

Hope all of our WHPA members had a safe holiday season. I will be looking forward to seeing all of you horseshoe pitchers this coming year.

In the past month I have received letters from the NHPA President, Dave Loucks, in regards to the new insurance policy. At the NHPA convention 1987 in Eau Claire, 90% of the membership voted for the NHPA to seek out an insurance company to provide liability coverage.

This is part of a letter from Dave Loucks.

"The NHPA will carry a \$1,000,000 per occurrence Spectator Liability Policy. The cost per member is \$2.00 for the year and must be paid by every NHPA member including juniors. It will offer protection during Sanctioned Tournaments, Sanctioned Club and League Programs and, weekly play of NHPA members during organized club activities."

So add \$2.00 to your NHPA membership dues when you send it in to John Secord.

Our charter will receive a Certificate of Insurance and at that time I will have more details of the policy. I should have it by the Spring meeting.

**HOPING FOR BETTER THINGS IN 1988 CONT'D**

Believe it or not, this is relief speaking, not sour grapes. We're just glad we finally got through 1987. Good luck to you all in 1988.

Greg and Mona

**LETTERS**

Received the Horseshoe Newsletter and the extra nice pictures, thanks a million. The five dollar bill is for to extend my subscription to the Horseshoe Newsletter.

I'd also like to say that after not being able to participate in tournament horseshoe pitching since 1983--that this special class that they had for us older guys who can't throw 40 feet--realy was appreciated by me.

See you at the Spring meeting.

Bob Wilke, Berlin

I found 6 new subscribers for the Wisconsin Horseshoe Newsletter. I'm also sending my renewal money.

If possible could you send them a copy of your last issue.

Thank You,

Tony Scrima, Waukesha

Editors Note: Thank you Tony, for your support.

Would you please print this for the benefit of all us pitchers who are not class "A"?

How come it is that tournament people think they have to have a bigger class "A"? They are using half the class as cannon-fodder. Some of us "B" & "C" guys pay the price two times--once with the added entry, and again when we have to pitch against a real "A" man. Do you T.D.'s think we like to pitch on their iron? Or does our entry fee just make their purse that much heavier. Especially small tournaments should have a smaller class "A". They don't have to play a bunch of "B" and "C" guys to be showcased. They can pitch their own double round robin.

Jim Haupt, Milwaukee

**IN MEMORIAM**

Bill Austreng, a charter member of the Goldendale Horseshoe Club, passed away mid-December. As league secretary, tournament scorekeeper, and enthusiastic club worker his absence will create some voids. The Goldendale Contributors plaque he received should be embellished with oak leaf clusters. Many Wisconsin pitchers carry their shoes in an expertly constructed Austreng box. Making boxes was a labor of love which Bill compounded by paying to advertise, saying, "we have to keep the Newsletter going too."

Thanks Bill, it was good to know you.

**TOM AND LINDA LEHNER  
IN LOVELAND**

At our first glance at the Colorado result list, as it appeared in the "Digest", we saw the familar name of TOM LEHNER in the pole position for class B in their State Tournament. Was this the same TOM LEHNER we knew from the Palace? He went 6-5 with 46.5%. Wait a minute. What kind of class can you win with 6 and 5? Well actually he finished 5th but was, in all probability, listed first because he was seeded first. He must be pitchin' good shoes to be seeded #13 in the state of Colorado.

According to the November issue of "DOUBLE RINGER", a western states publication, Tom Lehner was elected vice president and Linda Lehner elected secretary of the Loveland Horseshoe Club. They both pitch in an indoor, mixed, (but scrambled) doubles league. Apparently he has found it! First he switched from flip to one-and a quarter and now he's got Linda in the club.

**DEADEYE HORSESHOES  
NOW**

Clydesdale model "DEADEYE" Horseshoe. Drop Forged

Susie Pritzlaff  
W204 N11912 Goldendale Rd.  
Germantown, WI 53022  
Ph. 414-628-1484

Bill Courtwright  
P.O. Box 742  
Fenton, MD 63026  
Ph. 314-677-2200

## Walter Ray Williams Jr.

If you watched bowling Saturday, January 2nd on ABC, you saw hundreds of thousands of dollars worth of publicity for horseshoes. Walter Ray Williams Jr., Stockton, CA, three time World Junior Champion and four time World Champion in horseshoes, five time Bowling Titleist on the Pro Bowlers Tour was seeded second for the Alameda, CA Open Bowling Tournament. Before he met his opponent. Walter Ray was featured in a "Up Close and Personal" segment on his other sport, HORSESHOES.

In October of last year, ABC went to San Jose, CA to film and interview Walter Ray at his own invitational horseshoe tournament. In the segment on how he got started in horseshoes, Walter Ray said, "I started playing horseshoes when I was 9 and it was kind of a family thing that our family did and when I finally learned the game, I went out and practiced very hard and within a year I was one of the top junior players in the world finishing 2nd when I was 10."

On the similarities of the sport that are to his advantage, Williams said, "The pendulum arm swing, eye and hand coordination, I needed in both sports. The accuracy, obviously, I think, is one of the reasons I became a good bowler from pitching horseshoes. I think they compliment each other and is one reason I'm able to play both games without playing excessively. I don't practice a whole lot at horseshoes or bowling, but I play enough just basicly to keep me in touch and play halfway decent."

Long after Walter Ray leaves the Professional Bowlers Tour, he envisions himself still in competition in horseshoes. Walter Ray went on to say, "The average age of a horseshoe player is probably in his mid forties almost fifty years of age. This year I finished 5th in the World Tournament and a gentleman that was 69, finished 6th, so I figure I got another 40 years, (laughs), hopefully."

Walter Ray lost his match to Mike Jasnau 201-235, earning \$7000. He has made the TV finals for bowling 17 times since 1983

and each time HORSESHOES is mentioned, giving our sport the best exposure we ever had. Walter Ray was "BOWLER OF THE YEAR" for 1986, had an excellent year in 1987, with two Bowling Championships. To make the TV finals for the first stop on the Winter Tour is a great start for 1988. We wish him the best for this new year!

## HORSESHOES AND NAMES

Following horseshoes is more than just pitching. It's reading schedules, receiving result sheets, meeting people, trying to remember names, and more names. Here are some names you will see fighting to be recognized. BRIAN REPINSKI Plover--on the move; will be a consistent "A" soon. RANDY REIN, Mosinee--new to "A"; has the necessary desire to stay there. RON BUTZ, Fond du Lac--ready to take the top spot in his area. Needs to enter more contests. MARK KRANSKI, Custer--new to tournaments; shows promise; is a "winner". TONY SCRIMA, Waukesha--a "two year old"; has already pitched in some "A" divisions; wants to excel. DON KANGAS, Menasha, A U.P. transplant; three months after his first Wisconsin tournament he takes #2 at State.

PITCHIN' PALACE DEC 6 RINGERS ONLY

### "JUST FOR THE EXERCISE"

Seven and zero again for Ralph Maylahn and he will tell you he's doing it just for the exercise. Steve Wiegert, who managed a fourth with the very same percentage as the winner, says that Maylahn plays just good enough to win. When he's ahead he's hard to catch and when he's behind he can reach a little deeper to make it up.

After his class B playoff game, Tony Scrima was first in the bar announcing "Suck up everybody". Did you win?, his thirsty fans inquired. "No, but here comes the buyer now... Mike McDonald." volunteered Tony.

A, B, & C pitched at the same time using all 12 courts. Last seen, "C" was involved in a three way pitch-off.

CLASS A		CLASS B		CLASS C	
Maylahn	7-0 60.8	McDonald	6-1 45.7	Thomson	5-2 34.2
Bensinger	6-1 57.7	Scrima	6-1 50.3	Kmteclak	5-2 40.5
Hintz	4-3 59.4	Haupt	5-2 45.4	White	5-2 33.7
Wiegert	3-4 60.8	Uhl	3-4 50.8	Kent	4-3 32.5
Johnson	2-5 52.0	Brower	3-4 38.5	Meistad	3-4 30.2
Lange	2-5 50.2	Beaumont	3-4 34.7	Thomas	2-5 32.5
Hansen	2-5 50.0	Traber	2-5 39.7	Juengling	2-5 30.8
Woodworth	2-5 49.4	Schllicher	0-7 32.3	Look	2-5 22.0

# WI CLUB TEAM TOURNAMENT

NHPA SANCTION #16-88-002

DATE - SATURDAY, APRIL 9th - ALL DAY

In 1985 Goldendale Club won the first Club Team title. The home club, Pitchin' Palace, grabbed the next year. This year the defending champion is Green Bay. Can they repeat?

All the former winners and the present custodians of the traveling trophy will figure heavily in this year's contest. If Green Bay can field the same four pitchers they will be hard to beat. But Goldendale has all the guns to win it in a walk---four or five Class A pitchers. The Palace is solid and has the best "bench".

There are some other good teams but they have yet to assemble their four top pitchers or they just don't have the full compliment of four.

Past entries have included Eagle, Rosholt, Fond du Lac, and Fillmore. Most entered on guts, not much glory. Janesville continues to threaten but they will need all their best pitchers. Marshfield has been close before, could win with good luck and help. Platteville might move into contention with the right combination of people. Combined Locks has new blood; may figure in the finals.

Everybody has shared in the prize money. Each game won earns a share of the match money. But mostly it's a fun time. Flip a shoe; choose the match-ups; pitch to win for your club. The team effort ignites enthusiasm and is contagious.

Entry fee - \$16 each or \$64 per team  
 NHPA Sanctioned - send card # with entry

Contact: Jim Haupt  
 5075 N. Elkhart Ave.  
 Milwaukee4, WI 53217

DEADLINE - March 26, 1988

ENTRIES MAY BE LIMITED

## SJURSET IS BACK BUT MAYLAHN GOT HIM

The man with the funny name Sjurset (sure--set) had high percentage but Maylahn took him as he swept the class at the Hall of Fame Open recently held at the wind and weather free Pitchin' Palace. The P.P. die hards from near and far pitched in to make this a valid tournament. Poutanen and Jakels came from the North. From the West came LaVerne Edge with Norm and Len Mauthe, Iowa sent Kent McPhail. That's the good news: the bad news is only five classes were on hand for this important event. Susie Pritzlaff was honored as she hung her plaque in the Hall of Fame. As she has helped others to this plateau it is fitting that she herself should share some space with the other Wisconsin horseshoe greats.

### November 7-8 Hall of Fame Open Results

CLASS A			
Ralph Maylahn	Genesee Depot	7-9	60.3
Clint Sjurset	Elgin Ill.	6-1	63.5
CLASS B			
Grant Hintz	Batavia Ill.	6-1	57.1
Eddie Crockett	Milwaukee	5-2	49.4
CLASS C			
Len Mauthe	Platteville	8-1	47.1
Bob Jarosh	Manitowoc	7-2	47.5
CLASS D			
Bob Klavey	Illinois	6-1	44.0
Fred Zeilstra	Eagle	5-2	46.0
CLASS E			
Rudy Stark	Eagle	7-0	39.7
Donny Burmeister	Brown Deer	5-2	39.4

**"QUALITY LINES OF ALL TYPES OF SPORTSWEAR"**

Caps, T-shirts, and jackets for Horseshoe Clubs Team or individual prices-- Quantity discounts.

Your club is invited to participate in our novelty caps and T-shirts program, structured to support the Jrs. Scholarship Fund and your club.

I would like to be your full service sportswear representative. For information send S.A.S.E. to: Carl Shade, 621 E. Decorah Rd. Apt.#104, West Bend, WI., 53095 or call (414) 334-2826

" Wholesale prices to all Horseshoe Clubs "

## LETTERING

BY RENE WING :

**ARTWORK, POSTER, FLYERS,  
 Contact Susie Pritzlaff at  
 W204 N11912 Goldendale Rd.  
 Germantown, WI 53022**



# WISCONSIN NHPA SANCTIONED TOURNAMENTS

**SITUATION:**

From an official NHPA Sanction Certificate.....  
 "This sanction is based upon certification that National Rules shall be followed, legal shoes be used and all participants shall be members of their State and NHPA."

**PROBLEM:**

In Wisconsin, the feeling toward NHPA sanctioned tournaments has been mixed. Those clubs that would like the distinction of a sanction have been reluctant to impose any restrictions that may limit the number of entries. The foremost obstacle has been how to handle those valuable people, the club workers, the people who sell the hamburgers and who show up for work-day. They also want to pitch in their tournament, even if it is just once a year. They are active club members; they certainly support organized horseshoes; they merely do not elect to join the NHPA.

**SOLUTION:**

The December NHPA Digest carried these lines in DAVE'S COURT REPORT "Most state officers know about the NHPA complimentary card program. Each club can allow up to 14 non-members to pitch in tournaments for the year, one time each. THIS DOES NOT APPLY TO YOUR STATE CHAMPIONSHIP where a minimum participation in at least two prior sanctioned tournaments is recommended by the NHPA."

Those words from the NHPA President, Dave Loucks, have put aside Wisconsin's greatest deterrent to an NHPA sanctioned tournament.

CONT'D PAGE 3

## POLAR BEAR SHOES

A survivor of this years first tournament swears it's true. The guys at Eagle had a horseshoe tournament on New Years Day! And you thought all the crazies were in swimming. Maybe it was the right phase of the moon at that latitude...heard of another January 1st tournament at Waterford. Did you know that some of the softies at the Palace have to wear sweaters during the winter months?

# URGENT!



NHPA MEMBERS REMEMBER

ADD \$2.00 FOR INSURANCE FEE

WHPA & NHPA DUES	\$12.00
INSURANCE FEE	<u>2.00</u>
	\$14.00

SEND TO:

WHPA SECRETARY/TREASURER  
 JOHN SECORD  
 2123 BROWN ROAD  
 FOND DU LAC, WI 54935

One Day Service  
 Sales Incentives  
 Awards, Trophies, Plaques

Manufacturer

**RUDIG OLYMPIC AWARDS**  
 126 S. 2nd Street  
 Milwaukee, WI 53204

Royce DeBow (414) 273-2727  
 National Sales Manager

---

PENSION & PROFIT SHARING PLANS

FANNIE MAES \* GINNIE MAES \* IRAS

SEP-IRAS \* ANNUITIES \* REAL ESTATE

6111 MAGNOLIA DRIVE OFFICE: (414) 771-3750  
 WISCONSIN RAPIDS, WISCONSIN 54494 HOME: (715) 423-4522

**CHRISTOPHER J. KITTI**  
 INVESTMENT PLANNER

**Charter Investment Services, Inc.**  
 AFFILIATED WITH CAPITAL FINANCIAL SERVICES, INC.  
 2323 N. MAYFAIR ROAD, SUITE 502  
 MILWAUKEE, WISCONSIN 53226

WISCONSIN HORSESHOE NEWSLETTER  
W204 N11912 GOLDENDALE ROAD  
GERMANTOWN, WI 53022

BULK RATE  
U.S. POSTAGE  
**PAID**  
PERMIT NO. 25  
GERMANTOWN, WI  
53022

### PITCHIN' PALACE

#### Tournament Schedule 1987-88

This year's tournament schedule takes a little different twist from those of years past as we put together a roster which offers three types of tournament formats to test your skills against your fellow horseshoe pitcher. The tournaments are designed to be simple, inexpensive and yet competitive to make a most enjoyable horseshoe pitching experience.

There will be two traditional eight-person round robin tournaments with scorekeepers provided. They are the "Hall of Fame" and the "Junior Scholarship Benefit Tournament." Entry fee for those will be \$15 per person.

New this year are the "Ringers Only - Keep Your Own Score," tournaments which are eight-person round robins, but only the ringers are counted and the players record their own score on the Pitchin' Palace's electronic scoreboards. This is an alternate pitch tournament and entry fee is \$10. Based on eight persons in a class, prizes will be \$30 for first, \$20 for second and \$10 for third. The balance of money will be put toward users fees.

Back again are the ever popular "Homer" tournament. "Homers" are doubles, round robin, 80 percent handicap tournaments. Double teams are placed in classes and the class winners advance to championship playoffs. Prizes are 40 percent of the entry fee for first, 20 for second and 10 percent for third.

The tournaments are:  
Sat. and Sun., Oct. 3-4  
"Ringers Only" Deadline is Friday, Sept. 25

Sat., Oct. 17  
"Homer". Deadline 12:30 p.m. same day

Sat. and Sun., Nov. 7-8  
Hall of Fame Tournament. Ceremony for Hall of Fame inductees on Sunday afternoon. Deadline Fri., Oct. 30

Sat., Nov. 28  
Homer Tournament. Deadline, 12:30 p.m. same day.

Sat. and Sun., Dec. 5-6  
"Ringers Only" Deadline Fri., Nov. 27

Sat., Dec. 19  
Homer Tournament. Deadline 12:30 p.m. same day.

Sat. and Sun., Jan. 2-3  
"Ringers Only" Deadline - Mon., Dec. 28.

Sat., Jan. 19  
Homer Tournament. Deadline 12:30 p.m. same day.

Sun., Jan 31  
"Super Bowl Sunday" Pitchin' Palace has planned a gala football-horseshoe party. More info will be available later but a fun tournament with special food treats will be offered.

Fri., Sat., & Sun., Feb. 12, 13, & 14  
Pitchin' Palace Team World Tournament (FORMERLY CAN-AM). Teams from the United States and Canada will compete for thousands of dollars in prize money. The top pitchers in the World will compete.

Sat. and Sun., March 5-6  
"Ringers Only" Deadline Fri., Feb. 26th.

Sat., April 9  
The Wisconsin Club Team Tournament. Clubs bring their top pitchers to the Pitchin' Palace for a daylong team shootout. Green Bay Club is the defending champion.

Sat., April 16  
"Homer" tournament. Deadline 12:30 p.m. same day.

Sat. and Sun., May 7-8  
"The Junior Scholarship Benefit" Tournament. Part of the entry fee will be donated to this very special fund. Eight-person round robin with scorekeepers provided. This is the first of Wisconsin's Summer Tournament Circuit.

Send all entries to PITCHIN' PALACE,  
14000 Leetsbir Road, Sturtevant, WI,  
53177 or to Tournament Director  
Richard Hansen, 3085 S. 76th Street,  
Franksville, WI 53126. Dick's  
telephone number is 414-835-1321.



14000 LEETSBIR ROAD  
STURTEVANT, WI 53177

Off I-94 on West Frontage Road  
Between Hwy. 11 & Hwy. 20

414-886-8555

1 Hour North of Chicago  
1/2 Hour South of Milwaukee