

The Spring Meeting of March 20th 1993 at Plover, WI

## SPRING MEETING

The WHPA has a current bank balance of near \$3400 as reported by John Secord, the state secretary and treasurer.

Lorraine Sternberg says the Jr Scholarship Fund is up to about \$8000 and has \$3000 committed to past winners.

Ann Opsteen sent word of her resignation as Hall of Fame director citing health reasons. The committee elected to reorganize rather than convene at this time.

Susie Pritzlaff agreed, with some urging, to become the new Hall of Fame director. The call went out for additional member/advisors. Archie Johnson of Brothertown volunteered. Edith McKinney of Luck also offered her services. Presently the other selecting committee members are John Secord and WHPA president, Dick Hansen. Future nominations for the WHPA Hall of Fame will be addressed to and by Susie Pritzlaff.

Dick Hansen has announced his intention to run for the 5th vice-presidency of the NHPA in his second attempt. Elections will be part of the national convention during the World Tournament this summer at Spearfish, South Dakota.

Hansen will also lead the Wisconsin delegate committee at the national convention. Only a few (5) delegates can attend. Hansen asked for applicants to contact him.

Non-profit status for the WHPA is still in the works and the cost has now risen to an estimated \$300.

Results of NHPA tournaments will be funneled through John Secord and must include; all card numbers, pitcher's name and state, the number of shoes pitched and ringers along with the tournament sanction number. Play-off games are to be included in the total shoe count.

Jane Meier and Jeff Secord of Fond du Lac, the host club of this year's State Tournament expect better conditions at the Fairgrounds this year. The horseshoe courts and related parking will be fenced to separate the tournament from the ongoing car show. The plus is there will be no extra charge for car show admission; the minus is the car show go-ers are for the most part unable to witness the greater display of talent - The WHPA pitchers.

President Hansen opened for discussion the "NHPA proposal". At first there was none. Then after a few remarks, open discussion from all corners of the room showed more than mere interest. It became cloudy to some and murky to others. Even after a chorus ayes and nays the proposal had to be broken

down and reworded. Finally the members found out that "naye" meant NO. Hands were not required. There will be no change in the method of keeping average of percentages in this state. We will continue to keep averages even on those pitchers who refuse to join the NHPA if only to protect the integrity of all tournaments within the state.

In related action the 55 people in the meeting room voted unanimously to increase and upgrade the tournament prerequisite for State Tournament entry. Starting in 1994 three NHPA sanctioned tournaments will be required for our State Tournament entry. No ifs ands or buts - it passed without one dissenting vote.

Essentially the meeting was over but a few more trial balloons were floated across the room for observation. Jeff Secord offered an improvement for the yet untried 10-man championship classes. [ Reserve the #10 spot in the championship class for the winner of the next lower class, (A or B whatever the designation). It would only require the completion of that class prior to the championship round and open the state title door to an additional seven pitchers without costing any extra games - a move-up capability of one.]

Terry Sternberg suggested more involvement of the WHPA executive board in the handling of the State Tournament. Hansen said he has already been considering having his staff making State Tournament awards.

It was suggested and approved to survey State Tournament entrants for their thoughts regarding the 'three trophy' tradition. The State entry form will carry the question.

John Secord showed some heavy brass medallions he thought might take the place of a trophy in the event of cash awards for the State Tournament. By his estimate, raising the entry to twenty dollars could provide awards of \$50 for first place and \$25 for second. Secord was adamant - cash awards will only come from increased entry fees.

Hansen talked of raising the normal 50¢ WHPA tournament participation fee to \$1 and further awarding State Champions \$200 each.

A couple of last year's champions were wearing their new WHPA State Title jackets. Some champions may get lucky again. What would be in store for them? Gift certificates from game related sales were suggested for champions who can double up.

Dan Jaglowski, the Plover tournament director from Waukesha and Royal Wood liaison man, set the Fall Meeting and Tournament date - Saturday, October 16, 1993. He has not made it mandatory to attend the meeting if you enter his tournament but strongly recommends it.

**DOWN AND BACK**

Played a down and back number with Nashville, Tennessee. Ordinarily its a neat way to do a time warp on Spring. This year things got out of kilter. Left Wisconsin in partly sunny shape and found the snow country had shifted to the South.

Nashville had a couple of inches, enough to cause the rebels to shut down mentally and in some cases physically. The Saturday horseshoe tournament at "Jack Freeman's Tennessee Horseshoes" had advertised a 52 player limit - 18 show-ups came to play.

Naturally they made a big thing about introducing the crazy guy who came down from Wisconsin during their worst weather of the winter. About that time Curt and Beaty Bestul of Eau Claire blew in on another snowy gust. They were making their way home from a Florida vacation stopping with horseshoe friends en route. Probably because of the weather, the electrical service was interrupted several times. The lights were off 8 to 10 minutes each time. Took a long time to complete the first shift.

"A" class in "Freeman's House" is really big-time. Even with the snow they had some big hitters like Ron Powell of Kentucky, Dale Henry of Indiana, and Jack Freeman of Tennessee pitching this weekend. Other times this winter their result sheets read like a directory of the top NHPA pitchers. "Tennessee Horseshoes" has become a magnet for many top pitchers. The new building sponsored by Jack Freeman is only part of the 'draw'. Music City Horseshoe Club - mostly average pitchers - runs the show and makes it go.

Don't pass up a chance to pitch with the Music City Club.

\* \* \* \* \*

Charles Christophlis former Sheboygan pitcher, died in his retirement home in California. "Charley" was known as the Sheboygan tournament director who had a prize for everybody - even if it was just a brat for last place. He was in his eighties but seemed to think he was still young. When the sound of a band spilled onto the courts there he was doing a dance while waiting to pitch. He knew how to have fun. Charley and Mrs. "C" made lots of tournaments together, wearing those matching blue hats, and a few years ago he made the WHPA Hall of Fame. Charley, you were a fun guy to know.

\* \* \* \* \*

Anybody want to direct a tournament? The WHPA has a great list of tournaments for 1993. Most are on the 'annual type' schedule - they keep on repeating.


Ever notice that the tournament directors also keep repeating? Take your turn at the wheel, OK?

**ARENA OPEN - APRIL 3-4**

Class	First Place	Second Place
A	John Udelhofen 63.4;	Lorraine Sternberg 61.3
B	Dan Bloom 57.4	Gus Schram 57.4
C	Dale Bauer 57.9	Jerry Volz 53.3
D	LaVern Richard 51.7	Mark Mauthe 48.3
E	Carl Gilbertson 42.6	Mal Barnitz 40.9
F	John Crook 48.3	Robert C Anderson 40.6
G	Frank Dunn 35.6	George Nachtigal 42.3
H	Ted Borgen 38.0	Sally Dietzel 31.7
I	Orville Baker 33.1	George Dorn 36.5
J	Julian Tijernia 24.3	Jon Mease 26.6
K	Rob Pankhurst 24.9	John Aeschlimann 20.6
JRS	Heidi Sternberg 55.5	Jason Goldsmith 63.0

94 pitchers filled the Arena courts for two full days. Heidi Sternberg, of Richfield, winning the junior class, tied Ray Hill of Wakefield, MI for high Tournament game at 80%. Although John Udelhofen of Barneveld repeated as tournament champion, Ralph Maylahn of Genesee Depot pitched for the tournament high average of 66%. The outstanding performer of the weekend was John Crook of Spring Green pitching 13.18 percentage points over his entering average. In producing the results the Mauthe's added the tag, "Thanks to all the pitchers and workers."-SPORTS ARENA

**NHPA APPROVED**



**R. PETE DONOHO**  
704 State St.  
Redding, CA 96001  
Bus. (916) 243-5761

**CAL FLIP**  
Stainless Steel  
\$54.50 pr.  
& \$ 3.50 UPS  
\$58.00 Total

High Grade Steel  
\$34.50 pr.  
& \$ 3.50 UPS  
\$38.00 Total

**Guaranteed one year Stainless Steel only**  
USA Pat. 288-575

Made in U.S.A.  
Richmond, CA



**BURT TROPHIES, INC.**  
10885 Trophy Lane & E. 29th St.  
Marshfield, Wisconsin 54449

Telephone 715 384-5839

Call or write us for all your award needs. Write for free color catalog.



TEAM-WORLD 93 IS A CLASS "A" EVENT  
ENTRY NUMBERS DOWN - RINGER PERCENTAGES UP

Beloit's Telfer Park will see the greatest array of top flight horseshoe pitchers ever to attend the annual TEAM-WORLD tournament.

The number of teams from states and provinces pitching for the traveling TEAM-WORLD trophy is down to sixteen this year. No attempts were made by the T-W committee to swell the field to 20 teams as in past years. The result is a very competitive field of some of the best teams in the country.

Minnesota, the defending champions are returning with all of last year's winning pitchers. Phyllis Negaard, the doll of the NHPA and often a World Champion, can be seriously challenged by her sister and teammate, Bev Nathe. Little Lu Cave, newer to TEAM-WORLD, enters this year with better numbers than former World Champion, Dale Lipovsky. Dave Hughes and Len Lipovsky, players who helped Minnesota to the TEAM-WORLD title other years, are now pitching for the for Minnesota-2, the North country's second entry.

Northern California made an impressive climb in the ladder play-offs of '92 missing only the the top spot. Walter Ray Williams Jr, presently the hottest pro bowler on the tour, will head up the California regulars, Billie Sue Pennington and pitcher/president of the NHPA, Dave Loucks. At 70%, Gail Sluys is not exactly coming along just for the ride but probably Paige Pennington is - just riding. She is fiancee to the most popular man in horseshoes, avidly watches the PBA tour, and carries a 62+% ringer average.

Indiana, always threating, returns with the same players but in the past year two more of their number have gained stature as World Champions. For sure, Sue Snyder is still the same nice person we have grown to know, but now, she is the reigning Ladies World Champion averaging over eighty percent. Karl Van Sant really hasn't improved his game any since last year but it hasn't slipped either. He is Indiana's other reigning World Champion - of the senior class. The remainder of Team Indiana is the well known Seibold clan, with former World Champion, Mark Seibold.

Iowa surprisingly did not send Cathy Carter or the 1992 Men's World Champion Kevin Cone. Crops come first and Cone feels this is one of a farmer's busiest times of the year. Fortunately there is one team from Iowa if only to keep the entry alive for future years.

Missouri is back with two teams, one for the win the other for support. Many times World Champion, Vicki Winston leads the best from Missouri.

Ontario entered most of their same gang but just one McLachlin, - Kevin. A Sandy Janssens, pitching near 80% heads their roster. Could it be that young girl who once won the World women's title is married? Saskatchewan has booked in for an extra day this year - just in case they make the finals., again.

Kentucky is back. Can it be true? Well traveled Don Titcomb now has a Kentucky card? Ron Powell agreed to pitch the TEAM-WORLD when Lois Webster signed on. The Merediths, Charlie and Ron, more than fill this formidable entry.

Illinois has two entries again. A few years ago they were first and fourth in this tournament. The names look much the same. Cliff Baker and Charlie Webb have first team honors and Larry Knop carries the fire for Illinois-2.

Wisconsin figures to do some damage this time. With four tams entered hopefully they will not take turns upsetting each other, but the competitive edge from within remains strong. The top four pitchers for Wisconsin are: Ralph Maylahn, from Genesee Depot; Rich Pichler, of Mondovi; Don Kangas, Colgate; and John Udelhofen, from Barneveld.

This has been a hasty look at the roster for TEAM-WORLD 93. For the complete picture, competition will begin at 1:00 P.M. Friday, April 30th at Telfer Park in Beloit. Games will resume all day Saturday with the finals Sunday afternoon. All it takes for admission is one raffle ticket available for only \$1 from any member of the Beloit Horseshoe Club. Come on down! and see 70 of the best horseshoe pitchers in the nation. Expect to see two ringers for every three shoes pitched. Watch their styles. Maybe it can help your game. See you in Beloit!

One Day Service  
Awards, Trophies, Plaques  
Sales Incentives

**RUDIG OLYMPIC AWARDS**

118 S. 2nd Street  
Milwaukee, WI 53204

Royce DeBow  
National Sales Manager

(414) 273-2727  
FAX 414-273-7039



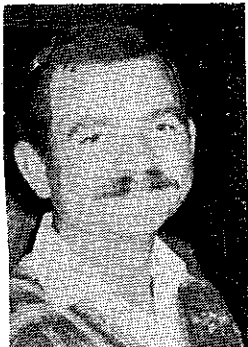
**Royal  
Wood**  
SPORTS CENTER

WISCONSIN  
HORSESHOE

HALL  
OF  
FAME

1501 CEDAR DR., PLOVER, WI  
715-341-8950 - GROUP PARTIES

INDOOR HORSESHOE CLAY COURTS



## DICK HANSEN WHPA PRESIDENT

Once again the ability to compromise came out above all else. A change in the WHPA Bylaws was needed to bring us in line with the NHPA Bylaws covering sanctioned tournaments. Correcting such matters is why we have spring and fall meetings. Someone asked, "Does anything ever get done at those meetings?" Yes, I think it does. Change never comes easy but it will come. To those that took the time to attend the spring meeting, I thank you. You made what could have been a very difficult meeting, be over in less than three hours. You made the changes that I feel will make the WHPA better and stronger.

I would like at this time to give a personal thank you to one of our hardest working members, Ann Opsteen. Ann has been the chair of the Hall of Fame Committee for all of my years as president, plus. She has wrote countless letters in search of information on potential Hall of Fame members.

It has been a pleasure for me to work with her on the committee for the past six years. Ann has requested to step down as chairman for personal reasons. I reluctantly have done so, and appointed Susie Pritzlaff as chairman. We also added Archie Johnson and Edith McKinney to the committee. I wish Ann the best of health and hope to see her at the State this fall. She will be missed on the committee.

My rule this time around came up at the Arena tournament. Some questions came up at the completion of the tournament. A three way tie for first place in Class A. Most were ready for a playoff game. No playoff at this tournament. Percentage was used right down the line. Was the tournament director right or wrong? The NHPA official rules for horseshoe pitching had the answer. Section G. "In National, Regional and State Championships, all ties for first place must be played off. Ties for other places may be settled by play-off, percentages or who-beat-whom.

In all other sanctioned tournaments, ties for any position may be settled by playoff, percentage or who-beat-whom or, if countall is used, total points. In any playoff situation, the method of play and length of game shall be decided by the tournament committee." P.S. to Charles McPhail of Platteville. Thanks for making me the gavel. It will come in handy for those times that my small one will just not do the job.

### RESULTS Spring Meeting Tournament Sanc#28-93-002

CLASS	First Place	Second Place	
A	Jane Smith 54.4	Edie Mc Kinney 48.4	
B	Cliff Troullier 45.6	Grea Bottlemv 44.6	
C	Mark Mauthe 46.8	Jim Haupt 35.6	
D	Rich Wieczorek 36.8	Bob Kallstrom 29.2	
E	Lois Gaulin 26.4	Rich Dobbie 22.4	
F	Sal Okon 20.4	Kip Gusner 25.2	

Thanks to all for coming to the state meeting. Remember the next state meeting on October 16, 1993. Deadline for tournament sign-up - September 25th. A thought: if each one of us brings another member to the meeting, we'll set an all-time high attendance record.

-Dan Jaolowski

6111 MAGNOLIA DRIVE  
WISCONSIN RAPIDS, WISCONSIN 54494

OFFICE: (414) 771-3750  
HOME: (715) 423-4522

**CHRISTOPHER J. KITTI**  
INVESTMENT PLANNER

 **Charter Investment Services, Inc.**

AFFILIATED WITH CAPITAL FINANCIAL SERVICES, INC.

2323 N. MAYFAIR ROAD, SUITE 502  
MILWAUKEE, WISCONSIN 53226



**WISCONSIN HORSESHOE  
PITCHING SUBDISTRIBUTORS**

*GAME RELATED ITEMS*

**Elaine & Cliff Troullier**

3126 Wagon Wheel Road, Manitowoc, WI 54220  
(414) 682-3197

*(The PAUL NEUMANN display)*

## THE BRICK MAN

by Jim Haupt

Karl Van Sant of Cayuga, Indiana, horseshoe pitcher known throughout the NHPA long before he became the 1992 Senior World Champion has another interesting avocation. His card says, "Collector of Name & Design Brick". By actual count Van Sant has, on display, over 3000 pieces of baked clay, all with some sort of inscription or marking.

I can't recall just why he gave me his card a few years ago but the brick message was unique. Maybe I have brick on the brain or carried one too many in my younger days as a hod-carrier or 'hunt-lunger' as the old-timers called it. So I jumped at the chance to see Van Sant's private collection.

3000 brick he said and each one has a little history of its own. We drove to the edge of town where Van Sant lives in a stone house - Indiana limestone, he says, my brother's a brick layer and I was a carpenter. We did all the work.

The way to Van Sant's 'Brickyard' is paved with duplicates from the collection. From his house to the 'Brickyard' shed Van Sant has a designer brick walk over 100 feet long and a good yard wide. [It is uncommon to lay a brick with the brand marking showing. In the trade a backwards brick is known as a 'shiner' by the way it breaks the pattern.] Van Sant's walk, on a concrete base, has every piece laid design side up, 'shiners', for maximum effect. All the brick in the walk are clay pavers laid in mortar separated with a cross joint.

For the uninitiated, brick roadways were one of the forerunners to modern concrete surfaces. They stood up to the hard wear of iron clad wagon wheels, teams of shod horses, and steel sled runners. Local availability, common size, and fabrication made paving brick the newer material choice over harder, cut granite cobblestones - many of which came from Europe as ballast in an otherwise empty vessel. Brick were versatile. Re-paving meant re-laying by turning the brick upside-down. The mark or brand imprinted during molding was protected as it was on the side and not intended as a weather surface.

Hardly a man alive can remember when all paved roads were stone or brick. Its only the old roads and some alleys that remain cobblestone. Van Sant has an old picture of a paving crew laying a cobble stone road. "That's my dad, third from the left", He says betraying a reason for such and odd interest.

Van Sant began collecting about twenty years ago and since he's traveled far and wide searching

out old brick plants, demolition sites, and any old spot where brick may have been buried. Even existing walks and old roadways are fair game. One has to do some historical research to find likley sites. Van Sant is not a pack-rat. His home and brickyard are neat and nifty but he can see value where others may not.

There exists, I'm told, a Brick Collectors Association with a newsletter and a national convention which Van Sant has also hosted.

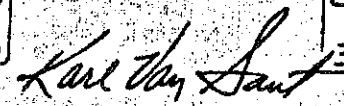
A few years ago he had to build an out-building he calls a shed to house the collection. Its about the size of a four car garage built of brick he resurrected when the town tore down an old landmark. Three of the inside walls are lined with collector bricks. Would you believe alphabetical order? Each displayed in a separate little compartment. Many had to be scrubbed clean, coated with sealer, and the brand highlighted with contrasting paint. One says 'Canton, Ohio', another with a strange logo that deciphered means Terre Haute - a city in Indiana. 'CONVICT MADE' explains one more - 3000, each one differing somewhat. Yes, it is impressive.

I found a 'special' brick laid dry in a greenhouse floor. It showed two ducks in flight and was a common building brick. The owner said, OK, take it and revealed that it was made by the old "Duck Creek Brick Company" formerly located in Duck Creek, next to Green Bay, Wisconsin. Its now called Howard but Duck Creek still flows. So I sent the "find" to Van Sant. His reply included a diagram of that brick and three others like it in the Duck Creek series. Oh Well.

Want to talk some more brick? Ask Karl Van Sant, the Senior Champ if he has his card - brick card that is.

**Collector of Name & Design Brick!**

TERRE HAUTE  
BLOCK



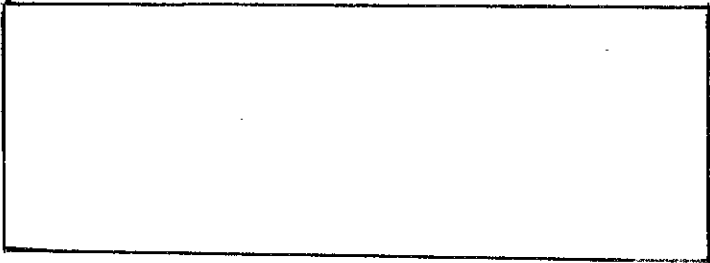
BRAZIL

**Box #415  
Cayuga, Ind. 47928**

**Ph. (317) 492-3280**

WISCONSIN HORSESHOE NEWSLETTER  
W204 N11912 GOLDENDALE ROAD  
GERMANTOWN, WI 53022

BULK RATE  
U.S. POSTAGE  
**PAID**  
PERMIT NO. 25  
GERMANTOWN, WI  
53022



CHECK OUT THE NEW EXPANDED  
FACILITIES!

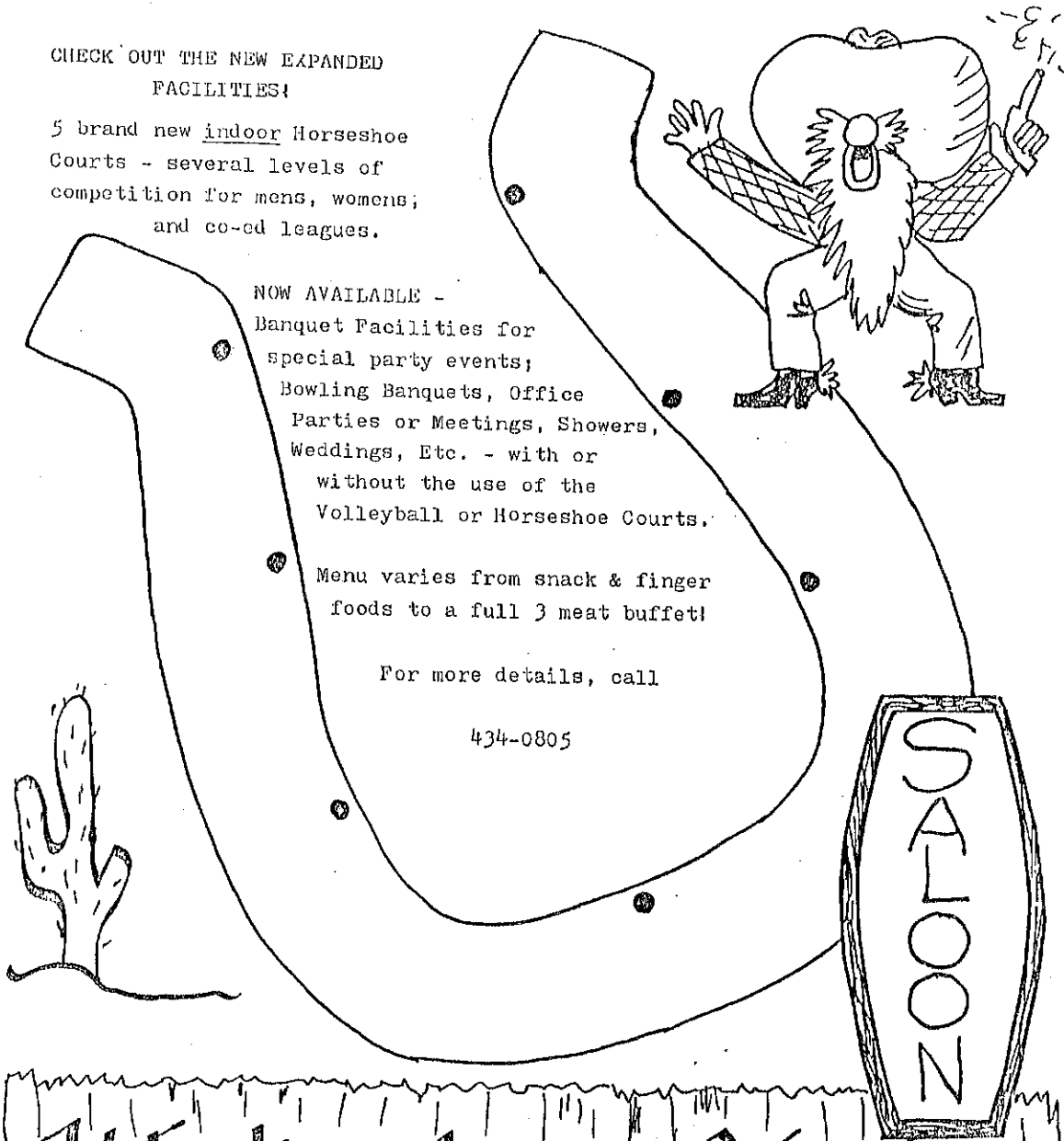
5 brand new indoor Horseshoe  
Courts - several levels of  
competition for mens, womens,  
and co-ed leagues.

NOW AVAILABLE -  
Banquet Facilities for  
special party events;  
Bowling Banquets, Office  
Parties or Meetings, Showers,  
Weddings, Etc. - with or  
without the use of the  
Volleyball or Horseshoe Courts.

Menu varies from snack & finger  
foods to a full 3 meat buffet!

For more details, call

434-0805



Watering Hole  
2107 Welp Ave. Green Bay, WI