

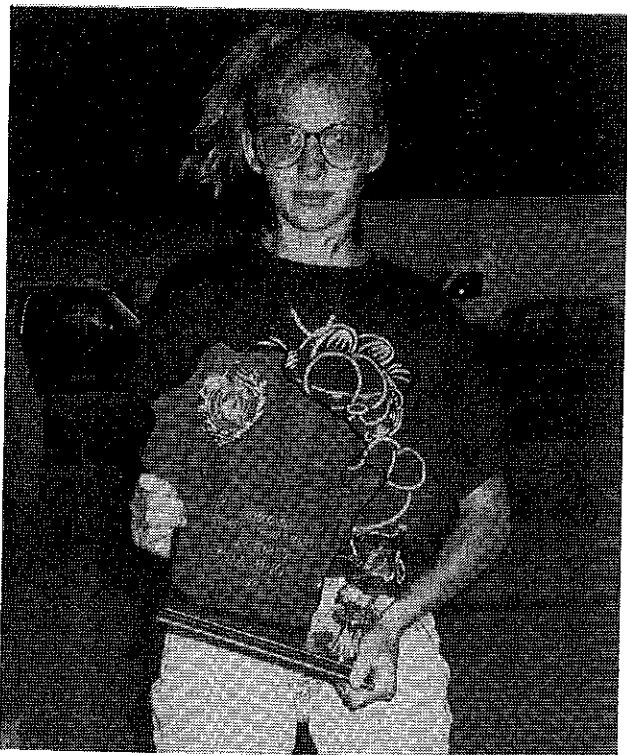
John Udelhofen



**S  
T  
A  
T  
E**

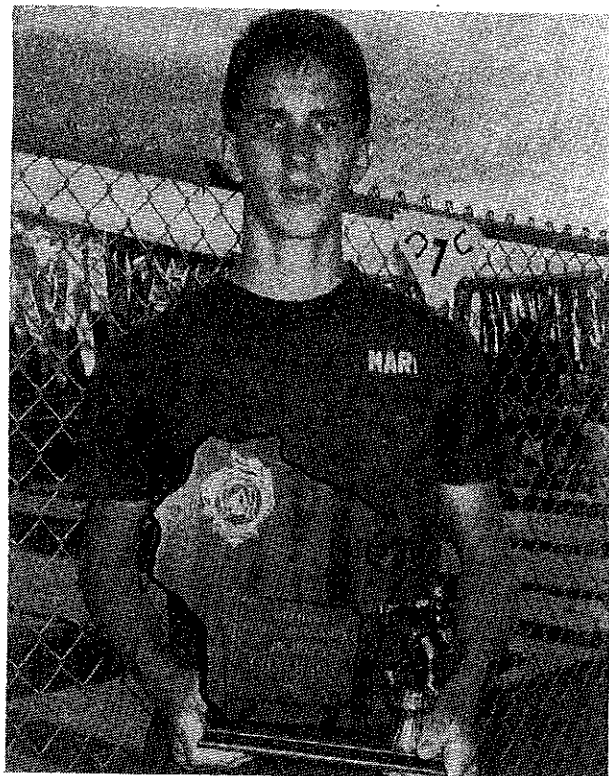


Edi McKinney



Heidi Sternberg

**C  
H  
A  
M  
P  
S**



Mark Mauthe

## WHPA CALENDAR

- OCT 12-13 **ARENA NHPA FALL SINGLES**; sanc. & WHPA approved  
D/L 9-27; \$15 to Norm Mauthe 865 Eastman  
Platteville, WI 53818 or (608) 348-9697
- OCT 12-13 **BIG APPLE DOUBLES**; non-sanctioned; INDOOR  
D/L 10-6; \$10 to Big Apple 5733 Cty Trk "R"  
Manitowoc, WI 54220 or (414) 684-9764
- OCT 26 1:00PM **WHPA FALL MEETING** all active & prospective  
**members** are invited; ROYAL WOOD SPORTS CENTER - Plover
- OCT 26 -27 **FALL MEETING TOURNAMENT** - NHPA sanc; WHPA app  
D/L 10-12; \$15 to Ken Jaeger Rt4 Knight Rd  
New London, WI 54961 or (414) 982-6287
- DEC 7-8 **ROYAL WOOD TOURNAMENT** NHPA sanc. & WHPA app.  
D/L 11-24; \$15 to Doug Berry 1501 Cedar Dr  
Plover, WI 54467 or (715) 341-8950



## FALL MEETING

### FALL MEETING TOURNAMENT AT ROYAL WOOD

We are going to be there for the Meeting; We have to have a tournament. No ifs ands or buts: It has to be.

Ken Jaeger saw the loose ball and grabbed it. Jaeger is now (almost) a tournament director. He plans to run two class sessions before the meeting (1:00 P.M.) and one following. Furthermore, even if October 26th is prime bow hunting time, Jaeger is willing to run a couple of classes Sunday morning if necessary.

Get the complete dope from the calendar in this issue. One more thing; an entry limit may have to be imposed. And if you don't want to pitch Sunday morning, WE are going hunting!

## CHARLEY CHRISTOPLIS

### LETTER TO CHARLEY CHRISTOPLIS

Charley, you should have been there. Dick Hansen had to give your Hall of Fame plaque to your old buddy Leon Uhl. There were some important people from the city of Fond du Lac to open the ceremony and of course Hansen read all that good stuff about you and the old Sheboygan tournaments. That reminds me. Say hello to Mrs. "C". Tell her I miss those double brats.

Sure I know you wanted to be there. I could tell from the way it broke up the whole Srenaski family that the Hall of Fame recognition means a whole lot to those people who have given a good part of their lives not to a sport but to other people. I guess the more you give and do the more you appreciate the recognition. I can almost feel the depth of your acceptance.

It was your turn to be famous, your moment in the Sun and there you are out in California. That picture in the State program is you alright, hat and all but the tile roofs in the background are another reminder that you've left Sheboygan behind.

Five or six members of the Hall of Fame were on hand to witness your induction and along with some sixty other members you received a resounding round of applause.

All of us back in Wisconsin wish you pleasant days - and Charley, thanks.

P.S.

Wally and Cy Srenaski will be hanging your plaque along with theirs in the Hall of Fame display some day soon. Tell your grand-kids they can see it at the Royal Wood Sports Center - Plover, WI

## Hall of Fame



WALLY & CY SRENASKI

Finally when we speak of the 1991 State tournament we can use the word crowd in its true sense. The car show and horseshoes can exist. They compliment each other. Wasn't all that activity great? The loudspeaker on court one with all the music, and announcements was testimony that horseshoe pitchers enjoy noise, even if it is someone else's noise. Did you hear a yodel or two? Was that guy for real?

If your class pitched Monday you missed the hub-ub but not the decorations. The F.D.L. club festooned the fence with some sparkly stuff and lots of little flags presumably in honor of the All-American game. The new clubhouse has an added wing. Looks like an entertainment concourse under cover but open all around. We used it as a dinning room. Out back we saw a 'state tournament' sized Webber grill as wide as an axe handle.

The weather was either great or windy depending on your reason for being there. Watchers loved it: Pitchers despised it. No rain, no heat, but those little flags were laying flat out West giving those qualifying classes all kinds of grief. Many good-name pitchers never made their appointed slots in "A" and "B". To say the least, it must have been the wind that made a shambles of the championship class. Luckily all four presently competitive titleholders managed to remain in the top flight of the championship class.

In spite of the tough pitching conditions and missed assignments, most of the championship men's class opted for the new qualification format. John Secord, WHPA secretary, took an opinion poll of the participants before their classes began Sunday. Only four pitchers were not in favor of continuing the qualification format in future years. This was a trial year for both 40 point championship games and preliminary qualification. Its pertinent information for the Fall, October 26th, Meeting.

Secord's job as an F.D.L. member was posting the result boards. The interest shown in the hot results caused Secord to call this "One of the most intense State Tournaments I've experienced".

Forty points and out brought the watchers closer to the action. In the final game of Womens "A" Lorraine Sternberg was up with the defending champ, from Balsam Lake, Jane Smith. Sternberg had two losses and no hope. Smith had just one loss. On the adjacent court was Edie McKinney, also with one loss. Her opponent Phyllis Davids was pitching with two losses. If Davids could beat McKinney and Sternberg got to Smith it would throw the class into a four-way playoff. We eagerly watched the points approach 40. The point trade-off was sporadic. McKinney bested Davids. We all watched those points as Sternberg had now caught up to Smith at 33 points. Sternberg won it with a ringer and a stand-up point. Smith could not get through.

Edie McKinney is the new women's State Champ. She did it the hard way, beating her long-time rival and/or partner Jane Smith. for the first time in State Tournament competition.

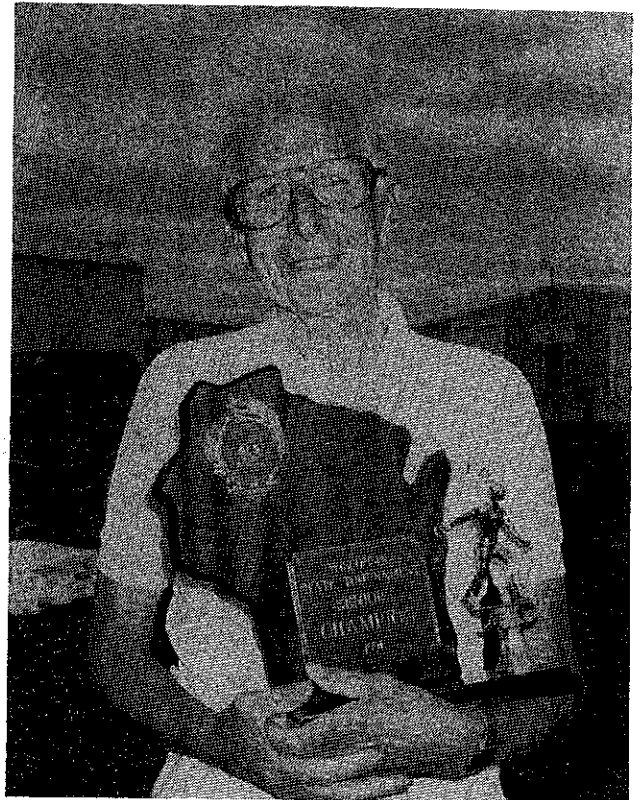
The Juniors, sometimes referred to as the big money players, had to go to the playoff courts to decide both the boys and girls titles.

Heidi Sternberg, at one point, looked to be nursing a losing effort. About that time Pam Steinke, the D.C. started coasting. Sternberg came from behind and took the '91 Jr. Girls title much the same as Steinke did a year ago. Steinke is 17 years young but her future shoes will be in the womens classes. Sternberg is a mere 14 years, pitches a nice  $1\frac{1}{4}$ , and looks to be in control of the future Junior Girls class. (Did y'all know that Heather Sternberg is Heidi's twin?)

Whoops. We forgot all championship classes this year were to be 40-point games. The Boy's class played 50-shoe games and nobody noticed til after Mark Mauthe re-emphasized his champion position. Jason Goldsmith, pitching at the top of his game, did well to cause a playoff situation. Mauthe deserved to repeat. He earned the '91 State title by pitching lots of good tournaments throughout the past year.

When he wasn't registering classes or making awards, Skinny Ollerman found time to pitch the Senior class. This season Skinny has been on and off. Hanging on to the shoe forced him to quit the Goldendale tourney. These courts must have been more to his liking. He went 4 and 1 to win the State Senior Championship. Long-time fellow competitor, Felix Kubly went 3 and 2 for runner-up.

## STATE CHAMP



C.L. Ollerman

**STATE TOURNAMENT**

It first appeared the seed in Men's "A" was out of whack. Randy Rein, the D.C. was playing an 'heir-apparent', Don Kangas in the lead off round. We had hoped that match would be later. It may have been Rein's undoing. He lost in 72 shoes.

Second round surprise found Wally Srenaski doing a catch up number on a Kangas miss. Srenaski scored a six to give Kangas loss #1.

Udelhofen tagged the three time champ, Stevens, with an "L". Rein lost again and once more. His chance was gone.

Stevens jumped on Kangas avenging the past. Kangas said, "Its never over til its over". "Over" was closer than he had hoped. Udelhofen stealthily had kept on winning.

Last critical matches had Kangas, down two, pitching Udelhofen. And Ogiba meeting Stevens. Udelhofen must win or Stevens must loose.

Stevens, behind 1 to 30, made a valiant comeback but Ogiba ended it and took him out of the hunt. On the other court Udelhofen and Kangas traded strings of 20 ringers for 22 shoes. At 72 shoes John Udelhofen became the State Champ for the third time in the past nine years.

Sharing the Fairgrounds with the Street Rod people was new, different, and a pleasurable diversion. That was easy to see but how about the computer that we could not see. It provided the class print-outs. All the result sheets were made by computer. Notice the wins and losses were posted before the score sheets went to the computer room? Round robin cards were a little different; also made by computer. Sounds like computer did just about everything except pitch the shoes and keep score. And we never saw it!

We saw Jim Bloemers and Skinny Ollerman and John Secord and many others of the F.D.L. club but we didn't see the computer operators. Rumor has it, Lynn Bloemers and Sandy Secord spent the weekend out of sight punching computer keys. So maybe the computer makes it easier for just one person to do all the stats.

Thanks Fond du Lac. You guys and Gals ran a quality State Tournament.

**PROPOSAL**

A PROPOSAL FROM THE MARSHFIELD HORSESHOE CLUB

The proposal that the Marshfield Horseshoe League would like to make is:

All State Tournament pitchers shall score a minimum number of games that will be determined by the total games to be played at that tourney divided by the number of entries.

I think the computer could figure out some sort of schedule out.

The reason behind our proposal is there are a number of pitchers who do not have a home club; so therefore, never have to keep score or have the problem of finding scorekeepers for a tournament.

Also the problem of untrained scorekeepers... I don't have a problem with youth keeping score so long as they know how. I know of two examples at the 1991 tourney and there were similar problems at the Pitchin' Palace State,(Tournament in) 1986.

I and others don't think that's asking too much of pitchers to keep score for approximatley four games. If some pitchers don't know how; its about time they learn.

See you at the Fall Meeting, Ron Zeppelin

6111 Magnolia Drive  
Wisconsin Rapids, Wisconsin 54494

OFFICE: (414) 771-3750  
HOME: (414) 423-4522

**CHRISTOPHER J. KITTI**  
INVESTMENT PLANNER

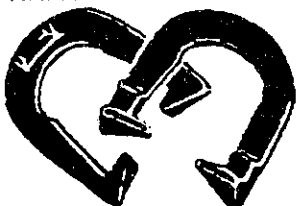
**Charter Investment Services, Inc.**

AFFILIATED WITH CAPITAL FINANCIAL SERVICES, INC.

2323 N. MAYFAIR ROAD, SUITE 502  
MILWAUKEE, WISCONSIN 53226

**Stocks, Bonds, Mutual Funds,  
Government Securities, Money Markets  
TAX FREE SECURITIES  
Complete Financial Planning**

NHPA APPROVED



**Guaranteed one year  
Stainless Steel only**  
USA Pat. 288-575

**B**

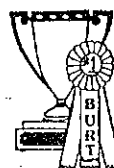
**R. PETE DONOHO**  
704 State St.  
Redding, CA 96001  
Bus. (916) 243-5761

**CAL  
FLIP**

High Grade  
Steel  
and

Stainless Steel  
2 lb. 9 oz. only.

Made in  
U.S.A.  
Richmond, CA



**BURT TROPHIES, INC.**

10885 Trophy Lane & E. 29th St.  
Marshfield, Wisconsin 54449

Telephone 715 384-5839

Call or write us for all  
your award needs. Write  
for free color catalog.



**PLATTEVILLE**

**Player of the Year**

They come like bees to honey. Iowa pitchers think Platteville is a suburb of Dubuque. "A" was half Iowa, Will Foelske, Harry Price, Jerry Roussel, and Red Henton. They are part of what they call "The Iowa Pro-Tour". Even the manager, Joe Dolter, was there. Don Kangas took high game honors - 80%. Mark Mauthe had high tournament percentage. And the Goldendale duo dominated the ladies class. Once again "Country Kitchen of Platteville" contributed to the prize fund.

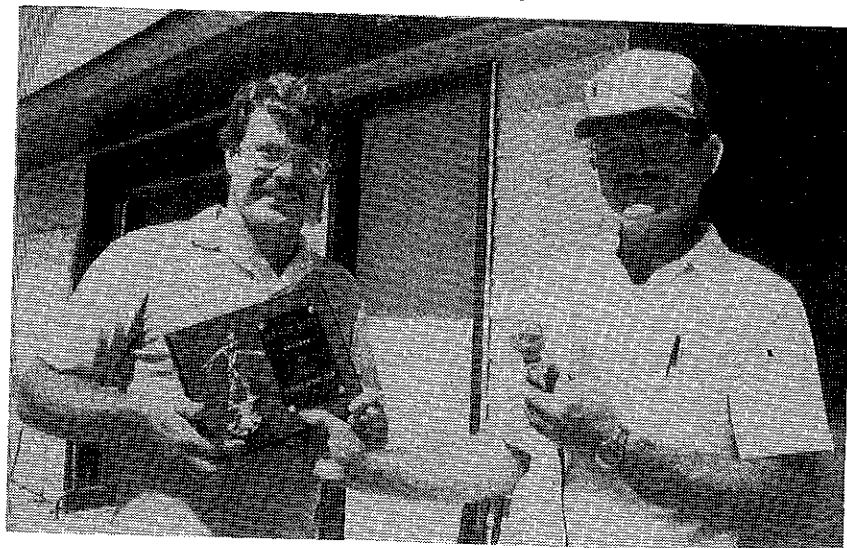
<b>A</b> Wil Foelske	62.6	<b>B</b> Dick Hefel	50.4
John Udelhofen	60.0	Jerry Schroeder	48.4
<b>C</b> Paul Federer	44.0	<b>D</b> Bob Traber	43.1
John Barden	47.7	Pat Spahn	42.0
<b>E</b> Jim Crook	44.3	<b>F</b> LeRoy Wipperfurth	37.2
Ted Rohde	36.6	Carl Gilbertson	34.2
<b>G</b> Herb Meyer	38.9	<b>H</b> Bob Novinski	26.0
Ron Hying	29.4	Jerry Donar	27.4
<b>Women</b>		<b>I</b> Dale Griffith	18.9
<b>A</b> Joan Guetzke	57.6	Ken Melssen	13.4
Lorraine Sternberg	66.8	<b>A Juniors</b>	
<b>B</b> Marge Burkart	42.0	Mark Mauthe	67.7
Sally Dietzel	44.8	Heidi Sternberg	47.7
<b>C</b> Carol Burkart	26.8		
Sheiran Digman	23.6		

<b>RANDY REIN</b>	<b>145</b>	Lynda Tunner	56
DON KANGAS	127	Gene Budelier	55
KEN JAEGER SR	100	Chet Hermansen	53
Joan Guetzke	99	Joel Bartley	52
Jim Haupt	99	James Bloemers	51
Elaine Troullier	96	Chris Kitti	50
Tony Scrima	90	Dorothy Schelke	49
Cliff Troullier	90	Cyrena Srenaski	49
Paul Federer	87	Terry Sternberg	49
Mike Hansen	83	John Udelhofen	49
Gus Schram	83	Hank Zeisse	49
Tony Gaetz	80	Floryance B.	48
Bob Traber	80	Clayton Gage	48
Dennis Bach	78	Ken Davison	47
Jane Smith	73	Harold Laws	47
Lorraine Sternberg	73	Gladie Lila	47
Teresa Donar	71	Phyllis Davids	46
Gerri Meistad	69	Marv Guetzke	46
Ralph Maylahn	66	John Jankovich	46
Jeff Secord	65	Brian Repinski	46
Ann Opsteen	61	Ralph Gullingsrud	45
Chet Ogiba	58	Michelle Harder	45
Wally Srenaski	57	Merlin Ludwig	44
Carla McFarlane	56	Joan Struebing	44
John Secord	56		

Dick Hansen who developed and tabulated the Player-of-the-year competition, presented the trophy and first place award to Randy Rein at the State Tournament.

Points accumulate for entering and placing in State Scheduled Tournaments. They vary from 3 points for entry to 13 points for a first place finish. Rein's effort resulted from entry in 15 tournaments throughout the state.

Everyone likes to see the State Champion pitch their tournament. "A" pitchers want another crack at the champ. Rein put it on the line more than any other State Champ in recent memory.



**WHPA OFFICERS**

**PRESIDENT**

Richard Hansen  
3085 S. 76th ST.  
Franksville, WI 53126  
414-835-1321

**SECRETARY-TREASURER**

John Secord  
W 6868 Brown Rd.  
Fond du Lac, WI 54935  
414-922-0080

**1ST VICE PRESIDENT**

Jane Smith  
R. Rt. Box 17  
Balsam Lake, WI 54810  
715-485-3057

**2ND VICE PRESIDENT**

Curt Bestul  
1412 Sherwin Ave.  
Eau Claire, WI 54701  
715-832-3603

**HALL OF FAME**

Ann Opsteen  
304 Williams St.  
Combined Locks, WI 54113  
414-788-1202

**SCHOLARSHIP FUND**

**JUNIOR PROGRAM DIRECTOR**  
Lorraine Sternberg  
W206 N13520 Woodside Ln.  
Richfield, WI 53076  
414-677-3300

**NHPA REGIONAL DIRECTORS**

Jim Haupt  
5075 N. Elkhart Ave.  
Milwaukee, WI 53217  
414-964-2735

Ken Jaeger  
Rt. 4 Knight Rd.  
New London, WI 54961  
414-982-6287

Jane Smith  
R. Rt. Box 17  
Balsam Lake, WI 54810  
715-485-3057

**WISCONSIN HORSESHOE NEWSLETTER**

W204 N11912 Goldendale Rd.  
Germantown, WI 53022  
414-628-1484

**EDITOR / PUBLISHER**

Susie Pritzlaff

**STAFF / WRITER**

Jim Haupt

Published eight times annually @ \$6.00 / yr.

**MOUNTAIN**

**KEWASKUM**

BY GIL GENKE

The Mountain annual tournament came off without a hitch Saturday and Sunday. a unique situation accured on Saturday, the class F had a six way tie for first, Dick Hanold came out with the first place trophy.

This tourney followed it's schedule to a "T" which was run again by John quandt and his well abled staff. No rain delays like other years made this possible.

Swen Bowman (Founder of these courts) would have been very proud of these results and the way it was run.

The biggest little horseshoe club with the best courts in the state is the definition of the Indian word, KE-WAS-KUM. This time they played host to 104. Some came from a far-piece - Marengo, Mosinee, Benoit, Platteville, The Dells, and The Rapids. The family score is: Bartley, 7; Sabish, 5; and Sternberg, 4. Wait a minute. We also see 5 Boegels.

The outdoor bar is set-up next to the courts under the oaks. It can become a noisy scene. Never heard the complaint of having too much fun before but that's the way it is at Kewsakum. Fun it thrust upon us.

<u>CLASS A</u>		<u>CLASS B</u>	
Don Kangas	68.8	Kent Anderson	57.1
Ken Maki	65.1	Gus Schram	54.2
<u>CLASS C</u>		<u>CLASS D</u>	
Ken Jaeger	51.0	Lowell Kent	44.6
Don Smith	47.5	Tony Gaetz	43.2
<u>CLASS E</u>		<u>CLASS F</u>	
Waino Mattson	50.0	Dick Hanold	44.6
Dennis Bach	43.2	F. Warmbrunn	37.5
<u>CLASS G</u>		<u>CLASS H</u>	
Joe Felton	44.2	Leon Fischer	38.5
Joe Maino	43.2	Sam Satonica	30.7
<u>CLASS I</u>		<u>CLASS J</u>	
Michael Green	29.6	R. Echardt	25.3
Dick Baeten	33.2	Dave Aho	33.9
<u>CLASS K</u>		<u>CLASS L</u>	
R. McDermott	39.2	Leroy Meyer	21.0
E. Sebranek	29.2	Henry Zeisse	25.0
<u>CLASS M</u>		<u>CLASS N</u>	
Will Smith	31.7	Darwin Olsen	24.3
Dick Schulz	30.0	Bob Trossen	22.8
<u>CLASS O</u>		<u>CLASS P</u>	
D. Meulemans	28.9	Wally Pipp	20.7
Bob Paape	23.5	Dave Paape	16.4
<u>CLASS Q</u>		<u>CLASS R</u>	
H. Poutanen	20.0	Jeff Schmidt	17.5
Norman Payne	27.1	M. Lambrecht	11.0
<u>WOMEN</u>		<u>CLASS B</u>	
<u>CLASS A</u>		R. Selissen	31.7
Gladi Lila	55.6	Judy Talbacka	33.5
Ann Opsteen	53.6	<u>MIXED JUNIORS</u>	
<u>CLASS C</u>		Rick Poppe	48.1
Helen Heimerl	29.5	Brad Pirlot	24.3
Jody Cook	29.0		

<u>CLASS A</u>		<u>CLASS B</u>	
Don Kangas	69.7	Glenn Bogenschneider	42.9
Mark Stevens	65.4	Cliff Troullier	50.0
<u>CLASS C</u>		<u>CLASS D</u>	
Leon Voigt	44.6	Bob Traber	43.2
Jim Bloemers	45.1	Dale Heineck	39.6
<u>CLASS E</u>		<u>CLASS F</u>	
Joel Bartley	38.0	Ron Sabish Sr	31.6
Wally Michaels	33.2	Larry McCutcheon	31.2
<u>CLASS G</u>		<u>CLASS H</u>	
Fred Wiedmeyer	42.4	Tim Bartley	28.0
Hank Zeisse	27.6	Bob Damkot	27.2
<u>CLASS I</u>		<u>CLASS J</u>	
Ron Sabish Jr	35.2	James Riel	16.0
Ron Molitor	27.2	Dan Corbil	21.2
<u>CLASS K</u>		<u>CLASS L</u>	
Ray Schmidt	17.6	Gene Turner	18.4
Art Bartow	14.4	Gary Bartley	9.6
<u>CLASS A LADIES</u>		<u>CLASS B LADIES</u>	
Joan Guetzke	65.1	Rita Boegel	28.0
Lorraine Sternberg	68.5	Jodi Gengler	29.2
<u>CLASS A JUNIORS</u>		<u>CLASS B JUNIORS</u>	
Mark Mauthe	61.3	Heidi Sternberg	48.0
Rick Poppe	49.3	Heather Sternberg	30.4
<u>CLASS C JUNIORS</u>			
1 Missy Fieweger	8.0	2 Jerrad Voigt	8.8

**WHPA FALL MEETING**  
**1:00 PM**  
**SATURDAY**  
**OCTOBER 26, 1991**

One Day Service  
 Sales Incentives  
 Awards, Trophies, Plaques

Manufacturer

**RUDIG OLYMPIC AWARDS**  
 126 S. 2nd Street  
 Milwaukee, WI 53204

Royce DeBow  
 National Sales Manager

(414) 273 2727

**ROYAL WOOD**  
**PLOVER**





# Down And Back

## WHY ME, GOD?

Was it destiny or just dumb luck? Only eight from the championship class of twenty-four qualified for "A" class. How did I make it up here with the big dogs? I can't lift my leg that high.

Randy Rein was predestined: He was the defending champ. Don Kangas is just 'Kangas': There was no other slot for him. John Udelhofen is always "A": He's a 'tough mudder'. (Recall that rainy State Tournament at Marshfield?) Richard Pichler, the new guy, is only nineteen: He was not aware how tough it was so he just did it. Chet Ogiba is a thinker: His determination decided it. Mark Stevens came from too far to be denied into "A": His former titles prevailed. Wally Srenaski was on a natural high: His H.O.F. nomination was on his mind. He entertained no negative thoughts. When Udelhofen knowingly smiled and said, "Hey Jim, you made "A", my practical mind could not accept it. I left the courts and the city fearing the computer would soon find an error.

On the way home I had to stop and have one. Where was Scrima when I needed him? I limited it to one hot fudge.

Sunday found me still on the list, up to #7. Looks like it was really happening. It came to me as I was pitching, getting my butt kicked as it were, that the big dogs were just taking me along for the ride. Class "A" now had its own scribe.

\* \* \* \*

First kneejerk reaction of the new ladies champ was to comb her hair - maybe to up-grade her image. If asked, "Where are you going now, Edie McKinney? - DISNEYLAND?" Her reply could have been, No, but I am going shopping! And Jane's going to buy!

\* \* \* \*

Does being The STATE SENIOR CHAMPION mean anything at all? It sure does to the winner. Why is it then, that we do not keep the record current and available by publishing it in the State Tournament program book?

QUESTION FOR THE MONTH:

What year did senior competition receive official recognition at the State Tournament? And, Can you list the Sr. State Champions in order?

WITH JIM HAUPT

About the only compatible comparison between a baseball pitcher and a horseshoe pitcher is "pitcher". In reality, they throw - we pitch.

The advantage of pitching baseball is they don't let you die out there. Mercifully when a baseball guy shows signs of going onto the dumper, giving up too many hits, walks, and otherwise losing, the manager pulls him out of the game. But not you Bunkie.

Shoes can miss the stake all day and you have to finish the game; finish the class - maybe suffer the mother of all humiliations.

Many of the pitchers of the championship class of the State Tournament at F.O.L. were in that dilemma. Had it been baseball they would have been relieved to see the manager looking to the bull pen.

This it for me this month.

I have been to a lot of tournaments, probably yours this year. I try to write up each one especially if I receive results. But we have room in this NEWSLETTER for a limited amount. Your tournament story is in our hold pile because pages are limited. Pages are limited cuz funds are limited. Subscriptions create funds. If you are sitting on your resubscription or know someone who has dropped, give us a break. This work is hard enough without worrying about limited space. And that's how it is.



COMMENTS, COMMENTS, COMMENTS....  
WE HEAR THIS ALL YEAR LONG ABOUT  
OUR WISCONSIN HORSESHOE PITCHERS  
ASSOCIATION. COME TO THE WHPA  
FALL MEETING, EXPRESS YOUR  
IDEAS AND ASK YOUR QUESTIONS.



the  
national  
horseshoe pitchers  
association

## Game Related Items

### WISCONSIN HORSESHOE PITCHING SUBDISTRIBUTORS

Elaine & Cliff Troullier  
3126 Wagon Wheel Road, Manitowoc, WI 54220  
(414) 682-3197

(The PAUL NEUMANN display)

Category	Won	Lost	Rg Pct	Category	Won	Lost	Rg Pct	Category	Won	Lost	Rg Pct
<b>Champ Girls</b>				<b>Women C</b>				<b>Men D</b>			
Heidi Sternberg	5	1	48.03	Betty Dennison	6	1	44.29	Lloyd Johnson	4	1	43.60
Pam Steinke	5	1	43.90	Michelle Gustafson	6	1	37.14	Richard Brower	3	2	48.40
Heather Sternberg	1	5	26.64	Kathy Hanson	5	2	43.14	Chris Kitti	3	2	44.40
Penny Steinke	1	5	25.17	Ida Hostrup	4	3	42.57	Gerald Weikert	2	3	44.80
<b>Champ Boys</b>				Lynda Turner	3	4	33.71	Jeff Secord	2	3	43.20
Mark Mauthe	4	1	63.20	Mary Lou Endres	2	5	35.43	Ken Jaeger	1	4	42.40
Jason Goldsmith	4	1	58.80	Theresa Donar	2	5	27.43	<b>Men E</b>			
Rick Poppe	3	2	52.00	Renee Sternberg	0	7	24.00	Jerry Voiz	6	1	50.57
Justin Topper	3	2	45.60	<b>Women D</b>				Cliff Troullier	5	2	45.71
David Carley	1	4	23.60	Jane Meier	6	1	43.43	Gene Mason	4	3	46.57
<b>Boys B</b>				Sally Dietzel	6	1	37.14	Norm Kuen	4	3	44.57
Charlie Topper	5	1	23.57	Claretta Hansen	5	2	34.57	Dennis Ambuehl	4	3	43.43
Stuart Bernett	5	1	29.67	Sonia Cook	4	3	35.29	Glenn Bogenschneider	3	4	41.43
Aaron Abel	2	4	17.33	Roxanne Selissen	3	4	30.00	Dick Engmann	2	5	43.71
Gary Volz	0	6	9.33	Cathy Kolpin	2	5	29.14	Warren Knippel	1	6	36.57
<b>Boys C</b>				Rita Boegel	1	6	29.00	<b>Men F</b>			
Chad Voiz	4	1	13.20	Judy Harder	1	6	25.57	John Barden	6	1	41.43
Chris Lovald	3	2	11.60	<b>Women E</b>				Richard Hansen	5	2	47.71
Lee McFarlane	3	2	9.60	Marie Donar	5	0	34.80	Greg Bottlemy	5	2	45.43
Ryan Bogenschneider	3	2	7.20	Janice Harriman	4	1	26.40	Curtis Behrends	4	3	43.14
Paul Fricano	2	3	5.20	Lois Gaulin	3	2	27.60	Jerry Schroeder	3	4	42.86
Josh Boegel	0	5	6.80	Cecelia Trossen	2	3	25.20	Curt Bestul	2	5	40.57
<b>Champ Sr. Men</b>				Theresa David	1	4	14.80	Leon Voigt	2	5	34.57
C.L. Ollerman	4	1	34.00	Carmen Wozniak	0	5	15.20	Leonard Mauthe	1	6	38.00
Felix Kubly	3	2	31.00	<b>Champ Men</b>				<b>Men G</b>			
Art Eglund	3	2	25.00	John Udelhofen	7	0	65.11	Jerry Nordlee	6	1	45.14
Sid Anderson	2	3	30.50	Mark Stevens	5	2	59.38	Lowell Kent	5	2	36.57
Harold Bestul	2	3	25.50	Don Kangas	4	3	65.33	Rick Mahlenbeck	4	3	41.14
Lavern Richard	1	4	30.00	Chet Ogiba	4	3	56.32	John Secord	4	3	34.00
<b>Champ Women</b>				Randy Rein	3	4	57.64	Wayne Vanderhei	3	4	39.14
Edith McKianey	6	1	63.14	Wally Srenaski	3	4	53.02	Jim Blaemers	3	4	37.71
Jane Smith	5	2	67.22	Jim Haupt	2	5	47.01	Wes Taylor	3	4	36.86
Lorraine Sternberg	5	2	50.71	Richard Pichler	1	6	44.12	<b>Men H</b>			
Joan Guetzke	4	3	59.48	<b>Men B</b>				Paul Federer	7	0	43.71
Phyllis Davids	3	4	52.47	Don Hostrup	5	2	57.14	Bill Floryance	5	2	41.71
Gerri Weistad	2	5	51.30	Rick Pritzclaff	4	3	56.57	Michael Hansen	4	3	39.14
Cy Srenaski	2	5	50.27	Clayton Gage	4	3	51.43	Marv Guetzke	4	3	26.86
Sue Helene	1	6	48.35	Marvin Huffman	4	2	48.29	Ralph Marthaler	3	4	38.29
<b>Women B</b>				Gus Schram	3	4	49.43	Gary Schwartz	3	4	32.57
Debbie Bestul	5	2	65.71	Steve Wiegert	3	4	48.86	Ken Olson	2	5	27.71
Shirley Ballwanz	5	2	49.43	Roger Camero	3	4	46.00	<b>Men I</b>			
Elaine Troullier	5	2	53.71	Don Goldsmith	2	5	49.43	Bob Traber	6	1	43.43
Ann Opsteen	4	3	49.43	<b>Men C</b>				Gerald Gramowski	5	2	40.29
Carla McFarlane	3	4	40.86	Vince Jakel	6	1	48.86	Mal Barnitz	4	3	38.86
Sylvia David	3	4	39.71	Brian Repinski	5	2	50.57	Roger Juedes	4	3	36.86
Ev Goshaw	2	5	40.86	Kent Anderson	5	2	50.00	Elmer Bigfire	4	3	32.29
Sylvia Kaiser	1	6	35.43	Norm Mauthe	4	3	45.14	Terry Schrage	4	3	29.14
				Roger Poutanen	3	4	48.86	Steve Stevens	1	6	26.57
				Bill Schaaf	3	4	43.14				
				Larry Barber	2	5	45.71				
				Tony Scrima	0	7	36.57				



Men J			
Ted Rohde	5	2	38.57
Harold Laws	5	2	37.71
Bert Logsdan	5	2	32.29
David Heineck	3	4	33.14
Terry Lokken	3	4	30.57
Ken Davison	3	4	29.43
Dale Heineck	2	5	31.71
Jeff Mauthe	2	5	28.29

Men K			
Jim King	7	2	28.06
Joel Bartley	6	3	35.28
John Rueter Jr.	6	3	34.17
Leroy Wipperfurth	6	3	33.06
Harold Wendorf	6	3	30.29
Jerry Udelhofen	4	5	33.06
John Rueter III	4	5	27.22
Earl Paulson	3	6	30.83

Men L			
Ron Sabish Sr.	6	1	31.14
Richard Conrad	5	2	30.29
Kevin Brekke	5	2	30.00
Terry Sternberg	4	3	24.00
Norm Beckius	3	4	25.71
Rob Struebing	2	5	24.29
Gary Bloedorn	2	5	24.29
Frank Look	1	6	24.00

Men M			
Dave Aho	6	1	37.14
Robert C Anderson	6	1	33.43
Leo Zamzow	5	2	35.71
Don Burmeister	5	2	30.29
Hank Zeisse	3	4	21.43
Russ Burns	1	6	26.29
Ron Ramquist	1	6	24.57
Graig Novinski	1	6	19.14

Men N			
Daniel Jagiowski	7	0	32.57
Harold Patton	5	2	31.43
Ron Kmieciak	4	3	28.29
Willard Smith	4	3	27.14
Mel Cook	3	4	21.71
Dale Lokken	3	4	17.43
Ken Lovans	2	5	23.14
Bill Hildebrand	0	7	10.00

Men O			
Ron Sabish Jr.	5	2	29.71
Don Ebert	5	2	24.29
Don David	5	2	28.29
Tim Bartley	5	2	28.00
John Baegel	3	4	24.29
Wayne Franzen	3	4	20.86
Earl Heineck	2	5	24.57

Men P			
Tom Steinke	7	0	26.00
Jerry Conar	6	1	26.57
Ron Zeppelin	4	3	22.00
Charles Moravec	4	3	17.14
Herb Theisen	3	4	19.43
Lyle Kent	2	5	21.71
Leroy Meyer	1	6	17.71
Rick Horn	1	6	16.86

Men Q			
Ed Ballwanz	7	0	27.14
James (Red) Lovold	5	2	18.57
Jeff Heilgendorf	4	3	22.86
John Jashinsky	4	3	22.29
George Kuffer	4	3	16.29
Jerome Weis	3	4	23.43
Paul Abel	1	6	12.57
Wayne Satonica	0	7	12.29

Men R			
Sal Okon	7	0	23.43
George Siira	6	1	22.57
Dick Schoener	5	2	14.86
Ken Hannula	3	4	17.14
Ralph Zeisse	3	4	9.71
Steve Bartley	2	5	12.86
Larry Secord	2	5	10.00

Men S			
Mel Sorensen	5	0	19.20
Jerry David	3	2	18.40
Karl Wegner	3	2	16.40
Ray Schmidt	3	2	16.00
Weldon Gaulin	1	4	16.80

Men T			
Larry Unz	4	2	6.67
Dick Harriman	3	3	9.33
Bob Mattson	3	3	8.00
Curt Novinski	2	4	7.00

Results/PreLim Top 16 Women			
Lorraine Sternberg	240		68.57%
Jane Smith	220		62.86%
Edith McKinney	216		61.71%
Phyllis Davids	213		60.86%
Gerri Meistad	210		60.00%
Cy Srenoski	201		57.43%
Joan Guetzke	178		50.86%
Sue Helene	170		48.57%

Debby Bestul	168		48.00%
Shirley Ballwanz	167		47.71%
Ann Opsteen	161		46.00%
Sylvia David	156		44.57%
Ev Goshaw	153		43.71%
Elaine Troullier	150		42.86%
Sylvia Kaiser	140		40.00%
Carla McFarlane	116		33.14%

Results/PreLim Top 24 Men			
Udelhofen	177		70.80%
Kangas	159		63.60%
Ogiba	144		57.60%
Stevens	143		57.20%
Pichler	140		56.00%
Rein	131		52.40%
Haupt	129		51.60%
Srenoski	128		51.20%

Huffman	125		50.00%
Weigert	124		49.60%
Goldsmith	124		49.60%
Comero	123		49.20%
Pritzlaff	119		47.60%
Schram	116		46.40%
Hostrup	115		46.00%
Gage	115		46.00%

Scrima	115		46.00%
Poutanen	113		45.20%
Mauthe	113		45.20%
Jakel	112		44.80%
Schaaf	111		44.40%
Anderson	105		42.00%
Repinski	101		40.40%
Barber	95		38.00%

WISCONSIN  
IOWA  
TOURNAMENT

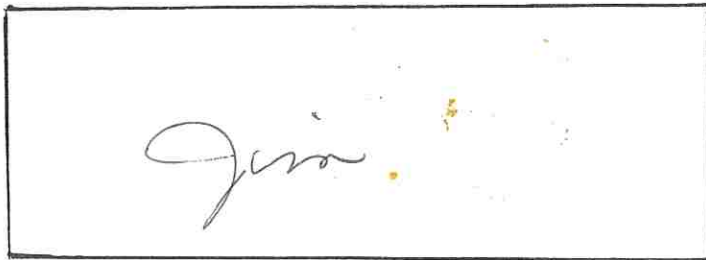
DON KANGAS NEEDS A FEW GOOD PITCHERS.

Currently he is recruiting seven other top pitchers to form an all-Wisconsin team. The guys from Iowa want to meet at the Arena chicken coop for a head to head match. Ten bucks, winner take all, in a one day match, at 11:00 AM, Saturday, November 2, 1991.

Call Kangas if you are interested and Class "A" caliber.

WISCONSIN HORSESHOE NEWSLETTER  
W204 N11912 GOLDENDALE ROAD  
GERMANTOWN, WI 53022

BULK RATE  
U.S. POSTAGE  
**PAID**  
PERMIT NO. 25  
GERMANTOWN, WI  
53022



CHECK OUT THE NEW EXPANDED  
FACILITIES!

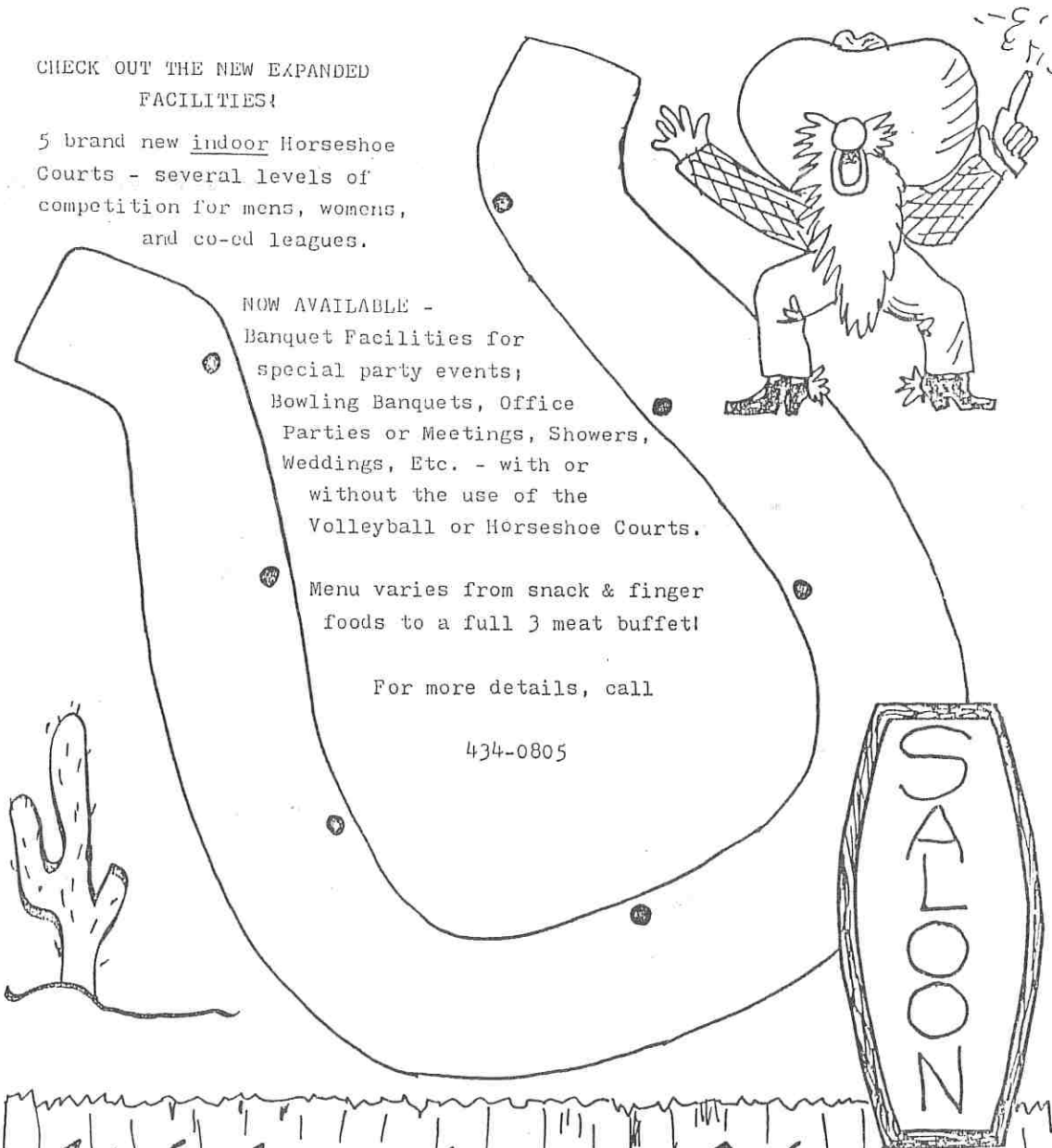
5 brand new indoor Horseshoe  
Courts - several levels of  
competition for mens, womens,  
and co-ed leagues.

NOW AVAILABLE -  
Banquet Facilities for  
special party events;  
Bowling Banquets, Office  
Parties or Meetings, Showers,  
Weddings, Etc. - with or  
without the use of the  
Volleyball or Horseshoe Courts.

Menu varies from snack & finger  
foods to a full 3 meat buffet!

For more details, call

434-0805



Watering Hole  
2107 Welp Ave Green Bay, WI