

World Tournament



Cy Srenaski accepting from Earl Winston, NHPA 1st Vice President

Cy Srenaski, of Green Bay, brought back a world title from the National Horseshoe Pitchers Association in Spearfish, South Dakota. She won the womens Elders Championship with 52.4%. Pitching 66% in the playoff to capture her title, Cy said, "I walked away with that one!"

Other Wisconsin class champions were: mens class S, Terry Sternberg of Richfield pitching 35.0%, seniors class C was won by Harry Johnson of Milwaukee, with 43.6, in the Junior Boys competition, Jeff Mauthe of Platteville took Class C, 44.7% and Rich Pichler from Mondovi, a novice in this game, averaged 46.4% in class E, in the womens division, Jane Smith of Balsam Lake, was victorious in class B with 70.3% and Anna Harms from Eleva prevailed over class B in the Elder's division with 34.2%. Congratulations to all!

106 world pitchers from Wisconsin were listed in our last issue. We missed Wally Sren-

aski of Green Bay, (sorry Wally, 107.) He took a trophy home to set along side of Cy's. There were many Wisconsin trophy winners who placed in their classes. We were unable to record all of these pitchers. To get a full report on this event, read the next issue of NEWSLINE (NHPA magazine). The entire issue will be devoted to the W.T. in Spearfish.

The best news coming out of this W.T. is the taping of the championships for the men and women. It will be shown sometime soon on ESPN, the sports channel of the cable network. Watch your cable listing for this telecast.

The stepladder finals of 40 shoe games for the men was won by Alan Francis, 19, of Missouri, averaging 77.2%. The womens champion is well known to Wisconsin, Phyllis Negaard of Minnesota won the championship with 80.9 % ringers.

Another familiar champion to Wisconsin is Ray Hill. Ray was tied with Red Henton of Iowa after the round-robin for the Senior division. In the playoff for the championship, Hill was down 36-16 but came back to win 40-38. It was a great game. Ray is from Wakefield, Michigan and competes in Wisconsin tournaments.

NATIONAL CONVENTION AT SPEARFISH

The meeting hall at the Holiday Inn although small, was jammed. Three-hundred and twenty-one delegates were checked at the door and a limited amount of spectators. This Monday morning all the action was here.

Reports abounded from various people in charge of all the different arms of the NHPA. Eldon Sarbaugh, mens player representative, had these, worth repeating, comments. "The bad news: parking, the bleachers, the (infamous) red mud, the rip-off prices on food and housing." He suggested a class name on the card and putting the burden of (official) shoe check back to the manufacturer. "The good news: the court conditions, the shade trees, the (close-by) campers, the smooth operation, glad to see the numbers of pitchers, the polite kids, the scorekeeping, the judges, and the "Newsline" is tremendous."

WHPA OFFICERS

PRESIDENT Richard Hansen 3085 S. 76th St. Franksville, WI 53126	SEC.-TREAS. John Secord W6868 Brown Rd. Fond du Lac, WI 54935
---	---

1st VICE-PRES: Jane Smith RR Box 17 Balsam Lake, WI 54810	2nd VICE-PRES Curt Bestul 1412 Sherwin Rd. Eau Claire, WI 54701
---	---

STATE AND NATIONAL MEMBERSHIP TO JOHN SECORD

HALL OF FAME Ann Opsteen 304 Williams St. Combined Locks, WI 54113	SCHOLARSHIP FUND Lorraine Sternberg W206 N13520 Woodside La. Richfield, WI 53076
--	--

NHPA REGIONAL DIRECTORS Jim Haupt 5075 N Elkhart Av. Milwaukee, WI 53217	Jane Smith RR Box 17 Balsam Lake, WI 54810
--	--

WISCONSIN HORSESHOE NEWSLETTER
W204 N11912 Goldendale Rd.
Germantown, WI 53022

EDITOR/PUBLISHER Susie Pritzlaff	STAFF/WRITER Jim Haupt
--	----------------------------------

Published eight times annually @ \$5.00/yr.

THE ULTIMATE SANDBAGGER

Most pitchers go to the World Tournament hoping to pitch their average. With 36 in a class, it usually takes above average pitching to win. Think anyone is capable of pitching twenty (20) percentage points over their normal average? Sounds like a fantasy trip but it really happened to a just-fair pitcher at Spearfish.

Until a few days before the World, Jim Cooper, of Columbus Ohio, had never pitched a fifty percent tournament. His three highest sanctioned tournament average for World entry was not high enough for his satisfaction. He used a league average to raise it a little. The best he could come up with was 44.1%. That percentage placed him in "G" class.

[It was honest. This writer beat him at the Eau Claire World where Cooper pitched only 36% and won just two games.]

Pitching over 61%, Cooper outdistanced all others in the class by ten percent. Jealous moans like, "Sandbagger" came from a few pitchers. Cooper retaliated with a steady stream of ringers. It only served as a turn-on.

Like sixteen others, Cooper moved up to the Championship Prelims. Maybe it was the elite competition that kept him scoring. And could be he just learned to keep the shoe up and his arm out but Cooper actually pitched his best round. Nine games, 360 shoes, and 65.8% was good for 33rd place or top man in "A" class. Overnight there was a dropout in the Championship Class, (Karl VanSant suffered a heart attack.).

Jim Cooper, the 44% guy from "G" class was now pitching for the top spot - World Champion.

Bite your tounge! He's clean. Read these words aloud. COOPER DID NOT HAVE A 50% TOURNAMENT UNTIL A FEW DAYS BEFORE SPEARFISH. He did experience a horseshoe pitcher's dream. He found it at the World!

The Championship round of 31 games was not as kind to Cooper. He bettered his position somewhat but could not maintain the acceleration he earlier displayed.

Way to go Coop!...We are Jealous!



Renee Sternberg, Richfield, 2nd place, Junior Girl's Championship class.

30. JAMES COOPER, OHIO W-6 L-25 57.3%

NATIONAL CONVENTION CONTINUED

Professional presentors from Mississippi and Wyoming took what felt like a month to extol the virtues of their respective areas and why "you-all" should be just-a-frothin' at the mouth looking forward to the 1991 World Tournament. The presentations were nice but overdone. Final vote: Mississippi, 182½ and Wyoming, 134½. Although Douglas, Wyoming was second best this time, we can expect to hear of them again. See you-all in Biloxi, Miss. come 1991...ya-hear?

Former NHPA President, Glenn Portt, introduced a binding resolution that was adopted by a resounding voice vote. The Resolution 1. Reaffirmed that part of the constitution that states, "All legislative power herein granted shall be vested in an assembly of delegates." and 2. "That the so-called laws made by the playing rules committee are hereby declared null and void until submitted to the delegates for lawful action." Portt had pointed out the unconstitutionality of giving the rules committee the power of legislating rules. "Committees exist to recommend." The membership reaffirmed and resumed their right to be the legislators.

President, Dave Loucks, announced the formation of a NHPA Central Statistics Center Floyd Born, Oklahoma, will record all sanctioned tournament results received. Hopefully his computer is compatible with the WHPA version. It is expected to take two years for all charters to respond with all averages

This morning meeting was moving into the afternoon when they got around to the election of officers. Dick Hansen, WHPA President, running for the 5th Vice-President position, kept his words brief saying, "I would not be here if I was not a supporter of the NHPA and that's why I am running, to help improve the NHPA in any way possible. Thank you." The brevity earned lots of applause but not enough votes. Our new 5th Vice-President is Gary Minnik, Arizona and Bev Born of Oklahoma is the new 3rd Vice-President. Earl Winston, Missouri, continues as 1st Vice-President. Then the bomb dropped.

Loucks called for nominations for the presidency. Before anyone could think Loucks said, "I'll make it easy for you. I'll remove my name." Within seconds he repeated it, "I am removing my name from the ballot." The delegates were stunned.

The room began to buzz. In desperation some people were nominated. Most declined before it got out of hand. A recess was called...

The room was frantic. Some delegates went from group to group talking. Others did not know who to talk to. It was suddenly a leaderless group and continued to be for another fifteen minutes.

When Loucks returned to the podium the delegates started a respectful round of applause. And applauded and applauded some more like they wanted an encore. Loucks said, "Nothing at this meeting today caused this decision." Something occurred that I had not anticipated. Two candidates said to me, they would also withdraw. "Please do not misconstrue this as a sign of weakness but after talking with (my wife) Cathy, I will put my name back on the Ballot."

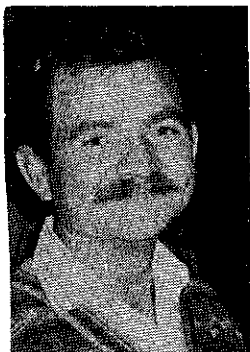
Williams, to make a contest, allowed his name to remain on the Ballot but he would vote for Dave.

Finals: Williams, 38 votes; Dave Loucks, all the rest.

CONGRATULATIONS



Now, five-time World Champion, Phyllis Negaard was inducted into the 1989 NHPA Hall of Fame. Shown here with Walter Ray Williams Jr., who was given the prestigious 1989 Stokes award. This award is given to the person who most promotes the sport of horseshoe pitching in the previous 3 to 5 years.



On my trip to the World Tournament in Spearfish, S.D. I had a chance to attend the state officers meeting on the 20th of July. The meeting was well attended and headed by Vicki Winston. At this meeting, as well as most of the talk around the U.T., was the new NHPA Newslite. The best improvement to the NHPA in the

last year. As I have said before, get yours today.

Mixed pitching was discussed and as of now all but two states now allow 30 foot pitchers in 40 feet classes, in all tournaments except the state tournament. We are not alone.

An idea was introduced to have yet a new class for junior pitchers, age 10 or 12 and under to pitch from still less than 30 feet. Getting the younger pitchers involved more is something that all agreed should be the goal of all NHPA members. The big " ? " is how.

One of the state officers shared what they have started to get more pitchers into their local tournaments. They have a pitcher of the year award based on a point system. High point total wins a trophy and cash award. I will bring this up at the STATE MEETING in Beloit, be there and let me know what you think.

On a sour note, on the day after our return home I received a letter from one of our state pitchers who was at the U.T. The base of the complaint was the red clay used in some of the courts and the scheduling. To the person that wrote the letter, I will pass this along to the NHPA board. The red clay, as I also found out, did not wash out. If you think this is a minor problem just ask my wife. I do however understand their scheduling problem. With almost 1500 pitchers to pitch in all those different classes makes this a major undertaking. For most it was at least a 4 day stay in Spearfish, rather than a normal 2 day stay as in other years. I did not hear of any complaints on this in Spearfish, but there were many on the red clay.

Plan on attending this year's STATE MEETING See you in Beloit.

WHPA President, Dick Hansen

DOWN and BACK

with Jim Haupt

Karl VanSant, world class pitcher from Indiana suffered a heart attack and had to withdraw from competition at Spearfish, A few days later, Ralph Maylahn visited him at the local hospital. VanSant was resting comfortably and about to be sent to the Champaign-Urbana hospital in Illinois.

* * * * *

The first tournament of the indoor season will be September 23 & 24 at Green Bay's Watering Hole. Four additional courts will go in the volley-ball arena. See the ad for details.

* * * * *

Hi folks, we're going to have another push, pull, drag affair. You just push, pull, or drag yourselves to the WHPA meeting in Beloit and you will be pleasantly rewarded. There may be others there with the same ideas as yourself and if you can push pull, and drag together you may get just the deal you want. Watch for the place and time on your State Tournament schedule along with agenda. We've got the best prices and the lowest financing in the state. So lets push, pull, or drag ourselves to the 1989 state meeting.

* * * * *

When ESPN said, "Jump", NHPA said, "How high?" That was the reason for the ladder playoff at Spearfish. The "Bud Light" people sponsored ESPN production costs to the tune of \$75,000 towards an hour long horseshoe show. The NHPA executive council made the decision to change the World format to better suit television viewing. It very well could be an indicator of the future - shorter games.

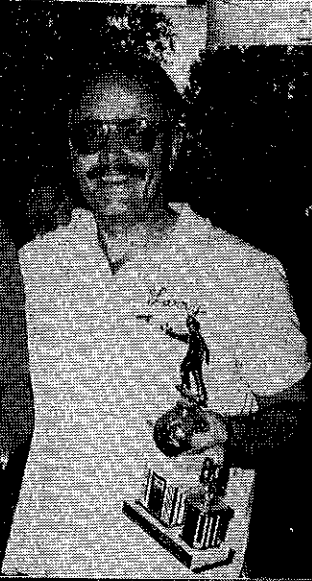
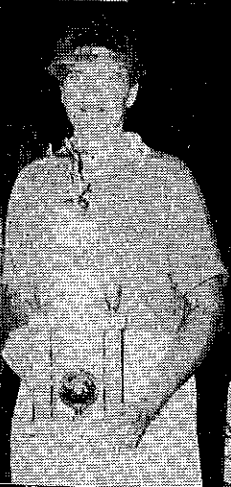
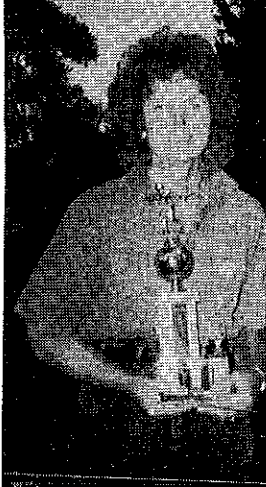
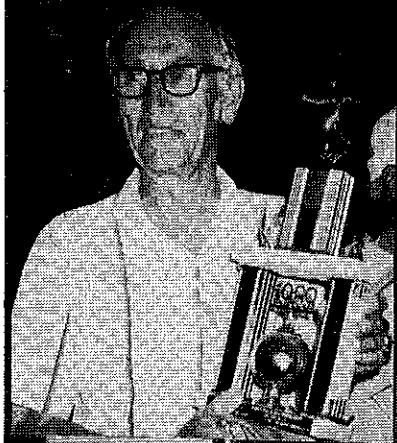
DEADEYE HORSESHOES

CLYDESDALES
N.T.
REGULAR
E-Z GRIP
"NEW" CLYDESDALE DF

W. Courtwright
P.O. Box 742
Fenton, MO 63026
Phone: (314) 376-5222
(314) 677-2200 (8-5)

ALL "DEADEYES" IN VARIOUS WEIGHTS

Welcome TO THE ST. PIERRE-NAPA
WORLD HORSESHOE PITCHING CHAMPIONSHIPS
SPEARFISH, S.D. July 17-30 1989



THE MID-EAST OPEN

The tin roof of Kamp's Courts resounded to a slight rainfall Sunday afternoon - just long enough to let it be known that this is the only covered court facility on the WHPA circuit. Don Kangas, sporting a newly embroidered shirt, returned to his former club in style. The ringers came easy - forty for fifty in one game and in the final match, when he knew it was his, the ringer column showed only five blank spots. That's an amazing 90% - forty-five ringers for fifty shoes. Randy Rein, pitching his personal best tournament average was the main competition. Kangas beat Rein by just one point after Rein gave four points on the last two shoes. Cyrena Srenaski survived a four-way playoff in the ladies class "A". This year's schedule had an evening class, 4:30PM, both Saturday and Sunday which kept more people on the grounds both afternoons. It was a new wrinkle in what continues to be one of the best horseshoe tournaments in the state.

<u>Class A</u>			<u>Class B</u>		
Don Kangas	7-0	73.7	Don Goldsmith	7-0	63.1
Randy Rein	5-2	63.4	Leon Uhl	6-1	57.1
<u>Class C</u>			<u>Class D</u>		
Gene Mason	7-0	53.4	George Schroeder	6-1	43.1
Jeff Lamers	5-2	52.6	Wes Taylor	5-2	48.3
<u>Class E</u>			<u>Class F</u>		
Sidney Hough	6-1	46.6	David Heineck	6-1	39.0
Jack Algiers	6-1	39.1	Ray Schomer	6-1	43.3
<u>Class G</u>			<u>Class H</u>		
Ken Koehn	5-2	35.4	Al Troullier	6-1	33.6
Harold Wendorf	5-2	31.8	Howard Selle	6-1	37.2
Jerry Gossen	5-2	33.6	Joe Felton	6-1	34.6
Leon Fischer	5-2	31.2	<u>Class J</u>		
<u>Class I</u>			Jeff Heilqendorf	5-0	31.9
Ron Sabish	5-2	32.9	Earl Heineck	4-1	30.0
Don Lowis	5-2	22.1	<u>Class L</u>		
<u>Class K</u>			Udell Passehl	7-0	24.3
Leroy Meyer	6-1	27.1	Mel Sorenson	5-2	18.2
Milon Lambrecht	5-2	30.0	<u>Juniors</u>		
<u>Class M</u>			Ken Jaeger Jr.	6-0	52.5
Jerry Vandenberg	5-1	9.2	Jason Goldsmith	4-2	28.0
Terry Seibers	4-2	10.7	<u>Class B Women</u>		
<u>Class A Women</u>			Jane Meier	4-1	37.6
Cy Srenaski	3-2	56.8	Dar Huss	4-1	30.7
Betty Fudala	3-2	54.0	<u>Class A Statistics</u>		
Phyllis Davids	3-2	53.6	John Reitveldt	112-0	
Ann Opsteen	3-2	42.4	(Nobody's perfect)		99.8

EAGLE

When pitchers arrived at the horseshoe park in Eagle and asked for the location of the registration booth, they were directed to a pile of split pieces of lumber. "It went down in the big storm Friday night" they explained. "And over there is the tree that fell on it." There it was, all sawed up and stacked like stove wood. Jane Zeilstra, watching the store while Fred was pitching, said Fred's lucky the computer was at home when the tree limb split. You remember the big tent they always have? It was erected one extra time this year. Steve Koehn is alive and well; tending bar while class A pitched did not look like his regular station at an Eagle tournament. But he did not lose any games popping beers. No entry fee either. Zeilstra seeds the tourney using the state average and his own computerized records. "Subjectively", he described it. Justly proud that he runs one of the three most popular Wisconsin tournaments, (144 entries), He explained why the pitchers keep coming back. "We pay out ten dollars more per class than we take in". Maybe that's why he had to turn away 24 prospective pitchers. He is more interested in the number of pitchers than the top pitchers. Zeilstra has run the Eagle tournament for six years and each year he asks Jane, "Should we do it again?"

6111 MAGNOLIA DRIVE
WISCONSIN RAPIDS, WISCONSIN 54494

OFFICE: (414) 771-3750
HOME: (715) 423-4522

CHRISTOPHER J. KITTI
INVESTMENT PLANNER

 **Charter Investment Services, Inc.**

AFFILIATED WITH CAPITAL FINANCIAL SERVICES, INC.

2323 N. MAYFAIR ROAD SUITE 502
MILWAUKEE, WISCONSIN 53226

MUTUAL FUNDS CORPORATE BONDS

CASH FLOW REAL ESTATE

GOV'T BOND PORTFOLIOS

TAX FREE SECURITIES

IRA'S SEP-IRA'S

One Day Service
Sales Incentives
Awards, Trophies, Plaques

Manufacturer

RUDIG OLYMPIC AWARDS

126 S. 2nd Street
Milwaukee, WI 53204

Royce DeBow
National Sales Manager

(414) 273-2727

JANESVILLE A.R.C.

AT NEW U.A.W. COURTS

Thanks to the efforts of principally, Ron Yttri, the Janesville U.A.W. has new courts. They are now located on the south end of the union parking lot surrounded by a four and one-half foot high fence with plenty of room for the twelve courts. It looks like the same stakes, the same scoring boards, the same sand, and the same guys and gals. (Where, was Dan Bloom?) The weather was the same, HOT. The plat-forms are new and unforgiving. A foot foul feels like stepping off the end of the earth. The center of activity was not center court. The shady spot on the west end has a couple of old trees, the registration booth, most of the people, and all the cold beer. The Sun was high in the sky when the ten man "A" class was about to start. Yttri took a poll - "40 or 50 shoes?" Foolishly most went with 50 shoes. The theory was, "the old guys will wear down in the heat". Nine games, 450 shoes later, the old guys, Harry Price and Sid Anderson were involved in a playoff for first. By this time Sid had his pants rolled up to the knees, as usual, but another look revealed that Sid had been pitchin'-his-tail-off. The revered Mr. Anderson's trousers were split from the belt to the crotch. Looks like Elsie's got a little mendin' to do - unless he's trying to start a new fad.

Only mad dogs and horseshoe pitchers go out in the mid-day sun.

JANESVILLE MOOSE AUG. '89

This was the day the Packers had a rain delay and the PGA was called for rain in nearby Chicago. We lucked out. Janesville was warm and dry. But we had it coming in trade for the cold, cold spring tourney held on these courts in May. Remember? It was hot coffee and long-johns then.

Crafty Bun Carley calls the shots and is said to be the brains behind the Moose tournament. I wonder? He's smart enough to let Shirley and company do the stats. He seeds the tournament using the State overall average coupled with last year's Moose and U.A.W. averages. Sure, Carley keeps score but so do Stirling Martin, Brian Connell, David Carley, and Nate Johnson, to name a few.

This was the fourth area tournament for basically the same workers. Janesville is .., good pitchers. Ask Carley or Yttri what they would do without them.

<u>Class A</u>		<u>Class B</u>	
Carl Turman	65.7	Tony Scrima	53.1
Sid Anderson	62.6	Jerry Volz	46.6
<u>Class C</u>		<u>Class D</u>	
Claire Kersten	45.7	Tim Mageland	37.7
LaVern Edge	46.9	Bud Renley	46.6
<u>Class E</u>		<u>Class F</u>	
LaVern Richards	40.9	Larry Stahl	31.0
Carl Conklin	29.6	Clarence Baker	34.9
<u>Class G</u>		<u>Class H</u>	
Jerome Weis	29.0	Robert Roulette	25.0
Al Davis	26.9	John DeVault	28.0
<u>Class A Women</u>		<u>Class A Juniors</u>	
Lori Simler	47.0	Mark Mauthe	61.0
Rose Meyer	36.0	Jeff Mauthe	61.0

JANESVILLE RESULTS

<u>Class A</u>		<u>Class B</u>	
Sid Anderson	8-1 60.2	Brian Connell	6-1 50.5
Harry Price	8-1 57.5	Bob Jackson	5-2 47.7
<u>Class C</u>		<u>Class D</u>	
Bud Renley	5-1 42.6	LaVern Richard	7-0 46.2
Bob Traber	4-2 33.3	Dan Thompson	6-1 40.8
<u>Class E</u>		<u>Class F</u>	
Clarence Baker	4-3 34.0	Russ Burns	8-1 29.1
Vern Kennedy	" 32.0	Vergil Barnes	6-3 25.8
Harold Laws	" 29.4	<u>Class G</u>	
Stirling Martin	" 28.6	Carl Quinby	5-2 20.7
Tom Leair	" 28.6	Pat Prestige	5-2 19.2
Hank Zeisse	" 25.4	<u>Class H</u>	
Frank Stook	" 24.5	DuWayne Weigelt	5-2 18.5
<u>Class A Women</u>		Bob Roulette	5-2 19.4
Karen Hoff	6-0 50.0	<u>Class A Juniors</u>	
Linda Olander	4-2 38.6	Mark Mauthe	5-0 54.0
Sally Kubash	2-4 35.3	Jeff Mauthe	4-1 46.0

WHY SETTLE FOR SECOND BEST?

THE ORIGINAL  TROPHIES

OVER 27 YEARS OF QUALITY SERVICE

213 N. BROADWAY

Milwaukee, Wisconsin 53202
(414) 224-4999
MANUFACTURERS & ENGRAVERS
One Day Service

MEMBERS OF WHPA

KEWASKUM

BY PAUL NEUMANN

Thanks to those two super hosts, Rob and Joan Struebing and all of their club members for their sincere help in making my stay a most enjoyable one. I was very impressed with the layout of these horseshoe courts, along with the scenic beauty of the complete park with all of its surroundings.

After reading the different names on the entry sheets for this tournament, they could re-name this tourney to the Bartley and Struebing tournament next year.

As in no other sport in which I have played or acted as a spectator, again I had the rare chance of making two new friends, in the person of Dick Schoener and Jane Meier, along with Brian Repinski and his wife Michelle. True, we did not always discuss the game of horseshoes, but never-the-less the conversations were in the lighter vein.

Another interesting factor at this tourney were the two 10 gallon buckets, one for hot water to wash your horseshoes and one for cold water to rinse them.

<u>Class A</u>		<u>Class B</u>	
Don Kangas	7-0 67.4	Norm Kuen	6-1 47.7
Steve Wiegert	5-2 59.4	Mike Wiegert	5-2 42.8
<u>Class C</u>		<u>Class D</u>	
Cliff Troullier	5-0 42.8	Terry Schrage	4-1 41.2
Duey Valle	3-2 46.0	Chas. Christopolis	4-1 35.6
<u>Class E</u>		<u>Class F</u>	
Chuck Goldapske	4-1 40.4	Jeff Hellgendorf	5-2 29.1
Ron Sabish Jr.	3-2 38.0	John Gonoll	5-2 20.8
<u>Class G</u>		<u>Class H</u>	
Dave Klosterman	4-1 32.8	Gib Osmus	5-0 23.6
Dan Ebert	4-1 26.0	Windy Weiss	3-2 28.0
<u>Class I</u>		<u>Class J</u>	
Steve Handel	6-1 22.0	Ralph Struebing	4-1 18.8
Tim Bartley	5-2 23.1	Paul Abel	4-1 18.4
<u>Class K</u>		<u>Class A Women</u>	
Russel Bartley	4-1 18.0	Joan Guetzke	6-1 52.5
Ken Knowles	3-2 13.2	Shirley Ballwanz	6-1 47.4
<u>Class B Women</u>		<u>Class C Women</u>	
Carrie Streubing	5-0 39.6	Judy Uhl	4-1 22.0
Jane Meier	3-2 30.8	Joan Guell	4-1 21.6
<u>Class A Juniors</u>		<u>Class B Juniors</u>	
Frank Fieweger	5-1 19.3	Aaron Abel	5-0 16.5
Cary Sabish	4-2 16.0	Christopher Sabish	4-1 16.0

IN THE PITS

WITH PAUL NEUMANN

Since my last report, I have been in and out of the pits. I seem to have torn some adhesions from the inside of an old scar from an appendectomy. At this writing all seems to be back in place again. (I HOPE). Enough about my physical condition. We have witnessed some interesting tournaments at Goldendale and Combined Locks as well as the klanging of shoes at Kewaskum.

I would like to take my hat off to a young man whom I admire more each time I see him trying to compete in a tournament. That is my buddy from Spencer, Jeff Jakel. Here is a young man who competes in spite of his handicaps. During the Combined Locks tourney, a group of us were a cheering section for this young man urging him on to more ringers and possibly a win. Jeff, I am awarding my "HATS OFF" award in double this time. Wear it with pride.



the national horseshoe pitchers association

Game Related Items

WISCONSIN SUB-DISTRIBUTOR

PAUL NEUMANN

111 Marcella Street
Oconomowoc, WI 53066
(414) 567-7001

NHPA APPROVED



Guaranteed one year
Stainless Steel only
USA Pat. 288-575



R. PETE DONOHO
704 State St.
Redding, CA 96001
Bus. (916) 243-5761

CAL FLIP

\$27.00 pr.
& \$ 3.00 UPS
\$30.00 Total
CA add 6% Tax

Stainless Steel
\$54.50 pr.
& \$ 3.00 UPS
\$57.50 Total
CA add 6% Tax

Made in U.S.A.
Richmond, CA



BURT TROPHIES, INC.

10885 Trophy Lane & E. 29th St.
Marshfield, Wisconsin 54449

Telephone 715 384-5839

Call or write us for all your award needs. Write for free color catalog.



1989 WHPA HALL OF FAME

BY ANN OPSTEEN

The Wisconsin Horseshoe Pitchers Association Hall of Fame inductees for 1989 are Forrest Elmer Mitchell who was the very first Wisconsin State Champion in 1923 and Royce Wrucke, last year's Senior Class champion. Royce has been pitching horseshoes for 70 years and has been a good competitor, having won at least 100 trophies in tournaments in ten states. He will be defending his title at the State Tournament in Beloit.

All Hall of Fame members are invited to attend the induction ceremonies which are scheduled to take place at noon on Sunday, September 3. The Beloit Horseshoe Club courts are located at the "Hitchin' Post", 631 Newark Road (Highway Q) in Beloit.

NHPA NEWSLINE

The National Horseshoe Pitchers Association's NEWSLINE is a 8½" by 11" magazine that has many articles and pictures, also major tournaments and other results. There is a tremendous amount of publicity about our sport throughout the country at this time. The many ideas to enhance the sport of horseshoe pitching are being published in NEWSLINE. We think it is a good format for the people to express their opinions whether we agree with them or not. We urge you to subscribe to this publication, be informed about the various proposals on rule changes.

WHAT'S NEW

BY SUSIE PRITZLAFF

We had a good time at the W.T. this year. The scenery was beautiful in the Black Hills. Next year the W.T. will be at Stone Mountain Park in Georgia July 23 - August 4.

* * * * *

Walter Ray Williams Jr was in Green Bay recently for the LaMode Bowling tournament. While here Williams went to Brownsville for a horseshoe exhibition. One of the TV stations from Milwaukee was there also. The televised segment included an interview with Walter Ray as well as his skill with a horseshoe.

* * * * *

Renee Sternberg of Richfield won a \$200 award for her second place finish in the Junior Girl's Championship class at the W.T. Congratulations Renee!

* * * * *

It was brought up at the National convention that the women's Elder class would prefer a different classification next year. I agree with that!

* * * * *

Would you like to go to Hawaii and Japan to pitch horseshoes? There is a tour leaving California on November 7th. The cost is \$1,599. I have the information if anyone is interested

* * * * *

Horseshoes in Las Vegas! The tournament site has been changed to the Showboat Hotel. According to an article in Pitcher's Platform by Paige Pennington, there will be a bigger area for the courts and the room rate for participants is \$30. The dates for this event are January 7 - 12. For more information, read Newsline.

Try The First Shoe Designed for Horseshoe Pitching



- 100% super soft garment leather for excellent comfort and control.
- Shockproof, with soft midsole and wedge.
- Durable rubber outsole for strength and long wear.
- Heel support for greater strength.
- Terry cloth inside collar padded with urethane foam.
- Removable, replaceable Texon insole.

ALSO MAKES A GREAT WALKING SHOE!

LET CLAY 'N SAND IMPROVE YOUR GAME

Order Your Clay 'N Sand Pitching Shoes Today

Men's 8 9 10 11 12
8-1/2 9-1/2 10-1/2 11-1/2 12-1/2

Women's 6 7 8 9
6-1/2 7-1/2 8-1/2 9-1/2
(Please Print Clearly)

Name _____

Address _____

City _____ State _____ Zip _____

Send check of \$40.00 plus \$5.00 shipping and handling to:

CLAY 'N SAND, Inc. 414/654-6404
6901 Sheridan Rd.
Kenosha, WI 53140

Wisconsin Residents add 5% Sales Tax

CLAY

Clay; A fine grained earth that is pliable when wet and used for making brick, tile and pottery. It has come to be the favored filler for horseshoe courts.

Although clay exists in many areas of Wisconsin, there are only a few places commonly known and exploited by horseshoe buffs. Clays differ to the point where some are better for stopping Horseshoes. Generally, the location of the horseshoe court determines the source of clay for that court. Closest source is usually best. Most clays will respond favorably with proper care and frequent work-up.

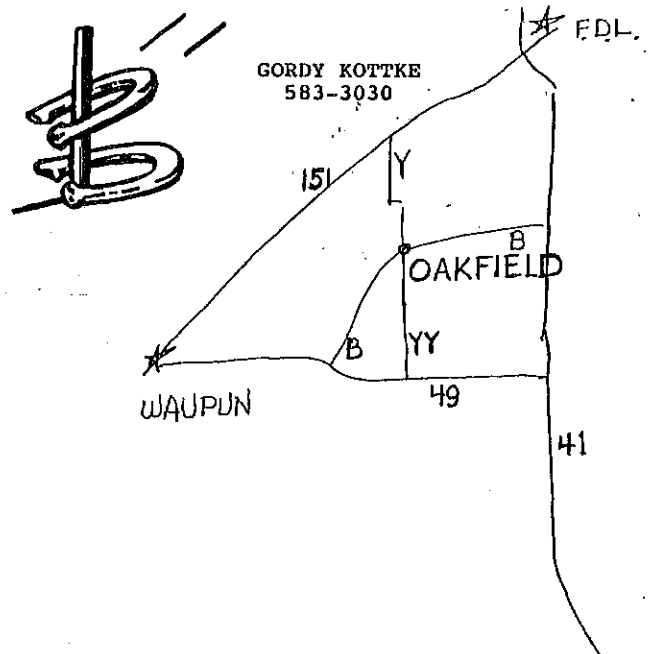
A clay that is in a class by itself is Chenoa clay. Really better than any from Wisconsin, it was used for the Eau Claire World Tournament and now by that club at Carson Park. The Pitchin' Palace still has twenty-four pits filled nine or more inches deep with Chenoa clay. It is really pulverized shale brought back to clay form by adding water. It is easy to work, does not stick, and retains moisture for a long time. It is also expensive, not just for the material but for the transportation costs too. Chenoa, Illinois is three hours south of the state line.

The Pitchin' Palace is for sale. The clay may be available if the next owner is not into horseshoes.

In the town of Oakfield, Wisconsin, there's an old brick factory located on the site of a vast amount of 'brick' clay. This quarry was the source of clay for Fond du Lac, Kewaskum, Brothertown, Fillmore and Goldendale. It's grey-tan in color and takes a tad more water to make it move. Add too much water and it will get sticky: Keep it simply moist and it's hard to beat. Best of all the price is right and its close to home for most Wisconsin clubs.

How to get Oakfield clay:

GORDY KOTTKE of Oakfield owns the Oakfield brick works and uses the buildings for his construction business. Some people prefer the powdered clay found in the old factory itself but there's very little left. Kottke and his backhoe will load a truck (your truck) with fresh clay directly from the pit for a nominal fee. A telephone call to GORDY KOTTKE, 414-583-3030 is all that is necessary. He is a nice fellow, easy to deal with. Do not trespass: Call ahead.



How to get Chenoa clay:

Call or write HARLEY at ValleyView Industries, P.O. Box 128, Cornell, Illinois 61319 or Phone 815-358-2236. It is sold in bulk lots of 50# bags at \$3.00 each.

Coming...The Other Wisconsin Clay: Green Bay's Clay of the North. And more...

BROTHERTOWN OPEN

In many ways horseshoes at Archies' Place is like most tournaments. There were top class A pitchers (2). There were senior pitchers (2). There was a mixed class, (1 lady). And the rest of the folks were the mediocre ones. Problem was "the rest of the folks" was just not enough folks. Archies wins the title of the best little tournament on the schedule. There were 12 pitchers.

Ann Opsteen won class B. Jim Haupt won the class A 'rejects' and Don Kangas beat Ralph Maylahn two out of three to win A. Spectators outnumbered the A class three to one (9 spectators).

In other years the herd of Holsteins in the west pasture have been curious onlookers but this time it seemed they just were not interested, like the rest of the WHPA.

BIG GARAGE SALE AT PITCHIN' PALACE

Bring your club. Bring your trucks. Load it up. This clay is for sale! First \$500 takes it all. Electronic scorekeepers with controls, \$500 each. Stakes set in oak timbers, yours for \$40 per pair, bring your shovel. Need to fence your courts? The counter top and fence is for sale. How about the rubber pit covers? Make a deal with Tom Roanhouse and the 100 bar stools and four tables could be yours. You need clay and stuff: He needs cash.

Call Roanhouse at 414-534-3346. Act now the building may have to be cleaned out at a moments notice. A new owner-tenant is being sought. Another option is to see Roanhouse at the State Tournament in Beloit.

You and Me - We need that Chenoa clay! I'm going to call today.

Dick Hansen, WHPA president is going to move the Hall of Fame display to temporary quarters during the third week of August. He is waiting for a club to suggest a suitable home for the plaques. To date he has had no response to his request for a new home for the Hall of Fame.

Tom Roanhouse is about go into a new business publishing a magazine geared to the restaurateurs of southern Wisconsin and northern Illinois.

Look for Roanhouse to be at Beloit during the State Tournament.

NEWSLINE NEWSLINE NEWSLINE NEWSLINE NEWSLINE

SEND \$12.00 TO: DONNIE ROBERTS, BOX 278, MUNROE FALLS, OH 44262

HEART OF THE VALLEY VFW POST 10544
7TH ANNUAL DOUBLES TEAM
HORSESHOE TOURNAMENT
SEPTEMBER 9 & 10, 1989

AT
KAMPS COVERED COURTS
303 WILLIAMS STREET
COMBINED LOCKS, WI 54113

MENS AND LADIES DIVISIONS
MIXED COUPLES DIVISION
(IF ENOUGH INTEREST)

CASH PRIZES FOR ALL CLASSES
PLEASE SEND RINGER % ON 100 SHOES
ENTRY FEE \$20 PER TEAM
ALL ENTRIES MUST BE RECEIVED
BY AUGUST 31

FOOD AND REFRESHMENTS
AVAILABLE AT COURTS

SEND ENTRIES TO:

DON NAVARRETE
434 PATRICK STREET
COMBINED LOCKS, WI 54113

-OR-

WIL JOHNSON
506 WEST 6TH STREET
KAUKAUNA, WI 54130

*Green Bay Horseshoe Club's
23rd Annual
Sven's Open*

DATE: September 23-24, 1989
ENTRY FEE: \$13
ENTRY DEADLINE: September 11

MAIL TO: Steve Wiegert
1505 Ellis St.
Green Bay, WI 54302
(414) 435-6310

CLASS A MEN
& WOMEN

will pitch 35 points
cancellation.

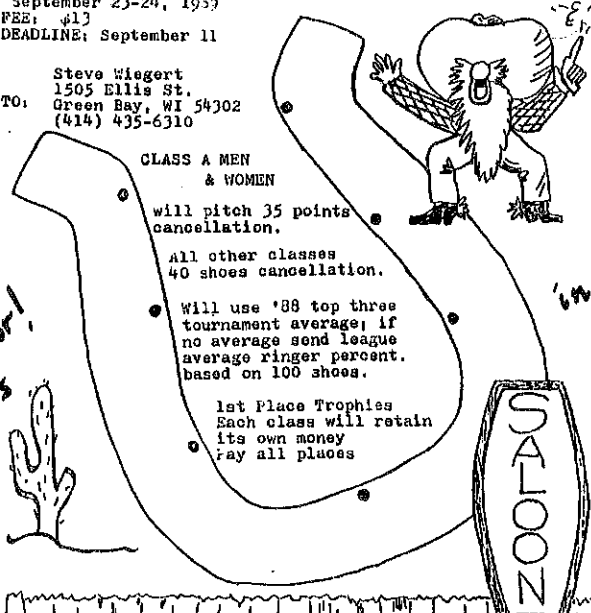
All other classes
40 shoes cancellation.

Will use '88 top three
tournament average; if
no average send league
average ringer percent.
based on 100 shoes.

1st Place Trophies
Each class will retain
its own money
pay all places

*8
indoor!
courts*

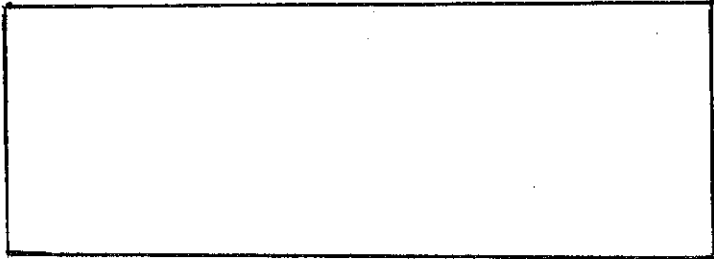
indoor!



Watering Hole
2107 Velp Ave. Green Bay, WI

WISCONSIN HORSESHOE NEWSLETTER
W204 N11912 GOLDENDALE ROAD
GERMANTOWN, WI 53022

BULK RATE
U.S. POSTAGE
PAID
PERMIT NO. 25
GERMANTOWN, WI
53022



CHECK OUT THE NEW EXPANDED
FACILITIES!

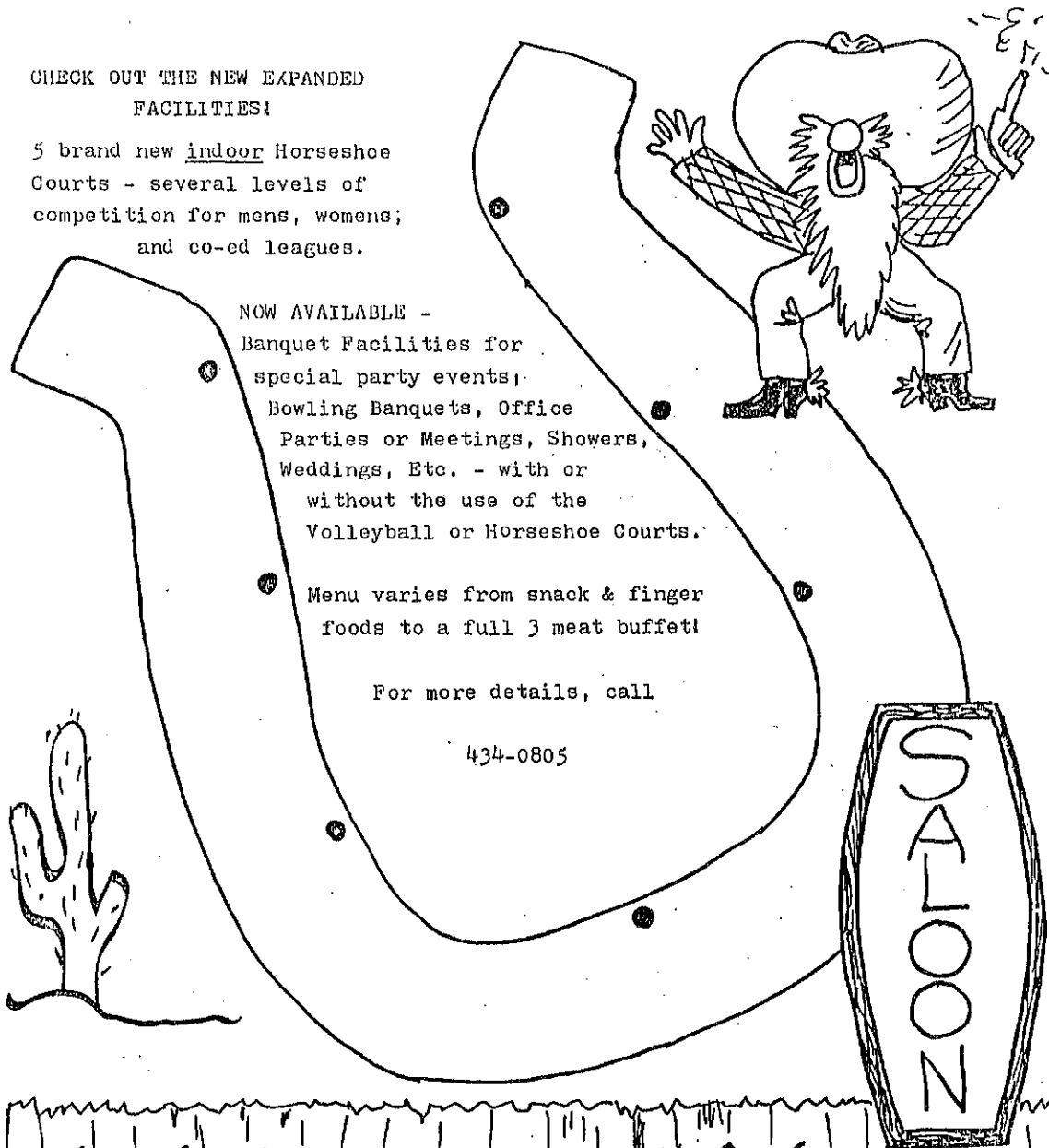
5 brand new indoor Horseshoe
Courts - several levels of
competition for mens, womens,
and co-ed leagues.

NOW AVAILABLE -
Banquet Facilities for
special party events:
Bowling Banquets, Office
Parties or Meetings, Showers,
Weddings, Etc. - with or
without the use of the
Volleyball or Horseshoe Courts.

Menu varies from snack & finger
foods to a full 3 meat buffet!

For more details, call

434-0805



Watering Hole
2107 Velp Ave. Green Bay, WI