

◆ WISCONSIN HORSESHOE NEWSLETTER ◆

AN AWARD WINNING PUBLICATION

OCTOBER 1996

REIN.; WIN #5 - SMITH; 6th - STEINKE; #3

AND THE HOME OF THE BRAVE.....

Don Kangas set it up. He had lost a few and was out of the running but he capped his own tournament with an eighty percent game that defending champ, Randy Rein, could not handle. It threw the men's championship class into a three-way tie.

Mark Mauthe lost the first extra game match to John Udelhofen. Rein remained on the ready, warming up on another court and took the second game from Udelhofen, no problem. Rein won this fifth title while the 'girls,' were into their own play-off game

Last game of regulation play, had Pam Steinke playing Jane Smith. Each had just one "L." Lorraine Sternberg, also with one loss, was playing Edie McKinney, who was pitching better with each game. McKinney had Sternberg down. The attention switched to the Smith - Steinke game. If McKinney would win, either Smith or Steinke would become State Champ.

Sternberg came back to win. Smith bettered Steinke. The two winners tied and went to play-off. Smith came to life. All of her tournament director duties were no longer a concern. Smith won from Sternberg after swapping a series of 'four deads' - each waiting for the other to make that final error.

Jane Smith, Balsam Lake, who first won the State Championship in 1981, repeated for title number six. And, she did it while acting as State Tournament Director - gotta-be a first.

Defending Champion, Penny Steinke, who won the World Junior Girls title and this State title two years running, came into this State tournament with no competition. She was seeded number one into the mixed Juniors. One other girl had entered. Penny's won/loss column in the mixed class were negated in order to keep games separated for the Boys championship competition. Steinke became State Champion by default but it does not detract from her already proven ability.

Wesley Rein pitching a fat 64.6% swept his championship class but the competition bodes well for the future of the Jr Div. of the WHPA.

Clayton Gage, Milltown, won his third State Title pitching a record 82.84% His recent third-in-the-World finish made this title no surprise. It was not without opposition. In second place, Mer Sorensen of DePere somehow lost two games pitching near 75%.

This 1996 State Tournament was one of the best in recent memory. We had special weather made for the game. For the most part, scheduling was close to the appointed hour. Play-offs were efficiently handled. There was some doubt about starting the Championship classes at the rather late hour of 5:00 PM. It was just one more fortunate decision by the host club called, "Close Doesn't Count" but they made many close decisions that all seemed to work out to near perfection. Their people and those they recruited to help appeared to enjoy their presentation.

The Eau Claire Club deserves a share of the applause. The two clubs worked well together - like pulling their oars in unison.

Curt's courts leave little to be desired. Sure, the Carson Park facility is a result of long term full club effort, but it's no secret who the leader is. An appropriate sign should say, "Curt Bestul

It isn't often that opening ceremonies, excluding the Olympics, steal the show but it happened at the State Tournament over Labor Day weekend in Eau Claire, Wisconsin. The 'Close Doesn't Count' Club from north of Highway 8 and co-sponsors of the event, presented an all girl quartet to actually sing the National Anthem - live, center court. Club members, Shari Davison, Claretta Hansen, Edie McKinney, and Gloria Smith were praised for their pleasantly surprising ability.

... During the Sunday presentation ceremonies at the Wisconsin State Tournament, a guest soloist was introduced to sing the National Anthem. As he was being announced, Becky Kangas, took her son by the hand leading him to the microphone. Hastily she exited lest others should think she was the one about to sing.

Without hesitation, Danny Kangas took the 'mike' and instantly sounded off in full voice (little boy squeaky soprano) with the opening words of the "Star Spangled Banner." This familiar little boy, son of Don and Becky, was here mostly to play around while daddy pitched the championship class. Folks could hardly believe what they were seeing. Little Danny was just starting to put words



into sentences. It was said that he became acquainted with the song watching the recent Olympics. At just three years of age, he showed remarkable recall. He didn't miss a click. Showing versatility he even invented some notes of his own

Picture a little guy in miniature baseball togs, rumpled cap, on backwards, standing in the center court opening surrounded entirely by grown-ups, singing his heart out without any other musical accompaniment. At first glance only the flag, and the crowd were visible. Danny Kangas is so small the sound seemed to be coming from the ground he stood on. Small as he is, his presence commanded more attention than the flag itself.

Ending right on tune, he didn't wait for what was the loudest applause of the day but immediately dashed for the gate and back to the sandbox or wherever little kids play.

Everything else that occurred later that afternoon on the Eau Claire horseshoe courts played second fiddle to the Danny Kangas rendition of the National Anthem.

TOURNAMENT DIRECTOR,S MEETING FOLLOWING STATE MT SAT OCT 19 PLOVER

WHPA OFFICERS

PRESIDENT

Ken Jaeger Sr
N3539 Knight Rd
New London, WI 54961
414-982-6287

SEC-TREAS

John Secord
W6868 Brown Rd
Fond du Lac, WI 54937
414-922-0080

1ST VICE PRESIDENT

Jane Smith
1481 180th Av
Balsam Lake, WI 54810
715-485-3057

2ND VICE PRESIDENT

Terry Sternberg
W206 N13520 Woodside La
Richfield, WI 53076
414-677-3300

HALL OF FAME

Susie Pritzlaff
W204 N11912 Goldendale RD
Germantown, WI 53022
414-628-1484

SCHOLARSHIP FUND & JUNIOR PROGRAM DIR

Lorraine Sternberg
W206 N13520 Woodside La
Richfield, WI 53076
414-677-3300

NHPA POSITIONS:

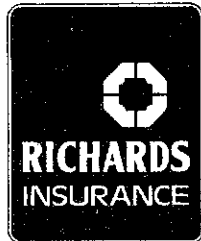
REGIONAL DIRECTORS

Jim Haupt
5075 N Elkhart Av
Milw., WI 53217
414-964-2735
Jane Smith
(add. above)
Ken Jaeger
(add. above)

NHPA SEC-TREAS

Richard Hansen
3085 S 76th St
Franksville, WI 53126
414-835-9108

DICK BURG
Agent



46 E. JACKSON STREET ■ P.O. BOX 26 ■ HARTFORD, WI 53027
BUSINESS PHONE 414/673-4440 ■ RESIDENCE PHONE 414/673-6979
FAX 414/673-3124

CANCELED EVENTS

We have recently lost two indoor horseshoe houses, the JackPine at Friendship, and the Soccer World courts in Madison resulting in cancelation of two scheduled and sanctioned tournaments.

Randy Rein has canceled his 'Octoberfest' event. Francis Schalk is in mourning. He had a full schedule planned for the JackPine. Schalk believes this year would have established the courts as a regular stop on the horseshoe tour.

Ron Lingard and Julian Tijerina had the unpleasant experience of removing the clay from Soccer World. The loss of courts cancels the Lingard-Carlin November event.

JackPine to become a motel: Soccer World wants batting cages.

PRESIDENT'S CORNER

My congratulations to the Close Doesn't Count League for a fine job of hosting the 1996 State Tournament and to the Eau Claire Club for their cooperation and facility.

If you didn't stick around for the Championship groups you missed one heck of a show by all participants. The Jr Boys, in particular, were pitching 20 to 30 percent over their averages. I think I was more excited about how well they were doing than they were - what a show.

[I can go back a ways with the Jr program; I recall when Howie Voiles made the first appeal for the Jr Scholarship Fund in Mountain. and someone donated \$50.]

Congratulations to all the State Tournament. champions. Double the ovation to Penny Steinke for retaining her World Jr Girls Championship title averaging over 70%.

Yes, this was a very special year for me. A great honor it was to conduct the Hall of Fame ceremonies. Congratulations to Howie Voiles and Jim Haupt on their induction and thank you for your contribution to the game of horseshoes.

Open tournaments, this year, featured 'different' formats - mixed, 4 in a class, and handicapped. The intent was to find out what everybody wanted and what would work. There will be a special Tournament Directors meeting following the Fall business meeting. Hope to see all Tournament Directors.

At the 1996 World Convention;
*Dick Hansen was elected NHPA Sec.- Treas.,
*Greater Morgantown West VA got the 1998 World T. bid.
*The state of Georgia, once again was on the agenda. They owe the NHPA \$28,000 but have refused to pay. It was decided to give them a Dec. 31, 1996 deadline for either a \$10,000 settlement or revocation of their charter -equal to separation from the NHPA.

*Paul Stewart of North Carolina was appointed by Dave Loucks to 5th VP. One year is remaining on term.

See you at the Fall Meeting. I'm tired now.

Your Pres., Ken Jaeger

Yah summer is gone and Fall is here.

Fall., Hunting Season., My second thrill!

WHAT'S LEFT IN 1996

OCT 12-13 ARENA FALL SINGLES \$15

Norm Mauthe 865 Eastman St Platteville, WI 53818

608-348-9697 NHPA #28-96-034 D/L 9-28

OCT 19 FALL MEETING at Royal Wood, Plover 1:00 PM

Fall Mt fun doubles tournamenmt starts 8:15 AM no sign-up

Show-up early if you want to play. Limited to first 24

OCT 20 TIP'S DOUBLES SERIES #1 11:00 AM start

This is the first of Tip Wipperfurth's indoor doubles series at the Arena Sandbar. Must Call 608-849-4655 Limited; unsanctioned

NOV 10 SONNY'S DOUBLES at Arena 110% Limit \$30/team

Sonny Cockroft 405 Wall St Mazomanie, WI 53560

608-795-2573 Limited NHPA #28-96-036 D/L 10-26

DEC 14-15 SANTA'S SINGLES;-Arena \$15 early or \$17 at cts

Ron Berg RR1 Bx 86 Barnveld, WI 53507

608-924-5574 Limited to 96 NHPA #28-96-037 D/L 11-30

PLATTEVILLE AUGUST #28-96-025

by Norm Mauthe

- A Carolyn Stittleburg 58.6; Mark Mauthe 62.9; John Crook 43.14
- B Harold Brockway 49.3 Pat Spahn 47.0; Teresa Donar 44.6
- C Arnie Walton 47.7; Chris Dahl 43.7; Hank Zeisse 40.0
- D Carl Gilbertson 49.14; Jeff Mauthe 44.3; John Carlin 35.4
- E Bob Mitchell 41.7; John Aeschlimann 33.4; Don Burmeister 26.6
- F John Bentz 28.3; Vernon Rosenbery 28.0; Bob Novinski 24.3
- Jr Chad Parchem 13.2; Drew Parchem 11.8

Fifty pitchers played all their games on Saturday in perfect weather. Temperatures were in the low 80's and there was no wind.

Carolyn Stittleburg of Waunakee won her first Platteville Championship pitching a ringers-only format limited to class A. Duffy Brockway, Seneca, and Pat Spahn of Wausau got into it with a play-off. Duffy took it pitching a near 50% tournament. Carl Gilbertson, also near 50%, is improving with age.

Cash prizes were generous due to the Platteville Country Kitchen extra \$150 and the high ringer game certificates -

DOWN AND BACK

by Jim Haupt

Ralph Maylahn, Genesee Depot pitcher who finished fifth in the Gillette World pitching with the Elders has gone back to 40 feet. In spite of his 73% average he believes he has taken the 30 foot advantage as far as it can go. It should be evident he also expects to regain the respect of some 40 footers who have been reluctant to accept short distance pitchers.

Maylahn pitched the 30 foot distance for five years experimenting with the three-quarter turn, the flip, and the one and a quarter. His first 40 ft outing at the August tournament in Beloit found him in the middle of the standings but he did manage to give the tournament leader a one game loss pitching 60%.

Maylahn is the only man of record who has held both the open men's championship and the senior championship (short distance) titles in this state.

DOWN AND BACK

Consider this my bread and butter note; Thanks to all WHPA members, I really appreciate the Hall of Fame award. Basking in my glory, I read the entire inscription one more time. Down near the end it says, "presented by Wisconsin Horseshoe Pitchers Association 1996.." Pitchers? OK OK, I suppose I've got it coming. And yes, it has already become a collector's item. Tanks a heap to all youse WHPA pitchers,

DOWN AND BACK

The State Horseshoe Championship of the Wisconsin Order of the Moose was played in August at the Muskego lodge. Earl Paulson became the 1996 State Champion by giving all his opponents a loss. Paulson admitted the championship class was not the toughest but he had to overcome fellow Moose members Tony Scrima and Wayne Vanderhei, so it was no cakewalk either.

DOWN AND BACK

Wes Taylor of West Bend won a Gold Medal in the Wisconsin Sr Olympic Horseshoe tournament conducted at Washington Park in Milwaukee. It qualifies him to enter the National Games to be held in Tuscon, Arizona next May. Taylor was also ranked as the overall #1 forty foot pitcher of the Olympic event.

BELOIT IN AUGUST #28-96-024

Beloit, where they do a tournament in April, May, August, and September, has become the new hub of horseshoes in Wisconsin.


In August the Southern Wisconsin Open goes head to head with the Mountain Open, traditionally, the largest entry next to the State Tournament. Just as Mountain serves the Upper Peninsula, Beloit gives opportunity to northern Illinois.

It's a win-win situation. Neither event suffers because of the other. They are four hours apart - a prime opportunity for twin dates.

Swen Bowman started something that makes Mountain the center of horseshoes in the North. Earl Paulson, together with the Beloit Club has done the job in the South.

Tradition, that is tough to buck, keeps the Mountain tournament unsanctioned. It has become a once a year haven for casual pitchers. The Beloit Club operates as an NHPA sanctioned unit. It follows that their Southern Wisconsin Open hosted near 100 sanctioned pitchers this time.


- A Mark Mauthe 60.4; Penny Steinke 60.7; Carolyn Stittleburg 58.6
- B Bob Runnaas 46.1; Tony Scrima 53.6; Ron Yttri 49.3
- C Arnie Walton 52.2; Craig Zuehke 44.4; Harvey Bilz 41.9
- D Dalton Simmons 45.7; Jon Mease 30.9; Ron Derry 40.8
- E Tom Costa Sr 42.8; Kerry Morris 39.4; Terry Hlavac 32.1
- F Red Ferguson 36.4 Bill Matey 31.5; Pam Woodard 32.0
- G Chuck Herman 28.4; Bob Fritz 25.6; Richard Burg 25.6
- H Carl Schliem 29.3; Ron Knutson 29.0; Ed Wheeler 33.2
- I Rob Pankhurst 28.6; Jerome Weis 28.2; Wayne Fry 27.5
- J Tracy Pankhurst 27.8; Bud Wicks 23.3; Debbie Kijek 23.0
- K Rich Contreras 17.5; Audrey Hendrickson 19.3; Rick Swick 12.5
- Jr Chuck Costa 17.5; Josh Schliem 8.8; Heidi Pheiffer 7.1



**WISCONSIN HORSESHOE
PITCHING SUBDISTRIBUTORS**

GAME RELATED ITEMS

Elaine & Cliff Troullier
3126 Wagon Wheel Road, Manitowoc, WI 54220
(414) 682-3197



"Home of the 7-1/2 lb. Pizza"

**Frank & Barb's
COUNTRY INN**

Downtown Le Roy

Featuring the Country Inn's Famous Pizza — Custom Built To Your Tastes

- Sandwiches • Char Broiled Steaks
- Soups Daily • Friday Fish Fry

FRANK & BARB DOHRWARDT — Proprietors Closed Tuesday
(414) 387-3311 - Mayville (414) 583-4534 - Oakfield 1-800-201-4534

WISCONSIN HORSESHOE NEWSLETTER
Susie Pritzlaff Pub/Ed \$7/yr 8 issues Jim Haupt writer

STATE DOUBLES TOURNAMENT

A State Doubles Tournament could happen in 1997. We have got the time, we have the place, we need a small group of willing people to accept the job of directorship.

The time is April 27th, the last Sunday in April, the day after the Club-Team tournament. The place is what we used to call "Telfer" but is now Edwards Sport Center in Beloit. Plenty of courts - same set-up as the Club-Team.

Prospective directors would be concerned with the entry, the schedule, the stats, and the results. The Beloit Club will handle concessions and court setup.

Last issue, State Doubles appeared on the Indoor Calendar with a proposed percentage cap set by the writer. One interested person took issue with the cap saying a State contest should be free of limitatoinis. What do you think?

This idea has been in the works for six months but no takers have come forward.Bring your ideas to the Fall Meeting.

FIELDHOUSE OPEN

New courts deserve a new tournament and a new format. Len Meistad and Ron Willms built the new courts. Dick Hansen was the contact man. Together they hosted the tournament.

The top classes, A and B were combined but separate. Two entrants who carried big averages were set into 'A.' Another six were relegated into 'B' but the directors combined their play to make an 8-player class - creative scheduling.

It's a seven court layout neatly filled with the finest sand available. Full length concrete strip walkways cut the grass plot connecting the north-south pits.

The Fieldhouse pub and eatery caters to active outdoor types with a couple of volleyball courts and extensive outdoor patio.

The new NHPA Sec-Treas, Dick Hansen, engaged the facilities for an outdoor retirement party in September.

- A Lorraine Sternberg 81.1; Don Kangas 68.6
- B Carolyn Stittleburg 64.3; Gerri Meistad 56.4; Rick Pritzlaff
- C Maria Willms 47.6; Harry Nelson 44.4; Dick Hansen 50.4
- D Ron Willms 37.2; Hank Zeisse 41.6; Carla McFarlane 40.4
- E Mike McDonald 40.8; Red Ferguson 30.8; Rich Conrad 31.2
- F Linda Aber 42.4; Ed Wheeler 27.2; Tom Steinke 28.0
- G Ralph Zeisse 20.4; Ray Lopez 18.8; Laurette Samain 11.2

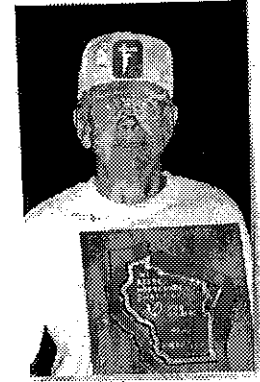
HEART OF THE VALLEY V.F.W. DOUBLES

- A Roger & Jerry Poutanen 42.7; Phyl Davids & Rox Sellison 40.8
- B Steve Troullier & Ted Anderson 31.6; Tom & Jeff Lamers 37.6
- C W Srenaski & O Wesley 37.5; J Algiers & Earl Wohlrabe 37.9
- D Joe & Kim Felton 31.6; Richard Baeton & John Quandt 25.5
- E Maurice Lamers & Moose Meyer 33.0; Ron Miller & Kendall Kuehl 31.0
- F Rita and John Boegel 26.2; Harold and Edward Wendorf 32.7
- G Dick Mulloy & Wayne Rose 21.8; Clay Poquette & J Vanderberg 17.5

This tournament, although unsanctioned, continues to support the WHPA and organized horseshoes through their voluntary participation as a WHPA scheduled tournament. The V.F.W. Horseshoe Committee has clearly demonstrated how to run a bona-fide, good time tournament.



TIM MAULIE



CLAYTON GAGE



RICH PICHLER



TONY SCRIMA



TOM MODL



MIKE HANSEN



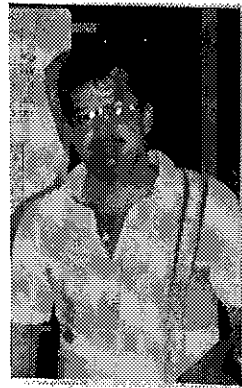
CURT BESTUI



CARL GILBERTSON

CHAMPIONSHIP MEN

Randy Rein	Mosinee	8-2	76.53
John Udelhofen	Baneveld	8-3	68.23
Mark Mauthe	Platteville	7-3	61.34
Larry Barber	Rhineland	6-3	57.88
Don Kangas	Colgate	5-4	66.79
John Barden	Waunakee	5-4	64.52
Rick Poppe	Benoit	3-6	58.11
Tim Maule	Independence	3-6	56.72
Gus Schram	Ringle	2-7	58.02
Mark Stevens	Marengo	0-9	43.49



RANDY REIN

CLASS A MEN

Tim Maule	Independence	6-1	64.85
John Koepf III	Pewaukee	5-2	59.43
Dave Schorbahn	Independence	5-2	52.58
Buck Huffman	Broadhead	4-3	62.86
Vince Jakel	Spencer	3-4	53.71
Jim Larson	Madison	2-5	58.86
Steve Wiegert	Green Bay	2-5	53.17
Ron Brockway	Onalaska	1-6	29.14

CLASS B MEN

Tony Scrima	Waukesha	6-1	54.00
Roger Comero	Cochrane	5-2	55.42
Norm Mauthe	Platteville	5-2	52.28
Don Hostrup	Frederic	5-2	46.28
Ron Brownell	Mondovi	3-4	46.00
Bill Schaaf	Chetek	2-5	39.71
Ken Heinritz	Meno Falls	1-6	41.14
Jeff Secord	Fond du Lac	1-6	37.42

CLASS C MEN

John Crook	Spring Green	6-1	49.14
Harry Nelson	Kenosha	5-2	50.86
Roger Hargrave	Cameron	4-3	46.57
Jim Haupt	Milwaukee	4-3	41.43
Dick Hansen	Franksville	3-4	44.63
Ken Olson	Platteville	3-4	40.57
Jerry Volz	Wis Dells	2-5	46.29
Lloyd Johnson	Kenosha	1-6	42.94

CLASS D MEN

Tom Modl	Menomonie	6-1	51.14
Greg Hehling	Merrill	5-2	48.57
Harold Brockway	Seneca	5-2	47.14
Jerry Schroeder	Janesville	4-3	40.29
Ted Rohde	LaCrosse	3-4	42.00
John Secord	Fond du Lac	2-5	38.29
Ken Jaeger Sr	New London	2-5	36.86
Cliff Troullier	Manitowoc	1-6	30.86

CLASS E MEN

Mike Hansen	Tomahawk	7-0	45.34
Tip Wipperfurth	Waunakee	5-2	43.22
Bernard Carley	Edgerton	4-3	49.71
Frank Dunn	Platteville	4-3	46.61
Lowell Kent	Mondovi	4-3	40.29
Wayne Vanderhei	Muskego	2-5	44.86
Greg Bottleny	Owen	2-5	35.14
Ron Lindgard	Madison		Forfeit

CLASS F MEN

Arnie Walton	Lodi	7-0	54.86
Lee Mathson	Eau Claire	5-2	46.29
Don Goldsmith	Janesville	5-2	43.14
Gene Mason	Appleton	4-3	40.57
Jukian Tijerina	Madison	3-4	41.43
Fred Decorah	Baraboo	3-4	38.29
Earl Paulson	Beloit	1-6	30.57
Dave Semington	Eleva	0-7	33.71

CLASS G MEN

Rich Pichler	Mondovi	8-2	40.20
Ron Wilcziek	Whitehall	5-3	39.75
David Paul	Baldwin	5-3	39.75
Russell Burns	Janesville	5-3	37.50
Ken Kosky	Scofield	4-3	30.57
John Brophy	Galesville	3-4	35.71
George Eckstrom	Gilman	1-6	28.00

CLASS H MEN

Bill Hagen	Salem	7-0	41.14
Terry Sternberg	Richfield	6-1	41.14
Jim Heim	Holmen	4-3	38.00
Jeff Kunz	Eau Claire	3-4	34.86
John Carlin	Madison	3-4	33.71
Harold Laws	Beloit	2-5	27.71
Paul Federer	Sun Prairie	2-5	26.00
Rich Conrad	Pewaukee	1-6	26.57

CLASS I MEN

Paul Wilson	Janesville	6-2	43.00
Randy Hansen	Altoona	5-3	38.00
Kerry Morris	Jonson Crk	4-3	38.29
Galen Kozel	Mukwanago	4-3	36.00
Bruce McLinn	Clinton	4-3	33.43
Duane Gossen	Monroe	3-4	30.86
Larry Danielson	Roberts	2-5	38.00
Jeff Mauthe	Platteville	1-6	18.86

CLASS J MEN

Steve Stevens	Marengo	7-1	39.25
Tom Costa Sr	West Bend	5-2	38.50
Dave Aho	Grafton	4-3	39.14
Ken Davison	Meno Falls	4-3	36.72
John Gregorich	Waunakee	3-4	41.43
Jason Goldsmith	Janesville	3-4	29.10
Ed Haak	Wausau	1-6	33.43
Bill Matey	Appleton	1-6	30.5

CLASS K MEN

Bob Kallstrom	Arkansaw	6-2	32.15
Gary Rackow	Browntown	5-3	31.00
Jim Ganther	Eau Claire	4-3	35.14
Jerry Udelhofen	Platteville	4-3	32.29
Joe Zoromskis	Kenosha	4-3	30.57
Don Burmeister	Brown Deer	4-3	30.00
William Spahn	Lodi	2-5	26.57
Gil Matzdorf	Sheboygan	0-7	15.43



BILL HAGEN



PAUL WILSON



BOB KALLSTROM

WANTED - VIDEO FOOTAGE OF DANNY
CONTACT DON KANGAS, 414-628-9080

CHAMPIONSHIP WOMEN

Jane Smith	Balsam Lake	9-1	72.35
Lorraine Sternberg	Richfield	8-2	73.73
Pam Steinke	Waukesha	7-2	67.09
Edie McKinney	Luck	6-3	67.12
Phyllis Davids	De Pere	4-5	56.98
Sue Helene	Webster	4-5	56.35
Carolyn Stittleburg	Waunakee	3-6	59.52
Ida Hostrup	Frederic	3-6	50.00
Jane Meier	Fond du Lac	1-8	46.08

CLASS A WOMEN

Ida Hostrup	Frederic	6-1	56.70
Ev Goshaw	Eau Claire	5-2	51.43
Teresa Donar	Cuba City	5-2	45.14
Judi Hayden	Mondovi	4-3	57.86
Heather Sternberg	Richfield	4-3	46.00
Heidi Sternberg	Richfield	3-4	47.43
Elaine Troullier	Manitowoc	1-6	40.57
Shari Davison	Centuria	0-7	39.14

CLASS B WOMEN

Kathy Hanson	Boyceville	7-1	45.25
Gert Wilcziek	Whitehall	6-2	50.25
Gracie Reed	Balsam Lake	5-2	42.57
Gloria Smith	Milltown	3-4	38.29
Lori Matzdorf	Sheboygan	3-4	38.29
Sylvia David	Auburndale	3-4	34.00
Carla McFarlane	Wind Lake	2-5	32.86
Michelle Gustafson	Balsam L.	0-7	26.27

CLASS C WOMEN

Clarretta Hansen	Milltown	5-0	46.00
Sonia Cook	Stratford	3-2	36.00
JoAnne Alling	Clear Lake	3-2	32.00
Karin Wistrom	Dresser	2-3	34.00
Cecelia Trossen	Suring	1-4	29.60
Marie Donar	Dickeyville	1-4	26.80

CLASS D WOMEN

Carmen Wozniak	Suring	5-0	29.60
Donna Zins	Centuria	4-1	37.60
Barbara Baxter	Briggsville	2-3	24.40
Debbie Trossen	Mountain	2-3	22.80
Judy Harder	Balsam Lake	1-4	20.00
Jill Harings	Luck	1-4	18.40

CHAMPIONSHIP ELDERS

Clayton Gage	Milltown	6-0	82.84
Merwyn Sorensen	DePere	4-2	74.55
Curt Bestul	Eau Claire	2-4	38.14
Ed Rupno	Fremont	0-6	35.83

CLASS A ELDERS

Curt Bestul	Eau Claire	5-1	41.33
Merrill Semingson	Eleva	4-2	43.33
Harry McCartney	Eau Claire	3-2	37.20
Bud Kuhnert	Fall Creek	2-3	32.80
Bill Hildebrand	Rosholt	1-4	38.80
Hank Zeisse	Franklin	1-4	36.40

CLASS B ELDERS

Carl Gilbertson	Highland	6-1	48.29
George Draeger	Marshfield	5-2	38.86
Mel Sorensen	Green Lake	2-4	37.00
LeRoy Meyer	Appleton	0-6	16.3



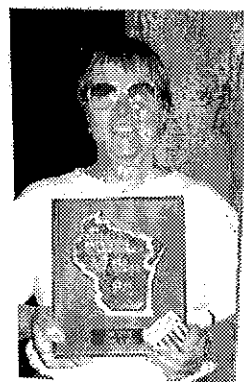
JANE SMITH



IDA HOSTRUP



KATHY HANSON



CLARRETTA HANSEN

CHAMPIONSHIP JUNIORS

Penny Steinke	Waukesha		63.18
Wesley Rein	Mosinee	4-0	64.63
Barrent Dahl	Trempealeau	3-1	53.42
Dustin Dahl	Trempealeau	2-2	43.99
Erik Bottlemy	Owen	1-3	50.79
Cary Richter	Rosholt	0-4	43.89

CLASS A JUNIORS

Barrent Dahl	Trempealeau	5-1	50.60
Jesse Zeppelin	Stratford	4-2	35.33
Tom Costa Jr	West Bend	2-4	24.00
Paul Fricano	Jackson	1-5	24.00

CLASS B JUNIORS

Nicole Riehle	Auburndale	5-0	26.40
Paul Iverson	Balsam Lake	3-2	15.60
Mike Schaaf	Chetek	3-2	3.87
Ricky Schaaf	Chetek	2-3	11.60
Dusty Schaaf	Chetek	2-3	6.97
Chad Hunter	Balsam Lake	0-5	2.40

s

CLASS L MEN

Tom Sreinke	Waukesha	6-2	31.00
Ray Groskinsky	Adams	6-3	30.00
Bob Fritz	Watertown	5-3	27.72
Warren Knippel	Waukesha	4-3	29.14
Rob Struebing	Campbellsport	3-4	27.71
Chuck Herman	Eagle	2-5	27.68
Francis Schalk	Oxford	2-5	26.00
DeWayne Hazen	Eau Claire	2-5	22.57

CLASS M MEN

Scott Kater	Appleton	6-2	27.25
Dennis Kieser	Menomonie	5-3	31.00
Ray Mallo	Gilman	4-3	31.42
Dean Baxter	Briggsville	4-3	27.72
Rowen Swick	Beloit	4-3	26.85
Ron Zeppelin	Stratford	2-5	25.14
Guy Flemming	Mukwanago	2-5	21.14
Frank Look	Oak Creek	2-5	20.57

CLASS N MEN

Carl Schliem	Beloit	7-1	34.50
Dan David	Auburndale	6-2	31.75
Roger Olson	Westby	4-3	34.86
Tom Dudenhoefer	Oxford	3-4	24.86
Mel Cook	Stratford	3-4	21.14
Sal Okon	Lowell	2-5	30.86
Rob Rehm	Chip Falls	2-5	27.43
Wayne Franzen	Franklin	2-5	17.14

CLASS O MEN

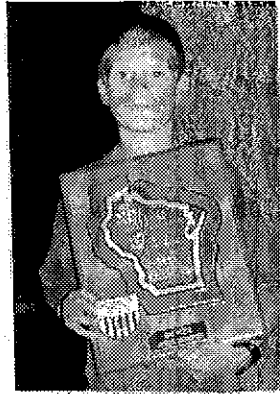
Ivan Ruzic	Fennimore	7-2	27.53
Bob Novinski	Mineral Pt	5-3	28.50
Frank Dohrwardt	Lomira	5-3	25.74
Ron Pierson	River Falls	4-3	20.86
Gerald Dahl	Trempealeau	3-4	27.71
Jerome Weis	Janesville	3-4	25.42
Don Peroutka	Kenosha	0-7	33.14

CLASS P MEN

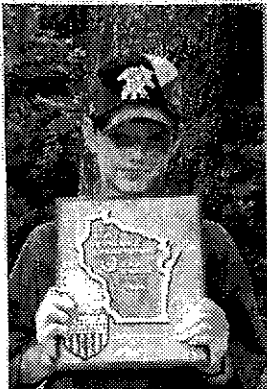
Ken Wood	Comb Locks	5-0	23.60
Merlin Ludwig	Medford	4-1	19.60
Curt Novinski	Mineral Pt	3-2	15.60
Donald Peterson	Sheboygan	2-3	13.20
Kip Kuester	West Bend	1-4	4.00



PENNY STEINKE



WESLEY REIN



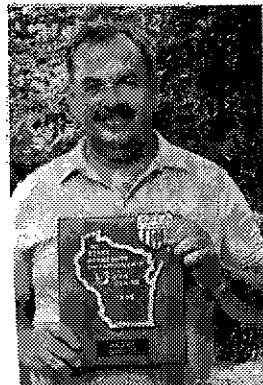
BARRENT DAHL



NICOLE RIEFFLE



CARL SCHLIERM



TOM STEINKE



KEN WOOD



IVAN RUZIC

FROM A STATE CHAMP

contributed by Randy Rein

The 1996 State Tournament has come and gone. It was a great tournament. The weather was perfect for pitching shoes. The two clubs running the tournament did an outstanding job of demonstrating teamwork. They made sure the tournament was running on schedule, and the chairs were always filled with scorekeepers. The people working the concession stand served some delicious sandwiches, bars, and beverages everyone could enjoy. You all deserve a hand for a job well done. Without all of your efforts this tournament would not have been possible.

Lorraine Sternberg and I were honored to present awards to the pitchers in some of the various classes.

Although this is my fifth time winning this title, it didn't come easy. It was, by far, the toughest State Tournament in the last four years. In the Mens Championship class, we had a three tie, Mark Mauthe, John Udelhofen, and myself with 7 wins and 2 losses. At that point it was anyone's game - may the best man win. I feel we all were 'Champions' to get into the Championship class.

It will be a very memorable tournament for me, as my younger son, Wesley (11) won the Junior Boys Championship Class averaging 64%.

I am very happy and honored to be your Wisconsin Mens State Champion once again.

Thanks to all of you.

—Randy Rein

**RESULTS SWEN'S OPEN - AUGUST 3
GREEN BAY**

stuff from Steve Wiegert

During the final days of the World Tournament we asked Steve Wiegert how he was going to direct this year's Swen's Open from Wyoming. Steve: "Don't worry. I left it in good hands."

- A Roxanne Sellison 47.3; Dennis Ambuehl 48.7; Otis Wessley 39.3
- B Al Leintz 40.0; Joe Felton 42.6; Jay Fischer 41.1
- C Ken Koehn 33.6; Steve Mielke 41.1; Jerry Graves 32.5
- D John Quandt 24.0; Dave Pappe 19.5; Bob Damkot 22.0
- E Kim Felton 30.8; Bob Pappe 26.3; Ron Janus 17.1

WAY UP NORTH

By Steve Stevens

The sound of, "4-dead," greeted the crowd at the Marengo Fairgrounds on August 17th.

Class "A" of five of the top nine Wisconsin pitchers met two of the top eight Minnesota pitchers. Add in a recent Michigan State Champ and you have a true Tri-State Horseshoe Championship of the North. A former World Champion from Richfield, Wisconsin was even seen keeping score.

After four hours of competition, the newly crowned Fair Queen presented the winner with the first place cup.

Results NORTHERN WISCONSIN CHAMPIONSHIPS

@ The Ashland County Fair Marengo, WI #28-96-026

- A Randy Rein 70.0; Gerald Stangland 68.9; Gus Schram 63.4
- B Marv Richardson 44.4; Randy Miller 42.5; John Cox 36.0



THE RINGLE-SINGLE

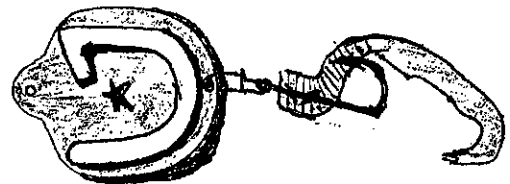
ONE HOOK WILL DO IT

GONE FISHIN'



Man does not live by bread alone, nor should horseshoes be our only passion. We have discovered that, like many horseshoe pitchers, fish prefer Ringle-Singles too.

Gus Schram has developed the R-S fish lure. Dress it with a twister tail, Cast it out with a high arc. Watch it wiggle, waver, dart through the shallows and sink to the deep. Ask for your R-S lure when you buy Ringle Singles. Enter the "Beat the Boss" fishing contest. Send picture of best fish taken on an R-S lure to Newsletter. No entry fee.



RINGLE-SINGLE - The only horseshoe guaranteed to score with fish.

Fully approved and sanctioned by the National Horseshoe Pitchers Assn.

Available through your NHPA sales representative

Designed and developed by Gus Schram, R7239 Hy Q, Ringle, WI 54471