

❖ WISCONSIN HORSESHOE NEWSLETTER ❖

AN AWARD WINNING PUBLICATION

JUNE 1996

TEAM WORLD '96

MINNESOTA STEALS WIN FROM QUEBEC

In the Team-World preliminary rounds it looked like Team Quebec would go all the way. Sylvianne Moisan, pitching near 80%, with Andre Leclerc at 73%, led the team to 81 wins going in to the finals completely outclassing the field. Minnesota won 73.5 times fed by the new combination of Mark Bauman and Dale Lipovsky. Wisconsin with inspired team pitchers, Don Kangas, and Randy Rein, claimed 72 of the 92 preliminary games.



Minnesota: Mark Bauman, Lu Cave, Bev Nathe and Dale Lipovsky

With Quebec, Minnesota, and Wisconsin on the ladder the next four teams played-off for the final ladder position in elimination rounds. The celebrated coin flip used to determine pre-lim matchups was gone. Finals teams matched-up head to head based on tournament percentage. Only winners were to stay in the race.

Sixth ranked Missouri led by Stan Griggs and Lou Rector, became the first victim to fifth ranked Ontario sparked by Sandy Janssens and Stan Leis by 3 wins. On the adjacent courts seventh ranked Indiana, Chad Hyatt and the Seibold men, lost to fourth ranked Kentucky, also by a score of 3 to 1. Kentucky, the defending champions added a standout to the roster, Lois Webster.

Next game, Kentucky took care of Ontario, again winning 3, to earn the last ladder position while Indiana tied, but out-pointed, Missouri to settle the contest for sixth place.

On a roll Kentucky ended Wisconsin's hopes with a one point decision after a 2 game to 2 game deadlock - 101pts. to 100pts.

One more game was the last for Kentucky as they were stopped by the Minnesota team, 3-1, to set up the last match - top ranked Quebec vs. Minnesota.

The match-ups paired the two tournament

(Continued on page 6)

CLUB TEAM 1996

GOLDENDALE - ONE MORE TIME - CLUB CHAMPION
BELOIT CLUB takes "B" WINDY HILL #2 wins "C"

Conceivably the upnorth team of Close X Count had a chance with Goldendale at the on-set but by the time their numbers came up it would have taken all wins to swipe the trophy. As it was they were the only team to give the Gold ones two losses.

The balance of "A" class teams were in a different league. The Sandbar guys and the Muskego gang each won 13 of the 24 games scheduled. Sandbar got the 3rd place nod for making 32 more ringers enroute.

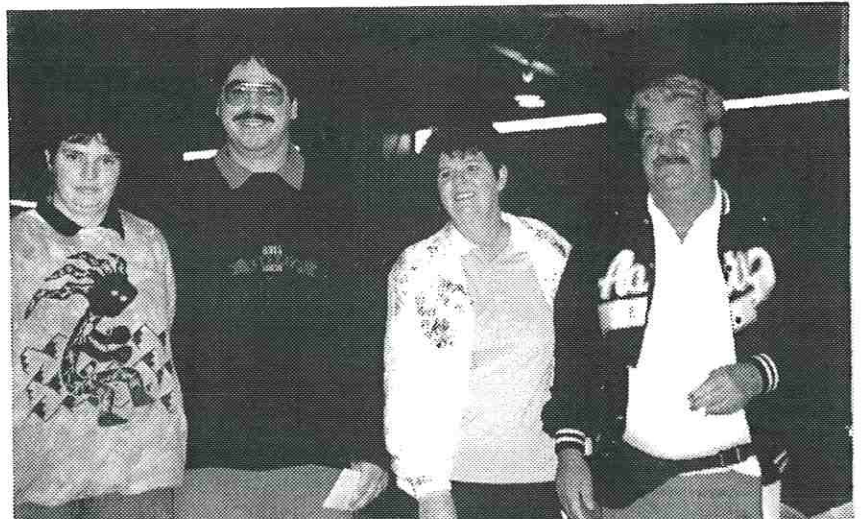
"B" class winners, Beloit, had to come from behind to do it. The six-team class finished with a position round. Shady Nook, #1, went into the round 2 points up on Beloit, then dropped 3 games, wound up deadlocked at 15.5 wins each. The two also split a play-off game. Had to be decided by team points.

All game wins were carried into the "B" class position round. Marshfield gained ground, just not enough at 14.5 wins for third.

"C" class winners, Windy Hill #2 (or Too Windy) did it with 16 winning games. The 4 sports of Sports Arena made second look easy - 14 wins. Fond du Lac, with high team percentage for the class, took sole possession of third despite a 12 win tie with the Gold #2 team.

Twenty teams weathered the 24 cool courts of Telfer Park this year, an increase of one over last time. We played class C in the morning and a full shift of two classes in the afternoon. The day long schedule may be nice for the pitchers but it's tough to get people to work the event both shifts.

The tournament director had warned that pitchers may have to keep their own score. Earl Paulson and some Beloit scorekeepers changed all that. Everybody appreciated those who kept score but it became expected. The few courts without scorekeepers were asking the tournament director for help. *Continued on page 4*



Team Quebec: Sylvianne Moisan, Andre LeClerc, Angeline Moisan, Marcel Boudreault

WHPA OFFICERS**PRESIDENT**

Ken Jaeger Sr
N3539 Knight Rd
New London, WI 54961
414-982-6287

SEC-TREAS

John Secord
W6868 Brown Rd
Fond du Lac, WI 54937
414-922-0080

1ST VICE PRESIDENT

Jane Smith
1481 180th Av
Balsam Lake, WI 54810
715-485-3057

2ND VICE PRESIDENT

Terry Sternberg
W206 N13520 Woodside La
Richfield, WI 53076
414-677-3300

HALL OF FAME

Susie Pritzlaff
W204 N11912 Goldendale RD
Germantown, WI 53022
414-628-1484

SCHOLARSHIP FUND & JUNIOR PROGRAM DIR

Lorraine Sternberg
W206 N13520 Woodside La
Richfield, WI 53076
414-677-3300

NHPA POSITIONS:**REGIONAL DIRECTORS**

Jim Haupt
5075 N Elkhart Av
Milw., WI 53217
414-964-2735

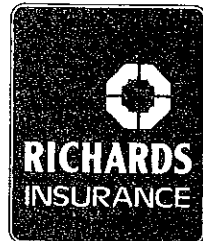
Jane Smith
(add. above)

Ken Jaeger
(add. above)

SEC and 5TH VP

Richard Hansen
3085 S 76th St
Franksville, WI 53126
414-835-9108

DICK BURG
Agent



46 E. JACKSON STREET ■ P.O. BOX 26 ■ HARTFORD, WI 53027
BUSINESS PHONE 414/673-4440 ■ RESIDENCE PHONE 414/673-6979
FAX 414/673-3124

WISCONSIN HORSESHOE NEWSLETTER

W204 N11912 Goldendale Rd
Germantown, WI 53022
414-628-1484

EDITOR/PUBLISHER
SUSIE PRITZLAFF

STAFF/WRITER
JIM HAUPT
jimhaupt@aol.com

Published 8 times annually @ \$7/year

PRESIDENT'S CORNER

Now that the outdoor season is underway and we will be pitching more tournaments, I would like to make everyone aware a few court violations that have been brought to my attention. Heckling: It's considered inappropriate court behavior. Rule 11 covers it completely. Watch the foul line: Other pitchers are watching. Stand 2ft behind your opponent on the opposite side when waiting to pitch. Hopefully tournament directors and judges could help out in these areas.

Another issue, if you don't like the way the tournament director runs his event, let him know so he can make the changes required. When a tournament director asks if every thing is O.K., he's looking for real answers. Remember, he can't make all entrants happy but he would like to meet a happy medium. I think a lot of the smaller problems can be solved through better communication.

In the near future, perhaps at the State Tournament, there will be a meeting for all tournament directors.

Your WHPA president,

Ken Jaeger

COMING EVENTS

JUNE 1-2 WOLF RIVER OPEN; New London \$13
Ken Jaeger N3539 Knight Rd New London, WI 54961
414-982-6287 **Sanc #28-96-015** D/L 5-18

JUNE 8-9 EAU CLAIRE OPEN \$13
Dennis Kieser 1628 Fifth St W #1 Menomonie, WI 54751
715-235-6535 **Sanc #28-96-016D/L 5-25**

JUNE 15-16 MUSKEGO OPEN; Moose Lodge \$15
Tom Steinke 155 S Charles St Waukesha, WI 53186
414-542-0252 **Sanc #28-96-017** D/L 6-1

JUNE 15-16 MARSHFIELD OPEN #1 \$15-\$20
Ron Zeplin D3320 SHW 97 Stratford, WI 54484
715-384-4881 **Sanc #28-96-018** D/L 6-1

JUNE 21-22-23 GOLDENDALE OPEN; Germantown \$15
Jim Haupt 5075 N Elkhart Av Milwaukee, WI 53217
414-964-2735 *Limited* **Sanc #28-96-019** D/L 6-8

JUNE 29-30 WAUSAU OPEN; Ringle \$15
Ken Kosky 6007 Municipal Dr Schofield, WI 54476
715-355-4628 **Sanc #28-96-020** D/L 6-15

JULY 5-6-7 BROTHERTOWN CLASSIC; Archie's Pl \$16
Jim Haupt 5075 N Elkhart Av Milwaukee, WI 53217
414-964-2735 *Limited* **Sanc #28-96-021** D/L 6-23

JULY 13-14 FIELDHOUSE OPEN; Racine \$15
Dick Hansen 3085 S 76th St Franksville, WI 53126
414-835-9108 *Limited* **Sanc #28-96-022** D/L 6-30

JULY 19-20-21 MID-EAST OPEN; Combined Locks \$13
Rosemary Kamps 101 Kamps Ct Combined Locks, WI 54113
414-788-3229 *Covered Courts* *unsanctioned* D/L 7-1

NOTE THIS EVENT IS RESCHEDULED

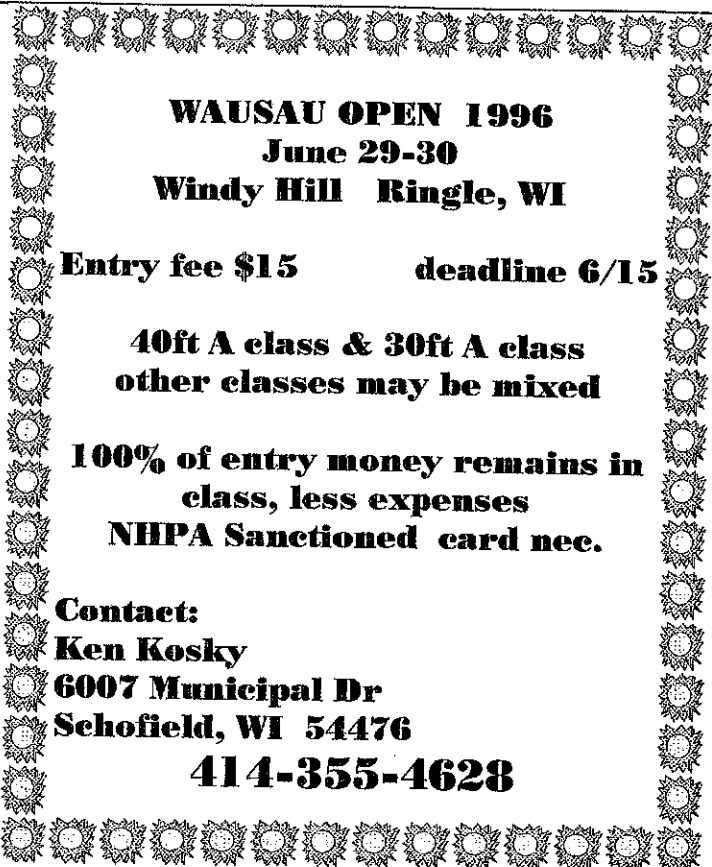
AUG 17 SKIN'S OPEN; FDL; *unsanctioned* \$11
AUG18 FOND DU LAC OPEN **Sanc #28-96-023** \$14
Jeff Secord N6337 Gardenia Ln Fond du Lac, WI 54935
414-922-9698 *may enter one or both days* D/L 6-30

THE BELOIT ENCORE

ENCORE RESULTS

NHPA #28-96-007

- A Clayton Gage 75.7; Lorraine Sternberg 73.9; Randy Rein 74.3
- B John Koepp 55; Heidi Sternberg 43.6; Tony Scrima 42.1
- C Ron Brockway 52.5; Hallie Romanelli 51.1; Larry Fettes 49.6
- D Lloyd Johnson 48.6; Guy Modde 45.4; Bun Carley 43.7
- E Harry Nelson 42.5; John Cox 41.8; Glenn Bogenschneider 40.7
- F Bob Runnas 50.8; Darlene Sabish 47.1; Greg Hehling 43.2
- G Luke Thompson 36.9; Maria Willms 41.7; Terry Sternberg 32.5
- H Bob Anderson 34.5; Dalton Simmons 33.3; Paul Wilson 27.9
- I Norb Strzyzewski 42.1; Rich Conrad 36.3; Chet Hermansen 35.7
- J Galen Koziel 31.8; Bruce McLinn 36.1; Bill Hagen 35.4
- K Lorraine Lange 35.7; Mike Cone 32.9; Kerry Morris 34.3
- L Bob Mitchell 43.9; Gary Rackow 32.1; Bill Wordel 30.7
- M Tom Hadley 32.2; Joe Zoromskis 29.7; Ray Mallo 28.1
- N Bill Spahn 34.6; Mike Rousseau 30.4; Fred Morel 23.9
- O Dean Baxter 23.9; Rob Pankhurst 21.1; Pete Rockers 23.6
- P Wayne Fry 21.4; John Dorcey 21.4; Kip Gusner 20.7
- Q Bud Wicks 22.1; Vernon Rosenberry 20; Tom Hanson 18.9
- R Jerry York 19.3; Jesse Conteras 11.8; Dick Plaisance 21.1
- Jr A Lee McFarlane 34.8; Wesley Rein 35; Paul Fricano 26
- Jr B Drew Parchem 10.8; Josh Schliem 10.5; Chad Parchem 05



WAUSAU OPEN 1996
June 29-30
Windy Hill Ringle, WI

Entry fee \$15 deadline 6/15

40ft A class & 30ft A class
other classes may be mixed

100% of entry money remains in
class, less expenses
NHPA Sanctioned card nec.

Contact:

Ken Kosky
6007 Municipal Dr
Schofield, WI 54476
414-355-4628

More than 150 entrants - makes the result sheet look like the finish order of "Al's Run." Actually the full result sheet required two entire pages.

The Encore remains the BIGGEST one day entry in this state, and maybe a bunch of other states. In combination with the Saturday Club Team, the Beloit facility accomodated about 230 full tournament entries.

The latest rumor is ;the event will go two days next year following the Club Team by a week.

The tournament director's name, seems to be missing from the results. It is apparent that Earl Paulson could not afford the luxury of pitching his own club event. The Beloit Club as a whole pitches in to help at this and all their tournaments but the driving force, the guy and who contributes the most, is Paulson.

Ever notice that the Beloit Club keeps your losses on low key? The result board never shows those ugly red "L's." They say, weakly, "The Beloit Club likes to stay in the black."



WISCONSIN HORSESHOE
PITCHING SUBDISTRIBUTORS

GAME RELATED ITEMS

Elaine & Cliff Troullier

3126 Wagon Wheel Road, Manitowoc, WI 54220
 (414) 682-3197

paid advertisement

EAU CLAIRE HORSESHOE CLUB

CORRECTED MOTEL LISTING

We invite you to join us for our 1996 tournament schedule - the Earlybird tournament being held May 11, 1996 and our annual Eau Claire Open on June 8-9, 1996.

For your convenience we are providing a listing of motels that have supported us over the years. We ask that if your plans include spending the weekend, that you would consider staying at their facilities

Hope to see you in beautiful Eau Claire in 1996; Have a safe and successful pitching year.

Sincerely, Randy Hansen, Tournament Director

- All area code 715
- MidwayHotel of Eau Claire 835-2242 Quality Inn 834-6611
- Ramada Inn 834-3181 Heritage Motel 832-1687
- Westgate Motel 834-3580 Otter Creek Inn B&B 832-2945
- Excel Inn 800 356-8013 Comfort Inn 833-9798
- Maple Manor Motel 800 624-3763

ADDITIONS TO MAY ISSUE

- Holiday Inn Conv Center 835-6121 Days Inn West 835-5550
- Holiday Inn Campus 835-2211 Kamp O Klare 832-7379

CLUB TEAM		SANCTION 28-96-006	
Class A		Class C	
GOLDENDALE FIRST 66		WINDY 2 FIRST 37.4	
Lorr Sternberg	75.8	Rick Poppe	47.5
Don Kangas	73.3	Greg Hehling	41.6
Ralph Maylahn	69.2	Ken Kosky	40.4
Heidi Sternberg	45.8	Alan Hehling	27.5
CXC SECOND 63		SPORTS ARENA 2ND 37.1	
Clayton Gage	71.3	John Crook	51.7
Edie McKinney	72.9	Ken Frame	32.5
Jane Smith	53.3	John Aeschlimann	32.9
Sue Helene	54.6	Ron Berg	27.5
SANDBAR THIRD 53.5		F. D.L. THIRD 38.6	
John Udelhofen	57.5	Jeff Secord	47.1
Jim Larson	47.9	John Secord	42.1
Dale Bauer	54.2	Terry Schrage	41.7
John Barden	54.6	Rob Struebing	23.8
MUSKEGO FOURTH 50.2		TOO GOLD 4TH 37.6	
Pam Steinke	60.8	Jim Haupt	33.8
Penny Steinke	45.8	Ken Heinritz	47.1
Tony Scrima	50.4	Terry Sternberg	37.1
Wayne Vanderhei	43.8	Ken Davison	32.5
GREEN BAY FIFTH 50.2		FIELDHOUSE FIFTH 36.1	
Mer Sorensen	59.2	Geri Meistad	47.5
Steve Wiegert	49.2	Len Meistad	17.1
Phyllis Davids	52.1	Ron Willms	36.3
Otis Wessley	40.4	Maria Willms	43.3
WINDY HILL SIXTH 52		BELOIT B'S SIXTH 29.4	
Randy Rein	73.3	Russ Burns	27.9
Gus Schram	50.8	Harold Laws	41.7
Pat Spahn	47.1	Duane Grossen	36.7
Ruben Eckhard	36.7	Paul Wilson	23.3
EAU CLAIRE 7TH 36.3		EAU CLAIRE 2 7TH 33	
Dave Schorbahn	40.8	Ron Brownell	45.8
Curt Bestul	30	Kathy Hanson	29.2
Gert Wilcziek	41.3	Ron Wilcziek	26.7
Bill Schaaf	32.9	Randy Hansen	30.4

Class B		KENOSHA 4TH 38	
BELOIT FIRST 42.3		Dick Muhlenbeck	33.8
Harvey Bilz	39.3	G Bogenschneider	40.4
Earl Paulson	41.1	Lloyd Johnson	44.2
Jerry Schroeder	42.1	Doug Bakkum	33.8
Bob Runnas	46.4	WAUNAKEE 5TH 34.4	
SHADY NOOK 2ND 44.4		Mike Menden	40.8
Bernard Carley	42.1	Tip Wipperfurth	34.2
Dave Klipstein	39.6	Fred Decorah	30
Rick Poppe	51.1	Julian Tijernia	32.5
John Crook	44.6	COMBINED LKS 6TH 33	
MARSHFIELD THIRD 39.8		Elaine Troullier	30.5
Bob Gregorich	49	Cy Srenaski	33
Greg Bottlemey	33.8	Cliff Troullier	34.5
Erik Bottlemey	31.5	Wally Srenaski	23.8
Vince Jakel	42.5	Norb Strzyzewski	42.5
George Draeger	41		

1996 GOLDENDALE OPEN
June 21-22-23
Classes for Men Women and Juniors
Separate but mixed when nec.

Entry fee \$15 deadline 6/8
All entry money remains in class
Guaranteed 100% payback less exp.
Awards: Plaque and cash
A & B cash only

NHPA sanc# 28-96-019

Contact:
Jim Haupt
5075 N Elkhart Av
Milwaukee, WI 53217 414-964-2735



Club Team Class C winners: WINDY HILL #2. (Too Windy)
 Standing; Ken Kosky, Al Hehling, Greg Hehling . foreground, Rick Poppe

CLUB TEAM

Continued from page 1

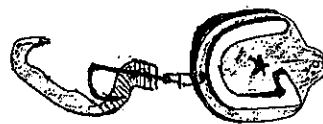
The Club Team Director conducts the tournament as a cooperative, self-help venture. Special thanks to Sandy and Ann Secord, Glenn Bogenschneider, and Jerry Schroeder.

All Hail, Goldendale, first and latest Culb Team winners, Sternberg, Maylahn, Kangas, and Sternberg. They are running up a healthy bill at the trophy engravers

Welcome to the winners circle, to Bilz, Paulson, Schroeder and Runnas. The Beloit club came through when it was on the line.

Look for a lineup change for Windy Hill#2 Their #1 team may call up a Hehling or two, maybe a Kosky and definitely a Poppe.

BIG FISH CONTEST! ENTER NO FEE PRIZE!



Look closely at the picture to the right. The lure dangling from that largemouth is the latest brain child of the Ringle Single inventor, Gus Schram.

We are beginning a contest to beat the Boss with his own lure. Send your fish picture to this Newsletter. Must be caught with the R-S lure. Available from Cliff Troullier or Gus. Enter now. No fee! Most species or biggest fish Prize to be announced. *"One hook is all you need."*

WISCONSIN AT TEAM-WORLD

The WHPA sponsored a number one team that had the firepower to go all the way. The #1 team must have sensed they were on to something good with their first shoes. Very first match they split with the power of Minnesota. Later, held Kentucky in check with another split. Only one loss to California totaled to 31/5 for the first day. Four of the five pitchers were averaging 70% or better.

John Udelhofen acted as utility infielder/manager. He allowed only Lorraine Sternberg to pitch all matches, working himself as a closer for Claton Gage on occasion. The big lefty, Don Kangas pulled himself just one time as did Rein.



WI#1 John Udelhofen, Don Kangas, Randy Rein, Lorraine Sternberg, Clayton Gage

Quebec caught them napping and took all four early Saturday. but the team held Indiana, Colorado, Missouri, and Ontario each to a one game intrusion. At this point they were shooting for 2nd to Quebec on the ladder. It should have been but they dropped four in the final two matches - no matter - on to the finals in third position.

Once again they split with Kentucky. Friday, WI#1 would have won the points decision but this was not their Sunday as the Wisconsin Team went down by one point - 100 to 101.

Good job, big guns, they just ran out of bullets

Here's switch. Wisconsin#4 gave Quebec one of their toughest matches winning two games. John Barden handled Marcel Boudreault and Buck Huffman won over Angeline Moisan.

Wisconsin#3, unintimidated, accomplished a near split with the Wisconsin teams #2 and #4.

The Upnorth team 2 of Wisconsin was second in duel of #2 state teams and surpassed their Minnesota rivals by one game.



To the WHPA from the Wisconsin team
 On behalf of the Wisconsin team, I would like to thank everyone for their support. We thought we could do it this year but it wasn't meant to be. We were stopped just a little short of third place. Everyone on the team put out their best effort and it was a pleasure for me to be a part of this team.
 Thanks to all of you,
 Lorraine Sternberg

BRO-TOWN CLASSIC
 JULY 5-6-7
 at Archie's Place, Brothertown, WI

Look for a 30ft A and a 40ft A
 will be separate if practical
 other classes will be mixed

Cash Awards - all entry money remains
 in class less expenses.

FEATURING THE NEWEST
 Gusto-matic self operated slide-score
 NO CHARGE scorekeeping

Entry fee \$16 at the courts \$17
 DEADLINE 6-23 LIMITED
 NHPA Sanctioned- card nec.

Jim Haupt 414-964-2735
 5075 N Elkhart Av
 Milwaukee, WI 52317
 414-964-2735

TEAM-WORLD '96 Continued from page 1

percentage leaders, from Quebec, Sylvianne Moisan vs. Minnesota's Lipovsky. Horseshoe Champion of Canada, Leclerc was pitted with Bauman while Angeline Moisan's opponent was Bev Nathe. Quebec's, Marcel Boudreault matched with Lu Cave. Bauman and Leclerc took it to the final click. Each pitched 75% but Bauman managed a three point edge. Lipovsky won as did Nathe. Quebec managed just one game win by Boudreault.

Minnesota does it again. They have proven to be the team to beat. Team-World '96 belongs to Minnesota

Illinois, a past winner, found eighth place - a repeat of 1995 - one place out of the money.

Cash awards were: Minnesota \$2000; Quebec \$1000; Kentucky \$600; Wisconsin \$500; Ontario \$400; Indiana \$300; and Missouri \$200.

Spring is slow in coming to Wisconsin this year. The Beloit courts were cool - nice but cool. OK for the pitchers but cool for scorekeepers. To warm them a bit, the pitchers paid a dollar per game to keep those pencils moving.

"Moving" also describes the Team-World action. Announcer, Dick Hansen, regularly had to wait for the clock to catch up before starting new groups of teams. If there were any glitches, they passed by unnoticed.

Every year the Team-World roster changes, adding some new teams or team members. This year Team California revisited the event with a new player, Teddy Guillotte, World Champion pitcher-lady of the senior division. She led the team of Dave Loucks, Gail Sluys, and Steve Wyrill. Lois Webster is back with a top percentage performance. Charlie Killgore, the Team-World man from Missouri, put a hold on spring fertilizer to play once again.

Among these top pitchers 80% games were common, fact is, there were seventeen games of 35/40 ringers (87.5%). Sylvianne Moisan had a 90% game and Dale Lipovsky had two 90%'ers. Mark Bauman of Minnesota and Randy Rein of Wisconsin each stroked the stake 37 times - 92.5%. Those were the big numbers but, Craig Zuehlke of the Illinois#4 team pitched one mighty game of 70% while carrying a 39% average.

Mark up Team-World '96 as win number six for the Gopher State. Amazingly the Team-World Cup has resided in Minnesota four of the past five years! The Team-World Cup is a traveling trophy. It did travel to Kentucky for a year. This time had prospects of going all the way to Quebec, but the team - Nathe, Lipovsky, Bauman, and Cave - thought it should go home again.

MINNESOTA 73.5	1st PL	-69.83	COLORADO	48	12th tie
Bev Nathe		73.40	Paul Lacrosse		71.52
Dale Lipovsky		75.80	Rich Pintor		73.80
Mark Bauman		75.20	Dan Schneck		53.80
Lu Cave		54.90	Allen Baptist		25.76
QUEBEC 81	2pl	-69.32	MISSOURI 3	44.5	14th
Sylvianne Moisan		78.86	Jan Kreienkamp		54.78
Angeline Moisan		65.00	Loree Meier		55.43
Andre Leclerc		72.60	Ron Hassler		52.07
Marcel Boudreault		60.83	Randall Grady		55.98
KENTUCKY 71.5	3pl	-66.85	MICHIGAN	41.5	15th
Sue Snyder		59.48	Kent Rundell		58.15
Lois Webster		73.80	Ray Hill		48.70
Ron Powell		62.50	Jim Wiltse		48.37
Charles Meredith		72.22	Larry Kemp		57.61
Don Titcomb		61.25	WISCONSIN 4	37.5	16th
WISCONSIN 72	4pl	-69.27	Jim Larson		50.11
Lorraine Sternberg		70.42	John Barden		59.02
Clayton Gage		65.00	Marvin Huffman		53.91
Randy Rein		72.28	Tony Scrima		45.11
Don Kangas		70.76	WISCONSIN 3	34.5	17th
John Udelhofen		62.14	Pam Steinke		54.46
ONTARIO 68	5pl team	-68.9	Mark Mauthe		49.89
Sandy Jansen		73.20	Gus Schram		53.91
Steve Hohl		70.80	Heidi Sternberg		45.00
Stan Leis		68.60	ILLINOIS 3	34	18th
Kevin McLachlin		63.60	Steve Denault		52.28
INDIANA 63	6th	-66.23	Mike Green		53.70
Chad Hyatt		70.40	Michelle Thornton		47.61
Mark Seibold		67.00	Leslie Dickerson		41.20
Curly Seibold		67.80	IOWA 26	19th	
Ralph Guffey		59.70	Leo Buell		42.50
MISSOURI 64.5	7th	-68.33	Marvin Engsler		48.26
Stan Griggs		70.80	Bob McKee		52.50
Lou Rector		70.70	Stoney Jackson		42.28
Sam Carter		68.40	MICHIGAN 2	24.5	20th
Chas Killgore		63.40	Al Morris		45.87
ILLINOIS 58.5	8th	-64.35	Rod Tanner		46.85
Cliff Baker		61.63	Marty Quillen		53.26
Charlie Webb		67.28	Steve Summerlin		37.72
Jerry Dumstorff		65.54	ILLINOIS 2	23	21st
Larry Knop		62.93	Dennis Reid		62.32
MISSOURI 2	55	9th	Thomas Reid		44.57
Rose Diekamp		63.48	Ron Hopman		50.00
Bob Diekamp		54.02	Rich Andrysiak		38.59
M.O. Turner		64.67	Joe Kolodziejczak		35.56
Tim Burkemper		50.87	MISSOURI 4	13	22nd
CALIFORNIA 51.5	10th		Ron Deno		43.70
Teddy Guillotte		74.78	Jerry Francis C		32.61
Gail Sluys		54.78	Bob Thompson		37.61
Steve Wyrill		58.91	Jeff Mudd		26.74
Dave Loucks		53.04	IOWA 2	11.5	23rd
WISCONSIN 2	49	11th	Harold Garner		27.61
Eddie McKinney		59.78	Russ Martin		41.52
Mark Stevens		48.59	Herb Hansen		33.59
Larry Barber		57.39	James Jackson		35.43
Jane Smith		55.00	ILLINOIS 4	10.5	24th
MINNESOTA 2	48	12th (tie)	Hallie Romanelli		39.35
Edie Holland		61.63	Dalton Simmons		30.00
Sig Armitage		56.09	Luke Thompson		40.7
Gerald Stangland		58.59	Craig Zuehlke		39.35
Len Lipovsky		54.89			

3 TOURNAMENTS REQUIRED FOR STATE

Participation in three sanctioned tournaments during the past year is required for entry in the 1996 State Tournament. The past year includes tournaments pitched as far back as August of 1995.

For multiple entries, please copy the State Entry Form found in this issue.

THE BLUEBIRD OPEN

They still call it JackPine Bowl but it's horseshoes and parties now. In April, Frank Schalk called his horseshoe party simply, The Bluebird. Bluebird houses, authentically constructed, were the trophies of the day.

The explicit directions were to mount the bird house at least 200 yards from the people house. How the heck do you know if you have any tenants? Randy Rein says, no problem, he's got 20 acres. Ken Jaeger, has the space - he took one for third. Hope the blubirds aren't as particular in Racine. Gerri Meistad was second.

B class winners were : Maria Willms, 42.5%; Ron Willms, 36.4%; & John Carlin, 33.6%

In C it was Linda Aber, 28.2%; Dan Williams.36.4%; & Gene Rhinehart with 26.8%



Tournament Director, Francis Schalk with bird house winners; Ken Jaeger, Randy Rein & Gerri Meistad

Tom Robinson, JackPine owner, said he just got the electronic scorekeepers (from the Pitchin' Palace) working the day before. Schalk had recruited some new people to push the buttons and do the marking. My scorekeeper was Judy. Ordinarily she works sporting events as a gymnastics judge so marking ringers was no great problem. Gymnastics pays a little better than horseshoes, she says. O.K., O.K., I replied, forget the ringers. Am I ahead on style points?

Robinson asked if we could print something nice about Ken Jaeger who's put in some court construction time at the Jack Pine. Talk about a tough assignment... This is where I draw the line.

DOWN and BACK

with Jim Haupt

Lorraine Sternberg is responsible for the WHPA Junior Scholarship Fund and diligently tries to pick up a couple of bucks at every opportunity. At Team-World, she enlisted Rick Poppe to sell raffle tickets on a fancy clock and with the handy cash box the tickets also sold on their own.

Score keeping at Team-World has climbed to \$2, total per game. The steady flow of volunteers were paid as the sheets were turned in. But what do you do when a visiting score keeper refuses the cash?

Dick Hansen had that problem with Illinois pitcher, Charlie Webb, he would not take the two bucks. Paulette Hansen solved the dilemma. She was seen making periodic trips to the clock raffle. She invested all of Webb's pay in the Jr Scholarship Raffle. Come Sunday, darned if Charley Webb didn't just up and win that clock. Blessed are they who give of their time; may theirs be endless.

* * * * *

Even the most dedicated of horseshoe pitchers sometime find it tough to gut it out and watch the final-final game. At Team-World,

finals tiebreakers are in place. If teams end in a 2-2 tie, total team points are counted. Point margin has become part of the team effort. When points are even ringers come into play - all to avoid another game.

The all-tie situation came close this year. The Wisconsin team lost to Kentucky by just one of the total points Had they tied and gone to ringers, this time those totals were also tied. It seems to follow an extra game would be in order. But how about a shootout?

A shootout in horseshoes could be an exciting moment. Down and back on a tie. It's not new. In team form each pair would pitch down and back, at least one time or until the team tie was broken. Pairs pitching those extra innings in team order would hold the interest of many fellow contestants who are otherwise prone to hit the road.

* * * * *

About a week prior to May 2nd, I (and apparently a number of others) received a post card announcing Carl Gilbertson's forthcoming 70th birthday. "We are having a surprise card shower," it said.

From the sound of the following note, it seems Gilbertson's mailman was working overtime

OVER 70 UNDER 40

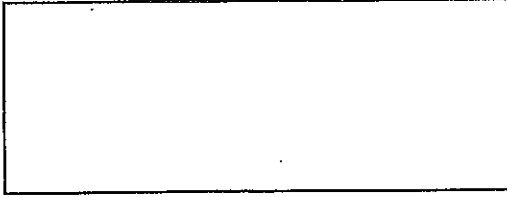
I want to take this opportunity to thank each and every one that remembered me with cards on my 70th.

As the heading says,, over 70, under 40. I hope I can again become more competitive. So again, thank you all for this wonderful surprise. You are a great bunch of people and I am proud to call all of you friends. God bless you all.

Carl Gilbertson

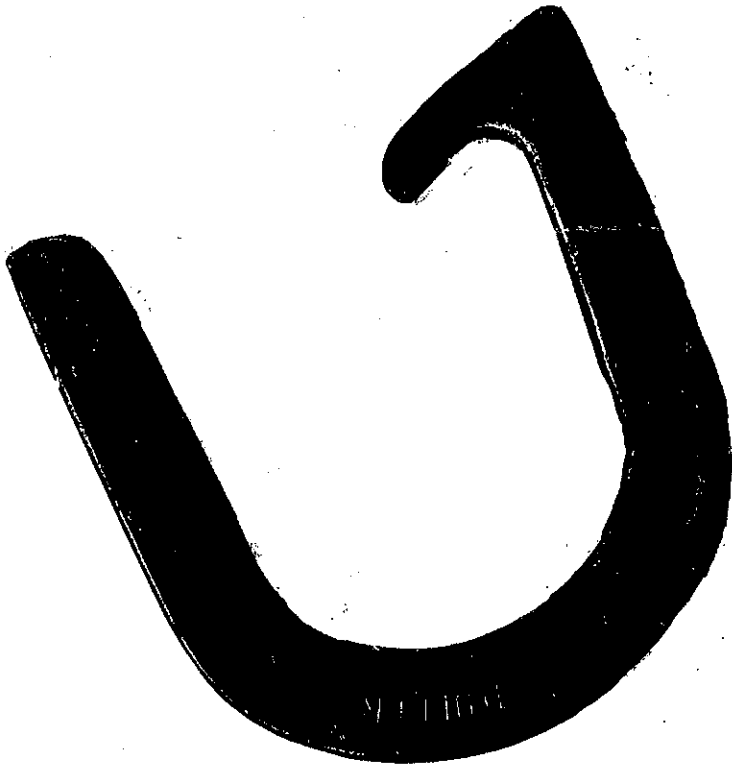
WISCONSIN HORSESHOE NEWSLETTER
W204 N11912 GOLDENDALE ROAD
GERMANTOWN, WI 53022

BULK RATE
U.S. POSTAGE
PAID
PERMIT NO. 25
GERMANTOWN, WI
53022



THE RINGLE SINGLE

SHAPED TO HOLD THE STAKE



*Pitched by Charley Meredith in
Kentucky tournament for a winning
average of 77.5%*

Pitched by 1995 World Class
Champion, **Cliff Troullier**,
NHPA Game Related Sales
representative in Wisconsin-

*Pitched by World Class Champion,
Terry Sternberg, WHPA Vice
President. Open Men H3*

Pitched by **Dave Loucks**, NHPA
President, to better his tournament
average by 10% at Perry, GA.

Fully approved and sanctioned by the National Horseshoe Pitchers Assn.

Available through your NHPA sales representative

Designed and developed by Gus Schram, R7239 Hy Q, Ringle, WI 54471