

# WISCONSIN HORSESHOE NEWSLETTER

FALL MEETING

VOLUME 7 NUMBER 5

NOVEMBER 1992

Once again the site of the Fall State Meeting and was the Royal Wood Sports Center at Plover. The Tournament

Dan Jaglowski of far away Waukesha took it upon himself to act as tournament director after it appeared there were no other volunteers. Jaglowski managed to keep the A men's class full despite some last minute cancelations and, further, accommodated 36 pitchers in the NHPA sanctioned event. Its good to know the WHPA has some 'take-over' people not afraid to get their feet wet. That fact may have been Jaglowski's finest contribution. Certainly he's not through as an organizer.

#### The Meeting

The other thing happening at the Sport Center was the WHPA business meeting. The minutes of that meeting will not be recorded here, only some pertinent highlights.

John Secord, Sec-Treas, reported an 'in the black' balance of near \$3300.

The Jr Scholarship Fund Coordinator, Lorraine Sternberg, says we have about \$5000 in the clear and she was able to maintain the yearly average income of \$1000 +/-.

Jim Haupt asked for return of all tournament registration forms for 1993 emphasizing the importance of NHPA sanctioned tournaments.

Jane Smith spoke for all the gang North-of-8 who donated what they hope will become a traveling banner for the Wisconsin Association.

President, Dick Hansen, promised the WHPA non-profit status should be ready before the Spring Meeting.

Our NHPA is beginning to establish a NatStats Center. From results filed, World Tournament qualification will be determined. A new result form is being considered by the NHPA to facilitate the NatStats process. Although full details are not now available, it is known all pitchers will be identified by their NHPA card number. Tournament directors take note and register by card number.

Championship classes of men and women in the coming State Tournament will be cut to ten (10) each. It was said to be originally a Norm Mauthe idea, in part, but introduced on the convention floor by Lorraine Sternberg and Joan Guetzke. Before the motion went a vote Jane Smith countered that ten women represented one fourth of all women entered and suggested a lesser number would enhance the class whereas the men's group could accommodate more. The vote was 17 to 16 (counted three times) in favor accepting 10 and 10. State men's and women's championship classes will be 10 and 10 in 1993. Is there an echo in here?

In absentia but through Dick Hansen, Norm Mauthe introduced increased awards to State juniors via the Scholarship Fund. Members accepted his proposal on a trial basis, to add a third and fourth prize based on percentages. Both boys and girls will now receive: 1st \$300; and 2nd \$150. Next year the next two high percentages will receive \$100 and \$50. It adds up to a total annual award of \$1200 for juniors.

The State Champions should be seeded number one if they qualify for the class said Jeff Secord. Others agreed and that became a successful motion.

Curt Bestul introduced a proposal for a by-law change thought by President Hansen to be of magnum proportion; so much so that he asked that it first be published and shelved it until the Spring Meeting.

#### Bestul's amendment to Article IV, Section 2:

[All State Tournament entries (other than defending State Champions) will be placed by using the three (3) highest NHPA sanctioned tournament averages from August 1st of the previous year through July 31 of the current year. If a pitcher has only 2 NHPA tournaments, a sanctioned league average may be used if it covers at least 400 shoes.]

#### Bestul's amendment to Article VII, Section 3:

[All NHPA sanctioned Wisconsin tournament directors shall send 50¢ per Wisconsin entry along with tournament results to the state sec/treas. (25¢ per entry to Sec/treas. and 25¢ to state treasury.) Averages of Wisconsin NHPA members only are to be kept by the state sec/treas.]

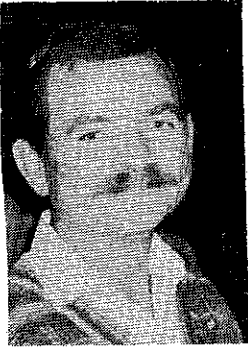
Hansen will allow minimum discussion on the Bestul by-law changes before bringing it to a vote at the Spring Meeting.

Al Lonning asked about the WHPA constitution and by-law book. Secord explained that it is updated following any change but presently exists in full form only on the computer, available on request. It was suggested one copy could be sent to each club for further copying and distribution.

Bids for the 1994 State Tournament hosts were called for. There was a slight pause, (apparently waiting for others) before Curt Bestul offered the Eau Claire facility. A voice sang out, "How about Mountain?", another concurred, "Yeah, how about it Mountain?". Mountain did not answer. 1994 - its Eau Claire.

As expected Jane Smith and John Secord were re-elected as WHPA officers whereupon the meeting was adjourned.

Hansen reconvened some of the group to witness Smith and Secord hang their plaques in the WHPA Hall of Fame. (The Hall's full : WHPA needs cabinetmaker.)



## DICK HANSEN WHPA PRESIDENT

The effort of a few, for the benefit of many, a quote from your WHPA president that describes this year's Fall meeting. A total of about 10% of our members took the time to attend a very busy, long, loud and sometimes MAD, MAD, MAD MEETING. Details and changes are elsewhere in the newsletter. My thoughts and views are contained in this letter. One of the duties of this office is to preside over our Fall and Spring meetings, to maintain order and abide by the bylaws of the WHPA. Without a doubt to maintain some sort of order is by far the hardest part of this job. Maybe a two pound hammer instead of a can of coke for a gavel would help. Maybe I should be thankful only 30 plus were there! Time to move on.

It was brought to my attention that some of our members do not know or care to follow the rules of the WHPA or the NHPA on forfeits. I found the following in the NHPA bylaws and playing rules.

Bylaws: Article XII, Section 12, The last sentence reads, Any Person who forfeits games shall finish where ever his record puts him in the standings unless he forfeits for un-approved reasons; then he finishes last. Un-approved in this case is to be determined by the tournament director.

NHPA rule #7, Player and member conduct section H, reads, No player may indulge in actions, words or phrases disturbing to his opponent, nor will profane or abusive language by any member of the NHPA be permitted upon the tournament grounds. Violators of these rules may be subject to suspension from the NHPA for one year.

It would not be a pleasant task to enforce the rule, but in the best interest of the sport and as WHPA president I'm obligated to do so and will. As I'm also a member of the NHPA Rules Committee and have been going over each and every rule, I intend to include in each article I write for the newsletter one rule that I feel is not followed

or not understood and attempt to clarify it. Look for it in the next issue.

At the meeting we discussed the formation of the NHPA's National Stats Center. Two days later I received in the mail the information that is required from each NHPA sanctioned tournament. This information should be sent on to John Secord who will send it to the NHPA Stats Center. All tournament directors, take note, the pitchers in your tournament need this for their records.

#### TOURNAMENTS:

1. Sanction Number
2. Date
3. Location
4. Contact Person

#### PITCHERS:

1. NHPA Card Number
2. Name, First and Last
3. Home Charter (List only if not from Host Charter)
4. Category Designation as follows: None = 40' Men, 30 = 30' Men, W = Lady, B = Jr. Boys, G = Jr. Girls, R = Total Ringers, SP = Total Shoes Pitched

I will put together an example tournament and send it to all tournament directors as soon as possible. If you have questions on this, please call or write to me. Remember, it is an important requirement for anyone of the pitchers in your tournament.

Keep up, don't fall behind and stay informed. Subscribe to the NHPA Newslite.

### SPRING MEETING

MARCH 20th

For those WHPA members who were at the Fall Meeting, take note of the change of date for the Spring meeting.

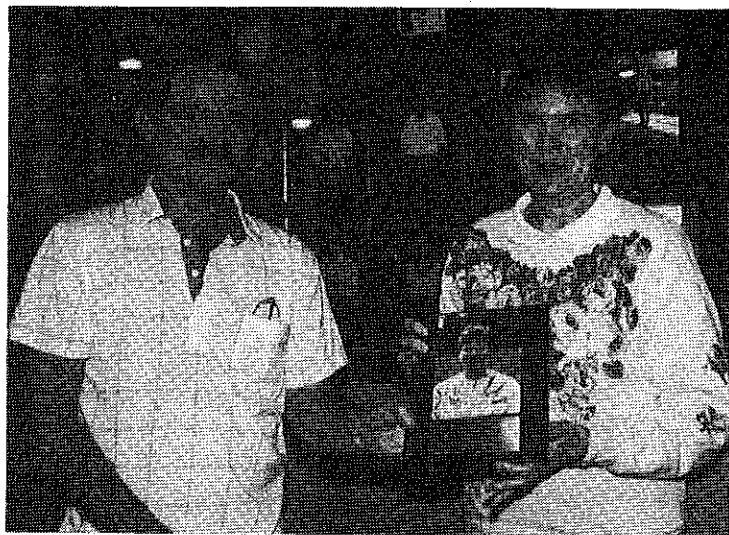
One Day Service  
Awards, Trophies, Plaques  
Sales Incentives

#### **RUDIG OLYMPIC AWARDS**

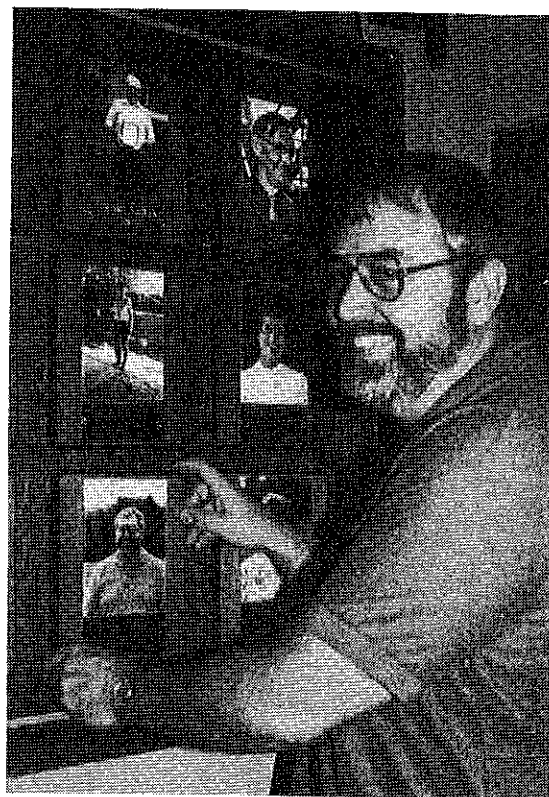
118 S. 2nd Street  
Milwaukee, WI 53204

Royce DeBow  
National Sales Manager

(414) 273-2727  
FAX 414-273-7039



Pictures - Jane Smith accepting Hall of Fame plaque from WHPA President, Dick Hansen. On the right, John Secord placing his picture plaque in the WHPA Hall of Fame display case at Royal Wood Sports Center.



**WHPA OFFICERS**

**PRESIDENT**

Richard Hansen  
3085 S. 76th ST.  
Franksville, WI 53126  
414-835-1321

**SECRETARY-TREASURER**

John Secord  
W 6868 Brown Rd.  
Fond du Lac, WI 54935  
414-922-0080

**1ST VICE PRESIDENT**

Jane Smith  
R. Rt. Box 17  
Balsam Lake, WI 54810  
715-485-3057

**2ND VICE PRESIDENT**

Curt Bestul  
1412 Sherwin Ave.  
Eau Claire, WI 54701  
715-832-3603

**HALL OF FAME**

Ann Opsteen  
304 Williams St.  
Combined Locks, WI 54113  
414-788-1202

**SCHOLARSHIP FUND**

JUNIOR PROGRAM DIRECTOR  
Lorraine Sternberg  
W206 N13520 Woodside Ln.  
Richfield, WI 53076  
414-677-3300

**NHPA REGIONAL DIRECTORS**

Jim Haupt  
5075 N. Elkhart Ave.  
Milwaukee, WI 53217  
414-964-2735

Ken Jaeger  
Rt. 4 Knight Rd.  
New London, WI 54961  
414-982-6287

Jane Smith  
R. Rt. Box 17  
Balsam Lake, WI 54810  
715-485-3057

**WISCONSIN HORSESHOE NEWSLETTER**

W204 N11912 Goldendale Rd.  
Germantown, WI 53022  
414-628-1484

EDITOR / PUBLISHER  
Susie Pritzlaff

STAFF / WRITER  
Jim Haupt

Published eight times annually @ \$7.00 / year.

**FALL MEETING TOURNEY**

BY Dan Jaglowski

Plover being just about in the middle of the state, most people had to travel 3 to 5 hours to get there. Most of the pitchers seemed to have a good time, at the meeting and pitching.

We had some seniors, one junior, a men's A class, a women's A class and many mixed classes.

Have you ever had one of those days when you lose your voice and pitch your worst tournament in 11 years? Believe me, it can and did happen to me!

The Spring Meeting will be March 20th, 1993 in Plover, Wisconsin. I have agreed to direct a similar tournament, NHPA sanctioned. Sign up with \$15 entry fee and 1993 card number before March 6th. See calendar for details.

**RESULTS**

**WOMEN**

A Edi McKinnéy 60.0 Lorraine Sternberg 51.6

**MEN**

A Randy Rein 66.4 Mark Stevens 62.0

**MIXED**

B Harold Bestul 58.0 Cliff Troullier 40.8

C Sylvia Kaiser 50.0 Greg Bottlemey 47.2

D Merwyn Sorensen 36.4 Steve Stevens 39.2

E Kevin Brekke 37.2 Lori Brekkke 18.4

Thanks to all for coming to the State Meeting at Royal Wood. Special thanks to the scorekeepers and to Jane Smith, who posted scores in the afternoon.

WET AND WILD

Sept 12-13, 1992 #28-92-091

DOWN AND BACK

WITH JIM HAUPT

Tip Wipperfurth figures to run some monthly doubles tournaments at the Arena Sandbar. He works with with an active list of 16 teams - as long as a team continues to show-up they remain on the list. Could be that he has a waiting list for active pitchers. Games will be twenty-one points and all teams play all others for a total of 15 games. Play will start at 11:30 AM. So far the dates are November 14; December 12, and January 16. (December 6th Wipperfurth has an invitational tournament scheduled for area pitchers.) Tip Wipperfurth 808-849-4655.

\* \* \* \* \*

Jeff Secord has been announced as the 1992 WHPA State Tournament Director. At a recent meeting with the managers of the Fond du Lac fairgrounds, club president Dick Schoener introduced first the State secretary, John Secord, then Jeff Secord as the State Tournament Director. That last one raised their eyebrows. 'The Kid' was asked how long he had been in the sport. The assuring reply was, "Fifteen years".

When the State does roll around, the younger Secord would rather not see the three trophy tradition still in effect. He said at the Fall State Meeting that it would be good to discuss the three trophy thing in the NEWSLETTER. Some of the rest of us young guys think three trophies per class is worse than a bad joke. How about just one trophy? Two? Read this column next time Jeff. You'll see how many pitchers really care.

\* \* \* \* \*

Saw Don Goldsmith in early October at Arena. He's keeping his head warm with a baseball cap and making progress on his promise to win against Leukimea.

\* \* \* \* \*

The State Chmps, all five, are putting in orders for personalized jackets with Brian Repinski's outfit -Center States Sports. The champions had their choice of styles and the WHPA is picking up the tab.

\* \* \* \* \*

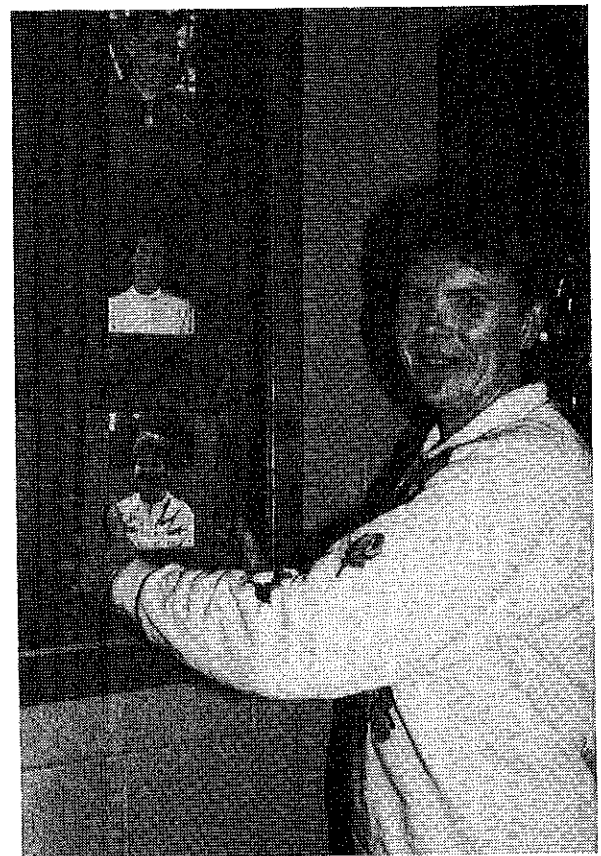
President of the Fond du Lac club, Dick Schoener, is planning for the 1993 State Tournament. Somehow he has arranged for construction of a new Super 8 Motel in Fond du Lac - just for horseshoe pitchers? Maybe he said he would save some rooms - just for horseshoe pitchers.

\* \* \* \* \*

Received an indoor schedule from Jack Freeman's Tennessee Horseshoe Courts and have listed a few on our calendar. All tournaments are sanctioned and begin 10:30 AM Saturdays. Open for practice Friday nights before tournaments and 'off' weekends.

A Lu Cave	MN	78.95	Ralph Maylahn	69.64
B Rosie Leyk	MN	61.07	Don Hostrup	58.21
C Tiffany Gage	MN	50.35	Ev Goshaw	50.35
D Dick Dvorak	MN	47.42	Bill Bunting	MN 52.50
E Shari Davison		52.14	Sue Winge	44.64
F M Gustafson		45.00	Gracie Reed	41.42
G Steve Stevens		43.92	Goe Chevrier	41.78
H Jim Ganther		28.21	Rose Osterhues	38.90
I Lyle Kent		40.00	Joanne Alling	30.00
J Pat Senger	MN	23.30	Al Zuleger	MN 16.25
Juniors:				
A Tom Christiansen		18.75	Jared Lehman	8.70
B Ryan Wildt		7.33	Paul Iverson	4.66

We had only two hours of rain on Sunday--so the WILD reigns! Drawing winners were Dick Dvorak - horseshoe case and Ida Hostrup - maple syrup. Our tournament in 1993 will be held Sept 11/12. Lu Cave, tournament champion, pitched the high game of 37 ringers of forty shoes!!!! Congratulations to Lu. Ralph Maylahn traveled through two time zones and 14 counties to reach Centuria! A special thanks to all the scorekeepers. Your help makes our tournament run smoothly as well as on schedule. THANKS!!!!



Wet and wild T.D., Jane Smith

## PROPOSAL

Resolved: The WHPA should:

1. Keep averages on only NHPA tournament pitchers.
2. Collect the 50¢ fee on only Wisconsin pitchers.
3. Require 3 NHPA tournaments for State T entry.

For or Against? Pro or Con? To be or not to Be?

Next time out this NEWSLETTER is reserving space for your reactions and comments.

YEA! Its about time the nucleus of the WHPA starts taking care of their own. Aren't we the ones who pay the bills?

BOO! Sure we pay the bills but all pitchers in all tournaments including our non-sanctioned tournaments pay the WHPA 50¢ for each tournament pitched.

OK OK I'm an NHPA member : You're an NHPA member. Its good for you : Its good for me. 99% of the WHPA are NHPA members. More tournaments will be sanctioned and we will get even more members.

BOO! Our club was instrumental in the beginning of the WHPA. Yes I'm an NHPA member but many of my club members are not. Are you telling me our tournament is just for practice?

OK! If your club has been with the WHPA for so long, it should be running a sanctioned tournament, then all your club members would be NHPA members and your tournament would qualify for entry into the State Tournament and The World Tournament.

NO! If our club tried an NHPA sanctioned tournament quite a few members would quit. There's lots of tavern leagues to pitch in too. Besides its as much my WHPA as it is anybody's and I would rather not lose any members or any tournaments from the present schedule. I like it the way it is.

YES! The NHPA will accept only results and pitchers averages from sanctioned tournaments. An NHPA average is based on the 3 highest tournaments pitched in the last 12 months. Why should we ask John Secord to keep track of anything else. Let's keep it simple and our State average will also be our National average. If there are a few clubs that absolutely cannot accept full NHPA membership then so be it. When individuals become more interested as tournament pitchers they may then become NHPA members as most tournaments will require the card number.

NEGATIVE! There will always be some tournaments that are un-sanctioned. For those tournaments and to pitch against those people we need an accurate tournament average. Where will it come from if they are not on the list? Will they be the sandbaggers of the future? I feel protected from kitchen table averages when even the occasional tournament pitcher is included on the WHPA list.

PRO CHANGE I understand your concern for your friends who are not NHPA members. If not, why not. Over the years you, through your NHPA membership, have supported all the promotional aspects of the NHPA. Some of your friends are not sharing their part of the load. Should you continue to do it for them? Can you see this change as one more reason to become an NHPA member? Perhaps this is all the added incentive needed for some pitchers to finally join you in supporting organized horseshoes.

NOPE! This new selective method of retaining statistics appears to be a new line in the sand. Cross it and you pay. Want your average kept by the WHPA? Join the NHPA. Are we for the NHPA or are they for us. I, for one, am an NHPA member because we of the WHPA voted to have our State Tournament recognized by the National organization. I pitch in enough tournaments in my area to qualify for our State Tournament. I am not interested in traveling to the World Tournaments wherever they are. Qualification for the World Tournament would not be a problem but I am more interested in local competition. I support the WHPA. I do not have a problem with others who are not tournament pitchers and do not join the NHPA. Everyone has to start somewhere. We are going to cut off the entry level if we effect the changes proposed.

ALL RIGHT ALREADY! May I point out that the NHPA is us - not they. And I agree, we are creating a new level of membership. We are upgrading the WHPA to NHPA status. As a result more pitchers would align with the State and National organizations. More pitchers would be apt to attend more tournaments and maybe want to participate in the World Tournaments. (Don't knock it if you haven't tried it.) The WORLD is the premier horseshoe promotional event of every year. Leagues are the place for beginning pitchers. Unless you have a sanctioned league, your first time members have no fees other than those your club imposes. Sanctioned league clubs have no problem with the proposal outlined. They originate as NHPA members.

NOT CONVINCED Clubs should pay the 50¢ even for out of state entries. We figure its part of the entry that should go the WHPA. Its easy for those of you that belong to Sanctioned League clubs to back this proposal. You think you have nothing to lose but have you considered where the competition will come from? You depend on other clubs to continue to produce new pitchers yet you back a proposal that threatens to polarize the sport. I believe we are entitled to see our non-sanctioned tournament on the WHPA schedule recognized as worthy.

**CALENDAR**

**DEC 12 ARENA DOUBLES** Entry \$10/team  
Tip Wipperfurth, HY K - 6010, Waunakee, WI 53597  
608-849-4255 INDOOR Limit 16 teams Deadline 12-11

**DEC 5 HOLIDAY SPECIAL (NASHVILLE, TN)** Entry \$13  
Mary Bastian 3730 Old Charlotte Pike, Franklin, TN  
37064 (615) 794-5620 INDOOR Pregister/Show-up 10:30AM

**JAN 9 JIM CONNER OPEN (NASHVILLE, TN)**  
Mary Bastian etc, etc Entry \$13

**JAN 10-14 HACIENDA VEGAS OPEN** Ent \$60, aft 12/15 \$75  
Vegas Open, 5025 S Eastern, #16, Bx 250, Las Vegas, NV  
89119 Don Weaver, 702-736-7348 INDOOR, D/L 1-10, 5 PM

**JAN 16 WHITING SINGLES TOURNEY** Entry \$11.50  
Whiting H S Club, 1523 Atchison Av, Whiting, IN 46394  
Larry, 219-659-1632 INDOOR Deadline 1/9

**JAN 16 ARENA DOUBLES** Entry \$10/team  
Tip Wipperfurth Deadline 1/15

**JAN 16 FLOYD MAXWELL OPEN (NASHVILLE)** Entry \$13  
Mary Bastian etc,

**FEB 20 NHPA DOUBLES - ARENA** Entry \$20/team  
Jim Haupt 5075 N Elkhart Av, Milw, WI 53217  
414-964-2735 Limit 32 teams Deadline 2/6

**FEB 27 GILBERTSON'S 80% DOUBLES** Entry \$10/team  
Carl Gilbertson 521 Isabell, Highland, WI 53543  
608-929-7669 Limit 16 teams; 40 shoe count-all

**MAR 20 SPRING MEETING OPEN - PLOVER** Entry \$15  
Dan Jaglowski 1230 Wisteria La Waukesha, WI 53186  
414-549-4771 Indoor - NHPA -Limit 36 Deadline 3/6

Next issue The NEWSLETTER will carry the Official  
1993 WHPA SCHEDULE. We are waiting for confirmation  
of only one more tournament date. The list includes  
just one new tournament registered.

**D & G DOUBLES  
HIGHLAND**

Highland, southwest of Arena, is part of the unglaciated section of Wisconsin. Source unknown, Horseshoes and pitchers flourish in the area. This Indian Summer Saturday, in early October, they came together in the town park; behind the church and houses and also bordered by the fields. Its nicely wooded and a pleasant place to toss some shoes.

The stakes are a variety of spent axles and wood plank platforms were unique but also were firm and true. Thirty footers had to pitch from the sod. So its not a 'pro' set-up; then again we are not exactly pro's either.

Ordinarily its a Noon start and one shift. This year the four sand courts did double duty with a "B" and "A" class.

Carl Gilbertson, organizer, ran the show and the score-book, keeping wins and losses and total points. Highland is home for Gilbertson and former hometown for both pitchers of the number one Class "B" team. Some women were impressed with Betty Dennison of Madison. They wanted to know if she did a tournament every Summer weekend.

Another good looking pitcher was the Boy's State Champ for three years running, Mark Mauthe. He has made the switch to 40' and still has that easy looking shoe. Mauthe will be staking a claim for a spot in the Championship Men's class at the F.D.L. State Tournament in '93.

**RESULTS (in the money)**

**B CLASS**

- 1 Mouse Beckius and Betty Dennison
- 2 Leo Richter and Dick Anderson
- 3 John Aschliman and Ted Borgen
- 4 Gordon Parchum and JULIO

**A CLASS**

- 1 Emmett Whiting and Jim Haupt
- 2 Buck Huffman and Carl Gilbertson
- 3 Norm Mauthe and Mark Mauthe
- 4 John Barden and Arnie Walton

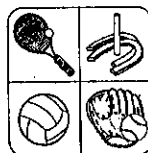


**WISCONSIN HORSESHOE  
Pitching Subdistributors**

**GAME RELATED ITEMS**

**Elaine & Cliff Troullier**  
3126 Wagon Wheel Road, Manitowoc, WI 54220  
(414) 682-3197

*(The PAUL NEUMANN display)*



**Royal  
Wood**  
SPORTS CENTER

**WISCONSIN  
HORSESHOE**

**HALL  
OF  
FAME**

1501 CEDAR DR., PLOVER, WI  
715-341-8950 - GROUP PARTIES

**INDOOR HORSESHOE CLAY COURTS**

**Eau Claire Club Wins State  
Tournament Club Competition  
AGAIN!!!!**

It wasn't a fluke the first time the Eau Claire Horseshoe pitchers were winners of this new competition at the State tournament. They repeated in 1992 featuring some of the same pitchers as in 1990. Congratulations to Roger Romero, Debby Bestul, Bert Logsdon, and Kyle Kent for their class championships and to Richard Pichler, Ev Goshaw, Bob Anderson, Kathy Hanson, Lowell Kent, Curt Bestul, and Dennis Kieser for their fingers. Eau Claire had eleven pitchers and an average of 6.454 winning points. Six other clubs participated with Plattville and Combined Locks the rookies. Beloit had the record of 29 pitchers the most ever from any club to participate. The remaining clubs fell into the following places

2nd	Marshfield	5 pitchers	6.20
3rd	CDCHC	11 pitchers	5.54
4th	Goldendale	16 pitchers	5.21
5th	Plattville	9 pitchers	4.77
6th	Beloit	29 pitchers	4.48
7th	Combined Locks	8 pitchers	4.0

Congratulations to all participating in this FUN competition and THANKS for your support in organized horseshoes.

Expenses: \$7.50 1991 winner entry  
4.00 postage  
15.00 buttons 1992 winners  
26.50

PRIZES: Eau Claire free entry 1993  
tournament  
certificate  
1st place  
\$10.00 cash  
Marshfield certificate / \$5.50  
CDCHC certificate / \$3.00  
all other clubs certificates

**BIG APPLE DOUBLES**

This tournament was set-up well in advance, - before State Tournament time where Cliff Troullier began to accept entries. So where were all the pitchers? Once again there was only one class pitching the Big Apple doubles, regardless, we had two divisions. Winners:

"A" division; Steve Wiegert and Dick Hanold  
"B" division; Curt Behrends and Norb Strzyzewski

There's plenty of room in this sports bar building. What was one indoor volleyball court has become two. In the words of Dick Hanold on seeing the recent addition, "Oh I see, they moved the outside in."

Now there are two permanent horseshoe courts and two sand volleyball courts. The owner's aim is to add two more temporary horseshoe courts so that volleyball and horseshoes can be conducted simultaneously, all indoors.

Harold Laws and the Mouse Berckius, two guys from Beloit, logged the most miles this time.

**NHPA  
FALL SINGLES, SANDBAR**

The Arena Sandbar began the indoor season this fall with the October Fall Singles. Monica Reeve took over as tournament director while Norm Mauthe remained in the background allowing Reeve to do her mission.

Mauthe had an elk hunting trip booked, was already growing the mandatory beard, and was quick to approve Reeve's promotion. He has done the sport of horseshoes a service introducing the tournament format to the Sandbar. Hopefully Reeve can continue to promote the indoor schedule. We need those sanctioned tournaments for the World of Spearfish.

Items 'For Sale' this weekend at the Sandbar: Tony Scrima, as always, offered a few horseshoe tote boxes, Ralph Maylahn hung up three pair of reconditioned shoes, and Kathy Huffman showed a sample of her inventory - five canaries. Prices were \$25, \$15, and \$50 per item from the respective merchants. Huffman made at least one sale, to Mr and Mrs Larry Barber of Rhinelander. Scrima's and Maylahn's sales records are unknown. Hopefully this is not a signal to LaVern Edge that OK to sell hogs.

**RESULTS**

A	Ray Hill	68.7	Ralph Maylahn	73.1
B	Gerald Weikert	55.4	Tony Scrima	50.1
C	Arnie Walton	55.1	John Barden	50.0
D	Jerry Volz	54.3	Ken Olson	42.6
E	Jim Larson	52.6	Ken Amble	32.9
F	Dan Jaglowski	35.7	Steve Stevens	39.4
G	Fred Decorah	38.0	Dave Miller	37.1
H	Harland Ray	32.3	Jamie Blynn	19.4

**Juniors:**

A	Jason Goldsmith	46.7	Penny Steinke	38.3
---	-----------------	------	---------------	------

Thanks for coming. Hope to see you next yr April 3-4.

**NHPA INDOOR DOUBLES**

**SAT, FEB 20th** Entry \$20/team

**ARENA SANDBAR** Deadline 2/6

**Bring Your Own Partner** limit 110%

**Classes for all percentage pitchers**  
30 foot pitchers may be mixed

**Cash Awards;**  
Guaranteed; 100% remains in class  
Entry limit; 32 teams

**This tournament is NHPA SANCTIONED**  
**Qualifies for WORLD / STATE entry**

5075 N Elkhart Av Milw, WI 53217  
JIM HAUPT 414-964-2735

**REFLECTIONS '92 SEASON**

BY JANE SMITH

The past year has been a good year for Wisconsin Horseshoes. We were well represented at the World Tournament; we had nearly 200 pitchers in the State Tournament; we had more NHPA sanctioned tournaments than 1991; we had more participants in the Team Tournaments (Club, World); we have a new Pitcher of the year; we have a very deserving Hall of Fame inductees (John, [Jane]); we have a banner boasting of Wisconsin Horseshoe pitchers; we have a President with considerable patience at our meetings and a great drive to improve our sport; we have a FEW dedicated members attending these state meetings.

We need better representation at these meetings. This is our organization. If we want to improve on a system we have to attend these meetings so our organization can continue to grow and prosper. Our Fall meeting was interesting as many new and good ideas were expressed. Many of the ideas were tabled to the Spring meeting. We need your input. Please read the proposals and be prepared to attend the Spring Meeting in March. Maybe even participate in a tournament directed by Dan Jajlowski - who did an excellent job this October.

In closing I would like to take this opportunity to thank Ann Opsteen, the Hall of Fame committee and anyone responsible for my nomination and eventual induction. It is a great honor to be among this elite group of people. THANKS!

**LETTER**

Hi Sue;

During our tourney last August a number of the old timers asked if we knew anything about our own "Chum Lubka", well it turned out that he and his wife are living in a nursing home in Stephenson, Michigan. They both are in their eighties and in very sound mind but have spells of depression and was wondering if you would write his name and address so some of the old timers would drop him a line.

It was Chum and Swen Bowman who made these horseshoe courts possible for all of us to enjoy...

Gil Genke, Mountain

Albert "Chum" & Cleora Lubka  
Roubal Nursing Home  
RR # 1 Box 32  
Stephenson, MI 49887

EDITOR'S NOTE: Thanks for the information about Chum. There are a lot of us that remember Chum. I'm going to put his name on our subscriber list so he will be able to keep up on horseshoe in Wisconsin. He was also active with the tournament in Green Bay when Swen Bowman was the T.D.

Susie,

Enclosed is check for \$7.00 for my dues for next years newsletter about horseshoes. It is my only link with whats going on in the rest of the state with horseshoes. Keep up the good work.

Ted Rohde, La Crosse

**MEMO****SUBSCRIBERS**

As you can see on the newsletter cover, this is the November issue.

Where's the issue for October? We decided to have a newsletter in May in place of Oct.

Our next issue will be coming to you in January.

Thanks for your support all year long and Happy Holidays to all of you!

Susie Pritzlaff  
Jim Haupt



**GILBERTSON'S DOUBLES**

Eighty-percent was the top combined percentage limit allowed at Carl Gilbertson's Sandbar party. The Arena house would, and does, overflow with "A" pitchers when there is no percentage limit for doubles teams. Gilbertson wants to create some matched competition among the 'run of the mill' guys. So when all pitchers go against all comers, a percentage limit levels the field somewhat.

Fourteen teams came to Arena the second Saturday in October. Ther were only a couple of pitchers capable of tossing fifty percent. Twenty to forty percent was common. Neither pitcher on the winning team, as it turned out, had an entry average of more than forty percent but they combined for 73.6%.

Each team pitched forty shoes and thirteen games. It took most of the day.

Len Mauthe must be on to a new technical advantage. He was observed painting the stakes on court four, muttering something about not covering... The dawn came when he was on the second stake. The blue and yellow aerosal can was actually WD-40! - BOTH STAKES!

Gilbertson himself tried to make everybody a winner. Used to a normal 16-team field, he began the cash awards with eighth place. Somewhere near the top Glibertson said, Whoa guys, I need some of that money back. There's nothing left for the winners!

**RESULTS**

- 1. Tip Wipperfurth & Robert C Anderson won 12 ga
- 2. Mark Mauthe & Fred Decorah (435 pts) won 10 ga
- 3. Ted & Jim Larson (424 pts) won 10 ga
- 4. Arnie Walton & Geo Dorn (368 pts) won 10 ga
- 5. Len Mauthe & Ken Olson won 9 ga
- 6. Art Waller & Jim Haupt won 8 ga
- 7. Carl Gilbertson & Orville Baker won 7 ga
- 8. Tony Scrima & Tom Steinke won 6 ga

**WIPPERFURTH'S**

**WIPPERFURTH'S 21 POINT DOUBLES AT ARENA**

Tip Wipperfurth opened the Arena indoor season with the first of his monthly doubles series. Total points up to 21 per game are recorded to break ties occurring in the win loss column. This November gang is the regular group. Most are expected to be on hand for the December edition. New pitching teams are waiting to get on this roster now limited to 16 teams. See the calendar for other tournaments available.

Best looking shoes of the day came from Julian Tyrena and Jim Larson. Best looking and most appreciated person of the day - Doug Stittleburg's first wife.

**RESULTS:** paid eight places; entry \$15/team; 1st=\$50

- 1st Arnie Walton and John Barden 14-1
- 2nd Mark Mauthe and Norm Mauthe 13-2
- 3rd Jerry Volz and Rick Weller 10-5
- 4th Vern Thompson and Doug Stittleburg 10-5
- 5th Len Mauthe and Buck Huffman 10-5
- 6th Dale Bauer and Tip Wipperfurth 10-5
- 7th Julian Tyerena and Fred Decorah 7-8
- 8th Bun Carley and Ron Yttri 7-8



**MERRY  
CHRISTMAS**



**BURT TROPHIES, INC.**  
 10885 Trophy Lane & E. 29th St.  
 Marshfield, Wisconsin 54449  
 Telephone 715 384-5839

Call or write us for all your award needs. Write for free color catalog.



6111 MAGNOLIA DRIVE  
 WISCONSIN RAPIDS, WISCONSIN 54494

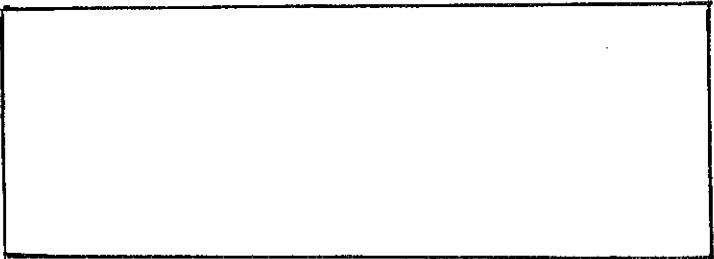
OFFICE: (414) 771-3750  
 HOME: (715) 423-4522

**CHRISTOPHER J. KITTI**  
 INVESTMENT PLANNER

 **Charter Investment Services, Inc.**  
 AFFILIATED WITH CAPITAL FINANCIAL SERVICES, INC.  
 2323 N. MAYFAIR ROAD, SUITE 502  
 MILWAUKEE, WISCONSIN 53226

WISCONSIN HORSESHOE NEWSLETTER  
W204 N11912 GOLDENDALE ROAD  
GERMANTOWN, WI 53022

BULK RATE  
U.S. POSTAGE  
**PAID**  
PERMIT NO. 25  
GERMANTOWN, WI  
53022



CHECK OUT THE NEW EXPANDED  
FACILITIES!

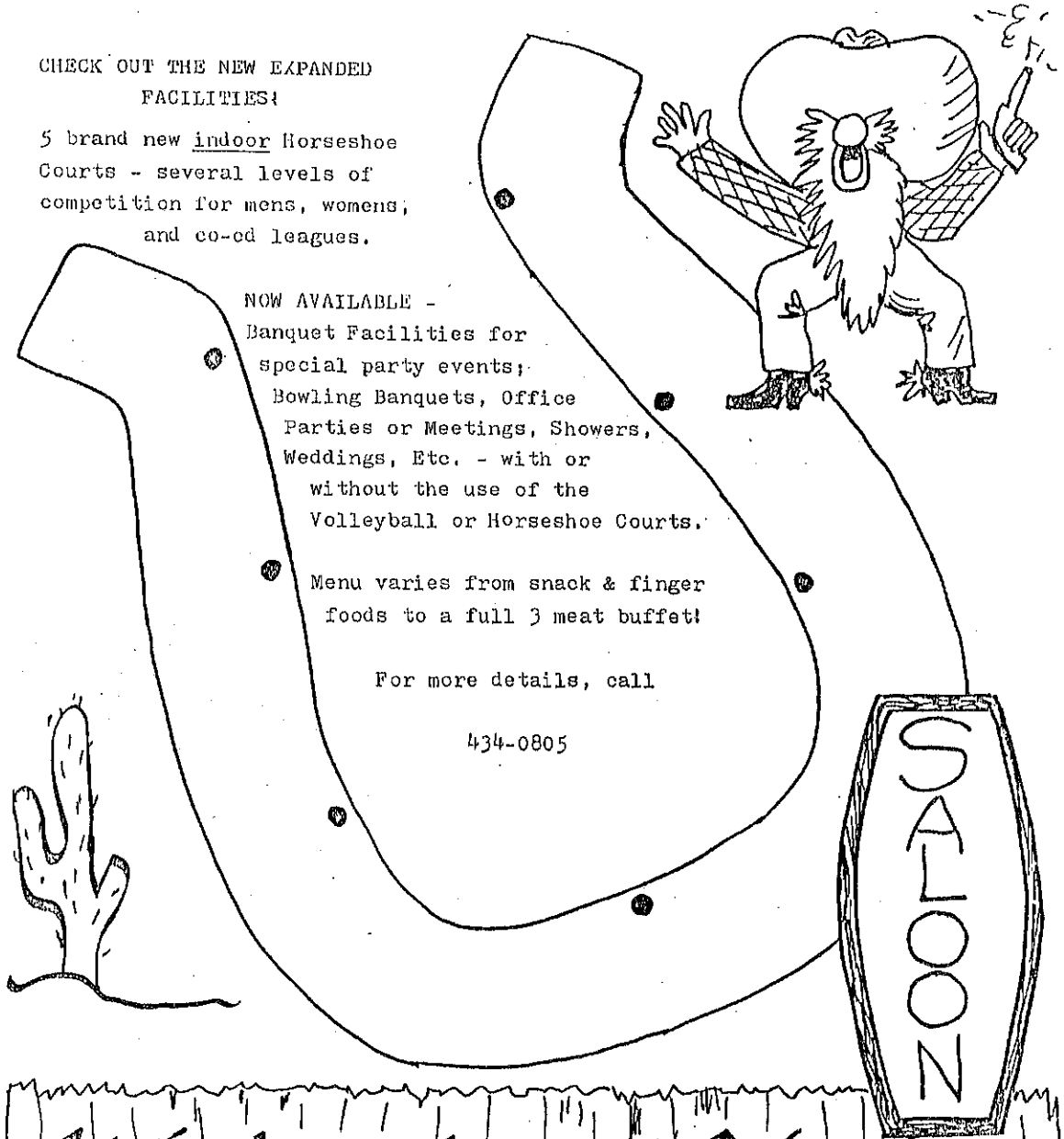
5 brand new indoor Horseshoe  
Courts - several levels of  
competition for mens, womens;  
and co-ed leagues.

NOW AVAILABLE -  
Banquet Facilities for  
special party events;  
Bowling Banquets, Office  
Parties or Meetings, Showers,  
Weddings, Etc. - with or  
without the use of the  
Volleyball or Horseshoe Courts.

Menu varies from snack & finger  
foods to a full 3 meat buffet!

For more details, call

434-0805



Watering Hole  
2107 Velp Ave. Green Bay, WI