

## 1990 STATE TOURNAMENT

Three new state champions emerged. Two defending state champs repeated. Pitchers enjoying the Labor Day weekend and splendid Eau Claire courts, were at peak performance. Ringer percentages were markedly higher. The Eau Claire State Tournament of 1990 was a class act.

**Randy Rein** of Mosinee won 10 of 11 games with a 'present day' high ringer percent to become the new men's Champion.

**Jane Smith**, Balsam Lake, lost her first game but retained her title in a play-off match.

**Mark Mauthe** of Platteville dethroned Kenny Jaeger for the Boy's State Title.

**Pam Steinke** of Waukesha upset Renee Sternberg to become the Girl's State Champ.

**Sid Anderson**, Janesville, lost only one game, was forced into a play-off, but repeated as Senior Men's Champion.

**Harold Bestul** who won the big one at these courts in 1983, pitched this time in the Senior class beating Anderson.

**Rudy Larson**, a forty-footer like Bestul, lost the play-off to the Janesville grass cutter. Add Anderson to the Sr. Champ's list one more time.

Surprise, surprise, **Mark Mauthe** gave **Kenny Jaeger** notice : Go to forty feet. Mauthe is only fourteen years old. Chances are he will be the new power of the junior class. His brother **Jeff** is already toughing it out at forty feet and it appears he will have a three year head start on the new champion.

A similar situation occurred in the Junior Girl's class. **Renee Sternberg** lost the State Title after being ranked #2 in the World for the past two years. Her next move will be to women's class. **Pam Steinke**, the new champion, will have to look over her shoulder from time to time. Her sister, **Penny**, and two more **Sternberg's**, **Heidi** and **Heather**, may seek to emulate.

The new Girls State Champion shared her success with **Ralph Maylahn**, her personal pitching tutor.

CONTINUED PAGE 3

R  
A  
N  
D  
Y  
  
R  
E  
I  
N



J  
A  
N  
E  
  
S  
M  
I  
T  
H



**WHPA OFFICERS**

**PRESIDENT**

Richard Hansen  
3085 S. 76th St.  
Franksville, WI 53126

**1ST VICE PRESIDENT**

Jane Smith  
R.R. Box 17  
Balsam Lake, WI 54810

**HALL OF FAME**

Ann Opsteen  
304 Williams St.  
Combined Locks, WI 54113

**SECRETARY-TREASURER**

John Secord  
W6868 Brown Rd.  
Fond du Lac, WI 54935

**2ND VICE PRESIDENT**

Curt Bestul  
1412 Sherwin Rd.  
Eau Claire, WI 54701

**SCHOLARSHIP FUND**

Lorraine Sternberg  
W206 N13520 Woodside Lane  
Richfield, WI 53076

**NHPA REGIONAL DIRECTORS**

Jim Haupt  
5075 N. Elkhart Ave.  
Milwaukee, WI 53217

Jane Smith  
R.R. Box 17  
Balsam Lake, WI 54810

**WISCONSIN HORSESHOE NEWSLETTER**

W204 N11912 Goldendale Rd.  
Germantown, WI 53022

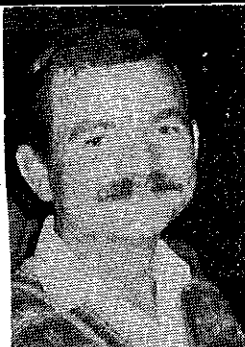
**EDITOR/PUBLISHER**

Susie Pritzlaff

**STAFF/WRITER**

Jim Haupt

Published eight times annually @ \$5.00/yr.



**DICK HANSEN  
WHPA  
PRESIDENT**

The 1990 State Tournament is now past history. The meeting is over and all the State Champs have been crowned. My congratulations to all the 1990 State Champs, you all showed your hard work and dedication to the sport in winning your titles.

The tournament committee did an outstanding job of staying on-time. No rain, no wind and some of the best clay courts you will find anywhere made for some very respectable percentages in all classes. The Eau Claire club and T.D. Kent Anderson ran another fine State Tournament. Thank you to all that helped make it outstanding.

Some Changes were made at the State Meeting. All of them, I feel, will make the WHPA 1991 State Tournament better. New format for the mens championship class, larger womens championship class, and more freedom in seeding the junior classes are just a few of the many decisions made. The meeting was over three hours and there was much discussion on moving the State Meeting out of the State Tournament time frame. There are good and bad points to this problem. We lose a half day of pitching time or we may lose some attendance. I have my doubts the latter is the case. There were over 200 WHPA members in Eau Claire for the State Tournament yet only about 20% came to the meeting. That number is only 10 or 15 more than attend the spring meeting. If you have an opinion on this, let me know. If entries grow in the State Tournament, we may someday have to consider Friday night pitching or longer nights on Saturday and Sunday. Again, let me know your opinion.

The WHPA Pitcher-of-the-Year award will go again in 1991. I have already started inputing the August tournaments and hope to publish the top ten list in the Newsletter three or four times a year.

Hope to see many of you this fall and Winter at the Royal Wood tournaments. Our support of these tournaments will keep horseshoes alive in Wisconsin when it's 10° below!

**EDITOR'S NOTE:** Due to a timely situation there will be a December issue of this newsletter instead of the September issue. The November issue will have the tournament averages for Wisconsin Members.




**BURT TROPHIES, INC.**  
10885 Trophy Lane & E. 29th St.  
Marshfield, Wisconsin 54449  
Telephone 715 384-5839

Call or write us for all your award needs. Write for free color catalog.



**NHPA APPROVED**



**R. PETE DONOHO**  
704 State St.  
Redding, CA 96001  
Bus. (916) 243-5761

**B**

**CAL FLIP**  
High Grade Steel and Stainless Steel  
2 lb. 9 oz. only

**Guaranteed one year Stainless Steel only**  
USA Pat. 288-575

Made in U.S.A.  
Richmond, CA

STATE CONTINUED

Jane Smith received an early warning from the Stevens Point lady, Gladie Lila. Smith lost pitching 34 ringers to Lila's 35 - a personal record for Lila. Later Smith recalled the first round loss when facing Lorraine Sternberg, the tournament leader with all "w"'s and a 41 ringer game to her credit. This was to be Smith's day as she defeated Sternberg twice, the second time in a convincing play-off game of 38 ringers. Pitching 75%, Jane Smith became the 1990 Womens State Champ...And the all-class high percentage pitcher in the State.

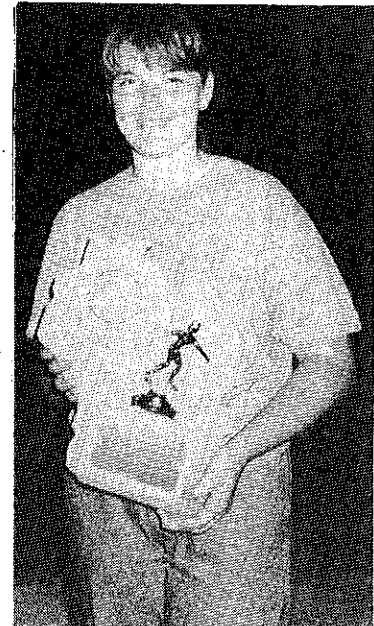
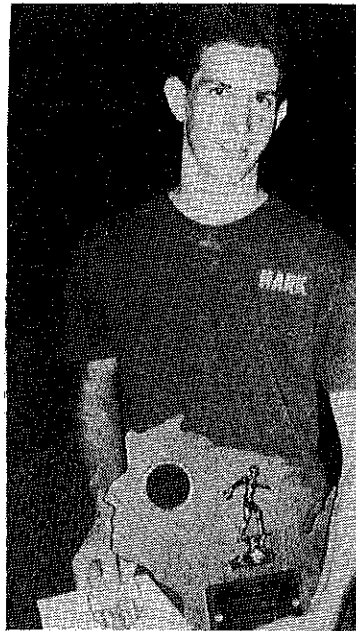
Randy Rein's way through the champions class was not without challenge. The second day Rein and Ralph Maylahn, both undefeated, were matched in the opening game. A short time before Maylahn had been inducted into the Hall of Fame. Memories of his last State Title were wearing thin. Maylahn wanted this game.

Rein was behind but less than a ringer with two shoes left. They were coming off a four-dead call. Rein doubled: Maylahn had to cover it. The second shoe found too much iron and danced away. The Bull-of-the-Woods lost. It was the pivotal game of the day and the class.

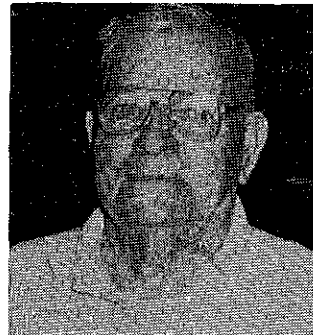
Mark Stevens in the next to the last round, and no longer able to claim the title, laid on a class "A" bunch of ringers while Rein struggled with a "B" offering. That was Rein's first red "L". One more would equal Brian Repinski's pace.

John Udelhofen was urged, by some, to be the spoiler in the final round. It went to the last frame of "down and back" Udelhofen had come from behind to make it a close game. He was pitching what he beleived to be the last two shoes. Rein, pitching first, left an opening with only one shoe on. Udelhofen thought it was a must double situation. After his first shoe missed, it appeared the follower was too hasty. Only when Udelhofen offered the congratulatory handshake did he find there were still two shoes to pitch. The swing had gone to Rein who came back with a close-out double. With that Randy Rein became the 1990 State Champ.

JUNIOR STATE CHAMPS




MARK MAUTHE PAM STEINKE



SENIOR CHAMP  
SID  
ANDERSON





**the national horseshoe pitchers association**

**Game Related Items**

WISCONSIN SUB-DISTRIBUTOR  
**PAUL NEUMANN**  
 111 Marcella Street  
 Oconomowoc, WI 53066  
 (414) 567-7001

Although horseshoes is just a game, it takes a heap of dialog to present the game in an acceptable manner. Forty some concerned members met Sunday morning at the Eau Claire Parks and Rec building to foster and nurture this animal we call the WHPA.

Let it be known the bank balance is in excess of \$7,500 reported Secretary John Secord.

The Scholarship Fund had an \$850 year. Lorraine Sternberg has about \$6,000 working and owes about one third of it to successful juniors. Kent Anderson interrupted making the proceeds from the 'State' program book an official donation of the Eau Claire club. When the donation is \$450, one is allowed to do it with some ceremony.

Two important measures would come later at this meeting that should be recognized now. - Non Profit status and State Tournament sponsorship.

Dick Hansen has two more months work to to effect a non-profit status for the WHPA. Starting next calendar year we can receive interest on our assets without being tax liable.

When asked, the gathered members gave approval to the host club of all State Tournaments to accept funds and sponsorship. Further, the WHPA would lay no claim to funds so garnered.

Thirteen items were introduced as new business. Briefly listed they follow.

A- Research the 1971 State Fair Tournament to determine if it would qualify as a State Tournament.

B- All NHPA sanctioned tournaments to be entered in the WHPA computer average. Received "Ayes". Will be player's responsibility to certify and report percentages to John Secord. No additional fee was discussed for this service.

C- Set the Spring Meeting date. O.K. Its February 16th at the Royal Wood Sports Center in Plover and in conjunction with an indoor tournament. See R.W. schedule.

D- Class A Women will increase to 12 players at future State Tournaments.

E AND F- Recind the seven game rule for Juniors at the State Tournament. Ayes.

- Recind the entire seven game rule. Ayes.  
G- Eight members voted to move the fall meeting time to other than the State weekend but 32 voted against. A number of members would prefer an evening meeting time.

H- A one year trial was granted to a new championship class format. The top 24

pitchers will be seeded into four six man groups to qualify by ringer percentage alone the first day. They will then return in three groups known as "A, B, C for the final seven games.

I- In an effort to disseminate the latest averages to tournament directors, John Secord agreed to send a new list prior to each tournament director's respective deadlne.

J- Ties in State tournament competition for other than first place will be determined by the result of the actual head to head game that had occured. It is in accordance with present 'World' practice.

K- Kent Anderson surveyed championship classes and reported over eighty percent of the returns favored point games. In accordance the members voted that all championship games will be forty points. (Senior class excluded)

In the year 1992, the BELOIT Horseshoe club wishes to host the State Tournament. There were no better offers so the WHPA membership gladly accepted.

Jane Smith must be doing a good job as first vice president judging by her landslide re-election. And there was no one crazy enough to run against John Secord so we had to re-elect him. Somebody's got to do it.

President Hansen thanked Kent Anderson and the Eau Claire Club for hosting this fine tournament. It was also pointed out that the Junior trophies, normally sponsored by the WHPA, were contributed free of charge by the Eau Claire club.

1991 - FOND du LAC

6111 Magnolia Drive  
Wisconsin Rapids, Wisconsin 54494

OFFICE: (414) 771-3750  
HOME: (414) 423-4522

**CHRISTOPHER J. KITTI**  
INVESTMENT PLANNER

 **Charter Investment Services, Inc.**

AFFILIATED WITH CAPITAL FINANCIAL SERVICES, INC.

2323 N. MAYFAIR ROAD, SUITE 502  
MILWAUKEE, WISCONSIN 53226

**Stocks, Bonds, Mutual Funds,  
Government Securities, Money Markets  
Tax for Securities  
Complete Financial Planning**

# Down And Back

The State Tournament and Labor Day often marks the end of league play for the horseshoe season. The weather in September and October is more often 'just right' for pitchin'. Why then are we so anxious to hang up the shoes?

Some will say the start of bowling season interferes. But the greatest bowler/pitcher of our day, Walter Ray Williams, is able to blend the common swings so that one compliments the other.

While bowling at Green Bay he inquired about the possibility of pitching at the Beloit-Janesville tournament. He asked specifically whether the Beloit was sanctioned by the NHPA. It was not and as we understand, he found a tournament in Iowa to enter.

So Bowlers, keep on pitchin' as long as the weather holds and it will sharpen your eye for the lanes.

And Tournament Directors please note; when your tournament is sanctioned, better pitchers will enter.

What happened to the mens defending champ? You may well ask.

Don Kangas? Sure he was there. Sixth place is unlike Kangas but he had to pitch on more than his share of doubles. Everyone gets up to beat the former champ. Second high ringer average of 69% plus attests to his potential under fire.

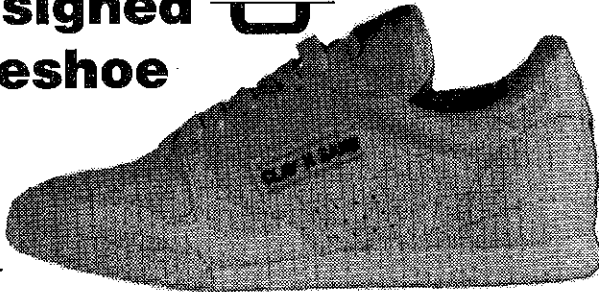
\* \* \*

We haven't seen any entry forms as yet but the Las Vegas Open is Scheduled for December 9 thru 14 at the Hascienda resort Matadoor room. Don Weaver says the courts will be the same synthetic clay, the format much the same with a few minor changes. Next issue of "Newslines" will have to carry the ad. Never fear this is one tournament where registration begins only after you get there.

\* \* \*

Sympathy cards were on display at the State Tournament for friends to sign. Harold Bestul's son and Paul Neumann's son passed away. Our condolences to both families.

## Try The First Shoe Designed for Horseshoe Pitching



- 100% super soft garment leather for excellent comfort and control.
- Shockproof, with soft midsole and wedge.
- Durable rubber outsole for strength and long wear.
- Heel support for greater strength.
- Terry cloth inside collar padded with urethane foam.
- Removable, replaceable Texon insole.

**ALSO MAKES A GREAT WALKING SHOE!**

**LET CLAY 'N SAND IMPROVE YOUR GAME**

### Order Your Clay 'N Sand Pitching Shoes Today

Men's 8 \_\_\_ 9 \_\_\_ 10 \_\_\_ 11 \_\_\_ 12 \_\_\_  
 8-1/2 \_\_\_ 9-1/2 \_\_\_ 10-1/2 \_\_\_ 11-1/2 \_\_\_ 12-1/2 \_\_\_

Women's 6 \_\_\_ 7 \_\_\_ 8 \_\_\_ 9 \_\_\_  
 6-1/2 \_\_\_ 7-1/2 \_\_\_ 8-1/2 \_\_\_ 9-1/2 \_\_\_  
 (Please Print Clearly)

Name \_\_\_\_\_

Address \_\_\_\_\_

City \_\_\_\_\_ State \_\_\_\_\_ Zip \_\_\_\_\_

Send check of \$40.00 plus \$5.00 shipping and handling to:

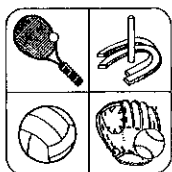
**CLAY 'N SAND, Inc.** 414/654-6404  
 6901 Sheridan Rd.  
 Kenosha, WI 53140

Wisconsin Residents add 5% Sales Tax

## BOB JACKSON

### PITCHER OF THE YEAR

- |                                   |     |
|-----------------------------------|-----|
| 1. Bob Jackson, Baraboo           | 140 |
| 2. Randy Rein, Mosinee            | 124 |
| 3. Faith Jackson, Baraboo         | 124 |
| 4. Don Kangas, Milwaukee          | 108 |
| 5. Tony Scrima, Waukesha          | 106 |
| 6. Bob Traber, Cedarburg          | 103 |
| 7. Ken Davison, Menomonee Falls   | 95  |
| 8. Cliff Troullier, Manitowoc     | 88  |
| 9. Jim Haupt, Milwaukee           | 86  |
| 10. Chet Ogiba, Mosinee           | 81  |
| 11. Gus Schram, Ringle            | 79  |
| 12. Ralph Maylahn, Genesee Depot  | 76  |
| 13. Hank Zeisse, Franklin         | 75  |
| 14. Brian Repinski, Plover        | 72  |
| 15. Terry Lokken, Beloit          | 71  |
| 16. Bill Hildebrand, Rosholt      | 68  |
| 17. Jane Smith, Balsam Lake       | 68  |
| 18. Debby Bestul, Eau Claire      | 67  |
| 19. Sid Anderson, Janesville      | 66  |
| 20. Norm Beckius, Beloit          | 66  |
| 21. Laverne Edge, Platteville     | 66  |
| 22. Gladie Lila, Stevens Point    | 65  |
| 23. Lorraine Sternberg, Richfield | 64  |
| 24. Gerald Weikert, Marshall      | 62  |



# Royal Wood

SPORTS CENTER

1501 Cedar Drive • P.O. Box 697  
Plover, WI 54467

## DOUG BERRY PRINTS NEW DATES FOR ROYAL WOOD

Horseshoe pitchers will help to announce the marketing of a new beer from the Stevens Point Brewery. Berry has enlisted the "Point" brewery as co-sponsors of the indoor horseshoe season at The Royal Wood Sports Center.

The new schedule will bear the name of the new beer. The Point All-American All Malt Beer Series.

Tournaments, one each month, will begin with **The Hall of Fame, November 10-11**. The entry fee for all tournaments is \$20. Deadlines are about two weeks prior. First deadline to remember is October 28.

The WHPA Hall of Fame display is being readied for public presentation at Royal Wood. Sample renderings of the proposed art work to enhance the display were seen at at the State Tournament. For the past two years the display has been in storage so this will be the grand unveiling. At the same time inductees, not previously honored, will actually place their own plaques within the display.

The **December 1 & 2** date will kickoff The Point All-American All Malt Beer Series. Points (not beers) will awarded to all pitchers participating, similar to the Player of the Year competition. One dollar from each entry fee will go to awards for the five tournaments in The Point All-American All Malt Beer Series.

Berry will publish dates and details but these two dates should be redlined lest they slip by before the schedule is prepared.

**Nov 10-11 Hall of Fame #28-90-016 d/1 10-28**

**Dec 1-2 POINT AAAMB #28-90-017 d/1 11-21-**

Note the tournaments this season are all NHPA sanctioned. Members, keep your card current. New people: Do not hesitate to enter a sanctioned tournament. The first time no card is necessary.

All right. Let's All have a POINT All-American All Malt Beer. If that label fits a shorty, it's on me.

## LYONS DAYS

Its still there, that little town near Burlington. The parade, the festival with games and good eats sponsored by the Jay-Cees remains the site of the annual Lyons Days Horseshoe Tournament.

Marty Christopherson got things going in 1976 and since its become a four court, double-elimination tournament. This year Terry Weis posted twenty-three doubles teams on the big board.

Team numbers, assigned by a drawing, coincidentally matched last year's runner-ups, Mike and Sue, with the defending champs Rich and Burt in the first round. Barefoot and tossing from forty feet, Sue and her partner Mike, suffered their first loss. It would keep them out of the finals and put Rich and Burt in. - Too bad, she's the only she on the board, and not too hard to look at.

Jack VanSwol and his partner had been two time winners here and were considered a threat until they dropped their second game.

A couple of flat-landers worked their way way through the losers bracket. Mitch and Boomer, although the name sounds tough were first to go ending up fourth. Ron and Augie succumbed next for third. Now the task was to give Rich and Burt two losses. It was no contest as Tony and Jim, the flat-landers waltzed through the two final games to become the new Lyons Day Champs.

## HALL OF FAMER

After a fall at home, Ed Wing is in a nursing home in Hartford. If anyone would like to write to him, his address is: Hartford Care Center, 1202 East Sumner, Hartford, WI 53027.

One Day Service  
Sales Incentives  
Awards, Trophies, Plaques

Manufacturer

### RUDIG OLYMPIC AWARDS

126 S. 2nd Street  
Milwaukee, WI 53204

Royce DeBow  
National Sales Manager

(414) 273-2727

# 1990 WISCONSIN STATE TOURNAMENT

## EAU CLAIRE

SEPTEMBER 1, 2 & 3

CHAMPIONSHIP MEN			W	L	R%	CLASS B MEN			W	L	R%
1	Randy Rein	Mosinee	10	1	70.36 <sup>2</sup>	1	Roger Comero	Cochrane	10	1	63.82
2	Brian Repinski	Plover	9	2	69.09 <sup>5</sup>	2	Kent Anderson	Eau Claire	9	2	59.45
3	Mark Stevens	Marengo	7	4	69.45 <sup>4</sup>	3	Tony Scrima	Waukesha	7	4	54.36
4	John Udelhofen	Platteville	7	4	66.36 <sup>1</sup>	4	Jim Haupt	Milwaukee	7	4	54.00
5	Ralph Maylahn	Genesee Depot	7	4	63.82 <sup>8</sup>	5	Don Goldsmith	Janesville	7	4	52.91
6	Don Kangas	West Allis	6	5	69.82 <sup>3</sup>	6	Gus Schram	Ringle	6	5	52.00
7	Marvin Huffman	Brodhead	5	6	60.36 <sup>12</sup>	7	Richard Brower	Burlington	5	6	54.55
8	Chet Ogilba	Mosinee	4	7	63.09 <sup>9</sup>	8	Vince Jakel	Spencer	4	7	54.55
9	Larry Barber	Rhineland	4	7	62.00 <sup>10</sup>	9	Rick Pritzlaff	Oak Creek	3	8	51.64
10	Norm Mauthe	Platteville	3	8	58.55	10	Mike Wiegert	Wausau	3	8	48.91
11	Bernard Carley	Edgerton	3	8	52.73	11	Al Lonning	Eau Claire	3	8	46.00
12	Roger Poutanen	Wausau	1	10	46.55	12	Jerry Volz	Reedsburg	2	9	39.27
CLASS C MEN						CLASS D MEN					
1	Ken Jaeger *	New London	5	2	49.71	1	Clayton Gage	Milltown	7	0	53.71
2	Tim Maule *	Independence	5	2	53.14	2	Dennis Ambuehl	Oconomowoc	5	2	44.86
3	Gene Mason *	Appleton	5	2	48.86	3	John Barden	Waunakee	4	3	50.29
4	Bob Jackson	Baraboo	4	3	49.43	4	Cliff Troullier	Manitowoc	4	3	45.43
5	Bill Schaaf	Chetek	4	3	46.29	5	Wes Taylor	West Bend	3	4	46.00
6	LaVerne Edge	Platteville	2	5	41.43	6	Wayne Vanderhel	Wauwatosa	2	5	42.86
7	Richard Hansen	Franksville	2	5	35.14	7	Norv Renley	Beloit	2	5	33.14
8	Richard Pichler	Mondovi	1	6	41.14	8	Bob Traber	Cedarburg	1	6	37.14
CLASS E MEN						CLASS F MEN					
1	Jim Bloemers	Fond du Lac	6	1	43.71	1	Jeff Secord	Fond du Lac	6	1	51.43
2	G Bogenschneider	Kenosha	5	2	46.57	2	Chuck Koehn	Manitowoc	5	2	41.71
3	Ken Davison	Menomonee Falls	4	3	34.86	3	Greg Bottlemey	Owen	4	3	47.14
4	Milt Larsen	Waukesha	3	4	40.29	4	Lowell Kent	Gilmonton	4	3	46.57
5	Dave Schorbahn	Independence	3	4	39.43	5	Bob Gregorich	Spencer	4	3	42.86
6	Mike Paulson	Eau Claire	3	4	38.29	6	Leonard Mauthe	Cuba City	2	5	42.57
7	Warren Knippel	Waukesha	2	5	43.71	7	Ken Olson	Platteville	2	5	39.14
8	Chris Kitti	Wis. Rapids	2	5	34.86	8	Marv Guetzke	Germantown	1	6	36.00
CLASS G MEN						CLASS H MEN					
1	Bob Jarosh *	Manitowoc	6	1	47.43	1	Ralph Gullingsrud	Eleva	6	1	40.00
2	Curt Bestul *	Eau Claire	6	1	44.29	2	Dennis Bach	Dorchester	5	2	43.71
3	Tom Modl	Eau Claire	4	3	43.71	3	Ron Brownell	Mondovi	4	3	39.14
4	Ralph Marthaler	Medford	4	3	42.57	4	David Heineck	Wis Rapids	4	3	38.86
5	Rolly Topper	Eleva	4	3	40.57	5	Tom Cutts	Janesville	3	4	35.14
6	Merrill Semingson	Arkansas	3	4	38.86	6	Dennis Kieser	Menomonie	2	5	36.00
7	Robert Anderson	Waunakee	1	6	27.43	7	Verne Thompson	Wonewoc	2	5	34.29
8	Terry Lokken	Beloit	0	7	33.43	8	Earl Paulson	Beloit	2	5	33.14

\* Denotes playoff



1990 WISCONSIN STATE TOURNAMENT  
- Continued -

CLASS I MEN			W	L	R%	CLASS J MEN			W	L	R%
1	Ted Rohde	LaCrosse	6	1	41.71	1	Paul Federer	Sun Prairie	6	1	38.29
2	John Secord	Fond du Lac	5	2	41.14	2	Leo Wipperfurth	Wauwaukee	5	2	40.29
3	Chet Hermansen	Madison	4	3	44.57	3	Dennis Jancoski	St. Francis	5	2	36.29
4	Michael Hansen	Tomahawk	4	3	41.14	4	George Eckstrom	Gilman	4	3	34.57
5	Bob Kallstrom	Arkansas	3	4	30.29	5	Norm Clark	Luck	4	3	34.29
6	Roger Juedes	Brokaw	2	5	38.86	6	Bill Hildebrand	Rosholt	2	5	23.71
7	Mal Barnitz	Wis. Rapids	2	5	27.60	7	Leo Zamzow	Fond du Lac	2	5	20.86
8	Norm Beckius	Beloit	2	5	26.86	8	Pacer		0	7	0.00

CLASS K MEN			CLASS L MEN								
1	Steve Stevens *	Marengo	5	2	40.57	1	Al Johnson	Eau Claire	7	0	39.43
2	Tom Leair *	Genesee Depot	5	2	39.14	2	Ed Richardson	Platteville	5	2	34.29
3	John Reuter, III	Platteville	4	3	38.00	3	Terry Sternberg	Richfield	5	2	31.14
4	Rick Weller	Wis. Dells	4	3	35.14	4	Cliff Lila	Stevens Point	3	4	34.86
5	Dale Heineck	Wis. Rapids	4	3	34.57	5	Chuck Hansen	Union Grove	3	4	33.71
6	Mike Cone	Baraboo	3	4	32.00	6	Rob Struebing	Campbellsport.	3	4	28.29
7	Don Burmeister	Brown Deer	2	5	28.29	7	Chuck Herman	Eagle	1	6	28.86
8	Richard Conrad	Pewaukee	1	6	33.43	8	Larry McCutcheon	Pewaukee	1	6	18.86

CLASS M MEN			CLASS N MEN								
1	Ron Ramquist	Beloit	5	2	32.86	1	Bill Thomas	Eau Claire	6	1	38.86
2	Larry Danielson	Roberts	4	3	36.86	2	DeWayne Hazen	Eau Claire	5	2	38.29
3	Harold Patton	West Bend	4	3	32.57	3	John Reuter Jr.	Platteville	5	2	34.29
4	Kevin Brekke	Stevens Point	4	3	28.86	4	Bud Kuhnert	Fall Creek	4	3	34.57
5	John Brophy	Galesville	2	5	33.71	5	Earl Heineck	Wis. Rapids	3	4	26.57
6	Harold Laws	Beloit	2	5	28.57	6	Orville Baker	Platteville	3	4	26.29
						7	Lyle Kent	Racine	2	5	27.43
						8	Ron Sabish Jr.	Campbellsport	0	7	19.67

CLASS O MEN			CLASS P MEN								
1	Merlin Ludwig	Medford	6	1	29.43	1	Roger Schultz	Marshfield	6	1	36.86
2	Gary Bloedorn	Fond du Lac	5	2	33.71	2	Dick Gilles	Stanley	5	2	34.57
3	Joel Bartley	West Bend	5	2	28.00	3	Hank Zeisse	Franklin	5	2	26.00
4	Dan Ebert	Fillmore	4	3	29.43	4	Graig Novinski	Mineral Point	4	3	30.86
5	Dan David	Auburndale	3	4	23.43	5	Bob Rehm	Eau Claire	3	4	27.14
6	Tim Bartley	Kewaskum	3	4	22.57	6	Wayne Franzen	Franklin	3	4	26.57
7	Bob Anderson	Eau Claire	2	5	22.57	7	Mel Cook	Stratford	2	5	22.86
8	Pacer		0	0	0.00	8	Pacer		0	0	0.00

CLASS Q MEN			CLASS R MEN								
1	Nelson Richason *	Galesville	6	1	29.43	1	Frank Dohrwardt	Lomira	6	1	26.29
2	Ron Zeppelin *	Stratford	6	1	30.29	2	Rick Horn	Eagle	5	2	24.57
3	Ivan Ruzic	Willard	5	2	33.14	3	Steve Bartley	Neosha	5	2	18.86
4	LeRoy Meyer	Appleton	4	3	24.86	4	Wayne Satonica	Owen	4	3	20.86
5	Jeff Mauthe	Platteville	3	4	21.14	5	Ralph Zeisse	Caledonia	3	4	16.57
6	Tom Steinke	Waukesha	2	5	20.29	6	Rex Hamann	Milwaukee	3	4	16.00
7	Gomer Massie	Chetek	1	6	18.57	7	Curt Novinski	Mineral Point	1	6	14.57
8	Karl Wegner	Milwaukee	1	6	17.43	8	Larry Unz	Mukwonago	1	6	6.00

\* Denotes Playoff





1990 WISCONSIN STATE TOURNAMENT

- Continued -

CHAMPIONSHIP WOMEN

		W	L	R%
1	Jane Smith *	6	1	75.71
2	Lorraine Sternberg*	6	1	67.14
3	Edith McKinney	5	2	61.71
4	Joan Guetzke	3	4	56.29
5	Gerri Meistad	3	4	54.00
6	Debby Bestul	2	5	54.29
7	Gladie Lila	2	5	46.29
8	Faith Jackson	1	6	52.86

CLASS B WOMEN

		W	L	R%
1	Suzanne Helene *	6	1	55.43
2	Ev Goshaw *	6	1	56.57
3	Shari Davison	4	3	53.14
4	Sylvia David	4	3	52.57
5	Karen Hoff	3	4	50.86
6	Carla McFarlane	2	5	47.14
7	Elaine Troullier	2	5	44.00
8	Sylvia Kaiser	1	6	42.86

CLASS C WOMEN

		W	L	R%
1	Ann Opsteen	6	1	46.86
2	Lynda Turner	5	2	42.86
3	Sonia Cook	5	2	37.43
4	Claretta Hansen	2	5	35.14
5	Debby Thompson	2	5	28.57
6	Cathy Kolpin	1	6	32.00

CLASS D WOMEN

		W	L	R%
1	Teresa Donar	7	0	31.71
2	Joan Struebing	4	3	37.43
3	Brenda Wistrom	4	3	26.86
4	Jane Meier	3	4	27.71
5	Gladie Nicholas	2	5	22.00
6	Cecelia Trossen	1	6	21.43

CLASS E WOMEN

		W	L	R%
1	Michelle Harder	7	0	47.71
2	Judy Harder	5	2	37.43
3	Sandy Meredig	4	3	33.14
4	Caryl Sass	2	5	16.86
5	Gwen Unz	2	5	16.86
6	Carmen Wozniak	1	6	16.29

CLASS A 70+ MEN

		W	L	R%
1	Sid Anderson *	4	1	48.00
2	Rudy Larson *	4	1	48.00
3	C.L. Ollerman	3	2	38.80
4	Harold Bestul	2	3	41.20
5	Royce Wrucke	2	3	30.80
6	Roy Nicholas	0	5	24.80

CHAMPIONSHIP JR. BOYS

		W	L	R%
1	Mark Mauthe	7	0	69.14
2	Ken Jaeger Jr.	6	1	66.29
3	Rick Poppe	5	2	46.86
4	Jason Goldsmith	3	4	34.00
5	Charlie Topper	3	4	32.86
6	David Carley	2	5	34.00
7	Justin Topper	1	6	29.43
8	Greg Topper	1	6	28.57

CLASS B JR BOYS

		W	L	R%
1	Tony Johnson	7	0	21.71
2	Adam Topper	6	1	20.00
3	David Hansen	5	2	17.43
4	Stuart Bennett	4	3	23.43
5	Randy Topper	3	4	11.43
6	Gary Volz	2	5	12.57
7	Jason Johnson	1	6	5.43
8	Chad Volz	0	7	6.00

CHAMPIONSHIP JR. GIRLS

		W	L	R%
1	Pam Steinke	7	0	40.00
2	Renee Sternberg	6	1	37.43
3	Heidi Sternberg	5	2	28.29
4	Marlie Hecimovich	3	4	18.57
5	Heather Sternberg	3	4	16.29
6	Hope Berg	2	5	15.14
7	Penny Steinke	2	5	12.86
8	Pacer	0	0	0.00

\* Denotes playoff

STATE TOURNAMENT

PROGRAM BOOKLET

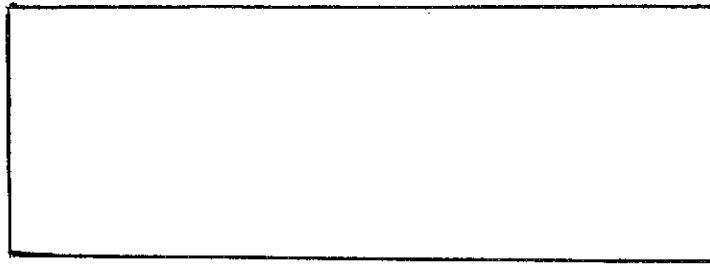
RECEIPTS GO TO SCHOLARSHIP FUND

This donation of \$450 is on behalf of the Eau Claire Horseshoe Club and it's members who raised the funds for the State Tournament program booklet. This amount represents the excess raised. A special thanks goes to the sponsors, the fund raisers, and to Al Lonning, the booklet director.



WISCONSIN HORSESHOE NEWSLETTER  
W204 N11912 GOLDENDALE ROAD  
GERMANTOWN, WI 53022

BULK RATE  
U.S. POSTAGE  
**PAID**  
PERMIT NO. 25  
GERMANTOWN, WI  
53022



CHECK OUT THE NEW EXPANDED  
FACILITIES!

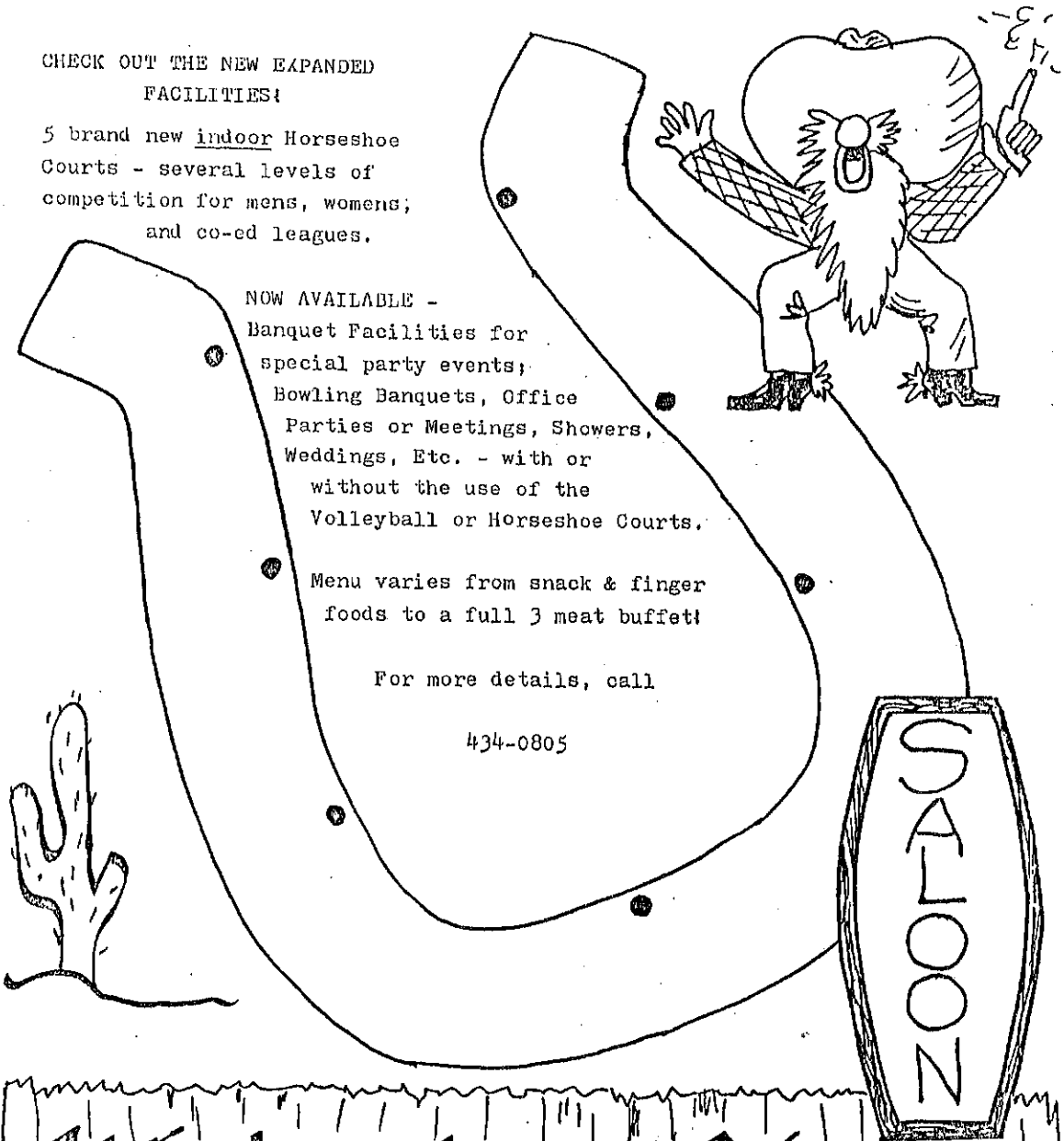
5 brand new indoor Horseshoe  
Courts - several levels of  
competition for mens, womens;  
and co-ed leagues.

NOW AVAILABLE -  
Banquet Facilities for  
special party events;  
Bowling Banquets, Office  
Parties or Meetings, Showers,  
Weddings, Etc. - with or  
without the use of the  
Volleyball or Horseshoe Courts.

Menu varies from snack & finger  
foods to a full 3 meat buffet!

For more details, call

434-0805



Watering Hole  
2107 Velp Ave. Green Bay, WI