

# WISCONSIN HORSESHOE NEWSLETTER

## 1995 SPRING MEETING

Only a few days into Spring the WHPA officially inaugurated the horseshoe season with a members meeting in Plover, WI at the Royal Wood Sports Center.

The place looks the same although ownership has changed. Once again there was a tournament but this time the "A" class played after the meeting. The new wrinkle by returning tournament director, Brian Repinski, kept a few more people from making an early exit.

First VP, Jane Smith was absent (with approval) but her cadre, the people North of 8, came in their usual numbers. The actual number of members attending the WHPA meeting was somewhere between 30 and 38. It was not established as President Dick Hansen called for mostly voice votes.

The Secretary-Treasurer's report was accepted as read. The 1994 year end balance is \$4000 plus and as a result of a Constitution change, the WHPA will begin publishing a financial report after the annual Fall Convention.

Junior Scholarship Fund reported an over \$10,000 account with near half committed. By simple math we can conclude that Lorraine Sternberg has more money than John Secord.

Now that Sternberg has maintained and built up the Scholarship for a number of years, she would like to turn the reins over to someone else. Great. She received a thankful round of applause but no volunteers came forward.

Secord may be in second place regarding bank balances but we have not heard of any intended retirement.

Schedule guy and Regional Director, Jim Haupt, has 36 sanction numbers working this year. A few are being saved for tournament directors not yet committed.

Another NHPA endeavor has been to establish a list locations of sanctioned courts. While lack of shorter distance platforms and or fences prevent sanctioning of some layouts, twenty Wisconsin clubs can expect a certificate sanctioning their courts.

Hansen recognized Terry Sternberg for his ten day production of exhibition Horseshoes at the Milwaukee Sport Show. This first attempt at bringing the game to the public proved to be a successful venture. Some clubs will gain a member or two directly attributable to the Show. Maximum effect is expected to be long term.

Jane Smith, doing her report by proxy, reminds tournament directors that she needs a copy of results from each tournament to tabulate for the Pitcher-of-the-Year competition. Early POY leaders are State Champions, Lorraine Sternberg with 55 points and Randy Rein at 45 points. A new point value has been assigned for 1995. Just the first three places earn points - 15 for first, 10 for second, and 5 for third - in sanctioned tournaments only.

Smith continues to work on Horseshoes for the Badger State Games. She expects three qualifying tournaments in early June of 1996 with the play-off tournament the latter part of June in the same week of the 1996 Badger State Games.

The NHPA 5th VP, Dick Hansen, doing his national job outlined the World Tournament entry window - April 3rd to May 15th.

Only tournaments completed prior to entry are considered concerning both percentage and qualification (4 required).

Contact a Regional Director for entry forms or housing information in the Perry, Georgia area.

Wisconsin will receive an award during the World Tournament for gaining the most members in 1994. Our NHPA year end number was, 477 - up 68 members. Hansen noted the gain is usually seen in the state that hosts the World Tournament as Wisconsin did with the 1987 Eau Claire World. My gosh, we've surpassed Indiana!

Probable reason, Hansen speculated, was the advent of Kenosha as a newly formed sanctioned club coupled with the return of the Goldendale club to sanctioned status.

Sanctioning a club is not difficult, Earl Paulson of Beloit explained, it requires only a members list at the beginning of the season. That's all it takes, one list. Then if the league wants to avail itself of the Sanctioned League award patches, send in the league results in the Fall. Paulson believes some pitchers forego the opportunity of a sanctioned league in fear of the paperwork when really its no problem. Ask a regional director for a little red book to get started. Paulson says its the easy way to go.

Hall of Fame inductee for 1995 was announced. He was the 1977 State Champion at age 17 -Open Men's Division- soon afterward he was elected President of the WHPA and served in that office for ten years retiring the position to Dick Hansen...Still guessing? It's RICK PRITZLAFF. Got to be the youngest inductee ever. The announcement came as a surprise but was immediately answered with ready applause.

This gathering is supposed to be about upgrading procedures and voting on the rules. It was all laid out on paper and with a little explanation by Hansen it went smooth as silk.

Hereafter:

1. Effective 1996, entry to our State Tournament will require three (3) sanctioned tournaments. (that's 1996)

2. State Tournament Championship class size will be handled by the Executive Board of the WHPA. (Expect to remain at 10.)

Another key executive is talking about stepping aside. Dick Hansen, NHPA 5th Vice President *and* WHPA President is considering dropping the latter part of his title. The job load is getting a little heavy. Who do you know, wants to be a President? Meeting adjourned. Time elapsed - a little over 2 hours.

NHPA officers up for election this year will not need your dollar for their campaign funds. The March 15 filing date is passed and no opposition materialized. Apparently running un-opposed are; Dick Hansen for 5th Vice President, Regional Directors Beverly Born for 3rd Vice President, Sanctioned League Director, Earl Winston for 1st Vice President, Hall of Fame. Dave Loucks for NHPA President, Ed/Publisher of Newslines.

### RESULTS : SPRING MEETING TOURNAMENT

A	EDIE MCKINNEY	4/1	61.2	GUS SCHRAM	3/2	52.0
B	SUE HELENE	5/0	54.0	ELAINE TROULLIER	3/2	43.6
C	FRED DECORAH	4/1	30.8	MIKE HANSEN	3/2	41.2
D	DENNIS BACH	4/1	27.2;	GREG WICKERSCHEIM	3/2	28.8
E	CARMEN WOZNAK	4/1	22.8	MERLIN LUDWIG		17.8

**WHPA OFFICERS****PRESIDENT**

Dick Hansen  
3085 S 76th St  
Franksville, WI 53126  
414-835-1321

**SEC-TREAS**

John Secord  
W6868 Brown Rd  
Fond du Lac, WI 54937  
414-922-0080

**1ST VICE PRESIDENT**

Jane Smith  
1481 180th Av  
Balsam Lake, WI 54810  
715-485-3057

**2ND VICE PRESIDENT**

Terry Sternberg  
W206 N13520 Woodside La  
Richfield, WI 53076  
414-677-3300

**HALL OF FAME**

Susie Pritzlaff  
W204 N11912 Goldendale RD  
Germantown, WI 53022  
414-628-1484

**SCHOLARSHIP FUND**

**JUNIOR PROGRAM DIR**  
Lorraine Sternberg  
W206 N13520 Woodside La  
Richfield, WI 53076  
414-677-3300

**NHPA REGIONAL DIRECTORS**

Jim Haupt	Jane Smith	Ken Jaeger
5075 N Elkhart Av	(above)	Rt 4 Knight Rd
Milwaukee, WI 53217		New London, WI 54961
414-964-2735		414-982-6287

**WISCONSIN HORSESHOE NEWSLETTER**

W204 N11912 Goldendale Rd  
Germantown, WI 53022  
414-628-1484

**EDITOR/PUBLISHER**  
SUSIE PRITZLAFF

**STAFF/WRITER**  
JIM HAAPT

*Published 8 times annually @ \$7/year*

**WHPA SCRAPBOOK**

The WHPA scrapbooks contain the history of horseshoe pitching in Wisconsin. Terry Sternberg will now be the safekeeper of these books. You can send to Terry any articles and pictures from newspapers, magazines etc., pertaining to our sport. His address appears above under WHPA Officers.

**PRESIDENT'S COLUMN**

by Dick Hansen

At the Spring meeting, March 25th, some changes were made to the WHPA Bylaws that will affect us all. Although it is more than likely printed elsewhere in this Newsletter, there is one change I feel may need to be repeated so we don't get any, "I didn't know that," statements. Starting with the 1996 State Tournament you will need three(3) NHPA sanctioned tournaments (not 2) to enter the State Tournament. With about 35 NHPA tournaments on the schedule it should not be a problem for anyone.

I will have a copy of the WHPA Bylaws available to anyone in about a month. If you or your club would like a copy, just drop me a line and I will send it to you. It was decided not to publish it in the Newsletter because of the cost. It's six pages long. It will take me some time to compile it as it was voted on, so give me some time to get it out.

In Other matters, the Hall Of Fame Committee has been somewhat restructured. That committee now includes all of the WHPA executive board members plus two members at large. The election will be done by voting by committee members rather than a round table discussion as in the past. A set of HOF guidelines has also been approved and will be published in the Newsletter in the future. As long as I am on the Hall of Fame, My congratulations to Rick Pritzlaff on becoming the 1995 inductee. Rick may be the youngest member ever inducted, but he is more than qualified both as a pitcher and promoter. Welcome to the Hall of Fame Rick.

I would like to thank those in attendance at the Spring Meeting for their cooperation in making this one of the most productive meetings that I have been involved with. Much was accomplished in a very short time. Those that choose not to attend should also choose not to complain.

One last word on the WHPA booth that was set up at the Milwaukee Sport Show. Thanks, Terry Sternberg, for a job well done.

Dick Hansen, President WHPA

**A BIG THANKS!**

BY TERRY STERNBERG

I can't thank everyone enough for helping out at the Sports Show. I feel the exhibit did what we hoped it would do, create interest in our sport and state association. It was enjoyable to talk horseshoes with people who would stop.

Jim Haupt's crew, Earl Paulson, Harold Laws, Wayne Franzen and Dick Hansen did a great job of setting up the exhibit just before show time. I appreciate the time and miles Jim was able to put into this project.

Now it's time to let Jim's article tell the rest of the story.

## MILWAUKEE SENTINEL SPORTS SHOW

"Extreme Sports" like; a rock climbers on the wall, a solo helicopter, Karate demos, Paintball rifle fire, and Jet-skis were part of the action nearby the Horseshoe court at the recent Milwaukee Sport Show. Surprisingly the horseshoe game was a major attraction among the many many exhibits. Everybody can recognize a ringer. A double, naturally, was like a slam-dunk.

Terry Sternberg, a WHPA - VP, got the idea and saw it through making all the arrangements and recruiting near fifty WHPA members to man the court exhibit throughout the show.

The Hassinger Indoor League, Bob Traber, Tony Scrima, etc. provided the portable courts loaded with that great Chenoa clay.

Crowd question most often asked: "What is that stuff? Mud or Cement? Gordy Kottke, at the Oakfield clay quarry should be getting a call or two. (for your info it's 414-583-3030.)

Tom Steinke got the idea that Muskego pitcher, Galen Kozel of Waukesha Century Fence might like to provide the backstop barriers. The final eight feet of court, each end, was fenced to a height of six feet. Side court was protected with a tandem rope barrier. Eight rubber mats afforded platforms for pitchers of both 30 and 40 foot distances. Overall it was a neat set-up.

Cliff and Elaine Troullier of Manitowoc brought a sample shoe display and were forced to say, "Yes these are all legal shoes." more times than they like to remember. That pretzel shoe by "Durham" drew many comments.

World tournament and instructional videos played constantly, courtesy of Dick Schoener. Trouble is, there was often a live shoe in the air about to be a ringer and it stole the attention of the moment.

Members-only tossed shoes - all kinds of members - and all were appreciated. Sunday, when the crowd stream was heaviest, six top pitchers played a 20-shoe round robin - on that one court. Lorraine Sternberg, Ladies State Champion, and Heidi Sternberg, Girl's World Champion, were well received but Don Kangas took the honors of the day. Jim Larson, in for the weekend from Sun Prairie, played along with Pewaukee's best Flip, John Koepp III. Gus Schram, the Ringle Single man, filled out the six-man class.

Among the many part-time observers, there was one guy who was heard to issue a twenty buck challenge to any pitcher in earshot. At the time Schram and Kangas were piling on a bunch of ringers. But when their game was over the man with the twenty had made his escape.

The final weekend was an anyman's tournament with strange consequences. To facilitate the schedule and hasten the finals,



three pitchers were abruptly cut after losing two games. The tournament director took full blame but running a 9-man round robin on one court ain't easy, someone had to go. Besides Jane Meier was running away with it - 6 wins, no losses, 57.5%

Have you seen a navy blue truck decorated with a horseshoes and stake emblem? A visiting up-state pitcher of fair renown lost it inside the parking structure of the Grand Avenue Mall. Was offered a free ride from security to search the premises. Gotta watch those floor signs.

*CONTINUED .. TURN TO NEXT PAGE- SPORT SHOW...*



### WISCONSIN HORSESHOE PITCHING SUBDISTRIBUTORS

*GAME RELATED ITEMS*

**Elaine & Cliff Troullier**

3126 Wagon Wheel Road, Manitowoc, WI 54220

(414) 682-3197

*(The PAUL NEUMANN display)*

**SPORT SHOW** CONTINUED FROM PREVIOUS PAGE

This Sport Show venture developed suddenly. There was not time to discuss sponsorship in a regular membership convention. Three of the four WHPA officers were present to support it.

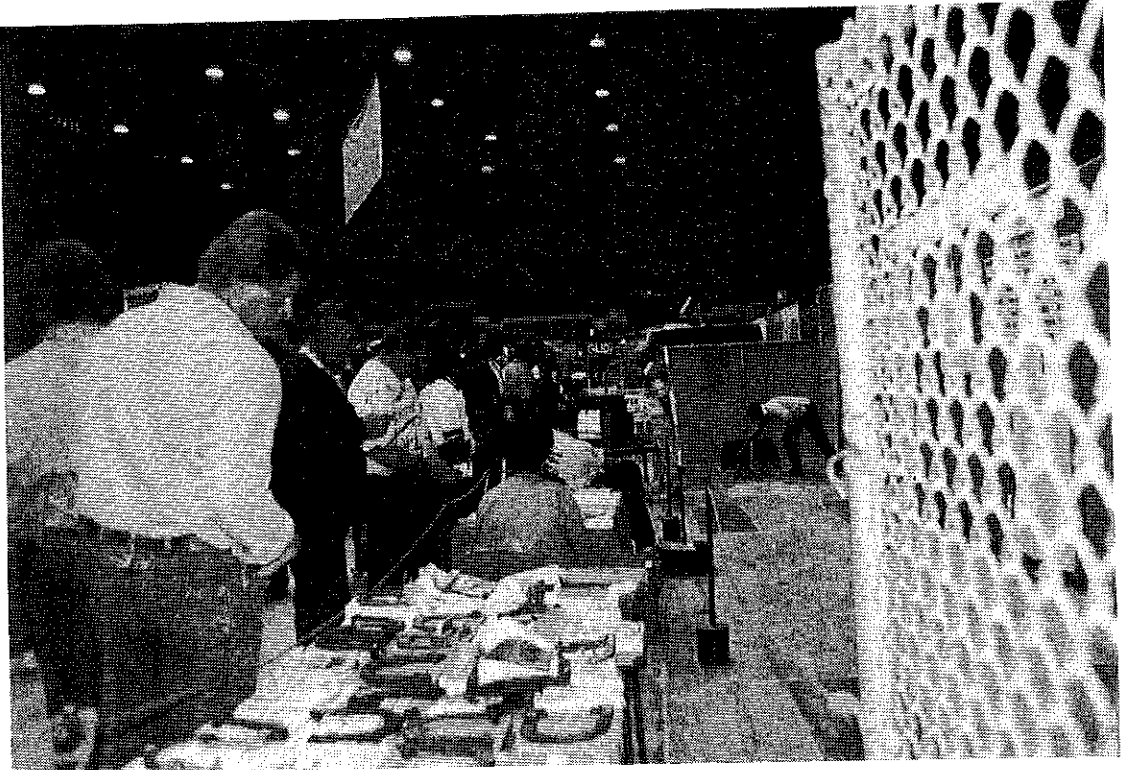
Did all the Sport Show volunteers get a "Thank you"? Terry Sternberg is that way. He is prone to do most of the work and always says, "Thanks for coming."

Together with those already mentioned, the volunteers manning the exhibit for over 80 hours, some with multiple shifts, were:

from the Goldendale Club; Renee and Heather Sternberg, Harold and Dolly Kloehn, Bob

Mattson, Ken Davison, Jim Haupt, and Susie Pritzlaff - from the Muskego Club; Pam and Penny Steinke, Wayne Franzen, Weldon Gaulin, Wayne Vanderhei - a long haul trucker, Ron Zepplin, on a Milwaukee run from the Marshfield Club, - Gus Schram's business manager/chauffer

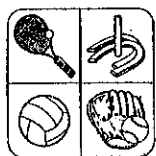
down both weekends from Windy Hill, Ken Kosky - representing Washington Park, Mr. and Mrs. Al McGowan - from Pewaukee, Larry McCutcheon - from Arena/Barneveld, Ron Berg - from the Beloit Club; Earl Paulson, Mouse Beckius, Harold Laws, and Ken Lovas - from Mosinee, the State Champ, Randy Rein, Marge, the boys, Shannon and Wesley - from the Fond du Lac Club; Jeff and Ann Secord, Dick Schoener, John and Sandy Secord with nephew,



David Secord - on hand for the Wolf River Ringers; Ken and Kathy Jaeger - from Sheboygan; Don Peterson with Gil and Lori Matzdorf - representing both the WHPA and the NHPA, Dick and Paulette Hansen - two others always center stage were Carl Steinfeldt and Dave Loucks on the video machine.

The Milwaukee Sport Show is one of the largest in the Mid-West, 116,678 people had a chance to see horseshoes close up. Some of the spectators may never touch a shoe but the beauty of it is that some of those thousands of visitors have a new regard for the game and through this acquaintanceship they may try it someday. Sunday night, when the three trucks were loaded with a gear, it seemed a good time to shake hands all around to say, well done.

**WORLD TOURNAMENT** entry forms are available. The March/April issue of Newsline carried it and other World information including; lodgings, RV reservations, and pitching format. All pitchers remotely interested pitchers should subscribe but may obtain entry forms from subscribers or regional directors. The former platform courts have been discarded in favor of Eau Claire type portables with 18" rubber runners the entire 46 feet. Courts and runners are now being field tested at Eldon Sarabough's indoor courts. Runners will be displayed at the April 1st Regional in Nashville. (Low entry at Nashville this year -only 58.)



**Royal  
Wood**  
SPORTS CENTER

WISCONSIN  
HORSESHOE

HALL  
OF  
FAME

1501 CEDAR DR., PLOVER, WI  
715-341-8950 - GROUP PARTIES

INDOOR HORSESHOE CLAY COURTS



**BURT TROPHIES, INC.**

10885 Trophy Lane & E. 29th St.  
Marshfield, Wisconsin 54449

Telephone 715 384-5839

Call or write us for all  
your award needs. Write  
for free color catalog.



**SANDBAR SANCTIONED DOUBLES**

The February doubles tournament at Arena is limited to teams with a combined ringer percent not to exceed 110%. With the bring your own partner format, the cap is set to encourage top pitchers to match-up with others not normally in that top class. It is not unusual to disallow entry for one team. This year four teams entered over-limit.

Rather than cause mass confusion, they were placed in one class designated "O", for outlaws. Succeeding classes began the usual progression, A,B,C,and D. The actual tournament champions came from Class A.

Because the tournament deadline occurred after the year end averages were published, it is conceivable that some pitchers were not aware of their book percentage. Next year the Sanctioned Doubles tournament will be in January. Entering averages will be based the numbers used to seed the State Tournament. We are, of late, updating the WHPA/NHPA percentage monthly and most pitchers can't keep up with changes to their own average.

A full-house doubles day at the Sandbar would be 32 teams. This 1995 event was short four teams but it allowed for creative scheduling and six-team classes. All classes played 30 shoes per man, per game.

Ralph Maylahn, although nursing recent wrist surgery, did the major part of the stats work, thankfully, allowing the tournament director to also play. Maylahn, presently, is again cruising the Auto-bahn on his annual tour of Europe. He claims his surgeon promised a fully mobile wrist in time for the outdoor season and a probable 10% percentage increase. We'll see.

Illinois was here in the four teams Rich Wisnewski of Arlington Hts entered, representing the Whiting, IN Club. Wisnewski, himself, is looking hale and hearty since he now owns a (can you believe it?) transplanted Heart!

In the results that follow, take note of the tournament champion team. Ken Kosky, Schofield, pitched a personal high percentage and his partner Gus Schram of Ringle was high percentage pitcher of the day. Kosky remarked that in one game he found all but two of Schram's shoes on the stake - 28 of 30!

Class C wound up in a pure tie for first place - same wins, same losses, same team percentage. Although Bing Noltmeyer and Bob Anderson split the award with Paul Federer and Chet Hermansen, the latter team should retain bragging rights for winning the last head to head game.

**THE ARENA DOUBLES TOUR**

This winter has witnessed many doubles tournaments at the Arena Sandbar, perhaps more than ever before. Tip Wipperfurth and Carl Gilbertson have seen to the task and offered an outing most every weekend. Except that in March, Sandbar operator, Dave Forseth, called a two week hiatus while he was on an African safari.

Most days the same teams show up. This season the most traveled teams are Duffy and Ron Brockway of the La Crosse area or Ken Kosky and Gus Schram from near Wausau.

Kosky must like the courts. He's pitching at and over the top of his game. Schram has a tip for area Realtors - Kosky may be interested in acquiring some property in the region.

CLASS A			CLASS B		
Ken Kosky	4/1	44.7	Harold Brookway	4/1	38.0
Gus Schram		67.8	Ron Brookway		44.7
Arnie Walton	4/1	59.3	Hallie Romanelli IL	4/1	54.0
John Barden		47.3	Dalton Simmons IL		26.7
Jim Larson	4/1	56.6	John Secord	4/1	32.0
Darwin Frye		44.7	Jim Haupt		43.3
Gerald Weikert	2/3	38.8	Rich Wisnewski IL	2/3	38.0
Ron Yttri		40.8	Tom Reid IL		36.0
Bill Schaaf	1/4	47.7	Norm Mauthe	1/4	31.3
Dave Schorbahn		40.1	Len Mauthe		25.3
Bob Pluckebaum IL	0/5	30.7	Fred Decorah	0/5	24.0
Rich Andrysiak IL		49.3	Mike Menden		37.3
CLASS C			CLASS D		
Paul Federer	4/1	34.0	Rick Romanelli IL	4/1	32.7
Chet Hermansen		40.7	Terry Ilavec IL		26.7
Lavern Noltmeyer	4/1	30.7	Ron Berg	3/2	26.7
Robt C Anderson		44.0	John Aeschilmann		34.0
Tony Scrima	3/2	36.0	John Gregorich	3/2	23.3
Norm Beckius		24.0	Ron Lingrad		36.7
Earl Paulson	2/3	40.0	Bill Dahmen	2/3	28.0
Russ Burns		34.4	Carl Gilbertson		30.7
Alan Hehling	2/3	25.3	Bernard Cockroft	2/3	33.3
Greg Hehling		38.0	Bob Traber		18.0
Rich Conrad	0/5	26.7	Terry Sternberg	1/4	25.3
Larry McCutcheon		26.7	Diok Schoener		14.7
CLASS O					
1. Lavern Edge	5/1	43.3	2. Ken Jaeger	4/2	39.4
John Udelhofen		62.2	Brian Repinski		60.5
3. Ken Olson	3/3	45.0	4. Dave Klipstein	0/6	33.9
Mark Mauthe		53.8	Bun Carley		42.2

**TEAM-WORLD**

May, the month of Spring flowers will also bring the 1995 TEAM-WORLD to Beloit May 5-6 & 7.

With the entry deadline only days away, tournament promoters expect their largest tournament ever. If a few traditional entrants make the call, a full house field of 24 teams from nine states and four Canadian provinces is probable.

Tom Roanhouse, Tournament Director, hopes entries level out at just 24 teams. He recalled in prior years no entry has been turned away but the limit is determined by the 24 courts available.

New teams this year are; Colorado, Michigan, and Quebec, plus a third and fourth team from Missouri. Wisconsin may enter four teams. Other Mid-West states of Iowa, Illinois, and Indiana will compete against top-rated Kentucky and the Minnesota champions - three times running. Ontario has again entered two teams but Saskatchewan, usually here, remains a hopeful late entrant.

Pitchers, the really pro variety, have come to know this tournament as the best collection of horseshoe competitors next to the World Tournament itself.

If any horseshoe tournament can create interest this year's event should. Sue Snyder, Ladies World Champion, is now with Kentucky as is former World Champ, Don Titcomb. It's anticipated the Quebec team is Angeline Moisan, Diane Cantin, Sylvianne Moisan, and Andre Leclerc. Ten time Ladies World Champion Viki Winston should head up the Missourians. Dale Lipovsky, Phyllis Negaard, and Mark Seibold also own multiple World Titles. Sandy McLachlin Jassens, Ontario, won the World at age 17 in 1987. Will she return to TEAM-WORLD? Answer is available on site, Telfer Park, Beloit, WI, May 5-6 & 7.

**JR SCHOLARSHIP BENEFIT TOURNEY**

by Lorraine Sternberg

Arena was the setting for the Jr Scholarship Fund Tournament. It proved to be a big success raising \$170 for future scholarships. Thanks to all who participated and to those who helped score-keep, especially Heather and Heidi. Bob Traber marked up first place the same day his son did on the pro-bowling circuit. Heidi and Heather Sternberg made their first appearance in the adult division - look out ladies. Don Kangas complained that we tied and I didn't win. Sometimes it pays to be the tournament director. Rules were; "No Play-offs." Guess he'll have to direct his own tournament. The only game Heidi won was against Mark Mauthe. Her comment was, "I finally beat you" - after never beating him in the Jrs. Class C, with one bye round per pitcher, had to help score-keep within their own class. We were a little short. Thank you Dave Forseth, for the use of your courts. If you pitchers have never been to the Arena Sandbar, try it sometime, the courts are great and the burgers are even better.

Lorraine Sternberg was more than visiting tournament director. She was tournament committee chairlady. She came to Arena with her committee - for the weekend. Lorraine forgot to mention that Terry also made the trip and not just to drive. They could have called this one "THE JR STERNBERG TOURNAMENT."

**DOWN AND BACK**

By Jim Haupt

Southeastern Wisconsin is grumbling en masse over the introduction of reformulated gas. Some complaints are real, others imagined. They fall into three categories. Some small engines have been damaged; fumes are said to be nauseous and while the MPG is down the price is up ten cents per gallon. It became the topic of discussion on a recent return trip from the Arena Sandbar. It was Tony Scrima's turn to cash-in at the Kwick-Trip station in Cross Plains - #1.03/gal. and across the street from a Culver ice cream parlor, a double bonanza! Scrima was pumping his double tanks full grousing about the terrible smell of the gasoline these days. His rider, washing the back window, finally got a good whiff and agreed, "Gee, it really does smell bad." Scrima took another look at the pump price when in came to him - Hey, if you think this is bad, wait until we get to Waukesha...., we're using the good stuff here." Phychogenic? I guess so! But how many would complain if the stuff were actually ten cents cheaper?

\* \* \* \*

Don Kangas, Colgate, has been on the prowl for an indoor pitching place. He heard of a sparkling new Volleyball complex near the Waukesha Expo and invited expert portable court builder, Tony Scrima and his sidekick for a look-see. It's a nice house, maybe too nice, with eight volleyball courts. The proposal is to set-up 6 horseshoe courts on one volleyball court. It remains a possibility except for court storage. Kangas will continue the storage search - maybe under the bleachers. If successful, he'll be looking for 24 pitchers willing to underwrite the 95/96 indoor season.

**RESULTS.....**

.....#28-95-003

<b>CLASS A</b>			<b>CLASS B</b>		
Lorraine Sternberg	6/1	71.8	Arnie Walton	6/1	57.0
Don Kangas	6/1	69.3	Ron Brockway	5/2	53.5
Ralph Maylahn	5/2	65.0	John Barden	4/3	48.9
Mark Mauthe	4/3	60.7	Jerry Nordlee	4/3	47.1
Gus Schram	3/4	62.1	Ken Jaeger	3/4	41.0
Jim Larson	2/5	46.8	Jane Meier	3/4	40.0
Heidi Sternberg	1/6	50.4	Bun Carley	2/5	44.6
Pam Steinke	1/6	46.8	Heather Sternberg	2/5	42.9
<b>CLASS C</b>			<b>CLASS D</b>		
Tony Scrima	5/1	47.5	Julian Tijerina	5/2	44.6
Jim Haupt	4/2	46.7	Len Mauthe	5/2	37.9
Dave Klipstein	3/3	43.3	Earl Paulson	5/2	35.9
Ken Kosky	3/3	35.0	Bern Cockroft	4/3	44.3
Terry Sternberg	2/4	38.8	Harold Brockway	4/3	36.4
Tip Wipperfurth	2/4	36.3	Ron Lingard	3/4	36.1
Bob Anderson	2/4	34.2	J Aeschlimann	2/5	29.9
<b>CLASS F</b>			<b>CLASS E</b>		
Gil Matzdorf	4/1	29.6	Harold Laws	0/7	23.6
Carla McFarlane	3/2	34.0	<b>CLASS E</b>		
Bill Matey	3/2	29.6	John Mease	6/1	38.6
Bill Spahn	2/3	34.8	Russ Burns	5/2	35.0
John Gregorich	2/3	29.2	Carl Gilbertson	4/3	34.2
Rose Larson	1/4	23.6	Rich Conrad	4/3	30.0
<b>CLASS G</b>			Norm Beckius	3/4	29.1
Bob Traber	5.0	29.6	Larry McCutcheon	3/4	24.3
Dick Plaisance	3/2	19.2	Leo Zamzow	2/5	23.2
Wayne Franzen	2/3	21.6	Ron Berg	1/6	26.8
Tom Steinke	2/3	21.2	<b>JR CLASS A</b>		
Dick Schoener	2/3	18.0	Penny Steinke	4/0	34.8
			Paul Fricano	2/2	21.0

**WHNL CALENDAR**

APR 29 CLUB TEAM at Beloit #28-95-006	D/L 4-15
Jim Haupt 414-964-2735 Telfer Park	
APR 30 ENCORE at Beloit #28-95-007	D/L 4-18
Earl Paulson 608-879-2304 Telfer Park	
MAY 5-6-7 TEAM-WORLD at Beloit; Telfer Park	D/L 3-31
Tom Roanhouse 414-534-5838 #28-95-008	
MAY 13 EAU CLAIRE EARLYBIRD	D/L 4-29
Dennis Keiser 715-235-6535 #28-95-009	
MAY 13 MUSKEGO DOUBLES	D/L 5-6
Tom Steinke 414-542-0252 unsanctioned	
MAY 20-21 BELOIT SPRING SINGLES	D/L 5-10
Earl Paulson 608-879-2304 #28-95-010	
MAY 27-28 PLATTEVILLE SPRING SINGLES	D/L 5-12
Norm Mauthe 608-348-9697 #28-95-011	
JUN 3 WOLF RIVER OPEN New London	D/L 5-20
Ken Jaeger 414-982-6287 #28-95-012	

\*All sanctioned tournaments indicated by number.

For more complete tournament information see the 1995 Official WHPA schedule or tournament flyer. From time to time the Wisconsin Newsletter Calendar may list other tournaments such as; unsanctioned events, out of state tournaments, events and dates not related to tournaments.



**DOWN AND BACK...SOMEMORE**

Who's the former "A" pitcher not pitching many shoes these days but tearing it upon the bowling lanes? It's not Casey Jones or Walter Ray Williams Jr. Doug Stittleburg of Waunakee, in a recent series missed only three strikes for an 857 including a 299 game.

The former tip came from Tip Wipperfurth who, it was duly reported, also had a memorable bowling experience. While competing in a Reno, NV tournament, Wipperfurth led off with eight consecutive strikes - got so excited he missed the first two letters, 'WO,' on the restroom door. Further details were unavailable.

\* \* \* \*

The Trabers of Cedarburg, Jeanette and Bob, have had some anxious Fridays this year. Of their four sons, two are excellent bowlers. They are the Traber brothers who made ABC history last year taking the top two places in the prestigious Firestone Open. Any Friday the Trabers of Cedarburg could receive an invitation to the pro-bowlers TV finals.

Friday of this year, s Firestone they received a call of a near miss. Dale, a part-time pro who lives at home, finished in sixth place just ten pins out of the final five for the TV ladder. The near miss was worth about \$5000.

One week later, Dave, the dedicated pro, wound up number two on the ladder but the tournament was in Maryland - too far to travel on short notice.

Bob pitched the Jr Scholarship tournament at Arena wondering how things were going on the alleys. The usual Saturday TV bowling show was pre-empted in this area. Meanwhile Bob cranked his shoes to a first in class.

Finally at 12:05 AM, Sunday morning the Trabers watched as Dave won both games - the last from Walter Ray Williams Jr, the tournament leader, to win first place in the Maryland tournament. The cash award was not that much - only \$18,000. Sure beats the \$30 Bob won.

Since that time Dave had another TV appearance losing first in the final frames on a freaky hit.

\* \* \* \*

Sport Show spectator on a "four dead": "I wouldn't want to pitch those two old duffers." ...Wonder if Gus would prefer a younger looking partner?

\* \* \* \*

### 1994 STATE TOURNAMENT CLUB TEAM RESULTS

The 11 pitchers from the Goldendale club featured three state Champions to clinch the State Club Tournament Championship. They had a team winning percentage of 6.72 points. A close 2nd was the 21 pitchers from defending champions Close Doesn't Count club with 5.47 winning percentage and three State champions.

### WISCONSIN ADDS NEWLY FORMED SANCTIONED CLUB

by Jim Haupt

Four years ago two area pitchers appeared before the Kenosha Parks Commission with a plan for courts. The city liked their idea and budgeted funding for 1991. It went straight out the window with a mayoral change but with the help of a City Alderman the pitchers persisted asking only for the land rights. Glenn Bogenschneider and Ray Billen secured the Park Department's permission to build but they were only two guys with a promise. The Alderman had a neighbor who pitched - Harry Nelson, now club president. Somewhere two others, Arnie Esser and Jim Marescalco, became interested. Now they needed a club - pitchers to build courts and form a league.

The five formed a steering committee. Three of the five were already NHPA members. Going first class they all decided on a sanctioned club with 100% NHPA membership. They mailed invitations to 150 area horseshoe pitchers (tavern leaguers) and rented a hall. Of the 29 showing up, 21 became members on the spot. On a roll, they elected officers and formally founded the club at that very first meeting March 6, 1994. Seven more members were later added.

As they continue to deal with the City of Kenosha, they have found it quite helpful to have the City Alderman, Chuck Bradley, sit on the club committee and add credence during formal negotiations. Club members built 5 courts in Nash Park with donated material. Clay was used on four. One court is sand because the park is public and may attract some casual pitchers.

A sanctioned tournament, their first, was conducted in early October. In celebration of a successful inaugural year, families were invited to a club picnic.

Growth plans for 1995 is a goal of 50 pitching members and four more courts. Eventually the plan is for a total of 23 courts. Additional commitment from the City is expected for land and construction of future amenities.

Another northern club, Eau Claire took 3rd place honors with 5.27 % , 4 State champions and 20 pitchers. Marshfield has been strong competition in the past cornerd 4th place, 5%, 8 pitchers and 2 State champs. Beloit Club also had 8 pitchers but had a winning percent of 4.75. Many THANKS to those clubs competing. Hopefully, next year we will have twice as many clubs vieing for the coveted travelling trophy.

WISCONSIN HORSESHOE NEWSLETTER  
W204 N11912 GOLDENDALE ROAD  
GERMANTOWN, WI 53022

BULK RATE  
U.S. POSTAGE  
**PAID**  
PERMIT NO. 25  
GERMANTOWN, WI  
53022

99/99  
Jim Haupt  
5075 N Elkhart Av  
Milwaukee, WI 53217

CHECK OUT THE NEW EXPANDED  
FACILITIES!

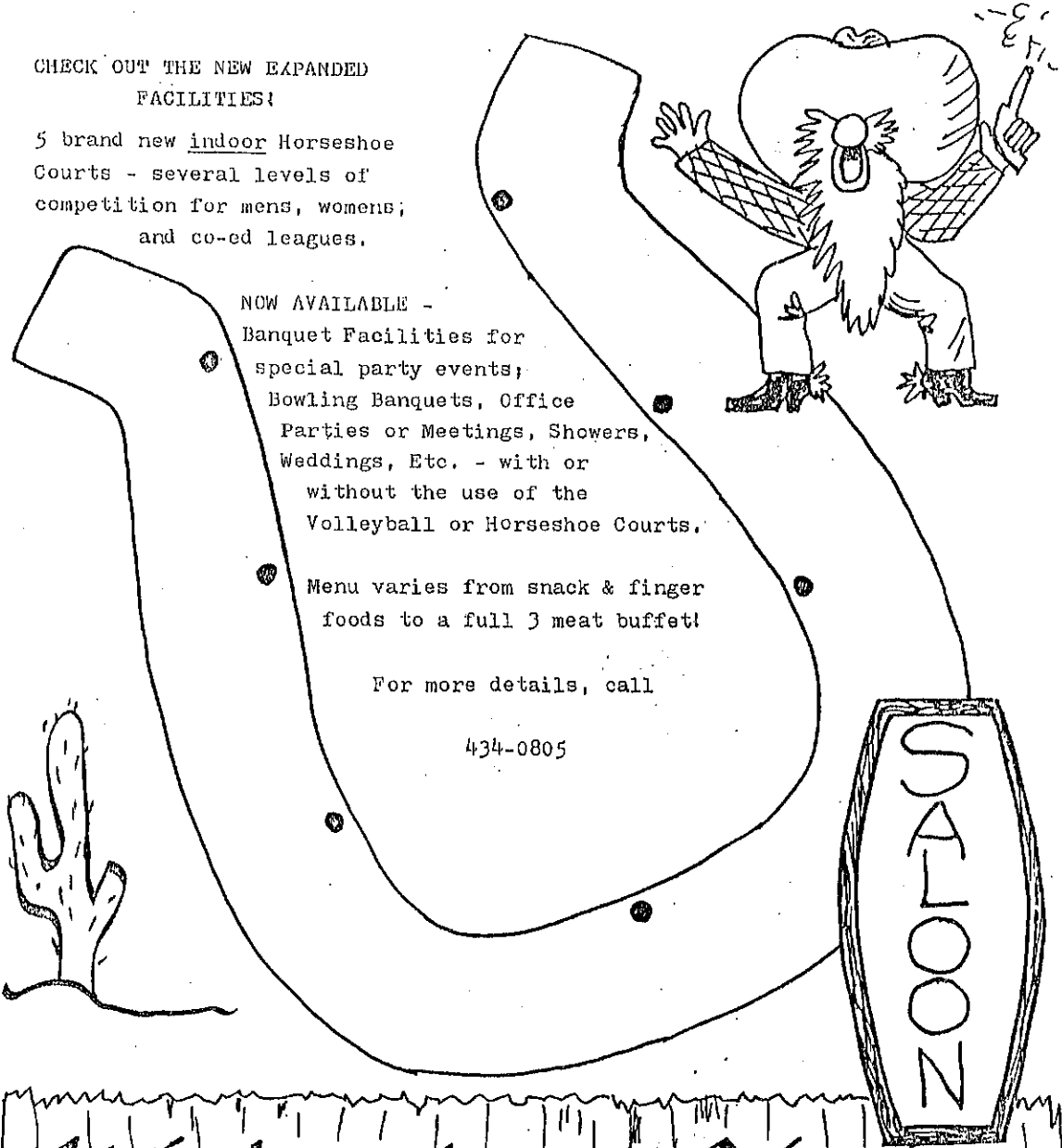
5 brand new indoor Horseshoe  
Courts - several levels of  
competition for mens, womens;  
and co-ed leagues.

NOW AVAILABLE -  
Banquet Facilities for  
special party events;  
Bowling Banquets, Office  
Parties or Meetings, Showers,  
Weddings, Etc. - with or  
without the use of the  
Volleyball or Horseshoe Courts.

Menu varies from snack & finger  
foods to a full 3 meat buffet!

For more details, call

434-0805



Watering Hole  
2107 Welp Ave. Green Bay, WI